

The Folklore Society

of Greater Washington ❖ NEWSLETTER

Vol. 37 No. 11

❖ www.fsgw.org ❖

August 2001

FSGW Special Event

Cinema Arts Theatre, Fair City Mall, Fairfax, VA



Down from the Mountain

A Special Greater Washington Area
Premiere of a New Documentary Film
Benefit for FSGW and IMT

Thursday, August 2, 2001

Pre-screening concert at 7:30 pm with the Kossoy Sisters

Film screening at 8:00 pm

When the Coen brothers made the movie *O Brother, Where Art Thou?* — a paean to the wonders of old-time Southern music — they created a companion CD containing most of the music featured in the film. They also gathered many of the artists who performed the music, and staged a series of concerts, including one in Nashville, which turned out to be one of the late John Hartford's final performances. This film documents that music, that concert, and the goings-on, both onstage and backstage.

FSGW is a beneficiary of this premiere opening at the Cinema Arts Theatre in Fairfax, VA. (Receipts will go to the FSGW and the Institute of Musical Traditions). We're going to supplement the film with some live music that OUGHT to have been part of it: when the Coens put together their movie, they used the **Kossoy Sisters'** version of *I'll Fly Away*, but because the Coens didn't realize that the **Kossoy Sisters** were still around and performing when they put together the concerts and the CD, they were overlooked. To remedy that omission, FSGW is extremely proud to present the **Kossoy Sisters** performing LIVE before this film. (Better than any "coming attractions" you'll ever see!)

The Cinema Arts Theatre opens the film to the general public the next day. The theatre offers comfortable seating, and food that goes way beyond popcorn and jujubes. Enjoy one of their deli sandwiches for dinner, or one of their mouth-watering desserts.

Come see a great film at its area premiere, and support the FSGW at the same time. **Admission is \$15 for all** to benefit the sponsors. **Info: 703.978.6991.**

Down From The Mountain (NR) With: **The Cox Family, the Fairfield Four, John Hartford, Emmylou**

Continued on page 5

Inside:

FSGW:

Advance Warnings	11
Board Members/Meeting	19
Chesapeake Dance Weekend	3
Community Dance	4
Editorial Policy	19
English Country Dances	4
Getaway	7 & 8
Help Wanted	4
International Dance	2
KOSSOY SISTERS HOUSE CONCERT	5
Sings	6
TESS LABLANC HOUSE CONCERT	3
Storytellers	6
Sunday Night Dances	2

Features:

Calendar	10-11
Classifieds	19
Concerts & Concert Series	6
Dances	16
Dance Classes	15
Directions to Venues	12
Jams/Open Mics/Audience Participation	13
Local Folkal	9
Workshops, Weekends, Festivals	14

FSGW Sunday Night Contra Dance

Sundays • 7:30 to 10:30pm

Spanish Ballroom at Glen Echo Park (Directions, page 12). Live music by excellent bands, entertaining callers. Experienced and new dancers are welcome, and no partner is needed. Called dances are mostly contras, with occasional squares. New dancers should come early, as dances become more challenging later in the evening. **Admission \$8; \$6 for FSGW members and BFMS, CDSS, and ATDS members.** The Ballroom is not air-conditioned. Dancers should dress appropriately and bring water. **Info: Anne Sargeant at dance@fsgw.org or check the webpage www.fsgw.org.**



August

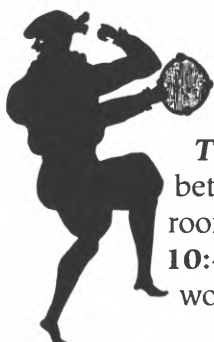
- 5 **Bill Wellington** calls, music by **Laura Lengnick** on fiddle and **Charlie Pilzer** on piano
- 12 **Tom Hinds** calls to music by the **New Velcro Monkeys** (**Laura Light** on fiddle and vocals; **Dan Sebring** on guitar, mandolin, and fiddle; and **Christen Hubbard** on mandolin) playing tunes from their new recording, *No Gravity*
- 19 **Liz Donaldson** calls to music by the **Gigmeisters** (**Alexander Mitchell** on fiddle; **Dave Wiesler** on piano and guitar; **Paul Oorts** on mandolin, banjo, and accordion; and **Ralph Gordon** on bass)
- 26 **Gaye Fifer** calls to music by **David Knight** on fiddle, **Wes** and **Terry Maluk** on strings and percussion, and **Peter Martin** on flute and hammer dulcimer.

Advance Notice:

September 2 dance will be held in the *Bumper Car Pavilion*. Caller TBA, music by **Raisin Cane** (**Rachel Hall**, **Helene Zistook**, **Bill Quern** and **Joanne Rocke**)

September 16 dance will feature **Robert Cromartie** calling to music by the *Hillbillies From Mars*.

September 23 dance will feature *Wild Asparagus* with **Ann Percival** on piano, guitar, and vocals; **David Cantieni** on winds; **Keith Murphy** on guitar, mandolin, piano, and foot percussion; **Becky Tracy** on fiddle; and **George Marshall** on concertina, bodhran, and calling.



Foggy Bottom Folkdancers

Thursdays • 7:30 to 10:45 pm

The Foggy Bottom Folkdancers meet in the parish hall of St. Mary's Church, 23rd St. NW between G and H, one block from Foggy Bottom Metro. Parking available. Air-conditioned room with good dance floor. Beginner/intermediate classes 7:30-9 pm. Request dancing 9 to 10:45 pm. No experience or partner needed. *Mostly taped music.* Occasional parties and workshops. Co-sponsored by FSGW. **Admission: \$4.** Info: **Jamie at 301.320.7099.**

Tess LeBlanc

Fresh Steps in Music

Thursday, August 23 • 8 pm

French, English, and Gaelic traditions come together in eastern Canada and are synthesized into something new. **Tess LeBlanc**, a native of that area, is a master of all three music styles. She offers an "animation," as they call it in French Canada: part concert, part workshop, a chance to explore these traditions with a great teacher at the heart of it all. The concert will be held at the home of Bob Clayton and Jennifer Woods in downtown Silver Spring, not far from the Silver Spring Metro Stop, at 8 pm.



Born in Moncton, New Brunswick into a family where music was a way of life, Tess began singing alongside her musically-talented father and sisters. The LeBlanc home regularly resounded with bagpipe and fiddle tunes, classical music and folk songs. As her interest in music grew, Tess went on to join several Moncton choirs. In 1980, Tess's interest in stepdancing and Gaelic singing led her to attend Saint Francis Xavier University in Antigonish, Nova Scotia, where she studied Gaelic. This was followed by a program of studies in ethnology at Laval University in Québec City, the place she now calls home.

Tess's remarkable voice, stage presence and personal charm have captivated audiences at festivals and concerts across Canada and the northeastern United States. She brings a fresh and interesting dynamic to her blended repertoire of traditional Acadian, Celtic and Québécois songs. The rhythmic influence of her years as a stepdancer is clearly felt in her vocal performances. We are lucky to catch her between her week teaching at the Augusta Heritage Workshops in Elkins, WV, and her week of teaching at the Pinewoods Music Camp in Plymouth, MA.

Info: Jennifer Woods/Bob Clayton 301-587-7174 or Knitpick@aol.com. (FYI: There are four cats and one dog in residence.)

Twentieth Annual FSGW Chesapeake Dance Weekend



Friday, April 12 to Sunday, April 14, 2002

Mark your calendars now for the twentieth (!) annual **FSGW Chesapeake Dance Weekend**, at beautiful Camp Letts in Edgewater, Maryland. Northern music will be provided by **Double Date**, featuring **Becky Tracy** and **Keith Murphy** (of *Nightingale*) joining **Ann Percival** and **David Cantieni** (of *Wild Asparagus*). And geographical balance will be provided by Southern tunes played by the **Critton Hollow String Band**, with caller **Kathy Anderson**. Additional details will follow in coming newsletters.

FSGW English Country Dances

Wednesdays • 8 to 10:30 pm

Dance on a wood floor in the climate-controlled community room at the Glen Echo Town Hall (Directions, page 12). Enjoy the talented callers, accompanied by topnotch musicians playing melodies that are unique to each dance, featuring a delightful mix of instruments which on a given evening might include piano, fiddle, flute, harp, oboe, concertina, bassoon, or viola. Enjoy the welcoming crowd, light refreshments, and dancing from 8 to 10:30 pm. Experienced and new dancers are welcome, and no partner is needed. **Admission \$8; \$6 for FSGW members.** Free beginners' workshop every 2nd Wednesday at 7:30 pm. **Info: Norm Bernhardt, 301.320.2469; Rich Galloway, 301.589.0939; Roger Broseus, english@fsgw.org.**



August

- 1 Caller **Sam Rotenberg** from Philadelphia is accompanied by **Liz Donaldson** (piano), **Keith Gillis** (guitar) and **Becky Ross** (fiddle).
- 8 Musicians **Francine Krasowska** (piano), **Karin Loya** (cello), and **Jeff Steinberg** (fiddle) accompany musician... whoops!... we mean caller **Liz Donaldson**.
FREE LESSON: Basics of English Country Dance, 7:30 sharp, led by **Liz Donaldson**.
- 15 **Diane Schmit** calls to the music of **Liz Donaldson** (piano), **Barbara Heitz** (flute), and **Matty Metcalfe** (accordion).
- 22 Caller **Stephanie Smith** is accompanied by **David Knight** (fiddle), **Donn Williams** (guitar), and **Julie Gorka** (piano).
- 29 **Rich Galloway** calls to the music of **Bruce Edwards** (concertina and bassoon), **Francine Krasowska** (piano), and **Colleen Reed** (flute).

H E L P W A N T E D

INSURANCE BROKER: FSGW Board of Directors would like to coordinate its current and future insurance requirements through an FSGW-member insurance broker. Please contact **Carl Mintz** at 202.543.4999.

LIBRARIANS/ARCHIVISTS. FSGW Board of Directors hopes to address the issue of proper storage, maintenance, and retrieval of FSGW archival documents and audio recordings, for the benefit of the FSGW Membership. If you have experience in this field, or if you are currently in possession of archival documents and/or recordings which you believe should be added to the FSGW permanent archives, please contact **Nancy-Jean Seigel** at secretary@fsgw.org, **Kathy Westra** at program@fsgw.org, or **April Grastorf** at newsletter@fsgw.org.

FSGW Community Dance

Returning in September • 3:30-5pm

The monthly Community Dance is on summer hiatus, but will return in September. Dances are usually scheduled on the fourth Sunday of each month, and are a delight for children, parents, and grandparents alike. Glen Echo Town Hall (see Directions, page 12). \$5 for adults, \$4 for children (age 4+), or \$15 per family. Co-sponsored by FSGW and the Institute of Music Traditions. **Info: Tali Stopak and Bob Mathis, talibob@starpower.com or 301.589.7539.**



Down from the Mountain Benefit showing *continued from front page*

Harris, Chris Thomas King, Alison Krauss and Union Station, Colin Linden, the Nashville Bluegrass Band, the Peasall Sisters, Ralph Stanley, Gillian Welch and David Rawlings, and The Whites.

More about the film at the theatre's website: <http://www.cinemaartstheatre.com/film.cfm?ShowID=334>

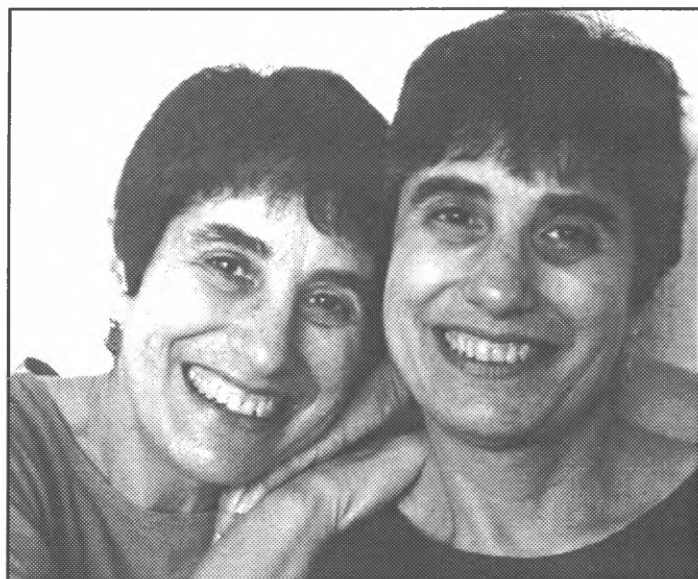
DRIVING DIRECTIONS TO THE CINEMA ARTS THEATRE:

From 495 (DC Beltway), take the Little River Turnpike/Route 236 Exit West (Exit 52). (Little River Turnpike becomes Main Street at the Fairfax City line.) Approximately 3 miles from the Beltway you will pass through the intersection of 236/Main Street and Pickett Road. Once through the intersection, move into the right hand lane, and look for the entrance to Fair City Mall on your right. Make the right into the Mall and proceed toward Marshall's. The theatre is located inside the Mall.

From Route 66, take the Nutley Street exit (Exit 62), proceed south on Nutley across US 29 to Route 50 (Arlington Blvd.). Turn right onto Rte 50, and continue .7 mile until you reach VA 237/Pickett Rd. (2nd light). Turn left onto Pickett, and continue 1.5 miles until you see the sign for the Fair City Mall on your right. Turn into the mall and you will see the theatre marquee on the building facing you.

FSGW House Concert

Laurel, MD



The Kossoy Sisters:

Irene Saletan and Ellen Christenson

Saturday, August 4 • 8 pm

The Kossoy Sisters, Irene Saletan and Ellen Christenson, are one voice singing harmony with itself. Identical twins, they began harmonizing at the age of 8 or 9, singing mostly what they heard around the house: songs of the 20's and music hall songs. After hearing Pete Seeger and the Weavers,

they gravitated to American traditional songs. Most of their teenage years were spent singing in Washington Square, in Greenwich Village, and by the age of 20, they had performed widely in New York. In college, the sisters collected an interesting array of dark traditional folk songs from the Southern Appalachians which they recorded for Tradition records on a legendary album, **Bowling Green**, which inspired and influenced many singers during the folk revival. From this album, reissued in 1997 by Tradition/Rykodisk, their rendition of *I'll Fly Away* made it onto the sound track of the movie *O Brother, Where Art Thou?*

Known for their clear, bell-like harmonies, the Kossoy Sisters performed at the first Newport Folk Festival, in the original production of Woody Guthrie's *Bound for Glory*, and for several years at the Fox Hollow Folk Festival. Although they still sing mostly southern mountain songs, they have adopted other traditional and contemporary songs, accompanying themselves on guitar, banjo, and autoharp.

Come hear the **Kossoy Sisters** at the home of Dennis and Judy Cook in Laurel, MD. **Admission is \$14 non-members; \$10 members. Directions/Info: Dennis & Judy at 301.776.4314.**

Other FSGW Events

FSGW Open Sing • Kensington, MD

Friday, August 3 • 8:30 pm

Come to the FSGW Open Sing on the first Friday of each month. We take turns doing music that's connected (however vaguely) to a given topic. Sing, play, request a song, or just listen. People new to the Sing may present any song regardless of topic. Donations of refreshments are welcome, and singing usually lasts until around 11:45 pm. The August Sing will be held at **Nancy King's** home in **Kensington, MD**. Topic: "Situations and Predicaments" Make of it what you will.... **Info/directions: Nancy at 301.933.3073.**

FSGW Gospel Sing • Colmar Manor, MD

Sunday, August 12 • 4 pm

Gospel sings are held every second Sunday at various homes, from 4 pm to 8 pm, with a break for a covered dish supper at 6 pm. Everyone is welcome! The August Gospel Sing will be at the home of **Mary Jo Hlavaty** in **Colmar Manor, MD**. **Info: 301.699.8833.**



FSGW Sacred Harp Singing • Arlington, VA

Sunday, August 26 • 3:30 pm

St. Peter's Episcopal Church, 4250 North Glebe Road, Arlington, VA. FSGW sponsors monthly singings of early American hymns, anthems, and fugues in four-part harmony on the fourth Sunday of the month (except December) and New Year's Day. The principal sourcebook is *The Sacred Harp* (1991 edition), but *Christian Harmony* (Deason-Parris revision), *Northern Harmony*, and *An American Christmas Harp* are also used. Original shape-note compositions by local singers are also sometimes sung. We sing from 3:30 to 6:30, then share a potluck supper. All are welcome to come and sing or simply listen. Loaner tunebooks are available. Admission is free. Directions: St. Peter's is one-half mile south of Chain Bridge, on the west side of Glebe Road. The church is not visible from Glebe Rd. Turn on Tazewell St. to reach the parking lot. **Info: 301-229-8534.**

Storyswap • Centreville, VA

Saturday, August 25 • 7:30 pm

Storytellers and listeners are invited to share stories and potluck snacks. Free. Co-sponsored by FSGW and Voices in the Glen. August 25 in the home of **Gary Lloyd**. **RSVP/directions 703-968-4746.**

Concerts & Concert Series *Listed by date.*

Hard Bargain Farm • Accokeek, MD

Saturday, August 4 • 8 pm

Connemara and **Moonfire**. Celebrate the full moon with Celtic melodies and mirth.

Ferguson Amphitheater, 2001 Bryan Point Rd., Accokeek. Exit 3A from the DC Beltway, to Rte 210/Indian Head Hwy south. Approx. 8 miles to Bryan Point Rd exit. Signs on right after Farminton Rd. Left at first stop sign, right at next stop sign onto Bryan Point Road. Follow concert signs. Alternate (rain) venue: Moyaone Community Bldg (further down Bryan Point Rd). \$10. **Info: 301.292.5665 wkdys, 301.292.1139 or 301.203.0720 eves/wkds**

House-in-the-Woods • Adamstown, MD

Saturday, August 11 • 7:30 pm

Knock-out harmonies and tunes by **Jen and Scott Smith** of *Naked Blue*, with guest opener **Angie Smith**. House-in-the-Woods is a farm just south of Frederick at the base of Sugarloaf Mountain, about 45 minutes from DC. \$10 suggested donation. Bring a flashlight, and wear comfortable shoes. Reservations required. **RSVPs/directions: www.houseinthewoods.com or 301.607.4048.**

Maryland Hall • Annapolis, MD

Saturday, August 18 • 8 pm

Tim O'Brien & The Crossing with **Footworks Percussive Dance Ensemble**. Clogging, stepdance and modern dance. Reserved seating. Maryland Hall for the Creative Arts, 801 Chase St., Annapolis, MD. **Tickets 410-263-5544 or www.mdhallarts.org.**

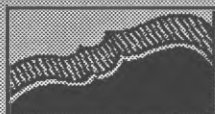
Red Rover • Bethesda, MD

Sunday, August 19 • 7 pm

DC-area singer/songwriter **Jerry Bresee**, comic songwriter **Carla Ulbrich**, and Nashville artist **Rod Picott** are featured this month. Red Rover's monthly concert series features local and nationally-known singer-songwriters and contemporary folk artists. \$10 adults, \$5 children, at the door. River Road Unitarian Church, 6301 River Rd. (at Whittier Blvd.), Bethesda, MD. **Info: Stevekey@aol.com or 202.244.7524; church office 301.229.0400.**



*More
Concerts &
Concert Series
on page 13*



The Folklore Society
of Greater Washington

37th Annual GETAWAY

Friday, October 19 through Monday, October 22, 2001

Camp Ramblewood, Darlington, MD (near Havre de Grace)

What is the Getaway?

For nearly 37 years, FSGW has held its Getaway weekend so that members and friends can share music, stories, crafts and dance in a relaxed camp setting.

The Getaway is:

- Music-making under the trees, on the lawn, by the pond, or by the pool;
- Group singing and jamming at its best;
- Informal workshops on singing, dancing, crafts and storytelling led by FSGW members and friends;
- Trying a craft—quilting, basket-making, puppets, and mask-making have been highlights of past years;
- Great food;
- A terrific weekend for the whole family, with lots of special children's activities;
- A chance to renew old friendships and make new ones;
- A beautiful camp with modern facilities in scenic rolling hills adjacent to the Susquehanna River;
- A wonderful chance for parents to introduce their kids to the magic of group singing and dancing — or to discover that magic for the first time themselves.

Dates and Times

This year's Getaway is scheduled at the height of Fall colors. Camp Ramblewood spreads out over rolling hillsides bordering the Susquehanna River just below the Conowingo Dam, north of Havre de Grace, Maryland. Camp Ramblewood is about 8 miles north of Exits 89 (Havre de Grace) or 93 (Port Deposit) of I-95. It's only 90 minutes North of the I-495 Beltway, in a direction far less subject to traffic jams than Virginia. You may choose to stay over either two or three nights, or you may come for the day if you are unable to get away for the whole weekend. Daytrippers are offered two meals, lunch and dinner each day. (But you must register in advance if you wish to dine!)

The weekend starts Friday evening with a potluck dinner. If you register for two nights, your registration fee covers three wonderful meals and a midnight snack both days on Saturday and Sunday. Three-night registration

gives you an additional night's lodging and breakfast on Monday morning.

Facilities

The dining hall, several common rooms, the pub, the drama barn, the dance barn (with a hardwood sprung floor), and the outdoor pavilion offer all-weather spaces for music making and dancing. NO SMOKING is allowed in any of the camp buildings.

If you choose to go to bed, there are more than 50 rooms, mostly in modern cabins. They feature indoor flush plumbing and hot showers; comfortable beds with box-spring mattresses (bring your own linens and bedding). There are handicapped-accessible cabins with wheelchair-accessible bathrooms for those who need them; please indicate any special needs when you register. Cabins are not heated (bring warm clothes!). If you prefer to bring a tent or your own RV, you may do so, and camp on the grounds (no discounts, but you get guaranteed privacy!). If you don't want to sing, there's a pond with boats (and stocked with fish), tennis courts, ball fields, and a trail through the woods to the banks of the Susquehanna. The immediate area offers antiques, history and horse farms. (See more of Camp Ramblewood at it's website: www.ramblewood.com.)

Volunteer Help

We'll need volunteers to help set up on Friday, to welcome and register guests, to clean up after our Friday night potluck dinner, and to help make sure everything is in order when we check out.

Fees

Getaway fees depend on whether you're an FSGW member or not, and whether you're an adult or a child. See the registration form for the fee that applies to you. Fees are determined by our actual costs to run this event — food, camp rental, etc.

Getaway Activities at a Glance

Friday —

- Register any time after 3 pm.
- Potluck dinner, with new foods added as each person arrives.
- Song swap and music-making into the wee hours.

Saturday —

- Informal music, dance, crafts and storytelling workshops all day.
- Saturday night concert (sign up to tell a story, present a short skit, tune or song).
- Singing and jamming together all night, as late as you care to stay (or stay up, if you're sleeping at camp).

Sunday —

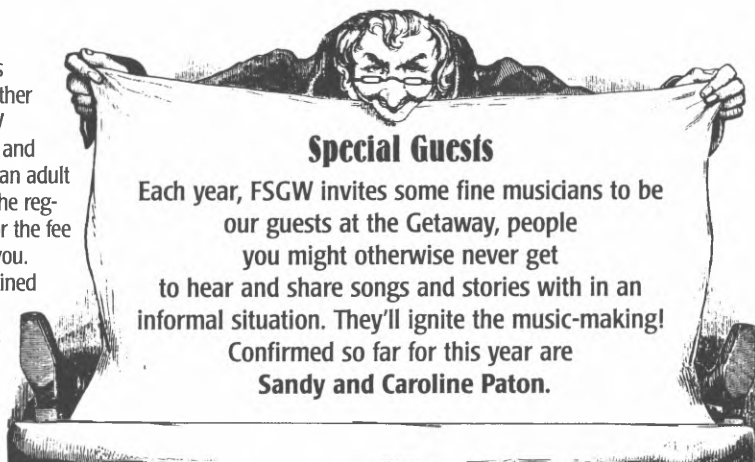
- Informal music, dance, crafts and storytelling workshops all day
- Sunday night concert (sign up if you didn't participate on Saturday).
- More singing and jamming after the concert, into the wee hours.

Monday —

- Parting songs.
- Farewell breakfast in the dining hall.

Special Guests

Each year, FSGW invites some fine musicians to be our guests at the Getaway, people you might otherwise never get to hear and share songs and stories with in an informal situation. They'll ignite the music-making! Confirmed so far for this year are **Sandy and Caroline Paton.**



FSGW Getaway XXXVII

October 19-22, 2001 • Registration Form

Name _____

Home Phone _____

Address _____

Work Phone _____

City _____ State _____ Zip _____

E-mail address: _____

Please confirm receipt of my registration by sending a message to the e-mail address above.

Please DO NOT list my name address phone or e-mail in Getaway Attendees Directory.

Please list ALL who will attend, INCLUDING YOURSELF, select housing preference and compute the cost. List additional names on a separate piece of paper. **Housing choices:** (1) A real bed in a nice room, or (2) Your tent, camper or RV (but there's no discount for that—only guaranteed privacy). **Rooming options:** Single-sex, Children, No Children. Let us know if there's anyone (or any group) you'd like to room with, and if you have any special physical needs.

Name of each registrant (as you would like it on your badge)	Age (if child)	Nights			Meals you plan to eat										FSGW		Housing— I want to room with: (also any special needs)	Cost* (see below)			
		Lodging			Fr	Sa	Sa	Su	Su	Su	Mo	Mo	Mo	Mo	Mo	Mo			Member		
		Fr	Sa	Su																D	B
1.																		Yes	No		\$
2.																		Yes	No		\$
3.																		Yes	No		\$
4.																		Yes	No		\$
5.																		Yes	No		\$
6.																		Yes	No		\$

Payment for overnight Getaway attendees may be done in installments. Deposits of \$30.00 per adult and \$15.00 per child required to reserve space. The balance is due by *October 6, 2001*. After that date space will not be guaranteed. We're sorry, but we cannot give refunds for any cancellations received after *Sunday, October 14th* unless someone else takes your space. There is a \$10.00 processing fee per person for all cancellations.

Total Due: \$ _____
Scholarship Donation: \$ _____
Amount Enclosed: \$ _____
Amount due by October 6: \$ _____

	*Costs:		
	"The whole weekend" 3 Nights (Fri., Sat., & Sun.)	"Most of the weekend" 2 Nights (Fri. & Sat.)	"Daytripper—per day" (includes lunch & dinner)
Members**			
Adults 19 and older:	\$140.00	\$130.00	\$45.00
Children 8 through 18:	\$125.00	\$115.00	\$40.00
Children 3 through 7:	\$67.50	\$57.50	\$25.00
Children 2 and younger:	free	free	free
Non-members:			
Adults 19 and older:	\$155.00	\$145.00	\$50.00
Children 8 through 18:	\$140.00	\$130.00	\$45.00
Children 3 through 7:	\$75.00	\$65.00	\$30.00
Children 2 and younger:	free	free	free

Daytrippers who wish to bring their own food need not register in advance. Day rate (per day) without meals: Members: \$7 adults 18 and older; \$5, ages 8-18; \$3 ages 3-7; 2 and under free. Nonmembers: \$10 adults 18 and older; \$7 ages 8-18; \$5 ages 3-7; 2 and under free.

**Current full members of FSGW. If you are not yet a member, you may join the Society now and get member rates.

Vegetarian? Any acute allergies we should know about?: _____

Thanks to the Linda Lieberman/David Olive Memorial Fund, some scholarship money is available for those who need help in affording the Getaway. If you need assistance, contact Charlie baum (see phone and e-mail below). Contributions to replenish the fund are always welcomed and are tax-deductible! We hold a silent auction at the Getaway to help replenish the fund—you may wish to donate items to auction off to help others who can't afford the whole cost of the weekend.

Children 8 and younger must be accompanied by at least an equal number of adults who are responsible for their care and supervision throughout the event. There is a maximum of 3 children under 12 per adult.

I can help set up on Friday (3-6 pm). I can help clean up Friday night's pot-luck. I can help clean up on Monday (9 am-noon).
 I can help with registration of guests at the camp. I am interested in a scholarship.

Please download and print out this form, and mail with payment to:
FSGW Getaway c/o J. Woods, 8401 Cedar St., Silver Spring, MD 20910

We look forward to seeing you at the Getaway.

If you have any questions, contact Charlie Baum at 301-587-2286 or special@fsgw.org; cc: chbaum@earthlink.net

If you find you cannot come, **please cancel your reservation.**
FSGW Hotline: 202-546-2228 • www.fsgw.org/getaway.htm

35 Years Ago - August 1966

by Joe Hickerson

On August 26, 1966 there was an informal pot luck and singing at the home of Cora and John Jackson. There was no FSGW newsletter this month.

The following were scheduled to perform in the area this month: **Mitchell Trio**, **Highwaymen** (Cellar Door); **Pete Seeger**, **Kingston Trio** (Shady Grove); **Rumanian Folk Ballet**, **Peter Paul & Mary**, **Odetta** (Carter-Barron); **New Lost City Ramblers** with commentary by **Archie Green** (Smithsonian Institution); **Donald Leace**, **Dawn & Joe Latham** (Alexandria Folklore Center); **Frank Fletcher**, **Andy Wallace** (Dumbarton Methodist Church); **Kim Mulligan** (Matt Kane's Bit O' Ireland); **Benny & Vallie Cain & The Country Clan** (Jimbo's); **Bob Goff's Bluegrass Buddies** (Dom-Mar Restaurant); **Spruce Mountain Boys** (Buddy's Bar and Andrews AFB); **Francis Tinsman & The Potomac Mountain Boys** (Sterling Puritan Club); **Virginians** (Rockville Carnival, Gaithersburg Fair, and Crossroads Club); **Virginia Ramblers** (Phil's Truck Stop, Vienna Moose Lodge, and Margaret's Restaurant). These events were announced in issues of *Washington Folk Strums* and *Bluegrass Unlimited*. Two of the events were reviewed by **Joe Hickerson** in the *Washington Star*.

Meanwhile, the Library of Congress Archive of Folk Song registered the following researchers and visitors: **Dorothy Gaus** (Catholic Univ.); **Archie Green** (Univ. of Illinois); **Judge Earl Hoover** (Cleveland); **Moritz Jagendorf** (NYC); **Ed Kahn** (UCLA); **George Kay** (DC); **Ed McGandy** (Purdue Univ.); **Tru Mitsui** (Indiana Univ.); **Jim Potter** (Bucks Co. Folk Music Soc.).

Joe Hickerson, head of the Archive of Folk Culture at the Library of Congress until his retirement in 1998, is available to sing and lecture about folk music. A founding member of FSGW, he has served as the Society's President, Program Chair, and Book Review Editor, and now contributes a monthly column describing FSGW and other area events 35 years ago. If any readers have relevant flyers, clippings, etc. from 1966-67, please mail copies to Joe at 43 Philadelphia Avenue, Takoma Park, MD 20912 for possible inclusion in this column.

Local Folkal

The FSGW Newsletter provides a listing of local performers who appear at small venues. Send your name or band name, very brief description of your musical style, and web address, e-mail, and/or phone number to the Newsletter Editor.

SOLO PERFORMERS

BRESEE, JERRY
<http://www.shenandoahacoustics.com/jbresee>
BROWN, MARY BYRD.
<http://www.geocities.com/SunsetStrip/Stage/8829/>
COOK, JUDY judy@ceimd.com or
<http://www.ceimd.com/folksing.htm> or 301.776.4314
DURFOR, CHUCK <http://hometown.aol.com/cdurfor>
 Fingerstyle guitar.
GELLMAN, STEVEN Hiddenpoet@aol.com or
www.HiddenPoet.com
HICKERSON, JOE Jhick@starpower.net or 301.270.1107
 Vintage paleo-acoustic folksinger
HOAG, ANDREA <http://www.andreaHoag.com> or
 301.565.2777 Fiddler, singer, wordsmith.
KAMINSKY, RAY <http://www.earbuzz.com/raykaminsky>
 Piedmont and Delta blues
KENNELLY, CLETUS www.cletuskennelly.com
KEY, STEVE stevekey@aol.com or 202.244.7524
 Singer/songwriter, guitar teacher
MAGILL, NANCY mizmagill@aol.com. 301.951.6242
 Jazz/blu/folktunes
MARKLEY, LENA AND SANFORD <http://www.lena-and-sanford.com>
McKNIGHT, ANDREW <http://songs.com/andrew>
McVEY, JOHN <http://www.johnmcvey.com>
MUIR, CHRISTINA <http://songs.com/hotsoup>


PARSONS, BILL bill@songs.com or www.billparsons.com
PRASADA-RAO, TOM <http://songs.com/tp>
ROSS, GARTH <http://www.garthross.com>
SCHWARTZ, ERIC <http://www.ericsschwartz.com>
TAYLOR, LISA
<http://www.shenandoahacoustics.com/ltaylor>
TWOHY, MARY SUE www.marysuetwohy.com
TYSON, HERB <http://www.herbtyson.com>
WILCOX, DOUG ALAN www.dougalanwilcox.com
 Contemporary americana, acoustic pop.

GROUPS

ALEXANDRIA KLEZTET kleztet@aol.com or <http://members.aol.com/kleztet/> or 410.521.0616. Traditional and innovative klezmer.
BILL KIRCHEN & TOO MUCH FUN www.billkirchen.com
 Roots rock and rockabilly.
BLUE MOON COWGIRLS kcollin@aol.com or
<http://members.aol.com/kcollin/bluemoon/> or
 301.270.2586. Acoustic early country.
BOTTOMLAND bottomland@hotmail.com or
www.bottomland.org or 301.587.1198
CORAL CANTIGAS www.cantigas.org or 301.816.2314
 Spanish/Hispanic choral music.
HOT SOUP hotsoup@pobox.com or
www.hotsoup trio.com Harmony and laughter.

Continued on page 12

August 2001

Sunday	Monday	Tuesday	Wednesday	Thursday
<p><i>All times are PM unless otherwise noted</i></p>			<p>1</p> <p>7:30 Swiss Embassy Dance 7:30 DC Israeli Folk Dance 8 Potomac Israeli Folk Dance 8 FSGW Eng. Country 8 Balt. Contra (Lovely Lane) 8 Baldwin's Station concert</p>	<p>2</p> <p>7:30 <i>Down</i> Movie 7:30 FSGW</p>
<p>5</p> <p>3 Glen Echo Waltz 7:30 FSGW Sun Nite Contra 8 DC Folk Guitar Workshop</p>	<p>6</p> <p>7 Bluemont Morris 7:30 Bethesda Intl. Dance 8 FSGW Board Mtg 8 Arlington Intl. Dance 8 Taylor Made Squares</p>	<p>7</p> <p>7:30 Herndon-Reston Folk Club 8 Shanty Sing (MD) 8 Arlington Intl. Dance 8 Taylor Made Squares</p>	<p>8</p> <p>7 Laurel Jam Session 7:30 Swiss Embassy Dance 7:30 DC Israeli Folk Dance 8 Potomac Israeli Folk Dance 8 FSGW Eng. Country 8 Balt. Contra (Lovely Lane) 8 Baldwin's Station concert 8 Vic's Music Corner concert</p>	<p>9</p> <p>7:30 FSGW 7:30 Chevy 8 Mt. Ve 8 Foggy</p>
<p>12</p> <p>2 CABOMA Jam 4 FSGW Gospel Sing 7:30 FSGW Sun Nite Contra</p>	<p>13</p> <p>7 Bluemont Morris 7:30 Bethesda Intl. Dance</p> <p><i>Postmark deadline Songwriters Association of Washington 18th Annual Mid-Atlantic Song Contest.</i></p>	<p>14</p> <p>7:30 Herndon-Reston Folk Club 7:45 Herndon Eng. Country 8 Arlington Intl. Dance 8 Taylor Made Squares</p>	<p>15</p> <p>7:30 Swiss Embassy Dance 7:30 DC Israeli Folk Dance 8 Potomac Israeli Folk Dance 8 FSGW Eng. Country 8 Balt. Contra (Lovely Lane) 8 Baldwin's Station concert</p>	<p>16</p> <p>7:30 FSGW 7:30 Chevy 8 Mt. Ve 8 Foggy</p>
<p>19</p> <p>3 Glen Echo Waltz 7 Red Rover Concert 7 Irish Trad. Music Seisiun 7:30 FSGW Sun. Nite Contra</p>	<p>20</p> <p>7 Bluemont Morris 7:30 Bethesda Intl. Dance</p>	<p>21</p> <p>7:30 Herndon-Reston Folk Club 8 Shanty Sing (VA) 8 Arlington Intl. Dance 8 Taylor Made Squares</p>	<p>22</p> <p>7 Laurel Jam Session 7:30 Swiss Embassy Dance 7:30 DC Israeli Folk Dance 8 Potomac Israeli Folk Dance 8 FSGW Eng. Country 8 Balt. Contra (Lovely Lane) 8 Baldwin's Station concert 8 Vic's Music Corner concert</p>	<p>23</p> <p>7:30 FSGW 7:30 Chevy 8 FSGW Tess 8 Mt. Ve 8 Foggy</p>
<p>26</p> <p>2 CABOMA Jam 3:30 FSGW Sacred Harp Singing 7:30 FSGW Sun. Nite Contra</p>	<p>27</p> <p>7 Bluemont Morris 7:30 Bethesda Intl. Dance</p>	<p>28</p> <p>7:30 Herndon-Reston Folk Club 7:45 Herndon Eng. Ctry 8 Arlington Intl. Dance 8 Taylor Made Squares</p>	<p>29</p> <p>7:30 Swiss Embassy Dance 7:30 DC Israeli Folk Dance 8 Potomac Israeli Folk Dance 8 FSGW Eng Country 8 Balt. Contra (Lovely Lane) 8 Baldwin's Station concert</p>	<p>30</p> <p>7:30 FSGW 7:30 Chevy 8 Mt. Ve 8 Foggy</p>



Thursday	Friday	Saturday
<p><i>From the Mountain</i> Premiere! V Intl. Dance</p>	<p>3</p> <p>8 Charlottesville Contra 8:30 Open Sing 8:30 Friday Nite Contra Dance 8:30 Greenbelt Intl. Folk</p>	<p>4</p>  <p>1 Archie Edwards Blues Jam 8 FSGW House Concert: <i>Kossay Sisters</i> 8 Shepherdstown Contra 8 DC Folk Guitar 8 Hard Bargain Farm concert 9 Swing Dance, Glen Echo</p>
<p>Intl. Dance Chase Intl. Dance mon Intl. Dance Bottom Morris</p>	<p>10</p> <p>7:30 Songwriters Open Mic 8:30 Friday Night Contra 8:30 Greenbelt Intl. Folk</p> <p><i>FSGW September Newsletter Deadline!</i></p>	<p>11</p> <p>1 Archie Edwards Blues Jam 7:30 House-in-the-Woods concert 7:30 Chaptico Contra 8 Fairfax Ceili 8 Balt. Contra (St. Mark s) 9 Cajun/Zydeco Dance, Glen Echo</p>
<p>Intl. Dance Chase Intm. Dance mon Intm. Dance Bottom Morris Dancers</p>	<p>17</p> <p>8 Dupont Music Circle 8 Charlottesville Contra 8:30 Friday Night Contra 8:30 Greenbelt Intl. Folk</p>	<p>18</p> <p>1 Archie Edwards Blues Jam 8 Crownsville Contra Dance 8 Hemdon Eng. Country 8 Lancaster PA Contra Dance 8 Footworks Dance Ensemble</p>
 <p>Intl. Dance Chase Intl. Dance V House Concert, LeBlanc mon Intl. Dance Bottom Morris</p>	<p>24</p> <p>8:30 Friday Night Contra 8:30 Greenbelt Intl. Folk</p>	<p>25</p> <p>1 Archie Edwards Blues Jam 1:30 Hammer Dulcimer Jam 7:30 FSGW Storyswap 8 Frederick Contra Dance</p>
<p>Intl. Dance Chase Intl. Dance mon Intl. Dance Bottom Morris</p>	<p>31</p> <p>8 Charlottesville Contra 8:30 Friday Night Contra <i>in the Bumper Car Pavilion</i> 8:30 Greenbelt Intl. Folk</p>	<p><i>A reminder from the newsletter editor:</i> EVENTS ON THE CALENDAR ARE CLOSER THAN THEY APPEAR.</p>



**ADVANCE
 WARNING
 FSGW**

2001 - 2002

Wednesday, September 5:
 Irish singer **TIM LYONS**
 house concert, location TBA.

Saturday, September 8:
 British squeezebox player &
 ballad singer **BRIAN PETERS.**
 Glen Echo Town Hall

Saturday, September 15:
FSGW MONTHLY PROGRAM
 Performer TBA,
 WES Auditorium, DC

Friday, October 19- Sunday, October 21:
38TH ANNUAL FSGW GETAWAY
 Camp Ramblewood, MD

Friday, November 2:
GORDON BOK AND BOB ZENTZ
 Bradley Hills Presbyn. Church,
 Bethesda, MD.

Saturday, November 17:
FSGW MONTHLY PROGRAM
 Performer TBA
 WES Auditorium, DC

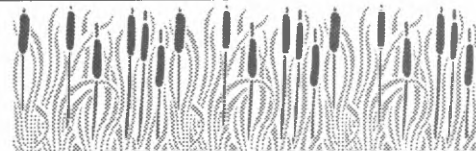
Saturday, December 15:
 FSGW Monthly Program
 Performer TBA,
 WES Auditorium, DC

**Friday, April 5-
 Sunday April 7, 2002:**
**POTOMAC SACRED HARP
 CONVENTION**
 Location TBA

**Friday, April 12-
 Sunday, April 14, 2002**
**20TH ANNUAL CHESAPEAKE
 DANCE WEEKEND**
 Camp Letts, Edgewater, MD

**ADVANCE WARNING
 NON-FSGW**

October 5-8
SAVOY SWINGS AGAIN at Ramblewood,
 (<http://www.reson.com/dance/tj&s.htm>).



Local Folkal *continued from page 9*

KLEZCENTRICITY www.klezcentricity.com or djg@well.com or 301.589.4847 Yiddish-American music.

KREWE OF RENEGADES KreweRC@earthlink.net or www.kreweofrenegades.com or 301.942.5217. New Orleans R&B, funk, and soul.

LIBERTY DAWNE AND THE OVERHAULERS
Libertydawne@erols.com Old-fangled country music.

OKLAHOMA TWISTERS www.oktwisters.com or okt@pressroom.com or 703.536.9839. Western Swing.

SQUEEZE BAYOU
<http://members.aol.com/kcollin/squeeze/index.html> or 301.270.2586. Cajun dance music.

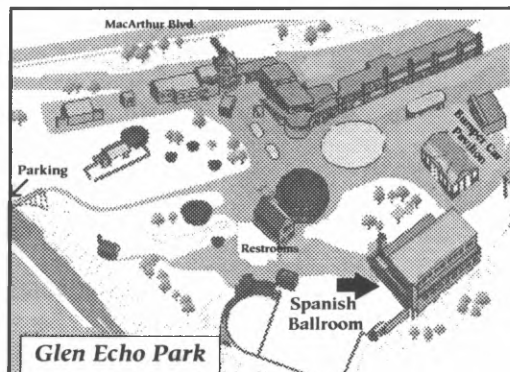
URBAN LEGENDS www.theurbanlegends.com or urban.legends@pressroom.com or 703.532.4599. Traditional and contemporary acoustic music.

DIRECTIONS TO FREQUENT VENUES:

Washington Ethical Society (WES) Auditorium. 7750 16th St., NW, just south of the intersection of Kalmia Rd. and 16th St., about four blocks inside the DC/MD line.

From the Beltway: Take the Georgia Avenue South exit. Stay in either right lane. Go 0.4 miles from the exit ramp, where the right lanes curve and put you on 16th St South. Follow 16th past East-West Hwy (Rte 410); cross the MD/DC line at Portal Dr. Kalmia Road is the first traffic signal south of the line, and WES is the second building on the right after you cross Kalmia. You may park on Kalmia Road by turning right at the light, or on either side of 16th St.

Spanish Ballroom, Glen Echo Park. 7300 MacArthur Blvd. at Goldsboro Rd, in Glen Echo, MD. The Ballroom is the large building (no exterior sign), located next to the playground and near the carousel.



From the Beltway:

MARYLAND SIDE: at 2-lane Exit 40 take the left fork for Cabin John Parkway. Where Cabin John merges with Clara Barton Pkwy, move into the left lane, under the overhang.

VIRGINIA SIDE: get into the far right hand lane at the top of the bridge. At the first fork, bear right.

Stay in the left lane; watch for Cabin John traffic merging from the right at the overhang.

MD/VA: Watch for signs to MacArthur Blvd. Make a very sharp hairpin turn and move immediately into the right lane. At the T intersection/stop sign, turn left onto MacArthur Blvd. Upper parking lot on the left. For lower parking lot, go around the small traffic circle and make the first left onto Oxford St.

By public transportation: Take the #29 bus from the Friendship Heights Metro Station. Ask the driver to let you know when to get off for Glen Echo Park. The bus stops running before the dance ends. Ask the dance coordinator to announce you need a ride. We've never left anybody at the park. Last bus leaves Friendship Heights Metro at 7:30 pm.

Glen Echo Town Hall
6106 Harvard St., Glen Echo, MD:

From the Beltway:

MARYLAND SIDE: at 2-lane Exit 40 take the left fork for Cabin John Parkway. Where Cabin John merges with Clara Barton Pkwy, move into the left lane, under the overhang.

VIRGINIA SIDE: get into the far right hand lane at the top of the bridge. At the first fork, bear right. Stay in the left lane; watch for Cabin John traffic merging from the right at the overhang. **MD/VA:** Watch for signs to MacArthur Blvd. Make a very sharp hairpin turn and move immediately into the right lane. At the T intersection/stop sign, turn left onto MacArthur Blvd. Go around the small traffic circle. Third left is Harvard Ave.

PLEASE NOTE: Please park in the lot behind the hall, on University Drive, or on the east side of MacArthur, NOT on Harvard Street.

Concerts & Concert Series, continued from page 6**Baldwin's Station • Sykesville, MD****Wednesdays • 8 pm**

7618 Main St., Sykesville, MD 21784. Productions by Uptown Concerts, a non-profit organization affiliated with the North American Folk Alliance. **Info: Joyce R. Sica, 410.922.5210 or uptownconcerts@aol.com. Tickets/reservations: 410.795.1041.**

August

- 8 Bryan Bowers
- 15 Al Petteway & Amy White
- 22 Richard Shindell
- 29 Kat Eggleston

Vic's Music Corner • Rockville, MD**2nd and 4th Wednesdays • 8 pm**

2nd and 4th Wednesdays, dedicated to introducing acoustic singer/songwriters from across the country to the greater Washington area. At O'Brien's, 387 E. Gude Drive, Rockville, MD. Smoke-free. **Tickets: \$12 Reservations: 301.984.1897.**

August

- 8 Kim and Reggie Harris with Magpie
- 22 Hot Soup

IMT Concerts • Silver Spring, MD**Returning in September • 8 pm**

Paint Branch Unitarian Universalist Church meeting room, 3215 Powder Mill Road, Silver Spring, MD. The non-profit Institute of Musical Traditions is supported in part by the Maryland State Arts Council, the Arts Council of Montgomery County, Prince George's Arts Council, Heyman Mailing Service. **Tickets: 301.263.0600 or PO Box 5930, Takoma Park, MD 20913. All major credit cards accepted.**

House of Musical Traditions • MD**Sundays • 1 - 3 pm**

7040 Carroll Avenue, Takoma Park, MD. Free. Weather permitting, outside. Alternate venue (rain): large drum room at the store. Make your Sunday trip to the Farmer's Market complete with a stop at HMT for free live music! Possibly no concerts in August because of the heat. **Info: 301.270.9090**

**Jams/Open Mics/Audience Participation****By day of the week****SUNDAYS:****CABOMA Jam • Arlington, VA****Sunday, August 12 and 26 • 2 - 6 pm**

Capitol Area Bluegrass and Old-time Music Association (CABOMA) holds jams the 2nd and 4th Sundays of each month, Lyon Park Community Center, corner of N. Filmore and Pershing, Arlington, VA. **Info: Dave 301.274.3441.**

Irish Traditional Music Seisiun • Wheaton, MD**Sunday, August 19 • 7 - 10 pm**

Irish traditional music seisiun with Dennis Botzer (fiddle, flute), third Sundays, Royal Mile Pub, 2407 Price Avenue, Wheaton, MD. Seisiun musicians welcome. **Info: Dennis 301.422.6550.**

TUESDAYS:**Sea Shanty Open Pub Sings • MD/VA****Tuesday, August 7 and 21 • 8 pm**

The Ship's Company chanteymen host open mike sea chantey sings, twice a month. 1st Tuesdays at 8 pm: The Royal Mile Pub, 2407 Price Ave., Wheaton, MD; **tel. 301.946.4511**; no cover/minimum. Arrive early for a table. 3rd Tuesdays at 8 pm: Cate's Bistro, 715 King Street, Alexandria, VA; **tel. 703.549.0533.**

Participation is not mandatory, but encouraged. Requests are honored if possible. Mostly a cappella, but instruments are welcome. **Info: Don Stallone 301.949.5684.**

Folk Club of Herndon-Reston • Herndon, VA**Tuesdays • 7:30 pm**

Tortilla Factory, 648 Elden Street, Herndon, VA. Most Tuesday evenings, open mic format. Each performer gets 12 minutes, including setup time. \$1 donation. 2nd Tuesdays includes 25-minute member showcase. Smoke-free. **Info: 703.435.2402.**

WEDNESDAYS:**Laurel Jam Session • Laurel, MD****Wednesday, August 8 and 22 • 7 - 10 pm**

Adults who enjoy acoustic music are invited to come and sing, play or listen to folk, bluegrass, and other traditional music in an informal setting. Phelps Senior Center, 701 Montgomery Street, Laurel, MD. **Info: 301.776.6168 during business hours.**

FRIDAYS:**Songwriters Open Mic • Bethesda, MD****Friday, August 10 • 7:30 pm**

Songwriters Association of Washington (SAW) monthly open mic, host Steve Key. Sign up starting at

Jams/Open Mics/Audience Participation, *continued from page 13*

7. Barnes and Noble, 4801 Bethesda Ave., Bethesda, MD Free. Original, non-cover material only, please. **Info: 301-654-8434 or www.saw.org.**

Dupont Music Circle • Arlington, VA *Friday, August 17 • 8 pm*

Since 1983, the informal Dupont Music Circle has met to sing and play English, Scottish, Welsh, Irish, Quebecois, American, and other traditional music just for fun. **Confirmation/directions: Liz 703.658.0957.**

SATURDAYS:

DC Folk Guitar Workshop • Washington, DC *Saturday, August 4 • 8 - 11 pm*

Only \$5! (No one turned away for lack of funds). The Potter's House 1648 Columbia Road, NW (Adams-Morgan). 90 minutes of group instruction, then 90 minutes of private performance opportunities (share your songs in a safe, supportive environment!) Please bring your guitar, a capo, and *Rise up Singing* (copies available to purchase). Want to teach a tune? We need you too! Members meeting and potluck starts at 7 pm. **Info: 202.232.2885.**

Hammer Dulcimer Jam • McLean, VA *Saturday, August 25 • 1:30 - 4:30 pm*

Hammer dulcimer players meet most months to swap tunes and play. Other acoustic instruments welcome August meeting at Dolley Madison Library, 1244 Oak Ridge Avenue, McLean, VA. **Info: Ellie 703.578.3106 or eholapple@aol.com.**

Caffé Florian Coffeehouse • Camp Springs, MD *Returning in September • 7:30 pm*

Open mike, second Saturdays, September through June; acoustic musicians, songwriters, storytellers, and poets. Sign-up at 7:30 pm. Free. Davies Memorial Unitarian Church, 7400 Temple Hill Rd., Camp Springs, MD, 0.3 mi south of Allentown Rd. **Info: Den Frumen 301.856.2573.**

Archie Edwards Blues Jam • DC *Saturdays • 1 pm*

The Archie Edwards Blues Heritage Foundation holds an acoustic blues jam almost every Saturday afternoon starting about 1 pm. All skill levels welcome. 2007 Bunkerhill Road, NW, DC. **Call to confirm: 202.526.7539.**

Workshops, Weekends, Festivals & Contest

Ear-Trade • Harpers Ferry, WV *Sunday, August 19 to Saturday, August 25*

Learn to play medieval, Renaissance, Appalachian, Irish, and other tunes by ear. *Hesperus* members **Scott Reiss** (recorder and Irish whistle), **Tina Chancey** (violin and fiddle), and **Bruce Hutton** (guitar and banjo) will teach you to play without written music. No previous experience necessary, just a basic ability to play your instrument of choice. \$700, including double occupancy at Hilltop House, overlooking Harpers Ferry, WV. **Info: 703-525-7550 or scottreiss@cs.com.**

SummerTunes 2001 • Frederick, MD *Saturday, August 25 • 9:30 am to 5 pm*

An all-day workshop with **Liz Donaldson** and **Alexander Mitchell**, plus a chance to play that evening for the monthly Frederick contra dance with caller **Robbin Schaffer**. \$40. **Info: Marguerite Plank at 717-334-5392 or mvhplank@netrax.net.**

Takoma Park Folk Festival • Takoma Park, MD *Sunday, September 9 • 11 am - 6:30 pm*

Six stages featuring continuous music and dance; craft sales; community group tables; international foods. Admission free. **Info: 301-589-3717 or www.tpff.org.**

Takoma Park Municipal Complex, corner of Philadelphia and Maple Avenues.

Terpsichore's Holiday • Jackson's Mill, WV *Thursday, December 27, 2001 to Tuesday, January 1, 2002*

A wonderful way to welcome in the New Year with family and friends. **Ron Buchanan** (contras, squares, swing), **Bill Alkire** (English, clogging), **Bruce Sagan** (Scandinavian), **De Laura Padovan** and **Bill Wellington** (kids program). Great musicians (**Steve Hickman**, **Lynne Mackey**, **Marty Taylor** and more). **Info: Bob at 301.589.7539 or talibob@starpower.net.**

18th Annual MidAtlantic Song Contest

Sponsored by the *Songwriters' Association of Washington* (SAW), *Taxi*, *Oasis*, *BMI*, and *Writer's Digest* books. Ten categories for entries. Grand prize \$1,000. Winners' cuts featured on a CD. **Info: 1-800-218-5996 or www.saw.org.**



Dance Classes Class listings may be submitted by FSGW members only.

Scandinavian

Beginning Scandinavian

NIH Fitness/Dance (Bldg T-39), Bethesda, MD.

Thursday August 23 ONLY: 8 - 9:30 pm. Learn hambro, schottish, waltz, rorospol, zweifacher, and other couple turning dances. Singles, couples, beginners, and advanced dancers welcome. Mostly recorded music. Class is continuous; some hambro is done every time. Wear smooth soles for turning. Cost \$5. **Info:** Lisa Brooks 301.654.7667, 301.435.5544 or lisa_brooks@nih.gov.

Directions: Enter NIH at Wisconsin and Center Drive, go to the south center of NIH, and park in the NIH permit parking next to the building, or walk eight minutes from the Medical Center Metro stop. See map on the flyer.

Hambro and Schottische Workshop

Saturday, August 25, 3 - 5 pm

Sponsored by the Friday Night Dancers. NIH Fitness and Dance Center (Bldg T-39), Bethesda, MD. These two turning dances, frequently featured at Glen Echo, will be taught from the beginning. Wear smooth-soled shoes. Air-conditioned. Cost \$5. **Info:** Lisa Brooks 301.654.7667, 301.435.5544, or lisa_brooks@nih.gov or Don Cobean philocetes@erols.com or 202-537-1154. See Directions under Beginning Scandinavian, above.

Waltz

Beginning Waltz

Glen Echo Spanish Ballroom, Glen Echo Park

(Directions, page 12)

Donna Barker and Mike Marcotte.

Four-week series, Thursdays, September 6, 13, 20 and October 4 (no class 9/27) 7 - 8:15 pm. \$43/person. Register on the first night of class. No partner required. **Info:** <http://users.erols.com/swing4me> or swing4me@erols.com or Donna Barker 703-976-0375

Intermediate Waltz

Glen Echo Spanish Ballroom, Glen Echo Park

(Directions, page 12)

Donna Barker and Mike Marcotte.

Three-week series. Thursdays, July 26, August 2, August 9. 7 - 8 pm, \$26/person. Register on the first night of class. No partner required. **Info:** <http://users.erols.com/swing4me> or swing4me@erols.com or Donna Barker 703-976-0375

Swing

Beginning Swing

Glen Echo Spanish Ballroom, Glen Echo Park

(Directions, page 12)

Donna Barker and Mark Ormsby.

Four-week series, Thursdays, September 6, 13, 20 and October 4 (no class 9/27)

Jitterbug, 8:15 - 9:30 pm \$43/person.

Lindy, 9 - 10:15 pm \$43/person.

Register on the first night of class. No partner required.

Info: <http://users.erols.com/swing4me> or

swing4me@erols.com or Donna Barker 703-976-0375

Intermediate Swing.

Glen Echo Spanish Ballroom, Glen Echo Park

(Directions, page 12)

Donna Barker and Mark Ormsby.

Three-week series. Thursdays, July 26, August 2, August 9.

Jitterbug, 8 - 9:30 pm, \$36/person

Lindy, 9 - 10:30 pm, \$36/person

Register on the first night of class. No partner required.

Info: <http://users.erols.com/swing4me> or

swing4me@erols.com or Donna Barker 703-976-0375

Beginning/Intermediate Swing

Tap Room, 146 East Maple Avenue, Vienna, VA.

Donna Barker and Ray Kearney. Every

Wednesday.

Beginning jitterbug at 7:15, Intermediate jitterbug at 8, followed by social dancing (DJ) until 11 pm. Lesson and dance: PSDC Members \$12, Non-members \$15; dance only: Members \$9, Non-members \$11. Drinks included. **Info:** <http://users.erols.com/swing4me> or swing4me@erols.com or Donna Barker 703-976-0375

Intermediate Swing/Lindy

**Lyon Village Community House
1920 N. 20th St., Arlington, VA.**

7 - 7:45 pm, Improvisation for swing dancers; 7:45 - 8:30 pm, Intermediate swing with "Lindy Flair" and social dancing (DJ) 8:30 - 10:30. Lesson and dance: PSDC Members \$10, Non-members \$12; dance only: Members \$7, Non-members \$9. Refreshments included.



Dances

Listed by type, and by date or day of week within each type

• • • CAJUN/ZYDECO • • •

Saturday, August 11 • Glen Echo, MD

Chris Ardoin & Double Clutchin' will perform at the Spanish Ballroom (Directions, page 12). Workshop from 8 - 9 pm; dance 9 - midnight. Admission \$10. Info: ewicker@concentric.net or Crawfish Productions at 301-309-0895.

• • • CONTRA • • •

Wednesdays:

BFMS Lovely Lane Contra Dance • Baltimore, MD

Wednesdays, 8 - 11 pm

Lovely Lane Church, 2200 St. Paul St., Baltimore, MD. Sponsored by the Baltimore Folk Music Society. All dances are taught and walked through. Beginners are always welcome and are encouraged to arrive promptly at 8 pm. Nationally known musicians and callers appear regularly. Free beginners' workshops on the 2nd and 4th Wednesdays at 7:30. Admission: \$6 for BFMS/FSGW members, \$8 for Non-members. Info: www.bfms.org or 410.321.8419.

August

- 1 Caller: **Barbara Groh** from North Carolina. Band: **Ted Ehrhard** (fiddle) and **Laurie Fisher** (piano).
- 8 *Beginners' Workshop*. Caller: **Susan Taylor**. Band: **Contra Rebels**: **Reed Martin** (banjo), **Bob Buckingham** (fiddle), and **Todd Clewell** (guitar).
- 15 Caller: **Joyce Duffy-Bilanow**. Band: **Mostly Mortal Wombat**: **Carl Friedman** (fiddle), **Michael Friedman** (piano), and **Ralph Barthine** (guitar).
- 22 *Beginners' Workshop* Caller: TBA. Band: **Terpsichore**: **Liz Donaldson** (piano), **Elke Baker** (fiddle), and **Ralph Gordon** (bass).
- 29 Caller: **Dave Rupp** from Philadelphia. Band: **Fiddlestyx**: **Steve Hickman** (fiddle), **John Devine** (guitar), and **Jim Bienemann** (bass).

Fridays:

Friday Night Contra Dances • Glen Echo, MD

Fridays • 8:30 - 11:30 pm

The Friday Night Dancers, in cooperation with the National Park Service, sponsor contra dances (with occasional squares and couple dances) to live music in the Spanish Ballroom (Directions, Page 12). Free beginners' workshop at 7:30 pm. Dance starts at 8:30. Admission: \$6. To play for or call a dance, send email to fndbooking@folkdancer.com. For other information, see or call the **Friday Night Dance Hotline 202.216.2116**.



August

- 3 Caller and band TBA
- 10 The fabulous **Glen Echo Open Band**. Caller TBA.
- 17 **Darlene Underwood** calls to **Brittany Bay** (**Fred Stoll**, fiddle; **Dan Wolking**, 6- and 12-string guitar; **Tim Schaiper**, hammered dulcimer, whistles, percussion, mandolin; and **Guy Byars**, string bass, concertina).
- 24 Caller TBA. Music by **Laura Lengnick** (fiddle) and **Friends**.
- 31 *Dance in the Bumper Car Pavilion*. Caller and band TBA

Charlottesville Contra Dance • Charlottesville, VA

1st, 3rd, and 5th Fridays • 8 - 11 pm

At MACAA. Rte 29 South to Charlottesville. East onto Rte 250. Just after the light at McIntire Rd., turn north on Park St. Go a block to the first marked pedestrian crosswalk and turn left into the alley. Beginners' workshop at 7:30. Admission \$6. Info: **Rob Craighurst** at 804.971.8863.

Saturdays:

First Saturday Contra Dance • Shepherdstown, MD

Saturday, August 4, 8 - 11 pm

Barbara Groh will call to music provided by **Laurie Fisher** (keyboards) and **Ted Ehrhard** (fiddle). The dance is held at the air-conditioned War Memorial Building (Men's Club), corner of German and King Streets. Free beginners' workshop at 7:15. Admission \$5 Members, \$6 Non-members, \$4 dancers under age 26. Dancers must bring soft-soled shoes. Info: www.w4c.dance/shepherdstown or 304.725.0266 or 304.876.2169.

Second Saturday Contra Dance • Baltimore, MD

Saturday, August 11, 8 - 11 pm

Susan Taylor calls to the fantabulous Baltimore Open Band at Baltimore Folk Music Society's monthly contra dance at St. Mark's on the Hill Parish Hall, 1620 Reisterstown Road, Baltimore.

Beginners, singles, couples, and families are welcome. No experience necessary; you don't need to bring a partner. Beginners' workshop at 7:30, dance from 8 to 11 pm. Free beverages served at the break; participants are invited to bring goodies to share. Admission: \$8, \$6 for BFMS members and affiliated groups. Discounts for children, families, students. Info: **Ralph Barthine** at 410.561.4573 or www.bfms.org.

Location: 1/2 mile inside the Baltimore Beltway (695) at Exit 20 South.

SMTMD Contra Dance • Chaptico, MD

Saturday, August 11 • 7:30 - 10 pm

Southern Maryland Traditional Music and Dance hosts a monthly contra dance in St. Mary's County,

Dances continued

MD. Usually at the Christ Church, but please note that the location may change, so telephone or check the website one week beforehand. Calling by **Lou Shapiro** to music by the **Southern Maryland Open Band**. Potluck supper at 6 pm; beginners' workshop at 7 pm. No experience necessary, and you need not bring a partner. A walkthrough of each dance will ensure that the whole family can participate. Admission \$6. **Info: www.tqci.net/~smtmd/ or Brenda Elwood at 301.769.3840.**

Third Saturday Contra Dance • Crownsville, MD *Saturday, August 18 • 8 - 11 pm*

Annapolis Traditional Dance Society. **Susan Hankin** calls to **Mostly Mortal Wombat** (Carl Friedman, fiddle; **Ralph Barthine**, guitar; and **Michael Friedman**, piano). Beginners' workshop at 7:30. No partner or experience needed. Admission \$6 ATDS Members, \$8 Non-members. Fraternal Order of Police Hall, Rte 178, Crownsville, MD. Directions: Rte 50 to Annapolis; take Exit 23, MD 450/178 North. North 4.6 miles on Rte 178. Hall is on the right. **Info: Joan O'Sullivan, 410-224-8488 or http://w4c.com.dane.atds.**

Lancaster Contra Dance • Lancaster, PA *Saturday, August 18 • 8 - 11 pm*

Lancaster County Park, Pavilions 11 and 12. Potluck supper at 6:30. Beginners' workshop at 7:15. **Info: Shane at 717-390-7277.**

Fourth Saturday Contra Dance • Frederick, MD *Saturday, August 25 • 8 - 11 pm*

Summertunes Band, led by **Alexander Mitchell** and **Liz Donaldson**, with **Robbin Schaffer** calling. Free beginners' workshop at 7 pm. Admission \$6. Seventh Day Adventist Hall. **Info: Boe Walker at 301.694.6794 or www.w4c.com/dance/mmfac/.** Directions: I-270 North to exit 31A (85 North to Market Street). Cross I-70 at a busy intersection with traffic coming off Route 70. Left on Adventist Drive. Right into the former Seventh Day Adventist School, a brick building with brown metal roof near both Harry Grove Stadium and the temporary home of the Museum of Civil War Medicine.

• • • *English Country* • • •

Mondays

Baltimore Folk Music Society • Baltimore, MD

St. Mark's on the Hill Parish Hall, 1620 Reisterstown Road, Baltimore, MD. English Country Dancing is joyous, lively movement to elegant music in a friendly, informal setting. The figures are simple, and each dance is taught and walked through. New dancers are always welcome. Beginners' workshop on the first Monday promptly at 7:30 pm. Sponsored in part by a grant from the Maryland State Arts Council. Admission: \$6 for Members, \$8 for Non-members. St.

Mark's on the Hill is one-half mile inside the Baltimore Beltway, at Exit 20 South. **Info: 410.321.8419.**

August

- 6** *Beginners' Workshop* by **Susan Rudy**. Caller: **Rich Galloway**. Music by **Robbin Schaffer** (piano), **Susan Rudy** (guitar), and **Becky Ross** (violin)
- 13** Caller: **Diane Schmit**. Music by **Liz Donaldson** (piano), **David Knight** (violin), **Dawn Culbertson** (recorders).
- 20** Caller: **Carl Friedman**. Music by **Michael Friedman** (piano), **Marty Taylor** (flute, concertina), and **Ellen Schwindt** (violin).
- 27** Caller: **Rich Galloway**. Music by **Marty Taylor** (flute, concertina) and **Liz Donaldson** (piano).

Tuesdays

English Country Dance (CDSS) • Herndon, VA *Tuesday, August 14 and August 28 • 7:45 pm*

At Harding Hall, 730 Jackson St, Herndon, VA. Come enjoy your favorite English Country Dances to live music. Fee is \$3. Leader: **Barbara Harding**. **Barbara Heitz** (flute) will play for August 14 dance; **David Knight** (fiddle) for August 28 dance. **Info: Barbara at 703.437.3615.**

Saturdays

English Country Dance (CDSS) • Herndon, VA *Saturday, August 18 • 8 pm*

At Harding Hall, 730 Jackson St, Herndon, VA. Caller: **Barbara Harding** with recorded music. No experience or partner necessary. Free. **Info: Barbara at 703.437.3615.**

• • • *International* • • •

Alpine

Swiss Embassy • Washington, DC *Wednesdays, August 8 and 22 • 7:30 - 10 pm*

Swiss folk dancing to recorded music on the wooden floor at the Swiss Embassy, 2900 Cathedral Avenue NW, DC. Sponsored by the Swiss Folklore Group, admission is free. Beginners are welcome. **Info: Fran Walters 301.530.5643.**

Ceili (Irish)

Ceili Dance • Fairfax, VA *Saturday, August 11 • 8 - midnight*

Comhaltas Ceoltoiri Eireann (CCE) sponsors a monthly (2nd Sat.) Ceili Dance at the John Wood Center, 3730 Old Lee Hwy., Fairfax, VA. Lesson at 7:30 pm. Free tea, coffee, sodabread. Admission: \$10 (Family \$20). **Info: Gene Nazarovitz 703.444.9368.**



Dances continued**International
Mondays****Bethesda International Folk Dancing • Bethesda, MD
Mondays • 7:30 - 10 pm**

Dance on the wood floor of the Leland Community Recreation Center social hall, 4301 Willow Lane, Bethesda, MD. No partner necessary. 7:30 pm Beginners teaching, 8 pm intermediate/advanced and requests. Mostly recorded but occasionally live music and workshops. Admission \$5. **Info: Phyllis or Brandon Diamond, 301.871.8788.**

Tuesdays**Arlington International Folk Dancing • Arlington, VA
Tuesdays • 8 - 10 pm**

At the Key School, Key Blvd. at Veitch St. near the Courthouse Road Metro, Arlington, VA \$3. Recorded music. Instruction, walk-throughs, and requests. Singles welcome and all ages or levels of expertise. **Info: 703.527.8998 or or sstulberg@earthlink.net .**

Wednesdays**Columbia International Folk Dancing • Columbia, MD
Wednesdays • 8 - 10:30 pm**

Kahler Hall, Beaverkill Rd. & Harper's Farm Rd., Columbia, MD. Admission \$3. Recorded music. Beginners welcome. Teaching until 9 pm. We have parties and workshops. **Info: 410.997.1613 (night), or 301.495.4642 (day).**

Thursdays**Chevy Chase International Folk Dancers • Washington, DC
Thursdays • 7:30 - 9:30 pm**

Chevy Chase Community Center, 5601 Connecticut Ave, NW, Washington DC (Connecticut Ave. at McKinley St., 2 blocks south of Chevy Chase Circle). Instruction and walk-throughs until 8:30. All levels welcome. No partner necessary. Recorded music. Leader Roland Forbes. **Info: Jackie Davis 301.424.8827 or Naomi Rogers 301.438.0063.**

**Mount Vernon International Folk Dancing • Alexandria, VA
Thursdays • 8 - 10 pm**

Mount Vernon Unitarian Church meeting hall, 1909 Windmill Lane, Alexandria, VA. Instruction, walk-throughs, requests. No experience or partner needed. Admission \$2.50. Recorded music. **Info: 703.780.2393 or kkkrogh@aol.com.**

Fridays**Greenbelt International Folk Dancing • Greenbelt, MD
Fridays • 8:30 - 11 pm**

Focusing on dances from Eastern and Western Europe, Scandinavia, and the Mediterranean. No partner or experience necessary. Teaching from 8:30 -

9:15 pm, request dancing 9:15-11 pm. Mostly recorded music. Greenbelt Community Center Dance Studio (beautiful wooden floor!), 15 Crescent Rd., Greenbelt, MD. Admission \$5. **Info: Larry Weiner 301.565.0539 or weiner@erols.com; John Robinson 410.715.9210; and John Bartholomew 301.565.3650.**

Israeli**Israeli Folk Dancing • DC
Wednesdays • 7:30 - 10:30 pm**

Adas Israel Congregation, 2850 Quebec St., NW , Washington, DC. 7:30 beginners teaching, 8:30 advanced/open dancing. Recorded music. Admission \$5/\$2 students. **Info: Helen Rubin, 703.207.1551 or helen@israelidance.com.**

**Israeli Dancing • Potomac, MD
Wednesdays • 8 to 11 pm**

At the Har Shalom Congregation, 11510 Falls Rd., Potomac, MD. Instruction 8-9:15. Oldies on first and third Wednesdays, newer dances second and fourth. Recorded music. \$4. **Info Ben Hole, 301.441.8213.**

• • • Morris • • •**Bluemont Morris • Reston, VA
Mondays • 7 - 8:30 pm**

A group of men and women who do traditional Morris dances in the spring and fall. The group is fun and the dancing is addictive and great exercise. Practice in Reston, VA. If you would like to join, call **Laura 703.845.8536.**

**Foggy Bottom Morris Men • Silver Spring, MD
Thursdays • 8 - 10 pm**

Join the *Foggy Bottom Morris Men* and learn traditional dances from the English villages of Badby, Bampton, and the Welsh-English border regions. Seasonal traditions of mumming and long-sword dances. No previous morris experience is necessary to learn, but it is a vigorous dance and some physical conditioning is recommended. We welcome new musicians to augment our concertina, button accordion and fiddle players at practice. Oak View School, 400 E. Wayne Ave, Silver Spring, MD. **Info: Brad Graham 410.480.3289 graham@segmail.com, Bill Brown 301.270.2014 wmlbrown@earthlink.net, or Jud McIntire 703.528.0588.**

• • • Western Square • • •**Taylor Made Squares • Silver Spring, MD
Tuesdays • 8 - 9:30**

Betsy Taylor calls squares to recorded music at the Long Branch Community Center, Piney Branch Rd., Silver Spring, MD. Wood floor. Free admission. No experience or partner necessary. **Info: 301.589.4868.**

Dances continued

• • • **Swing** • • •

Spanish Ballroom • Glen Echo, MD
Saturday, August 4 • 9 - midnight

Washington Swing Dance Committee, in cooperation with the National Park Service, presents The Hula Monsters. Introductory swing lesson 8 - 9 pm, then dance until midnight. Admission \$10. No partner or experience necessary. All ages welcome. Smoke- and alcohol-free venue. Volunteer for one hour and get in free. **Info: 202-726-3972 or www.wsdc.org.**



• • • **Waltz** • • •

Sunday Afternoon Waltz • Glen Echo, MD

Spanish Ballroom, Glen Echo Park (Directions, page 12). Half-hour introductory waltz workshop by **Donna Barker** at 3 pm, social dancing to live music 3:30 - 6 pm. Everyone is welcome to attend. Admission: \$5, which includes the lesson. **Info: Donna Barker 703.978.0375 or swing4me@erols.com.**

August

- 5 **Waltzing Stars** with **Liz Donaldson, Alexander Mitchell, Marty Taylor, and Ralph Gordon**
- 19 **Gigmeisters** with **Alexander Mitchell, Paul Oorts, Dave Wiesler, and Ralph Gordon**

C L A S S I F I E D S

EDITORIAL POLICY FOR CLASSIFIED ADS: Only FSGW members may place an ad. Ads may be up to 50 words, including telephone number with area code. There is a limit of two ads per member per issue. Ads MUST be relevant to FSGW's stated purpose (see Editorial Policy). Charges: Commercial business: \$8 for 10 words; Non-commercial and individual \$4 for 10 words; 25% discount for any single ad placed in 11 consecutive issues (one year) and paid in advance. LOST & FOUND ads are FREE. Ad copy with check made payable to FSGW must be

received by the newsletter deadline. Mail to the Editor: **April Grastorf, 5001 Chanticleer Ave., Annandale, VA 22003.**

DANCING PLANET will arrange music/dance instruction/caller for your event. High quality sound reinforcement services. Reasonable rates. Loads of experience. Many happy clients. **Jamie & Betsy Platt 301.320.7099 or DANCINGPLANET@EROLS.COM**

CD Booklets, labels, J-Cards Design — Also books, magazines, brochures Designing YOUR ideas! — **Jennifer Woods GRAPHICS 301.587.7174**

FSGW Board 2001-2002

Dennis Cook, president	president@fsgw.org	301.776.4314
Carl Mintz, past president	pastpresident@fsgw.org	202.543.4999
Sousan Frankeberger, veep	vicepresident@fsgw.org	703.324.8566
Nancy-Jean Seigel, secretary	secretary@fsgw.org	301.320.0072
Jim Cole, treasurer	treasurer@fsgw.org	703.356.9678
Chuck Moran, membership,	members@fsgw.org	703.892.4154
Kathy Westra, program	program@fsgw.org	301.587.3807
Charlie Baum, special events	special@fsgw.org	301.587.2286
Anne Sergeant, dance	dance@fsgw.org	301.270.4553
Liz Milner, publicity	publicity@fsgw.org	703.658.0957
April Grastorf, publications	newsletter@fsgw.org	703.978-7257
Lisa Harmon, at large	board1@fsgw.org	301.592.0432
Sean Doherty, at large	board2@fsgw.org	703.548.3095

FSGW Board Meeting
Monday, August 6 • 8 pm

The monthly FSGW Board Meeting will be held at the Glen Echo Park Ranger Station. All FSGW members may attend. If you wish the Board to consider a particular matter, please contact the appropriate board member or **Dennis Cook, FSGW President, at 301.776.4314.**

FSGW Newsletter Editorial Policy

The Folklore Society of Greater Washington endeavors to print copy it deems relevant to its membership and purpose as stated in its by-laws;

"The main purpose of the Society is to further the understanding, investigation, appreciation, and performance of the traditional folk music and folklore of the American people."

- All copy (except classified ads) must be submitted by e-mail to newsletter@fsgw.org in text format in the body of the e-mail by the 10th of the preceding month.
- Please review comparable entries from the Newsletter and edit accordingly.
- The Editor reserves the right to edit or omit copy as necessary.

Editor: April Grastorf • newsletter@fsgw.org • 703.978.7257
Design & Layout: Jennifer Woods GRAPHICS Silver Spring, MD • 301.587.7174



The
Folklore Society
of Greater Washington

412 South Edgewood St. ❖ Arlington, VA 22204-2043

www.fsgw.org

Printed on recycled paper.

PRESORTED
FIRST CLASS MAIL
US POSTAGE PAID
ROCKVILLE, MD
PERMIT #4297

Address Service Requested.



FIRST CLASS



203801
Carly Gewirz
PO Box 217
Clifton VA 20124-0217

The Folklore Society of Greater Washington is a not-for-profit [Section 501(C)(3) of the IRS code] institution and we encourage the financial contributions of our members. Contributions in excess of annual dues are welcome and may be tax deductible. Please mail your gift to FSGW, 412 South Edgewood, Arlington, VA 22204-2043. Subscriptions to the Newsletter only are available outside the Greater Washington Metro area.

FSGW is dedicated to preserving and promoting traditional folk arts in the Washington, DC metropolitan area. Membership is open to all who support these goals, upon payment of annual dues.

FSGW Membership Form

Renewal New Address New Membership

	<i>Individual</i>	<i>Family</i>
1 year	<input type="checkbox"/> \$24	<input type="checkbox"/> \$33
2 years	<input type="checkbox"/> \$44	<input type="checkbox"/> \$63
3 years	<input type="checkbox"/> \$64	<input type="checkbox"/> \$93
LIFE	<input type="checkbox"/> \$400	<input type="checkbox"/> \$600

Newsletter Subscription ONLY \$16
Available *ONLY* to those living *OUTSIDE* the Greater Washington metro area. Newsletter Subscription *ONLY* carries *NO* membership privileges.

Name(s) _____

Address _____

City _____ State _____ Zip _____

Phone(s) _____

H: (____) _____ W: (____) _____

E-mail: _____

May we list you in our Membership Directory? (FSGW does not provide mailing lists to any other organizations.)

Yes No Yes, but please do not list my:
 address home phone number work phone e-mail

I would like to help FSGW. Comments/Suggestions: _____



Send form and check made payable to FSGW to:
FSGW Membership ❖ 412 South Edgewood, Arlington, VA 22204-2043

FSGW 7/01