

# The Folklore Society

## of Greater Washington ♦ NEWSLETTER

Vol. 38 No. 5

♦ [www.fsgw.org](http://www.fsgw.org) ♦

January 2002

**FSGW Special Event**

**Glen Echo, MD**

# Bryan Bowers

## *Autoharp Mastery*

**Thursday, January 31 • 8 pm**

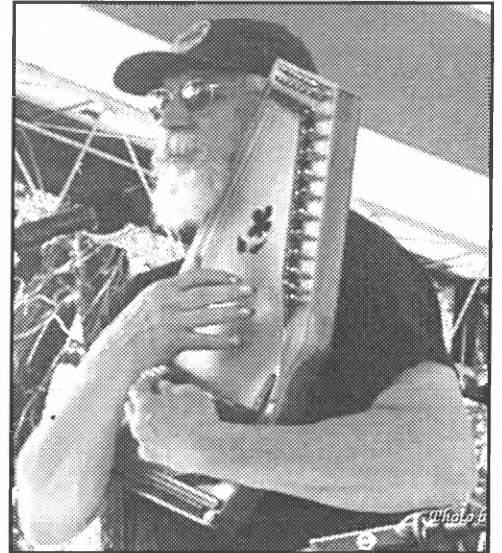
**Bryan Bowers** is the master of the autoharp. An amateur may look at the autoharp (once described as a “zither with an automatic transmission”) and think of it as a simple chording device, but in Bryan Bowers’ capable hands, the instrument rings with complex counterpoint and an expansive range of tonal variations and expression. Bryan is also a fine showman — a clever, dynamic solo artist who pulls his audiences into his performances. His friendly voice and charismatic personality will lead us, but be prepared to sing along on the choruses. Bryan’s encyclopedic repertoire embraces traditional melodies, gospel songs, hymns, and contemporary songs by the best troubadours of the day (including some by himself).

Bryan is a native of southern Virginia. As a child, he tagged along with the fieldworkers and gandy dancers and learned their call-and-response worksongs. Bryan recalls, “The music I heard while working in the fields was mesmerizing. And I’d see the gandy dancers coming down the tracks, setting the rails and getting their ties straight. You’ve heard that song *Whup Boys, Can’t You Line ‘Em?, Chack A Lack?* ‘Whup, boys, can’t you line ‘em?’ was the call the leader would sing. ‘Chack a lack’ was the bounce-back of the hammer after falling on the pin. I just thought that music was something that everyone did. It was years later that I realized what I’d been raised around.” The call-and-response work song is one of Bryan’s favorite ways to encourage an audience to sing.

Bryan’s development of a novel way to play the humble autoharp caught the attention of every other player of that instrument, and he launched a generation of new players. Part of it is tuning: some strings are tuned in unison to others, to create a richer and more resonant chord sound. But more of it is his creative fire: the desire to get more music out of his instrument.

At Bryan’s request, this performance is set in an intimate hall, unamplified, with no sound system to intrude between the performer and audience. **Glen Echo Town Hall, 6106 Harvard Avenue** (Directions, page 14). **Admission: \$10 for Members, \$14 for Non-members.**

*Glen Echo is an active and thriving community which enjoys and supports the traditional arts. The Folklore Society of Greater Washington appreciates their cooperation and support in making traditional music available in the area. As a thank-you for the use of the hall, Glen Echo residents will be admitted free to the Bryan Bowers concert.*



### Inside:

#### FSGW:

Advance Notices .....	13
Board Members/Meeting .....	23
Chesapeake Dance Weekend .....	2
Community Dance .....	2
Editorial Policy .....	22
English Country Dances .....	4
International Dance .....	4
Mini-Fest .....	5
Monthly FREE Program .....	3
Sings .....	6
Storytellers .....	6
Sunday Night Dances .....	2

#### Features:

Calendar .....	12-13
Classifieds .....	23
Concerts & Concert Series .....	7
Dances .....	15
Dance Classes .....	20
Directions to Venues .....	13
Jams/Open Mics/Audience Participation ..	9
Local Folkal .....	11
Workshops, Weekends, Festivals .....	10

**FSGW Sunday Night Dance****Glen Echo, MD****FSGW Sunday Night Contra Dance****Sundays • 7:30 to 10:30 pm**

Spanish Ballroom at Glen Echo Park (Directions, page 14). Live music by excellent bands, entertaining callers. Experienced and new dancers are welcome, and no partner is needed. Called dances are mostly contras, with occasional squares. New dancers should come early, as dances become more challenging later in the evening. Admission \$6 for FSGW, BFMS, DCSS, and ATDS Members; \$8 for Non-Members. The Ballroom is not heated. Dancers should dress appropriately and bring water. Info: Anne Sergeant at [dance@fsgw.org](mailto:dance@fsgw.org) or check the webpage at [www.fsgw.org](http://www.fsgw.org).

**January**

- 6 **Ann Fallon** calls to music by **Some Assembly: Paul Miller** (guitar and bodhran), **Donna Boylan** (keyboard and recorder), **Mary Corletta Flora** (flute and recorder), and **Joe Klausner** (fiddle and mandolin).
- 13 **PHD: DeLaura Padovan** calls to music by **Steve Hickman** (fiddle) and **John Devine** (guitar).
- 20 **Gaye Fifer** comes up from Charlottesville to call, with music by **Laurie Fisher** (fiddle and percussion), **Dave Wiesler** (piano and guitar), and (maybe) **Dan Sebring** (guitar, mandolin, and fiddle).
- 27 **Ted Hodapp**, a high-energy caller from Minnesota, will call to music by **Waverly Station: David Knight** (fiddle), **Liz Donaldson** (piano and possibly accordion), and **Ralph Gordon** (bass).

## The Twentieth Annual Chesapeake Dance Weekend

### Friday - Sunday, April 12-14, 2002.



Don't forget to send in your application for the **20TH ANNUAL FSGW CHESAPEAKE DANCE WEEKEND** at Camp Letts. Applications postmarked by *December 31st* will be in the lottery for first admission. **Lisa Greenleaf** will call to music of **Double Date**, featuring **Becky Tracy** and **Keith Murphy** (of *Nightingale* and *Wild Asparagus*) and **Ann Percival** and **David Cantieni** (of *Wild Asparagus*). The **Critton Hollow String Band** will provide the music for square and contra caller **Kathy Anderson**. Virtuoso of international fiddle styles **Andrea Hoag** and acclaimed New England pianist **Jacqueline Schwab** will play for waltzes and other couple dances taught by local favorite **John Batholomew**. Look for flyers at your local dance or at [www.fsgw.org](http://www.fsgw.org) or call **202.332.7949**.

**FSGW Community Dance****Sunday, January 13 • 3:30 to 5 pm**

Start the New Year off with a wonderful concert and dance. This month we feature **Steve Hickman** in concert. Steve not only plays every style of fiddle music but also plays his body - better known as the *Hambone!* Watching and listening to this master musician is a special treat - one that is guaranteed to bring a smile to your face. After the concert, we will push back the chairs and dance to the calls of **De Laura Padovan**.

**Steve Hickman** and **John Devine** will provide the music. So bring a friend, a neighbor, or grandparent to the Glen Echo Town Hall (Directions, page 14). Admission is \$5 for kids and adults. Bring a snack to share at the break. Questions, call **Tali** or **Bob Mathis**, 301.589.7539 or [talibob@starpower.net](mailto:talibob@starpower.net)





**FSGW FREE Monthly Program****Washington, DC**

*Scottish Singer*

# NORMAN KENNEDY

*Traditional Songs and Ballads in  
Gaelic and English*

**Saturday, January 19th • 8 PM**

On **Saturday, January 19**, FSGW's monthly program (FREE to FSGW members) will feature a great treasure of traditional music: Scotsman **Norman Kennedy**, a native of Aberdeenshire in north-east Scotland and one of the finest singers of traditional Scots ballads and songs alive today.

Now living in Calais, Vermont, Norman first performed for the Folklore Society on December 8, 1967, just two years after arriving in the U.S., and just before he became the master weaver at Colonial Williamsburg. Norman comes from a part of Scotland famous for its singers — and its folksong collectors. This northeast corner of Scotland was home to the great Scots ballad singer Jeannie Robertson, to Peter Buchan (a source singer for ballad collector Francis James Child), and to folksong collector Gavin Grieg.

Norman's background can best be described in his own words, written on November 8, 1967, to describe his first FSGW program: "I was born in 1933 in Aberdeen. My folk have lived in and around Aberdeen for generations, so that is where we belong. Some of my mother's people were singers, and could play instruments like the concertina, accordion, fiddle, melodeon, etc., and as there were always older people — grandparents and aunts — in the house, they sang to us a lot.

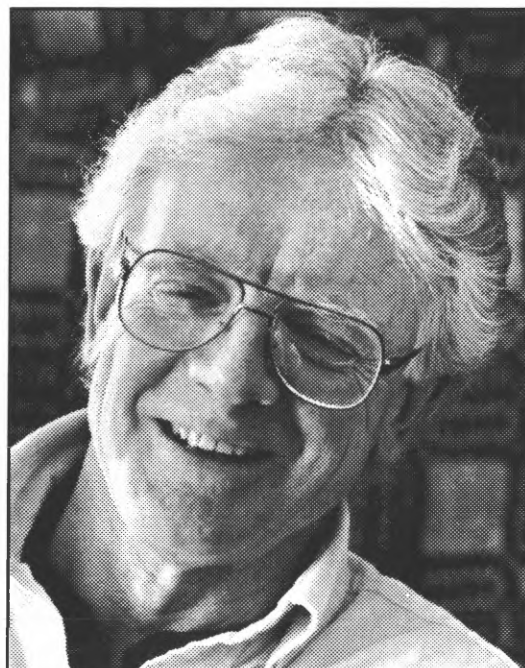
"By the time I was about twelve I was learning songs from singers like Davie Stewart, the tinker singer, as we lived across the street from him at one time and also very close to Jeannie Robertson's mother, Maria. The tinkers used to sing in the streets and the marketplace and I would stand and listen till I got the song right. When I was seventeen I went to the Isle of Barra in the Outer Hebrides and was in the heart of the Scottish Gaelic way of living there. I went there every summer for ten years and was well acquainted with the old singers and storytellers there. These were people who had 500 to 600 songs in their heads, for most of them couldn't read Gaelic as that was not encouraged by the schools when they were young.

"In 1965 I was asked to come across to Newport to represent Scotland [at the Newport Folk Festival] and as none of the old people I knew wanted to make the journey for fear of flying, I just came anyway."

Of his years visiting the island of Barra, Norman says: "There, I was up to my eyes in the strongest and best of Gaelic songs, stories, and with the very kind help of some of the older people, I picked up a good bit of Gaelic and a good few of the songs as the old people sang them. That's how I liked the songs, and that's how I learned them."

Don't miss this rare opportunity to hear one of the best of traditional singers and storytellers. The concert begins at **8:00 p.m. on Saturday, January 19**, at the **Washington Ethical Society auditorium**, 7750 16th Street NW, DC (Directions, page 14). **Admission is FREE for FSGW members, and \$15 for Non-members.**

In addition to the program described above, **Norman Kennedy** will lead two special afternoon workshops: **Great Scots Ballads** on January 19 and **Waulking the Cloth** on January 20. See page 6 for more information.





## FSGW English Country Dances

### Wednesdays • 8 to 10:30 pm

Dance on a wood floor in the climate-controlled community room at the Glen Echo Town Hall (Directions, page 14). Enjoy the talented callers, accompanied by topnotch musicians playing melodies that are unique to each dance, featuring a delightful mix of instruments, which on a given evening might include piano, fiddle, flute, harp, oboe, concertina, bassoon, or viola. Enjoy the welcoming crowd, light refreshments, and dancing from 8 to 10:30 pm. Experienced and new dancers are welcome, and no partner is needed. **Admission \$6 for FSGW members, \$8 for Non-members. FREE LESSON: Basics of English Country**

**Dance, 2nd Wednesdays at 7:30 pm. Info: Norm Bernhardt at**

**301.320.2469; Rich Galloway at 301.589.0939, or Roger Broseus at English@fsgw.org.**

#### January

- 1 **Stephanie Smith** calls to the music of **Colleen Reed** (flute), **Bruce Edwards** (bassoon), and **Francine Krasowska** (piano).
- 9 Lesson at 7:30 sharp. **Barbara Harding** calls to the music of **David Knight** (fiddle), **Barbara Heitz** (flute), and **Liz Donaldson** (piano).
- 16 **Rich Galloway** calls to music by **Becky Ross** (fiddle), **Laurie Mielke** (recorder), and **Liz Donaldson** (piano).
- 23 **Bob Farrall** calls to the music of **Judy Kleppel** (oboe), **Paul Oorts** (mandolin), and **Julie Gorka** (piano).
- 30 **Diane Schmit** calls to the music of **Jeff Steinberg** (fiddle), **Karin Loya** (cello), and **Liz Donaldson** (piano).

**FSGW is looking for the ultimate volunteer, someone willing and qualified to act as Coordinator of Volunteers. If interested, contact **Dennis Cook, President (301.776.4314)** or **Nancy-Jean Seigel, Secretary (301.320.0072)**.**

## Foggy Bottom Folkdancers

### Thursdays • 7:30 to 10:45 pm

**FOGGY BOTTOM FOLKDANCERS ARE MOVING.** After 18 years at St. Mary's Church, the Foggy Bottom Folkdancers are looking for a new home. The class may have moved by the time you read this, so call **Jamie Platt** at **301.320.7099** or email **dancingplanet@erols.com** for any updates. Also, if you know of a nice place that has a good dance floor, a convenient location, and reasonable rent, please call Jamie.

Beginner/intermediate classes 7:30-9 pm. Request dancing 9-10:45 pm. No experience or partner needed. Mostly taped music. Occasional parties and workshops. Co-sponsored by FSGW. **Admission \$4.**



# 30th Annual Mini-Fest

## The Tradition Continues

### Saturday, February 2, 2002

**FSGW** will present approximately 100 performers from a diverse range of international traditions in its **30th Annual Mini-Fest** on **Saturday, February 2, 2002**. The Mini-Fest will feature a variety of family entertainment from **noon to 6 pm** at the **Takoma Park Middle School, 7611 Piney Branch Road, Takoma Park**. The evening dance and concert will run from 7:30 to 10:30.

Founded 30 years ago by Folklore Society member **Debbie Hutton**, the Mini-Fest began as a day-long winter retreat for musicians and dancers. Workshops and dances were organized to give society members a chance to get together to play, sing, dance, and socialize while traveling only a few blocks from home.

As in years past, the goal of this year's festival is to provide a program that includes well-known traditional folk artists from the Washington metro area as well as new performers who are carrying on the tradition in exciting new ways. Traditional folkies will enjoy a series devoted to ballads of the British Isles, covering such diverse topics as *Ballads of Family Life* and *Sea Songs of Rest and Leisure*. Folks interested in carrying on the tradition in new ways will enjoy four sessions presenting about 20 of the area's top singer-songwriters. And don't forget to bring along your dancing shoes! From noon to 6:00 there will be two dance tracks going on in the school's main and auxiliary gyms.

This year's Mini-Fest will celebrate the area's rich and diverse folk traditions by once again providing dances, performances, instrumental and vocal workshops, children's entertainment, and a variety of craftspeople. Please check the FSGW website for a list of day-time performances; the website will be updated as slots are finalized. Catering will be provided from noon to 6 by Takoma Park's own *Caribbean Cafe*.

The evening program and dance will include performances everyone will enjoy. One of these will feature **Bruce Hutton** and several surprise guests. The evening dance will be accompanied by the infectious rhythm of **Zydeco Crayze** and the ever popular **Oklahoma Twisters**. Don't miss them!



**Bruce Hutton**

**VOLUNTEERS ARE STILL NEEDED FOR A VARIETY OF TASKS.** To sign up, visit the FSGW website or call **Lisa Harmon at 301 592 0432**. All volunteers get in free!

#### GETTING TO THE MINI-FEST

**FROM I-95 NORTH OF SILVER SPRING:** Take I-195 South to I-495 West to the New Hampshire South/Takoma Park Exit. Turn right at the end of the ramp and proceed south approximately 1-1/4 miles on New Hampshire Ave. (MD 650). Turn Right onto Piney Branch Road. The School will be on your left, approximately 2 miles down.

**FROM THE DISTRICT:** Take Georgia Avenue (Route 97) to Piney Branch Road. (13th Street becomes Piney Branch Road northeast of its intersection with Georgia Avenue). Travel 1.1 miles on Piney Branch Road NW until it becomes Piney Branch Road/MD 320. Travel 0.6 miles on Piney Branch Road/MD 320. The school will be on your right.

**FROM VIRGINIA:** Take Capital Beltway/I-495 North to the MD-97 South/Georgia Avenue exit (Exit 31B), towards Silver Spring. Take Georgia Ave/MD-97 for 1.8 miles. Turn left on Sligo Avenue and then turn right at the next light on Fenton Street. Turn left at the next light on MD-410/Philadelphia Ave. for 0.5 mile. Turn Left onto Piney Branch Rd., MD 320 (at least three lights from Fenton St.) for 0.2 mile. The school will be on your right at the next light.

**WALKING FROM THE TAKOMA METRO STOP:** Take the Metro Red Line to the Takoma Park Stop. When departing the Metro station, walk across the bus loop and parking lot so that the tracks are behind you and turn left onto Eastern Avenue. Walk across Holly Avenue (first intersection on right). Piney Branch is the next intersection that passes to the right. Turn right (northeast) onto Piney Branch. The school is on the right side, approximately 9/10 mile. (It's a hardy walk, most of which is uphill.)

## TWO Special Workshops with Norman Kennedy

### Great Scots Ballads • Laurel, MD

**Saturday, January 19 • 2 - 5 pm**

Scots singer and master weaver Norman Kennedy learned many classic Scots ballads from traditional singers. He will sing some of his unusual and rare Scots ballads, and will talk about the people from whom he learned them. A flyer and registration form was included in the December 2001 issue; some spaces are still available, but **pre-registration is ESSENTIAL**. Admission \$25, limited to 20 participants. **Info/reservations: Kathy Westra, 301.587.3807 prior to January 12.**



### Waulking the Cloth • Silver Spring, MD

**Sunday, January 20 • 2 - 4 pm**

Scots singer and master weaver Norman Kennedy will teach a waulking workshop (co-sponsored by the Potomac Craftsmen, Inc.). *Waulking* (fulling) newly woven woolen cloth has traditionally been done to the accompaniment of songs and ballads - the music makes the work go more smoothly. A flyer and registration form was included in the December 2001 issue; some spaces are still available, but **pre-registration is ESSENTIAL**. Admission \$15 for FSGW and Potomac Craftsmen members, \$20 for Non-members. **Info/reservations: Kathy Westra, 301.587.3807 prior to January 12.**

## Other FSGW Events

### FSGW Open Sing • Kensington, MD

**Friday, January 4 • 8:30 pm**

Come to the FSGW Open Sing on the first Friday of each month. We take turns doing music that's connected (however vaguely) to a given topic. Sing, play, request a song, or just listen. People new to the Sing may present any song regardless of topic. Donations of refreshments are welcome, and singing usually lasts until around 11:45 pm. The January Sing will be held at the home of **Nancy King in Kensington, MD**. This month's topic is "Pictures, Statues, and Other Likenesses." Dig around in your repertoire and see how many images you can come up with. **Info/Directions: 301.933.3073 or nlking@bellatlantic.net.**

### FSGW Gospel Sing • Bethesda, MD

**Sunday, January 13 • 4 - 8 pm**

Gospel sings are held every second Sunday at various homes, from 4 pm to 8 pm, with a break for a covered dish supper at 6 pm. Everyone is welcome! The January Gospel Sing will be at the home of **Eric Nothman in Bethesda, MD**, just a mile from the Beltway and River Road. **Info/directions: 301.469.0173.**



### FSGW Sacred Harp Singing • Arlington, VA

**Tuesday, January 1 & Sunday, January 27 • 3:30**

St. Peter's Episcopal Church, 4250 North Glebe Road, Arlington, VA. FSGW sponsors monthly singings of early American hymns, anthems, and fugues in four-part harmony on the fourth Sunday of the month (except December) and New Year's Day. (**Tuesday, New Year's Day, at Rock Spring Congregational Church in Arlington, VA**) The principal sourcebook is *The Sacred Harp* (1991 edition), but *Christian Harmony* (Deason-Parris revision), *Northern Harmony*, and *An American Christmas Harp* are also used. Original shape-note compositions by local singers are also sometimes sung. We sing from 3:30 to 6:30, then share a potluck supper. All are welcome to come and sing or simply listen. Loaner tunebooks are available. Admission is free. **Directions:** St. Peter's is one-half mile south of Chain Bridge, on the west side of Glebe Road. The church is not visible from Glebe Rd. Turn on Tazewell St. to reach the parking lot. **Info: 301.229.8534.**

### Storyswap • Falls Church, VA

**Saturday, January 12 • 7:30 pm**

Share an evening of stories and potluck snacks at the home of **Ralph and Margaret Chatham in Falls Church**. Free, open to tellers and listeners. **Info/directions/rsvp: 703.698.5456.**



# Concerts & Concert Series

## Where? House Concert • Silver Spring, MD Sunday, January 13 • 7:30 pm

Seamus Kennedy, traditional ballads and hilarious parodies. Door at 7. \$10. Info: 301.588.5314 or jkkaplan@erols.com.

## House Concert • North Potomac, MD Friday, January 18 • 8 pm

Singer-songwriter Kate McDonnell plays guitar upside down and backwards. Contemporary folk music. \$10. Info: 301.762.3718 or DawsonConcerts@aol.com.

## Politics, Protest, and Presidents • Washington, DC Tuesday, January 22 • noon - 1:15 pm

Labor activist and balladeer Joe Glazer explores the political passions of presidential campaign songs. Audience Q&A opportunity. First floor Reception Room, Smithsonian National Museum of American History, 12th and Constitution. Info: 202.357.2833 or cloughc@nmah.si.edu.

## FolkNite • Wheaton, MD Saturday, January 26 • 9 pm

The bimonthly FolkNite at the Royal Mile, 2407 Price Avenue, Wheaton, MD. This month featuring local favorite Joe Hickerson, (see December issue, p.21) Chance and Susette Shiver open. Chance and Matt Shiver and Bennett Goldstein follow with acoustic blues, country, and rockabilly. Info: 301.946.4511.

## House Concert • McLean, VA Saturday, January 26 • 7:30 pm

Chase the winter blues with the Blue Moon Cowgirls (Karen Collins, Ann Porcella, Dana Ward and Ira Gitlin). Hosts Martha and Harry Estroff. \$10 donation. Reservations recommended. Info: Dana at 703.379.2423 or bensonward@aol.com; or Karen at 301.270.2586 or kcollins@starpower.net.

## Tamburitizans Concerts • Two venues Saturday and Sunday, January 26-27

A colorful music and dance tour of Eastern Europe and its cultures. Guitar-like tamburica, violin, accordion, drums, flutes, bagpipes and voices all contribute to the musical fantasy. Pre-concert dance party featuring the Bulgarian folk band Liudi Chushki.

Saturday, January 26 at 7:30 pm, Bishop Ireton High School, 201 Cambridge Road, Alexandria, VA; and Sunday, January 27 at 2 pm, Montgomery College Performing Arts Center, 51 Mannakee Street in Rockville, MD. Info/Directions: 301.929.3330 or jdudas@earthlink.net.

## CONCERT SERIES

### Sundays:

### Sundays in the House • Takoma Park, MD Sundays • 1 - 3 pm

The House of Musical Traditions presents free in-store concerts at the House of Musical Traditions, 7040 Carroll Avenue, Takoma Park, MD 20912. Info: 301.270.9090.

### January

- 6 Eliot Bronson. Intricate guitar playing and thought-provoking lyrics.
- 13 Pam Steinfeld. Upbeat, rhythmic tunes and soulful ballads (keyboard and guitar).
- 20 David A. Alberding. Dynamic guitar blending folk, rock, jazz and blues.
- 27 Joanne Juskus. Piano player with haunting vocals.

### Shenandoah Coffeehouse Series • Reston, VA Third Sundays • 7 - 9:30 pm

Outstanding folk and acoustic music at the Reston Community Center at Lake Anne. \$10 Info: [www.shenandoahacoustics.com/scs](http://www.shenandoahacoustics.com/scs).

### January

- 20 Jerry Bresee, swing- and blues-influenced songwriter and Patti Casey, New England-flavored bluegrass.

### Old Brogue Irish Pub • Great Falls, VA Sundays at 5, 7, and 9 pm

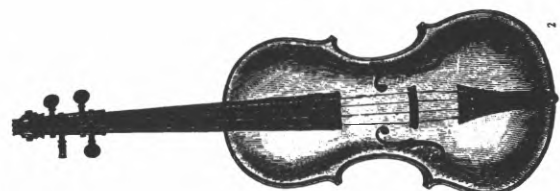
The annual Winter Celtic Concert Series at the Old Brogue Irish Pub returns for its 13th season, Sunday nights January 27 through March 10. Two seatings (5-6:30 and 7-8:30) will be expanded to include a third (9-9:45) if the first two sell out.

Series Ticket \$60, or \$12 for a single event. Snuggery (smoke-free) of The Old Brogue Irish Pub, corner of Georgetown Pike (Rte 193) and Walker Road in Great Falls, VA. Reservations required. Info/directions: 703.759.3309 or [www.ionamusic.com/brogue.htm](http://www.ionamusic.com/brogue.htm)

### January

- 27 Elke Baker & Friends - Scottish fiddling, and a few dance steps, too.

Continued on page 8





**Concerts & Concert Series, continued****Mondays****Institute of Musical Traditions (IMT) Series • MD*****Mondays • 8 pm***

IMT sponsors a variety of events at several different locations. **Tickets/Info/Open mic sign-up:** 301.754.3611 or [imtfolk@erols.com](mailto:imtfolk@erols.com), or [www.imtfolk.org](http://www.imtfolk.org)

**January**

- 7 **Open Mic**, Half Moon BBQ, 8235 Georgia Ave., Silver Spring, MD
- 14 **Tanglefoot**, at Paint Branch Unitarian, 3215 Powder Mill Road, Silver Spring, MD
- 21 **Bob Zentz & Pyrates Royale** at Paint Branch Unitarian, 3215 Powder Mill Road, Silver Spring, MD
- 28 **Magpie** at Silver Spring Unitarian, 10309 New Hampshire Avenue, Silver Spring, MD

**Wednesdays****Vic's Music Corner • Rockville, MD*****2nd and 4th Wednesdays • 8 pm***

Vic's is dedicated to introducing acoustic singer/songwriters from across the country to the greater Washington area. At O'Brien's, 387 E. Gude Drive, Rockville, MD. Smoke-free. Tickets: \$12 **Info/tickets:** 301.984.1897 or [rebaheyman@compuserve.com](mailto:rebaheyman@compuserve.com) or <http://www.victorheyman.com>.

**January**

- 9 **Steve Gillette and Cindy Mangsen**
- 23 **Groovelily** with Stephanie Corby opening

**Baldwin's Station • Sykesville, MD*****Wednesdays • 8 pm***

7618 Main St., Sykesville, MD 21784. Productions by Uptown Concerts, a non-profit organization affiliated with the North American Folk Alliance. **Info:** [joycesica@aol.com](mailto:joycesica@aol.com) or Joyce R. Sica, 410.922.5210. **Tickets/reservations:** 410.795.1041.

**January**

- 9 **Good Deale Bluegrass Band**
- 16 **Sarah Lee Guthrie & Johnny Irion**
- 23 **The Kennedys**
- 30 **Iona**

**Fridays****The Cellar Stage at St. John's • Baltimore, MD*****Fridays at 8 pm***

Co-sponsored by Uptown Concerts and St. John's of Hamilton, at the United Methodist Church, 5315 Harford Road, Baltimore, Maryland 21214. Access the large parking lot from Gibbons Ave. **Info:** Joyce R. Sica, 410.922.5210 or 410.521.9099; [uptownconcerts@aol.com](mailto:uptownconcerts@aol.com) or <http://www.charm.net/~dirtylin/uptown.html>

**January**

- 11 **Bill Staines**

**Medium Rare Café • Oakton, VA*****Fridays at 8 pm***

Unitarian Universalist Congregation of Fairfax, 2709 Hunter Mill Road 0.9 miles north of Rte 123. Smoke-free. \$10 in advance, \$12 at the door. **Info:** 703.924.8992 or [fuzzy@mediumrarecafe.com](mailto:fuzzy@mediumrarecafe.com)

**January**

- 25 **David Roth with Stephanie Corby**

**Saturdays****The Bardhouse • Takoma Park, MD*****Saturday, January 26 • 6:30 pm***

The Bardhouse is a new concert and reading series intended to bring together poets, storytellers, singer-songwriters and others to celebrate the oral tradition. Shenandoan singer-songwriter/poet Andrew McKnight will inaugurate the series with his "mountain gumbo" of styles. Locations will vary, but will be Metro accessible.

Vegetarian potluck at 6:30 pm. Reservations required. Suggested donation \$10-20.

**Info/directions:**

301.270.0430, x1 or [theBardhouse@aol.com](mailto:theBardhouse@aol.com)

**MAKE A NOTE: March's Deadline is February 8th**

MARCH's newsletter will close  
**TWO DAYS EARLY — Friday, February 8th**  
 (since February's a short month, we'll need the extra two days)

# Jams/Open Mics/Audience Participation

## Listed by day of the week

### Sundays:

#### **CABOMA Jam • Arlington, VA** **Sundays, January 13 and 27**

Capitol Area Bluegrass and Old-Time Music Association (CABOMA) holds jams the 2nd and 4th Sundays of each month. Lyon Park Community Center, corner of N. Filmore and Pershing, Arlington, VA. **Info: Dave at 301.274.3441.**

#### **Irish Traditional Music Seisiun • Wheaton, MD** **Sunday, January 20 • 7 - 10 pm**

Irish traditional music seisiun with **Dennis Botzer** (fiddle, flute), third Sundays, Royal Mile Pub, 2407 Price Avenue, Wheaton, MD. Seisiun musicians welcome. **Info: Dennis at 301.422.6550.**

### Tuesdays:

#### **Folk Club of Herndon-Reston • Herndon, VA** **Tuesdays • 7:30 pm**

Tortilla Factory, 648 Elden Street, Herndon, VA. Open mic format. Each performer gets 12 minutes (including setup time). \$1 donation. 2nd Tuesday includes a 25-minute member showcase. Smoke-free environment. **Info: 703.435.2402.**

#### **Jammin' Java • Vienna, VA** **Tuesdays • 7:30 pm**

Located at 231 Maple Avenue East. Sign up at 7, show starts at 7:30. **Info: Steve Key at 202.244.7524 or stevekey@aol.com**

### Wednesdays:

#### **Bangkok Blues • Falls Church, VA** **Wednesday, December 2 and 16 • 8 - 10 pm**

Perform or just sit back and enjoy great music and Thai food in a relaxed, musician-friendly atmosphere. No cover. Bangkok Blues, 926 W. Broad Street, Falls Church, VA. Park behind restaurant and across the street. **Info: 703.534.0095 or urban.legends@press-room.com.**

#### **Laurel Jam Session • Laurel, MD** **Wednesday, January 9 and 23 • 7 - 10 pm**

Adults who enjoy acoustic music are invited to come and sing, play, or listen to folk, bluegrass, and other traditional music in an informal setting. Phelps Senior Center, 701 Montgomery Street, Laurel, MD. **Info: 301.776.6168 during business hours.**

### Fridays:

#### **Glen Echo Open Band • Glen Echo, MD** **Friday, January 11 • 8:30 - 11:30 pm**

The fabulous *Glen Echo Open Band* plays for the second Friday contra dance. All instruments and levels of

ability are welcome. **Info: Friday Night Dance Hotline, 202.216.2116 or <http://fnd.folkdancer.com>.**

#### **Songwriters Open Mic • Bethesda, MD** **Friday, January 4 • 7:30 pm**

Songwriters Association of Washington (SAW) monthly open mic, host **Steve Key**. Sign up starting at 7. Barnes and Noble, 4801 Bethesda Avenue, Bethesda, MD. Original, non-cover material only, please. SAW members may be able to sign up in advance. **Info: Steve Key at 202.244.7524, stevekey@aol.com, or [www.saw.org](http://www.saw.org).**

#### **Dupont Music Circle • Arlington, VA** **Friday, January 18 • 8 pm**

Since 1983 the informal Dupont Music Circle has met to sing and play English, Scottish, Welsh, Irish, Quebecois, American, and other traditional music just for fun. **Info: Liz at 703.658.0957.**

### Saturdays:

#### **DC Folk Guitar Workshop • Washington, DC** **Saturday, January 5 • 8 - 11 pm**

Only \$5, but no one turned away for lack of funds. The Potter's House, 1648 Columbia Road, NW (Adams-Morgan). 90 minutes of group instruction, followed by 90 minutes of private performance opportunities. Share your songs in a supportive environment. Bring your guitar, a capo, and a copy of *Rise Up Singing* (copies available for purchase). You'd like to teach a tune? We need you! Members' meeting and potluck starts at 7 pm. **Info: 202.232.2885.**

#### **Caffe Florian Coffeehouse • Camp Springs, MD** **Saturday, January 12 • 7:30 pm**

Open mike, second Saturdays, September through June; acoustic musicians, songwriters, storytellers, and poets. Sign up at 7:30 pm. Free. Davies Memorial Unitarian Church, 7400 Temple Hill Rd., Camp Springs, MD, 0.3 miles south of Allentown Road. **Info: Den Frumen at 301.856.2573.**

#### **Hammer Dulcimer Jam • McLean, VA** **Saturday, January 26 • 1:30 - 4:30 pm**

Hammer dulcimer players meet most months to swap tunes and play. Other acoustic instruments welcome. **Info: Ellie at 703.578.3106 or [eholsopple@aol.com](mailto:eholsopple@aol.com).**

#### **Archie Edwards Blues Jam • Washington, DC** **Saturdays • 1 pm**

The Archie Edwards Blues Heritage Foundation holds an acoustic blues jam almost every Saturday afternoon, starting about 1 pm. All skill levels welcome. 1007 Bunkerhill Road, NW, Washington, DC. **Info/confirmation: 202.5267539.**

# Workshops & Weekends

## BandAid Workshop • Bethesda, MD

**Saturday, January 5 • 10:30 am - 3 pm**

An ensemble playing workshop conducted by area pianist Liz Donaldson, concentrating on tunes from the English Dance repertoire. All instruments welcome. Drinks provided, bring a bag lunch (and a goodie to share if you like). \$20. Space is limited. **Info: Liz Donaldson 301.986.1291 or liz@us.net.**

## SoundCatcher: Play By Ear • Arlington, VA

**Sunday, January 6 • 2 - 4 pm**

Special Twelfth Night session. Learn to play medieval, Irish, and Old-Time tunes by ear with **Scott Reiss** and **Tina Chancey** of *Hesperus*. Playing by ear is a skill you can learn. Experience the joy of playing in the oral tradition. Tune arranging and a slow jam at the end of each session.

Any instrument welcome. \$25 per session. 3706 North 17th Street in Arlington. **Info: 703.525.7550 or scottreiss@cs.com.**

## World Folk Music Association 17th Annual Benefit Weekend • Alexandria, VA

**Friday and Saturday, January 18-19**

For the past 16 years the WFMA has sponsored a folk music concert. This year this annual event will feature a tribute to the late **Harry Chapin**, founder of World Hunger Year. Among those scheduled to perform at one or both concerts are **David Buskin**, *Modern Man*, *Schooner Fare*, *the Kennedys*, *Side by Side*, *the Paperboys*, *Weavermania*, **Joe Glazer**, **Berkley Hart**, **Joe D'Urso**, **Kitty Donohue** and **Bryan Bowers**.

The Birchmere is at 3701 Mount Vernon Avenue. **Info: 202.362.2225, or www.wfma.net.**

## Scandinavian Music Workshop • Greenbelt, MD

**Saturday, January 19 • 7:30 - 9:30 pm**

Join the Scandia DC *Spelmannstag*, open to all interested musicians (it meets every third Saturday from September to May) at the Greenbelt Community Center. Workshop session from 7:30 to 8:30, with a featured fiddler (**Andrea Hoag** in January). Play for the Scandia DC Dance from 9 to 9:30 pm. Learn to play Scandinavian music from the experts. Syllabus of repertoire tunes and tapes available to participants. Nominal fee of \$3 covers the room rental and dance entrance. **Info: 202.333.2826, Linda@scandiadc.org or www.scandiadc.org.**

## FSGW's Great Scots Ballads • Laurel, MD

**Saturday, January 19 • 2 - 5 pm**

See page 6

## FSGW Waulking the Cloth • Silver Spring, MD

**Sunday, January 20 • 2 - 4 pm**

See page 6

## Banjo Boot Camp • Arlington, VA

**January 25-27 •**

**Dwight Diller** will teach his West Virginia clawhammer style and distinctive rhythmic playing style. Register by January 7. Tuition \$150. **Info: Lew Stern 703.920.1875, 703.920.8511, Lstern4441@aol.com.**

## St. Columba's Scottish Dance Open Band

• **Greenbelt, MD**

**Tuesday, February 12 • 8 - 10:30 pm**

Fiddler **Elke Baker** and pianist **Liz Donaldson**, will be leading an Open Band to play at the upcoming St. Columba's Scottish Valentine Dance Party. If you are interested in playing for this event, please **contact Liz Donaldson 301.986.1291 or liz@us.net** so she can provide you with the music arrangements in advance.

## Comhaltas Ceoltoiri Eireann Irish

**Pennywhistle Classes • Fairfax, VA**

**Alternate Saturdays, February - May • 10 am - 1 pm**

John Wood Center, 3730 Old Lee Highway, sponsored by the local O'Neill-Malcolm chapter. Beginner, intermediate and advanced one-hour classes. Eight-week series, \$80. Register by February 7. **Info: Betsy O'Malley 703.560.4719 or omalley99@aol.com.**

## 15th Annual Ski-Dance Weekend

• **Laurel Highlands, PA**

**February 15 to 18**

Contras and cross country skiing will once again coincide, accompanied by music from **Dave Wiesler**, **Susan Brandt**, and **Jeff Steinberg**. Contras and English called by **Robbin Schaffer**. For information, **contact Eliot Applestein or Marta Vogel at 301.984.6855 or eliot.applestein@verizon.net.**

## FSGW's 20th Annual Chesapeake Dance Weekend • Edgewater, MD

**Friday to Sunday, April 12 - 14**

See page 2

## Victoria's Revenge Dancefest • Cape May, NJ

**Friday - Sunday, May 10 - 12**

Come to the 20th Anniversary Dancefest featuring *Double Date* (**David Cantieni**, **Ann Percival**, **Keith Murphy**, and **Becky Tracy**) and *Fiddlestyx* (**Steve Hickman**, **Alexander Mitchell**, **Jon Simmons**, **John Devine**, and **Jim Bieneman**) and calling by **Steve Zakon-Anderson** and **Beth Molaro**. *Double Date* is

*Continued on page 15*

# 35 Years Ago — January 1967

By Joe Hickerson

The January 13th, 1967 FSGW program was **Des & Juliette Rainey** of New Zealand at Pierce Hall. On January 14th **Judy Collins** performed at Lisner Auditorium for FSGW and Stanley-Williams Presentations. The open sing was held January 28 at the Union Methodist Church. The four-page January 1967 (Vol. 3, no. 4) FSGW newsletter included these and future events, proposed amendments, and the president's column. The January 20th FSGW board meeting minutes included a report that "**John Dildine** is having conferences with officers of the Department of Agriculture Graduate School of an amorphous nature." (Watch future issues of this column for results of these conferences.)

The following were also scheduled to perform in the area this month: **Ian & Sylvia** (Cellar Door); **Feis Eireann**, **Andres Segovia** (Lisner); "Voyages in Poetry and Folk Songs" featuring **John Langstaff**, **Robin Roberts Howard** and **Happy Traum** (Trinity Theatre); **Benny & Vallie Cain & The Country Clan** (Jimbo's); **Bob Goff's Bluegrass Buddies** (Candlelite Inn, Dom-Mar Restaurant); **Spruce Mountain Boys** (Buddy's Bar); **The Virginians** (GW Inn); **Page Valley Boys** (L&M Grill, Eldon St. Restaurant); **Virginia Ramblers** (Phil's Truck Stop, Little Home Restaurant). Most of these events were announced in issues of *Bluegrass Unlimited* and *Washington Folk Strums*. Three of the events were reviewed by **Joe Hickerson** in the *Washington Star*.

Meanwhile, the Library of Congress Archive of Folk Song registered the following researchers and visitors: **Frank Andruzzi** (Silver Spring); **George Carey** (Univ. of Maryland); **Seila Coury** (Ministry of Education, Brazil); **Carl Fox** (Brooklyn Museum); **Albert Gamse** (Ashley Publications); **Henry Glassie** (State Folklorist of Pennsylvania); **Theodore Grame** (Yale University); **Felix Iwande** (Univ. of Ibadan, Nigeria); **Chuck & Nan Perdue** (FSGW); **Paul Prestopino** (Mitchell Trio); **Ralph Rinzler** (Cambridge, MA, and consultant, Smithsonian Institution); **Charles Seeger** (UCLA).

*Joe Hickerson, head of the Archive of Folk Culture at the Library of Congress until his retirement in 1998, is available to sing and lecture about folk music. A founding member of FSGW, he has served as the Society's President, Program Chair, and Book Review Editor, and now contributes a monthly column describing FSGW and other area events 35 years ago. If any readers have relevant flyers, clippings, etc. from 1966-67, please mail copies to Joe at 43 Philadelphia Avenue, Takoma Park, MD 20912 for possible inclusion in this column.*

## Local Folkal

The FSGW Newsletter provides a listing of local performers who appear at small venues. Send your name or band name, very brief description of your musical style, and web address, e-mail, and/or phone number to the Newsletter Editor.

### SOLO PERFORMERS

**BONNEVILLE, JOHNNY** johnnybonneville@hotmail.com or 1.888.961.7647. Duet w/ Fiddlin' Phil  
**BRESEE, JERRY** <http://www.shenandoahacoustics.com/jbresee>  
**BROWN, MARY BYRD.** <http://www.geocities.com/SunsetStrip/Stage/8829/>  
**COOK, JUDY** judy@ceimd.com or <http://www.ceimd.com/folksing.htm> or 301.776.4314  
**CROSS, RACHEL** <http://www.rachelcross.com> folk/world music performer  
**DURFOR, CHUCK** <http://hometown.aol.com/cdurfor> Fingerstyle guitar.  
**EHRIG, GRETA** singer-songwriter-poet LivePoetry31@aol.com  
**GELLMAN, STEVEN** Hiddenpoet@aol.com or [www.HiddenPoet.com](http://www.HiddenPoet.com)  
**HICKERSON, JOE** Jhick@starpower.net or 301.270.1107 Vintage paleo-acoustic folksinger  
**HOAG, ANDREA** <http://www.andreaHoag.com> or 301.565.2777 Fiddler, singer, wordsmith.  
**KAMINSKY, RAY** <http://www.earbuzz.com/raykaminsky> Piedmont and Delta blues  
**KENNELLY, CLETUS** [www.cletuskennelly.com](http://www.cletuskennelly.com)  
**KEY, STEVE** [www.stevekey.com](http://www.stevekey.com), [stevekey@aol.com](mailto:stevekey@aol.com) or 202.244.7524 Singer/songwriter, guitar teacher  
**MAGILL, NANCY** [mizmagill@aol.com](mailto:mizmagill@aol.com). 301.951.6242 Jazziblufolktunes


**MARKLEY, LENA AND SANFORD** <http://www.lena-and-sanford.com>  
**McKNIGHT, ANDREW** <http://songs.com/andrew>  
**McVEY, JOHN** <http://www.johnmcvey.com>  
**MUIR, CHRISTINA** <http://songs.com/hotsoup>  
**PARSONS, BILL** [bill@songs.com](mailto:bill@songs.com) or [www.billparsons.com](http://www.billparsons.com)  
**PRASADA-RAO, TOM** <http://songs.com/tpr>  
**ROSS, GARTH** <http://www.garthross.com>  
**SCHWARTZ, ERIC** <http://www.ericsschwartz.com>  
**SWAN, MICHELLE** <http://www.michelleswan.com> Contemporary folk singer/songwriter  
**TAYLOR, LISA** <http://www.shenandoahacoustics.com/ltaylor>  
**TWOHY, MARY SUE** [www.marysuetwohy.com](http://www.marysuetwohy.com)  
**TYSON, HERB** <http://www.herbtyson.com>  
**WILCOX, DOUG ALAN** [www.dougalanwilcox.com](http://www.dougalanwilcox.com) Contemporary americana, acoustic pop.

### GROUPS

**ALEXANDRIA KLEZTET** [kleztet@aol.com](mailto:kleztet@aol.com) or <http://members.aol.com/kleztet/> or 410.521.0616. Traditional and innovative klezmer.  
**BILL KIRCHEN & TOO MUCH FUN** [www.billkirchen.com](http://www.billkirchen.com) Roots rock and rockabilly.  
**BLUE MOON COWGIRLS** [kecollins@starpower.net](mailto:kecollins@starpower.net) or <http://www.bluemooncowgirls.com> or 301.270.2586. Acoustic early country  
**BOTTOMLAND** [bottomland@hotmail.com](mailto:bottomland@hotmail.com) or [www.bottomland.org](http://www.bottomland.org) or 301.587.1198


Continued on page 14

# JANUARY 2002

SUNDAY	MONDAY	TUESDAY	WEDNESDAY	THURSDAY
CLEANLINESS IS NEXT TO IMPOSSIBLE.		<b>1 NEW YEAR'S DAY</b> 3 FSGW Sacred Harp Singing 7:30 Herndon Folk Club 7:30 Jammin' Java Open Mic 8 Arlington Intl Folk Dance 8 Silver Spring Israeli 9 Greenbelt Scottish Country 8 Silver Spring Squares	<b>2</b> 7:30 Alexandria Scottish Country 8 FSGW ENGLISH COUNTRY DANCE 8 Baltimore Contra (Lovely Ln) 8 Bangkok Blues Open Mic 8 Columbia Intl Folk Dance 8 Potomac Israeli Folk Dance	<b>3</b> 7:30 FSGW ENGLISH COUNTRY DANCE 7:30 Baltimore Contra (Lovely Ln) 8 Bangkok Blues Open Mic 8 Columbia Intl Folk Dance 8 Potomac Israeli Folk Dance
<b>6</b> 1 House of Musical Traditions 3 Glen Echo Waltz 7:30 FSGW SUNDAY NIGHT CONTRA DANCE	<b>7</b> 7 Bluemont Morris 7:30 Bethesda Intl Folk Dance 8 IMT Open Mic 8 Baltimore English Country 8 Silver Spring Scottish Country	<b>8</b> 7:30 Herndon Folk Club 7:30 Jammin' Java Open Mic 7:45 Herndon English Dance 8 Arlington Intl Folk Dance 8 FSGW BOARD MEETING 8 Silver Spring Israeli Folk 9 Greenbelt Scottish Country 8 Silver Spring Squares	<b>9</b> 7 Laurel Jam Session 7:30 Alpine (Swiss Emb.) 7:30 Alexandria Scottish Country 8 FSGW English Country 8 Baltimore Contra (Lovely Ln) 8 Columbia Intl Folk Dance 8 Potomac Israeli Folk Dance 8 Baldwin's Station Concert 8 Vic's Music Corner	<b>10</b> 7:30 FSGW ENGLISH COUNTRY DANCE 7:30 Baltimore Contra (Lovely Ln) 8 Bangkok Blues Open Mic 8 Columbia Intl Folk Dance 8 Potomac Israeli Folk Dance
<b>13</b> 1 House of Musical Traditions 2 CABOMA Jam 3:30 FSGW Community Dance 4 Alpine (New Carrollton) 4 FSGW GOSPEL SING 7:30 FSGW SUNDAY CONTRA 8 House Concert (S. Kennedy)	<b>14</b> 7 Bluemont Morris 7:30 Bethesda Intl Folk Dance 8 IMT Concert 8 Baltimore English Country 8 Silver Spring Scottish Country	<b>15</b> 7:30 Herndon Folk Club 7:30 Jammin' Java Open Mic 8 Arlington Intl Folk Dance 8 Silver Spring Israeli Folk Dance 8 Greenbelt Scottish Country 8 Silver Spring Squares	<b>16</b> 7:30 Alexandria Scottish Country 8 FSGW English Country 8 Baltimore Contra (Lovely Ln) 8 Columbia Intl Folk Dance 8 Potomac Israeli Folk Dance 8 Bangkok Blues Open Mic 8 Baldwin's Station Concert	<b>17</b> 7:30 FSGW ENGLISH COUNTRY DANCE 7:30 Baltimore Contra (Lovely Ln) 8 Bangkok Blues Open Mic 8 Columbia Intl Folk Dance 8 Potomac Israeli Folk Dance
<b>20</b> 1 House of Musical Traditions 2 FSGW Waulking the Cloth Workshop w/ N. Kennedy 3 Glen Echo Waltz 7 Irish Traditional Seisiun 7 Shenandoah Coffeehouse 7:30 FSGW SUNDAY CONTRA	<b>21</b> 7 Bluemont Morris 7:30 Bethesda Intl Folk Dance 8 IMT Concert 8 Baltimore English Country 9 Silver Spring Scottish Country  Martin Luther King, Jr. Day (Holiday) 	<b>22</b> 12 noon Joe Glazer Smith. lecture 7:30 Herndon Folk Club 7:30 Jammin' Java Open Mic 7:45 Herndon English Dance 8 Arlington Intl Folk Dance 9 Silver Spring Israeli Folk Dance 8 Greenbelt Scottish Country 8 Silver Spring Squares	<b>23</b> 7 Laurel Jam Session 7:30 Alpine (Swiss Emb.) 7:30 Alexandria Scottish Country 8 FSGW English Country 8 Baltimore Contra (Lovely Ln) 8 Columbia Intl Folk Dance 8 Potomac Israeli Folk Dance 8 Baldwin's Station Concert	<b>24</b> 7:30 FSGW ENGLISH COUNTRY DANCE 7:30 Baltimore Contra (Lovely Ln) 8 Bangkok Blues Open Mic 8 Columbia Intl Folk Dance 8 Potomac Israeli Folk Dance
<b>27</b> 1 House of Musical Traditions 2 CABOMA Jam 2 Tamburitans (Rockville) 3:30 FSGW SACRED HARP SINGING 5 Old Brogue Irish Pub 7:30 FSGW SUNDAY CONTRA	<b>28</b> 7 Bluemont Morris 7:30 Bethesda Intl Folk Dance 8 IMT Concert 10 Baltimore English Country 11 Silver Spring Scottish Country	<b>29</b> 7:30 Herndon Folk Club 7:30 Jammin' Java Open Mic 8 Arlington Intl Folk Dance 8 Silver Spring Israeli Folk Dance 8 Silver Spring Scottish Country 8 Silver Spring Squares	<b>30</b> 7 Laurel Jam Session 7:30 Alexandria Scottish Country 8 FSGW English Country 8 Baltimore Contra (Lovely Ln) 8 Columbia Intl Folk Dance 8 Potomac Israeli Folk Dance 8 Bangkok Blues Open Mic 8 Baldwin's Station	<b>31</b> 7:30 FSGW ENGLISH COUNTRY DANCE 7:30 Baltimore Contra (Lovely Ln) 8 Bangkok Blues Open Mic 8 Columbia Intl Folk Dance 8 Potomac Israeli Folk Dance



02

THURSDAY	FRIDAY	SATURDAY
<b>FSGW Intl Folkdance</b> Heavy Chase Intl Folk Dance t. Vernon Intl Folk Dance oggy Bottom Morris Men orwegian Telespringar NIH	<b>4</b> 7:30 Songwriters Open Mic 8 Charlottesville Contra <b>8:30 FSGW OPEN SING</b> 8:30 Friday Night Contra 8:30 Greenbelt Intl Folk Dance	<b>5</b> 1 Archie Edwards Blues Jam 8 DC Folk Guitar 8 Shepherdstown Contra 8 Reston Contra 8 Arlington Contra 8 Scandinavian Dance 8 Greenbelt Israeli Special Dance 9 Glen Echo Swing Dance
<b>FSGW Intl Folkdance</b> Heavy Chase Intl Folk Dance t. Vernon Intl Folk Dance oggy Bottom Morris Men beginning Scandinavian NIH	<b>11</b> 8 Cellar Stage/St. John's Concert 8:30 Friday Night Contra 8:30 Greenbelt Intl Folk Dance	<b>12</b> 1 Archie Edwards Blues Jam <b>7:30 FSGW STORYSWAP</b> 7:30 Caffe Florian Concert 8 Baltimore Contra (St. Mark's) 8 Silver Spring Eng. Country 8 Fairfax Ceili
<b>FSGW Intl Folkdance</b> Heavy Chase Intl Folk Dance t. Vernon Intl Folk Dance oggy Bottom Morris Men orwegian Telespringar NIH	<b>18</b> 8 House Concert (K.McDonnell) 8 Dupont Music Circle 8 Charlottesville Contra 8:30 Friday Night Contra 8:30 Greenbelt Intl Folk Dance 9 BFMS/Catonsville Cajun ance	<b>19</b> 1 Archie Edwards Blues Jam 2 <b>FSGW Great Scots Ballads</b> <b>Workshop w/N. Kennedy</b> 8 Crownsville Contra 8 Scandinavian Dance 8 CDSS English Country Dance 8 <b>FSGW Norman Kennedy</b> <b>FREE MONTHLY Concert</b> 9 Glen Echo Swing Dance
<b>FSGW Intl Folkdance</b> Heavy Chase Intl Folk Dance t. Vernon Intl Folk Dance oggy Bottom Morris Men beginning Scandinavian NIH	<b>25</b> 8 Medium Rare Cafe Concert 8:30 Friday Night Contra 8:30 Greenbelt Intl Folk Dance	<b>26</b> 1 Archie Edwards Blues Jam 1:30 Hammer Dulcimer Jam 6:30 The Bardhouse Concert 7:30 House Concert (Blue Moon) 7:30 Tamburitans (Alexandria) 8 Frederick Contra 8 FolkNite (Royal Mile)
<b>FSGW Intl Folkdance</b> Heavy Chase Intl Folk Dance t. Vernon Intl Folk Dance oggy Bottom Morris Men beginning Scandinavian NIH <b>FSGW BRYAN BOWERS</b> <b>CONCERT</b>		<i>Saturday, February 2</i> <b>30th Annual FSGW Mini-Fest</b> <i>12 noon-6 pm Workshops,</i> <i>mini-concerts &amp; dances</i> <i>7:30 pm Evening Concert</i> <i>&amp; Evening Dance!</i>

## ADVANCE NOTICE

### FSGW 2002

**Saturday, February 2:**  
**30TH ANNUAL FSGW MINI-FEST**  
 Takoma Park Middle School, MD

**Saturday, February 16:**  
 FSGW Monthly FREE Program  
**RED MOUNTAIN WHITE TRASH**  
 Old Time String Band from Alabama  
 WES Auditorium, DC

**Saturday, March 2:**  
**PETE COE** House Concert  
*British traditional & contemporary*  
*singer/instrumentalist*

**Saturday, March 9:**  
**THE IRISH IN AMERICA**  
 WITH DAN MILNER, BOB CONROY & FRIENDS  
 WES Auditorium, DC

**Friday, April 5-Sunday April 7, 2002:**

**POTOMAC SACRED HARP**  
**CONVENTION**  
 Location TBA

**Thursday, April 11:**  
**SPARKY RUCKER**  
 Location TBA

**Friday, April 12-Sunday, April 14, 2002**  
**20TH ANNUAL CHESAPEAKE**  
**DANCE WEEKEND**  
 Camp Letts, Edgewater, MD

**Saturday, April 20:**  
 FSGW Monthly FREE Program  
**CINDY KALLET**  
*original and traditional songs*  
 WES Auditorium, DC

**Sunday, April 21:**  
**SWALLOWTAIL**  
 Spanish Ballroom Glen Echo, MD

**Saturday, June 15:**  
 FSGW Monthly FREE Program  
**KENDALL MORSE**  
*singer and humorist from Maine*  
 WES Auditorium, DC  
**October 18th-20th;**  
**37TH ANNUAL FSGW GETAWAY**  
 Camp Ramblewood, MD

## Local Folkal continued from page 11

**CORAL CANTIGAS** [www.cantigas.org](http://www.cantigas.org) or 301.816.2314  
Spanish/Hispanic choral music.

**HOT SOUP** [hotsoup@pobox.com](mailto:hotsoup@pobox.com) or  
[www.hotsoup trio.com](http://www.hotsoup trio.com) Harmony and laughter.

**KLEZCENTRICITY** [www.klezcentricity.com](http://www.klezcentricity.com) or  
[djg@well.com](mailto:djg@well.com) or 301.589.4847 Yiddish-American  
music.

**KREWE OF RENEGADES** [KreweRC@earthlink.net](mailto:KreweRC@earthlink.net) or  
[www.kreweofrenegades.com](http://www.kreweofrenegades.com) or 301.942.5217.  
New Orleans R&B, funk, and soul.

**LIBERTY DAWNE AND THE OVERHAULERS**  
[Libertydawne@erols.com](mailto:Libertydawne@erols.com) Old-fangled country  
music.

**OKLAHOMA TWISTERS** [www.oktwisters.com](http://www.oktwisters.com) or  
[okt@pressroom.com](mailto:okt@pressroom.com) or 703.536.9839.  
Western Swing.

**SEDENKA** [Katya@partan.com](mailto:Katya@partan.com) Katya Partan 301-270-  
4175 Balkan folk songs. Instrumentalists also  
welcome.

**SQUEEZE BAYOU** [kecollins@starpower.net](mailto:kecollins@starpower.net) or  
<http://www.squeezebayou.com> or 301.270.2586.  
Traditional Cajun dance music.

**URBAN LEGENDS** [www.theurbanlegends.com](http://www.theurbanlegends.com) or  
[urban.legends@pressroom.com](mailto:urban.legends@pressroom.com) or 703.532.4599.  
Traditional and contemporary acoustic music.

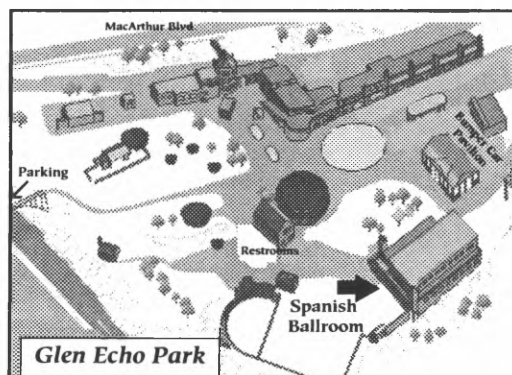
## DIRECTIONS TO FREQUENT VENUES:

### Washington Ethical Society (WES)

**Auditorium.** 7750 16th St., NW, just south of  
the intersection of Kalmia Rd. and 16th St.,  
about four blocks inside the DC/MD line.

**From the Beltway:** Take the Georgia Avenue  
South exit. Stay in either right lane. Go 0.4 miles  
from the exit ramp, where the right lanes curve  
and put you on 16th St South. Follow 16th past  
East-West Hwy (Rte 410); cross the MD/DC line  
at Portal Dr. Kalmia Road is the first traffic signal  
south of the line, and WES is the second build-  
ing on the right after you cross Kalmia. You may  
park on Kalmia Road by turning right at the light,  
or on either side of 16th St.

**Spanish Ballroom, Glen Echo Park.** 7300  
MacArthur Blvd. at Goldsboro Rd, in Glen  
Echo, MD. The Ballroom is the large building  
(no exterior sign), located next to the playground  
and near the carousel.



### From the Beltway:

**MARYLAND SIDE:** at 2-lane Exit 40 take the left  
fork for Cabin John Parkway. Where Cabin John  
merges with Clara Barton Pkwy, move into the  
left lane, under the overhang.

**VIRGINIA SIDE:** get into the far right hand lane at  
the top of the bridge. At the first fork, bear right.

Stay in the left lane; watch for Cabin John traffic  
merging from the right at the overhang.

**MD/VA:** Watch for signs to MacArthur Blvd.  
Make a very sharp hairpin turn and move imme-  
diately into the right lane. At the T intersec-  
tion/stop sign, turn left onto MacArthur Blvd.  
Upper parking lot on the left. For lower parking  
lot, go around the small traffic circle and make  
the first left onto Oxford St.

By public transportation: Take the #29 bus from  
the Friendship Heights Metro Station. Ask the  
driver to let you know when to get off for Glen  
Echo Park. The bus stops running before the  
dance ends. Ask the dance coordinator to  
announce you need a ride. We've never left any-  
body at the park. Last bus leaves Friendship  
Heights Metro at 7:30 pm.

### Glen Echo Town Hall

6106 Harvard St., Glen Echo, MD:

### From the Beltway:

**MARYLAND SIDE:** at 2-lane Exit 40 take the left  
fork for Cabin John Parkway. Where Cabin John  
merges with Clara Barton Pkwy, move into the  
left lane, under the overhang.

**VIRGINIA SIDE:** get into the far right hand lane at  
the top of the bridge. At the first fork, bear right.  
Stay in the left lane; watch for Cabin John traffic  
merging from the right at the overhang. **MD/VA:**  
Watch for signs to MacArthur Blvd. Make a very  
sharp hairpin turn and move immediately into  
the right lane. At the T intersection/stop sign,  
turn left onto MacArthur Blvd. Go around the  
small traffic circle. Third left is Harvard Ave.

**PLEASE NOTE:** Please park in the lot behind the  
hall, on University Drive, or on the east side of  
MacArthur, NOT on Harvard Street.

## Workshops & Weekends continued from page 10

a band comprised of two married couples who happen to make up most of *Wild Asparagus* and *Nightingale*. **Steve Zakon-Anderson** is the perfect caller for this perfect band. **Fiddlestyx** brings together some of the finest fiddlers and a great rhythm section. **Jon Simmons**, one of the original members of *Fiddlestyx*, is joining them for the special occasion. **Beth Molaro** is a powerful and exciting caller for this hard-driving band. For more information, call Jamie Platt, 301.320.7099, or visit the website at [www.contradancers.com](http://www.contradancers.com)

### Almost Heaven Contra and Swing

• Capon Bridge, WV

May 24 - 27

Make your Memorial Day Weekend truly memorable. Sponsored by the Annapolis Traditional Dance Society, at Buffalo Gap Camp. Great bands and wonderful callers. Additional information available shortly. Joyce Duffy-Bilanow at 301.596.0487; [joyceyens@home.com](mailto:joyceyens@home.com); or <http://www.contradancers.com>

## Dances

### CAJUN/ZYDECO

#### Third Thursday Cajun Dance

Thursday, January 17 \* 8 pm

Savoir Faire Cajun Band performs at Chick Hall's Surf Club, always followed by the hot country swing band Heroes and Friends. \$5 Info: 301.927.6310 or [www.chickhallssurfclub.com](http://www.chickhallssurfclub.com)

#### Zydeco Dance • Catonsville, MD

Friday, January 18 • 8 pm

**Lil' Pookie & The Zydeco Heartbreakers** return to the Baltimore area this month. **Lil' Pookie** has been playing zydeco since age 11, and has led the **Heartbreakers** for the past eight years. A young, hip, but curiously traditional Zydeco sound. Bring your dance shoes and dance the night away! Barn Theater at Catonsville Community College. Dance lesson at 8, partners not necessary, newcomers welcome! Music 9 to midnight. Admission: \$10, \$8 for Baltimore Folk Music Society members, \$4 CCBCCC students (ID required). Refreshments will be on sale. Co-sponsored by BFMS and Catonsville Community College Office of Student Events. Info: [TriciaR1@aol.com](mailto:TriciaR1@aol.com) or Cajun/Zydeco web site: <http://www.cajunzydeco.net/>

From I 95, exit at Route 195; take Route 166 north (Rolling Road) towards Catonsville. At the second light (Valley Road) turn left onto the campus. Barn Theater is the stone building on the hill beyond parking lot.

#### Zydeco Dance

Sunday, January 20 \* 7 - 10 pm

**Canecutters** perform at Chick Hall's Surf Club. Info: 301.927.6310 or 703.549.4882 to verify time.

### COMMUNITY/FAMILY

#### The FSGW Community Dance

Listed on page 2.

### CONTRA

#### Sundays:

#### The FSGW Sunday Night Contra Dances

Listed on page 2.

#### Wednesdays:

#### BFMS Lovely Lane Contra Dance • Baltimore, MD

Wednesdays, 8 - 11 pm

Lovely Lane Church, 2200 St. Paul St., Baltimore, MD. Sponsored by the Baltimore Folk Music Society. All dances are taught and walked through. Beginners are always welcome and are encouraged to arrive promptly at 8 pm. Nationally known musicians and callers appear regularly. Free beginners' workshops on 2nd and 4th Wednesdays at 7:30. Admission: \$6 for BFMS/FSGW Members, \$8 for Non-members. Info: [www.bfms.org](http://www.bfms.org) or 410.321.8419.

#### January

- 2 Caller **Peggy Myers** with music by **EMS: Marc Glickman** (piano), **Elke Baker** (fiddle), and **Susan Brandt** (flute).
- 9 Caller **Ridge Kennedy** with music by **Fiddlestyx: Steve Hickman** (fiddle), **John Devine** (guitar), and **Jim Bieneman** (bass).
- 16 Caller and band TBA
- 23 Caller **Ted Hodapp** with music by **Mortal Wombat: Carl Friedman** (fiddle), **Ralph Barthine** (guitar), **Suzanne Friedman** (flute) and **Michael Friedman** (piano).
- 30 Caller **Steve Gester** with music by **Dr. Twamley's Audio Snakes: Mike Rovine** (fiddle) **Jill Smith** (piano), **Paul Oorts** (mandolin, banjo, guitar, and accordion), and **Charlie Pilzer** (bass).



## Dances continued

### Fridays

#### Friday Night Contra Dances • Glen Echo, MD *Fridays • 8:30 - 11:30 pm*

The Friday Night Dancers, in cooperation with the National Park Service, sponsor contra dances (with occasional squares and couples dances) to live music in the Spanish Ballroom (Directions, page 14). Beginners' workshop at 7:30 pm. Dance starts at 8:30. Admission: \$6. To play for or call a dance, email [fnbook@folkdancer.com](mailto:fnbook@folkdancer.com). **For other information: Friday Night Dance Hotline, 202.216.2116 or <http://fnd.folkdancer.com>**

### January

- 4 Dance to music by **Laura Light** (fiddle), **Dan Sebring** (guitar and mandolin), and **Dave Wiesler** (piano); caller TBA.
- 11 The ever-popular **Glen Echo Open Band**. Caller TBA
- 18 **Bill Wellington** from Staunton, Virginia, calls to music by **Stay Tuned** from Charlottesville, featuring **Pete Marshall** (octave mandolin), **TJ Johnson** (mandolin and fiddle), and **Paddy League** (percussion).
- 25 **Ann Fallon** calls to music by **Microchasm**: **Laura Lengnick** (fiddle), **Steve Hickman** (fiddle), **David Wiesler** (piano), **David Crandall** (saxophone), and **John Devine** (guitar).

#### Charlottesville Contra Dance • Charlottesville, VA *1st, 3rd, and 5th Fridays • 8 - 11 pm*

At MACCA, Rte 29 South to Charlottesville. East onto Rte 250. Just after the light at McIntire Rd., turn north on Park St. Go a block to the first marked pedestrian crosswalk and turn left into the alley. Beginners' workshop at 7:30. Admission \$6. **Info: [www.contradance.sbc.edu](http://www.contradance.sbc.edu) or Rob Craighurst at 804.971.8863.**

### Saturdays

#### First Saturday Contra Dance • Shepherdstown, MD *Saturday, January 5 • 8 - 11 pm*

**Bev Smith** will call to the tunes of **Mando Mafia**. Beginners' workshop at 7:15 pm, Contra beginning at 8. At the War Memorial Building (Men's Club), corner of German and King Streets. Admission \$5 Members, \$6 Non-members, \$4 dancers under age 26. Potluck refreshments at the break Dancers must bring soft-soled shoes. **Info: <http://www.contradancers.com/shepherdstown/index.html> or 304.725.0266 or 304.876.2169.**

#### Reston Contra Dance • Reston, VA *Saturday, January 5 • 8 - 10:45 pm*

The Reston Contra Dance resumes for a four-month miniseries with **Susan Taylor** calling to the live(ly)

music of **June Apple**. Dances are at the Reston Community Center, 2310 Colts Neck Road. Beginners' workshop at 7 p.m, dance 8-10:45. \$5 covers both. **Info: Alice Markham 703-709-9121; e-mail, [anote20@earthlink.net](mailto:anote20@earthlink.net)**

#### Arlington Contra Dance, Arlington, VA *Saturday January 5, 8:00*

**Liz Donaldson** will call contras, circles, and squares at the Barcroft Community House, 800 S. Buchanan St.. All steps and dances will be taught and walked through, so non-dancers can participate immediately. Live music by **JumpStart: Julie Gorka** (piano and fiddle), **Kathy Kerr** (fiddle), and **Jim Besser** (guitar and concertina).

#### Second Saturday Dance • Baltimore, Md *Saturday, January 12 • 8-11 pm*

**Gaye Fifer** calls to music by **Mortal Wombat: Carl Friedman** (fiddle), **Ralph Barthine** (guitar), **Suzanne Friedman** (flute) and **Michael Friedman** (piano). St. Mark's on the Hill Parish Hall, 1620 Reisterstown Rd., Baltimore, MD, .5 mile inside the Baltimore Beltway (695) at Exit 20 South. Admission: \$8, \$6 for BFMS members and affiliated groups. Discounts for children, families, students. **Info: [www.bfms.org](http://www.bfms.org), hotline at 410.366.0808, or Ralph Barthine at 410.561.4573 or [rbarthin@bcpl.net](mailto:rbarthin@bcpl.net).**

#### Bluemont Country Dance - Bluemont, VA *Saturday, January 19 - 8 - 11 pm*

**Gary Frock** will call to the music of the **Mighty Possums: Joe DeZarn** on fiddle, **Ralph Gordon** on bass and **Tabby Finch** on piano. Beginners' workshop at 7:30pm, dance from 8 to 11 pm. Everyone is encouraged to bring potluck refreshments to share at the break. Old Bluemont School, Bluemont, VA. Admission: \$7 per person, \$5 for Bluemont Friends and students. Directions: follow VA Route 7 to Bluemont in Western Loudoun County; exit south on Route 760; proceed 200 yards to T intersection with Route 734; turn left, Old Bluemont School Community Center is 1/4 mile on left.

**Info: [www.bluemontcs.org](http://www.bluemontcs.org), BCS office 703.777.6306 or [bluemontcs@aol.com](mailto:bluemontcs@aol.com).**

#### Third Saturday Contra Dance • Crownsville, MD *Saturday, January 19 • 8 - 11 pm*

Beginners' workshop at 7:30. \$6 members, \$8 non-members. No partner or experience required. **Eva Murray** calls to the music of **Blessings in Disguise** with **Richard Seidel** (bass), **Jeff Steinberg** (fiddle), **Bob Garber** (clarinet), **Mike McGeary** (banjo), and **Alice Markham** (piano). FOP Hall, Rt. 178, Crownsville. **Info/directions: 410.224.8488 or [w4c.com/dance/atds](http://w4c.com/dance/atds) or <http://w4c.com/dance/atds/>.**

## Dances *continued*

### Lancaster Contra Dance • Lancaster, PA

**Saturday, January 19 • 8 - 11 pm**

**Fiddlestyx** with **Steve Hickman** (fiddle), **John Devine** (guitar), and **Jim Bieneman** (bass), **Don Flaherty** calls. St. John's Episcopal Church, 321 W. Chestnut St., Lancaster PA. **Info:** **Shirley** at **sam@mcc.org** or **Shane** at **717.390.7277**.

### Fourth Saturday Contra Dance • Frederick, MD

**Saturday, January 26 • 8 - 11 pm**

**Eva Murray** calls to the music of **Dr. Twambley's Audio Snakes** with **Mike Rovine** (fiddle), **Jill Smith** (piano), **Paul Oorts** (mandolin, banjo, accordion), and **Celia Wyckoff** (bass, recorder). Beginners' workshop at 7 pm. Admission \$6. Dance is held at the former Adventist school near Harry Grove Stadium. For updated directions and maps, please visit the newly updated website at <http://www.contradancers.com> or call **Boe Walker** at **301.694.6794**.

### Crab Contra • Easton, MD

**Saturday, January 26 • 8 - 11 pm**

The third dance of the 2001-2002 season will take place at Cross Court Athletic Club, 1180 South Washington Street in Easton. Caller will be **Dick Bearman**. The musicians TBA.

Admission \$7. No partner or experience is necessary - all are welcome. **Info:** **Jane Terebey** at **410.479.1343 x.1** or **410.479.1410**.

### BFMS Midwinter Ball • Towson, Maryland

**Saturday, February 2, 8-11 pm**

Maryland's own **Robin Schaffer** will call to Nightingale at the annual BFMS Mid-Winter Ball. **Becky Tracy** (fiddle), **Keith Murphy** (piano, guitar, foot percussion, vocals), and **Jeremiah McLane** (piano, accordion) will provide music for the revelry, which begins with a reception at 7 pm, followed by a Grand March at 8 pm. Chesapeake Room of the University Union, Towson University. \$14 for BFMS Members and affiliates, \$18 for Non-members. **Info:** **410.252.1964**, **midwinterball@bfms.org**, or **bfms.org**.

## ENGLISH COUNTRY

### **Mondays:**

#### **Baltimore Folk Music Society • Baltimore, MD**

English Country Dancing is joyous, lively movement to elegant music in a friendly, informal setting. The figures are simple, and each dance is taught and walked through. New dancers are always welcome. Beginners' workshop on the first Monday promptly at 7:30 pm. Sponsored in part by the Maryland State Arts Council. Admission: \$6 for Members, \$8 for Non-members. St.

Mark's on the Hill Parish Hall, 1620 Reisterstown Road, one-half mile inside the Baltimore Beltway, at Exit 20 South. **Info:** **410.321.8419**.

### **January**

- 7 Caller **Sam Weiler** to music by **Francine Krasowska** (piano), **Jeff Steinberg** (fiddle) and **Marty Taylor** (flute, concertina).
- 14 Caller **Carl Friedman**, music by **Liz Donaldson** (piano), and **Andrea Hoag** (fiddle).
- 21 Caller **Dawn Culbertson** with music by **Julie Gorka** (piano), **Ellen Schwindt** (fiddle) and **Susan Rudy** (guitar)
- 28 Caller **Christopher Field** with music by **Paul Oorts** (stringed instruments, accordion), **Jonathan Jensen** (piano, etc.) and **Becky Ross** (fiddle).

### **Tuesday:**

#### **English Country Dance (CDSS) • Herndon, VA** **Second and fourth Tuesdays • 7:45 pm**

At Harding Hall, 730 Jackson St., Herndon, VA. Workshop includes figures, phrasing, and style. Live music (guest musicians welcome; call in advance). \$3. No partner or experience necessary. **Info:** **Barbara Harding** **703.437.3615** or **bharding@quixnet.net**.

### **January**

- 8 **Laurie Mielke**, recorder
- 22 **Don Williams** (guitar and English concertina), **Keith Gillis** (guitar)

### **Wednesdays**

#### **FSGW English Country Dance • Glen Echo, MD**

See the listing on page 4.

### **Saturdays**

#### **Twelfth Night Ball • Arlington, VA**

**Saturday, January 5, 6 to midnight**

The Living History Foundation sponsors a Twelfth Night Ball at the Army-Navy Country Club, 1700 Army Navy Drive. Celebrate the Feast of the Epiphany with dinner, Queen and King's cakes. Music by **Devil Among the Taylors!** Adults \$42, children \$18.

**Info:** **Merrie Turner**, **703.491.6586** or **www.Geocities.com/Twelfthnightball2002**

#### **English Country Dance • Silver Spring, MD**

**Saturday, January 12, 8 - 10:45 pm**

At Sligo Middle School, 1401 Dennis Ave, Silver Spring, MD. Dance to music by Peascods Gathering, calling by Barbara Harding and Bob Farrall. Beginners and singles welcome. \$5. **Info:** **Carl Minkus** **301.493.6281**, **Karla Farrall** **301.577.5018**.





**Dances continued****English Country Dance (CDSS) • Herndon, VA**  
**Saturday, January 19, 8 - 10:45 pm**

3rd Saturday English Country Dance at Harding Hall, 730 Jackson Street, Herndon, VA. Caller **Barbara Harding** with recorded music. Free. Info: **Barbara Harding** at 703.437.3615 or [bharding@quixnet.net](mailto:bharding@quixnet.net)

**INTERNATIONAL****ALPINE****Swiss Embassy • Washington, DC**

**Wednesdays, January 9 and 23 • 7:30 - 10 pm**

Swiss folk dancing to recorded music on the wooden floor at the Swiss Embassy, 2900 Cathedral Avenue NW, DC. Sponsored by the Swiss Folklore Group, admission is free. Beginners are welcome. Info: **Fran Walters** 301.530.5643.

**Alpine Dancers • New Carrollton, MD**

**Sunday, January 13, 4 - 6:30 pm**

Free open practice of the Alpine Dancers, specializing in couples and trio dances from Austria and Germany. Taped and live music. New dancers welcome. New Carrollton Municipal Center, 6016 Princess Garden Parkway, near Washington Beltway exit 20A. Confirm dates, as practices may be replaced by performances. Info/directions: **Herbert and Carol Traxler** at 301.577.3503 or [www.geocities.com/alpinedancers](http://www.geocities.com/alpinedancers).

**CEILI (IRISH)****Ceili Dance • Fairfax, VA**

**Saturday, January 12 • 8 - midnight**

Comhaltas Ceoltoiri Eireann (CCE) sponsors a monthly (2nd Sat.) Ceili Dance at the John Wood Center, 3730 Old Lee Hwy., Fairfax, VA. Lesson at 7:30 pm. Free tea, coffee, sodabread. Admission: \$10 (Family \$20). Info: **Gene Nazarowitz** 703.444.9368.

**INTERNATIONAL****Mondays****Bethesda International Folk Dancing • Bethesda, MD**  
**Mondays • 7:30 - 10 pm**

Dance on the wood floor of the Leland Community Recreation Center social hall, 4301 Willow Lane, Bethesda, MD. No partner necessary. 7:30 pm Beginners teaching, 8 pm intermediate/advanced and requests. Mostly recorded but occasionally live music and workshops. Admission \$5. Info: **Phyllis** or **Brandon Diamond**, 301.871.8788.

**Tuesdays****Arlington International Folk Dancing • Arlington, VA**  
**Tuesdays • 8 - 10 pm**

At Key Elementary School, off Veitch St. between Wilson and Key near the Courthouse Road Metro, Arlington, VA \$3. Recorded music. Instruction, walk-throughs, and requests. Singles welcome and all ages or levels of expertise. Info: 703.527.8998 or [sstulberg@earthlink.net](mailto:sstulberg@earthlink.net)

**Wednesdays****Columbia International Folk Dancing • Columbia, MD**  
**Wednesdays • 8 - 10:30 pm**

Kahler Hall, Beaverkill Rd. & Harper's Farm Rd., Columbia, MD. Admission \$3. Recorded music. Beginners welcome. Teaching until 9 pm. We have parties and workshops. Info: 410.997.1613 (night), or 301.495.4642 (day).

**Thursdays****Chevy Chase International Folk Dancers**  
**• Washington, DC**  
**Thursdays • 7:30 - 9:30 pm**

Chevy Chase Community Center, 5601 Connecticut Ave, NW, Washington DC (Connecticut Ave. at McKinley St., 2 blocks south of Chevy Chase Circle). Instruction and walk-throughs until 8:30. All levels welcome. No partner necessary. Recorded music. Leader **Roland Forbes**. Info: **Jackie Davis** 301.424.8827 or **Naomi Rogers** 301.438.0063.

**Mount Vernon International Folk Dancing**  
**• Alexandria, VA**  
**Thursdays • 8 - 10 pm**

Mount Vernon Unitarian Church meeting hall, 1909 Windmill Lane, Alexandria, VA. Instruction, walk-throughs, requests. No experience or partner needed. Admission \$2.50. Recorded music. Info: 703.780.2393 or [kkkrogh@aol.com](mailto:kkkrogh@aol.com).

**Fridays****Greenbelt International Folk Dancing • Greenbelt, MD**  
**Fridays • 8:30 - 11 pm**

Focusing on dances from Eastern and Western Europe, Scandinavia, and the Mediterranean. No partner or experience necessary. Teaching from 8:30 - 9:15 pm, request dancing 9:15-11 pm. Mostly recorded music. Greenbelt Community Center Dance Studio (beautiful wooden floor!), 15 Crescent Rd., Greenbelt, MD. Admission \$5. Info: **Larry Weiner** 301.565.0539 or [weiner@erols.com](mailto:weiner@erols.com); **John Robinson** 410.715.9210; and **John Bartholomew** 301.565.3650.

---

**Dances continued**

---

---

**ISRAELI**

---

**Israeli Dancing • Silver Spring, MD****Tuesdays • 8 - 11 pm**

Shaare Tefila Congregation, 11120 Lockwood Drive, Silver Spring (near intersection of Route 29 and New Hampshire Ave.) 8-9, Beginner/intermediate teaching. 9-11, Advanced teaching/open dancing. Admission \$5/\$2 students. **Info: Helen Rubin, 703.207.1551 or Helen@israelidance.com.**

**Israeli Dancing • Potomac, MD****Wednesdays • 8 to 11 pm**

Har Shalom Congregation, 11510 Falls Rd., Potomac, MD. Instruction 8-9:15. Oldies only (dances before 1990). Recorded music. \$5. **Info: Ben Hole, 301.441.8213.**

**Israeli Dancing • Greenbelt, MD****Saturday, January 5 • 8 to 11 pm**

Party of Israeli Oldies (dances before 1990). Recorded music; light refreshments; Greenbelt Community Center, 15 Crescent Road. **Info: Ben Hole, 301.441.8213.**

---

**MORRIS**

---

**Bluemont Morris • Reston, VA****Mondays • 7 - 8:30 pm**

A group of men and women who do traditional Morris dances in the spring and fall. The group is fun and the dancing is addictive and great exercise. **Info: Laura 703.845.8536.**

**Foggy Bottom Morris Men • Chevy Chase, MD****Thursdays • 8 - 10 pm**

Learn traditional dances from English villages and the Welsh-English border regions. Seasonal mumming and long-sword dances. No previous Morris experience necessary but some physical conditioning is recommended as the dance is quite vigorous. New musicians as well as dancers are welcome. Practice is at Chevy Chase School, Rosemary Circle, near Connecticut and Bradley. **Info: Brad Graham at 410.480.3289 or graham@seggmail.com, Bill Brown at 301.270.2014 or wmlbrown@earthlink.net, Jud McIntire at 703.528.0588, or website, www.science.gmu.edu/~bgraham/foggy.html**

---

**SCANDINAVIAN**

---

**Scandinavian Dance • Silver Spring, MD****Saturday, January 5 • 8 - 10:45 pm**

In the gym, east end of Rosemary Hills Elementary School, 2111 Porter Road, Silver Spring, MD. Music by *Peascods Gathering*, teaching first hour by Lisa

Brooks, followed by general dancing. Everybody welcome and everybody dances, beginner or experienced, single or paired (if there's a gender imbalance, the band makes up for it). \$4. **Info: Carl Minkus 301.493.6281, Lorraine Silsbee 301.585.1130.**

**Scandinavian Dance • Greenbelt, MD****Saturday, January 19 • 8 - 11 pm**

Scandia DC sponsors this third Saturday dance party at Greenbelt Community Center (dance studio), 15 Crescent Road, Greenbelt, MD. Live fiddle music by **Andrea Hoag** and the *Scandia DC Spelmannslag*. Some recorded music. No partners necessary. Basics 7:30-8 pm, Scandinavian Waltz 8 -9 pm Learn Slangpolsk, from Ovre Klaralvsdalen - a lively, fun dance from the Varmland region of Sweden \$7. **Info: 202.333.2826, linda@scandiadc.org or www.scandiadc.org.**

---

**SCOTTISH**

---

**Scottish Country Dance • Silver Spring, MD****Mondays • 8 - 10 pm**

*Note new location.* A cousin of English Country Dancing, with similar figures but more challenging footwork. No partner needed, and you certainly don't have to be Scottish. Bring soft, flexible shoes. Taped and live music. Classes for new and experienced dancers: East Silver Spring Elementary School. **Info: Blaine or Denise Peet: 301.942.2831 or blpeet@juno.com.**

**Scottish Country Dance • Greenbelt, MD****Tuesdays • 8 - 10 pm**

Similar to English Country, but more challenging footwork. No partner needed. Bring soft, flexible shoes. Taped and live music. New and experienced dancers. Greenbelt Community Center. **Info: Jennifer Mayrovitz: 410.381.3948 or rjmayro@erols.com.**

**Scottish Country Dance • Alexandria, VA****Wednesdays • 7:30 - 9:30 pm**

Akin to English Country Dancing, but with more elaborate steps. New and experienced dancers welcome. No partner required, but bring soft, flexible shoes. Taped and live music. Jefferson-Houston High School, 1501 Cameron St., Alexandria, VA. Be sure to confirm class date (school events may pre-empt). **Info: Mel or Ellie Briscoe at 703.461.7383 or mail@briscoe.com.**

**Scottish Country Dance • Bethesda, MD****Alternate Fridays • 7:30 - 9:30 pm**

An enjoyable "cousin" of English Country Dancing, Scottish Country Dancing has similar figures but more challenging footwork. No partner needed, and you cer-

## Dances continued

tainly don't have to be Scottish. Bring soft, flexible shoes. Taped and live music. Lots of dance events, weekends, etc. Classes for new and experienced dancers: **Info: Ralph Stoddard at 301.649.5666 or caberfei@aol.com.**

### SQUARE

**Taylor Made Squares • Silver Spring, MD**  
**Tuesdays • 8 - 9:30**

**Betsy Taylor** calls squares to recorded music at the Long Branch Community Center, Piney Branch Rd., Silver Spring, MD. Wood floor. Free admission. No experience or partner necessary. **Info: 301.589.4868.**

### SWING

**Spanish Ballroom • Glen Echo, MD**  
**Saturday, January 5 • 9 - midnight**

Washington Swing Dance Committee, in cooperation with the National Park Service, Introductory swing

lesson 8 - 9 pm, then dance until midnight. Admission \$10. No partner or experience necessary. All ages welcome. Smoke- and alcohol-free venue. Volunteer for one hour and get in free. **Info: [www.wsd.org](http://www.wsd.org) or 202.726.3972.**

### WALTZ

**Sunday Afternoon Waltz • Glen Echo, MD**

Spanish Ballroom, Glen Echo Park (Directions, page 14). A half-hour introductory waltz workshop by **Donna Barker** from 3-3:30 pm; then social dancing to live music 3:30 - 6 pm. Admission: \$5, which includes the lesson. **Info: Donna Barker at 703.978.0375 or <http://users.erols.com/swing4me>**

**January**

**6 Abrazo Sin Fin** with **Laura Lengnick, Dave Wiesler, TJ Johnson, and Ralph Gordon**

**20 Waltzing in Good Company** with **Ralph Gordon, Dave Wiesler, Alexander Mitchell, and Steve Hickman.**

## Dance Classes Class listings may be submitted by FSGW members only.

### Clogging

Traditional Clogging classes, come learn the basics plus a routine you can perform with the Patchwork dancers. New classes begin at Wakefield Recreation Center on Sunday, January 13.

**Info: Jim Maxwell, 703.503.9260, 202.401.3571, e-mail at [jpmxwell@yahoo.com](mailto:jpmxwell@yahoo.com), or <http://home.earthlink.net/~jimmaxwell>.**

### IRISH CEILI

**Ring of Kerry Irish Dancers • Gaithersburg, MD.**  
**Tuesdays, 7 - 9:30 pm**

Lively classes every Tuesday night at Ridgeview Middle School, 16600 Raven Rock Drive. Many experienced dancers come to the beginner class to help, and there is always an atmosphere of fun and friendship. Both set and ceili dances are taught.

Tuesday nights, September through June, in two semesters. Beginners, 7-8 pm Experienced: 8:15-9:30 pm. \$25 per person per semester. No partner is needed (and you certainly don't have to be Irish!). **Info/directions: Marilyn O'Brien at 301.926.6943, or Kevin Wall at 301.916.2872, or Dick de Freyre at 301.294.3568, or <http://www.geocities.com/ringofkerrydancers>, email inquiries to [kbwall@erols.com](mailto:kbwall@erols.com) or [obieobwan@aol.com](mailto:obieobwan@aol.com)**

### SCANDINAVIAN

**Beginning Scandinavian Dancing**  
**• NIH, Bethesda, MD**

**Thursdays, January 10, 24, and 31 • 8 pm**

**WE ARE BACK!!!** Learn Hambo, *schottish*, waltz, *zwiefacher*, and couple turning dances. Singles, couples, beginners, advanced dancers - all are welcome. Mostly recorded music, occasionally live musicians. Come when you can - class is continuous, and some Hambo is done every time. Wear smooth-soled shoes for turning. \$5.

**NEW DIRECTIONS:** Arrive before 8 pm. Enter NIH at Wisconsin and South, where your car will be inspected and you will need to provide ID. Go to the south center of NIH and park in the NIH permit parking, next to Building T-39. Alternatively: park on Battery Lane and walk (5 minutes) to Building T-39 or walk (8 minutes) from the Medical Center Metro stop. See map at [www.HamboDC.org](http://www.HamboDC.org), <http://WWW.NIH.GOV/about/images/niimap.gif>, or on a flyer.

**Info: Lisa Brooks at 301.654.7667, 301.435.5544, or [lisa@HamboDC.org](mailto:lisa@HamboDC.org).**

**Norwegian Telespringar • NIH, Bethesda, MD**  
**Thursdays, January 3 and 17 • 8 pm**

**TELESPRINGAR RETURNS TOO!!!** Learn this wonderful couple dance (a bit like swing). Singles, couples, beginners, and advanced dancers welcome.

## Dance Classes *continued*

**Loretta Kelley** plays. Class is continuous, so come whenever you can. Wear smooth-soled shoes for turning. \$5.

**NEW DIRECTIONS:** Arrive before 8 pm. Enter NIH at Wisconsin and South, where your car will be inspected and you will need to provide ID. Go to the south center of NIH and park in the NIH permit parking, next to Building T-39. Alternatively: park on Battery Lane and walk (5 minutes) to Building T-39 or walk (8 minutes) from the Medical Center Metro stop. Map info listed in Beginning Scandinavian, above. **Info:** Annamarie Pluhar at 301.588.4001 or apluhar@idd-solutions.com, or Lisa Brooks at 301.654.7667, 301.435.5544, or lisa@HamboDC.org.

### SOCIAL DANCE

#### January Dance Workshops • Arlington, VA

**Donna Barker and Mike Marcotte** will teach at Lyon Village Community House, 1920 North 20th Street (North Highland at Lee Hwy).

**Sunday, January 13**, Advanced Waltz, 4:30-7 pm, \$15

**Monday, January 21**, Slow Blues Dancing, 7:15-9:30 pm, \$15

**Sunday, January 27**, Advanced Swing, 4:30-7 pm, \$15

No partner required, but encouraged, to maintain gender balance. All workshops recommended for intermediate level dancers.

**Info:** Donna Barker at 703.978.0375, or swing4me@erols.com, or <http://users.erols.com/swing4medancers>.

### STEPPANCE

#### Cape Breton Steppance Workshop

• Silver Spring, MD

**Saturday • January 26, 2:30 - 5pm**

**Kristin Andrews** of Footworks Percussive Dance Ensemble will teach Ultimate Basics (\$10, 2:30-3), Basics (\$15, 3-4), and Intermediate (\$15, 4-5) (\$30 for all 3 classes; \$20 with advance registration) at Knock on Wood Tap Studio, 8700 Georgia Avenue, Suite B.

**Info/Directions:** Kristin@footworks.org, 410.721.6853, or [www.footworks.org/classlist.htm](http://www.footworks.org/classlist.htm).

### SWING

#### Beginning/Intermediate Swing

**Tap Room, 146 East Maple Avenue, Vienna, VA**

**Donna Barker and Ray Kearney.** Every Wednesday. Beginning swing at 7:15, intermediate swing at 8, followed by DJ'd social dancing until 11. Lesson and dance: \$12 PSDC Members, \$15 Non-

Members. Dance only: \$9 PSDC Members, \$11 Non-Members. Drinks included. **Info:** Donna Barker at 703.976.0375, or <http://users.erols.com/swing4me> or swing4me@erols.com.

#### Intermediate Swing/Lindy

**Lyon Village Community House,  
1920 N. 20th St., Arlington, VA**

**Donna Barker and Mike Marcotte.** "Walk-in" Lessons and dancing every Sunday. 7 - 8 pm, Musicality and Fancy Footwork; 8 - 8:45 pm, Intermediate/advanced swing lesson. 8:45 - 10:30 pm, DJ'd social dancing. Lesson and dance: \$10 PSDC Members; \$12 Non-members. Dance only: \$7 PSDC Members; \$9 Non-Members \$9. Refreshments included

#### Beginning Swing

**Lyon Village Community House,  
1920 N. 20th St., Arlington, VA**

**Donna Barker and Mike Marcotte** teach beginning swing Thursdays, January 3, 10, 17, and 24. 8:15 - 9:30 pm. No partner required. \$39 per person. To preregister, Tony Lau, 703.795.1602.

### WALTZ

#### Beginning Waltz

**Lyon Village Community House,**

**1920 N. 20th St., Arlington, VA**

**Donna Barker and Mike Marcotte** teach beginning waltz Thursdays, January 3, 10, 17, and 24. 7 - 8:15 pm. No partner required. \$39 per person. To preregister, Tony Lau, 703.795.1602.



## Care and Feeding of the Editor

*Submissions are much more palatable if they arrive formatted to match this newsletter. For example, a new dance listing should include:*

**Event Name • City, State**  
**Day of week, Date • Start and end time**

Brief description, including specific location, Caller's name, Band name, members of band plus instrument played (in parentheses), existence of beginners' workshop, Admission price. Directions. Info name, telephone number, and e-mail or website.

*Please note that telephone numbers are punctuated with periods, not hyphens.*



## MAKE A NOTE: March's Deadline is February 8th

MARCH's newsletter will  
close  
TWO DAYS EARLY —  
Friday, February 8th  
(since February's a short  
month, we'll need the extra  
two days)

## Changing your address?

Please mail your information  
to:

Folklore Society of Greater  
Washington

11131 Little Brook Lane  
Fairfax, Virginia 22030  
or e-mail: [member@fsgw.org](mailto:member@fsgw.org)

(Do NOT send info/call the  
Newsletter Editor. She does  
not handle membership data!)



**C L A S S I F I E D S**

**EDITORIAL POLICY FOR CLASSIFIED ADS:** Only FSGW members may place an ad. Ads may be up to 50 words, including telephone number with area code. There is a limit of two ads per member per issue. Ads MUST be relevant to FSGW's stated purpose (see Editorial Policy). Charges: Commercial business: \$8 for 10 words; Non-commercial and individual \$4 for 10 words; 25% discount for any single ad placed in 11 consecutive issues (one year) and paid in advance. LOST & FOUND ads are FREE. Ad copy with check made payable to FSGW must be received by the newsletter deadline. Mail to the Editor: **April Grastorf, 5001 Chanticleer Ave., Annandale, VA 22003.**

**VIOLIN TEACHER:** Swedish, Celtic, classical and other styles. 25 years experience with individuals and groups, all ages. Member of Childs Play. **Julia Borland-Ferneborg, 301.585.3650, juliaferneborg@hotmail.com**

**NEW REVELS CD FOR CHILDREN!** John Langstaff sings THE JACKFISH and Other Songs for Singing Children. Revels founder John Langstaff sings 35 traditional songs and singing games with wonderful tunes easily picked up by children in this new release from Revels Records. CD \$14.95.

**IT IS COLD IN JANUARY BUT WE HAVE SOME HOT DEALS AT HMT.** Announce upon arrival that you are an FSGW

member and save 10% on all books and recordings you purchase that day (offer good through 1/31/02) As we enter our 30th year, we extend a special thank you to FSGW for its unwavering support for the last three decades. **Open 7 days at 11 am, 301.270.9090 or on the web at [www.musicaltraditions.com](http://www.musicaltraditions.com).** Buy-sell-trade-teach-repair all things folk."

**LIVE SOUND REINFORCEMENT.** Concert, dances, conferences, weddings, mitzvahs. Small to large systems, with or without sound engineer from sound check to encore. Folk, ethnic, blues, acoustics, our specialties. **Contact David Eisner at House of Musical Traditions 301.270.9090.** Gobs of experience, references on request.

**CD MANUFACTURING BY OASIS®.** Honest pricing, personal service. Free radio promotion nationwide on OasisAcoustic™ sample CDs. **(888)BY-OASIS, [www.oasisCD.com](http://www.oasisCD.com), or [info@oasisCD.com](mailto:info@oasisCD.com).**

**CD Booklets, labels, J-Cards Design** — Also books, magazines, brochures Designing YOUR ideas! — **Jennifer Woods GRAPHICS 301.587.7174**

**FSGW Board 2001-2002**

<b>Dennis Cook, president</b>	<a href="mailto:president@fsgw.org">president@fsgw.org</a>	<b>301.776.4314</b>
<b>Carl Mintz, past president</b>	<a href="mailto:pastpresident@fsgw.org">pastpresident@fsgw.org</a>	<b>202.543.4999</b>
<b>Sousan Frankeberger, veep</b>	<a href="mailto:vicepresident@fsgw.org">vicepresident@fsgw.org</a>	<b>703.324.8566</b>
<b>Nancy-Jean Seigel, secretary</b>	<a href="mailto:secretary@fsgw.org">secretary@fsgw.org</a>	<b>301.320.0072</b>
<b>Jim Cole, treasurer</b>	<a href="mailto:treasurer@fsgw.org">treasurer@fsgw.org</a>	<b>703.356.9678</b>
<b>Chuck Moran, membership,</b>	<a href="mailto:members@fsgw.org">members@fsgw.org</a>	<b>703.892.4154</b>
<b>Kathy Westra, program</b>	<a href="mailto:program@fsgw.org">program@fsgw.org</a>	<b>301.587.3807</b>
<b>Charlie Baum, special events</b>	<a href="mailto:special@fsgw.org">special@fsgw.org</a>	<b>301.587.2286</b>
<b>Anne Sergeant, dance</b>	<a href="mailto:dance@fsgw.org">dance@fsgw.org</a>	<b>301.270.4553</b>
<b>Liz Milner, publicity</b>	<a href="mailto:publicity@fsgw.org">publicity@fsgw.org</a>	<b>703.658.0957</b>
<b>April Grastorf, publications</b>	<a href="mailto:newsletter@fsgw.org">newsletter@fsgw.org</a>	<b>703.978.7257</b>
<b>Lisa Harmon, at large</b>	<a href="mailto:board1@fsgw.org">board1@fsgw.org</a>	<b>301.592.0432</b>
<b>Sean Doherty, at large</b>	<a href="mailto:board2@fsgw.org">board2@fsgw.org</a>	<b>703.548.3095</b>

**FSGW Board Meeting**

**Tuesday, January 8 • 8 pm**

The monthly FSGW board meeting will be held at Glen Echo Park. All FSGW members may attend. If you wish the Board to consider a particular matter, please contact the appropriate board member or **Dennis Cook, FSGW President, at 301.776.4314.**

**FSGW Newsletter Editorial Policy**

The Folklore Society of Greater Washington endeavors to print copy it deems relevant to its membership and purpose as stated in its by-laws;

*"The main purpose of the Society is to further the understanding, investigation, appreciation, and performance of the traditional folk music and folklore of the American people."*

- All copy (except classified ads) must be submitted by e-mail to [newsletter@fsgw.org](mailto:newsletter@fsgw.org) in text format in the body of the e-mail by the 10th of the preceding month.
- Please review comparable entries from the Newsletter and edit accordingly.
- The Editor reserves the right to edit or omit copy as necessary.

Editor: April Grastorf • [newsletter@fsgw.org](mailto:newsletter@fsgw.org) • 703.978.7257

Design & Layout: Jennifer Woods GRAPHICS Silver Spring, MD • 301.587.7174



The  
**Folklore Society  
of Greater Washington**

11131 Little Brook Lane ❖ Fairfax, VA 22030  
[www.fsgw.org](http://www.fsgw.org)

PRESORTED  
FIRST CLASS MAIL  
US POSTAGE PAID  
ROCKVILLE, MD  
PERMIT #4297

Printed on recycled paper

**Address Service Requested.**



**FIRST CLASS**

114701 200307  
C. S. Fowler, Jr.  
7208 Maple Ave  
Takoma Park MD 20912-4320

The Folklore Society of Greater Washington is a not-for-profit [Section 501(C)(3) of the IRS code] institution and we encourage the financial contributions of our members. Contributions in excess of annual dues are welcome and may be tax deductible. Please mail your gift to FSGW, 412 South Edgewood St., Arlington, VA 22204-2043. Subscriptions to the Newsletter only are available outside the Greater Washington Metro area.

**FSGW IS DEDICATED TO PRESERVING AND  
PROMOTING TRADITIONAL FOLK ARTS IN THE  
WASHINGTON, DC METROPOLITAN AREA.  
MEMBERSHIP IS OPEN TO ALL WHO SUPPORT THESE  
GOALS UPON PAYMENT OF ANNUAL DUES.**

## FSGW Membership Form

☐ Renewal   ☐ New Address   ☐ New Membership

	<u>Individual</u>	<u>Family</u>
1 year	<input type="checkbox"/> \$24	<input type="checkbox"/> \$33
2 years	<input type="checkbox"/> \$44	<input type="checkbox"/> \$63
3 years	<input type="checkbox"/> \$64	<input type="checkbox"/> \$93
LIFE	<input type="checkbox"/> \$400	<input type="checkbox"/> \$600

☐ **Newsletter Subscription ONLY \$16**

Available **ONLY** to those living **OUTSIDE**  
the Greater Washington metro area. Newsletter  
Subscription **ONLY** carries **NO** membership privileges.

Name(s) \_\_\_\_\_

Address \_\_\_\_\_

City \_\_\_\_\_ State \_\_\_\_\_ Zip \_\_\_\_\_

Phone(s) \_\_\_\_\_

H: (\_\_\_\_) \_\_\_\_\_ W: (\_\_\_\_) \_\_\_\_\_

E-mail: \_\_\_\_\_

May we list you in our Membership Directory? (FSGW  
does not provide mailing lists to any other organizations.)

☐ Yes   ☐ No   ☐ Yes, but please do not list my:  
☐ address   ☐ home phone number   ☐ work phone   ☐ e-mail

☐ I would like to help FSGW. Comments/Suggestions: \_\_\_\_\_



Send form and check made payable to FSGW to:

**FSGW Membership** ❖ 412 South Edgewood St., Arlington, VA 22204

FSGW 1/02