

The Folklore Society

of Greater Washington ❖ NEWSLETTER

Vol. 40 No. 4

❖ www.fsgw.org ❖ Hotline: 202-546-2228 ❖

December 2003

FSGW Monthly Free Program

Falls Church, VA

The NexTradition

Ken Schatz & Alison Kelley

Traditional Music in Motion

Saturday, December 20 • 8 pm



Born in June of 1997 at the Mystic Sea Music Festival in Mystic, Connecticut, *The NexTradition* was christened by Heather Wood (of *The Young Tradition*) on the back of a beer menu a few months later.

Alison Kelley and Ken Schatz both grew up with folk music—Alison in New York City, Ken in the DC area with FSGW (his mother is Nancy King). Together, as *The NexTradition*, they perform sea songs and chanteys, gospel and blues, work songs of the railroads, mines, prisons, factories, and fields—the traditional music of the US, Great Britain, and the world.

Alison teaches at The Cobble Hill High School of American Studies, serves on the Board of Pinewoods Folk Music Society of New York, and also performs with *Ida Red*, *The Johnson Girls*, and *The New York Packet*. Ken acts, directs, teaches, and coaches acting for theatre, television, and film. Together as *The NexTradition*, they have performed at folk festivals and for folk clubs across the US and in Europe.

At Knox Presbyterian Church, 7416 Arlington Blvd. at Allen St., Falls Church, VA. No advance tickets. The monthly program is free to FSGW members. Knox Church members \$10; non-members \$15, or join at the door. For further details, see the FSGW website at www.fsgw.org, or call the FSGW hotline at 202-546-2228. If that doesn't answer your questions, you can contact Charlie Baum at 301-587-2286.

Directions to Knox Presbyterian Church: I-495 Beltway in Virginia to Exit 50B—US 50 East, 'Arlington'; go one half mile, left at second traffic light onto Allen St. Church is on near left corner. Parking lot on left off Allen Street behind church. If that lot is full we suggest the library across Route 50 or Loehmann's Plaza one block farther East on Route 50 (there's a protected walk-light crossing of US 50 at Allen St.) Metro: Orange Line to Ballston, then take the 1B, 1C, or 1F Metro Bus (Wilson Blvd-Fairfax Line) to Allen St. and Arlington Blvd.

Please note that this is a **RESCHEDULED CONCERT!**
NexTradition was scheduled to perform in September,
but was cancelled due to the aftermath of Hurricane Isabel.

Inside:

FSGW:	
Advance Notices	13
Board Members/Meeting	14
Chesapeake Dance Weekend	6
Community Dance	2
Editorial Policy	22
English Country Dances	4
International Dance	4
New Year's Contra Dance	6
New Year's English Country Dance	4
Sings	5
Special Event: Concert Saturday, December 13th	
CHRIS ROSSER	3
Storytellers	6
Sunday Night Dances	2
35 Years Ago This Month	23
Volunteer Opportunities	5
Features:	
Calendar	12-13
Classifieds	23
Concerts & Concert Series	7
Dances	15
Dance Classes	20
Directions to Venues	14
Jams/Open Mics/Audience Participation	9
Local Folkal	11
Workshops, Weekends, Festivals	10

FSGW Sunday Night Dance

Glen Echo, MD



FSGW Sunday Night Dance

Contras & Squares

Sundays • 7:30 to 10:30 pm

Spanish Ballroom at Glen Echo Park (Directions, page 14). FSGW, in cooperation with the National Park Service, Montgomery County, and the Glen Echo Park Partnership for Arts & Culture, presents contras and squares danced to live music by fabulous bands with awesome callers. Experienced and new dancers welcome; no partner needed. New dancers please come early, as dances become more challenging later in the evening. **Admission \$7 for FSGW, BFMS, CDSS, and ATDS Members; \$9 for Non-Members.** Dress appropriately for the weather; the Ballroom is not climate controlled, and bring something to drink (no alcohol is permitted in the Park). If you use scented products, such as perfumes, please be considerate of those with allergies and use a gentle hand. **Info: Janine Smith at dance@fsgw.org or www.fsgw.org.**

December

- 7 **Ted Hodapp** calls to *Cabaret Sauvignon* - **Andrea Hoag** (fiddle), **Karen Ashbrook** (flute, hammered dulcimer), **Paul Oorts** (accordion, banjo, mandolin), and **Dave Wiesler** (piano, guitar).
- 14 You're in for a BIG TIME tonight! **Beverly Smith** calls to *The Old Time Wall of Sound* - **Paul Brown** (fiddle), **John Schwab** (guitar), **Bruce Hutton** (guitar) and **Bill Schmidt** (banjo). Bring snacks for the break and let's have a PARTY!
- 21 **Shawn Brennenman** calls to the *Ungermongers* - **Rebecca McCallum** (fiddle, *The Groovemongers*), and **Larry Unger** (guitar, banjo, *Reckless Ramblers*). Small band makes BIG music!
- 28 Honey, c'mon down and get your groove on to the smokin' music of *Contrazz* - **David DiGiuseppe** (accordion), **Rodney Marsh** (jazz saxophone), **Bernie Petteway** (guitar), and **Diane Petteway** (piano). Caller TBA

January 2004

- 4 **Tom Hinds** calls to **Steve Hickman** (fiddle), **Laurie Andres** (accordion), and **John Devine** (guitar). Prize for the "most ancient dancer" in attendance!

**FSGW Community/Family Dance**

Glen Echo, MD

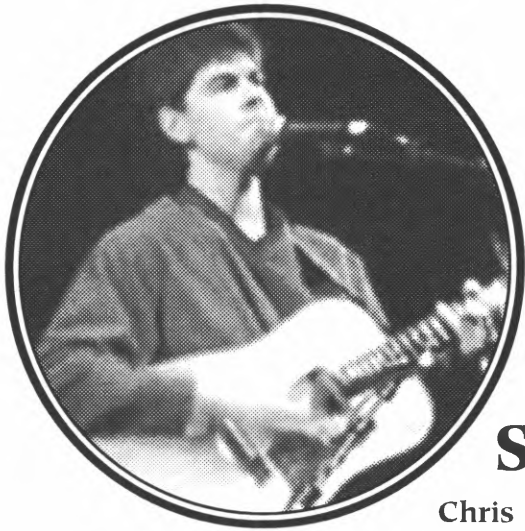
FSGW Community/Family Dance

Sunday, December 14 • 3:30-5 pm

Bev Smith calling to *TuneFish* (Julie Gorka-piano, Richard Seidel-bass, and Jeff Steinberg-fiddle).

At Glen Echo Town Hall, 6106 Harvard Ave. A great opportunity to dance with your kids. Please bring a snack to share at the break. **Admission: \$5 age 4 & up. \$18 family max.** Co-sponsored by FSGW and the World Music and Dance Institute. **For more info, call Bob Mathis and Tali Stopak at 301-589-7539 or www.eefc.org**



FSGW Special Event**Glen Echo, MD**

CHRIS ROSSER

Fine Songwriting — Eclectic Music
Saturday, December 13 • 8 PM

Chris Rosser is definitely not your typical singer-songwriter wielding an acoustic guitar. He plays guitar, Indian *dotar*, Turkish *saz*, Wurlitzer electric piano, electric sitar and more, combining folk, pop and world music into a refreshingly beautiful sound that is anything but ordinary. Self-recorded and produced in his Asheville, NC home studio, Rosser's second solo album *The Holy Fool* showcases his talents as a singer, multi-instrumentalist, arranger, and foremost, as a songwriter. With songs of homecoming queens, ashrams, relationships, spirituality, Federico Fellini and small town churches, he displays his unique lyrical voice in "lovely homages to the experience of being alive and human." (*Dirty Linen*)

Since the release of his highly successful debut album, *Archaeology* (ISG Records), **Chris Rosser** has toured the country, winning first place in the Rocky Mountain Folks Fest 2000 Troubadour contest. He received a grant to study Hindustani classical music with world famous Indian musician, **Ali Akbar Khan**. In 1997, *Archaeology* was also selected as one of the top independent albums of the year by several organizations. His songs have been recorded by **Tom Prasada-Rao** and *Blueground Undergrass*.

Raised in a Baha'i family, Chris was exposed to a diversity of cultures. He was particularly attracted to the haunting music and chanting of the Iranian Baha'is at religious gatherings. A fondness for the music of Bruce Hornsby, Jaco Pastorius and Pat Metheny (and a full scholarship) led him to the prestigious University of Miami School of Music where he studied jazz piano and studio recording.

During his last year in Miami, he taught himself to play acoustic guitar and began to focus seriously on songwriting after discovering contemporary folk musicians like Shawn Colvin, Nanci Griffith, David Wilcox and Patty Larkin. At the same time he began lessons on the tabla drums. Since pursuing music full time since 1995, he has released a duo album *Face the East* (with his wife, Lynn), two solo albums, and shared stages with many of the finest performers in acoustic music.

Admission: \$10 FSGW members/\$12 nonmembers. Glen Echo Town Hall, 6106 Harvard Ave., Glen Echo, MD. Directions Page 14.

Info: the FSGW Hotline at 202-546-2228 or webpage fsgw.org or Betsy Platt 301-320-8255.

General FSGW Concert Information

Unless specifically announced in the Newsletter, there are no advance tickets for FSGW events. All tickets are general admission, and are available at the door.

Doors generally open thirty minutes before the start of the concert.

Absolutely no audio recording or videotaping or photography is allowed at any FSGW concert without the express advance permission of **BOTH** the concert manager and the performer.

FSGW English Country Dance**Glen Echo Town Hall, MD**

FSGW English Country Dances

Wednesdays • 8 to 10:30 pm

Dance on a wood floor in the climate-controlled community room of the **Glen Echo Town Hall** (Directions, page 14). Bring clean, non-scuffing shoes for dancing. Talented callers are accompanied by top-notch musicians playing a delightful mix of instruments, including piano, fiddle, flute, harp, oboe, concertina, bassoon, and viola. Enjoy the welcoming crowd and light refreshments. Experienced and new dancers welcome, no partner needed.

Admission \$7 for FSGW members, \$9 for Non-members. Info: Norm Bernhardt at 301-320-2469; Stephanie Smith at 301-229-3577, or Roger Broseus at English@fsgw.org.

December

- 3 **Barbara Harding** calls while **Julie Gorka** (piano), **Becky Ross** (fiddle), and **Karin Loya** (cello) provide the music
- 10 **Paul Oorts** (mandolin), **Colleen Reed** (flute) and **Liz Donaldson** (piano) play music for the calling of **Tom Spilsbury**
- 17 **Diane Schmit** calls to the music of **Howard Markham** (concertina), **Liz Donaldson** (piano), and **Jeff Steinberg** (fiddle)
- 24 **Christmas Eve - no dance**
- 31 **New Year's Eve English Ball** see below.

FSGW Gala Dance**Historic Adelphi Mill, MD**

Gala New Year's Eve English Dance

Wednesday, December 31 • 6:30 pm to 12:45am

Featuring a potpourri of callers leading English country dances, waltzes and couple dances. Music by **Becky Ross** (fiddle), **Kendall Rogers** (piano) and **Bruce Edwards** (bassoon and concertina). Decorating and set-up 6:30, potluck supper 7:30, dancing 8:30-12:45, midnight toast. **ADVANCE REGISTRATION NECESSARY — SPACE IS LIMITED.** For info or to help call **Norm Bernhardt at 301-320-2469** or **Karla or Bob Farrall at 301-577-5018**. Registration forms in the *November FSGW Newsletter* or download from www.fsgw.org.

FSGW Co-Sponsored International Dance**Glen Echo, MD**

Glen Echo International Folkdancers

Thursdays • 7:30 to 10:45 pm

The **Glen Echo International Folkdancers** meet Thursday nights at **the Church of the Redeemer, 6201 Dunrobbin Drive** (next to the shopping center across the street from Glen Echo Park), Lesson at 7:30. Request dancing from 9-10:45. Mostly recorded music. No partner or experience necessary, but wear comfortable clothing and soft-soled shoes. **Admission \$5.** Co-sponsored by FSGW. **Info: Jamie at 301-320-7099 or dancingplanet@erols.com.**



Other FSGW Events

FSGW Open Sing • Silver Spring, MD Friday, December 5th • 8:30 pm

Come to the FSGW Open Sing on the first Friday of each month. We take turns doing music that's connected (however vaguely) to a given topic. Sing, play, request a song, or just listen. People new to the Sing may present any song regardless of topic. Donations of refreshments are welcome, and singing usually lasts until 11:45pm. The December Sing will be at the home of **Susan Clark** in downtown Silver Spring, MD. This month's topic is "Gathering". Sing songs about a gathering of family and friends, the harvest, the gathering storm, saving for a rainy day, or paying the taxman. Just be sure to come and join in the singing, playing, and all around merriment. **Call Susan at 301-565-5126 or e-mail songsue@aol.com for directions/info.**

FSGW Gospel Sing • Bethesda, MD Sunday, December 14 • 4-8 pm

Gospel sings are held the second Sunday of every month at various homes. Singing starts at 4pm and breaks for a covered dish supper at 6pm with more singing after supper. Everyone is welcome! The December Gospel Sing will be at the home of **Wendy Keats** in Bethesda, MD. **Info/directions: 301-493-5546.**

Storyswap • Alexandria, VA Saturday, December 13 • 7:30 pm

Free. Storytellers and listeners are invited to the home of **Debbie Griffin** for an evening of shared tales. Potluck snacks. **Info/directions/rsvp: 703-379-2251.**

FSGW Sacred Harp Singing • Arlington, VA Thursday, January 1, 2004 • 3-8pm

St. Peter's Episcopal Church, 4250 North Glebe Rd. Instead of a 4th-Sunday singing in December, the annual New Year's Day Sacred Harp Singing will be held for the second time at St. Peter's in Arlington, our regular monthly location. In addition to the 1991 *Sacred Harp* (loaner tunebooks are available), we may also sing from the *American Christmas Harp*. This singing begins an hour earlier than usual and attracts participation from a wide region. Potluck at 6 pm followed by more singing. **Info: 301-229-8534**

Directions: St. Peter's is one-half mile south of Chain Bridge, on the west side of Glebe Road (crossing from Washington, on your right, from Virginia, on your left). The church is not visible from Glebe Rd. Turn on Tazewell St. to reach the parking lot.



FSGW VOLUNTEER OPPORTUNITIES ABOUND!!!

FSGW Mini-Fest

If your organizational talents need a creative outlet, consider becoming the **Mini-Fest Coordinator!!** True to tradition, this family-friendly event will include dancing, workshops, storytellers, performer showcases and a wonderful opportunity to visit friends and neighbors as we celebrate every sort of local talent. The Mini-Fest is scheduled for **Saturday, February 7 at Takoma Park Middle School, 7611 Piney Branch Rd. in Silver Spring, MD.** If you're interested, contact **Anne Sergeant at 301-270-4553 or president@fsgw.org.**

FSGW NEEDS VOLUNTEERS FOR THE CHRISTMAS REVELS

FSGW will have a table at the **Revels** this year at Lisner Auditorium. Volunteers are needed to help staff the table. The dates are December 5, 6, 7, 12, 13, 14. **If interested, please call our Membership Chair, Lynn Pastore, at 301-577-0745 or e-mail her at lynnpastore@yahoo.com.**

PUBLICITY GUERRILLAS NEEDED FOR FSGW

If we e-mailed you a couple of flyers every month for concerts or special events, could you print out a few copies and post them at work, your local library, music store or other likely folkie venue? **If you can open and print out an MS Word attachment and are willing to post flyers, please e-mail publicity@fsgw.org.** There is no obligation on your part, and every little bit of publicity helps. Snail mail delivery is available as well. Have questions? E-mail them to **publicity@fsgw.org or call Susan Clark, Publicity Chair, at 301-565-5126.**

This just in from our Dance Chair!

New Year's Eve Contra Ball

Dance in the New Year at the Contra Ball at the charming Woman's Club of Chevy Chase (circa 1938). **Bill Olsen** calls to music by *Shadrack's Delight*: **Laura Lengnick** (fiddle) **Mara Shea** (fiddle) and **Roger Gold** (guitar and foot percussion). Grand March starts at 8 pm, we dance until 12:15 am, and we'll share a midnight toast to welcome the New Year. To download the flyer and registration form go to www.fsgw.org and click on **Contra Ball**.

Chesapeake Dance Weekend



Can't find last month's newsletter, you know, the one with the **Chesapeake Dance Weekend** flyer? Dude, get it together, cause come **April 16-18**, you'll be, like, SO wishin' you were out at Camp Letts dancin' to **George Marshall**, **Ron Buchanan**, **Flapjack**, **The Bominators**, and **Charivari**. Give up on that hopeless search through your paper clutter, just go to www.fsgw.org, click on Chesapeake Dance Weekend, print out a new flyer, and send it in, pronto.

William Bruce Olson

1930-2003

The Folklore Society recently lost a friend and longtime member in **William Bruce Olson**, who died October 31, 2003. He was 73 years old.

Bruce was an amazing man — brilliant, determined and thorough in what he did, who shared his music research without reservation. He had a PhD in physical chemistry, specializing in infra-red and molecular spectroscopy.

His interest in folk music started in the 1950's. To his regret he was not a singer. He bought a dulcimer, thinking it might help, but gave it up and went back to listening, researching and educating.

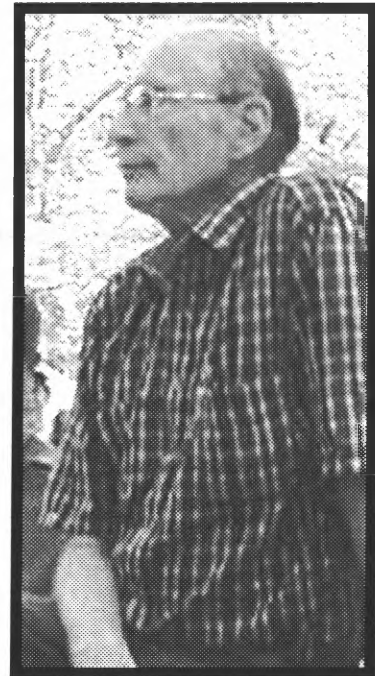
Bruce was a willing volunteer for many FSGW events, helping out even when it meant missing a lot of the music he so loved. For years, he set up the room and the refreshments and monitored the door for open sings at the Ethical Society, and for the first three years of the Washington Folk Festival, he directed traffic in the parking lot.

Bruce earned an international reputation as a researcher, scouring primary sources for clues to the origins of traditional songs. He provided background information to the **Boarding Party** and **Stephen Wade** among others. He took special pleasure in having earned access to collections such as the Folger Shakespeare Library.

He published his sources and findings on the Internet and was a regular and respected contributor to on-line forums. Often a stranger's query would produce a lengthy reply culled from his large database. On one forum he posted seldom, and anonymously. Sometimes when an anonymous "Guest" replied in depth to some arcane question, people simply replied, "Thanks, Bruce."

If he thought you cared, he would try his best to add to your knowledge about a song (sometimes in detail that exceeded your attention span.) Later you might receive an additional packet in the mail.

Bruce's research can be seen at <http://users.erols.com/olsonw/>. Arrangements are being made to preserve and, if possible, continue to update it. A *Curriculum Vitae* listing his many scientific and folkloric publications is at <http://users.erols.com/olsonw/VITA.TXT>. Many FSGW members have fond memories of Bruce Olson (some of trying to gracefully get away when he was determined to relate one more fact about an old song or tune.) Mostly we remember a generous, brilliant man who was focused, unswerving and dedicated to his passions. We are all beneficiaries of that dedication.



—Bill Day & Rita Ferrara

Concerts & Concert Series

Saturdays:

Rick & Audrey appearing with Cletus Kennelly & Lori Kelley

Saturday, December 6 • 8-11pm

At the New Deal Cafe, 113 Centerway, Roosevelt Center, Greenbelt, MD. Information, call 301-474-5642 or visit newdealcafe@greenbelt.com.

D.C. Labor Chorus • Silver Spring, MD

Saturday, December 6 • 7:30pm

An "Evening of Favorite and Sacred Songs." The concert will feature sing-alongs, songs from many cultures and traditions, and personal favorites of chorus members. Children welcome. The D.C. Labor Chorus is composed of singers from many unions in the D.C. area. Admission is free, and contributions will be welcome at the door. At the auditorium of the George Meany Center for Labor Studies, 10000 New Hampshire Ave., Silver Spring, MD. Info Elise Bryant 301-431-5408.

Sundays:

Washington Saengerbund - Lovettsville, VA

Sunday, December 7 • 5pm

Traditional German Christmas Concert by the **Washington Saengerbund** at Lovettsville, Virginia's historic New Jerusalem Lutheran Church. Schubert's Deutsche Messe and traditional German Christmas carols sung by Washington's oldest German organization, **Michael O'Brien**, conductor, and **Robert I. Jones**, organ. Suggested donation \$15. Reception following concert. Info: www.saengerbund.org RSVP mpzapf@aol.com or 540-822-5788.

Washington Saengerbund - Washington, DC

Sunday, December 14 • 3pm

Washington Saengerbund Christmas Concert at the United Church, 20th & G Streets, NW, Washington, DC. **Michael O'Brien**, conductor. With instrumental music by the **Alte Kameraden Blaskapelle**. An offering is taken to help the needy. Following the concert, refreshments are served in the church basement social hall. Info: www.saengerbund.org

Steven Gellman • Vienna, VA

Sunday, December 14 • 7pm

Doors open at 6pm. CD Release Concert for **Steven Gellman's** new CD *Love Loss Longing*. At Jammin' Java, 27 Maple Ave E., Vienna, VA 22180. A full band performance! Tickets are \$12 in advance & \$15 at the door. Please call 703-255-1566, Ext. 8 for reservations.

¡NAVIDAD! A Christmas Tale • Bethesda, MD

Sunday, December 14 • 5pm

Much loved by **Coral Cantigas** fans, this year's family Christmas concert will feature the **Children's Chorus of Silver Spring**, under the direction of **Louis Persic**, in the recounting of the Christmas story in traditional Latin American style. Enjoy the sounds of *cuatro*, *giro*, guitar, and maracas and join in a lively sing-along. In Spanish with bilingual concert program notes and texts. For tickets/information, call 301-424-8296 or www.cantigas.org. At Bradley Hills Presbyterian Church, 6601 Bradley Blvd.

Saturday & Sunday:

Maggie's Music Christmas Concerts • VA & MD

Sunday, December 14 • 7:30pm at the Birchmere, Alexandria, VA. 703-549-7500 or www.birchmere.com.

Saturday, December 20 • 8pm and Sunday December 21 • 3pm at Blackrock Center in Germantown, MD 301-528-2260 or www.blackrockcenter.org

Wayfaring Strangers CD Release Concert • Arlington VA

Saturday, December 20 • 8pm

Fronted by visionary violinist **Matt Glaser**, who chairs the Berklee College of Music's string department, **the Wayfaring Strangers** seek to find spiritual common ground between different styles of music, including jazz, bluegrass, folk, Klezmer, and Celtic. Joining Glaser are banjo legend **Tony Trischka**, vocalists **Tracy Bonham**, **Ruth Ungar** and **Aoife O'Donovan**, virtuoso pianist **Laszlo Gardony**, percussionist **Jamey Haddad**, guitar and mandolin player **John McGann**, and bassist **Jim Whitney**

Rosslyn Spectrum Theatre, 1611 N. Kent St, Arlington, VA. Tickets \$18. Info: **World Music & Dance Institute** 301-320-8255 or glen.echo@erols.com

CONCERT SERIES

Sundays:

Moore Music (In The House) Concert • Rockville, MD

Sunday, December 7 • 7:30pm

Mark Erelli, plus *Aura and Avril*. Reservations: 301-309-0983 <http://www.moore-music.org>



Concert & Concert Series *continued*

Mondays:

Institute of Musical Traditions (IMT) Series

• Silver Spring, MD

Mondays • 8pm unless otherwise noted

All concerts are at Unitarian Universalist Church of Silver Spring, Md., 10309 New Hampshire Avenue unless otherwise noted. Ticket Info 301.754.3611 or e-mail imtfolk@erols.com

December

- 1 Acoustic night: **Ruthie & the Wrangles Grandsons**. \$12 adv/\$14 door.
- 6 **Cathy Fink & Marcy Marxer's 18th Annual Holiday Family concert with special guest Dinorock**. Show times 11am and 1:30pm. Note this is a Saturday. This concert takes place at the Takoma Theater, 6833 4th St NW, Washington, DC. \$8 adv/\$10 door. (A ticket is required for everyone attending this concert, regardless of age).
- 8 **Al Petteway, Amy White & Robin Bullock Holiday Concert**. \$14adv/\$17 door
- 15 **Seamus Kennedy and Ed Miller**. \$12 adv/\$15 door.

Wednesdays:

Vic's Music Corner • Rockville, MD

Wednesdays • 8pm

Vic's is dedicated to introducing acoustic singer/songwriters from across the country to the greater Washington area. At O'Brien's, 387 E. Gude Dr., Rockville, MD. Smoke-free.

For reservations email reba.heyman@verizon.net or call 301-984-1897. Directions & Information: <http://www.victorheyman.com>

December

- 3 **Terry Gonda, Jen Cass, and LisaBeth Weber** (\$12 adv/\$15 door). Special concert/triple CD release.
- 10 **Artisan** Winter Show (\$15 adv/18 door) - End of season finale.

Baldwin's Station • Sykesville, MD

Wednesdays • 8 pm unless otherwise noted

7618 Main St., Sykesville. Productions by Uptown Concerts, a non-profit organization affiliated with the North American Folk Alliance. Info: joycesica@aol.com or Joyce R. Sica, 410-922-5210. Tickets/reservations: 410-795-1041.

December

- 3 **Robin Bullock**
- 10 **Mike Cross**
- 16 & 17 **Connemara** (Note: Tuesday and Wednesday)

Fridays:

The Cellar Stage at St. John's • Baltimore, MD

Fridays • 8pm

Co-sponsored by Uptown Concerts and St. John's of Hamilton, at the United Methodist Church, 5315 Harford Rd. Access the large parking lot from Gibbons Avenue. Info: Joyce R. Sica, 410-922-5210 or 410-521-9099; or uptownconcerts@aol.com or <http://www.charm.net/~dirtylin/uptown.html>

December

- 5 **Lisa Moscatiello & Rosie Shipley**
- 12 An Album Release Party with **Grace Griffith**
- 19 **A Celtic Christmas** with **Maggie Sansone & Company**

January

- 9 **Bill Staines**

Saturdays:

Common Ground on the Hill Concert Series

• Westminster, MD

Saturday, December 6 • 8pm

Fourth Annual **Walt Michael & Company Holiday Concert**. Also featuring fiddlers **Evan Stover** (formerly of *Fiddle Fever*, *David Bromberg Band*, *Bottle Hill*), **Alexander Mitchell**, and bassist **Tom Wetmore**. At the Carroll Arts Theater, 91 West Main St., Westminster, MD. Info: 410-848-8962 or <http://www.carr.lib.md.us/arts/>; www.common-groundonthehill.org

Songs that Matter Music Showcase • Columbia, MD

Saturday, December 20 • 7-10 pm

Joe Isaacs performs in and runs the *Songs That Matter Showcase* featuring some of the best local Maryland music, including **Adam Day**, **Joe Hickey**, **Sheila Eastman**, and **Andre Cutaire**. Location is Mad City Café, 10801 Hickory Ridge Rd. This show is free.

Info: Joe Isaacs 443-259-0257 or jcisaacs@star-power.net or www.josephisaacs.com



Jams/Open Mics/Audience Participation

Listed by day of the week

Sundays:

Scottish Traditional Music Jam • Wheaton, MD
December 7 • 3-6 pm

Scottish traditional music jam, first Sundays, Royal Mile Pub, 2407 Price Avenue. Musicians welcome. Info: John Ward at 301-627-2770 or fidhle@iamdigex.net

CABOMA Jam • Arlington, VA
December 14 and 28 • 2 pm

Capitol Area Bluegrass and Old-Time Music Association (CABOMA) holds jams the 2nd and 4th Sundays of each month. Lyon Park Community Center, corner of N. Filmore and Pershing, Arlington, VA. Info: Dave at 301-274-3441.

Irish Traditional Music Seisiun • Wheaton, MD
December 28 • 7-10 pm

Fourth Sundays, Royal Mile Pub, 2407 Price Avenue, Wheaton, MD. Seisiun musicians welcome. Info: Dennis at 301-422-6550.

Mondays:

Jammin' Java • Vienna, VA
Mondays • 7:30-10:30 pm

Two songs or 8 minutes total. Free, open to all. 231 Maple Ave. East. Sign up at 7; show starts at 7:30.

Info: Steve Key at 202-244-7524 or stevekey@aol.com or 703-255-1566.

Tuesdays:

Sea Chantey Open Pub Sing • Wheaton, MD
December 2 • 8 pm

The Ship's Company chanteymen host an open mike sea chantey on the 1st Tuesday of each month at 8 pm, Royal Mile Pub, 2407 Price Ave., Wheaton, MD. No cover/minimum; arrive early for a table. Participation encouraged but not mandatory. Requests are honored if possible. Mostly a capella but instruments are welcome. Info: Myron Peterson at shipscompany@hotmail.com

Folk Club of Herndon-Reston • Herndon, VA
Tuesdays • 7:30-9:45 pm

Tortilla Factory, 648 Elden St., Herndon, VA. Open mic format. Each performer gets 12 minutes (including setup time). \$1 donation. 2nd Tuesday includes a 25-minute member showcase. Smoke-free environment. Info: 703-435-2402.



Wednesdays:

Laurel Jam Session • Laurel, MD
2nd and 4th Wednesdays • 7-10 pm

Adults who enjoy acoustic music are invited to come and sing, play, or listen to folk, bluegrass, and other traditional music in an informal setting. Phelps Senior Center, 701 Montgomery St. Info: 301-776-6168 during business hours.

Open Mic Nite • Alexandria, VA
December 17 • 7 pm

St. Elmos Coffee Pub, 2300 Mt. Vernon Ave. Third Wednesdays, hosted by Michelle Swan. Two songs each. All are welcome. Signup starts at 7. Info: 703-739-9268 or mswan64@yahoo.com.

Thursdays:

American Balalaika Symphony, Open Rehearsals • Arlington, VA
Thursdays • 8 pm

Fiddle, mandolin, and guitar experience translates easily to the balalaika and domra. Enthusiastic beginners welcome! Come play Russian and East European folk and classical music. Most Thursdays at The Church of the Covenant, 2666 Military Rd., Arlington. Info: John at JohnK@balalaika.biz or 703-837-9083.

Fridays:

Dupont Music Circle • Arlington, VA
Friday, December 5 and ? • 8pm

Since 1983 the informal Dupont Music Circle has met to sing and play English, Scottish, Welsh, Irish, Quebecois, American, and other traditional music just for fun. Uncertain by Newsletter deadline whether second December meeting will be on the 12th, 19th, or 26th, and where; so call to confirm. Info: Liz at 703-658-0957.

Glen Echo Open Band • Glen Echo, MD
December 12 • 8:30-11:30 pm

The fabulous Glen Echo Open Band plays for the second Friday contra dance. All instruments and levels of ability are welcome. Info: fnd.folkdancer.com.

Saturdays:

Archie Edwards Blues Jam • Washington, DC
Saturdays • 1 pm

The Archie Edwards Blues Heritage Foundation holds an acoustic blues jam almost every Saturday afternoon, starting about 1 pm. All skill levels welcome. 1007 Bunkerhill Rd., NE, Washington, DC. Info/confirmation: 202-526-7539.

Jams/Audience Participation etc. *continued***Hammer Dulcimer Jam • McLean, VA**
Saturday, December 20 • 1:30-4:30

Hammer dulcimer players meet bimonthly at the Dolley Madison Library to swap tunes and play together. Other acoustic instruments welcome. **Info: Ellie at 703-578-3106, hdjam@holsopple.com or <http://pages.prodigy.net/holsopple>.**

**Workshops, Weekends, Festivals, & Special Events****Vocal Performance Workshop * Vienna, VA**
Saturday, December 13 • 10am-1pm

"What Every Songwriter Should Know About Vocal Performance" with **Verlette Simon**. Presented by Songwriters' Association of Washington and Ubervox at Jammin' Java: 227 Maple Ave. E. Vienna, VA Cost \$35 (\$25 for SAW/Ubervox members), cost increases to \$40/\$30 after 12/1/03. Pay at the door or use registration form at www.saw.org to preregister. The workshop builds on an earlier presentation by Verlette, but prior attendance is not a prerequisite. Learn how to preserve your voice, improve vocal quality and control, and enhance breath control to optimize vocal performance. **Info: 301-654-8434.**

Change Ringing with Handbells • Frederick, MD
Tuesday, December 16 • 7 pm

Change ringing creates beautiful aural mathematical patterns, rather than melodies. Originally bellringers used handbells for practice, instead of using full size bells in drafty bell towers. Beginners and "ringers" welcome. If you can count to 8 and have a sense of humor, you might enjoy this. **Info: Jenny at 301-371-4312 or pi@xecu.net.**

Contradancers Delight Holiday
• Near Morgantown, WV**December 26-31**

At Lakeview Resort. Great music and dancing in a resort setting at affordable rates. Bands: **The Elftones** and **New Balance**. Callers: **Robert Cromartie** and **Beth Molaro**. For info: contact Warren Doyle at wdoyle@mountain.org or 336-957-9979.

Terpsichore's Holiday • Cumberland MD
December 27 - January 1

Dance in the New Year with a celebration of American dance and folk music. In addition to contras

Storytelling**Speak Easy - Washington Storytellers Theatre • DC**
Tuesday, December 9 • 8pm

Monthly storytelling series showcasing local storytellers from novice to professional. This month's theme: "All Wrapped Up: Stories About the Giving and Receiving of Gifts." All Speak Easys take place at HR-57, 1610 14th St, NW. Admission \$5, plus \$3 per person corking fee if you BYOB. Doors open at 7:30. HR-57 sells beer, wine and some food. Sign up for the open mic when you arrive. Open mic stories are strictly limited to 7 minutes and must incorporate the theme. **Info: www.washingtonstorytellers.org**

and squares, there will be classes in waltz, clogging, Irish socials, couples, rapper and English. There is also an excellent children's program. Staff includes **Susan Taylor, Gaye Fifer, Laura Robertson, Marianne O'Daugherty, Diane Ortner, Steve Hickman, John Devine, and Marty Taylor**. Our celebration will be held at Rocky Gap, Maryland's only 4 star resort.

Info: Jeff Kenton: Jeff Kenton 301-587-1525 (jkenton@verizon.net) or Bob Mathis 301-589-7539 (talibob@starpower.net) or www.terpsichoreholiday.com

19th Annual Benefit Weekend • Alexandria, VA
Friday and Saturday, January 16-17, 2004

Tickets are now on sale for the 19th Annual WFMA Benefit Weekend at the Birchmere. Performers include **Christine Lavin, John Gorka, Schooner Fare, Steve Gillette & Cindy Mangsen, Priscilla Herdman, and Bill Staines**. The Friday night show will feature a tribute to the late Stan Rogers. At this time ticket orders are being accepted by mail only. (The ticket order form can be found at <http://wfma.net/contkf.htm>)

Details at <http://wfma.net/con04.htm>

Ski-Dance Weekend • PA
February 13-16, 2004

Join us in the Laurel Highlands of Pennsylvania for cross country skiing (downhill skiing available nearby), sledding, contra dancing, music, singing and lots of fun outdoors and indoors in a beautiful rustic setting. Camp Harmony has over 100 acres for cross-country skiing. Music provided by **Dave Wiesler** (piano & guitar), **Laura Light** (fiddle), **George Paul** (piano, drums, fiddle). Contra dances called by **Ron Buchanan & Bob Mathis**.

For info go to www.skidance.com or contact **Bob Mathis at 301-589-7539, talibob@starpower.net or Eliot at eliotapplestein@verizon.net**

Local Folkal

The FSGW Newsletter provides a listing of local performers who appear at small venues. Send your name or band name, very brief description of your musical style, and web address, e-mail, and/or phone number to the Newsletter Editor.

SOLO PERFORMERS

- BONNEVILLE, JOHNNY** johnnybonneville@hotmail.com or 1-888-961-7647. Duet w/ Fiddlin' Phil
- BREESE, JERRY** <http://www.shenandoahacoustics.com/jbreesee>
- BROWN, MARY BYRD.**
<http://www.geocities.com/SunsetStrip/Stage/8829/>
- COOK, JUDY** judy@ceimd.com or <http://www.ceimd.com/folksing.htm> or 301-776-4314
- CLYBURN, CHARLES H.** www.clyburncharles@hotmail.com 301-483-0743 African and African-American folktale storyteller
- CROSS, RACHEL** <http://www.rachelcross.com> folk/world music performer
- DURFOR, CHUCK** <http://hometown.aol.com/cdurfor> Fingerstyle guitar.
- EHRIG, GRETA** singer-songwriter-poet LivePoetry31@aol.com
- GELLMAN, STEVEN** Hiddenpoet@aol.com or www.HiddenPoet.com
- HICKERSON, JOE** www.joehickerson.com, jhick@starpower.net or 301-270-1107 Vintage paleo-acoustic folksinger
- HOAG, ANDREA** <http://www.andreahoag.com> or 301-565-2777 Fiddler, singer, wordsmith.
- ISAACS, JOE** www.josephisaaacs.com or jcsaacs@starpower.net Contemporary folk
- KAMINSKY, RAY** <http://www.earbuzz.com/raykaminsky> Piedmont and Delta blues
- KENNELLY, CLETUS** www.cletuskennelly.com
- KEY, STEVE** www.stevekey.com, stevekey@aol.com or 202-244-7524 Singer/songwriter, & concert presenter
- MAGILL, NANCY** mizmagill@aol.com. 301-951-6242 Jazziblufolktunes
- MARKLEY, LENA AND SANFORD** <http://www.lena-and-sanford.com>
- McKNIGHT, ANDREW** <http://songs.com/andrew>
- McVEY, JOHN** <http://www.johnmcvey.com>
- MUIR, CHRISTINA** <http://songs.com/hotsoup>
- PARSONS, BILL** bill@songs.com or www.billparsons.com
- PRASADA-RAO, TOM** <http://songs.com/tp>
- ROSS, GARTH** <http://www.garthross.com>
- SCHWARTZ, ERIC** <http://www.eric schwartz.com>
- SWAN, MICHELLE** <http://www.michelleswan.com>
Contemporary folk singer/songwriter
- TAYLOR, LISA** <http://www.shenandoahacoustics.com/ltaylor>
- TWOHY, MARY SUE** www.marysuetwohy.com
- TYSON, HERB** <http://www.herbtyson.com>
- WILCOX, DOUG ALAN** www.dougalanwilcox.com Contemporary americana, acoustic pop.
- WILLIAMS, ROGER** acoustic folk, country, old-timey.
wilmacd@starpower.net 202-362-5568.

GROUPS


- ALEXANDRIA KLEZTET** kleztet@aol.com or <http://members.aol.com/kleztet/> or 410-521-0616. Traditional and innovative klezmer.
- BARRELHOUSE BRAWL** jbai@loc.gov or 202-544-4439. Primitive New Orleans-style jazz and hot blues
- BILL KIRCHEN & TOO MUCH FUN** www.billkirchen.com Roots rock and rockabilly.
- BLUE MOON COWGIRLS** kecollins@starpower.net or <http://www.blue-mooncowgirls.com> or 301-270-2586. Acoustic early country
- BLUESWORKS** www.bluesworksband.biz 301-464-6275 or bluesworks@aol.com Blues 'n Boogie - traditional and original
- BOG WANDERERS CEILI BAND** jessewinch@hotmail.com or 301-589-7537. Five-piece traditional Irish concert and dance band.
- BOTTOMLAND** bottomland@hotmail.com or www.bottomland.org or 301-587-1198
- BOYS' NIGHT OUT.** wilmacd@starpower.net 202-362-5568 or fjnebn@erols.com 703-451-4785. Acoustic guitar, mandolin, bass/bluegrass, old-timey, Irish, folk.
- CORAL CANTIGAS** www.cantigas.org or 301-816-2314 Spanish/Hispanic choral music.
- HOT SOUP** hotsoup@pobox.com or www.hotsoup trio.com Harmony and laughter.
- JOLIE ROUGE CAJUN BAND** jolie_rouge@hotmail.com or 703-323-7895. Traditional Cajun and Creole dance music.
- J.P. McDERMOTT & WESTERN BOP** www.westernbop.com, info@westernbop.com or 301-585-3259. Red-Hot Rockabilly & Vintage Honky Tonk.
- KLEZCENTRICITY** www.klezcentricity.com or djg@well.com or 301-589-4847 Yiddish-American music.
- KREWE OF RENEGADES** KreweRC@earthlink.net or www.kreweofrenegades.com or 301-942-5217 New Orleans R&B, funk, and soul.
- LIBERTY DAWNE AND THE OVERHAULERS** Libertydawne@erols.com Old-fangled country music.
- OKLAHOMA TWISTERS** www.oktwisters.com or okt@pressroom.com or 703-536-9839. Western Swing.
- ORANGE LINE SPECIAL** orangelinespecial@yahoo.com or 703-966-8442.
- RAZZ'M-JAZZ'M** jdrouse@erols.com or 703-525-3786. Washboard/jug band.
- SEDENKA** Katya@partan.com Katya Partan 301-270-4175 Balkan folk songs.
- SQUEEZE BAYOU** kecollins@starpower.net or www.squeezebayou.com or 301-270-2586. Traditional Cajun dance music.
- THE URBAN LEGENDS** www.theurbanlegends.com or urban.legends@pressroom.com. Traditional and contemporary acoustic music.



December

Sunday	Monday	Tuesday	Wednesday	Thursday
	<p>1</p> <p>7 Bluemont Morris Dancers 7:30 Bethesda Intl Dance 7:30 Jammin' Java Open Mic 8 Baltimore English Country 8 Bethesda Israeli Dance 8 Bethesda Scottish Country 8 IMT Concert</p>	<p>2</p> <p>7:30 Herndon-Reston Folk Club 7:30 Silver Spring Israeli Dance 8 Arlington Intl Dance 8 Greenbelt Scottish Country 8 Silver Spring Squares 8 Sea Chantey Open Sing</p>	<p>3</p> <p>7:30 Rock Creek Morris Women 7:30 Alexandria Scottish Country 8 FSGW ENGLISH COUNTRY 8 Baltimore Contra (Lovely Ln) 8 Baldwin's Station Concert 8 Vic's Music Corner 8 Columbia Intl Dance 8:15 Israeli Dancing/Potomac</p>	<p>4</p> <p>7:30 FSGW ENGLISH COUNTRY 8 Baltimore English Country 8 Bethesda Israeli Dance 8 Bethesda Scottish Country 8 IMT Concert</p>
<p>7</p> <p>3 Scottish Trad. Music Jam 3 Glen Echo Waltz 4 Alpine Dancers 7:30 FSGW SUNDAY CONTRA SQUARES TED HODAPP CALLS TO CABARET SAUVIGNON 7:30 Moore House Concert 7:30 Scandinavian Holiday Dance & Luciafest</p>	<p>8</p> <p>7 Bluemont Morris 7:30 Bethesda Intl Folk Dance 7:30 Circle Dances/Bethesda 7:30 Jammin' Java Open Mic 8 IMT Concert 8 Baltimore English Country 8 Bethesda Israeli Dance 8 Bethesda Scottish Country</p>	<p>9</p> <p>7:30 Herndon-Reston Folk Club 7:30 Silver Spring Israeli Dance 7:45 Herndon English Country 8 SpeakEasy Storytelling 8 Arlington Intl Dance 8 Greenbelt Scottish Country 8 Silver Spring Squares</p>	<p>10</p> <p>7 Laurel Jam Session 8 Rock Creek Morris Women 7:30 Alexandria Scottish Country 8 FSGW ENGLISH COUNTRY 8 Baltimore Contra (Lovely Ln) 8 Baldwin's Station Concert 8 Columbia Intl Dance 8 Vic's Music Corner 8:15 Israeli Dancing/Potomac</p> <p>FSGW Newsletter Deadline</p>	<p>11</p> <p>7:30 FSGW ENGLISH COUNTRY 8 Baltimore English Country 8 Bethesda Israeli Dance 8 Bethesda Scottish Country 8 IMT Concert</p>
<p>14</p> <p>2 CABOMA Jam 3:30 IMT/FSGW FAMILY DANCE 3 Saengerbund Concert 4 FSGW GOSPEL SING 5 Coral Cantigas Concert 7 Steven Gellman Concert 7 Christmas Ball / Meridian House 7:30 Maggie's Music/Birchmere 7:30 FSGW SUNDAY CONTRA SQUARES BEVERLY SMITH CALLS TO THE OLD TIME WALL OF SOUND</p>	<p>15</p> <p>7 Bluemont Morris Dancers 7:30 Bethesda Intl Dance 7:30 Circle Dances/Bethesda 7:30 Jammin' Java Open Mic 8 IMT Concert 8 Bethesda Israeli Dance 8 Bethesda Scottish Country</p>	<p>16</p> <p>7 Handbells 7:30 Herndon-Reston Folk Club 7:30 Silver Spring Israeli Dance 8 Baldwin's Station Concert 8 Arlington Intl Dance 8 Greenbelt Scottish Country 8 Silver Spring Squares</p>	<p>17</p> <p>7 St. Elmo's Open Mic 7:30 Rock Creek Morris Women 7:30 Alexandria Scottish Country 8 FSGW ENGLISH COUNTRY 8 Baltimore Contra (Lovely Ln) 8 Baldwin's Station Concert 8 Columbia Intl Folk Dance 8:15 Israeli Dancing/Potomac</p>	<p>18</p> <p>7:30 FSGW ENGLISH COUNTRY 8 Baltimore English Country 8 Bethesda Israeli Dance 8 Bethesda Scottish Country 8 IMT Concert</p>
<p>21</p> <p>3 Glen Echo Waltz 3 Maggie's Music Concert 7:30 FSGW SUNDAY CONTRA SQUARES SHAWN BRENNEMAN CALLS TO THE UNGERMONGERS 8 IMT Concert</p>	<p>22</p> <p>7 Bluemont Morris 7:30 Bethesda Intl Folk Dance 7:30 Jammin' Java Open Mic 8 Baltimore English Country 8 Bethesda Israeli Dance 8 Bethesda Scottish Country</p>	<p>23</p> <p>7:30 Herndon-Reston Folk Club 7:30 Silver Spring Israeli Dance 8 Arlington Intl Dance 8 Greenbelt Scottish Country 8 Silver Spring Squares</p>	<p>24 Christmas Eve</p> <p>7 Laurel Jam Session 8 Columbia Intl Folk Dance 8:15 Israeli Dancing/Potomac</p>	<p>25</p> <p>7:30 FSGW ENGLISH COUNTRY 8 Baltimore English Country 8 Bethesda Israeli Dance 8 Bethesda Scottish Country 8 IMT Concert</p>
<p>28</p> <p>2 CABOMA Jam 3 Glen Echo Cajun Dance 3 Irish Seisiun 7:30 FSGW SUNDAY CONTRA SQUARES CALLER TBA WITH CONTRAZZ</p>	<p>29</p> <p>7 Bluemont Morris 7:30 Bethesda Intl Folk Dance 7:30 Jammin' Java Open Mic 8 Baltimore English Country 8 Bethesda Israeli Dance 8 Bethesda Scottish Country</p>	<p>30</p> <p>7:30 Herndon-Reston Folk Club 7:45 Herndon English Country 8 Arlington Intl Dance 8 Greenbelt Scottish Country 8 Silver Spring Squares</p>	<p>31 New Year's Eve</p> <p>6:30 FSGW NEW YEAR'S EVE ENGLISH COUNTRY DANCE 8 FSGW NEW YEAR'S EVE CONTRA DANCE</p>	<p>Jan</p> <p>3 FSGW ENGLISH COUNTRY 8 Baltimore English Country 8 Bethesda Israeli Dance 8 Bethesda Scottish Country 8 IMT Concert</p>

2003

Thursday	Friday	Saturday
<p>FSGW INTL FOLKDANCE Chevy Chase Intl Folk Dance Circle Dances/Arlington Mt. Vernon Intl Folk Dance Loggy Bottom Morris Men Haldwin's Station Concert Amer. Balalaika Symphony</p>	<p>5 8 Dupont Music Circle 8:30 FSGW OPEN SING 8:30 Friday Night Contra 8:30 Greenbelt Intl Folk Dance</p>	<p>6 11 am & 1:30 IMT Concert 1 Archie Edwards Blues Jam 7:30 DC Labor Chorus Concert 8 IMT Concert 8 Fall Dance w/Edelweiss Band 9 WSDC Glen Echo Swing Dance 9 Catonsville Zydeco Dance</p>
<p>FSGW INTL FOLKDANCE Mt. Vernon Intl Folk Dance Circle Dances/Arlington Loggy Bottom Morris Men Amer. Balalaika Symphony</p>	<p>12 8:30 Friday Night Contra 8:30 Glen Echo Open Band 8:30 Greenbelt Intl Folk Dance</p>	<p>13 9am Vocal Performance Wkshp 1 Archie Edwards Blues Jam 7:30 FSGW STORYSWAP 7:45 Circle Dances/Burke 8 FSGW CONCERT CHRIS ROSSER 8 Baltimore Contra (St. Mark's) 8 Silver Spring English Country 8 Fairfax Celli 8:15 Greenbelt Israeli Oldies</p>
<p>FSGW INTL FOLKDANCE Chevy Chase Intl Folk Dance Amer. Balalaika Symphony Mt. Vernon Intl Folk Dance Loggy Bottom Morris Men</p>	<p>19 8:30 Friday Night Contra 8:30 Greenbelt Intl Folk Dance First Night of Hanukkah </p>	<p>20 1 Archie Edwards Blues Jam 1:30 Hammer Dulcimer Jam 7:30 Scandinavian Holiday Party 8 Wayfaring Strangers Concert 8 Herndon English Dance 8 Maggie's Music Concert 8 FSGW MONTHLY FREE PROGRAM NEXTRADITION</p>
<p>Christmas Day FSGW INTL FOLKDANCE Chevy Chase Intl Folk Dance Amer. Balalaika Symphony</p>	<p>26 8:30 Friday Night Contra 8:30 Greenbelt Intl Folk Dance</p>	<p>27 1 Archie Edwards Blues Jam 8 Frederick Contra</p>
<p>January 1, 2004 FSGW SACRED HARP G Baltimore Contra (Lovely Lane)</p>		

ADVANCE NOTICE

FSGW • 2004

Saturday, February 7, 2003

FSGW ANNUAL MINI-FEST

Takoma Park Middle School,
Takoma Park, MD

Thursday, March 25

BRYAN BOWERS

Glen Echo Town Hall, MD

April 2-4, 2004

15TH ANNUAL POTOMAC RIVER SACRED HARP SINGING CONVENTION

Virginia

April 16-18, 2004

22ND ANNUAL CHESAPEAKE DANCE WEEKEND

Saturday, May 1, 2004

SARA GREY

8 pm • House Concert, Laurel MD

Saturday, May 15, 2004

18TH ANNUAL WASHINGTON SPRING BALL ENGLISH COUNTRY DANCE

Location TBA

Saturday, May 15

FSGW Monthly Program THE JOHNSON GIRLS

Sea Shantys

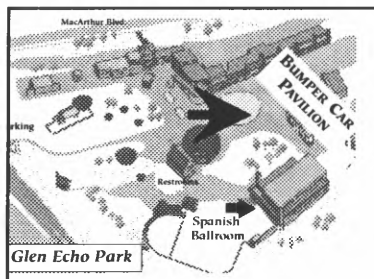
8 pm • WES, DC

DIRECTIONS TO FREQUENT VENUES:

Washington Ethical Society (WES)

Auditorium. 7750 16th St., NW, just south of the intersection of Kalmia Rd. and 16th St., about four blocks inside the DC/MD line.

From the Beltway: Take the Georgia Avenue South exit. Stay in either right lane. Go 0.4 miles from the exit ramp, where the right lanes curve and put you on 16th St South. Follow 16th past East-West Hwy (Rte 410); cross the MD/DC line at Portal Dr. Kalmia Road is the first traffic signal south of the line, and WES is the second building on the right after you cross Kalmia. You may park on Kalmia Road by turning right at the light, or on either side of 16th St.



Spanish Ballroom/Bumper Car Pavilion, Glen Echo Park. 7300 MacArthur Blvd. at Goldsboro Rd. in Glen Echo, MD.
The Bumper Car Pavilion is located just past and to the

right of the carousel.

From the Beltway:

MARYLAND SIDE: at 2-lane Exit 40 take the left fork for Cabin John Parkway. Where Cabin John merges with Clara Barton Pkwy, move into the left lane, under the overhang.

VIRGINIA SIDE: get into the far right hand lane at the top of the bridge. At the first fork, bear right. Stay in the left lane; watch for Cabin John traffic merging from the right at the overhang.

MD/VA: Watch for signs to MacArthur Blvd. Make a very sharp hairpin turn and move immediately into the right lane. At the T intersection/stop sign, turn left onto MacArthur Blvd. Upper parking lot on the left. For lower parking lot, go around the small traffic circle and make the first left onto Oxford St.

By public transportation: Take the #29 bus from the Friendship Heights Metro Station. Ask the driver to let you know when to get off for Glen Echo Park. The bus stops running before the dance ends. Ask the dance coordinator to announce you need a ride. We've never left anybody at the park. Last bus leaves Friendship Heights Metro at 7:30 pm.

Glen Echo Town Hall

6106 Harvard St., Glen Echo, MD:

From the Beltway:

MARYLAND SIDE: at 2-lane Exit 40 take the left fork for Cabin John Parkway. Where Cabin John merges with Clara Barton Pkwy, move into the left lane, under the overhang.

VIRGINIA SIDE: get into the far right hand lane at the top of the bridge. At the first fork, bear right. Stay in the left lane; watch for Cabin John traffic merging from the right at the overhang.

MD/VA: Watch for signs to MacArthur Blvd. Make a very sharp hairpin turn and move immediately into the right lane. At the T intersection/stop sign, turn left onto MacArthur Blvd. Go around the small traffic circle. Third left is Harvard Ave.

PLEASE NOTE: Please park in the lot behind the hall, on University Drive, or on the east side of MacArthur, NOT on Harvard Street.



FSGW Board 2003-2004

Anne Sergeant, president	president@fsgw.org	301-270-4553
Kathy Westra, vice-president	vicepresident@fsgw.org	301-587-3807
Treasurer - Position OPEN		
April Grastorf, secretary	secretary@fsgw.org	703-242-2733
Charlie Baum, program	program@fsgw.org	301-587-2286
Betsy Platt, special events	special@fsgw.org	301-320-7099
Janine Smith, dance	dance@fsgw.org	301-926-9142
Lynn Pastore, membership	members@fsgw.org	301-577-0745
Lesley Frank, publications	newsletter@fsgw.org	301-595-8806
Susan Clark, publicity	publicity@fsgw.org	301-565-5126
Jean McAulay, at-large	board1@fsgw.org	301-408-2381
Holly Steussy, at-large	board2@fsgw.org	703-403-.8813
Dennis Cook, past-president	pastpresident@fsgw.org	301-776-4314
Jim Cole, past-treasurer	pasttreasurer@fsgw.org	703-356-9678

FSGW Board Meeting

Tuesday, December 30 • 8 pm

The monthly FSGW board meeting will be held at Classroom 201 at Glen Echo Park. All FSGW members may attend. If you wish the Board to consider a particular matter, please contact the appropriate board member or **Anne Sergeant, FSGW President, at 301-270-4553.**

Workshops, Weekends, Festivals, & Special Events *continued from page 10*

Victoria's Revenge Dancefest • Cape May, NJ May 7-8, 2004

Dancefest 2004 features the **Capitol Quicksteps Quadrille Orchestra**. This 15-piece band includes some of the finest musicians in the region. They played for the first 10 Dancefests and we're very excited to have them back. The callers will be **Becky Hill** and **Nils Fredland**. For more information 301-320-7099 or <http://www.contradancers.com/dancefest/index.htm>.

Almost Heaven 2004 • Buffalo Gap Camp, WV Memorial Day Weekend, May 28-31, 2004

A weekend of contra, swing, waltz and tango with **George Marshall** and **Swallowtail** Couple dance with **Goldcrest** (**Dave Wiesler**, **Paul Oorts** and **Daron Douglas**). Dance instruction by **Ellen Engle** and **Marc Shepanek** (swing, tango and selected ballroom dances), and **Gaye Fifer** and **Wayne Albright** (waltz). For information contact **Joyce Duffy-Bilanow** at 301-596-0487 orheavenjoyce@comcast.net. Website: www.contradancers.com

Dances

CAJUN/ZYDECO

Somebody Scream Dance Series • Catonsville, MD Saturday, December 6 • 9 pm to midnight.

Free dance lesson at 8pm. Music by **T Broussard and the Zydeco Steppers**. At the Barn Theater at Catonsville Community College. Partners not necessary, newcomers welcome! Free dance lesson at 8. Admission: \$10, \$8 for Baltimore Folk Music Society members. Co-sponsored by BFMS and Catonsville Community College Office of Student Events. Info: **TriciaR1@aol.com** or **Cajun/Zydeco web site: <http://www.cajunzydeco.net/>**

DIRECTIONS: From I 95, exit at Route 195; take Route 166 north (Rolling Road) towards Catonsville. At the second light (Valley Road) turn left onto the campus. Barn Theater is the stone building on the hill beyond parking lot. Free, well-lit parking.

COMMUNITY/FAMILY

For the IMT/FSGW Community Dance, see page 2.

Family Dance • Baltimore, MD

No family dance in December.

CONTRA

Sundays:

The FSGW Sunday Night Dances are listed on page 2.

Bear Dancers Sunday Contra Dance • Bear, DE Sunday, December 14 • 2-5 pm

Nils Fredland calls to the music of **Jill Smith** and **Dave Cotrell**. At 208 Mariners Way, Bear, DE. Suggested donation \$6, all proceeds to performers. Potluck following dance. Info/directions: dancers@baltwirl.com or 302.838.0493 x5 or www.baltwirl.com.

DIRECTIONS: From Baltimore/DC: I 95 north to Del state line, take Exit 1 (Rte 896 South); just past Denny Road turn left onto Howell School Rd. At T intersection with Red Lion Rd turn left, cross RR tracks and turn right onto Kirkwood/St. George's Rd for about 0.5 miles, then right onto Mariners Watch. Check web site for directions to avoid tolls.

Wednesdays:

BFMS Lovely Lane Contra Dance • Baltimore, MD Wednesdays, 8-11 pm

Lovely Lane Church, 2200 St. Paul St., Baltimore, MD. Sponsored by the Baltimore Folk Music Society. All dances are taught and walked through. Beginners are always welcome and are encouraged to arrive promptly at 8 pm. Nationally known musicians and callers appear regularly. Free beginners' workshops on 2nd and 4th Wednesdays at 7:30. Admission: \$6 for BFMS/FSGW Members, \$8 for Non-members. Info: www.bfms.org or **Greg Frock** at 410-433-4419.

December

- 3 Caller **Steve Gester** with music by **Carl Friedman**, **Colleen Reed**, **Kendall Rogers**, and **Andrew Marcus**.
- 10 Free New Dancer workshop at 7:30 pm. Caller **Eva Murray** with music by the **Foggy Bottom River Valley Mountain Boys**
- 17 Caller **Shawn Brenneman** with music by **Larry Unger** and **Elke Baker**
- 24 No dance
- 31 No dance

January 2004

- 1 **Thursday Dance!** Caller TBA with music by **Cabaret Sauvignon**.



Dances continued

Fridays:

Friday Night Contra Dance • Glen Echo, MD Fridays • 8:30-11:30 pm

The Friday Night Dancers, in cooperation with the National Park Service, Montgomery County, and the Glen Echo Park Partnership for Arts and Culture, sponsor contra dances (with occasional squares and couples dances) to live music in Glen Echo Park's Bumper Car Pavilion or Spanish Ballroom (Directions, page 14). Free beginners' workshop at 7:30 pm. Dance starts at 8:30. Admission: \$7. To play for or call a dance, email fndbooking@folkdancer.com. For other information: <http://fnd.folkdancer.com>.

December

- 5 Beverly Smith calls to *Footloose* - David DiGiuseppe, Jonah Blaustein, Andrea Hoag, Rex McGee, Dean Harrington, and Pete Campbell.
- 12 TBA calls to the *Glen Echo Open Band*.
- 19 Tom Hinds calls to the music of Joe DeZarn, Liz Donaldson and Ralph Gordon.
- 26 Nils Fredland calls to *Mock Turtle Soup* from Asheville — Pearl Mueller (fiddle), Willie Repoley (mandolin, trumpet), Chris Holleman (banjo, guitar).

Saturdays:

Second Saturday Dance • Baltimore, MD December 13 • 8-11 pm

Free dance workshop at 7:30 pm. Caller Ann Fallon with music by the *Contra Rebels*. At St. Mark's on the Hill Parish Hall, 1620 Reisterstown Rd., 0.5 miles from Exit 20 South, Baltimore Beltway. Admission \$8/BFMS members and affiliates \$6. Info: www.bfms.org. hotline at 410-366-0808.

Bluemont Oldtime Country Dance • Purcellville VA Saturday, December 20 • 8-11pm

Tom Hinds calls to music by the *Avant Gardners*. Beginners' workshop 7:30, dance 8-11:00. Admission: \$7/\$5 for Bluemont friends and students. Info: www.bluemont.org or 703-777-6306

DIRECTIONS: From 495, take VA Route 7 west to the Purcellville/Lovettsville exit (Route 287). Turn left at the light onto 287. Go about half mile and turn right at T intersection, onto E Main St. (Business Route 7). Continue about 1 8/10 miles (through two traffic lights) to flashing light, and turn left onto 20th St. Go to the right of the church, onto Nursery Ave. Go to Purcellville Skating Rink, on the left. Lots of parking!

Lancaster, PA Contra Dance • PA Saturday, December 20 • 8-11pm

Susan Taylor calls to *June Apple*. At St. John's Episcopal Church 321 W. Chestnut St. Lancaster, PA. Beginners workshop at 7 pm. \$7/\$4 Admission \$7/\$4.

For information call Shane at 717-390-7277 or email Shirley at sam@mcc.org.

Fourth Saturday Contra Dance • Frederick, MD Saturday, December 27 • 8-11 pm

Robbin Schaffer will call to music by *Contrazz*. Dance is held at the Trinity school near Harry Grove Stadium. Admission \$7. Beginners' workshop at 7 pm; dance starts at 8 pm.

Info/directions: www.contradancers.com or call Boe Walker at 301.694.6794 star 1.

BFMS Midwinter Ball • Towson, Maryland Saturday, January 31, 2004 • 7:30-10:30 pm

Beth Molaro will call contras and squares to the music of the *Capitol Quicksteps Quadrille Orchestra* (led by maestro Steve Hickman) at the annual Midwinter Ball, Baltimore's premiere event for traditional American folk dancing and revelry. The Ball begins with a reception at 6:30 pm, followed by a Grand March at 7:30 pm (half hour earlier than usual). The dance will take place in the Chesapeake Room of the University Union, Towson University. For further information call 717-432-7840, send email to midwinterball@bfms.org, or visit the BFMS web page at www.bfms.org.

ENGLISH COUNTRY

Mondays:

English Country Dance (BFMS) • Reisterstown, MD Mondays • 8-10:30 pm

English Country Dancing is joyous, lively movement to elegant music in a friendly, informal setting. The figures are simple, and each dance is taught and walked through. New dancers are always welcome. Beginners' workshop on the first Monday promptly at 7:30 pm. Sponsored in part by the Maryland State Arts Council. Admission: \$6 for Members, \$8 for Non-members. St. Mark's on the Hill Parish Hall, 1620 Reisterstown Rd, 0.5 miles from Exit 20 South, Baltimore Beltway.

Info: Mike French at 410-889-3252

December

- 1 Caller Colin Hume with music by Dave Wiesler, Jeff Steinberg, and Marty Taylor.
- 8 Caller Sharon McKinley with music by Jonathan Jensen, Colleen Reed, and Becky Ross.
- 15 Caller Christopher Field with music by the *Geud Band of Baltimore*
- 22 Caller Susan Taylor with music by Julie Gorka, Bob Garber, and Carl Friedman.
- 29 Caller Rich Galloway with music by Robbin Schaffer, Dawn Culbertson, and Ralph Barthine.



Dances continued

Tuesdays:

English Country Dance (CDSS) • Herndon, VA
Tuesday, December 9 • 7:45 pm

Liz Donaldson on piano and accordion. Second Tuesday only this month. At Harding Hall, 730 Jackson Street. Workshop includes figures, phrasing, and style. Live music (guest musicians welcome; call in advance). \$3. No partner or experience necessary.

Info: Barbara Harding 703-437-3615 or bharding@quixnet.net.

Wednesdays:

FSGW English Country Dance • Glen Echo, MD See the listing on page 4.

Saturdays:

English Country Holiday Dance • Silver Spring, MD
Saturday, December 13 • 8-10:45 pm

At Sligo Middle School, 1401 Dennis Ave. Dance to music by *Peascods Gathering*, calling by Barbara Harding and Bob Farrall. Includes festive lighting and decorations, and traditional flaming raisins snapdragons for good luck in the following year. Beginners and singles welcome. \$5. Info: Carl Minkus 301-493-6281, Karla Farrall 301-577-5018.

English Country Dance (CDSS) • Herndon, VA
Saturday, December 20 • 8pm

At Harding Hall, 730 Jackson St., Herndon, VA. Caller Barbara Harding with recorded music. No experience or partner necessary. Free. Info: Barbara at 703-437-3615 or: bharding@quixnet.net

INTERNATIONAL

ALPINE

Alpine Dancers • New Carrollton, MD
Sunday, December 7 • 4-6:30 pm

Alpine Dancers hold free, open practice at the New Carrollton Municipal Center, 6016 Princess Garden Pkwy., near Washington Beltway exit 20A. New dancers welcome. Couple and trio figure dances from Austria, Germany and Switzerland. Recorded and live music. Confirm dates, as practices may be replaced by performances. Info/directions: Herbert & Carol Traxler, 301-577-3503, www.alpinedancers.org email caroltraxler@yahoo.com.

CEILI (IRISH)

Ceili Dance • Fairfax, VA

Comhaltas Ceoltoiri Eireann (CCE) sponsors a second Saturday dance monthly at the John Wood Center, 3730 Old Lee Hwy in Fairfax. Lesson at 7:30

pm. *The Bog Wanderers Ceili Band* plays from 8 to midnight. Free tea, coffee, sodabread. Softdrinks \$0.75 Admission: Members \$10, non-members \$12, 6-16 \$6; maximum family charge \$25. Info: Vickie Barr 703-521-4340.

INTERNATIONAL

Mondays:

Bethesda International Folk Dancing • MD
Mondays • 7:30-10 pm

Dance on the wood floor of the Leland Community Recreation Center social hall, 4301 Willow Ln. in Bethesda. No partner or experience necessary. 7:30 pm beginners teaching, 8 pm intermediate/advanced and requests. Mostly recorded but occasionally live music, parties, and workshops. On certain holidays, we meet at our alternate location, The Women's Club of Bethesda. Call for recorded message. Admission \$5. Info: Phyllis or Brandon Diamond, 301-871-8788 or diamonddancecircle@comcast.net.

Circle Dances • Bethesda, MD

Mondays • December 8 and 15 • 7:30-9pm

\$10 per session. For description, see listing for Circle Dance under Thursdays. River Road Unitarian Church, 6301 River Road, Bethesda, MD. Info: Judit Andai at 301-530-0369 JuAndai@aol.com or Diane Wicks Popper at 301-897-1555 DianeFOL@aol.com

Tuesdays:

Arlington International Folk Dancing • VA
Tuesdays • 8 - 10 pm

Key Elementary School, off Veitch St. between Wilson and Key near the Courthouse Road Metro, Arlington, VA \$3. Recorded music. Instruction, walk-throughs, and requests. Singles welcome and all ages or levels of expertise. Info: 703-527-8998 or sstulberg@earthlink.net

Wednesdays:

Columbia International Folk Dancing • MD
Wednesdays • 8 - 10:30 pm

Kahler Hall, Beaverkill Rd. at Harper's Farm Rd., Columbia, MD. Admission \$3. Recorded music. Beginners welcome. Teaching until 9 pm. We have parties and workshops. Info: 410-997-1613 (night), or 301-495-4642 (day).

Thursdays:

The FSGW Glen Echo Folkdancers are listed on page 2.

Dances continued**Circle Dances • Arlington, VA****Thursdays, December 4 and 11 • 8-9:45 pm**

Circle dance unites traditional folk dance with modern choreography to create a unique collection of dances. Emphasis is on Balkan, Gypsy, and Armenian dances. Explore dance as a celebration of life and a form of meditation. Recorded music. No partner necessary. All levels welcome/all dances are taught. Arlington Unitarian Universalist Church at the corner of Route 50 and George Mason Dr. \$10 per session or purchase a block of sessions at reduced cost.

Info: Judie David at 703-451-2595 or Vedavid@starpower.net

Chevy Chase International Folk Dancers • DC**Thursdays • 7:30-9:30 pm**

Chevy Chase Community Center, 5601 Connecticut Ave, NW, Washington DC (Connecticut Ave. at McKinley St., 2 blocks south of Chevy Chase Circle). Instruction and walk-throughs until 8:30. All levels welcome. No partner necessary. Recorded music. Leader **Roland Forbes**. **Info: Jackie Davis 301-424-8827 or Naomi Rogers 301-438-0063.**

Mount Vernon International Folk Dancing • Alexandria, VA**Thursdays • 8-10 pm**

Mount Vernon Unitarian Church meeting hall, 1909 Windmill Lane, Alexandria, VA. Instruction, walk-throughs, requests. No experience or partner needed. Admission \$2.50. Recorded music.

Info: 703-780-2393 or kkkrogh@aol.com.

Fridays:**Greenbelt International Folk Dancing • MD****Fridays • 8:30-11pm**

Focusing on dances from Eastern and Western Europe, Scandinavia, and the Mediterranean. No partner or experience necessary. Teaching from 8:30 - 9:15 pm, request dancing 9:15-11 pm. Mostly recorded music. Greenbelt Community Center Dance Studio (beautiful wooden floor!), 15 Crescent Rd., Greenbelt, MD. Admission \$5. **Info: Larry Weiner 301-565-0539 or weiner@erols.com; John Robinson 410-715-9210; or John Bartholomew 301-565.3650.**

Saturdays:**Circle Dances • Burke, VA****Saturday, December 13 • 7:45-10:30 p.m.**

For description, see listing for Circle Dance under Thursdays. Accotink Unitarian Universalist Church, Lake Haven Dr. (near the intersection of Fairfax County Parkway and Burke Lake Rd.)

ISRAELI**Israeli Dancing • Bethesda, MD****Mondays • 8-10pm**

Beginners/Intermediate (everyone welcome) taught by **Moshe Shem-Tov** and **Aviva Kutnick**. Join the circle and have a great time. Recorded music. \$6 adults, \$3 students. Adat Shalom Reconstructionist Congregation, 7727 Persimmon Tree Lane.

Info: 301.871.5663 or danceto@home.com. Directions:301-767-3333 or www.jrf.org/adatsmd/

Israeli Dancing • Silver Spring, MD**Tuesdays • 7:30-11pm**

Shaare Tefila Congregation, 11120 Lockwood Drive, Silver Spring (near intersection of Route 29 and New Hampshire Ave.) 8-9, Beginner/intermediate teaching. 9-11, Advanced teaching/open dancing. Admission \$5/\$2 students. **Info: Helen Rubin, 703-207-1551 or Helen@israelidance.com.**

Israeli Dancing • Potomac, MD**Wednesdays • 8:15-10pm**

Har Shalom Congregation, 11510 Falls Rd., Potomac (between Democracy Blvd and Montrose Rd). "Oldies" only (dances before 1990). Instruction: 8:15-8:45; requests 8:45-10. Recorded music. \$5. **Info: Ben Hole 301-441-8213.**

Israeli Dancing • Greenbelt, MD**Saturday, December 6 • 8:15-11 pm**

Israeli "Oldies" party (dances before 1990). Recorded music, light refreshments. Greenbelt Community Center, 15 Crescent Road. \$5. **Info: Ben Hole 301-441-8213.**

MORRIS**Bluemont Morris • Reston, VA****Mondays • 7-8:30pm**

A group of men and women who do traditional Morris dances in the spring and fall. The group is fun and the dancing is addictive and great exercise.

Info: ttp://monticello.avenue.org/amm/ or Laura 703-845-8536.

Rock Creek Morris Women • Silver Spring, MD**Wednesdays • 7:30pm**

Visit exotic locales—Toronto, Brattleboro, the Biltmore Estate! Dance aerobically to live music! Strap bells to your legs! Join a strong community that dances, plays, sings, and drinks together. Practice held at Eastern Middle School, Silver Spring.

Info: 301-270-4328; or ladyhawke20@lycos.com; or www.uswet.com/RCMW.html

Dances continued**Foggy Bottom Morris Men • Takoma Park, MD**
Thursdays • 8-10pm

Learn and perform Morris and other English dance traditions. As long as you enjoy dance and movement you can experience the vigorous thrill of the Morris! We welcome new and slightly used dancers at practices, Beginners' nights are first Thursdays. Takoma Park Elementary School, Holly Street, near Philadelphia Ave. **Info: Jud McIntire at 703-528-0588 or maxintire@comcast.net, Bill Brown at 301-270-2014 or wmlbrown@earthlink.net, or website, www.fbmm-morris.org**

SCANDINAVIAN**Scandinavian Holiday Dance Party • Greenbelt, MD**
Saturday, December 20 • 7-10pm

Scandia DC sponsors this third Saturday dance party at Greenbelt Community Center (dance studio), 15 Crescent Road, Greenbelt, MD. Live fiddle music by **Andrea Hoag, Loretta Kelley, and the Scandia DC Spelmannslag**. No teaching. Wear a costume if you have one, bring finger food to share if you can, but most important, bring yourself. No partner necessary. \$7 **Info: 202-333-2826, linda@scandiadc.org or www.scandiadc.org.**

Scandinavian Candlelight Holiday Dance & Luciafest • College Park, MD**Sunday, December 7 • 7:30-10:30 pm**

At Cherry Hill Park Conference Center, 9800 Cherry Hill Road, College Park. Music by **Peascods Gathering**. Dancing to candlelight on a magnificent suspended hardwood floor. Includes traditional holiday refreshments. Singles, couples, beginners, experienced, all welcome. \$10. **Info: Lorraine Silsbee 301-585-1130 or Carl Minkus 301-493-6281.**

SCOTTISH**Scottish Country Dance • Bethesda, MD**
Mondays • 8-10pm

Similar to English Country. No partner needed. Bring soft, flexible shoes. Taped and live music. Classes for new and experienced dancers: NIH Building T-39 (Metro: Medical Center). Be prepared for security car search. **Info: Mary Ann Williamson at 202-686-9591 or Belinda Acre at bebac.earthlink.net.**

Scottish Country Dance • Greenbelt, MD
Tuesdays • 8-10pm

Similar to English Country. No partner needed. Bring soft, flexible shoes. Taped and live music. New and experienced dancers. Greenbelt Community Center. **Info: Jennifer Mayrovitz: 410-922-6369 or rjmay-ro@erols.com**

Scottish Country Dance • Alexandria, VA
Wednesdays • 7:30-9:30pm

Similar to English Country. No partner needed. Bring soft, flexible shoes. Taped and live music. Jefferson-Houston High School, 1501 Cameron St., Alexandria, VA. Be sure to confirm class date (school events may pre-empt). **Info: Mel or Ellie Briscoe at 703-461-7383 or mail@briscoe.com.**

Scottish Country Dance • Silver Spring, MD
Alternate Fridays • 7:30-9:30pm

Montgomery Blair HS, University Blvd at Colesville Rd. Similar to English Country. No partner needed. Bring soft, flexible shoes. Taped and live music. Lots of dance events, weekends, etc. Classes for new and experienced dancers. **Info: Ralph Stoddard at 301-649-5666 or caberfei@aol.com.**

SQUARE**Taylor Made Squares • Silver Spring, MD**
Tuesdays • 8-9:30pm

Betsy Taylor calls squares to recorded music at the Long Branch Community Center, Piney Branch Rd., Silver Spring, MD. Wood floor. No experience or partner necessary. **Info: 301-589-4868.**

SWING**WSDC Dance • Glen Echo, MD**
Saturday, December 6 • 8-midnight

We will present another of our ever-popular recreations of a WW II-era USO Canteen Dance on Saturday, December 6 with the **Brooks Tegler Army/Air Force Band**. Introductory swing dance lesson from 8-9 followed by dancing. \$12 or volunteer for one hour and get in free. Email Derek at wsdcvolunteer@hotmail.com. Dress is casual and no partner or dance experience is necessary. All ages are welcome. Bring something to drink (no alcohol allowed in the park). Directions on page 14.

WALTZ / BALLROOM / SOCIAL**Saturdays:****Fall Dance with the Edelweiss Band • Bethesda, MD**
Saturday, December 6 • 8 pm-midnight

Social dancing at the Bethesda Women's Club, 5500 Sonoma Rd., Bethesda, sponsored by the Arminius Social Club. The European-style dances feature live music with lots of polkas and waltzes and a smattering of other ballroom dances — swing, foxtrot, cha-cha, samba, rheinlander, mambo, rock 'n' roll. Admission of \$20 per person includes beverages and snack. **Info: 301-559-1944 Gerhard Meinzer; 301-649-3212 Peter Krusen; 410-635-2435 Joan Stoneberger.**
Sundays:

Dances *continued***Sunday Afternoon Waltz • Glen Echo, MD**
December 7 and 21 • 3-6pm

At 3 pm there is a half hour introductory waltz workshop, followed by social dancing until 6 pm. Admission \$7 including lesson. In the Spanish Ballroom, Glen Echo Park.

7 Cabaret Sauvignon

21 Gigmeisters

**Christmas Ball • Washington, DC**
Sunday, December 14 • 7 pm

Sponsored by T.H.I.S. at beautiful Meridian House, 1630 Crescent Pl., N.W., Washington, DC. Tickets \$75 per person (\$65 for participants in the dance lessons see www.viennesewaltz.org). Dessert and champagne. Dance music by the excellent **Con Brio Salon Orchestra**. Black tie (white tie optional). Dances will include Viennese waltzes, other ballroom dances, polkas, schottisches, and the Fledermaus Quadrille. **Info/tickets from Mrs. Böcek at 703-528-0487.**

Dance Classes Class *listings may be submitted by FSGW members only.***BELLY DANCE****Beginning Belly Dance**

Thursdays, January 15-April 8 • 11am-12pm

Saturdays, January 17-April 10 • 9:30-10:30am

Shimmy, vibrate and undulate! Come learn the basic movements of the ancient art of belly dance with **Aziza Azhar** (aka **Judy Rose Seibert**, who you may remember from Swing Swap or Almost Heaven). Recorded music. Dancers of all sizes and shapes are invited to come explore the sensuous movements of belly dance in a supportive environment. Fee: \$169 for 13 weeks. In the Hall of Mirrors at Glen Echo Park, next to the Bumper Car Pavillion.

Info: Aziza Azhar at 301-588-4345, or Glen Echo Partnership for the Arts & Culture, www.glenechopark.org, or 301-320-7757.

SCANDINAVIAN**Beginning Scandinavian Dancing**

• **NIH, Bethesda, MD**

2nd Thursday, December 11 • 8-9:30 pm

Holiday Party with live music! Learn hambo, schottish, waltz, zwiefacher, and other couple turning dances. Singles, couples, beginners, and advanced dancers welcome. Come when you can; class is continuous, and some hambo is done every time. Wear smooth-soled shoes for turning. \$5. **Info: Lisa Brooks at 301-654-7667, 240-731-1935, or lisa@HamboDC.org <mailto:lisa@HamboDC.org>**

DIRECTIONS: Enter NIH at Wisconsin and South, for vehicle inspection (have ID available). Go to the south center of NIH and park in the NIH permit parking, next to Building T-39. Walk (8 minutes) from the Medical Center Metro stop. See map at www.HamboDC.org or on a flyer.

SWING/LINDY**Wednesdays:****Beginning/Intermediate Swing * Vienna, VA**
PSDC Room, 146 East Maple Avenue

Instructor: **Donna Barker**. Walk in classes every Wednesday. Lesson from 7:30-8:30 followed by DJ'd social dancing until 11. Lesson and dance \$10 PSDC members/\$12 non-members. Dance only \$6 mbrs/\$8 non-mbrs. Drinks included/no partner needed.

Info: Donna Barker at 703-978-0375 or <http://www.DanceDC.com> or donna@dancedc.com.

Sundays:

Instructors: **Donna Barker** and **Mike Marcotte**. Walk-in lessons and dancing every Sunday. 7-8 pm: Special dance style each month. 8-8:45 pm: Int./Adv. Swing/Lindy lesson (different moves each week). 8:45-10:30 pm: DJ'd social dancing. Lessons and dance: \$10 PSDC Members; \$12 Non-members. Dance only: \$3 PSDC Members/\$5 Non-Members. Refreshments included. You do not need a partner.

Info: Donna Barker at 703-978-0375, or <http://www.DanceDC.com> or donna@dancedc.com.





Give an FSGW Membership as a Gift!



If there's a lover of dance, folk music, storytelling, etc on your gift list this year, why not give FSGW membership as a gift? An individual membership is \$28 per year, family membership \$38 per year.

Request for Archival Material

The FSGW Board is still attempting to locate all FSGW archival material currently in the possession of individual members. FSGW needs to ascertain approximately how much space will be required to properly store all documents, tapes, newsletters, articles, photographs, etc. If you have archival material in your possession, we would very much appreciate receiving a letter or email from you, describing the type and volume of such material, and its approximate condition. Please send the information to secretary@fsgw.org.

FSGW Newsletter Editorial Policy

The Folklore Society of Greater Washington endeavors to print copy it deems relevant to its membership and purpose as stated in its by-laws:

"The main purpose of the Society is to further the understanding, investigation, appreciation, and performance of the traditional folk music and folklore of the American people."

- All copy (except classified ads) must be submitted by e-mail to newsletter@fsgw.org in text format in the body of the e-mail by the 10th of the preceding month.
- Please review comparable entries from the Newsletter and edit accordingly.
- The Editor reserves the right to edit or omit copy as necessary.

Editor: Lesley Frank • newsletter@fsgw.org • 301-595-8806

Design & Layout: Jennifer Woods GRAPHICS • Silver Spring, MD • 301-587-7174

Cliff Notes

Mary Cliff, host of WETA's long-running Traditions radio program, (and long time member of FSGW), now has a folk events calendar, which is accessible from the WETA website (www.weta.org). From the Community Events Calendar, click on "Who's Where", or from the Traditions playlist page, click on "Who's Where." You can also reach it through www.marycliff.net.

Please send calendar items to traditions@weta.com.

35 Years Ago — December 1968

— Joe Hickerson —

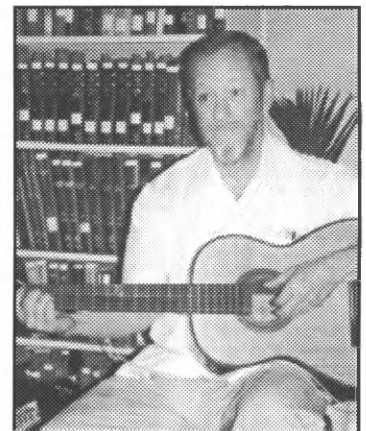
The December 13 FSGW program at the Washington Ethical Society featured **Bill Vanaver**. Among the many folk musicians scheduled to appear this month were **Ian & Sylvia**, **Tom Rush**, **Jerry Jeff Walker**; **Country Gentleman**; **Currie Family**, **Cliff Waldron & The Lee Highway Boy**, and **Bob Goff & The Bluegrass Buddies**. These events were reported in issues of *Bluegrass Unlimited* and *Washington Star*.

Meanwhile, the Library of Congress Archive of Folk Song registered the following researchers and visitors: **Joel Bailes** (Silver Spring); **Ann Briegleb** (UCLA); **Duncan Emrich** (retired Head of LC FOLK); **Frederic Lieberman** (Brown University); **Ralph Rinzler** (Smithsonian Institution); **Earl Spielman** (University of Wisconsin); **T. Temple Tuttle** (University of Maryland), and **Jesse Winch** (Howard University).



Joe Hickerson, head of the Archive of Folk Culture at the Library of Congress until his retirement in 1998, is available to sing and lecture about folk music. A founding member of FSGW in 1964, he has served as the Society's President, Program Chair and Book Review Editor, and now contributes this monthly column describing FSGW and other area events 35 years ago. If any readers have relevant flyers, clippings, etc. from 1968-69, please mail copies to Joe at 43 Philadelphia Ave., Takoma Park, MD 20912 for possible inclusion in this column.

Joe Hickerson, 1967 performing at an FSGW Sampler Concert



Joe at the Library of Congress, c. 2000.

C L A S S I F I E D S

Editorial Policy for Classified Ads: Only FSGW members may place an ad. Ads may be up to 50 words, including telephone number with area code. There is a limit of two ads per member per issue. Ads MUST be relevant to FSGW's stated purpose (see Editorial Policy). Charges: Commercial business: \$8 for 10 words; Non-commercial and individual \$4 for 10 words; 25% discount for any single ad placed in 11 consecutive issues (one year) and paid in advance. LOST & FOUND ads are FREE. Ad copy with check made payable to FSGW must be received by the newsletter deadline. Mail to the Editor: **Lesley Frank**; 11302 Odell Farms Court, Beltsville, MD 20705-4106.

CD MANUFACTURING BY OASIS®. Honest pricing, personal service. Free radio promotion nationwide on OasisAcoustic™ sample CDs. **(888)BY-OASIS**, www.oasisCD.com, or info@oasisCD.com.

LIVE SOUND REINFORCEMENT. Concert, dances, conferences, weddings, mitzvahs. Small to large systems, with or without sound engineer from sound check to encore. Folk, ethnic, blues, acoustics, our specialties. **Contact David Eisner at House of Musical Traditions 301.270.9090**. Gobs of experience, references on request.

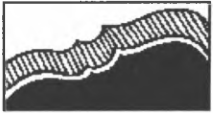
LOSE YOUR VOICE? Find it, understand your instrument, use it in good health for life! **Contact Barbara Ryan 703-426-1450; ionavoiced@pobox.com**

VIOLIN LESSONS FOR BEGINNERS OF ALL AGES. Patient, encouraging teacher of folk and classical music. Sight reading, ear training, music fundamentals, violin techniques, artistry and fun. **301.816.4976 or paulinelemerphd@teacher.com**.

MAGGIE'S MUSIC CDs BY HESPERUS AND MORE! New-Colonial America by **Hesperus** (Tina Chancey, viols; **Scott Reiss**, recorders, **Grant Herried**, lute). Also by **Hesperus**: Early American Roots and Celtic Roots with Scottish fiddler **Bonnie Rideout**. Over 50 recordings now available! **Contact, Maggie's Music, Shady Side, MD, 410.867.0642** (10-3-M-Th); mail@maggiesmusic.com; www.maggiesmusic.com

DANCE HALL. Looking for facility with wooden dance floors accommodating 2 classes (15 people each) in Northern D.C. area. **301.622.5945**

CD Booklets, labels, J-Cards Design — Also books, magazines, brochures Designing YOUR ideas! — **Jennifer Woods GRAPHICS 301.587.7174**



The **Folklore Society**
of Greater Washington

6009 84th Ave. ❖ New Carrollton, MD 20784
www.fsgw.org

PRESORTED
FIRST CLASS MAIL
US POSTAGE PAID
ROCKVILLE, MD
PERMIT #4297

Printed on recycled paper.

Address Service Requested.



FIRST CLASS



Carly Gewirz I1571 210001
PO Box 217
Clifton, VA 20124-0217

The Folklore Society of Greater Washington is a not-for-profit [Section 501(C)(3) of the IRS code] institution and we encourage the financial contributions of our members. Contributions in excess of annual dues are welcome and may be tax deductible. Please mail your gift to FSGW, 6009 84th Ave., New Carrollton, MD 20784. Subscriptions to the Newsletter only are available outside the Greater Washington Metro area.

FSGW IS DEDICATED TO PRESERVING AND PROMOTING TRADITIONAL FOLK ARTS IN THE WASHINGTON, DC METROPOLITAN AREA. MEMBERSHIP IS OPEN TO ALL WHO SUPPORT THESE GOALS UPON PAYMENT OF ANNUAL DUES.

FSGW Membership Form

Renewal New Address New Membership*

	<i>Individual</i>	<i>Family</i>
1 year	<input type="checkbox"/> \$28	<input type="checkbox"/> \$38
2 years	<input type="checkbox"/> \$51	<input type="checkbox"/> \$72
3 years	<input type="checkbox"/> \$75	<input type="checkbox"/> \$107
LIFE	<input type="checkbox"/> \$460	<input type="checkbox"/> \$700
Student	<input type="checkbox"/> \$20	

Newsletter Subscription ONLY \$20

Available ONLY to those living OUTSIDE the Greater Washington metro area. Newsletter Subscription ONLY carries NO membership privileges.

* If you are a new member, where did you get this newsletter?

- at Glen Echo Park (which event? _____)
 Another FSGW event (which one? _____)
 From a friend who is a member At my public library
 Other _____

Name(s) _____

Address _____

City _____ State _____ Zip _____

Phone(s) _____

H: (____) _____ W: (____) _____

E-mail: _____

May we list you in our Membership Directory?
(FSGW does not provide mailing lists to any other organizations.)

- Yes No
 Yes, but please do not list my:
 address home phone number work phone e-mail

I would like to help FSGW. Comments/Suggestions: _____



Send form and check made payable to FSGW to:
FSGW Membership ❖ 6009 84th Ave. New Carrollton, MD 20784

FSGW 8/03