

# The FOLKLORE Society

## of Greater Washington ♦ NEWSLETTER

Vol. 41 No. 8

♦ www.fsgw.org ♦ Hotline: 202.546.2228 ♦

April 2005

FSGW Monthly Program

Washington, DC



# JOE JENCKS

Labor Music:  
A Historic and Living Tradition

**Saturday, April 16 • 8 pm**

Joe Jencks is a national touring folk musician and award winning songwriter recognized for his contributions to modern labor and social justice music. His performance style is well rooted in the traditions of folk and labor music. He will present a program of music written by and about working people with selections spanning the last 150 years with a particular focus

on the labor music of the 20th century. Joe has asked folksinger and social historian

Joe Glazer, "Labor's Troubadour," to participate as a guest on the evening's program.

Joe earned his national reputation for his songs about working people, and for his unique merging of literate musical beauty, social consciousness, and spiritual exploration. Joe weaves a diverse web of stories with brilliant vocal skill, ensnaring even the most rigid of hearts, inviting them to open. Joe Jencks' CD *I Hear Your Voice* (2003) continues to be well received nationally as a significant work of modern folk music. "This is not a collection of navel-gazing tunes from your average singer-songwriter, these are inspiring songs!" —Ron Olesko, WFDU-FM, Teaneck, NJ. *Sing Out* magazine praised Jencks for his "Songs of poetry and heart!" and referred to him as the "conscience" of modern folk music.

Joe has had the unique pleasure of performing with folk luminaries including Pete Seeger, Holly Near, Utah Phillips, John McCutcheon, Rod MacDonald, Pat Humphries, and Bill Staines. Joe's life-long interest in folk music led him to undergraduate and graduate studies in Vocal Music Performance, Choral Conducting, and Music Education. He serves on the executive board of the American Federation of Musicians: Local 1000.

The monthly program is **FREE** to FSGW members and \$15 for non-members, although you're welcome to join FSGW at the door. For more information, see [www.fsgw.org](http://www.fsgw.org) or email Charlie Pilzer at [program@fsgw.org](mailto:program@fsgw.org). At the Washington Ethical Society, 7750 16th St., NW, Washington, DC. Directions, page XX.

### Inside:

#### FSGW:

Advance Notices	15
Board Members/Meeting	16
Chesapeake Dance Weekend	2
Co-sponsored Events	6
Editorial Policy	26
English Country Dances	4
House Concert/English Folk Club Night:	
DEREK SEED TUESDAY, APRIL 19	5
House Concert: MIKE AGRANOFF SATURDAY, APRIL 30	5
(Rescheduled from January)	
POTOMAC RIVER SACRED HARP CONVENTION	3
Sings & Other FSGW Events	6
Storytellers	6
Sunday Night Dances	2
Washington Folk Festival Info/Volunteer form	27

#### Features:

Calendar	14-15
Classifieds	26
Concerts & Concert Series	7
Dances	11
Dance Classes	21
Directions to Frequent Venues	16
Jams/Open Mics/Audience Participation	21
Storytelling	23
Workshops, Weekends, Festivals & Special Events	24

**FSGW Sunday Night Dance****Glen Echo, MD**

# FSGW Sunday Night Dance

## Contras & Squares

### Sundays • 7:30 to 10:30 pm

In the Bumper Car Pavilion or the Spanish Ballroom (check dates) at Glen Echo Park (Directions, page 16). FSGW, in cooperation with the National Park Service, Montgomery County, and the Glen Echo Park Partnership for Arts & Culture, presents contras and squares danced to live music by fabulous bands with awesome callers. Experienced and new dancers welcome; no partner needed. . . . **NEW! FREE Welcome/Orientation to Traditional American Dance session at 7 pm.** Come early to get the inside scoop on all this stuff, personalized to suit your needs! . . . Dances become more challenging later in the evening. **Admission \$8 for FSGW, BFMS, CDSS, and ATDS Members; \$10 for the general public. Children 17 and under \$4.** Bring something to drink (no alcohol is permitted in the Park). If you use scented products, such as perfumes, please be considerate of those with allergies and use a gentle hand. **In the event of inclement weather, call the Park at 301-634-2222 after 3 pm for possible cancellation info if the Park closes. Info: Janine Smith at [dance@fsgw.org](mailto:dance@fsgw.org) or [www.fsgw.org](http://www.fsgw.org).**

**April**

- 3 **Gaye Fifer** (VA) calls smooth-sailing contras to the New England, Quebecois, Maritime Canada, and British Isles-influenced music of **Atlantic Crossing** (VT): **Viveka Fox** (fiddle, bodhran), **Brian Perkins** (mandolin, bouzouki, banjo, feet), **Peter Macfarlane** (fiddle), and **Rick Klein** (guitar). *In The Ballroom.*
- 10 The train pulls out of **Waverley Station** with the "Company of Callers, Part V" on board for a rollicking evening of great dancing. **David Knight** (fiddle), **Liz Donaldson** (piano), and **Ralph Gordon** (bass) with a small herd of local callers corralled by **Ann Fallon**. Choo choo cha boogie! *In The Bumper Car Pavilion.*
- 17 Straight from Chesapeake Dance Weekend! **Joseph Pimentel's** calling to the music of **Flapjack**: **Karen Taylor** (fiddle and banjo), **Jay Edmunds** (fiddle, guitar, mandolin), **Sam Allison** (bass), and **Teillard Frost** (fiendish yet tasteful percussion) will make ya FLIP! *In The Ballroom.*
- 24 **Susan Taylor** whips up a magical evening for your dancin' pleasure to the soulful sounds of **Alan Jabbour** (fiddle) and **John Schwab** (guitar). Prepare to have your sox knocked off! *In The Bumper Car Pavilion.*

### From our Dance Chair:

Chesapeake Dance Weekend — OK, you're cuttin' it pretty close, but there may still be room for YOU to join the happy band of dancers, singers, musicians, bon vivants, and die-hard merrymakers at **Chesapeake Dance Weekend April 15-17** by the beautiful shores of the South River, a mere 20 minutes south of Annapolis, but worlds away from what we call "everyday life." If you've been so caught up with reality TV that you took no notice of the line-up, this warm and wonderful weekend features **Flapjack** with **Joseph Pimentel** calling, **The Hoover Uprights** with **Beverly Smith** calling, and English country dancing with **Brad Saylor** calling to the music of **Mary Lea** and **Jacqueline Schwab**. Visit [www.fsgw.org](http://www.fsgw.org) for all the details and download the registration form **TODAY!**







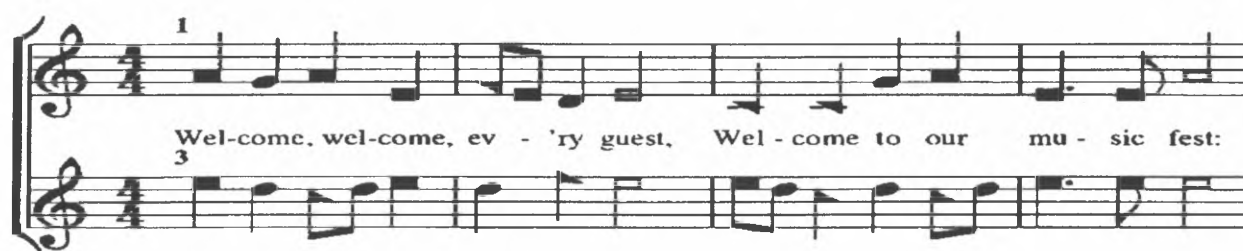
# The Potomac River

## Sacred Harp Singing Convention

### Saturday-Sunday, April 2-3



Two days of sacred shouting in four-part harmony, plus fellowship and food, draw scores of singers from a wide region to this annual event sponsored by FSGW. It's a great chance to experience the foot-stomping spirituality of this venerable, vital music, and to learn your part in the company of experienced singers. Singing is unaccompanied, from the 1991 edition of the four-shape tunebook *The Sacred Harp*, first published in 1844.



Saturday, April 2 • 1 - 5:30 pm:  
Singing from *The Sacred Harp*

(registration begins at 12:30) at Pohick Church Parish Hall,  
9301 Richmond Highway (US 1 at Telegraph Rd.), Lorton, Virginia.

**Note the new schedule** — no Friday events or Saturday lunch. Following the singing, the convention chair and his wife will host a social supper and New Traditions singing nearby at their home in Kingstowne (Alexandria), VA. Come for dinner, conversation, and cheer, and try out four-shape songs newly composed or found in tunebooks other than the 1991 *Sacred Harp*. If you wish to lead such a song, bring 40 copies. Some loaner copies of *Eclectic Harmony* and *Oberlin Harmony* will be available too. Driving directions will be available at the church site.

Sunday, April 3, 10 am - 3:30 pm  
Singing from *The Sacred Harp*  
and Dinner on the Grounds

(registration begins at 9:15) at the Great Falls Grange,  
9818 Georgetown Pike (Route 193), Great Falls, Virginia.

The potluck lunch will be provided by local singers (if you're one, gastronomic generosity is welcome). The book will be available to borrow or buy. Neither experience nor funds are necessary, though donations to cover costs are welcome.

For more information visit <http://www.his.com/sabol/PRC2005.html> or contact convention chair Tom Tucker at 703-313-4964 or [trtucker@flash.net](mailto:trtucker@flash.net). For all kinds of information about shape-note music, see <http://fasola.org>.

**FSGW English Country Dance****Glen Echo Town Hall, MD**

# **FSGW English Country Dances**

## **Wednesdays • 8 to 10:30 pm**

Dance on a wood floor in the climate-controlled community room of the **Glen Echo Town Hall** (Directions, page 18). Bring clean, non-scutting shoes for dancing. Talented callers are accompanied by top-notch musicians playing a delightful mix of instruments, including piano, fiddle, flute, harp, oboe, concertina, bassoon, and viola. Enjoy the welcoming crowd and light refreshments. Experienced and new dancers welcome, no partner needed.

**Admission \$7 for FSGW members, \$9 for Non-members. Info: Norm Bernhardt at 301-320-2469; Stephanie Smith at 301-229-3577, or Roger Broseus at English@fsgw.org.**

**April**

- 6** **Bob Farrall** calls to music by **Bruce Edwards** (concertina and bassoon), **Liz Donaldson** (piano), and **Colleen Reed** (flute).
- 13** **Julie Gorka** (piano), **Anna Rain** (recorders), and **Karin Loya** (cello) provide the music while **Susan Taylor** calls.
- 20** **Diane Schmit** calls to the playing of **Jeff Steinberg** (fiddle), **Howard Markham** (concertina) and **Kendall Rogers** (piano)
- 27** **Becky Ross** (fiddle), **Paul Oorts** (mandolin) and **Liz Donaldson** (piano) play music to the calling of **Stephanie Smith**.

## **Election Time's A'Comin'!!**

### **Ballots for Upcoming FSGW Election**

FSGW holds elections each spring. Be on the lookout for a RED FSGW election ballot in your mailbox. Ballots are scheduled to be sent out by April 22. Your ballot must be postmarked by May 6. When the ballot arrives, be sure to make your selections and send it in. Election results will be published in the June Newsletter.

## **Needed: Crafts for Washington Folk Festival, June 4-5**

There are a few craft spaces available for the Washington Folk Festival, June 4 and 5. The crafts area is the Bumper Car Pavilion, which is covered and can be enclosed with clear tarps. The booth fee is \$110 plus 6 percent of sales. Festival audiences are very appreciative of the crafts which makes it an enjoyable show for everyone. We are looking for traditional handmade crafts, made by the seller. Organizations may apply if all work shown is made by their members. New crafts and crafters will be selected based on several considerations: a high standard of workmanship, design and originality; hand made or traditional crafts; items that fit well with the Festival's theme of folk music, dance and storytelling and will appeal to Festival audiences; and crafts that add variety and are not closely similar to other crafts in the show.

If you do handcrafts that you think would be great for the Festival, or you know someone who does, please contact **Bill Day** or **Rita Ferrara** at 301-946-2161 or send an e-mail to [wffcrafter@fsgw.org](mailto:wffcrafter@fsgw.org).

**FSGW House Concert****Laurel, MD****ENGLISH FOLK CLUB NIGHT**  
*with special guest***DEREK SEED***English trad, English style***Tuesday, April 19 • 8 pm**

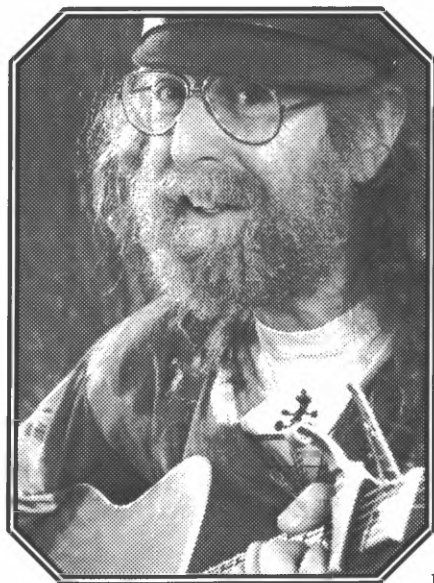
English Folk Club Night at the home of **Judy and Dennis Cook** in Laurel, MD. Bring your own beer — we'll have sodas & chips — oops! we mean crisps. Each half of the evening will start with a few songs from local singers (let **Judy Cook** know in advance if you want to be one of the floor singers). At the intermission -oops! we mean the interval- we'll have a raffle. It's all part of the tradition. **Derek Seed**, a fine unaccompanied singer from Eastbourne, Sussex, will entertain us with a concert of selections from his vast repertoire of traditional English songs from the 19th & early 20th centuries. If you heard him with the **Shellback Chorus**, come hear some of his non-shanty songs — many from the industrial revolution. And bring a few extra dollars for the raffle — it all goes to the special guest.

"**Derek Seed** has an impressive repertoire of traditional and contemporary songs. His blend of accomplished singing styles makes him an ideal concert or folk-club guest." —The late **Bob Copper, M.B.E.**

For further information, see the FSGW website, call the **FSGW hotline (202-546-2228)**. If that doesn't answer your questions, contact **Judy or Dennis Cook** at **301-776-4314** or **cooks@ceimd.com**. Metro: Sorry, way out beyond the reach, though the Cooks might be able to help you find a carpool ride. **Suggested donation \$5**

**FSGW House Concert****Takoma Park, MD**

Concert and Singaround with

**MIKE AGRANOFF***"The very model of a modern folk musician."***Saturday, April 30 • 8 pm***(rescheduled from the snows of January)*

What Mike Agranoff does as a folk musician is a rather difficult question to answer. He plays a superb fingerstyle guitar in idioms ranging from ancient harp tunes to obscure Tin-Pan-Alley compositions. His concertina arrangements of music by anyone from Bach to Berryman's may be haunting, complex, exciting, but are, above all, musical.

If you've been around the folk scene at all in the Northeast, you've probably seen him. He's that tall guy with the reddish beard going grey and funny hat with the light in it. And when the music starts, he's in the middle, adding to the chorus and probably knowing all the lines. His repertoire is not only varied, but vast.

*Continued on page 6*Send all Newsletter submissions to: [newsletter@fsgw.org](mailto:newsletter@fsgw.org)

## MIKE AGRANOFF HOUSE CONCERT *continued from page 5*

Mike is not only a collector of songs and a master at arranging them, but is also a writer of songs and recitations. He has a keen ear for the best of the best, and this only enhances his own writing. If you're sick of the endless stream of singer songwriters who write for the market, you will find Mike to be a refreshing alternative. He makes us laugh, cry and think, all the while entertaining us long into any evening of music. Because one of the few things Mike likes to do more than sing is to get other people to share their songs, the concert portion of the evening will be followed by a sing-around. Bring songs to share!

**Donations:** FSGW Members: \$10 Non-Members \$14 At the home of Kathie Mack in Takoma Park, MD. Contact Kathie at 301-270-5367 or [twizzles@starpower.net](mailto:twizzles@starpower.net) for directions. For further information about the performer, contact Charlie Baum, FSGW Special Events Chair, at [special@fsgw.org](mailto:special@fsgw.org) or 301-587-2286.

**Metro:** A short three-block walk from the Takoma Station on the Red Line. For further information, see [www.fsgw.org](http://www.fsgw.org) or call the FSGW hotline at 202-546-2228.

## Other FSGW Events

### FSGW Open Sing • Montgomery Village, MD *Friday, April 1 • 8:30 pm*

April's Open Sing will be held at the home of **Heather Pierce**. Cries of "Fore!" "for, for, for", "Four anda", "What for?" were heard across Washington. Was it golfers storming the courses? a marching band, a visit from Sesame Street? NO, It was folkies practicing for April's Open Sing Topic "Four, for, Forth". Bring related songs of four part harmony, 4/4 time, fourths, quarters, or what happened before, or at Four. We foretell that it will be a great time, so come join in the fun. **For further information, please contact Heather at 301-869-7551. For further information please contact Dick at 301-498-8357 or Bill & Rita at 301-946-2161. If you would like to receive monthly reminders of the Open Sings via e-mail please send a request to Jim Bunch at [jabunch@umich.edu](mailto:jabunch@umich.edu)**

### FSGW Storyswap • Annandale, VA *Saturday, April 9 • 7:30 pm*

At the home of **Barbara Effron** in Annandale. free, open to tellers & listeners, pot luck snacks. 703-323-1783 for rsvps and directions

### FSGW Gospel Sing • Alexandria, VA *Sunday, April 10 • 4-8 pm*

Gospel sings are held the second Sunday of every month at various homes. Singing starts at 4pm and breaks for a covered dish supper at 6pm with more singing after supper. Everyone is welcome! The April Gospel Sing will be at the home of **Nancy Bailey** in the Landmark area of Alexandria, VA. Info/directions: 703-823-5536.

### FSGW Sacred Harp Singing • Arlington, VA *Sunday, April 24 • 4-8 pm*

**St. Peter's Episcopal Church, 4250 North Glebe Rd., Arlington, VA.** FSGW sponsors free group singings of early American hymns, anthems, and fugues in unaccompanied four-part harmony, monthly on the fourth Sunday. We'll sing from the 1991 *Sacred Harp* (loaner books available) from 4 to 6, share a potluck supper, then sing some more. All are welcome. *Please note:* we'll probably be singing in a room downstairs, which in March proved more sonorous than the sanctuaries upstairs.

**Directions:** St. Peter's is one-half mile south of Chain Bridge, on the west side of Glebe Road (crossing from Washington, on your right; from Virginia, on your left). The church is not visible from Glebe Rd. Turn on Tazewell St. to reach the parking lot. Info: 301-229-8534

### CO-SPONSORED EVENTS

#### Glen Echo International Folkdancers • Glen Echo, MD

*Thursdays • 7:30-10:45 pm*

The Glen Echo International Folkdancers meet Thursday nights at the Church of the Redeemer, 6201 Dunrobbin Drive (next to the shopping center across the street from Glen Echo Park). Lesson at 7:30. Request dancing from 9-10:45. Mostly recorded music. No partner or experience necessary, but wear comfortable clothing and soft-soled shoes. **Admission \$5.** Co-sponsored by FSGW. Info: **Jamie at 301-320-7099 or [dancingplanet@erols.com](mailto:dancingplanet@erols.com)**

## FSGW Co-sponsored *continued*

### Family Dance

**Sunday, April 10 • 3 -5 pm**

In Glen Echo Park's Bumper Car Pavilion. The Family Dance program begins its warm weather season at the Glen Echo Park Bumper Car Pavilion. **Susan Taylor** will call a fun and lively afternoon of dances to the music of **Waverley Station** (**Liz Donaldson** on piano and **David Knight** on fiddle). **Admission is still \$5** for the entire afternoon (age 4 and older). The family dance program is a wonderful

opportunity to dance with your kids and your community. Bring your entire family, neighbors, church or synagogue group, birthday party, and girl or boy scout troop. Have a picnic before or after the dance. **For more information, call Jamie at 301-320-7099 or [dancingplanet@erols.com](mailto:dancingplanet@erols.com)**, or see details at [www.dancingplanetproductions.com](http://www.dancingplanetproductions.com). Sponsored by World Music and Dance Institute and cosponsored by FSGW.

### DC Folk & Trad Arts Mini Grant

The next deadline for submitting applications for the DC Commission on the Arts & Humanities' Folk & Traditional Arts Mini-Grant is **April 7!** The Commission is offering quick response small-scaled grants to D.C. based artists, dancers, musicians, scholars, and organizations practicing or supporting folk traditions.

The amount of support for the Folk & Traditional Arts Mini-Grant ranges from \$500 to \$1000 dollars and can be put towards a range of activities, including public programs, performances, lectures, etc. You can obtain more information at the following link: <http://dcarts.dc.gov/dcarts/cwp/view,a,3,q,528167.asp>

## Concerts & Concert Series

### CONCERTS

#### Sundays

#### Maggie's Music Concert • Alexandria, VA

**Sunday, April 3 • 7:30 pm**

Journey to the Heartland-A Celtic-Americana hammered dulcimer extravaganza! Will feature America's four premier hammered dulcimer players: **Ken Kolodner, Jody Marshall, Karen Ashbrook & Maggie Sansone** — all from the Washington D.C. area. Concert will also include: **Grace Griffith** (vocals), **Elke Baker** (fiddle), **Andrea Hoag** (fiddle), **Robin Bullock** (Guitar), **Paul Oorts** (guitar) and **Zan Mcleod** (guitar). Ticketmaster.com, The Birchmere Box Office, 3701 Mt. Vernon Ave, Alexandria, VA 22305. 703-549-7500, <http://www.birchmere.com>.

#### Washington Men's Camerata • Washington, DC Slava! Russian Music for Male Chorus

**Sunday, April 3 • 4 pm**

Music on the program includes everything from Russian chant to sacred masterworks by Rachmaninoff, Chenokov and Tchaikovsky. There will also be Russian Warrior songs, folk songs and a rare choral version of Rachmaninoff's beloved "Prelude in C-sharp minor." You won't want to miss the rare opportunity to hear a full program of Russian music performed by one of the nation's finest men's choruses. At Church of the Epiphany, 1317 G St. NW, Washington, DC. Metro: Metro Center. General admission tickets

are \$25 for adults and \$15 for students. **Tickets may be purchased online at [www.camerata.com](http://www.camerata.com) or by calling 202-364-1064.**

#### Flory Jagoda and Friends • Rockville, MD

**Sunday, April 10 • 3-5 pm**

**Flory Jagoda** is internationally known as the *Keeper of the Flame* for her untiring commitment to transmitting the music of the Sephardim, Jews from Spain and Portugal who were exiled to other parts of the world (notably the Ottoman Empire) following the Spanish Inquisition of 1492. She hails from a musical family in Sarajevo, Bosnia, and learned the songs in Ladino (djudeo-espanyol) from her grandmother, la Nona. Her mission is the continuation of the Ladino language and the songs of the Sephardim. This is a L.I.F.E. (Learning is for Everyone) Lecture Series. Free and open to everyone. At B'nai Israel Congregation, 6301 Montrose Road, Rockville, MD. **For information, contact Marni Meloul, Media Specialist at B'nai Israel, at 301-881-6550, ext. 571.**

#### Slaveya • Washington, DC

**Sunday, April 10 • 3 pm**

**Slaveya** is a women's Balkan vocal ensemble, directed by Tatiana Sarbinska. At St. Thomas' Episcopal Parish, 1772 Church St. NW, near Dupont Circle. **For more information, call 202-707-4834.**





## Concerts & Concert Series *continued*

### Wednesdays

#### BluesWorks & Friends • Bowie, MD

**Wednesday, April 27 • 7 pm**

"Thomas A. Dorsey Concert: A Tribute to a Musical Revolutionary" will feature Dorsey's popular hokum blues, as well as his legendary soul-stirring gospel music. **BluesWorks' Judy Luis-Watson** (piano/vocals) and **Paul Watson** (harmonica/mandolin/vocals) will be joined by **David Cole** (guitar/vocals), **Jaamin' Tempo** (drums), and **Mavis Waters** (vocalist). At Bowie Branch Library, 15210 Annapolis Road, Bowie, MD. 301-262-7000. Free. Supported in part by an artist's grant from Prince George's Arts Council and the Friends of the Bowie Library. [www.bluesworks-band.biz](http://www.bluesworks-band.biz)

### Fridays

#### David Wilcox/Nance Pettit in Benefit Concert • Washington, DC

**Friday, April 22 • 8 pm**

**David Wilcox** and his wife **Nance Pettit** perform songs with the words of ancient mystical poets from their soon-to-be-released "Out Beyond Ideas" CD project. Co-sponsored by Focus and St. Mark's, at St. Mark's Episcopal Church, Third and A Streets, SE (behind the Library of Congress Adams Building) on Capitol Hill. A \$20 donation is requested (on site). Reservations recommended. Prefer email to: [songsforpeace@comcast.net](mailto:songsforpeace@comcast.net) or call 410-992-0632 or 301-270-1613 (indicate number of seats needed). All donations benefit the University of Maryland's Partners in Conflict and Partners in Peacebuilding Projects, [www.cidcm.umd.edu/projects/pic.htm](http://www.cidcm.umd.edu/projects/pic.htm).

More information on [www.davidwilcox.com/dw](http://www.davidwilcox.com/dw)

### Saturdays

#### Doug Mishkin • Washington, DC

**Saturday, April 16 • 8 pm**

Sings the music of Pete Seeger at Temple Micah's 8th annual NTFY scholarship fundraiser. Temple Micah is at 2829 Wisconsin Avenue NW, Washington, DC. Tickets: Adults, \$25; Students, \$15. For info, call 202-342-9175 or e-mail [office@templemicah.org](mailto:office@templemicah.org).

#### The Washington Area Folk Harp Society • Laurel, MD

**Saturday, April 23 • 7:30 pm**

"Fingerz on Stringz", a concert of harps featuring jazz, and traditional music from around the world! With **Sue Richards**, **Fynesound**, **Port Righ**, **Michael O'Hanlan** and **Kathy Chanik**, **Compass Rose** and a 20-harp finale. At Capitol College Auditorium, Laurel, MD, conveniently located off the Baltimore

Washington Parkway. Adults \$12. Students and Seniors \$10. Concert will benefit the WAFHS Scholarship Fund. For info and directions visit [www.wafhs.org](http://www.wafhs.org) or call 301-528-1541.

#### BluesWorks • College Park, MD

**Saturday, April 30 • 12noon - 1 pm**

The Clarice Smith Performing Arts Center's Courtyard stage will feature **BluesWorks'** traditional and original acoustic blues, boogie, n' jazz at Maryland Day 2005. The band: **Judy Luis-Watson** (piano, vocals), **Paul Watson** (harmonica, mandolin, vocals), **Mark Puryear** (guitar, vocals), and **Jaamin' Tempo** (percussion, drums). Free. [www.maryland-day.umd.edu](http://www.maryland-day.umd.edu); [www.bluesworksband.biz](http://www.bluesworksband.biz)

#### Karen Collins & Backroads Band • Silver Spring, MD

**Saturday April 30 • 9 pm-12:30 am**

Early country and honky tank music at the Half Moon BBQ 8235 Georgia Ave., Silver Spring, MD. Admission \$7. FFI: 301 585-1290 or <http://www.halfmoonbbq.com>

#### Balalaika 2005 • VA and MD

**Saturday, May 14 • 7:30 pm.**

Northern Virginia Community College, 8333 Little River Tnpk, Annandale, VA.

**Sunday, May 15 • 3 pm.**

F. Scott Fitzgerald Theatre at Rockville Civic Ctr, 603 Edmonston Dr., Rockville, MD.

**The Washington Balalaika Society** will present two identical performances of folk and semi-classical music from Russia and Eastern Europe. These concerts will feature the finest Russian folk orchestra in the U.S. today as well as outstanding guest artists. Soloists include balalaika virtuoso, **Andrei Saveliev**, domra concertmistress **Evgenia Tochenaya**, bayanist **Vladimir Zakharevich**, soprano **Anyta Titova**, and flautist **Amy Prussing**. **Svetlana Nikonova**, from St. Petersburg will conduct.

Tickets: \$20 general admission/\$18 seniors and students, \$15 for groups of 10 or more. To reserve tickets by phone: call 703-644-9151; for purchase by check: send stamped return envelope to WBS, 7421 Calamo St., Springfield, VA 22150; For purchase by credit card: order through the web site [www.balalaika.org](http://www.balalaika.org). Information and group rates: 703-644-9151.



**Concerts & Concert Series** *continued***CONCERT SERIES****Sundays****Focus Concert Series - Alexandria, VA****Sunday, April 10 • 7 pm**

Priscilla Herdman headlines and Paul Iwancio and Nita Paul open at the Focus Inn Alexandria at 2280 N. Beauregard St. (Church of the Resurrection). \$12 general, \$10 members. **Contact: Herb at 703-548-8699, herbcl@earthlink.net or log onto [www.focusmusic.org](http://www.focusmusic.org) for more details.**

**Mondays****Institute of Musical Traditions (IMT) Series • Rockville, MD****Mondays • 7:30 pm unless otherwise noted**

New venue is St. Mark's Presbyterian Church, 10701 Old Georgetown Road, Rockville, MD.

**For tickets, please call 301-754-3611 or go to <http://www.imtfolk.org>**

**April**

- 4 Bob Zentz and *Pirates Royale*
- 11 Joe Glazer retrospective with Mary Cliff
- 18 Robin Huw Bowen w. Moch Pryderi opening
- 23 Jimmy Gaudreau & Orrin Star (Saturday)
- 25 Amilia Spicer and TBA

**Tuesdays****Folk Club of Herndon Reston • VA****Tuesday, April 19 • 7 pm**

James Keelaghan's most celebrated songs tell of extraordinary events through the eyes of ordinary people. After eight albums, three Juno nominations, a Juno award and 17 years as one of Canada's best-known exports on the folk circuit, Keelaghan introduces American audiences to *Then Again*. Hosted by the Folk Club of Reston-Herndon at the Tortilla Factory Restaurant, 648 Elden St. Doors open 6 pm. \$10 (\$9 Folk Club members). **703-435.2402 or [cluba-coustic@cox.net](mailto:cluba-coustic@cox.net)**

**Wednesdays****Baldwin's Station • Sykesville, MD****Show time 8 pm**

At 7618 Main St, Sykesville, MD. For descriptions of the shows and current information, see our web page on the Internet: [www.baldwinsstation.com](http://www.baldwinsstation.com)

**Tickets and directions 410-795-1041.**

**April**

- 6 Robert Hazard

- 13 Barb Martin & Mac Walter
- 20 James Keelaghan
- 27 The Nields

**Focus Concert Series • Rockville, MD****Wednesdays • 8 pm**

At the Focus Inn Rockville with "Focus Presents Vic's Music Corner" at O'Brien's BBQ, 387 E. Gude Drive. \$15 general, \$12 members.

**April**

- 13 Johnsmith headlines and Susan Greenbaum opens
- 27 Gina DeSimone (CD release) and Jen and Scott Smith of *Naked Blue*

**Contact: David at [spitzerd@earthlink.net](mailto:spitzerd@earthlink.net), O'Brien's at 301-762-3395 or [www.focusmusic.org](http://www.focusmusic.org).**

**Steve Key's Music Showcase • Alexandria VA****Wednesdays • 7-10 pm**

Held in the Starlight Room at Stella's Restaurant, 1725 Duke St., Alexandria VA 22314, 703-519-1946, [www.stellas.com](http://www.stellas.com). Near King Street Metro, validated parking in garage. Full dinner menu, full bar too. Featured set 8:15-9 pm, others play 3-song sets. No cover, but we pass the hat during the featured set. **Updates at [www.stevekey.com](http://www.stevekey.com).** Steve Key, Performing Songwriter and Showcase Host

**April**

- 6 Stella Schindler, singer-songwriter with guitarist Paul Miller
- 13 Piano Night featuring Joanne Stato from Baltimore
- 20 Michael Bowers & Siobhan Quinn, husband-wife folksingers
- 27 Sam Hensley, writer of spiritual and uplifting songs

**Thursdays****Steve Key's Music Showcase • Severna Park MD****Thursdays • 7-10 pm**

Held at Corky's Hard Bean Cafe, 562B Ritchie Highway (Park Plaza Shopping Center), Severna Park MD 21146, 410-518-6077. Featured set 8:15-9pm, others play 3-song sets, \$3 cover. **Updates at [www.stevekey.com](http://www.stevekey.com).**

**April**

- 7 Laura Baron & Pat Quinn, songwriting duo on guitar, bass and piano
- 14 Dan Hart, comic songwriter featured on Dr. Demento radio show
- 21 Tony Denikos, songwriter in the John Prine style
- 28 J.P. Jones, touring artist from Rhode Island

## Concerts & Concert Series *continued*

### Fridays

#### The Cellar Stage at St. John's • Baltimore, MD *Fridays • 8:30 pm*

Co-sponsored by Uptown Concerts and St. John's of Hamilton, at the United Methodist Church, 5315 Harford Rd. Access the large parking lot from Gibbons Avenue. **Information: 410-922-5210**

### April

- 15 **Andrew McKnight & Jonathan Byrd**
- 22 **Cathryn Craig & Brian Willoughby** (of the *Strawbs*)
- 29 **Jody Marshall & Friends**, CD Release.

#### Performing at the New Deal Café • Greenbelt, MD

*Fridays or Saturdays as noted • 8-11 pm  
unless otherwise noted*

The New Deal Café is at 13 Centerway. Roosevelt Center, Greenbelt, MD. **Telephone 301-474-5642**  
The New Deal Café is a cooperative coffeehouse and café with an intimate community atmosphere.  
[www.newdealcafe.com](http://www.newdealcafe.com)

### April

- 1 (Friday) **First Friday open mic**. Sign up begins at 7pm
- 9 (Saturday) **Doug Way**, Texas road musician, joined by **Bob Hipsley** and **Nick Brenzi**.
- 15 (Friday) **Mike Elosh** is a Washington, D.C. based singer/songwriter.
- 16 (Saturday) 2-11 pm. **The 5th annual Crazy Quilt Music Festival**. Good food, good company and great music.
- 23 (Saturday) Traditional acoustic Blues with guitarist/vocalist **Ian Morrison** and harpist **Waverly Milor**.

#### 333 Coffeehouse • Annapolis, MD

*Friday, April 15 • 8 pm*

Lea with **Zoe Mulford** opening. 333 Coffeehouse is a nonprofit alcohol-free listening room run by volunteers. It offers a variety of local and regional talent on the third Friday of every month at the Unitarian Universalist Church of Annapolis, 333 DuBois

Avenue, off Bestgate Road. Admission is \$10; \$8 for students and seniors. **For more information go to [www.fsgw.org/333/](http://www.fsgw.org/333/) or call 410-923-4667.**

### Saturdays

#### The Potter's House • Washington, DC

*Fridays • 8 & 9 pm*

Sounds of Hope/Good Music & Good Food for a Good Cause! Friday nights in April. Dinner available beginning at 7 pm, suggested donation \$10

Performances at 8 & 9 pm. 1658 Columbia Rd NW (Adams Morgan) Washington, DC 20009. **202-232-5483. [www.PottersHouseDC.org](http://www.PottersHouseDC.org).**

#### Cheryl & David House Concert • Rockville, MD

*Saturday, April 9 • 8 pm*

**John Flynn** will perform. *Sing Out* magazine writes "John Flynn is as close as we come these days to a live Phil Ochs." We encourage you to visit his web site in order to hear some of his songs: [www.JohnFlynn.net](http://www.JohnFlynn.net). Folk 'N Great Music [www.folkngreatmusic.org](http://www.folkngreatmusic.org)

#### Shepherdstown Music and Dance International Concert Series • WV

*Saturday, April 23 • 8 pm*

**The Mystic Warriors** play Music of the Andes. Founded by **Andres and Marco Mallea** in Washington, DC in 1993, and later joined by **Omar Martinez**. Playing a rich synthesis of traditional music of the Inca on the acoustic instruments of the region including the *paku siku* (a double-rowed pan flute), *quena* (a traditional end-blown flute), *charango*, *quatro*, *guitarron* and the *bombo leguero* (log drum); they delight audiences with their fluid virtuosity. In a rare totally acoustic event, these fine musicians will have you feeling like you are flying with the condors. Admission \$12 adults, \$10 SMD members and seniors and \$6 children. At Shepherd College's Frank Center. **For more information call: Joanie Blanton 304-263-2531 or [updf@earthlink.net](mailto:updf@earthlink.net). On the web at [www.smad.info](http://www.smad.info)**



# Dances

## CONTRA

### Sundays

The FSGW Sunday Night Dances are listed on page 2.

### Bear Dancers Sunday Contra Dance Series • DE

The Bears are migrating for dance weekend season! We will return for special "one-time" events rather than a monthly series. Please check [www.baltwirl.com](http://www.baltwirl.com) or call 302-838-0493 x3 for details.

### Wednesdays

#### BFMS Lovely Lane Contra Dance • Baltimore, MD Wednesdays, 8-11 pm

Lovely Lane Church, 2200 St. Paul St., Baltimore, MD. Sponsored by the Baltimore Folk Music Society. All dances are taught and walked through. Beginners are always welcome and are encouraged to arrive promptly at 8 pm. Nationally known musicians and callers appear regularly. Free beginners' workshops on 2nd and 4th Wednesdays at 7:30. Admission is \$7 for BFMS/FSGW members, \$10 for non-members. \$2 student discount. Info: [www.bfms.org](http://www.bfms.org) or Greg Frock at 410.433-4419.

### April

- 6 Dave Colestock, visiting from PA, will call an evening with our own *Mortal Wombat*
- 13 Fun and energetic, Beth Molaro is back and will pull out all the stops calling to *Waverley Station*
- 20 You can look forward to Steve Gester's smooth calling to *Off'n Ensemble*
- 27 The multi-talented Susan Taylor presents an evening with up-and coming callers, with music by *SKAM Milk*. Let's all turn out to encourage the area's newest performers, and help them unfurl their wings.

### Fridays

#### Friday Night Contra Dance • Glen Echo, MD Fridays • 8:30-11:30 pm

The Friday Night Dancers, in cooperation with the National Park Service, Montgomery County & the Glen Echo Park Partnership for Arts and Culture sponsor contra dances with occasional squares and couple dances to live music in Glen Echo Park's Spanish Ballroom located at MacArthur Blvd. and Goldsboro Rd. The new dancer class starts at 7:30 pm. Dances start at 8:30. Admission price is \$8.

To play for or call a dance, send an email to [fndbooking@folkdancer.com](mailto:fndbooking@folkdancer.com). For other information, see our webpage at <http://fnd.folkdancer.com>

### April

- 1 Mark Sherman calls to *Atlantic Crossing* - (Brian Perkins, Peter Macfarlane, Rick Klein, Viveka Fox). Bringing traditional New England, Quebecois and Maritime tunes to life with creativity, emotion, and lots of plain fun.
- 8 Dick Bearman calls with the fabulous *Glen Echo Open Band*.
- 15 Beth Molaro (one of our most requested callers) with *Notorious* - contradance guitar hero Larry Unger, one of the most exciting and versatile young violinists Eden MacAdam-Somer, and Glen Echo's favorite bass player Ralph Gordon.
- 22 Rhiannon Giddens (from Charlottesville) calls to *Government Contra Act* - Kendall Rogers (piano, bodhran, whistles, feet), Andrew Marcus (accordion, doumbek), Michael Ferguson (hammered dulcimer, trombone, didgeridoo)—Imaginative local musicians making their FND debut with exciting, jazzy interpretations of contra music.
- 29 Susan Taylor calls with Joe DeZarn (fiddle), Liz Donaldson (piano), Ralph Gordon (bass). Three of the best locally based musicians show why Washington is a world center for contra dance and its music.

#### SMTMD Contra Dance • Chaptico, MD Friday, April 9 • 7:30-10 pm

At Christ Episcopal Church Parish Hall on Zach Fowler Road in Chaptico, MD off State Route 234. The caller will be Ann Fallon and live music will be provided by the *Southern Maryland Open Band*. Sponsored by Southern Maryland Traditional Music and Dance. For more information and/or directions visit [www.smtmd.org](http://www.smtmd.org) or call 301-475-5522.

#### Locust Lane Contra • Harrisburg, PA 2nd, 4th & sometimes 5th Fridays • 7:30 pm

Contra Dancing Keeps on Going! Lively music, community based style from Celtic and Appalachian heritage, easy format. Come singly or whole family. All ages and experience levels welcome. Light refreshments provided, snack donations add to the atmosphere. 7:30 to 8pm free new dancers workshop, dance 8-11 pm. Students \$4, adults \$9 At 5501 Locust Lane. Call Dave Felix for more info 975-2758 or <http://locustlanecontra.freesevers.com/>

### Saturdays

## Dances continued

### Elverson, PA Contra Dance

**Saturday, April 2 • 7:30-10:30 pm**

Fern Bradley calls to *The Commotions*. At St. Mary's Episcopal Church, 61 Morningside Dr., Elverson, PA (Approx. 3 miles east of downtown Elverson). For more information, contact Nancy Keeler at 610-780-5667 or visit Bill Frysinger's website at [www.frysinger.com/dance/#elverson](http://www.frysinger.com/dance/#elverson)

### Second Saturday Contra • Pikesville, MD

**April 9 • 8-11 pm**

Free dance lesson at 7:30. \$10/\$8 BFMS members & affiliates; \$2 student discount. St. Marks on the Hill Parish Hall, 1620 Reisterstown Rd., Pikesville, 0.5 miles from Exit 20 South, Baltimore Beltway. Sponsored by the Baltimore Folk Music Society. Info: [satdance@bfms.org](mailto:satdance@bfms.org), [www.bfms.org](http://www.bfms.org)

### Bluemont Contra • Purcellville, VA

**Saturday, April 16 • 8-11 pm**

Come welcome spring with the Bluemont Dance, at the Purcellville Skating Rink! If the weather isn't springlike, the music will keep us plenty warm! TBA calls to *Les Belettes*. Be sure to check the website for directions and info on the rest of the season's schedule. Beginners' workshop at 7:30, dance 8-11. Admission: \$7, \$5 for Bluemont friends and students. Info: [www.bluemont.org](http://www.bluemont.org) or 703-777-6306

### Lancaster Contra Dance • PA

**Saturday, April 16 • 8-11 pm**

PGW with Shane Knudsen calling. St. John's Episcopal Church 321 W. Chestnut St. Lancaster, PA. Beginners workshop at 7 pm. Dance 8-11 pm. For information call Shane at 717-390-7277 or email Shirley at [sam@mcc.org](mailto:sam@mcc.org). \$7/\$4

### ATDS (Annapolis) 3rd Saturday Contra • Severna Park, MD

**Saturday, April 23 • 8-11 pm**

Free dance lesson at 7:30 pm, \$7 members, \$10 non-members. Steve Gester calls to *Some Assembly*. At The Holy Grounds Youth Center at the Community Center, 623 Baltimore-Annapolis Blvd., Severna Park, MD. Sponsored by the Annapolis Traditional Dance Society. Please check the website for directions, call, or email for more information: <http://www.contradancers.com/atds>, or 410-451-1791, or [pshaf@yahoo.com](mailto:pshaf@yahoo.com)

### 5th Saturday Contra Dance • Frederick, MD

**Saturday, April 30 • 8 pm**

George Marshall and Tim Van Egmond share the calling duties when *Swallowtail* plays. Dance is held at the Trinity school near Harry Grove Stadium. Admission \$7; under 16 \$3. Beginners' workshop at 7 pm; dance starts at 8 pm.

Info/directions: [www.contradancers.com](http://www.contradancers.com) or call Boe Walker at 301-694-6794.

## ENGLISH COUNTRY

### Mondays

### English Country Dance (BFMS) • Pikesville, MD

**Mondays • 8-10:30 pm**

English Country Dancing is joyous, lively movement to elegant music in a friendly, informal setting. The figures are simple, and each dance is taught and walked through. New dancers are always welcome. Beginners' workshop on the first Monday promptly at 7:30 pm. Sponsored in part by the Maryland State Arts Council. Admission: \$6 for Members, \$8 for Non-members, \$2 student discount. St. Mark's on the Hill Parish Hall, 1620 Reisterstown Road, 0.5 miles from Exit 20 South, Baltimore Beltway. Info: Mike Franch at 410-889-3252.

### April

- 4 Carl Friedman calling to Liz Donaldson, Colleen Reed and Becky Ross.
- 11 Rich Galloway to Dave Wiesler, Amy Ksir, and Tom Rhoads. The Baltimore premiere of this group.
- 18 Diane Schmit calling to Robbin Schaffer, Marty Taylor, and Edie Stern
- 25 Sharon McKinley calling to Jonathan Jensen, Paul Oorts, and Carl Friedman.

### Tuesdays

### English Country Dance (CDSS) • Herndon, VA

**2nd and 4th Tuesdays • 7:45-10pm.**

At Harding Hall, 730 Jackson St. Herndon, VA. Workshop includes figures, phrasing and style. Live music (guest musicians welcome— call in advance). \$3. No partner or experience necessary. Info/musicians: Barbara Harding at 703-437-3615.

### April

- 12 Donn Williams, guitar
- 26 Dan Gillespie, recorder







The Folklore Society of Greater Washington presents the annual

# Washington Spring Ball

Saturday, May 21, 2005

at

Whitby Gymnasium, National Cathedral School, Washington, D.C.

Music by : *Terpsichore*

*Elke Baker*, fiddle, *Liz Donaldson*, piano, and  
*Ralph Gordon*, bass, with *Barbara Heitz*, flute/piccolo



\$27 for members of FSGW, BFMS or CDSS, \$30 for nonmembers

00-4:00 p.m.

Nearby (

y  
ed by Laurie and Jim Mielke

Reception 7:30 p.m.



Dance 8:00 p.m.

Light refreshments served during break

## The Program

<i>Auretti's Dutch Skipper</i>	<i>Bellamira</i>	<i>Corelli's Maggot</i>	<i>Easter Morn</i>
<i>Fandango</i>	<i>The Homecoming</i>	<i>Hundson House</i>	<i>Jack's Maggot</i>
<i>Leatherlake House</i>	<i>Margaret's Waltz</i>	<i>Michael and All Angel's</i>	
<i>Mr. Isaac's Maggot</i>	<i>Mrs. Savage's Whim</i>	<i>Siege of Limerick</i>	<i>Trip to Kilburn</i>
<i>Trip to Tunbridge</i>	<i>Turning by Threes</i>	<i>When Laura Smile</i>	<i>Winter Memories</i>

*Only soft-soled shoes may be worn on the dance floor*

At the ball, dances will be prompted for a few rounds, but not walked through. Work scholarships are available.

For more information, E-mail Roger Broseus at [English@fsgw.org](mailto:English@fsgw.org) or call Thomas Spilsbury at 301-585-7857

Send registration to:  
Roger W. Broseus  
10411 Farnham Drive  
Bethesda, MD 20814-2219



Directions to the pre-ball practice,  
open house dinner, and Ball will be  
mailed with the program booklet or  
E-mailed with confirmation notice.



The Folklore Society of Greater Washington's 2005 *Washington Spring Ball*

Male Female Couple

Name(s) as you wish them to appear on name tag(s) \_\_\_\_\_

Address \_\_\_\_\_

Phone \_\_\_\_\_

City \_\_\_\_\_

State \_\_\_\_\_

Zip \_\_\_\_\_

E-mail \_\_\_\_\_

Check here to receive confirmation via E-mail. Hold instruction booklet at ball or ball practice (no SASE necessary)

Reserve \_\_\_\_\_ places at \$27 for members of FSGW

BFMS

CDSS

Reserve \_\_\_\_\_ places at \$30 for nonmembers

Overnight hospitality needed.

Allergies? \_\_\_\_\_

Nonsmoking

Separate beds

Can house \_\_\_\_\_ people.

Enclose check, payable to FSGW, with a self-addressed, business-size envelope with appropriate postage (37¢ plus an additional 23¢ stamp for each dance booklet after the first); if no SASE is provided, booklet(s) will be held at the door.

# April 2005

Sunday	Monday	Tuesday	Wednesday	Thursday
<p>The first of April is the day we remember what we are the other 364 days of the year.</p> <p style="text-align: right;">Mark Twain</p>				
<b>3</b> 3 Scottish Jam/Royal Mile Pub 3 Glen Echo Waltz 4 Men's Camerata Concert <b>7:30 FSGW SUNDAY CONTRA GAYE</b> <b>FIFER &amp; ATLANTIC CROSSING</b>  <b>FSGW POTOMAC RIVER SINGING CONVENTION</b>	<b>4</b> 7:30 Bethesda Intl Dance 7:30 Bethesda Sacred Circle Dance 7:30 Jammin' Java 8 IMT Concert 8 Baltimore English Country 8 NW DC Scottish Country	<b>5</b> 7:30 Silver Spring Israeli Dance 7:30 Herndon Reston Folk Club 7:30 Handbells 7:30 Arlington Intl Dance <b>8 FSGW BOARD MEETING</b> 8 Arlington Circle Dance 8 Greenbelt Scottish Country 8 Silver Spring Squares 8 Sea Chantey Sing Royal Mile	<b>6</b> 7 Steve Key's Music Showcase 7 Alexandria Scottish Country 7:30 Swiss Folklore Group <b>8 FSGW ENGLISH COUNTRY</b> 8 Baltimore Contra (Lovely Ln) 8 Columbia Intl Dance 8 Baldwin's Station Concert 8:15 Potomac Israeli Dance	<b>7</b> 7 Steve Key's Music Showcase 7 Fredricka's Jam Session <b>7:30 FSGW ENGLISH COUNTRY</b> 7:30 Cheverton's Music 8 Mt. Vernon 8 Foggy Bottom 8 American 8 Circle
<b>10</b> 1 Kid's Irish Session 2 CABOMA Jam <b>3 FAMILY DANCE, GLEN ECHO</b> 3 Flory Jagoda Concert 3 Slaveya in Concert 3:30 Ballroom Tea Dance <b>4 FSGW GOSPEL SING</b> 4 Alpine Dancers 7 Focus Concert <b>7:30 FSGW SUNDAY CONTRA COMPANY OF CALLERS &amp; WAVERLEY STATION</b> 8 Milonga (Argentine Tango)	<b>11</b> 6:30 Children's Irish Music Jam 7:30 Bethesda Intl Dance 7:30 Bethesda Sacred Circle Dance 7:30 Jammin' Java 8 IMT Concert 8 Baltimore English Country 8 NW DC Scottish Country	<b>12</b> 7:30 Herndon Reston Folk Club 7:30 Silver Spring Israeli Dance 7:45 Herndon English Country 8 Arlington Intl Dance 8 Arlington Circle Dance 8 Greenbelt Scottish Country 8 Silver Spring Squares 8 WST Speakeasy 8:30 Hot Squares!	<b>13</b> 7 Steve Key's Music Showcase 7 Laurel Jam Session 7:30 Alexandria Scottish Country 7:30 Swiss Folklore Group <b>8 FSGW ENGLISH COUNTRY</b> 8 Baltimore Contra (Lovely Ln) 8 Columbia Intl Dance 8 Sea Chantey Pub Sing/Balt. 8 Baldwin's Station Concert 8 Focus Concert 8:15 Potomac Israeli Dance	<b>14</b> 7 Steve Key's Music Showcase 7 Fredricka's Jam Session 7:30 FSGW ENGLISH COUNTRY 7:30 Cheverton's Music 8 Mt. Vernon 8 Foggy Bottom 8 American 8 Circle
<b>17</b> 2 BFOTM Picnic/DE 3 Glen Echo Waltz 3 Dupont Music Circle <b>7:30 FSGW SUNDAY CONTRA: JOSEPH PIMENTEL &amp; FLAPIACK</b>	<b>18</b> 7:30 Bethesda Intl Dance 7:30 Bethesda Sacred Circle Dance 7:30 Jammin' Java 8 IMT Concert 8 Baltimore English Country 8 NW DC Scottish Country	<b>19</b> 7:30 Silver Spring Israeli Dance 7:30 Herndon Reston Folk Club 8 Arlington Intl Dance <b>8 FSGW HOUSE CONCERT- "PUB SING"</b> <b>SPECIAL GUEST DEREK SEED</b> 8 Arlington Circle Dance 8 Greenbelt Scottish Country 8 Silver Spring Squares	<b>20</b> 7 Steve Key's Music Showcase 7 Semi Monthly Fiddlers' Group 7 St. Elmo's Open Mic Alexandria 7:30 Alexandria Scottish Country 7:30 Swiss Folklore Group <b>8 FSGW ENGLISH COUNTRY</b> 8 Baltimore Contra (Lovely Ln) 8 Columbia Intl Dance 8 Baldwin's Station Concert 8:15 Potomac Israeli Dance	<b>21</b> 12n Story 7 Steve Key's Music Showcase 7 Fredricka's Jam Session <b>7:30 FSGW ENGLISH COUNTRY</b> 7:30 Cheverton's Music 8 Mt. Vernon 8 Foggy Bottom 8 American 8 Circle 8 Sea C
<b>24</b> 2 CABOMA Jam/VA 3 Glen Echo Dance Potpourri <b>4 FSGW SACRED HARP</b> 4 Alpine Dancers 7 Irish Seisiun/Royal Mile Pub <b>7:30 FSGW SUNDAY CONTRA SUSAN TAYLOR &amp; ALAN JABBOUR JOHN SCHWAB</b>	<b>25</b> 7:30 Bethesda Intl Dance 7:30 Bethesda Sacred Circle Dance 7:30 Jammin' Java 8 IMT Concert 8 Baltimore English Country 8 NW DC Scottish Country	<b>26</b> 7:30 Silver Spring Israeli Dance 7:30 Herndon Reston Folk Club 7:45 Herndon English Country 8 Arlington Intl Dance 8 Arlington Circle Dance 8 Greenbelt Scottish Country 8 Silver Spring Squares	<b>27</b> 7 Steve Key's Music Showcase 7 Laurel Jam Session 7 BluesWorks & Friends Concert 7:15 Women's A Capella Chorus 7:30 Alexandria Scottish Country 7:30 Swiss Folklore Group <b>8 FSGW ENGLISH COUNTRY</b> 8 Baltimore Contra (Lovely Ln) 8 Columbia Intl Dance 8 Baldwin's Station Concert 8 Focus Concert 8:15 Potomac Israeli Dance	<b>28</b> 12n Story 7 Steve Key's Music Showcase 7 Fredricka's Jam Session <b>7:30 FSGW ENGLISH COUNTRY</b> 7:30 Cheverton's Music 8 Mt. Vernon 8 Foggy Bottom 8 American 8 Circle

05

Thursday	Friday	Saturday
	<b>1</b> 7 SAW Open Mic in Olney 7 Semi Monthly Fiddlers' Group 8 Potter's House Concert (& 9:30) 8:15 Benefit Dance for Tinel Ghetl MD <b>8:30 FSGW OPEN SING</b> 8:30 Friday Night Contra	<b>2</b> 1 Archie Edwards Blues Jam 5:30 Norwegian Dance House Party (also 7:30) 8 Elverson, PA Contra 9 WSDC Swing Dance <b>FSGW POTOMAC RIVER SINGING CONVENTION</b>
Key's Music Showcase Irish Session <b>W INTL FOLKDANCE</b> Chase Intl Folk Dance Vernon Intl Folk Dance Bottom Morris Men ican Balalaika Symphony Dance/VA	<b>8</b> 7:30 Acoustic Coffeehouse Mt Vernon 8 Potter's House Concert (& 9:30) 8 Rockville House Concert 8 Harrisburg, PA Contra 8 Drumming Circle/WV 8:30 Friday Night Contra 8:30 Greenbelt Intl Folk Dance	<b>9</b> 10 am Hambo Workshop 1 pm Archie Edwards Blues Jam <b>7:30 FSGW STORYSWAP</b> 7:30 Chaptico Contra 7:30 Fairfax Ceili 7:45 Burke Circle Dance 8 Baltimore Contra (St. Mark's) 8 Silver Spring English Country 8 Cheyl & David House Concert 8:15 Israeli Oldies Party
Key's Music Showcase Irish Session <b>W Intl Folkdance</b> Chase Intl Folk Dance Vernon Intl Folk Dance Bottom Morris Men ican Balalaika Symphony le Dance/VA	<b>15</b> 8 Potter's House Concert (& 9:30) 8 Cellar Stage 8 333 Coffeehouse 8:30 Friday Night Contra 8:30 Greenbelt Intl Folk Dance	<b>16</b> 1 Archie Edwards Blues Jam 7 Scandia DC Dance (MD) 7 Lancaster Contra 7:30 Folk Harp Society Concer <b>8 FSGW MONTHLY PROGRAM:</b> <b>JOE JENCKS - LABOR MUSIC</b> 8 Annapolis Contra 8 Bluemont Contra 8 Herndon English Country Dance 8 Doug Mishkin Concert 8:15 Greenbelt Israeli Dance 9 WSDC Swing Dance
elling @NMAI Key's Music Showcase Irish Session <b>W INTL FOLKDANCE</b> Chase Intl Folk Dance Vernon Intl Folk Dance Bottom Morris Men ican Balalaika Symphony Dance/VA hantey Pub Sing Annapolis	<b>22</b> 8 Harrisburg Contra 8 Cellar Stage 8 Potter's House Concert (& 9:30) 8 David Wilcox/Nancy Pettit Benefit Concert 8:30 Glen Echo Contra 8:30 Greenbelt Intl Folk Dance 8 Drumming Circle/WV	<b>23</b> 11 am Storytelling @NMAI (& 1 pm) 1 pm Archie Edwards Blues Jam 1:30 Hammer Dulcimer Jam 7:30 IMT Concert 7:45 Burke Circle Dance 8 ATDS Contra 8 Shepherdstown Music & Dance Int'l Concert Series 8:15 Greenbelt Israeli Oldies Dance
elling @NMAI Key's Music Showcase Irish Session <b>W INTL FOLKDANCE</b> Chase Intl Folk Dance Vernon Intl Folk Dance Bottom Morris Men ican Balalaika Symphony Dance/VA	<b>29</b> 8 Cellar Stage 8:30 Glen Echo Contra 8:30 Greenbelt Intl Folk Dance	<b>30</b> 12n BluesWorks Concert 1 Archie Edwards Blues Jam 8 Frederick Contra 8 Benefit Evening with Strauss Ball <b>8 FSGW HOUSE CONCERT &amp; SINGAROUND</b> <b>WITH MIKE AGRANOFF</b> 9 Karen Collins & Backroads Band

## FSGW ADVANCE NOTICE

**Saturday May 21 • 8 pm**

### Washington Spring Ball

Whitby Gymnasium at the National  
Cathedral School (Washington, DC)

### 25TH WASHINGTON FOLK FESTIVAL

**June 4 & 5, 2005**

**Glen Echo Park, Glen Echo, MD**

### 41ST ANNUAL FSGW GETAWAY

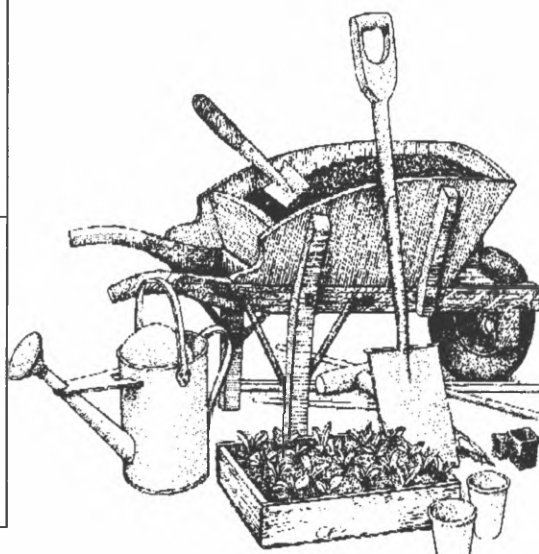
**October 14-17, 2005**

**Camp Ramblewood, MD**

### 42ND ANNUAL FSGW GETAWAY

**NOVEMBER 3-5, 2006**

**West River Camp, Edgewater, MD**



## DRIVING & MASS TRANSIT DIRECTIONS TO FREQUENT VENUES:

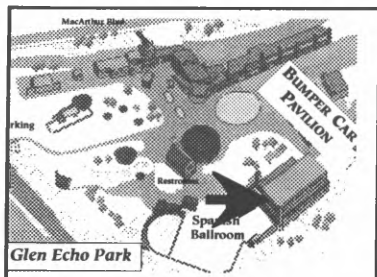
### Washington Ethical Society (WES)

**Auditorium.** 7750 16th St., NW, just south of the intersection of Kalmia Rd. and 16th St., about four blocks inside the DC/MD line.

**From the Beltway:** Take the Georgia Avenue South exit. Stay in either right lane. Go 0.4 miles from the exit ramp, where the right lanes curve and put you on 16th St South. Follow 16th past East-West Hwy (Rte 410); cross the MD/DC line at Portal Dr. Kalmia Road is the first traffic signal south of the line, and WES is the second building on the right after you cross Kalmia. You may park on Kalmia Road by turning right at the light, or on either side of 16th St.

**By Metro:** Red Line to Silver Spring. Exit and walk southwest on Colesville Road two blocks to the traffic circle; cross 16th Street, then walk south 4 blocks on 16th Street to the Washington Ethical Society, 7750 16th St., the second building on the right after Kalmia Road, NW. If you'd rather not walk, an S-4 Metrobus will deliver you to the corner of Kalmia Rd. and 16th St.

**Spanish Ballroom/Bumper Car Pavilion, Glen Echo Park.** 7300 MacArthur Blvd. at Goldsboro Rd, in Glen Echo, MD.



The Bumper Car Pavilion is located just past and to the right of the carousel.

#### From the Beltway:

**MARYLAND SIDE:** at 2-lane Exit 40 take the left fork for Cabin John Parkway. Where Cabin John merges with Clara Barton

Pkwy, move into the left lane, under the overhang.

**VIRGINIA SIDE:** get into the far right hand lane at the top of the bridge. At the first fork, bear right. Stay in the left lane; watch for Cabin John traffic merging from the right at the overhang.

**MD/VA:** Watch for signs to MacArthur Blvd. Make a very sharp hairpin turn and move immediately into the right lane. At the T intersection/stop sign, turn left onto MacArthur Blvd. Upper parking lot on the left. For lower parking lot, go around the small traffic circle and make the first left onto Oxford St.

**By public transportation:** Take the #29 bus from the Friendship Heights Metro Station. Ask the driver to let you know when to get off for Glen Echo Park. The bus stops running before the dance ends. Ask the dance coordinator to announce you need a ride. We've never left anybody at the park. Last bus leaves Friendship Heights Metro at 7:30 pm. *In the event of inclement weather, call the Park at 301-320-2330 after 3 pm for possible cancellation if the Park closes.*

### Glen Echo Town Hall

6106 Harvard St., Glen Echo, MD:

#### From the Beltway:

**MARYLAND SIDE:** at 2-lane Exit 40 take the left fork for Cabin John Parkway. Where Cabin John merges with Clara Barton Pkwy, move into the left lane, under the overhang.

**VIRGINIA SIDE:** get into the far right hand lane at the top of the bridge. At the first fork, bear right. Stay in the left lane; watch for Cabin John traffic merging from the right at the overhang. **MD/VA:** Watch for signs to MacArthur Blvd. Make a very sharp hairpin turn and move immediately into the right lane. At the T intersection/stop sign, turn left onto MacArthur Blvd. Go around the small traffic circle. Third left is Harvard Ave.

**PLEASE NOTE:** Please park in the lot behind the hall, on University Drive, or on the east side of MacArthur, NOT on Harvard Street.

## FSGW Board 2004-2005

Anne Sergeant, *president*  
Betsy Platt, *vice-president*  
Tom Spilsbury, *treasurer*  
April Grastorf, *secretary*  
Charlie Pilzer, *program*  
Charlie Baum, *special events*  
Janine Smith, *dance*  
Lynn Pastore, *membership*  
Lesley Frank, *publications*  
Members-at-Large:

Tim Livengood,  
Tom Tucker,

president@fsgw.org  
vicepresident@fsgw.org  
treasurer@fsgw.org  
secretary@fsgw.org  
program@fsgw.org  
special@fsgw.org  
dance@fsgw.org  
members@fsgw.org  
newsletter@fsgw.org

board2@fsgw.org  
board1@fsgw.org

301-270-4553  
301-320-7099  
301-585-7857  
703-978-2774  
301-565-8818  
301-587-2286  
301-926-9142  
301-577-0745  
301-595-8806

301-805-8865  
703-313-4964

### WASHINGTON FOLK FESTIVAL COORDINATING COMMITTEE

Sousan Frankeberger  
Charlie Pilzer  
Dwain Winters

703-803-3272  
301-565-8818  
301-657-2789

### FSGW Board Meeting

**Tuesday, April 5 • 8 pm**

The monthly FSGW board meeting will be held in Classroom 201 at Glen Echo Park. All FSGW members may attend. If you wish the Board to consider a particular matter, please contact the appropriate board member or Anne Sergeant, FSGW President, at 301.270.4553 in advance of the meeting.

## Dances continued

### Wednesdays

**FSGW English Country Dance • Glen Echo, MD.** See the listing on page 4.

### Saturdays

**English Country Dance • Silver Spring, MD**  
**Saturday, April 9 • 8-10:45 pm**

At Sligo Middle School, 1401 Dennis Ave. Dance to music by **Peascods Gathering**, calling by **Barbara Harding** and **Bob Farrall**. Beginners and singles welcome. \$5. Info: Carl Minkus 301-493-6281, Karla Farrall 301-577-5018

**English Country Dance (CDSS) • Herndon, VA**  
**Saturday, April 16 • 8 pm**

At Harding Hall, 730 Jackson St, Herndon, VA. Caller **Barbara Harding** with recorded music. No experience or partner necessary. Free. Info: **Barbara** at 703-437-3615. E-mail: [bharding@quixnet.net](mailto:bharding@quixnet.net).

### INTERNATIONAL

### ALPINE/SWISS

### Sundays

**Alpine Dancers - New Carrollton, MD**  
**Sunday, April 10 & 24 • 4-6:30 pm**

Looking for energetic female (and male) dancers! Alpine Dancers hold free, open practice at the New Carrollton Municipal Center, 6016 Princess Garden Parkway, near Washington Beltway exit 20A. New dancers welcome. Graceful to lively couples and trio figure dances from Austria, Germany and Switzerland. Recorded music. Confirm dates, as practices may be replaced by performances. Info/directions: **Herbert & Carol Traxler**, 301-577-3503; **Regina Loffredo**, 301-464-9193, [www.alpinedancers.org](http://www.alpinedancers.org) email [caroltraxler@yahoo.com](mailto:caroltraxler@yahoo.com).

### Wednesdays

**Swiss Folklore Group • NW Washington, DC**  
**2nd and 4th Wednesdays • 7:30-9 pm**

Open dance at the Swiss Embassy, 2900 Cathedral Ave, NW. No partner needed, taped music, free. Info: 301-530-5643 or email: [franw@olg.com](mailto:franw@olg.com)



### CEILI/IRISH

**2nd Saturday Ceili • Fairfax, VA**  
**Dance 7:30pm, Workshop 7-7:30pm**

Comhaltas Ceoltoiri Eireann (CCE) sponsors this dance at Green Acres Center, 4401 Sideburn Road, Fairfax, VA (New location!) **The Bog Wanderers Ceili Band** plays. Free tea, coffee, sodabread. Softdrinks \$0.75 Admission: Members \$10, non-members \$12, 6-16 \$6; maximum family charge \$25. Info: **Teresa Farewell** 703-369-7132.

### INTERNATIONAL

### Mondays

**Bethesda International Folk Dancers • MD**  
**Mondays • 7:30-10 pm**

Dance on the fantastic wood floor of the Leland Community Center social hall, 4301 Willow Lane, Bethesda, Md. No partner necessary. All ages and levels of expertise welcome. Join a friendly group to learn dances from Bulgaria, Romania, Israel, Armenia, Russia, Hungary, Croatia, Scandinavian countries, and many other countries. Beginners teaching 7:30-8 pm. Intermediate/advanced teaching and request dancing 8-10 pm. Mostly recorded but occasionally live music and workshops. \$5. On certain holidays and sometimes when the Montgomery County Schools are closed, our class meets at our usual alternate location, the Women's Club of Bethesda, 5500 Sonoma Rd., at the corner of Old Georgetown Rd. (across from NIH.) When the class meets at the Women's Club, admission is \$6 and we meet from 8-10:45 pm. Bring refreshments to share. Watch for details on our annual Memorial Day International Folk Dance Weekend at Cherry Hill Park in College Park, Md.

For a recorded message call for Info: **Phyllis or Brandon Diamond**. 301-871-8788, e-mail [diamonddancecircle@comcast.net](mailto:diamonddancecircle@comcast.net) or visit our website: [www.diamonddancecircle.com](http://www.diamonddancecircle.com)

**Sacred Circle Dance • Bethesda, MD**  
**Mondays • 7:30-9 pm**

Sacred circle dance integrates body, mind, and spirit in a moving meditation. It will relax and rejuvenate; challenge and charm; lift your heart and feed your soul with new and ancient dances from many cultures, and recorded music from six continents. For beginning and experienced dancers alike; every dance is taught each time. \$10. Dance on the exquisite wooden floor in the sanctuary of the River Road Unitarian Church. The entrance to the church is on Whittier Blvd. near the intersection with River Rd. Info: **Tuppence Blackwell** at 703-379.2992 or [dance\\_with\\_tuppence@earthlink.net](mailto:dance_with_tuppence@earthlink.net).



## Dances continued

### Tuesdays

#### Circle Dance • Arlington, VA

**Tuesdays in April • 8-9:45 pm**

See listing for Circle Dance under Mondays. Recorded music. No partners necessary. All levels welcome/all dances are taught. Arlington Unitarian Universalist Church at the corner of Route 50 and George Mason Dr. \$10 per session or purchase a block of sessions at reduced cost. **Info: Judie David at 703-451-2595 or Vedavid@starpower.net.**

#### Arlington International Folk Dancing • VA

**Tuesdays • 8-10 pm**

Key Elementary School, off Veitch St. between Wilson and Key near the Courthouse Road Metro, Arlington, VA \$3. Recorded music. Instruction, walk-throughs, and requests. Singles welcome and all ages or levels of expertise. **Info: 703-527-8998 or sstulberg@earthlink.net**

### Wednesdays

#### Columbia International Folk Dancing • MD

**Wednesdays • 8-10:30 pm**

Kahler Hall, Beaverkill Rd. at Harper's Farm Rd., Columbia, MD. Admission \$3. Recorded music. Beginners welcome. Teaching until 9 pm. We have parties and workshops. **Info: 410-997-1613 (night), or 301-495-4642 (day).**

### Thursdays

#### The FSGW Cosponsored Glen Echo Folkdancers are listed on page XX.

#### Chevy Chase International Folk Dancers • Washington, DC

**Thursdays • 7:30-9:30 pm**

Chevy Chase Community Center, 5601 Connecticut Ave, NW, Washington DC (Connecticut Ave. at McKinley St., 2 blocks south of Chevy Chase Circle). Instruction and walk-throughs until 8:30. All levels welcome. No partner necessary. Recorded music. Leader **Roland Forbes**. **Info: Jackie Davis 301.424.8827 or Naomi Rogers 301-438-0063.**

#### Mount Vernon International Folk Dancing • Alexandria, VA

**Thursdays • 8-10 pm**

Mount Vernon Unitarian Church meeting hall, 1909 Windmill Lane, Alexandria, VA. Instruction, walk-throughs, requests. No experience or partner needed. Admission \$2.50. Recorded music. **Info: 703-780-2393 or kkkrogh@aol.com.**

### Fridays

#### Benefit Dance for Tinel Gheti • Greenbelt, MD

**Friday, April 1 • 8:15 - 10:45 pm**

Dance to some of the hottest music on the planet by **Lyuti Chushki** (Bulgarian), **Sarenica** (Tamburitza music from Serbia and Croatia) and **Ardeleana Ensemble** (from Transylvania), while doing a good deed! **Tinel Gheti**, a valued member of the international folk music and dance community since arriving here from Romania six years ago, is undergoing extensive treatment for cancer. He is uninsured. All proceeds from this dance will be applied to his astronomical medical expenses. For those who are unable to attend but would like to send a donation, checks may be made out to "Alexandru Gheti" and send to "Tinel Fund", c/o Jamie and Betsy Platt, 6105 Yale Ave., Glen Echo, MD 20812. At the Greenbelt Community Center Dance Studio, 15 Crescent Rd., Greenbelt, MD. **Requested donation \$20. Info: Larry Weiner 301-565-0539/weiner.larry@comcast.net John & Sheila Robinson 410-715-9210 John Bartholomew 301-565-3650. In case of inclement weather, call 301-474-5525 or 301-397-2208.**

#### Greenbelt International Folk Dancing • MD

**Fridays • 8:30-11 pm**

Focusing on dances from Eastern and Western Europe, Scandinavia, and the Mediterranean. No partner or experience necessary. Teaching from 8:30 - 9:15 pm, request dancing 9:15-11 pm. Mostly recorded music. Greenbelt Community Center Dance Studio (beautiful wooden floor!), 15 Crescent Rd., Greenbelt, MD. Admission \$5. **Info: Larry Weiner 301-565-0539 or weiner@erols.com; John Robinson 410-715-9210; and John Bartholomew 301-565-3650.**

### Saturdays

#### Circle Dance • Burke, VA

**Saturday, April 9 and 23 • 7:45-10:30 pm**

See listing for Circle Dance under Monday.

Accotink Unitarian Universalist Church, Lake Haven Dr. (off Burke Lake Rd. near the intersection of Fairfax County Parkway).

### ISRAELI

#### Israeli Dancing • Silver Spring, MD

**Tuesdays • 7:30-11 pm**

Shaare Tefila Congregation, 11120 Lockwood Drive, Silver Spring (near intersection of Route 29 and New Hampshire Ave.). 7:30-8:30, beginner/intermediate teaching and dancing. 8:30-11:00, advanced teaching, open dancing and requests. Admission \$6/\$5 members/\$4 students. **Info: Helen Rubin, 301-460-4214 or helen@israelidance.com.**

## Dances continued

### Israeli Dancing • Potomac, MD

**Wednesdays • 8:15-10 pm**

Har Shalom Congregation, 11510 Falls Rd., Potomac (between Democracy Blvd and Montrose Rd). "Oldies" only (dances before 1990). Instruction: 8:15-8:45; requests 8:45-10. Recorded music. \$5. **Info: Ben Hole, 301-441-8213.**

### Israeli Dancing • Greenbelt, MD

**Saturday, April 9 • 8:15 - 11pm**

Israeli "Oldies" party (dances before 1990). Recorded music, light refreshments. Greenbelt Community Center, 15 Crescent Road. \$5. **Info: Ben Hole, 301-441-8213.**

## MORRIS

### Bluemont Morris • Reston, VA

**Mondays • 7-8:30pm**

A group of men and women who do traditional Morris dances in the spring and fall. The group is fun and the dancing is addictive and great exercise. **Info: Laura 703-845-8536. <http://monticello.avenue.org/amm/>**

### Rock Creek Morris Women • Silver Spring, MD

**Wednesdays • 7:30 pm**

Visit exotic locales—Toronto, Brattleboro, the Biltmore Estate! Dance aerobically to live music! Strap bells to your legs! Join a strong community that dances, plays, sings, and drinks together. Practice held at Eastern Middle School, Silver Spring.

**Info: 703-845-0426 or [louiseneu@earthlink.net](mailto:louiseneu@earthlink.net) or [www.uswet.com/RCMW.html](http://www.uswet.com/RCMW.html)**

### Foggy Bottom Morris Men • Silver Spring, MD

**Thursdays • 8-10 pm**

Learn and perform traditional dances from English villages, long-sword, and seasonal mumming too. As long as you enjoy dance and movement you can experience the vigorous thrill of the Morris! We welcome new and slightly used dancers at practices and at the Quarry House afterwards. Highland View Elementary School, 9010 Providence Ave. **Info: Jud McIntire at 703-528-0588 or Bill Brown at 301-270-2014 or website, [www.fbmm-morris.org](http://www.fbmm-morris.org).**

## SCANDINAVIAN

### Norwegian Dancing House Party

• Middletown, MD

**Saturday, April 2 • 5:30 & 7 pm**

Welcome to a new Norwegian folkdance series, with classes/dances in various regional locations. (HEY,

CONTRA DANCERS: it's quite different from hambo, and it's on the way to Shepherdstown!) The unique Norwegian Hardanger fiddle has 4 or 5 sympathetic strings located underneath the bowed strings (see [www.hfaa.org](http://www.hfaa.org)), and the music is mesmerizing! Free admission, with jar out for our wonderful local fiddler, **Loretta Kelley**. Come at 5:30 for potluck and/or informal lessons; the dancing begins in earnest around 7. Please bring a dish/snack to share if possible. Dry, vegetarian house; cats in residence. Near I-270 & I-70. **Info and directions (easy but needed): Jenny Foster, [pi@xecu.net](mailto:pi@xecu.net), 301-371-4312.**

### Scandinavian Dance • Greenbelt, MD

**Saturday, April 16 • 7-10 pm**

Scandia DC sponsors this third Saturday dance featuring live fiddle music by **Andrea Hoag** and the **Scandia DC Spelmannslag** with some recorded music. No partners necessary. Teaching 7-8 pm: *Bakmes och Slängpolska från Övre Klarälvsdalen*, a lively, fun Swedish dance with both forward and backwards turns - it's one of our favorites.

Greenbelt Community Center Dance Studio (wood floor) 15 Crescent Rd. Greenbelt. \$7 **Info: 202-333-2826, [linda@scandiadc.org](mailto:linda@scandiadc.org), [www.scandiadc.org](http://www.scandiadc.org).**

## SCOTTISH

*Similar to English Country - No partner needed -  
Bring soft, flexible shoes - Taped and live music -  
For new and experienced dancers.*

### Scottish Country Dance • NW Washington, DC

**Mondays • 8-10 pm**

Satterlee Hall, St. Alban's Episcopal School, Washington, DC. **Info: John MacLeod, 301-622-5945 or [blackolav@cs.com](mailto:blackolav@cs.com) and Betty Lee Barnes, 202-966-3595 or [Thistledance@starpower.net](mailto:Thistledance@starpower.net).**

### Scottish Country Dance • Greenbelt, MD

**Tuesdays • 8-10 pm**

Greenbelt Community Center. **Info: Jennifer Mayrovitz: 410-922.6369 or [rjmayro@erols.com](mailto:rjmayro@erols.com)**

### Scottish Country Dance • Alexandria, VA

**Wednesdays • 7:30-9:30 pm**

Jefferson-Houston High School, 1501 Cameron St., Alexandria, VA. Be sure to confirm class date (school events may pre-empt). **Info: Mel or Ellie Briscoe at 703-461-7383 or [mail@briscoe.com](mailto:mail@briscoe.com).**



## Dances continued

### SQUARE

#### Taylor Made Squares • Silver Spring, MD

**Tuesdays • 8-9:30 pm**

**Betsy Taylor** calls squares to recorded music at the Long Branch Community Center, Piney Branch Rd., Silver Spring, MD. Wood floor. No experience or partner necessary. **Info: 301-589-4868.**

#### Hot Squares! • College Park, MD

**2nd Tuesday**

Hot Squares in the Old Towne Tonight! 2nd Tuesday square dance party. **Laura Brown, Ann Fallon, Eva Murray, Janine Smith** and **Susan Taylor** call hot squares to the sizzling music of **Leah Weiss** on fiddle and **Gary Wright** on guitar. Cherry Hill RV Park Conference Center, 9800 Cherry Hill Road, College Park, MD. All are invited to this party, which will take place monthly on 2nd Tuesdays. Mark your calendars for May 10. Hot Squares will take a summer break after the May 10 dance, and will resume in September. Watch this space!! Admission: \$8:00. Refreshments to share are welcome. **Info: 410-268-0231 or 301-762-2231 or squaredancers@comcast.net**

### SWING

#### WSDC Swing Dances • Glen Echo, MD

**9 pm-12 midnight**

In the Ballroom. Introductory swing dance lesson from 8-9PM, live music and dancing 9-midnight. \$15, or volunteer for an hour and get in free. Dress is casual; no partner necessary; and all ages are welcome. **301-340-9732; www.wsd.org; or volunteer by e-mailing wsdcvolunteer@hotmail.com**

#### April

- 2** **Girls from Mars and Almost Recess** -GEP-PAC Benefit Dance Bands' websites: <http://www.girlsfrommars.com> and <http://www.almostrecess.com/>
- 16** **Peter Davis and Lindy Hop Heaven** and our Instructor Showcase Special Website: <http://www.peterdavis.biz>

### WALTZ / BALLROOM / SOCIAL

#### Sunday Afternoon Waltz • Glen Echo, MD

**April 3 & 17 • 3-6 pm**

At 3 pm there is a half hour introductory waltz workshop, followed by social dancing until 6 pm. Admission \$7 includes lesson. In the Spanish Ballroom or the Bumper Car Pavilion at Glen Echo

Park. For info go to [www.dancedc.com](http://www.dancedc.com) or call Glen Echo Park at 301-634-2222.

#### April

- 3** **Rhapsody Dance Band**  
**17** **Blue Bamboo**

#### Ballroom Tea Dance • Glen Echo, MD

• Spanish Ballroom

**Sunday, April 10 • 3:30-6 pm**

*Flying Feet Enterprises* presents the music of the roaring 1920s and sophisticated 1930s by the **LaSalle Dance Orchestra!** Whether it's a sophisticated swing, a passionate tango, a romantic waltz, or one of the other exciting rhythms the band plays, you're guaranteed an afternoon of wonderful dancing! Beginning Dance lesson 3-3:30 pm (participants choose what dance they want the lesson to be), followed by dancing from 3:30-6 pm; \$8/person. **More information: <http://www.flyingfeet.org> or 301-299-8728.**

#### Milonga (Argentine Tango) • Glen Echo, MD

• Spanish Ballroom

**Sunday, April 10 • 8-11 pm**

*Flying Feet Enterprises* is proud to present a Milonga with instruction from **Karin Waeltio** and DJing by Washington's own **Joe Petrisko** in the Spanish Ballroom. Argentine Tango is a wonderful dance from Argentina and this is a chance to learn from one of the most popular instructors and DJs in the area. Beginning lesson 7-8 pm, followed by dancing from 8-11 pm; \$10/person. **More information: <http://www.flyingfeet.org> or 301-299-8728.**

#### "An Evening with Strauss" Waltz Ball

• Glen Echo, MD

**Saturday, April 30 • 8 pm**

This is our elegant, annual BENEFIT Viennese Ball featuring an evening of Viennese waltzes, tango, and polkas. Proceeds benefit Glen Echo Park. A dressy affair (black tie optional), this evening will provide beverages to the dancers, dance cards, and the Grand March. Carousel rides (75 cents) are also available. The evening begins at 8pm with a one-hour introductory Viennese lesson followed by three hours of social dancing. We usually sell-out so come early. Admission is \$15 per person. **For info: go to [www.dancedc.com](http://www.dancedc.com) or call Glen Echo Park at 301-634-2222.**



## Dance Classes

Flying Feet is offering the following dance classes. No partner/experience required. **More information:** <http://www.flyingfeet.org> or 301-299-8728.

### **Mondays, April 4-25 (4 weeks-\$45)**

• 7:30-8:30 pm

Glen Echo's Spanish Ballroom

What better place to learn and enjoy Latin dance than Glen Echo's Art Deco Spanish Ballroom! A little salsa, some cha cha, a sultry rumba - let the night sizzle! We will have you up and dancing at your very first class! Pre-registration appreciated but not required.

### **Beginning Lindy Hop**

**Mondays, April 4-25 (4 weeks-\$90)**

• 8:30-9:30 pm

Glen Echo's Spanish Ballroom

A wonderful introduction to Swing Dancing and Swing Music! This 8 week class starts with Jitterbug (6 count swing) and quickly moves to Lindy Hop (8 count swing). Learn swing outs and, Lindy circles, echo kicks, and tandem Charleston, as well as a show-stopper or two! Pre-registration appreciated but not required.

### **Beginning Swing and Fox trot**

**Thursdays, April 7 - 28 (4 weeks-\$36)**

• 8-9 pm

Northwest Sport N Health 4001 Brandywine St. NW (just 1 block from red line Teneley Metro station)

A wonderful introduction to swing and foxtrot! The music and people are so much fun you will be up and dancing at your very first class! We will focus on helping you become a great leader or follower. Pre-registration appreciated but not required, walks-ins welcome.

### **Beginning Scandinavian Dance Class**

• Bethesda, MD

**Tuesdays, April 12 and 26 • 8 - 9:30 pm**

Learn hambo, schottish, waltz, zwiefacher, and other couple turning dances. Some hambo is done every time. Singles, couples, beginners, and advanced dancers welcome. Recorded music. Wear smooth-soled shoes for turning, not running shoe. Cost \$5.

**Info: Lisa Brooks at 240-731-1935, 301-435-5544, [lisa@HamboDC.org](mailto:lisa@HamboDC.org), or [www.HamboDC.org](http://www.HamboDC.org).**

**See a map on website or flyer.**

**Directions:** Enter NIH at Wisconsin Av. and South Dr. for vehicle inspection (have ID ready). Go to the south center of NIH and park in NIH permit parking next to dancing in Building T-39. Or walk 8 minutes from the Medical Center metro stop.

## Jams/Open Mics/Audience Participation

*Listed by day of the week*

### **Sundays**

#### **Scottish Traditional Music Jam • Wheaton, MD**

**1st Sundays • 3-6 pm**

Scottish traditional music jam, first Sundays, Royal Mile Pub, 2407 Price Avenue. Musicians welcome. **Info: John Ward at 301-277-6220 or [fidhle@iamdigex.net](mailto:fidhle@iamdigex.net)**

#### **Monthly Young People's Irish Session • Vienna, VA**

**2nd Sundays • 1 - 3:30 pm**

**Betsy O'Malley** hosts and leads a young people's Irish Music Session at her home in Vienna VA. The earlier part of the session, 1- 2, is devoted to younger and 'greener' musicians. The later time, from 2 - 3:30 is for older and more experienced players. Ages have ranged from 8 up to 18. If you're interested or have questions, **contact Betsy O'Malley at 703-560-4719 or [betsy.omalley@verizon.net](mailto:betsy.omalley@verizon.net)**



#### **CABOMA Jam • Arlington, VA**

**2nd and 4th Sundays • 2 pm**

Capitol Area Bluegrass and Old-Time Music Association (CABOMA) holds jams the 2nd and 4th Sundays of each month. Lyon Park Community Center, corner of N. Filmore and Pershing, Arlington, VA. **Info: Dave at 301-274-3441.**

#### **Dupont Music Circle • Alexandria, VA**

**Sunday, April 17 • 3 pm**

Since 1983 the informal Dupont Music Circle has met to sing and play English, Scottish, Welsh, Irish, Quebecois, American, and other traditional music just for fun. New location, new day (third Sunday), new time. **Info/confirmation: Liz at 703-658-0957.**

#### **Acoustic Open Jam • Reston, VA**

**Sunday, May 15 • 7-9 pm**

Love to play with other folks, but don't really have enough other folks to play with? Don't have a venue at which to play? Come to the Open Jam and join with other like-minded people. There will be a couple of professional session musicians to help keep things moving along, but the evening is largely up to you.

## Jams/Open Mics/Audience Participation *continued*

This is your chance to join in the playing! What genre of music? Depends on who shows up. Gather anyone you know who loves to play and come to the Jam. Or come by yourself—you'll meet new folks with whom to play. Don't play an instrument? Come join us anyway. See you there! At Community Center at Lake Anne. Free admission, free parking. Light refreshments will be served. **Directions: 703-689-3550.**

### **Mondays**

#### **Jammin' Java • Vienna, VA**

**Mondays • 7:30-10:30 pm**

Two songs or 8 minutes total. Free, open to all. 231 Maple Avenue East. Sign up at 7; show starts at 7:30.

**To sign up, contact: Kris Ohleth krisohleth@yahoo.com.**

#### **Monthly Children's Irish Music Jam Session • Accokeek, MD**

**2nd Mondays • 6:30 - 8 pm**

Come out to National Colonial Farm and join the fun! We will meet at the Farm's Staff Office until the new Education Center is open. Look for signs. National Colonial Farm is located at 3400 Bryan Point Road in Accokeek, MD. **For more information: 301-283-0167 or p.addamiano-carts@att.net.**

### **Tuesdays**

#### **Sea Chantey Open Pub Sing • Wheaton, MD**

**1st Tuesdays • 8 pm**

**The Ship's Company** chanteymen host an open mike sea chantey on the 1st Tuesday of each month at 8 pm, Royal Mile Pub, 2407 Price Avenue, Wheaton, MD. No cover/minimum; arrive early for a table. Participation encouraged but not mandatory. Requests are honored if possible. Mostly a cappella but instruments are welcome. **Info: Myron Peterson at ructic@yahoo.com /www.shipscompany.org**

#### **Folk Club of Herndon-Reston • Herndon, VA**

**Tuesdays • 7:30-9:45 pm**

Tortilla Factory, 648 Elden Street, Herndon, VA. Open mic format. Each performer gets 12 minutes (including setup time). \$1 donation. 2nd Tuesday includes a 25-minute member showcase. Smoke-free environment. **Info: 703-435.2402.**

#### **Change Ringing with Handbells**

**Tuesday, April 5 • 7:30pm**

What's change ringing? The English folk tradition of using tower bells to ring beautiful mathematical patterns (not melodies). It's surprisingly pleasing to the ear. Handbells are used for home/pub practice, and for the fun challenge of keeping track of where two bells go in the pattern. Caution: addictive! At Jenny Foster's

house near Frederick, MD. **Phone: 301-371-4312**  
**Email: pi@xecu.net.**

### **Wednesdays**

#### **Laurel Jam Session • Laurel, MD**

**2nd and 4th Wednesdays • 7-10 pm**

Adults who enjoy acoustic music are invited to come and sing, play, or listen to folk, bluegrass, and other traditional music in an informal setting. Phelps Senior Center, 701 Montgomery Street. **Info: 301-776-6168** during business hours.

#### **Semimonthly Fiddlers Group • Arlington, VA**

3rd Wednesdays (see Friday listing)

#### **Open Mic Nite • Alexandria, VA**

**3rd Wednesdays • 7 pm**

St. Elmos Coffee Pub, 2300 Mt. Vernon Avenue. 3rd Wednesdays, hosted by **Michelle Swan**. Two songs each. All are welcome. Signup starts at 7. **Info: 703-739-9268 or mswan64@yahoo.com.**

#### **Sea Chantey Open Pub Sing • Baltimore, MD**

**2nd Wednesdays • 8 pm**

**The Ship's Company** chanteymen host an open mike sea chantey at Wharf Rat, 801 S. Anne Street, Baltimore (Fells Point). Participation encouraged but not mandatory. Requests are honored if possible. **Info: Myron Peterson at ructic@yahoo.com /www.shipscompany.org**

### **Thursdays**

#### **American Balalaika Symphony, Open Rehearsals • Arlington, VA**

**Thursdays • 8 pm**

Fiddle, mandolin, and guitar experience translates easily to the balalaika and domra. Enthusiastic beginners welcome! Come play Russian and East European folk and classical music. Most Thursdays at The Church of the Covenant, 2666 Military Road, Arlington. **Info: John at JohnK@balalaika.biz or 703-837-9083.**

#### **Irish Traditional Music Session • Frederick, MD**

**Thursdays • 7 pm**

At Boe's Strings, 26 S. Market Street. **Info and tune list at www.BoesStrings.com or Boe at 301-662-0750.**

#### **Sea Chantey Open Pub Sing • Annapolis, MD**

**3rd Thursdays • 8 pm**

**The Ship's Company** chanteymen host an open mike sea chantey at The Drummer's Lot (Maryland Inn), Main Street, Annapolis. Participation encouraged but not mandatory. Requests are honored if possible.



## Jams/Open Mics/Audience Participation *continued*

Info: Myron Peterson at [ructic@yahoo.com](mailto:ructic@yahoo.com)  
[www.shipscompany.org](http://www.shipscompany.org)

### Fridays

#### Open Mic • Olney, MD

**1st and 3rd Fridays • 7-10 pm**

Songwriters' Association of Washington (SAW) will be hosting an open mic at Caribou Coffee (Olney Village Mart Center, 18101 Olney Village Mart Drive, Olney, MD 20832, (301-570-0909) every first and third Friday of the month, 7-10 pm. Sign-ups begin at 6:30 pm. **For more information about the open mic at Caribou Coffee, or SAW, contact SAW, 301-654-8434, [www.saw.org](http://www.saw.org), or Caribou Coffee, 301-570-0909, [www.cariboucoffee.com](http://www.cariboucoffee.com).**

#### Semimonthly Fiddlers Group • Arlington, VA

**1st Friday and 3rd Wednesday • 7-10:30 pm**

Intermediate and advanced players. All instruments welcome. We play old-time, Scandinavian, blues, swing/jazz, Cajun, and other styles at 1909 N. Ohio St., Arlington, VA 22205. **Lilli Vincenz, 703-532-2731; [FiddlerLilli@zzapp.org](mailto:FiddlerLilli@zzapp.org).**

#### Glen Echo Open Band • Glen Echo, MD

**April 8 • 8:30-11:30 pm**

The fabulous Glen Echo Open Band plays for the second Friday contra dance. All instruments and levels of ability are welcome. **Info: [fnd.folkdancer.com](http://fnd.folkdancer.com).**

#### Drumming Circle • Berkeley Springs, WV

**2nd & 4th Fridays • 8-10 pm**

Community drum circle meets at Coolfont Resort, Berkeley Springs, WV. Free. All are welcome - drummers, dancers, newcomers, beginners, children, families! Bring drums and other rhythm instruments or use those provided. Experienced drummers are welcome however, no prior experience is necessary to enjoy this open circle. Call ahead to confirm in case of severe weather or if you are traveling from a long distance. 1-800-888-8768 or 304-258-4500. **For further information about the drum circle or local drumming or belly dance classes, contact Bob at 304-258-4546, [RobertMarggraf@aol.com](mailto:RobertMarggraf@aol.com).** Coolfont Resort information is available at <http://www.coolfont.com/>.

### Saturdays

#### Archie Edwards Blues Jam • Washington, DC

**Saturdays • 1 pm**

The Archie Edwards Blues Heritage Foundation holds an acoustic blues jam almost every Saturday afternoon, starting about 1 pm. All skill levels welcome. 2007 Bunkerhill Road, NE, Washington, DC. **Info/confirmation: 202-526-7539.**

#### Hammer Dulcimer Jam • McLean, VA

**Saturday, April 23 • 1:30 - 4:30 pm**

Hammer dulcimer players meet bimonthly at the Dolley Madison Library to swap tunes and play together. Other acoustic instruments welcome. **Info: Heli at 703-689-3477, [heliel@earthlink.net](mailto:heliel@earthlink.net), or <http://pages.prodigy.net/holsopple>**

## Storytelling

#### Speakeasy-Washington Storyteller's Theatre • Washington, DC

**2nd Tuesdays • 8 pm**

All Speakeasys take place at HR-57, 1610 14th Street NW, Washington, DC at 8pm. Doors open 7:30. Admission \$5. HR-57 sells beer, wine and some food. Sign up for the open mic when you arrive. Open mic stories are strictly limited to 7 minutes and must incorporate the theme.

**Info: [www.washingtonstorytellers.org](http://www.washingtonstorytellers.org)**

#### Telling Tales 1 & 2

There's still time to register for **Jon Spelman's** introductory and intermediate storytelling courses. Starts in April. **Info: [www.washingtonstorytellers.org](http://www.washingtonstorytellers.org).**

#### Storytelling at the Nat'l Museum of the American Indian • DC

**Thursday, April 21 and Friday, April 22 • 12n**

**Saturday, April 23 • 11 am and 1 pm**

Storyteller **Lloyd Arneach** (Eastern Band Cherokee) draws from the storytelling traditions of his birthplace, the Qualla Boundary in western North Carolina. He has performed at the National Storytelling Festival, the Smithsonian Folklife Festival, and the First Americans Festival that opened the National Museum of the American Indian last September. **FREE, no tickets or reservations required. For further information call 202-633-1000 or visit [www.americanindian.si.edu](http://www.americanindian.si.edu).** Elmer and Mary Louise Rasmuson Theater, 1st floor, NMAI, 3rd St. and Independence Ave. SW.

# Workshops, Weekends, Festivals, & Special Events

## Adult Music & Instrument Making Workshops

• Front Royal, VA

**At the Northern VA 4-H Educational Center.**

540-635-7171 or fax 540-635-6876  
[www.ext.vt.edu/resources/4h/northern](http://www.ext.vt.edu/resources/4h/northern);  
[lajohns4@vt.edu](mailto:lajohns4@vt.edu)

### April

- 3-6 • Octave Mandolin Making with **Don Kawalek**  
 • Beginner's Bluegrass/Old-Time Mandocruian  
 Boot Camp w/ **Niles Hokkanen**

### May

- 8-11 • Standard Mandolin Making w/ **Don Kawalek**  
 • Rhythm Mandolin Boot Camp w/  
**Niles Hokkanen**

## Hambo Workshop and Dance with Jamie & Betsy Platt • Glen Echo, MD

**Saturday, April 9 • 10 am-2:30 pm**

Learn to do this popular Swedish turning dance, or brush up your hambo skills at the intimate Glen Echo Town Hall with live music by **Andrea Hoag**. Jamie and Betsy have been teaching hambo at dance festivals, dance weekends, and workshops for the past 15 years. **Andrea** regularly performs for Scandinavian (and contra) dances throughout the U.S. and is also a popular fiddle teacher. The 10 am-12 noon workshop is limited to 15 men and 15 women. Advanced registration necessary. After the potluck lunch, there will be review and open hambo dancing from 1-2:30 pm. All are welcome, space permitting. Cost \$15 per person for the whole shebang, or \$5 for the open hambo session. For more information, 301-320-7099, [dancingplanet@erols.com](mailto:dancingplanet@erols.com), or [www.dancingplanetproductions.com](http://www.dancingplanetproductions.com).

## 31st Alaska Folk Festival • Juneau, AK

**April 11-17**

web page: [www.juneau.com/aff](http://www.juneau.com/aff)

## GWCC Spring Fling Weekend Away • Shepherdsdown, WV

**April 15- 17**

The GWCC is proud to sponsor a Spring Fling Weekend Away in Shepherdstown, WV. We will be staying at the award winning Clarion Hotel. Two Irish Set Dancing workshops are planned on a great wood floor at the War Memorial building as well as ceilis on Friday and Saturday evenings. Please call **Joan O'Connor** at 301-977-0983 or e-mail [Joaneejet@hotmail.com](mailto:Joaneejet@hotmail.com) for more information.



## Robin Kessinger Guitar Workshops • Mingo, WV

**April 22-24**

At the BrazenHead Inn, six miles from Snowshoe Mountain Resort. The cost will be \$150 for all three days, which does not include lodging, but a special discount on lodging will be extended to all who attend this workshop.

For more information about the workshop, contact **Robin Kessinger** at [robinkess@newwave.net](mailto:robinkess@newwave.net). For information about lodging availability, contact the BrazenHead Inn at 866-339-6917 or <http://www.brazen-headinn.com/directions.htm>

## Fourth Annual Susquehanna Music & Arts Festival • Darlington, MD

**May 6-8**

This is an annual three-day event that highlights a diverse array of traditional and modern folk music artists from around the country. Volunteers, vendors and sponsors needed. Location Ramblewood Resort and Campground outside Havre de Grace.

<http://www.smaf.info>

## 2005 Victoria's Revenge Dancefest • Cape May, NJ

**May 13-14**

A weekend of mostly contras and waltzing. Music by **Notorious** (Larry Unger, Eden MacAdam-Somer, & Ralph Gordon) & **The Gigmesters** (Dave Wiesler, Ralph Gordon, Alexander Mitchell, & Paul Oorts). Featuring calling by **Robert Cromartie & Gaye Fifer**. Friday Night Dance – contras and waltzing. Saturday workshops, picnic lunch & concert, enjoying the Boardwalk and sights of Cape May. Saturday Night Ball starting with a Grand March – an elegant evening dance! Flyers at local dances & on our web site [www.contradancers.com](http://www.contradancers.com). For additional info, call 301.320.7099

## Maryland Faerie Festival, • Upper Marlboro, MD

**Saturday, May 21 • 10 am-6 pm**

The Maryland Faerie Festival, a celebration of Faerie folklore and literature, will be held Saturday, May 21st at the Patuxent 4H Center, 18405 Queen Anne Road in Upper Marlboro. Traditional, modern and faerie-themed folk music will be performed by **Clam Chowder**, **Steve Haug**, **Rocky Jones**, **Gary Ehrlich** and others. **Thrir Venstri Foetr** will also perform and teach English Country dances. Admission is \$7 adults and kids under 12, \$3 kids 3-11, kids under 3 are free. \$1 off for dressing in costume. Please visit the festival's website at [www.marylandfaeriefestival.org](http://www.marylandfaeriefestival.org).

## Workshops, Weekends, Festivals, & Special Events *continued*

### Coatesville Celebration of Old-Time Music and Dance • Coatesville, PA

**Saturday, May 21 • 12n - 9 pm**

The event will be a BIG PARTY bringing together players and fans to honor the traditions of old-time music and dance. The entire event is free and open to the public. Performances of string band and a cappella gospel music will be given in the center's Back Room Theater and an evening square dance will be held in the large hall. Small-group jam sessions, socializing and great food are the primary goals of this fun-filled day of music and fellowship. The Coatesville Cultural Society is located at 143 E. Lincoln Highway in the heart of the downtown area. **For more information, call 610-347-1790.**

### Diamond Dance Circle Memorial Day International Folk Dance Weekend

**May 27-30 • College Park, MD**

At Cherry Hill Park, 9800 Cherry Hill Road. Cherry Hill Park has a fantastic wood floor. Join the Diamond Dance Circle for our 36th Weekend of dance, fun, and fantastic teaching by internationally renowned dance masters. This year's staff features **Zeljko Jergan** teaching Croatia dances. This fabulous dance master teaches and choreographs Croatian dances for many ensembles and has taught at workshops and festivals all over the U.S. and the world. Zeljko will be accompanied by the wonderful **Otrov Tambura Ensemble**. They will play for his teaching, the evening parties, and will have a short concert one evening. **Lee Otterholt** will teach ethnic minority dances from Eastern Europe (Vlach, Gypsy (Rom), Shiptar (Albanians living in former Yugoslavia) and other minority ethnic groups from several different countries. **Cristian Florescu** and **Sonia Dion** will teach Romanian couple, circle, men's and women's dances. **Laurie Anderson** will teach a special one hour Salsa-Merengue workshop at 7 pm on Saturday. Workshops Saturday and Sunday morning and afternoon with reviews on Monday. Continental breakfasts each morning, lunch on Sunday and parties each evening with ethnic snacks. Full weekend, or Saturday or Sunday only registration. Watch for flyers at local dances for info on costs and additional info at local dances or call **Phyllis** or **Brandon Diamond**, 301-871-8788, e-mail [diamonddancecircle@comcast.net](mailto:diamonddancecircle@comcast.net) or see our web site at [www.diamonddancecircle.com](http://www.diamonddancecircle.com)

### Almost Heaven 2005 • WV

**May 27-30**

Come join us Memorial Day weekend at Buffalo Gap Camp in beautiful West Virginia for a weekend of contra, swing, waltz, tango and more. Music for contras and couples dances will be provided by **Swallowtail**

and **Avant Gardners**, and swing music will be by **SwingSet**. Callers will be **George Marshall**, **Tim Van Egmond** and **Beth Molaro**. There will be workshops in swing, tango and more by **Ellen Engle** and **Marc Shepanek**, and waltz workshops with **Gaye Fifer** and **Wayne Albright**. Musicians will have a chance to play with **Swallowtail**. Families are welcome.

To register or for more information, see our website at [www.contradancers.com](http://www.contradancers.com) or contact **Joyce Duffy-Bilanow** at 301-596-0487 or [heaven-joyce@comcast.net](mailto:heaven-joyce@comcast.net).

### Folk College with *Simple Gifts* • Huntingdon, PA

**May 27-30**

At Juniata College (new location). Shorter drive from DC area! Folk College is a fun and educational weekend for folk musicians of all levels and instruments, plus there are events for non-musicians too. The focus of the event will be group playing with an emphasis on arranging and performing folk music. New this year is an optional extra day *Folk Intensive with Simple Gifts* on Monday, May 30. Cost of the weekend is \$135 if postmarked by April 25 and \$150 afterwards. Housing and meals extra. Folk College is sponsored by the Huntingdon County Arts Council. **Ilona Ballreich**, Executive Director; [hcac@adelphia.net](mailto:hcac@adelphia.net) 814-643-6220. Info at <http://www.simplegiftsmusic.com/folk-college> website

### Nordic Fiddles & Feet Camp • Buffalo Gap Camp in WV

**July 2-9 (or weekend-only)**

Immerse yourself in the enchanting folk music/dance of Norway and Sweden. This welcoming community that springs to life each summer offers classes at all levels with excellent teachers, fabulous food featuring Scandinavian delicacies, and nightly dance parties filled with magic. Learning to dance the hambo and/or discovering a lovely fiddle tune to play are just the beginning—join us and experience so much more! Discounts for first-timers and families.

Info: [www.nordicfiddlesandfeet.org](http://www.nordicfiddlesandfeet.org), [fiddle-sandfeet@aol.com](mailto:fiddle-sandfeet@aol.com), 865-522-0515.

### Greenwood Furnace Folk Gathering • Huntingdon County, PA

**July 8-10**

This new event, presented by *Simple Gifts* and the Huntingdon County Arts Council, welcomes musicians of all instruments and levels to a weekend of workshops, jamming, open stage, concerts, and a contradance. Held at Greenwood Furnace State Park in central Huntingdon County, PA, a gorgeous location

## Workshops, Weekends, Festivals, & Special Events *continued*

with hiking trails, camping, sandy beach, and lake swimming. **For details call 814- 643-6220.**

### SoundCatcher Summer Workshop: Play by Ear • Harper's Ferry, WV

**August 14-20**

**DON'T BE PAPER TRAINED!** Would you like to improvise and ornament spontaneously, as you play? Want to learn tunes from all over the world, including medieval, renaissance, Sephardic, Breton, Irish and Old-Time repertoire? Feel like you can't pick up tunes by ear fast enough at sessions? Come and work with **Scott Reiss** (recorder, hammered dulcimer, Irish whis-

tle), **Tina Chancey** (fiddle, viol, vielle, rebec) and **Bruce Hutton** (guitar, banjo, mandolin, lap dulcimer) of **Hesperus**. Tune arranging, group playing, beginning lap dulcimer and whistle. Friendly and supportive atmosphere. Playing by ear is a skill you can learn! Any portable instrument welcome, students ages from 13-93+. \$800 for the week, including all meals and double room at Hilltop House, overlooking the confluence of the Shenandoah and Potomac Rivers and historic Harpers Ferry.

**Info & application (some partial scholarships available):** **Scott Reiss** 703-525-7550 or **ScottReiss@cs.com**

## FSGW Newsletter Editorial Policy

The Folklore Society of Greater Washington endeavors to print copy it deems relevant to its membership and purpose as stated in its by-laws;

*"The main purpose of the Society is to further the understanding, investigation, appreciation, and performance of the traditional folk music and folklore of the American people."*

- All copy (except classified ads) must be submitted by e-mail to [newsletter@fsgw.org](mailto:newsletter@fsgw.org) in text format in the body of the e-mail by the 10th of the preceding month.
- Please review comparable entries from the Newsletter and edit accordingly.
- The Editor reserves the right to edit or omit copy as necessary.

**Editor: Lesley Frank • [newsletter@fsgw.org](mailto:newsletter@fsgw.org) • 301-595-8806**

**Design & Layout: Jennifer Woods GRAPHICS • Silver Spring, MD • 301-587-7174**

## C L A S S I F I E D S

Editorial Policy for Classified Ads: Only FSGW members may place an ad. Ads may be up to 50 words, including telephone number with area code. There is a limit of two ads per member per issue. Ads **MUST** be relevant to FSGW's stated purpose (see Editorial Policy). Charges: Commercial business: \$8 for 10 words; Non-commercial and individual \$4 for 10 words; 25% discount for any single ad placed in 11 consecutive issues (one year) and paid in advance. LOST & FOUND ads are FREE. Ad copy with check made payable to FSGW must be received by the newsletter deadline. Mail to the Editor: **Lesley Frank; 11302 Odell Farms Court, Beltsville, MD 20705-4106.**

**CD MANUFACTURING BY OASIS®.** Honest pricing, personal service. Free radio promotion nationwide on OasisAcoustic™ sample CDs. **888-BY-OASIS, [www.oasisCD.com](http://www.oasisCD.com), or [info@oasisCD.com](mailto:info@oasisCD.com).**

**LIVE SOUND REINFORCEMENT.** Concert, dances, conferences, weddings, mitzvahs. Small to large systems, with or without sound engineer from sound check to encore. Folk, ethnic, blues, acoustics, our specialties. **Contact David Eisner at House of Musical Traditions 301-270-9090.** Gobs of experience, references on request.

**LOSE YOUR VOICE?** Find it, understand your instrument, use it in good health for life! **Contact Barbara Ryan 703-426-1450; [ionavoice@pobox.com](mailto:ionavoice@pobox.com).**

**VIOLIN LESSONS FOR BEGINNERS OF ALL AGES.** Patient, encouraging teacher of folk and classical music. Sight reading, ear training, music fundamentals, violin techniques, artistry and fun. **301-816-4976 or [paulinelemerphd@teacher.com](mailto:paulinelemerphd@teacher.com).**

**CD Booklets, labels, J-Cards Design** — Also books, magazines, brochures Designing YOUR ideas! — **Jennifer Woods GRAPHICS 301-587-7174.**

**GUITAR, BANJO, MANDOLIN LESSONS** in Cheverly, MD with Orrin Star. All folk & bluegrass styles. **301-773-6149. [orrin-star.com](http://orrin-star.com).**

**DANCE SHOES AND APPAREL** — Many shoe styles designed for comfort and easy dance movements. Dance tops, pants, skirts etc. 10% off for FSGW members. **Les Gals Discount Warehouse. 301-608-3237. [www.LesGalsActivewear.com](http://www.LesGalsActivewear.com).**

**TAYLOR 714CE FINGERSTYLE GUITAR** — custom made cutaway extra-wideneck, abalone, Sitka spruce, rosewood, new last August, well mellowed & loud, mint condition \$2200 (paid \$2500) **Dave 703-525-9692/703-969-1069**

# WASHINGTON FOLK FESTIVAL NEEDS VOLUNTEERS

The 2005 Washington Folk Festival will take place on Saturday, June 5th, from noon to 11:30 PM, and Sunday, June 6th, from noon to 6 PM, at Glen Echo Park in Glen Echo, Maryland. Admittance to the festival is free every year because of VOLUNTEERS! That's right: performers, emcees, stage crews, sound engineers, operations, food servers, and office staff all donate their time and their talents. As always, this year's festival needs you. Volunteering takes only a few hours of your time. Work is usually scheduled in two-hour blocks, but you can work as many blocks as you'd like. Tell us about some of your talents and interests and we will find a place for you to contribute to the Washington Folk Festival's ongoing success. To volunteer send us an email to: [wffvolunteer@cox.net](mailto:wffvolunteer@cox.net) or mail this to: P.O. Box 3763, Merrifield, VA 22116

**JOB PREFERENCES:** We need help with stage crews, information booths, parking, food service, T-shirts sales, trash patrols, theater ushers, volunteer and performer check-in, chronicling live performances, and facilitating last minute changes. (circle one)

## CONTACT INFORMATION:

Name: \_\_\_\_\_ Phone: \_\_\_\_\_

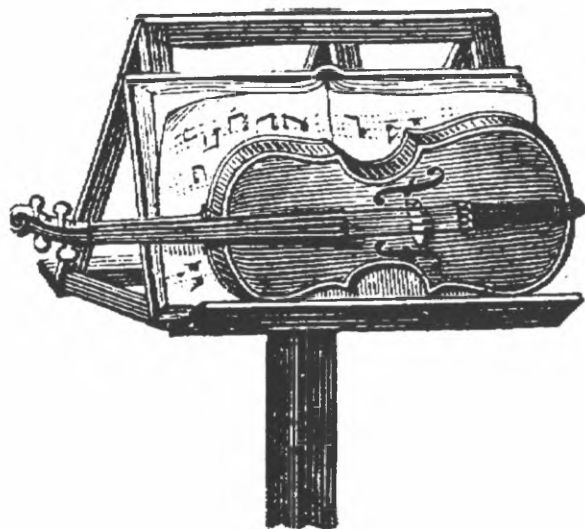
Address: \_\_\_\_\_

E-mail: \_\_\_\_\_ Interest: \_\_\_\_\_

## 25TH ANNIVERSARY



**JUNE 4 - 5, 2005  
GLEN ECHO PARK  
[WWW.FSGW.ORG](http://WWW.FSGW.ORG)**



## 25<sup>th</sup> Anniversary WASHINGTON FOLK FESTIVAL

Saturday, June 4, Noon-10 p.m.

Sunday, June 5, Noon-6 p.m.

**Rain or Shine • Admission is FREE!!**

The 25<sup>th</sup> Washington Folk Festival will be held at historic Glen Echo Park, 7300 MacArthur Blvd. in Glen Echo, Maryland, six miles northwest of Georgetown along the scenic Potomac River.

The Washington Folk Festival has been a gift of music, dance, storytelling, and crafts from artists living throughout the Washington, DC area for 25 years. This year's 25<sup>th</sup> Anniversary celebration commemorates the heritage of the past and welcomes the new, presenting a rich assortment of ethnicities from the DC area's wellspring of music, song and dance of diverse cultures and countries from around the world. A rainbow of traditional American music styles are also featured. The Washington Folk Festival presents continuous performances and workshops for every interest and every age, on seven stages over two full days.



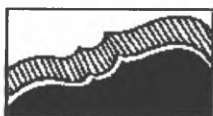
Off-site parking and shuttle service will be available from the GEICO parking lot, 5260 Western Ave, Chevy Chase, MD, only 3.3 miles from Glen Echo Park. The GEICO lot is only one block from the Friendship Heights Metro station at Wisconsin and Western Avenues.

The Washington Folk Festival is an all-volunteer event. All performers, staff, and support personnel donate their time, talent, and services.

Become a Washington Folk Festival Volunteer send us an email to [wffvolunteer@cox.net](mailto:wffvolunteer@cox.net)

**For more information: [wff@fsgw.org](mailto:wff@fsgw.org) • [www.fsgw.org](http://www.fsgw.org)**

The Folklife Society of Greater Washington, in cooperation with the National Park Service, the Glen Echo Park Partnership for Arts and Culture, and Montgomery County, MD, provides sponsorship for the 25<sup>th</sup> Anniversary Washington Folk Festival at Glen Echo Park, in Glen Echo, MD.



The  
**Folklore Society  
of Greater Washington**

6009 84th Ave. ❖ New Carrollton, MD 20784  
[www.fsgw.org](http://www.fsgw.org)

PRESORTED  
FIRST CLASS MAIL  
US POSTAGE PAID  
ROCKVILLE, MD  
PERMIT #4297

Printed on recycled paper.

**Address Service Requested.**



**FIRST CLASS**



\*\*\*\*\*3-DIGIT 207

4670

Sondra Stigen Wallace 2100/01  
603 Largo Rd  
Upper Marlboro MD 20774-2115

The Folklore Society of Greater Washington is a not-for-profit [Section 501(C)(3) of the IRS code] institution and we encourage the financial contributions of our members. Contributions in excess of annual dues are welcome and may be tax deductible. Please mail your gift to FSGW, 6009 84th Ave., New Carrollton, MD 20784. Subscriptions to the Newsletter only are available outside the Greater Washington Metro area.

FSGW IS DEDICATED TO PRESERVING AND  
PROMOTING TRADITIONAL FOLK ARTS IN THE  
WASHINGTON, DC METROPOLITAN AREA.  
MEMBERSHIP IS OPEN TO ALL WHO SUPPORT THESE  
GOALS UPON PAYMENT OF ANNUAL DUES.

**NOTE: NEW RATES!**

## FSGW Membership Form

☐ Renewal ☐ New Address ☐ New Membership\*

	<u>Individual</u>	<u>Family</u>
1 year	<input type="checkbox"/> \$31	<input type="checkbox"/> \$43
2 years	<input type="checkbox"/> \$57	<input type="checkbox"/> \$82
3 years	<input type="checkbox"/> \$84	<input type="checkbox"/> \$122
LIFE	<input type="checkbox"/> \$500	<input type="checkbox"/> \$750
Student	<input type="checkbox"/> \$22	

☐ **Newsletter Subscription ONLY \$22**

Available **ONLY** to those living **OUTSIDE** the Greater Washington metro area. Newsletter Subscription **ONLY** carries **NO** membership privileges.

\* If you are a new member, where did you get this newsletter?

- ☐ at Glen Echo Park (which event? \_\_\_\_\_)  
☐ Another FSGW event (which one? \_\_\_\_\_)  
☐ From a friend who is a member ☐ At my public library  
☐ Other \_\_\_\_\_

☐ I would like to help FSGW. Comments/Suggestions: \_\_\_\_\_

Name(s) \_\_\_\_\_

Address \_\_\_\_\_

City \_\_\_\_\_ State \_\_\_\_\_ Zip \_\_\_\_\_

Phone(s) \_\_\_\_\_

H: (\_\_\_\_) \_\_\_\_\_ W: (\_\_\_\_) \_\_\_\_\_

E-mail: \_\_\_\_\_

May we list you in our Membership Directory?  
(FSGW does not provide mailing lists to any other organizations.)

☐ Yes ☐ No

☐ Yes, but please do not list my:

☐ address ☐ home phone number ☐ work phone ☐ e-mail



Send form and check made payable to FSGW to:  
**FSGW Membership** ❖ 6009 84th Ave. New Carrollton, MD 20784

FSGW 2/05