

ISSN 0015-5950

# The Folklore Society of Greater Washington • Newsletter

Volume 44, Number 2

www.fsgw.org • Hotline: 202-546-2228

October 2007

## FSGW Special Event

Alexandria, VA



## IONA

Cream of the Celtic Crop

Saturday

October 27 • 8 pm

FSGW is proud to present **IONA** in concert at The Lyceum, 201 S. Washington St., Alexandria. Winner of a 2006 Washington Area Music Award, **IONA** will treat you to Scottish fiddling, driving percussion, and strong vocals. **IONA** celebrates the music and dance of Scotland, Ireland, Wales, Cornwall, the Isle of Man, Brittany, Galicia, and that other Celtic country, America – which is both the repository of these cultural influences, and the progenitor of its own. Clog along, sing along, or just tap your feet to the music.

Continued on the bottom of page 5

## FSGW Co-Sponsored Event

Silver Spring, MD

## Yuri Yunakov & His Romani Wedding Band

Thursday, October 4 • 7:30 pm

FSGW, in cooperation with World Music Folklife Center, presents critically acclaimed saxophonist **Yuri Yunakov**, with **Selaidin Mamudoski** (clarinet), **Severdjan Azirov** (percussion), **Kujtim Ismailov** (bass) and **Muhamed Ismailov** (accordion, keyboard) in a concert and dance at the **Hollywood Ballroom, 2126 Industrial Parkway, Silver Spring, MD** (3.75 miles outside 495, off Colesville Rd.). Their incredibly thrilling blend of virtuosic technique, electrifying improvisation, rapid tempos, and daring key changes is a contemporary take on “wedding music,” named for its ubiquitous presence at Roma celebrations and rites of passage. Originally played only for, with, and by Roma, this music was driven underground in Bulgaria during the 1970s, but has re-emerged and is growing in popularity across Bulgaria, Romania, Greece, Macedonia and Turkey.



Tickets: \$20 Info: 301.717.4641

## Table of Contents FSGW

Advance Notices  
— 13 —

Board Members/Meeting  
— 22 —

Directions to Frequent Venues  
— 14 —

Editorial Policy  
— 14 —

43rd Annual  
FSGW Getaway  
— 10 & 23 (registration form) —

FREE MONTHLY  
PROGRAM  
Saturday, October 13  
THE JOHNSON GIRLS  
— 3 —

FSGW Co-sponsored Concert  
Saturday, October 7  
CATHY FINK &  
MARCY MARXER  
WITH AUTHOR  
DEBORAH TANNEN  
— 5 —

Sings/Swaps &  
Co-Sponsored Events  
— 7 —

## Features

Calendar  
— 12-13 —

Classifieds  
— 22 —

Concerts & Concert Series  
— 8 —

Dances  
— 9 —

Dance Classes  
— 16 —

Jams/Open Mics/  
Audience Participation  
— 17 —

Workshops, Weekends,  
Festivals & Special Events  
— 20 —

# FSGW Sunday Night Dances

at Glen Echo Park, MD • (Directions, page 14)

## Contras & Squares • 7:30 to 10:30 pm

Introductory lesson every Sunday from 7-7:30 pm

We're BACK in the Spanish Ballroom on October 28.



Join us for an evening of dance at Glen Echo Park. Every Sunday FSGW (in cooperation with the National Park Service, Montgomery County, and the Glen Echo Park Partnership for Arts and Culture) presents contras and squares danced to live music by fabulous bands with entertaining callers. Experienced and new dancers welcome; no partner needed. **Welcome/Orientation session every Sunday at 7 pm.** Come early to learn the basics or improve your allemandes! Dances often become more challenging as the evening progresses. Stay hydrated – bring water or a sports drink (no alcohol permitted in the Park). If you use scented products such as perfumes, note that some dancers have allergies – please apply it, if you must, with a light hand. Info: Robert Cox, [dance@fsgw.org](mailto:dance@fsgw.org).

Admission: \$9 for FSGW, BFMS, CDSS, and ATDS Members. \$12 for the general public

### October

- 7 **Laura Brown**, one of the **Hot Square Babes**, will kick off October calling to a **hot** band from the DC area, **The Loose Strings**, with **Scott Prouty** on fiddle, **Kate Brett** on banjo, **Ellen Hatton** on guitar, and **Kevin Enoch** playing bass and guitar.
- 14 Visiting us from Philly, **Hanny Budnick** will call her dynamic dances to the always-wonderful band **Devine Comedy**, featuring local favorites **John Devine** on guitar, **Marty Taylor** on woodwinds and concertina, and **Steve Hickman** on fiddle.
- 21 A special treat – caller **Carol Ormand** (from Madison, Wisconsin) will bring her wickedly fun dances to Glen Echo, where she will be joined by the excellent **Groovemongers**. Fiddler **Rebecca McCallum**, guitarist **C.W. Abbott** and keyboard virtuoso **Jane Knoekc** will keep you smiling with their world-beat jigs and reels.
- 28 It'll be a hot dance party in the Ballroom because the callers are the **Hot Square Babes** – quadruple threats **Anne Fallon**, **Janine Smith**, **Laura Brown**, and **Susan Taylor** will delight you with contras and squares called to music by **Dr. Twamley's Audio Snakes**. **Mike Rovine** on fiddle, **Celia Wycoff** on bass and recorder, **Jill Smith** on piano, and **Paul Oorts** on mandolin and accordion will wriggle and jiggle and tickle your tootsies.



## FSGW Midwinter Festival • Takoma Park, MD

Saturday, February 2, 2008 • noon-10:30 PM

Mark your calendar now. The 2008 edition of the FSGW Midwinter Festival (aka Mini-Fest) will take place on Groundhog Day, which makes a perfect excuse to host an all-day contra dance (noon to 10:30 pm) – at which we will, of course, do lots of contras with shadows. So, are you interested in performing (calling, playing, singing, dancing, hosting a workshop), or in financial gain (selling crafts)? How about doing some of the programming, and/or volunteering to help with load-in/load-out or taking on one 2-hour shift of overseeing this madness? Email yours truly, the newsletter editor, who is obviously crazy enough to take this on for another year. [Newsletter@fsgw.org](mailto:Newsletter@fsgw.org).



# THE JOHNSON GIRLS



## **Powerhouse Chanteys and More! Saturday, October 13 • 8 pm FREE to FSGW Members**

**Church of the Ascension, 633 Sligo Ave., Silver Spring, MD**

*The Johnson Girls* is an energetic all-woman a cappella (mostly) group performing both traditional and contemporary folk songs of the sea. Joy Bennett, Alison Kelley, Deirdre Murtha and Bonnie Milner each bring a specialty and style to the mix. They perform an extensive repertoire of work songs, ballads and chanteys, including songs with a strong Afro-Caribbean influence, as well as traditional and modern songs of Irish, Anglo-American, Italian and French Canadian origin. Widely acclaimed for their powerhouse performances and hair-raising harmonies, *The Johnson Girls* have performed at major festivals, and coffeehouses across the U.S. and internationally. Their audiences become part of the show, singing along with many of the songs. The concert is being held in the church itself.

**Admission: Free to FSGW Members and to members of the Church of the Ascension.**

**Non-members \$15; students with ID \$12.**

### **Directions: From the Beltway:**

Take Beltway (495) towards Silver Spring to Exit 31 B South (MD 97/Georgia Avenue) towards Washington. Go through downtown Silver Spring, and turn LEFT on Sligo at the fifth light after Colesville Road (last light before the railroad/Metro underpass.) Half a mile to 633 Sligo Avenue, on the left, between Carroll Ave and Schrider St.

**Alternate route:** Take Exit 28B, MD 650/New Hampshire Avenue South toward Takoma Park. At the 5th traffic light (bottom of a steep hill) turn right onto MD 320/Piney Branch Road. Go to the 8th traffic light (a half-block after after the 6/12 convenience store) and turn right onto Sligo Avenue. (The streets to the left are Wessex and Park Valley). Go three blocks down Sligo Avenue to 633 Sligo Avenue, on the right.

### **From Washington DC**

Go north on Georgia Avenue into Maryland. Turn right on Sligo Avenue (first street after the Metro/railroad underpass). Half a mile to 633 Sligo Avenue, on the left, between Carroll Ave and Schrider St.

**Parking:** Ample extra free parking at East Silver Spring Elementary School on Silver Spring Avenue (just across the street that runs behind the church). Turn onto Schrider Street (east of the church) and go one block to the stop sign at Silver Spring Ave. The school is on the far left corner. There's a back entrance to the church facing Silver Spring Ave. and the school. (624 Silver Spring Ave.) If you use the back entrance you need to go upstairs to the Church itself.

**Metro:** Take the Red Line to the Silver Spring station, and then Ride-On Number 16 bus.

**Handicapped access:** Those with Handicapped ID's on cars may park in the circle drive-way in front of the church. From the front of the church there is ramped access via left side of church to a door in the hall facing the rear.

Fully accessible unisex toilets. Elevator. Easiest from Silver Spring Ave.--use doors facing Silver Spring Ave., go to end of hall, and use elevator.

# FSGW English Country Dances at Glen Echo Town Hall, MD Wednesdays • 8 to 10:30 pm

(Directions, Page 14).



**Admission:** \$7 for FSGW members, \$9 for non-members.

Dance on a wood floor in the climate-controlled community room of the Glen Echo Town Hall (Directions, Page 14). **Please note change in location for Halloween dance.** Bring clean, non-scuffing shoes for dancing. Cheerful, patient, talented callers are accompanied by top-notch musicians. Each evening offers a different and delightful mix of instruments, including piano, fiddle, flute, harp, oboe, concertina, bassoon, viola, and recorder. Light refreshments served at the break. Experienced and new dancers welcome. No partner required.

**Info:** Stephanie Smith at 301.229.3577 or Roger Broseus at English@fsgw.org

## October

- 3 **Martha Seigel** calls to music by **Francine Krasowska** (piano), **Robin Wilson** (flute and concertina), and **Jeff Steinberg** (fiddle).
- 10 **Anna Rain** (recorders), **Karin Loya** (cello) and **Judy Meyers** (piano) will provide the music, while **Diane Schmit** leads the dancing.
- 17 **Dan Gillespie** calls while **Liz Donaldson** (piano), **Edith Coakley** (fiddle), and **Bruce Edwards** (bassoon and concertina) play the tunes.
- 24 **Jeff Steinberg** (fiddle), **Liz Donaldson** (piano), and **Colleen Reed** (flute) provide the music while **Susan Taylor** calls the dances.
- 31 **Church of the Redeemer, 6201 Dunrobbin Drive, just across the street from Glen Echo Town Hall.** **Liz Donaldson** will call bewitching dances to music by **Becky Ross**, **Walter Robinson**, and **Julia Gorka**.

## Family Dance • Glen Echo, MD • Sunday, October 14 • 3-5 pm

Bring yourself and your kids and your parents and your grandparents and your third cousins once removed to the Bumper Car Pavilion on Sunday afternoon, and meet **Hanny Budnick**, who is visiting from Philadelphia. Dancers of all ages and abilities will enjoy her clear calling and patient teaching. Providing the music will be **Devine Comedy** with guitarist **John Devine**, flutist **Marty Taylor**, and fiddler **Steve Hickman**. Admission is still only \$5 per person (age 4 and up) for an entire afternoon. This is a great activity for birthday parties, scouts, or family reunions. Please bring a snack/drink to share. More information at [www.fsgw.org](http://www.fsgw.org)



# Mothers and Daughters In Words and Music

Sunday, October 7 • 7:30 pm  
At Washington DC JCC • 1529 16<sup>th</sup> Street NW (16<sup>th</sup> & Q)



Photo by Irene Young

The Folklore Society of Greater Washington and the Women's Philanthropy of the Jewish Federation of Greater Washington are pleased to present bestselling author **Deborah Tannen** and Grammy-winning musical duo **Cathy Fink & Marcy Marxer** in a dynamic and entertaining program that celebrates the complex and often humorous relationship between mothers and daughters.

**Tannen** will discuss her bestseller *You're Wearing THAT? Understanding Mothers and Daughters in Conversation* and two-time Grammy Award winners **Cathy & Marcy** will perform songs from their CD *A Parents' Home Companion*. All three women approach human foibles with dead-on accuracy and indulgent humor. Tannen captures why conversations with your mother or your grown daughter can be the best or the worst of all possible conversations, and will interweave her real-life examples and comments with Cathy & Marcy's wonderful songs, such as the hilarious "Orange Cocoa Cake," a one-act play in 2 minutes and 30 seconds chronicling the challenge of having a phone conversation while your children are nagging you for snacks. And speaking of snacks, a reception and book and CD signing will follow the program.



Advance Tickets \$15, Member Price \$10 – to order, call Box Office Tickets at 800.494.TIXS or go to [www.washingtondcjcc.org/litfest](http://www.washingtondcjcc.org/litfest).

At the door: \$20, Member Price \$15

Info: 202.777.3250; [litfest@washingtondcjcc.org](mailto:litfest@washingtondcjcc.org);

[www.washingtondcjcc.org/litfest](http://www.washingtondcjcc.org/litfest).

## IONA • Saturday, October 27 • *continued from front page*

Now celebrating its 21st anniversary, **IONA** is one of the best pan-Celtic musical groups in the world. The current line-up features co-founders **Barbara Tresidder Ryan** (lead vocals, Celtic bouzouki, guitars and bodhran) and **Bernard Argent** (wooden flute, whistles, doumbek, back-up vocals), along with exciting young fiddler **Andrew Dodds**. Rounding out the group is **Chuck Lawhorn** on 6-string bass guitar, whistles and vocals.

**Tickets: \$15 for FSGW members, \$18 for non-members.** For more information about The Lyceum, including parking (The Lyceum is in Old Town Alexandria): [www.alexandriahistory.org](http://www.alexandriahistory.org). For additional information on the concert, contact Marty Summerour, 703.354.6460 or [special@fsgw.org](mailto:special@fsgw.org).

Special Information about upcoming co-sponsored event:

# Nowell Sing We Clear

Saturday, December 22 • McLean, VA

In cooperation with the Alden Theatre, FSGW will co-sponsor a performance of **Nowell Sing We Clear** on **Saturday, December 22**. Tickets are on sale now at the Alden Theatre box office. Ticket price is \$27 per person for the general public, but **FSGW members may purchase tickets at the significantly reduced price of \$19.**

To do this by mail, send your request to: **Alden Theatre Box Office, 1234 Ingleside Avenue, McLean, Virginia 22101**. In your cover letter, please state that you are an FSGW Member, provide your membership number [look at the newsletter label], provide a check for the appropriate number of tickets, and provide a return mailing address (or enclose an SASE).

To do this at the box office window [see address above], begin the transaction by telling the staff that you are an FSGW member. You will need to present your membership card; you may purchase tickets at the box office using cash, checks, or Visa or MasterCard.



## —— BOOKKEEPER WANTED ——

Interested in supporting FSGW? Are you a bookkeeper familiar with Quickbooks?

Please email Leslie Barkley at [treasurer@FSGW.org](mailto:treasurer@FSGW.org).

# Vocal Workshops

## November 2007 - March 2008

1-2 pm • Five Saturdays



A series of five classes (Saturdays: November 17, December 15, January 19, February 16, and March 8), limited to 12 students. This intimate class size will give all attendees the chance to get the most from their voices while protecting their vocal instrument from harm. Tutorial and student participation, led by **Charles Williams**, singer and vocal coach (a regular at Augusta Heritage Center Vocal Week). Classes are non-cumulative; you may sign up for one, all, or any combination. \$80 for the series, \$20 for each class; priority to those registering for the series. **Info: Dennis at 301.776.4314 or Dennis@DennisCook.net**

## FSGW Sings/Swaps & Co-sponsored Events

**FSGW Open Sing • Silver Spring, MD**  
*Friday, October 5 • 8:30 pm*

Judy Oppenheim is hosting October's FSGW Open Sing at her home in downtown Silver Spring (inside the Beltway). This month's theme: "It's just a harmless little bunny, isn't it? Animals great and small." Bring a folding chair. **Call for directions/info: 301.589.4008.** Allergy alert: one cat in residence.

**FSGW Storyswap • Gaithersburg, MD**  
*Saturday, October 20 • 7:30 pm*

Storytellers and listeners will gather at the home of Eve Burton in Gaithersburg for an evening of shared stories and potluck snacks — around a campfire if the weather cooperates, indoors if not. Free. Storytelling and storylistening children welcome. **301.926.4358 or ebnineteen@hotmail.com** for RSVPs and directions.

**FSGW Gospel Sing • Washington, DC**  
*Sunday, October 14 • 4-8 pm*

Gospel sings are held the second Sunday of every month at various homes. Singing starts at 4pm and breaks for a covered dish supper at 6pm with more singing after supper. Everyone is welcome! The October Gospel Sing will be at the home of **Debby Churchman and Joe Johnson**. Info/directions: **202.262.8523.**

**FSGW Sacred Harp Singing • Arlington, VA**  
*Sunday, October 28 • 4-8 pm*

St. Peter's Episcopal Church, 4250 N. Glebe Rd  
 "And shout and sing the good old way." FSGW sponsors 4<sup>th</sup> Sunday group singings of shape-note hymns and fugues in unaccompanied four-part harmony at St. Peter's Episcopal Church, 4250 N. Glebe Rd. We'll sing from the 1991 *Sacred Harp* and maybe *Christian Harmony* (loaner books available) from 4 to 6, share a potluck supper, then sing some more. Free. **Info: 301.229.8534.**

**Directions:** St. Peter's is 0.5 miles south of Chain Bridge, on the west side of Glebe Rd (coming from Washington, on your right; from Virginia, on your left). The church is not visible from Glebe Rd, but its sign is. Turn on Tazewell to reach the parking lot.

### Co-Sponsored Event

**Glen Echo International Folkdancers**  
**Glen Echo, MD**  
*Thursdays, 7:30-10:45 pm*

Every Thursday at the Church of the Redeemer, 6201 Dunrobbin Drive (just west of the shopping center across from Glen Echo Park). Lesson at 7:30. Request dances from 9-10:45. Mostly recorded music. No partner or experience necessary. Wear comfortable clothing and soft-soled shoes. Admission \$5. **Info: Jamie at 301.466.3018 or dancingplanet@erols.com**



## Concerts & Concert Series

### Individual Concerts listed chronologically

#### Squeeze Bayou Concert & Dance • Silver Spring, MD Thursday, October 4 • 7:30 pm

Part of the monthly Cajun Dance and Concert Series. Los Arrieros Restaurant, 7926 Georgia Ave. \$10. Come to eat, dance, or just listen. No partner or dance experience necessary. Info: 301.585.8813

#### Wiyos Old-Time Music Concert • Alexandria, VA Friday, October 5 • 8 pm

Sunspot begins its season with exuberant and idiosyncratic music inspired by American musical idioms of the 1920s and 1930s. **The Wiyos** mix blues with country, ragtime with gospel, and swing with hillbilly, charming everyone as they subvert musical genres. The Lyceum, 201 S. Washington St., \$18 advance, \$20 door, under 14 half price when accompanied by an adult. Info: [www.sunspotpro.com](http://www.sunspotpro.com) or 800.404.9049

#### Emily Smith Band Concert • Westminster, MD Saturday, October 6 • 8 pm

Common Ground on the Hill presents this Young Traditional Musician of the Year. \$17 or \$15 for seniors or students with ID. Info: [cground@qis.net](mailto:cground@qis.net) or 410.857.2771

#### Mark Elliott Concert • Herndon, VA Tuesday, October 9 • 7 pm

One of Nashville's most sought-after writers whose songs frequently top the charts. Folk Club of Reston-Herndon, Tortilla Factory Restaurant, 648 Elden St. Doors open 6pm; \$12 (\$11 Folk Club members) 703.435.2402, [clubacoustic@cox.net](mailto:clubacoustic@cox.net), [www.reston-herndonfolkclub.com](http://www.reston-herndonfolkclub.com)

#### Weil Sing House Concert • Takoma Park, MD Saturday, October 13 • 8 pm

**Orrin Star Duo.** For location/reservations email [Weil@cua.edu](mailto:Weil@cua.edu) or [www.orginstar.com](http://www.orginstar.com)

#### Carey Creed Concert • Rockville, MD Saturday, October 13 • 7:30 pm

St. Mark Presbyterian Church, 10701 Old Georgetown Road. Money from ticket sales to benefit Community Ministry of Montgomery County. \$12 advance, \$15 door. Reservations 301.530.2513 or [events@saint-markspsresby.org](mailto:events@saint-markspsresby.org).

#### Tannahill Weavers • Rockville, MD Sunday, October 14 • 7:30 pm

Exuberant Scottish music, presented by IMT, St. Mark Presbyterian Church, 10701 Old Georgetown Rd. \$15 advance /\$20 door. Info: 301.754.3611

#### Zedashe Ensemble Concert • Washington, DC Sunday, October 14 • 6 pm

Sacred chants, folk songs, circle dances, and instrumental music from the vineyard region, Republic of Georgia. Katzen Center, 4400 Massachusetts Ave. \$40 includes a Georgian wine reception after the concert. Info: [www.villageharmony.org/Zedashe2007](http://www.villageharmony.org/Zedashe2007) or <http://www.focusmusic.org> 202.885.3634

#### Focus Inn Alexandria • Alexandria, VA Sunday, October 14 • 7 pm

Texas-based folk/pop duo **The Dreamsicles** (Tom Prasada-Rao and Cary Cooper) sing love songs for grown-ups at Church of the Resurrection, 2280 N. Beauregard St, Alexandria. \$15 general public/\$12 members. Info: Herb at [herbcl@earthlink.net](mailto:herbcl@earthlink.net), 703.380.3151, or [www.focusmusic.org](http://www.focusmusic.org).

#### Mediaeval Baebes Concert • Rockville, MD Friday, October 19 • 7:30 pm

Presented by IMT, St. Mark Presbyterian Church, 10701 Old Georgetown Rd. \$20 advance/\$25 door. Info: 301.754.3611

#### La Musga Concert • Shepherdstown, WV Sunday, October 21 • 7:30 pm

Sinuous, syncopated music from Central Spain. Free at Shepherd University's Reynolds Hall, corner of King and German Streets. Donations. Info: [www.smad.us](http://www.smad.us), [updf@earthlink.net](mailto:updf@earthlink.net), or 304.263.2531

#### American Banjo Fraternity concert • Punxsutawney, PA Saturday, October 27 • 7:30 pm

1900s concert style playing (non-metal strings, no picks). Pantall Hotel, 135 E. Mahoning St., Free, but reservations encouraged. Info: [msmith07@rochester.rr.com](mailto:msmith07@rochester.rr.com) or [www.abfbanjo.org](http://www.abfbanjo.org) <http://www.focusmusic.org>.

### Concert Series

#### listed by day of the week

##### Mondays

#### Institute of Musical Traditions • Rockville, MD

Weekly concerts at St. Mark Presbyterian, 10701 Old Georgetown, Rockville, MD 20852. Shows begin at 7:30; Admission: \$14/\$17. More info: 301.754.3611

#### October

- 1 Verlette Simon
- 8 Danny Knicely, the Orete Brothers & Ralph Gordon

**Concerts & Concert Series continued**

- 15 **Traveling Banjo Academy Workshop Concert**  
 22 **Pint 'n Dale with Calico Jack**  
 29 **Brooks Williams and Siobhan Quinn & Michael Bowers**

**Wednesdays****Vic's Music Corner • Rockville, MD**

Focus Inn presents Vic's Music Corner on 2<sup>nd</sup> and 4<sup>th</sup> Wednesdays, O'Brien's BBQ, 387 E Gude Dr. Shows begin at 8 pm. \$12 members/\$15 general public. Info: David at [focusrockville@earthlink.net](mailto:focusrockville@earthlink.net), 301.275.7459, or [www.focusmusic.org](http://www.focusmusic.org)

**October**

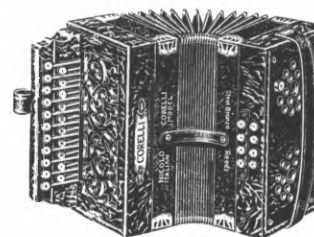
- 10 **Liz Carlisle with Russell Wolff**  
 24 **Amy Speace with The Tearjerks and Trina Hamlin.**

**Thursdays****Baldwin's Station • Sykesville, MD**

Twice monthly Thursday concerts at 7618 Main St, Sykesville, MD. Info: 410.795.1041 or [www.uptownconcerts.com](http://www.uptownconcerts.com)

**October**

- 4 **Sons of the Never Wrong** - folk trio from Chicago  
 18 **Bryan Bowers** - Virtuoso autoharp

**Dances****Contra****Sundays**

**The FSGW Sunday Night Dances  
are listed on page 2.**

**Wednesdays****Baltimore Folk Music Society • Baltimore, MD**

**Wednesdays • 8-10:30 pm**

Lovely Lane Ch., 2200 St. Paul St, Baltimore. Beginners are always welcome. Free lesson at 7:30 on 2<sup>nd</sup> and 4<sup>th</sup> Wednesdays. Nationally-known musicians and callers appear regularly. Admission: \$8 Members/\$12 Non-members, \$3 discount to students w/ID.

**October**

- 3 Asheville NC's **Adina Gordon** calling to **Crowfoot**  
 10 Local favorite **Susan Taylor** with music by **Live Culture**  
 17 Caller **Susan Hankin** with the **Contra Rebels**  
 24 **Ted Crane** from Ithaca NY calls to **Baltimore Fire**  
 31 Halloween party! Caller **Perry Shafran**, music by **Marc Glickman** and friends

**Fridays****Friday Night Dancers • Glen Echo Park, MD**

**Fridays • 8:30-11:30 pm**

The Friday Night Dancers (in cooperation with the National Park Service, Montgomery County, and the Glen Echo Park Partnership for Arts and Culture) sponsor weekly contra dances in the Glen Echo Spanish Ballroom. New dancer class every Sunday at 7:30.

\$9 per person. Info: [fndgigs@petml.com](mailto:fndgigs@petml.com) or [www.fridaynightdance.org](http://www.fridaynightdance.org)

**October**

- 5 Caller **Adina Gordon** with **Crowfoot**  
 12 Caller **Jeremy Korr** with **Glen Echo Open Band.**  
 19 Caller **Ted Hodapp** with **Metro Gnomes**  
 26 Caller **Gaye Fifer** with **Klezmos**

**Locust Lane Contra • Harrisburg, PA**

**2<sup>nd</sup> and 4<sup>th</sup> Fridays • 8-11 pm**

Air-conditioned hall, all ages and experience levels welcome. Light refreshments at the break, donations welcome. New dancer class at 7:30. \$8 Members/\$9 Non-members/\$4 students. Info: [harrisburgcontra.org](http://harrisburgcontra.org)

**Saturdays****Elverson Dance • Elverson, Pa**

**1<sup>st</sup> Saturdays • 7:30-10:30 pm**

St. Mary's Episcopal Church, 61 Morningside Drive (3 miles east of downtown Elverson). \$8, \$5 for students and seniors. New dancers welcome. Smoke free, alcohol free. Beginners' lesson at 7. Children must be chaperoned. Info: **Nancy Katzen, 610.780.5667**

**Baltimore Folk Music Society • Pikesville, MD**

**2<sup>nd</sup> Saturdays • 8-11 pm**

**No Saturday dance in October.**

**Annapolis Traditional Dance • Annapolis, MD**

**3<sup>rd</sup> Saturdays • 7 pm**

Quaker Friends Meeting House, 351 DuBois Rd, Annapolis. Potluck at 5:30. \$7 Members/\$10 Non-members. Info: [www.smtmd.org](http://www.smtmd.org)

# 43rd Annual Getaway

November 2 - 5, 2007

## West River Conference Center, West River, Maryland

The days are getting shorter, the air has begun to cool, the trees are giving us their final colors of the year-- Fall is here, and time for the Getaway once again! Our annual weekend of music, storytelling, friendship and fun will come this year on the first weekend of November, at the lovely West River site near Annapolis.

This year we will have the pleasure of welcoming guests **John Roberts, Joe Newberry, Colleen Cleveland, Sylvia Herold, Lani Herrmann** and **Gordon Bok**, who will join us in workshops, concerts and pretty much nonstop music from the Friday night potluck through late night Sunday singing.

If you need a break, comfortable bunks in heated (yes, I did say heated!) cabins await the weary, with indoor plumbing right down the hall. But you should probably rest up before you come; the intensity of the musical experience that the Getaway provides has been known to keep folks up late and rising early, so as not to miss a moment of the weekend. See you at the Getaway!

The weekend starts with a potluck dinner on Friday night, whenever you can get there (we'll try to have things set up for your arrival by 4 pm), and it runs into the night on Friday, and all day Saturday and Sunday. We go so late on Sunday night that we'll serve breakfast on Monday morning if you want to stay for it. We even have a kitchen available to ourselves at all hours, equipped with refrigerator, freezer and microwaves, if you need an in-between snack.

The West River Center features many places to make music, in groups large and small.

There are 50 bedrooms in 6 buildings. All beds have comfortable mattresses (bring your own pillows, bedding, and towels). We'll give you a discount if you'll volunteer for an upper bunk. There's handy flush plumbing and hot showers (with separate men's and women's facilities in each building).

Most buildings are handicapped accessible. If you cannot handle an upper bunk, or have further special needs, let us know on the registration form. If you wish to bring a tent or an RV, you may do so and guarantee your privacy, but there are no hook-ups, and you'll have to pay the same fees as those occupying a room, because that's what the camp charges us.

We have rates for one, two, or three nights, and one for day-trippers who don't want to eat. (You MUST register in advance if you wish to dine!)

The weekend starts Friday evening with a potluck dinner. If you register for two nights, your registration fee covers three meals and a midnight snack both days on Saturday and Sunday. Three-night registration gives you an additional night's lodging and breakfast on Monday morning. One-night registration gives you all meals and snacks on either Saturday or Sunday and, if you wish, a bed on either adjacent night.

There is NO SMOKING allowed in any of the camp buildings. Because it's a camp run by the Methodists, we are asked not to bring any alcohol.

You can see more about our conference center at its website: <http://www.bwcumc.org/page.asp?PKValue=598>

**The Registration form is on page 23 with all cost information.**

West River is a 19 miles South of Annapolis. Folks coming from Virginia and the South get off the Beltway onto Pennsylvania Avenue (MD4) near Camp Springs (Exit 11). Folks from the Northern suburbs of DC go out Route 50 to Annapolis and then South for about 19 miles. From Baltimore and BWI, I-97 leads south to Annapolis, and for folks from Delaware, New Jersey, and points North, you can go south in Delaware and cross the Bay Bridge (US 50) at Annapolis to bypass Baltimore. It's within an hour's drive of most of the D.C. area (your mileage may vary).

Newberry.

and Joe

Photos: Colleen Cleveland, Sylvia Herold, Gordon Bok, John Roberts



*Dances continued***Lancaster Contradance • Lancaster, PA***3<sup>rd</sup> Saturdays, 7-10 pm*

Donna Hunt calling to *Dr. Twamley's Audio Snakes*. St. John's Episcopal Church 321 W. Chestnut St. Beginners workshop 7 Dance 8-11 pm. \$7. Info: Shane 717.431.7417 or sam@mcc.org or www.lancastercontra.org

**Frederick Contra Dance • Frederick, MD***4<sup>th</sup> Saturdays • 8-11 pm*

At Trinity School, near the Harry Grove Stadium. Admission \$8.

**October**

27 Caller Laura Brown, with Jaige Trudel and Adam Broome (of Crowfoot)

*English Country***Mondays****Baltimore Folk Music Society • Pikesville, MD***Mondays • 8-10:30 pm*

English Country Dancing is lively movement to elegant music in a friendly informal setting. All dances are taught and walked through. New dancers are welcome. Admission \$7 Members, \$10 Non-members, \$2 student discount. St. Mark's on the Hill Parish Hall, 1620 Reisterstown Rd, 0.5 miles from Balt. Beltway Exit 20 South. Info: Mike Franch at 410.889.3252 or engdance@bfms.org

**October**

- 1 Callers Mike Franch, Carl Friedman and Sharon McKinley, music by Emily Aubry, Marty Taylor and Julie Gorka
- 8 Caller Carl Friedman, music by *Geud Band of Baltimore*.
- 15 Caller Liz Donaldson, music by Becky Ross, Paul Oorts and Jonathan Jensen
- 22 Caller Sharon McKinley, music by Carl Friedman, Robin Wilson, Judy Meyers.
- 29 Caller Diane Schmit and a Mystery Caller, music by Jeff Steinberg, Karin Loya and Liz Donaldson. *Come dressed as your favorite dance.*

**Tuesdays****English Country Dancing • Herndon, VA***2<sup>nd</sup> and 4<sup>th</sup> Tuesdays • 7:45-10 pm*

Harding Hall, 730 Jackson Tr. Workshop includes figures, phrasing, and style. Live music (guest musicians welcome - call in advance). \$5 No partner or experience necessary. Info: Barbara Harding at 703.437.3615.

**Wednesdays**

**The FSGW English County Dances  
are listed on Page 4.**

**Saturdays****English Country Dance • Silver Spring, MD***Saturday, October 13 • 8-10:45 pm*

At Sligo Middle School, 1401 Dennis Ave. Dance to music by *Peascods Gathering*, calling by Barbara Harding and Bob Farrall. Beginners and singles welcome. \$5. Info: Carl Minkus 301.493.6281, Bob Farrall 301.577.5018.

*Family*

**The FSGW Family Dance  
is listed on Page 4.**

**BFMS Family Dance • Pikesville, MD***No dance in October*

Info: Diane at 410.321.8419, or matchmaker2@comcast.net

*International***Mondays****Bethesda International Folk Dancers • Bethesda, MD***Mondays • 7:30-10pm*

No partner necessary, all ages and levels of expertise welcome. Beginners: 7:30-8:10. Intermediate/Adv.: 8:10-10pm. Mostly recorded with occasional live music. \$6 per class. Leland Community Center, 4301 Willow Lane. Alternate location, Women's Club of Bethesda, 5500 Sonoma Rd (across from NIH). \$7 per class.

Info: Phyllis or Brandon Diamond at 301.871.8788, www.diamonddancecircle.com or diamonddancecircle@comcast.net.

**Tuesdays****Arlington International Folk Dancing • Arlington, VA***Tuesdays • 8-10 pm*

Key Elementary School, Veitch St., between Wilson and Key near Courthouse Road Metro. Folk Dance for Fun. Admission \$5 Recorded music, instruction, walk-throughs, and requests. Singles welcome, all ages or levels of expertise. Info: Sam or Sarah 703.527.8998 or sstulberg@earthlink.net or Kent Hibben at 301.520.3794 or kenthibben@hughes.net




**Thursdays**

*The FSGW Glen Echo Folkdancers are listed on Page 7*

**Chevy Chase International Folk Dancers • Washington, DC***Thursdays • 7:30-9:30 pm*

Chevy Chase Community Center, 5601 Connecticut, NW (at McKinley). Instruction and walk-through until 8:30. All levels welcome, no partner necessary. Recorded music. Leader: Roland Forbes. Info: Jackie Davis at 301.424.8827 or Naomi Rogers at 301.438.0063

# October 2007

Sunday	Monday	Tuesday	Wednesday	Thursday
	<b>1</b> 7:30 Bethesda International 7:30 Kensington Israeli 7:30 Arlington Morris 7:30 IMT Concert 8 Baltimore English 8 Bethesda Scottish 8 Balkan Singing	<b>2</b> 7 Gathersburg Irish Ceili <b>8 FSGW BOARD MEETING</b> 8 Greenbelt Scottish 8 Arlington Int'l Folk 8 Sea Chanteys /Wheaton	<b>3</b> <b>8 FSGW ENGLISH COUNTRY DANCE</b> 8 Baltimore Contra 8 Alexandria Scottish 8:15 Potomac Israeli	<b>4</b> 7 F <b>7:30 F</b> <b>RO</b> <b>7:30 C</b> 7:30 R 7:30 C 7:45 A 8 M 8 F 8 B 8 Am 8:30 Fre
<b>7</b> 9 am Annapolis Jam 3 pm Scottish Jam 3 Glen Echo Waltz 7 Black Book Singers <b>7:30 FSGW MOTHERS AND DAUGHTERS CONCERT</b> <b>7:30 FSGW CONTRA</b> <b>LAURA BROWN CALLING TO LOOSE STRINGS</b>	<b>8</b> 6:30 Children's Irish Music 7 DC Bluegrass Jam 7:30 Bethesda International 7:30 Kensington Israeli 7:30 Arlington Morris 7:30 IMT Concert 8 Baltimore English 8 Bethesda Scottish 8 Balkan Singing	<b>9</b> 7 Gathersburg Irish Ceili 7:30 Reston/Herndon Folk 7:45 Herndon English 8 Greenbelt Scottish 8 Arlington Int'l Folk 8:30 Hot Squares	<b>10</b> <b>FSGW NEWSLETTER DEADLINE</b> 7 Laurel Jam <b>8 FSGW ENGLISH COUNTRY DANCE</b> 8 Baltimore Contra 8 Alexandria Scottish 8 Sea Chantey Baltimore 8 Alexandria Scottish 8 Vic's Music Concert 8:15 Potomac Israeli	7 F <b>7:30 C</b> 7:30 R 7:30 C 7:45 A 8 M 8 F 8 A 8:30 F
<b>14</b> 9 am Annapolis Jam 2 pm CABOMA Jam 3 Ballroom Tea Dance <b>4 FSGW GOSPEL SING</b> 7:30 IMT Concert <b>7:30 FSGW CONTRA</b> <b>HANNY BUDNICK TO DEVINE COMEDY</b>	<b>15</b> 7:30 Bethesda International 7:30 Kensington Israeli 7:30 Arlington Morris 7:30 IMT Concert 8 Baltimore English 8 Bethesda Scottish 8 Balkan Singing	<b>16</b> 7 Gathersburg Irish Ceili 7 Reston/Herndon Folk 7:45 Arlington Circle 8 Greenbelt Scottish 8 Arlington Int'l Folk	<b>17</b> 7 Arlington Jam <b>8 FSGW ENGLISH COUNTRY DANCE</b> 8 Baltimore Contra 8 Alexandria Scottish 8 Sea Chantey Annapolis 8 Alexandria Scottish 8:15 Potomac Israeli	7 F <b>7:30 C</b> 7:30 R 7:30 C 7:45 A 8 M 8 F 8 A 8 B 8:30 F
<b>21</b> 9 am Annapolis Jam 3 pm Glen Echo Waltz College Park Ceili 7 Shepherdstown Concert <b>7:30 FSGW CONTRA</b> <b>CAROL ORMAND WITH GROOVEMONGERS</b>	<b>22</b> 7 DC Bluegrass Jam 7:30 Bethesda International 7:30 Arlington Morris 7:30 Kensington Israeli 7:30 IMT Concert 8 Baltimore English 8 Bethesda Scottish 8 Balkan Singing	<b>23</b> 7 Gathersburg Irish Ceili 7 Sea Chantey/Falls Church 7:30 Reston/Herndon Folk 7:45 Arlington Circle 7:45 Herndon English 8 Greenbelt Scottish 8 Arlington Int'l Folk	<b>24</b> 7 Laurel Jam 7:30 Cajun Jam <b>8 FSGW ENGLISH COUNTRY DANCE</b> 8 Baltimore Contra 8 Alexandria Scottish 8 Sea Chantey Charlestown 8 Alexandria Scottish 8 Vic's Music Concert 8:15 Potomac Israeli	7 F <b>7:30 C</b> 7:30 R 7:30 C 7:45 A 8 M 8 F 8 A 8:30 F
<b>28</b> 9 am Annapolis Jam 2 pm CABOMA Jam <b>4 FSGW SACRED HARP</b> <b>7:30 FSGW CONTRA</b> <b>HOT SQUARE BABES CALL WITH DR. TWAMLEY'S AUDIO SNAKES</b>	<b>29</b> 6:30 DC Bluegrass Jam 7:30 Bethesda International 7:30 Arlington Morris 7:30 Kensington Israeli 7:30 IMT Concert 8 Baltimore English 8 Bethesda Scottish 8 Balkan Singing	<b>30</b> 7 Gathersburg Irish Ceili 7:30 Reston/Herndon Folk 7:45 Arlington Circle 8 Greenbelt Scottish 8 Arlington Int'l Folk 8 Sea Chantey/Falls Church	<b>Halloween 31</b> 7 Laurel Jam <b>8 FSGW ENGLISH COUNTRY DANCE</b> 8 Baltimore Contra 8 Alexandria Scottish 8:15 Potomac Israeli 	<b>31</b> "Li We 



Thursday 4	Friday 5	Saturday 6
Frederick Irish Session <b>FSGW COSPONSORED:</b> <b>OMANI WEDDING BAND</b> <b>GLEN ECHO INT'L FOLK</b> Rockville Irish Set Chevy Chase Int'l Folk Arlington Circle Dance Mt. Vernon Int'l Folk Foggy Bottom Morris Baldwin's Station American Balalaika Frederick Bluegrass	7 Arlington Jam 7:30 Olney Songwriters 8:15 Greenbelt Int'l Folk <b>8:30 FSGW OPEN SING</b> 8:30 Friday Night Contra	10am Batala Percussion 12pm Mandolin Workshop 2 Archie Edwards Blues 2 Arlington Singalong Jam 8 Norwegian Dance 8 Glen Echo Swing Dance
11	12	13
Frederick Irish Session <b>GLEN ECHO INT'L FOLK</b> Rockville Irish Set Chevy Chase Int'l Folk Arlington Circle Dance Mt. Vernon Int'l Folk Foggy Bottom Morris American Balalaika Frederick Bluegrass	8 Harrisburg Contra 8:15 Greenbelt Int'l Folk 8:30 Friday Night Contra	10am Batala Percussion 2pm Archie Edwards Blues 2 Folk Music/Song Jam 6 Balktoberfest 7:30 Springfield Open Mic <b>8 FSGW MONTHLY PROGRAM:</b> <b>JOHNSON GIRLS</b> 8 Silver Spring English Dance 8 Baltimore Playford Ball
18	19	20
Frederick Irish Session <b>GLEN ECHO INT'L FOLK</b> Rockville Irish Set Chevy Chase Int'l Folk Arlington Circle Dance Mt. Vernon Int'l Folk Foggy Bottom Morris American Balalaika Baldwin's Station Frederick Bluegrass	7:30 Olney Songwriters 7:30 IMT Concert 8:15 Greenbelt Int'l Folk 8:30 Friday Night Contra	10am Batala Percussion 2pm Archie Edwards Blues 2 Arlington Singalong Jam 7 Annapolis Contra 7 Greenbelt Scandinavian <b>7:30 FSGW STORYSWAP</b>
25	26	27
Frederick Irish Session <b>GLEN ECHO INT'L FOLK</b> Rockville Irish Set Chevy Chase Int'l Folk Arlington Circle Dance Mt. Vernon Int'l Folk Foggy Bottom Morris American Balalaika Frederick Bluegrass	8 Harrisburg Contra 8 Potter's House 8:15 Greenbelt Int'l Folk 8:30 Friday Night Contra	10am Batala Percussion Vienna Songwriters 10:30 Blues Piano Workshop 1:30pm Hammer Dulcimer Jam 2 Archie Edwards Blues <b>8 FSGW IONA CONCERT</b> 8 Frederick Contra 8 Haunting Tales 8:15 Greenbelt Israeli

sten! The wind is rising, and the air is wild with leaves,  
 e have had our summer evenings, now for October eves!"



Humbert Wolfe

## FSGW Advance Notice

November 2-5,  
**43RD ANNUAL GETAWAY**  
 West River Retreat Center,  
 Edgewater, MD

**Saturday, November 3 • 8 pm**  
**LIL' REV**  
 FSGW House Concert  
 Reitz's (Derwood, MD)

**Tuesday, November 6, • 8 pm**  
**CLARKE BUEHLING**  
 Virtuoso of 19th Century Banjo  
 FSGW House Concert  
 location TBA

**Saturday, November 10 • 8 pm**  
**Keith Kendrick**  
 English Traditional singer  
 FSGW FREE Monthly Program—  
 location TBA

**Thursday, November 15 • 8 pm**  
**Judy Cook**  
 FSGW CD release concert  
 Tenting Tonight -Songs of the Civil War  
 Glen Echo Town Hall (Glen Echo, MD)

**Saturday, November 17 • 8 pm**  
 FSGW CD Release:  
 English Country Dance/Concert  
**Liz Donaldson,**  
**Colleen Reed,**  
**Becky Ross**  
 Location TBA

**Friday-Sunday**  
**November 16-18, 2007**  
**NY Eisteddfod**  
 Jackson Heights, Queens, NY

**Sunday, November 25, • 8 pm**  
 FSGW Concert  
**Karelian Folk Music**  
**Ensemble**  
 Location TBA



## *FSGW Newsletter Editorial Policy*

The Folklore Society of Greater Washington endeavors to print copy it deems relevant to its membership and purpose as stated in its by-laws:

***"The main purpose of the Society is to further the understanding, investigation, appreciation, and performance of the traditional folk music and folklore of the American people."***

- All copy (except classified ads) must be submitted by e-mail to [newsletter@fsgw.org](mailto:newsletter@fsgw.org) in text format in the body of the email by the 10th of the preceding month.
- Please review comparable entries from the Newsletter and edit accordingly.
- The Editor reserves the right to edit or omit copy as necessary.

**Editor: April Blum • [newsletter@fsgw.org](mailto:newsletter@fsgw.org) • 703-978-2774**

**Design & Layout: Jennifer Woods GRAPHICS • Silver Spring, MD • 301-587-7174**

## *Driving & Mass Transit Directions to Frequent Venues:*

### **Glen Echo Park, MD • Spanish Ballroom/Bumper Car Pavilion 7300 MacArthur Blvd. At Goldsboro Rd., Glen Echo, MD**

The Bumper Car Pavilion is located just past and to the right of the Carousel. The Spanish Ballroom is to the right of the Bumper Car Pavilion.

#### **FROM THE BELTWAY:**

**Maryland Side:** at 2-lane Exit 40 take the left fork for the Cabin John Parkway. Where Cabin John merges with the Clara Barton Parkway, move into the left lane, under the overhang.

**Virginia side:** Get into the far right hand lane at the top of the bridge. At the first fork, bear right. Stay in the left lane; watch for Cabin John traffic merging from the right at the overhang.

**MD&VA:** Watch for signs to MacArthur Blvd. Make a very sharp hairpin turn and move immediately into the right lane. At the T intersection/stop sign, turn left onto MacArthur Blvd. The Upper parking lot is on the left. For the lower parking lot, go around the small traffic circle and make the first left onto Oxford St.

**BY PUBLIC TRANSPORTATION:** Take the #29 Bus from the Friendship Heights Metro Station. Ask the driver to let you know when to get off for Glen Echo Park. The bus stops running before the last dance ends. Ask the dance coordinator to announce that you need a ride. We've never left anybody at the Park. Last bus leaves Friendship Heights Metro at 7:30 pm.

### **Glen Echo Town Hall 6106 Harvard St., Glen Echo, MD:**

Same as for Glen Echo Park, save that Harvard Street is the THIRD left off of MacArthur Blvd. After the traffic circle.

**PLEASE NOTE:** Park in the lot behind the hall, on University Drive, or on the east side of MacArthur Blvd, **NOT** on Harvard St.

### **St. Mark's Presbyterian Church 10701 Old Georgetown Road, Rockville, MD 20852 • [www.stmarkspresby.org](http://www.stmarkspresby.org)**

#### **FROM THE BELTWAY:**

**Virginia Side:** Exit 36, Route 187 North (Old Georgetown Road). Left on Route 187. Continue past Wildwood Shopping Center on right and over I-270. Next right is church driveway.

**Maryland from Silver Spring area:** After crossing Rockville Pike, follow I-270 North. Continue on I-270 to first exit, Route 187 (Old Georgetown Road). Right on Route 187. Next right is church driveway.

#### **FROM I-270 — FROM THE NORTH**

Continue on I-270 and follow left fork where I-270 divides. Right on first exit (Route 187, Old Georgetown Road). At second traffic light, turn left onto Old Georgetown Road. After going back over 270, church is first driveway on right.

#### **From DC:**

Wisconsin Avenue through Bethesda and past Bethesda Naval Hospital. Left on Cedar Lane. Right on Route 187 (Old Georgetown Road). Continue past Wildwood Shopping Center on right and over I-270. Next right is church driveway.

#### **VIA METRO:**

## Dances continued

### Circle Dance Arlington, VA

**Thursdays • 7:45-9:45 pm**

Beginners especially welcome 1<sup>st</sup> and 3<sup>rd</sup> Thursdays. Dances on 2<sup>nd</sup> and 4<sup>th</sup> Thursdays are more advanced. All dances are taught. Recorded music. Unitarian Universalist Church of Arlington, Rte 50 at George Mason Dr. \$10 per session or pay a reduced fee for a series. **Info: Judie David at 703.451.2595 or Veda-vid@starpower.net.**

### Mount Vernon International Folk Dancing • Alexandria, VA

**Thursdays • 8-10 pm**

Mount Vernon Unitarian Ch., 1909 Windmill Lane. All levels welcome. Teaching 8-8:30, followed by requests, walk-throughs, advance instruction. Beautiful dance floor. Donation \$2.50. **Info: 703.780.2393 or kkrogh@aol.com**

### Fridays

### Greenbelt International Folk Dancing • Greenbelt, MD

**Fridays • 8:15-10:45 pm**

Greenbelt Community Center Dance Studio, 15 Crescent Rd. Focus is dance from Eastern Europe and Scandinavia. No partner or experience necessary. Mostly recorded music. Beautiful dance floor. Teaching 8:15-9, requests from 9-10:45. \$7/\$10 on 1<sup>st</sup> Fridays (live music). **Info: Larry Weiner at 301.565.0539, larry@larry-weiner.com or John Robinson at 410.715.9210**

### Israeli

### Israeli Dancing • Kensington, MD

**Mondays • 7:30-11 pm**

Temple Emanuel, 10101 Connecticut Ave. Circle dances 7:30-9:30, couple dances 9:30-11. \$7/Students \$5. **Info: Moshany, 240.350.3110, maspro@verizon.net**

### Israeli Dancing • Potomac, MD

**Wednesdays • 8:15-10 pm**

Har Shalom Congregation, 11510 Falls Rd., Potomac (between Democracy Blvd. and Montrose Rd.). "Oldies" only (dances before 1990). Instruction 8:15-8:45, Requests 8:45-10. Recorded Music. \$5. **Info: Ben Hole 301.441.8213.**

### Israeli Dancing • Greenbelt, MD

**Saturday, October 27, 8:15-11 pm**

Israeli "Oldies" party (dances before 1990). Recorded music, light refreshments. Greenbelt Community Center, 15 Crescent Road. \$5. **Info: Ben Hole, 301.441.8213.**

## Morris

### Arlington Northwest Morris • Arlington, VA

**Mondays • 7:30-9 pm**

Learn and perform the traditional morris dances of Northwest England which combine simple footwork with power and precision. We are a welcoming group of women who practice in a great place with a wooden floor (easier on your knees) at the Unitarian Universalist Church. **Info: Suzanne @suzelise@comcast.net or Laura @LLPar42@aol.com**

### Rock Creek Morris Women • Silver Spring, MD

**Wednesdays • 7:5 pm**

Learn to dance in the ancient English morris tradition, and you'll get all the aerobics you need. Join a strong community that dances, plays, sings, and drinks together. Montgomery Knolls Elementary School, 807 Daleview Dr. **Info: 301.927.6373, louiseneu@earthlink.net or www.uswet.com/RCMW.html**

### Foggy Bottom Morris Men • Silver Spring, MD

**Thursdays • 8-10 pm**

Learn and perform long-sword, traditional dances from English villages, and seasonal mumming. Anyone who enjoys dance and movement can experience the vigorous thrill of the morris! We welcome new and slightly used dancers at practices (and at the Quarry House afterwards). Highland View Elementary School, 9010 Providence Ave. **Info: Brad Graham, 410.480.3289 or www.fbmm-morris.org**

## Scandinavian

### Norwegian Dance House Party • Takoma Park, MD

**Saturday, October 6 • Potluck 6:30, Dancing 8 pm**

Bring clean shoes to wear, food to share, and \$\$ you can spare to 6807 Westmoreland Ave. Mesmerizing live music by Grammy-nominated hostess Loretta Kelley on the unique Hardanger fiddle (see hfaa.org). Beginners welcome. Host: 301.270.4925. **Info/dirs: Jenny, pi@xecu.net, 301.371.4312**

### Scandinavian Dance • Greenbelt, MD

**Saturday, October 20 • 7-10 pm**

Scandia DC sponsors a 3<sup>rd</sup> Saturday dance, this month with fiddler **Andrea Hoag** and the **Scandia DC Spelmannslag**. No partners necessary. Teaching from 7-8. This month features Finnskogspols, a border dance from Sweden and Norway. Greenbelt Community Center Dance Studio (wood floor) at 15 Crescent Rd. \$7 **Info: 202.333.2826; inclement weather call 301.474.5525**



*Dances continued**Scottish*

Similar to English Country. For new and experienced dancers. No partner needed. Bring soft, flexible shoes. Recorded and live music.

**Scottish Country Dance • Bethesda, MD*****Mondays • 8-10 pm***

NIH Building T-39 (Dance and Aerobic Center). Call/email in advance for directions. **Info:** John MacLeod, 301.622.5945 or blackolav@cs.com and Betty Lee Barnes, 202.966.3595 or Thistledance@starpower.net

**Scottish Country Dance • Greenbelt, MD*****Tuesdays • 8-10 pm***

Dance all year round at the Greenbelt Community Center. **Info:** www.rscds.greaterdc.org or Bob Cameron at rbcthescot@yahoo.com or 202.321.7718

**Scottish Country Dance • Alexandria, VA*****Wednesdays • 8-9:45 pm***

Durant Center, 1605 Cameron St. **Info:** Carol Porter, 703.379.5779 or nova-secretary@rscds-greaterdc.org

*Squares***Hot Squares Dance Party • College Park, MD*****2<sup>nd</sup> and 5<sup>th</sup> Tuesdays • 8:30-11:00 pm***

Two (count 'em) dances this month! On October 9, the *Pillows of Society* fluff their way into your hearts. And on October 30, dress in your finest (or scariest) dance duds – your treat is two-thirds of *Crowfoot* (Jaige Trudel and Adam Broome). Join the *Hot Square Babes* (Laura Brown, Ann Fallon, Eva Murray, Janine Smith and Susan Taylor) for a rousing evening of square dancing at Cherry Hill RV Park Conference Center, 9800 Cherry Hill Rd. Beginners welcome, no partner required. \$8. Refreshments to share are welcome. **Info:** 410.268.0231 or 301.762.2231 or www.hotsquares.info

*Swing/Waltz/Ballroom***Sunday Afternoon Waltz • Glen Echo Park, MD*****Sunday, October 7 • 3-6 pm***

The fun begins with a 30-minute introductory waltz lesson at 3, followed by 2 ½ hours of social dancing – a lively mix of folk waltzes with Hambo, Schottische, swing, tango, and polka. \$8. **Info:** www.WaltzTimeDances.org or 301.634.2222. Spanish Ballroom at Glen Echo Park, featuring *Rhapsody Dance Band*.

**Ballroom Tea Dance • Glen Echo Park, MD*****Sunday, October 14 • 3-6 pm***

Dance lesson in the Spanish Ballroom with Marc Shepanek and Ellen Engle at 3 pm, followed by dancing to the music of the *LaSalle Dance Orchestra* playing a little swing, a little waltz, some foxtrot and tango – there's a rhythm here for everyone!! \$8. **Info:** dance@flyingfeet.org or 301.299.8728

**Argentine Tango Milonga • Glen Echo Park, MD*****Sunday, October 14 • 7-11 pm***

Dance lesson in the Spanish Ballroom with Anne-Sophie and Pablo at 7 pm, and then dancing to DJ Yulia Kriskovets. \$15 or volunteer for an hour to get in free. (Email volunteers@flyingfeet.org to get on the volunteer schedule.) **Info:** www.flyingfeet.org or dance@flyingfeet.org or 301.299.8728

**Sunday Afternoon Waltz • Glen Echo Park, MD*****Sunday, October 21 • 3-6 pm***

The fun begins with a 30-minute introductory waltz lesson at 3, followed by 2 ½ hours of social dancing – a lively mix of folk waltzes with Hambo, Schottische, swing, tango, and polka. \$8. **Info:** www.WaltzTimeDances.org or 301.634.2222. Spanish Ballroom at Glen Echo Park, featuring *Blue Bamboo*.

**Sunday Slow Blues Dance • Glen Echo Park, MD*****Sunday, October 21 • 7-11:30 pm***

The dance begins at 7 with an optional 90 minute workshop taught by Donna Barker and Mike Marcotte. Then at 8:30 the band will play slow blues and swing. Spanish Ballroom. \$17 for the workshop and dance; or \$12 for the dance only. **Info:** Donna Barker, 301.634.2231 or Glen Echo Park at 301.634.2222, or www.DanceDC.com.

**Washington Swing Dance • Glen Echo Park, MD*****Saturday, October 6 • 8-midnight***

*Girls from Mars.* No partner or dance experience necessary. All ages welcome. Introductory lesson from 8-9 pm in the Spanish Ballroom at Glen Echo Park. Admission \$12. **Info:** 301.340.9732 or wsdcswings@yahoo.com or www.wsdc.org



## Dance Classes

### Ballroom

#### Intermediate Waltz I • Glen Echo Park, MD

**Thursdays • 7-8 pm**

Spanish Ballroom. Four-week series, Oct. 4-25. \$40, pay at the door or visit [www.glenechopark.org](http://www.glenechopark.org) to pre-register. Instructors Donna Barker and Mike Marcotte teach folk waltz. Class is for waltzers who know the basic rhythm. No partner required. **Info at [www.dancedc.com](http://www.dancedc.com)**

#### Intermediate Swing • Glen Echo Park, MD

**Thursdays • 8-9 pm**

Spanish Ballroom. Four-week series, Oct. 4-25. \$40, pay at the door or visit [www.glenechopark.org](http://www.glenechopark.org) to pre-register. Add to your 6-count tuck-turns with 8-count figures, Charleston accents. No partner required. **Info at [www.dancedc.com](http://www.dancedc.com)**

#### Argentine Tango Fundamentals • Glen Echo Park, MD

**Thursdays • 9-10 pm**

Spanish Ballroom. Four-week series, Oct. 4-25. \$40, pay at the door or visit [www.glenechopark.org](http://www.glenechopark.org) to pre-register. Basic technique and styling, beginning with basic tango concepts and moving on to ochos, pasadas, and more. No partner required. **Info at [www.dancedc.com](http://www.dancedc.com)**

### Irish/Ceili

#### Irish Ceili and Set Dancing - Gaithersburg, MD

**Tuesdays • 7-9:30 pm**

The Ring of Kerry Dancers (a non-profit club) conducts Irish ceili and set dance instruction from September 4 thru early December. Beginners 7-8, Advanced 8:15-

9:30, at Ridgeview Middle School, 16600 Rock Raven Dr. Adults and children 8 and up are welcome. \$35 per semester. **Info: Marilyn O'Brien 301.926.6943**

#### Irish Set and Ceili Dancing • Rockville, MD

**Thursdays • 7-9:30 pm**

Basics from 7-8, Regular from 8-9:30 at Frost Center, 4915 Aspen Hill Rd, Rockville, September 6 to December 6, 2007. \$30 donation to Frost Center School. Sponsored by Greater Washington Ceili Club (non-profit). **Info: Paul O'Donnell 301.649.6410.**

### Scandinavian

#### Scandinavian Dance Classes • Bethesda, MD

**Beginning Class: Thursday Oct 18 & Tuesday Oct 30**

**• 7:30-9:30 pm**

**Advanced Class: Tuesdays Oct 2 & 9 • 7:30-9:30 pm**

Beginners learn Hambo, Schottish, Waltz, Zwiefacher, and other couple turning dances. Advanced dancers learn dances from Boda, Orsa, Rättvick, Ragujnda, and requests. Singles, couples, beginners, and advanced dancers welcome. Sometimes live Swedish fiddle music. Wear smooth-soled shoes for turning, not running shoes. \$5. **Info: Lisa Brooks at 240.731.1935, [lisa@HamboDC.org](mailto:lisa@HamboDC.org), or [www.HamboDC.org](http://www.HamboDC.org).**

**Directions:** Enter NIH at Wisconsin Av. and South Dr. for vehicle inspection (have ID ready). Go to the south center of NIH and park in NIH permit parking next to dancing in Building T-39, just northwest of building 41. Or walk 12 minutes from the Medical Center metro stop (also need ID). See a map (essential) at [www.HamboDC.org](http://www.HamboDC.org) or on a flyer.



## Jams/Open Mics/Audience Participation

— Listed by day of the week (Sunday thru Saturday) —

### Sundays

#### Scottish Traditional Music Jam • Wheaton, MD

**1st Sundays • 3-6 pm**

Scottish traditional music jam, first Sundays, Royal Mile Pub, 2407 Price Avenue. Musicians welcome. **Info: <http://dcscottishsession.blogspot.com/> or contact Peter Walker at [boghadubh@gmail.com](mailto:boghadubh@gmail.com).**

#### Black Book Singers of DC • Washington, DC

**1st Sundays • 7 pm**

Black Book Singers of DC invite all voices to sing sacred and secular music of the Renaissance. Some sight reading skills needed. Recreational sing monthly on the first Sunday eve near Van Ness Metro. **Info: [jgildemeister@cs.com](mailto:jgildemeister@cs.com).**

#### CABOMA Jam • Arlington, VA

**2nd and 4th Sundays • 2 pm**

Capitol Area Bluegrass and Old-Time Music Association (CABOMA) holds jams the 2nd and 4th Sundays of each month. Lyon Park Community Center, corner of N. Filmore and Pershing. **Info: Dave at 301.274.3441.**

#### Annapolis Acoustic Jam • Annapolis, MD

**Sundays • 9 am-Noon**

Indoors at The Visitor Center, Quiet Waters Park. **Info: [phyllis@saroffillustration.com](mailto:phyllis@saroffillustration.com).**

#### Bluegrass Jam • Reston, VA

**5th Sundays • 1-4 pm**

Open acoustic bluegrass jam held any month having a 5th Sunday. Bring an instrument, sing along or listen – all are welcome. At Reston Used Book Shop, Lake Anne, 1623 Washington Plaza. **Info: 703.435.9772.**



*Jams/Open Mics/Audience Participation continued*

**Mondays**

Monthly Children's Irish Music Jam Session • Accokeek, MD  
**2<sup>nd</sup> Mondays • 6:30-8 pm**

Come out to National Colonial Farm and join the fun! We will meet at the Farm's Education Center. Look for signs. National Colonial Farm is located at 3400 Bryan Point Road in Accokeek, MD. **Info: 301.283.0167 or p.addamiano-carts@att.net.**

DC Bluegrass Union VFW Bluegrass Jams  
 • Takoma Park, MD

**2<sup>nd</sup> & 4<sup>th</sup> Mondays • 7-10 pm**

Free. At Veterans of Foreign Wars Post 350, 6420 Orchard Ave. (corner of 4<sup>th</sup> Ave). **Info: VFW Post 350 at 301.270.8008 or Barb Diederich barb@alum.mit.edu.**

Balkan Singing • Takoma Park, MD

**Every Monday • 8 pm**

Informal singing group meets Takoma Park (sometimes in DC) to sing Balkan village songs. Interested novices welcome. **Info: Katya@partan.com or Joan at 202.363.6197.**

**Tuesday**

Monthly Children's Irish Music Session • Silver Spring, MD  
**1<sup>st</sup> Tuesdays • 6:30-7:45 pm**

Children's Irish Music Session run by Karen Ashbrook with Paul Oorts precedes a weekly adult session at 8 pm led by Dennis Botzer. Children are welcome to stay and play if they know the tunes. McGinty's Pub, 2<sup>nd</sup> floor, 911 Ellsworth Dr, 301.587.1270. **Info/music booklet: karenashbrook.com.**

Sea Chantey Open Pub Sing • Wheaton, MD & Falls Church, VA

**1<sup>st</sup> and 4<sup>th</sup> Tuesdays • See below for start times**

**The Ship's Company** chanteymen host open mike sea chantey sings. No cover/minimum; arrive early for a table. Participation encouraged but not mandatory. Requests are honored if possible. Mostly a capella but instruments are welcome. **Info: Myron Peterson at ructic@yahoo.com or www.shipscompany.org.**

**1<sup>st</sup> Tuesdays – At Royal Mile Pub,**

**2407 Price Avenue, Wheaton. 8 pm**

**4<sup>th</sup> Tuesdays – At Stacy's Coffee Parlor,**

**709 W. Broad Street, Falls Church. 7 pm**

Folk Club of Reston/Herndon • Herndon, VA

**2<sup>nd</sup> Tuesdays • 7:30 pm**

At the Tortilla Factory, 648 Elden Street. Open mic format. 2<sup>nd</sup> Tuesday includes a 25-minute member showcase. Smoke-free environment. **Info: www.restonherndonfolkclub.com, 703.689.0444.**

**Wednesdays**

Laurel Jam Session • Laurel, MD

**2<sup>nd</sup> and 4<sup>th</sup> Wednesdays • 7-10 pm**

Adults who enjoy acoustic music are invited to come and sing, play, or listen to folk, bluegrass, and other traditional music in an informal setting. Phelps Senior Center, 701 Montgomery Street. **Info: 301.776.6168 during business hours.**

Women's A Cappella Chorus • Brooklyn Park, MD

**Wednesdays • 7-10 pm**

**The Harbor City Music Company**, a women's a cappella chorus, seeks motivated singers in all voice parts. Rehearsals at Chesapeake Center, 194 Hammonds Lane. **800.856.9868, hcmcsueg@comcast.net or www.harborcitymusiccompany.org.**

Sea Chantey Open Pub Sings

• Baltimore, Annapolis, Charlestown, MD

**2<sup>nd</sup>, 3<sup>rd</sup> & 4<sup>th</sup> Wednesdays • 8 pm**

**The Ship's Company** chanteymen host open mike sea chantey sings. Participation encouraged but not mandatory. Requests are honored if possible. **Info: Myron Peterson at ructic@yahoo.com or www.shipscompany.org**

**2<sup>nd</sup> Wednesdays – Wharf Rat, 801 S. Anne St., Baltimore (Fells Point)**

**3<sup>rd</sup> Wednesdays – Galway Bay, 63 Maryland Ave, Annapolis 21401**

**4<sup>th</sup> Wednesdays – Wellwood Inn and River-shack, 523 Water St., Charlestown 21914**

Arlington Jam! • Arlington, VA

**3<sup>rd</sup> Wednesdays • 7-10:30 pm**

Fiddles, guitars, all instruments welcome! Intermediate and advanced players interested in old-time, blues, Scandinavian, swing, and other styles. First Friday and third Wednesday at 1909 N. Ohio Street, Arlington, VA. **Info: Lilli Vincenz, 703.532.2731 or FiddlerLilli@zzapp.org.**

Cajun Jam • Silver Spring, MD

**4<sup>th</sup> Wednesdays • 7:30-10:30 pm**

For dancers, musicians, and listeners who enjoy Cajun music. Los Arrieros, 7926 Georgia Ave. Park in rear lot off Blair Rd. and on Georgia Ave. Beginners welcome. **Info: swopes123@aol.com.**

**Thursdays**

American Balalaika Symphony, Open Rehearsals  
 • Alexandria, VA

**Thursdays • 8 pm**

Fiddle, mandolin, and guitar experience translates easily to the balalaika and domra. Enthusiastic beginners welcome! Come play Russian and East European folk and classical music. Most Thursdays at Hermitage,

## *Jams/Open Mics/Audience Participation continued*

5000 Fairbanks Avenue. Info: [www.balalaika.biz](http://www.balalaika.biz) or 703.248.8199.

**Irish Traditional/Bluegrass Music Sessions**  
• Frederick, MD

*Thursdays • 7 and 8:30 pm*

At Boe's Strings, 26 S. Market Street. Info and tune list at [www.BoesStrings.com](http://www.BoesStrings.com) or Boe at 301.662.0750.

**Songwriters Open Mic • Greenbelt, MD**

*4<sup>th</sup> Thursdays • 7-9 pm*

New Deal Café, 113 Centerway/Roosevelt Center. Originals encouraged. Signups at 6:30 pm. Hosted by the Songwriters' Association of Washington. Info: 301.474.5642 or [www.saw.org](http://www.saw.org).

### **Fridays**

**Songwriters Open Mic • Olney, MD**

*1<sup>st</sup> & 3<sup>rd</sup> Fridays • 7:30-10 pm*

Caribou Coffee, 18101 Olney Village Mart Drive. Originals only. Signups at 7 pm. Hosted by the Songwriters' Association of Washington. Info: contact SAW at 301.654.8434, [www.saw.org](http://www.saw.org), or Caribou Coffee at 301.570.0909.

**Arlington Jam! • Arlington, VA**

*1<sup>st</sup> Fridays • 7-10:30 pm*

See Wednesday listing.

**Glen Echo Open Band • Glen Echo, MD**

*Friday, October 12 • 8:30-11:30 pm*

The fabulous Glen Echo Open Band plays for the second Friday contra dance. All instruments and levels of ability are welcome. Find recordings, tune-book names and page numbers of tunes played by the Open Band at [www.openbandonline.com](http://www.openbandonline.com). The site works best using iTunes on a PC or a Mac. Info: [www.fridaynightdance.org](http://www.fridaynightdance.org).

**Open Mic at Potter's House • Washington, DC**

*4<sup>th</sup> Fridays • 8 pm*

Both spoken word and music. Homemade dinner/desserts served starting at 7. Potter's House 1658 Columbia Road NW (Green line to Columbia Hgts). Suggested donation \$10. Info: [www.PottersHouseDC.org](http://www.PottersHouseDC.org).

### **Saturdays**

**Archie Edwards Blues Jam • Washington, DC**

*Saturdays • 2 pm*

The Archie Edwards Blues Heritage Foundation holds an acoustic blues jam almost every Saturday afternoon. All skill levels welcome. 2007 Bunkerhill Road, NE. Info/confirmation: 202.526.7539 or [www.acousticblues.com](http://www.acousticblues.com).

**Batala Percussion Band • Washington, DC**

*Saturdays • 10am - 1 pm*

Newly-formed all-woman ensemble plays Brazilian samba-reggae rhythm. Instruments provided by the band. No prior knowledge of music or percussion is necessary, only interest and willingness to learn. Practices will be in locations convenient to public transportation. Info: Mariana Pereira, Musical Director 202.361.8993, or [drums@batalawashington.com](mailto:drums@batalawashington.com), or [www.batalawashington.com](http://www.batalawashington.com).

**Folk Music Sing Along/Jam • Arlington, VA**

*1<sup>st</sup> and 3<sup>rd</sup> Saturdays • 2 pm*

Indoors in Crystal City. All voices, instruments welcome. Visit the website for details: <http://folk.meetup.com/45>. More info: [liverpoolwalrus@yahoo.com](mailto:liverpoolwalrus@yahoo.com).

**Songwriters Open Mic • Springfield, VA**

*2<sup>nd</sup> Saturdays • 7:30-10:45 pm*

Kings Park Community Room (next to Cricket Box gift shop), Kings Park Shopping Center, intersection of Braddock, Rolling and Burke Lake Rds. Originals encouraged. Signups at 6:30 pm. Hosted by the Songwriters' Association of Washington. Info: Jim Johnson at 703.913.7408, [jimjohnson@verizon.net](mailto:jimjohnson@verizon.net) or [www.saw.org](http://www.saw.org).

**Hammer Dulcimer Jam • McLean, VA**

*Saturday, October 27 • 1:30 - 4:30 pm*

Hammer dulcimer players meet monthly at the Dolley Madison Library to swap tunes and play together. Other acoustic instruments welcome. Info: Heli at 703.689.3477, [heliel@earthlink.net](mailto:heliel@earthlink.net), or <http://pages.prodigy.net/holsopple>.

**Songwriter Exchange • Vienna, VA**

*4<sup>th</sup> Saturdays • 10 am-12:30 pm*

Bring your original song or portion of a song to share for friendly peer feedback. A song is not required to participate. At Jammin' Java, 227 Maple Ave. East ([www.jamminjava.com](http://www.jamminjava.com)). Info/directions: Paige Powell 703.671.4131, [www.saw.org](http://www.saw.org).



## Storytelling

### Haunting Tales \* Falls Church, VA

**Saturday, October 27 \* 8 pm**

**Voices in the Glen** presents ghostly stories for adults (and children who can listen like adults) at Tysons-Pimmit Regional Library, 7584 Leesburg Pike. Free. Rated PG-12. Storytellers **Margaret Chatham, Penelope Fleming, Miriam Nadel, and Merrilee Pallansch** present tales to put you in the Halloween mood. Info: 703.698.5456. Parking in the staff lot will be permitted.

### 12<sup>th</sup> Annual Tellabration! \* Towson, MD

**Saturday, November 17 \* time TBA**

BFMS will present 12 of the Baltimore area's finest storytellers, with family storytelling in the early evening, followed by stories for adults only. Woodbrook Baptist Church. Info: Diane at 410.321.8419 or matchmaker2@comcast.net

## Workshops, Weekends, Festivals & Special Events

### Mandolin Workshop • Cheverly, MD

**Saturday, October 6 • noon-2 pm**

**Orrin Star** leads a workshop showing how to take a simple melody and turn it into a mandolin lead. Limited to 12 participants, experienced beginner through intermediate level players. \$40 includes written hand-out. Info: <http://orrinstar.com/Pages/MandoShops.html> or [orhay@aol.com](mailto:orhay@aol.com) or 301.773.6149.

### Traveling Banjo Academy • Silver Spring, MD

**Saturday - Sunday • October 13-14**

Banjo workshops with **Bob Carlin, Dan Levenson** and **Cathy Fink**. Silver Spring Unitarian Universalist Church, 10309 New Hampshire Ave. 9:30 am- 4 pm. \$195 for 3 classes plus bonus "Banjo Brain Trust" roundtable discussion, or \$50/class. Detailed information at [www.imtfolk.org](http://www.imtfolk.org).

### Baltimore Playford Ball • Baltimore, MD

**Saturday, October 13 • Times TBA**

Sign up now for the BFMS Playford Ball, Church of the Redeemer, 5603 N Charles at Melrose. Music by **Winds of Tyme**. List of dances and registration form online at [www.bfms.org](http://www.bfms.org) Details concerning afternoon rehearsal not available as of publication date. Info: Carl at 410.321.8419.

### Balktoberfest • Silver Spring, MD

**Saturday, October 13 • 6 pm-2am**

The World Music Folklife Center and **The Balkanics** present a celebration of the rich music and dance traditions of Southeastern Europe (and a few other places!). Hollywood Ballroom, 2126 Industrial Parkway. Maple dance floor, 2 stages, 13+ bands representing various Balkan cultures, food vendors, Balkan Bazaar. All proceeds to Balkan charities. \$28 adults/\$20 students and seniors/ \$10 6-18. To get your band on the schedule: [info@balktoberfest.com](mailto:info@balktoberfest.com) Additional info: [www.wmfolklifecenter.org](http://www.wmfolklifecenter.org)

### Myersville Trolley Festival • Myersville, MD

**Saturday-Sunday, October 21-22**

Includes a bluegrass solo contest, with cash prizes. Registration limited to first 20 applicants, deadline Oct. 10. Info: [nick@nickcarras.com](mailto:nick@nickcarras.com) or 301.473.8800

### Blues Piano Workshop • Washington, DC

**Saturday, October 27 • 10:30 am - 12:30 pm**

"How to Play Blues Piano" Part II, taught by **Judy Luis-Watson**, Blues Works piano player. Left-hand bass patterns, right-hand tricks, basic building blocks, and more. Bring a keyboard, stand, and headphones. \$45/person. Pre-registration by October 15 required. 2007 Bunkerhill Road, NE. To pre-register, email: [jluisw@aol.com](mailto:jluisw@aol.com) Info: [www.acousticblues.com](http://www.acousticblues.com) or [www.bluesworksband.biz](http://www.bluesworksband.biz)

### Callers' Collective Workshop • Cherry Hill, MD

**Thursdays, beginning November 8 • 7-9:30 pm**

A series of workshops designed for both new and experienced callers. **Ann Fallon, Eva Murray** and **Laura Brown**, with special appearances by other local and national talent. Info: **Ann Fallon** at 410.268.0231 or [afallon@riva](mailto:afallon@riva) to register and for additional details.

### Eisteddfod-NY • Jackson Heights, Queens, NY

**Friday-Sunday, November 16-18**

Family-friendly gathering of musicians and singers, with lots of audience participation. Concerts, workshops, ballad swap, open stage, Festival Marketplace, and much more. At Renaissance Charter School, 35-59 81<sup>st</sup> St. Info: [www.eisteddfod-ny.org](http://www.eisteddfod-ny.org) or 718.965.4074

### Upper Potomac Celtic Fiddle & Feet Weekend

• Harpers Ferry, WV

**Friday-Sunday, November 16-18**

Workshops, classes, concert, a ceili dance and sessions for players of all instruments in Scottish, Irish and French Canadian traditions in a relaxed retreat setting at the Historic Hilltop House Hotel in Harpers



## Workshops, Weekends, Festivals & Special Events continued

Ferry. Faculty features French Canadian band **Genticorum**, Scottish fiddler **Laura Risk**, Irish fiddle with **Cleek Shrey**, **Robin Bullock** on guitar, mandolin and tenor banjo, **Ken Kolodner** on hammered dulcimer and **Kieran Jordan** teaching step dance. Info: [www.celticfiddle.info](http://www.celticfiddle.info) or Joanie Blanton 304.263.2531 or email [updf@earthlink.net](mailto:updf@earthlink.net)

### FSGW Vocal Workshop • Laurel, MD November 2007 - March 2008 • 1-2 pm

A series of five classes (11/17, 12/15, 1/19, 2/16, 3/8), limited to 12 students. This intimate class size will give all attendees the chance to get the most from their voices while protecting their vocal instrument from harm. Tutorial and student participation, led by Charles Williams, singer and vocal coach (a regular at Augusta Heritage Center Vocal Week). Classes are non-cumulative; you may sign up for one, all, or any combination. \$80 for the series, \$20 for each class; priority to those registering for the series. Info: Dennis at 301.776.4314 or [Dennis@DennisCook.net](mailto:Dennis@DennisCook.net)

### Terpsichore's Holiday • Roanoke, WV December 27, 2007-January 1, 2008

Five magic days and nights of dancing, singing, live music, meals and 4-star accommodations at Stonewall Jackson Lake State Park! Programs for adults, teens and children – contras and squares, waltz, English country, Morris, couple dances, dance band, longsword, arts and crafts, singing, storytelling, juggling, nature walks,

swimming, community dances, and nightly contra dances. Featuring **The Groovemongers**, **The Avant Gardeners**, **Gaye Fifer**, **Bill Wellington** and more. Info: **Jeff Kenton**, camp director, at 301.587.1525, [jkenton@verizon.net](mailto:jkenton@verizon.net). Details: [www.danceholiday.net](http://www.danceholiday.net).

### FSGW Midwinter Festival • Takoma Park, MD Saturday, February 2, 2008 • noon-10:30 pm

Mark your calendar now. The 2008 edition of the FSGW Midwinter Festival (aka Mini-Fest) will take place on Groundhog Day.

### Folksong Tour of Scotland

June 14-25, 2008

11 days with Scottish singer/folklorist Ed Miller. Info: [edmiller@songsofscotland.com](mailto:edmiller@songsofscotland.com).



## Supporting WAMU? Do it through FSGW!

WAMU-FM hosts many fine folk programs, and it recently added Mary Cliff's *Traditions* and *A Prairie Home Companion* after WETA's format change.

If you'd like to support WAMU, why not do it through FSGW and support both institutions for no additional money on your part? If you channel your donations to WAMU through FSGW, we will bundle all of your contributions and use them to underwrite various folk programming on WAMU such as "Traditions." By giving collectively, we can heighten awareness of FSGW and publicize its events in a short blurb at the beginning of each underwritten program. The collective power of our giving also ensures that WAMU is aware of the substantial folk audience for its programming, and will look favorably on this type of music in its line-up.

Every dollar collected by FSGW for WAMU will be passed along to the radio station. Not only won't we take a cut, we plan to augment your donations with FSGW funds. Since FSGW is a 501(c)(3) organization, you can still take advantage of charitable tax deductions.

To donate to WAMU through FSGW, just write a check to FSGW and note that it is for the WAMU Fund. Send it to the FSGW Treasurer, Leslie Barkley, PO Box 1238, Frederick, MD 21702. We'll pass along your contribution to WAMU, and you can hear the results when you hear FSGW mentioned on the air as a sponsor.

We'll be in touch about putting together volunteer crews during WAMU's fundraising efforts—you'll be able to volunteer on the same shifts with your fellow folk friends.

So give to WAMU through FSGW and help support both organizations—a double bang for your buck!

## FSGW Board 2007-2008

Charlie Baum, *president*  
 David Shewmaker, *vice president*  
 Leslie Barkley, *treasurer*  
 Jane Ziki, *secretary*  
 Julia Friend, *program*  
 Marty Summerour, *special events*  
 Robert Cox, *dance*  
 Jerry Stein, *membership*  
 April Blum, *publications*  
 Colleen Reed, *publicity*  
 Jim Cole, *past president*

president@fsgw.org  
 vicepresident@fsgw.org  
 treasurer@fsgw.org  
 secretary@fsgw.org  
 program@fsgw.org  
 special@fsgw.org  
 dance@fsgw.org  
 members@fsgw.org  
 newsletter@fsgw.org  
 publicity@fsgw.org  
 pastpresident@fsgw.org

301-587-2286  
 202-518-1299  
 301-696-8333  
 703-271-5326  
 917-685-9243  
 703-354-6460  
 301-530-2767  
 703-671-6181  
 703-978-2774  
 301-770-7963  
 703-356-9678

### Members-at-Large

Linda Goodman  
 Laura Parsons

board1@fsgw.org  
 board2@fsgw.org

301-656-1627  
 703-845-8536

### Washington Folk Festival Coordinating Committee

Sousan Frankeberger  
 Dwain Winters

703-803-3272  
 301-657-2789

## FSGW Board Meetings

*Tuesday, October 2 - 8 PM*

The monthly FSGW board meeting will be held in Classroom 201 at Glen Echo Park, MD. All FSGW members may attend. If you wish the Board to consider a particular matter, please contact the appropriate board member or **Charlie Baum, FSGW president at 301-587-2286** in advance of the meeting.



## C L A S S I F I E D S

**Editorial Policy for Classified Ads:** Only FSGW members may place an ad. Ads may be up to 50 words, including telephone number with area code. There is a limit of two ads per member per issue. Ads **MUST** be relevant to FSGW's stated purpose (see Editorial policy on page 14). Charges: Commercial business: \$8 for 10 words; Non-commercial and individual \$4 for 10 words; 25% discount for any single ad placed in 11 consecutive issues (one year) and paid in advance. LOTST & FOUND ads are FREE. Ad copy, with check made payable to FSGW must be received by the newsletter deadline. **Mail to the Editor: April Blum, 4520 Fidellity Ct., Annandale, VA 22003-4525.**

**OASIS©CD MANUFACTURING.** Personal service, great quality. Radio promotion nationwide on OasisAcoustic™ or 10 other samplers! **888-296-2747, [www.oasisCD.com](http://www.oasisCD.com), or [info@oasisCD.com](mailto:info@oasisCD.com).**

**GET SOUND?** Live sound reinforcement with or without sound engineer. Voted best live sound engineer by WAMMIE for 2005. Reasonable, personable, no bull. **David Eisner, 301-793-7878.**

**HOUSE OF MUSICAL TRADITIONS** would like to turn those unplayed folk instruments into cash for you. Check out our Ebay store and auctions at [www.musicaltraditions.com](http://www.musicaltraditions.com). Cash, trade, consign. Call **301-270-9090** or visit us in Takoma Park. Open 7 days/week at the crack of 11!

**GUITAR LESSONS-BEGINNER/ADVANCED,** Bethesda/Chevy Chase area. Enjoy learning with patient, experienced, professional teacher; formerly with the Eva Cassidy Band. **Keith Grimes 301-654-1163.**

**SLAVEYA,** Washington area women's Balkan vocal ensemble directed by internationally-acclaimed vocalist Tatiana Sarbinska, is seeking singers. To schedule an audition, call 202-707-4834 or send email to [slaveya@slaveya.org](mailto:slaveya@slaveya.org). For more information, visit [www.slaveya.org](http://www.slaveya.org).



# FSGW Getaway No. 43

Vol. 44 No. 2 October 2007

## November 2-5, 2007 • West River, MD • Registration Form

Name \_\_\_\_\_ Home Phone \_\_\_\_\_

Address \_\_\_\_\_ Work Phone \_\_\_\_\_

City \_\_\_\_\_ State \_\_\_\_\_ Zip \_\_\_\_\_ E-mail address: \_\_\_\_\_

☐ Please confirm receipt of my registration by sending a message to the e-mail address above.

Please DO NOT list ☐ my name ☐ address ☐ phone or ☐ e-mail in Getaway Attendees Directory.

Name of each registrant [including yourself] (as you would like it on your badge)	Student or Age [if child]	Nights Lodging			Meals you plan to eat												FSGW Member	I want to room with/Room options (same gender; music at night; quiet lodge; children; using own RV)	Require Lower Bunk?	Cost* (see below)
		Fr	Sa	Su	Fr	Sa	Sa	Sa	Su	Su	Su	Mo	Br							
1.															Yes	No		\$		
2.															Yes	No		\$		
3.															Yes	No		\$		
4.															Yes	No		\$		
5.															Yes	No		\$		

Payment for overnight Getaway attendees may be done in installments. Deposits of \$30.00 per adult and \$15.00 per child required to reserve space. The balance is due by **October 15, 2007**. After that date space will not be guaranteed. We're sorry, but we cannot give refunds for any cancellations received after **Sunday, October 21nd unless someone else takes your space**. There is a \$10.00 processing fee per person for all cancellations. Payers in non-U.S. currency may contact Dick Greenhaus at Camsco Music (dick@camsco.com) for payment options.

**Total Due: \*** \$ \_\_\_\_\_

**Scholarship Donation:** \$ \_\_\_\_\_

**Amount Enclosed:** \$ \_\_\_\_\_

**Amount due by October 15:** \$ \_\_\_\_\_

Vegetarian? Restricted diet? Any allergies we should know about?: \_\_\_\_\_

Please list ALL who will attend, INCLUDING YOURSELF, select housing preference and compute the cost. List additional names on a separate piece of paper.  
Housing choices: Your tent, camper or RV (but there's no discount for that—only guaranteed privacy). ALL ROOMS HAVE 4 BEDS with upper and lower bunks. If you wish to share with specific people, we can put 4 of you in a room. (There is ONE 6-room.) Privacy at the camp is hard to come by; there are only 50 rooms.  
Rooming options you may specify: • Lodge with music ALL night (not guaranteed, unless we get an entire cabin of willing musicmakers), • Lodge with no music at night; • Lodge that's always quiet (no music any time). • Room only with other men. • Room only with other women. (All lodges have separate men's and women's bathrooms.) • Prefer with other children. • Prefer no children. • REQUIRE a lower bunk, • PREFER a lower bunk, and • DON'T CARE either way about lower bunk. • Wheelchair/handicapped accessibility. Let us know if there's anyone (or any group) you'd like to room with, and if you have any special physical needs. Lower bunks are at a premium, so we're giving a discount for volunteers for upper bunks.

	<b>*Costs:</b>		
	<b>"3 nights and 2 days"</b> (Fri. eve 'til Mon. breakfast)	<b>"2 nights and 2 days"</b> (Fri. eve to Sun. night)	<b>"One day and a night"</b> (Either Sat. or Sun. with 1 night)
<b>Members**</b>			
Adults 18 and older:	\$161.00 (\$155.00 upper bunk vol.)	\$141.00 (\$135.00 upper bunk vol.)	\$83.50 (\$77.50 upper bunk vol.)
Students over 18	\$124.00	\$99.00	\$59.50
Children 13 through 17:	\$98.00	\$76.00	\$48.00
Children 4 through 12:	\$69.00	\$54.00	\$37.00
Children 3 and younger:	free	free	free
<b>Non-members:</b>			
Adults 18 and older:	\$181.00 (\$175.00 upper bunk)	\$161.00 (\$155.00 upper bunk)	\$92.50 (\$87.50 upper bunk)
Children under 17 and full-time students, same rates as members (see above)			

Upper bunk volunteer: adults only can take a discount of \$6 each.  
Daytrippers who aren't going to eat with us at the center need not register in advance.  
Day rate (per day) without meals: Members: \$35 adults 18 and older; \$20, ages 13-17; \$5 ages 4-12; 3 and under free.  
Nonmembers: \$40 adults 18 and older; \$25 ages 13-17; \$10 ages 4-12; 3 and under free.  
\*\*Current full members of FSGW. If you are not yet a member, you may join the Society now and get member rates.  
Overnighting adult members of the Baltimore Folk Music Society or Reston-Herndon Folk Club may deduct \$6/day from non-member rates.

\*Thanks to the Linda Lieberman/David Olive Memorial Fund, scholarship help is available for those who need it. If you need full assistance, or a break on the price, contact Charlie Baum (see phone and e-mail below) before you send in the registration, and the scholarship committee will consider your request. Contributions to replenish the fund are always welcomed and are tax-deductible! We hold a silent auction at the Getaway to help replenish the fund—you may wish to donate items to auction off to help others who can't afford the whole cost of the weekend.

Children 8 and younger must be accompanied by at least an equal number of adults who are responsible for their care and supervision throughout the event. There is a maximum of 3 children under 12 per adult.

☐ I can help set up on Friday (3-6 pm). ☐ I can help clean up Friday night's pot-luck. ☐ I can help clean up on Monday (9 am-noon).

☐ I can help with registration of guests at the camp. ☐ I am interested in a scholarship.

Mail with payment to our registrar:

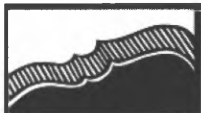
**FSGW Getaway c/o Dean Clamons, P.O. Box 217 / Clifton, VA 22024-0217 / USA / 703-631-9655 (dclamons@cox.net)**

We look forward to seeing you at the Getaway.

If you have any questions, contact Charlie Baum at 301-587-2286 or cbaum@fsgw.org

If you find you cannot come, **please cancel your reservation.**

**FSGW Hotline: 202-546-2228 • www.fsgw.org/getaway.htm**



# Folklore Society of Greater Washington

PO Box 1238 • Frederick, MD 21702

[www.fsgw.org](http://www.fsgw.org)

Printed on recycled paper.

Address Service Requested

PRESORTED  
FIRST CLASS MAIL  
US POSTAGE PAID  
ROCKVILLE, MD  
PERMIT #4297

FIRST CLASS



\*\*\*\*\*AUTO\*\*3-DIGIT 201

1571

Carly Gewirz 2100/01

PO Box 217

Clifton VA 20124-0217

The Folklore Society of Greater Washington is a not-for-profit [Section 501(C)(3) of the IRS code] institution and we encourage the financial contributions of our members. Contributions in excess of annual dues are welcome and may be tax deductible. Please mail your gift to FSGW, c/o Leslie Barkley, PO Box 1238, Frederick, MD 21702. Subscriptions to the Newsletter are only available outside the Greater Washington Metro area.

FSGW IS DEDICATED TO PRESERVING AND  
PROMOTING TRADITIONAL FOLK ARTS IN THE  
WASHINGTON, DC METROPOLITAN AREA.  
MEMBERSHIP IS OPEN TO ALL WHO SUPPORT  
THESE GOALS UPON PAYMENT OF ANNUAL DUES.

## FSGW Membership Form

☐ RENEWAL ☐ NEW ADDRESS ☐ NEW MEMBERSHIP\*

	INDIVIDUAL	FAMILY
1 year	<input type="checkbox"/> \$31	<input type="checkbox"/> \$43
2 years	<input type="checkbox"/> \$57	<input type="checkbox"/> \$82
3 years	<input type="checkbox"/> \$84	<input type="checkbox"/> \$122
LIFE	<input type="checkbox"/> \$500	<input type="checkbox"/> \$750
Student	<input type="checkbox"/> \$22	

☐ Newsletter Subscription ONLY \$22

Available ONLY to those living OUTSIDE the Greater Washington Metro area.

Newsletter Subscription carries NO membership privileges.

\*If you are a new member, where did you get this newsletter?

- ☐ at Glen Echo Park (which event? \_\_\_\_\_)
- ☐ Another FSGW Event (which one? \_\_\_\_\_)
- ☐ From a friend who is a member
- ☐ At my public library ☐ Other \_\_\_\_\_

Name(s) \_\_\_\_\_

Address \_\_\_\_\_

City \_\_\_\_\_ State \_\_\_\_\_ Zip \_\_\_\_\_

Phone(s) \_\_\_\_\_

H: \_\_\_\_\_ W: \_\_\_\_\_

Email: \_\_\_\_\_

May we list you in our Membership Directory?

(FSGW does not provide mailing lists to any other organizations.)

☐ Yes ☐ No

☐ Yes, but do not list my:

☐ address ☐ home phone ☐ work phone ☐ email



Send form and check made payable to FSGW to:  
FSGW Membership • PO Box 1238 • Frederick, MD 21702