



The Folklore Society of Greater Washington  
**NEWSLETTER**



# Peggy Seeger

in Concert  
Saturday,  
March 6 • 8 PM

Peggy Seeger's family connections are well-known in folk and classical music circles. She is **Pete Seeger's** half-sister and the late **Mike Seeger's** sister, daughter of composer **Ruth Crawford Seeger** and ethnomusicologist **Charles Seeger**; partner to **Ewan MacColl** (who wrote *The First Time Ever I Saw Your Face* for her) and with whom she had three children. Her best-known compositions are *Gonna Be an Engineer* and *The Ballad of Springhill* (the latter frequently mistaken for a traditional song).

*continued on page 3*

## *Old-Fashioned Blues House Party*

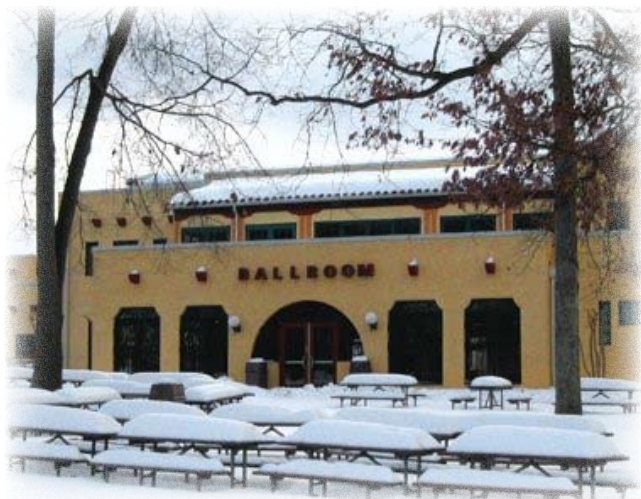
Saturday, March 13 \* 8 pm

# Andy Cohen, Eleanor Ellis, and "Wale" Liniger

*Full Details page 5*



*Roxanne Watts, editor*



# FSGW Sunday Night Dances

at Glen Echo Park, MD  
(Directions, page 23)

**Contras & Squares • 7:30-10:30 pm**  
**Introductory lesson every Sunday from 7-7:30 pm**

Join us for an evening of dancing at Glen Echo Park. Every Sunday FSGW (in cooperation with the National Park Service, Montgomery County, and the Glen Echo Park Partnership for Arts and Culture) presents contras and squares danced to live music by fabulous bands with entertaining callers. Experienced and new dancers welcome; no partner needed. **Welcome/Orientation session every Sunday at 7 pm. Come early for an introduction to the basic moves, and check out YouTube instructional videos as well (see below).** Dances often become more challenging as the evening progresses. Bring water or a sports drink, and dress appropriately in layers. Smooth soled shoes are kindest on your knees and ankles when turning. If you use scented products such as perfumes, note that some dancers have allergies – please apply it, if you must, with a light hand. Info: **Penelope Weinberger**, [dance@fsgw.org](mailto:dance@fsgw.org).

**Admission: \$9 for FSGW, BFMS, CDSS, and ATDS Members.  
\$12 for the general public**

**March**  
**7**



Contratopia

Midwestern magic comes east as the Iowans and Minnesotans descend upon Glen Echo. Don't miss local transplant **Ted Hodapp** calling to the amazingly fun and skilled band, **Contratopia**, featuring **Erik Sessions** (fiddle), **Patrice Pakiz** (piano, oboe, percussion), **Pat O'Loughlin** (English concertina and banjo), and **John Good** (mandolin and guitar)



Ted Hodapp

**14**

Eva Murray



Fine local talent! Our own **Eva Murray** calls the figures to **Taylor Among the Devils**, and that would be **Marty Taylor** with those two Devils, **Steve Hickman** and **Jonathan Jensen**.

Beth Molaro



**21**

Laura and the Lava Lamps



**FREE DANCE FOR MEMBERS**—Drag out those gogo boots and mini skirts! **Laura and the Lava Lamps** will have you groovin', and maybe even dancing in the streets! **Beth Molaro** calls the "revolutions"; **Laura Lengnick** plays fiddle, **Dave Wiesler** is on piano, and **Ralph Gordon** adds the bass note. Power to the Contra! Nominations from the floor for the 2010-2011 FSGW Board will be taken during a brief membership meeting at the break.

**28**

As sweet as maple sugar, caller **Rebecca Lay**, on her tour from Vermont, teams up with Baltimore's own **Mortal Wombat**, comprised of **Carl Friedman** on fiddle, **Robin Wilson** on flute and concertina, **Ralph Barthine** on guitar, and **Michael Friedman** on piano.



Rebecca Lay

## On the Web:

<http://www.youtube.com/watch?v=N1o7tdtHZyE&feature=related> "Contra Dance Training."

[http://www.youtube.com/watch?v=PrcKrr\\_SusY&feature=related](http://www.youtube.com/watch?v=PrcKrr_SusY&feature=related) "Hidden Secrets of the Contra Elite."

Have you come across an article about dance you'd like to share? Or would you like to write one? Please send your suggestions to [Newsletter@fsgw.org](mailto:Newsletter@fsgw.org)

# Peggy Seeger *continued from front page: March 6*



From 1959, **Peggy Seeger and Ewan MacColl** spearheaded the British folk revival, rediscovered old songs of the USA & UK, and gathered performers around them for political-musical documentary theatre, including the BBC Radio Ballad series. Their partnership ended with his death in 1989.

Peggy is known for singing both traditional songs and composed ones, mostly her own and many of a political nature. Peggy knows history. She hitchhiked Europe in the 1950s and was one of the first North American civilians to visit the People's Republic of China after the revolution. Peggy has dined with **Woody Guthrie, Leadbelly, Mao Tse-Tung, Chou en Lai**, and accompanied **Paul Robeson** on one of his British tours. The stories she can tell!

Peggy plays banjo, guitar, Appalachian dulcimer, autoharp, English concertina and piano. She is songmaker, author, music editor, activist, world traveler, has made 22 solo recordings and been part of more than 100 others, and is one of North America's finest female folksingers. She is currently recording another CD, and after this tour, is planning to re-settle in the UK. So catch her in concert while you can.

**Washington Ethical Society Auditorium, 7750 16<sup>th</sup> St, NW, General admission \$25; FSGW members \$22, with a \$3 discount for advance tickets. Youngsters under 22 and students \$10. For further information, see [www.fsgw.org](http://www.fsgw.org) or contact our concert chair Marty at 703-354-6460.**

## Planning for New Website is Underway

For many years Dennis Cook has maintained the FSGW website, providing an invaluable source of current and archival information. The Board of Directors of FSGW recognizes that it is important to preserve and build on this resource, to increase its interactivity and marketing potential, and to embrace the expanding range of web content. Therefore, at the February meeting the Board authorized a steering committee to begin the process of evaluating the current website and making recommendations regarding enhancements.

The Web Design Steering Committee invites all FSGW members to assist in this project in two ways:

- Please email your comments, concerns, and questions regarding the current website to the Steering Committee at [webdesign@fsgw.org](mailto:webdesign@fsgw.org). Please put "Current Website" in the subject line.
- If you have skills in web site evaluation, design, development, documentation, maintenance, testing, accounting, etc., and you would like to volunteer to work on this project, please email the committee at [webdesign@fsgw.org](mailto:webdesign@fsgw.org). Please put "Volunteer" in the subject line.

Or talk to any of us when you see us at a concert or dance. Tell us about your vision and tell us if you can help. We're eager to hear from you.

**The Web Design Steering Committee**

**April Blum, Chair; Mary Cliff, Dennis Cook, Will Strang, and Roxanne Watts**

### Table of Contents

#### FSGW

Advance Notices.....	13
Board Members/Meeting.....	8
Board Meeting Highlights .....	8
Chesapeake Dance Weekend.....	9
Sunday Night Contra Dances .....	2
Directions .....	23

Editorial Policy .....	23
English Country Dances .....	4
Family Dance .....	4
Steve Cormier, March 20.....	7
Sings/Swaps & Co-Sponsored Events .	9
Quotes Andy Wallace.....	6

#### Features

March Calendar .....	12-13
----------------------	-------

Classifieds.....	23
Concerts & Concert Series.....	11
Dances .....	15
Dance Classes .....	19
Jams/Open Mics/Audience Participation ..	20
Storytelling .....	21
Workshops, Weekends, Festivals & Special Events .....	22

# FSGW English Country Dances at Glen Echo Town Hall, MD Wednesdays • 8 to 10 pm

Dance on a wood floor in the climate-controlled community room of the Glen Echo Town Hall (Directions, Page 26). Bring clean, non-scuffing shoes for dancing. Cheerful, patient, talented callers are accompanied by top-notch musicians – every Wednesday a different and delightful mix of instruments, including piano, fiddle, flute, harp, oboe, concertina, bassoon, cello, viola, and recorder. Light refreshments served at the break. Experienced and new dancers welcome. No partner required.

Info: Stephanie Smith at 301.229.3577 or Roger Broseus at [English@fsgw.org](mailto:English@fsgw.org)



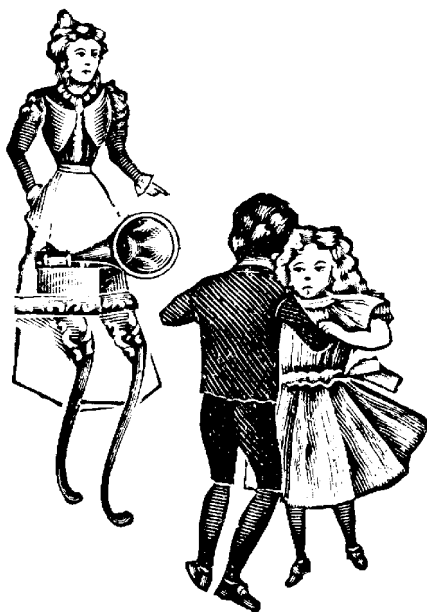
**Admission: \$8 for FSGW members,  
\$10 for non-members.**

## March

- 3 **Dan Gillespie** calls the dancing while **Paul Oorts** (mandolin), **Colleen Reed** (flute), and **Liz Donaldson** (piano), play the music.
- 10 **Anna Rain** calls while **Rhonda Hotop** (fiddle), **Bruce Edwards** (bassoon and concertina), and **Liz Donaldson** (piano), provide the music.
- 17 **Tom Spilsbury** calls to the music of **Becky Ross** (fiddle), **Dan Gillespie** on recorders, and **Melissa Running** on piano.
- 24 **Stephanie Smith** leads the dancing while **Jeff Steinberg** (fiddle), **Karin Loya** (cello), and **Liz Donaldson** (piano), play the tunes.
- 31 **Melissa Running** calls to the music of **Jonathan Jensen** (piano), **Susan Brandt** (flute), and **Ralph Gordon** (cello).

Video of The Minor Spaniard at the FSGW Spring Ball (thanks to Leonard Lu):

<http://www.facebook.com/n/?video/video.php&v=106219220239&mid=79c721G2e1792bfG1a8f71fG1d>



# FSGW Family Dance

## Sunday, March 14 • 3 pm

### Glen Echo Town Hall Upstairs

### Glen Echo, MD (Directions, Page 26)

Bring the entire family and experience the joy of dancing with your children to live traditional American dance music. Every month, on the second Sunday at 3 pm a patient caller teaches you what you need to know, on the spot, about circle, square and contra dancing. \$5 per person (age 4 and up). This is a great activity for any group with folks ages 4 to 104. More info at [www.fsgw.org](http://www.fsgw.org) Band and caller to be announced.



# Andy Cohen, Eleanor Ellis,



and

# “Wale” Liniger

*Old-Fashioned Blues House Party*  
And Brief Membership Meeting

**Saturday, March 13 \* 8 pm**



We're planning a party – an old-fashioned blues house party – for our next program on March 13 at the Washington Ethical Society Auditorium. **Andy Cohen** will come from Memphis to lead the festivities. His cohort in country blues will be **Eleanor Ellis** and **Walter “Wale” Liniger**. They all fell in love with the old songs in the old styles, learned from the masters, and have been proclaiming it to the world ever since.

**Andy Cohen** grew up hearing recordings of Dixieland jazz and blues. Seeing **Rev. Gary Davis** perform took him in a new direction. Andy began to absorb the old music of the American South. Then he mastered playing it, in part while doing fieldwork with several blues elders for his anthropology degree. He became lead boy for blind bluesmen **Jim Brewer**, **Rev. Dan Smith**, **Brother Daniel Womack**, and briefly the very same **Rev. Gary Davis**. Other musical influences include **Skip James**, **Bukka White** and **Brownie McGhee**; and he's worked and hung out with a “who's who” of the blues. Andy has about a dozen recordings, mostly vocal and guitar on the Riverlark label, four solo, including one featuring music played on the *Dolceola* (an early 20th-century zither-type instrument played with a keyboard) apparently the only CD of such music in existence.

One of **Andy Cohen's** recordings also includes **Eleanor Ellis**. Born near New Orleans, Eleanor dabbled in bluegrass before moving to the DC area. By then she was smitten by the blues, and played guitar and sang. She soon began backing up street singer **Flora Molton** and later worked with Piedmont legend **Archie Edwards**. She was a founding member of the DC Blues Society and the Archie Edwards Blues Heritage Foundation. Eleanor's first solo recording was self-released; her latest is on the Patuxent label. In the 1980s, Eleanor produced a video documentary, **Blues House Party**, that included several of her Piedmont blues heroes; its premiere was sponsored by FSGW. She also writes on blues topics and has been a regular performer at the Washington Folk Festival.

Swiss-born **Walter “Wale” Liniger** fell in love with the blues via a **Lightnin' Hopkins** recording. After several years teaching school, he moved to the US, and worked with the University of Mississippi's Blues Archive. A Mississippi Arts Commission Folk Art grant allowed him to apprentice with Delta bluesman **James “Son” Thomas**, a relationship that lasted about seven years. He also backed **Etta Baker** on stage, with vocals, guitar and harmonica. Wale has been teaching blues courses at the University of South Carolina and the South Carolina Honors College, and he has taken the blues to concerts and workshops across Europe.

This is going to be a fun concert of fun music – country blues played by people who fell in love with it, play it really well, teach it, write about it. They will proclaim it to you on **Saturday, March 13, 8 pm at the Washington Ethical Society, 7750 16th St., NW, Washington, DC 20012. General admission is \$15, FREE to Folklore Society members.**

This program will also include an official membership meeting, at the break, with a call for nominations for the 2010-2011 FSGW Board.

FSGW Special Event

Great Falls, VA



# The 21st Annual Potomac River Sacred Harp Singing Convention

## Saturday-Sunday, April 10-11 \* Great Falls, VA

Experience a traditional and powerful singing of American shape-note hymns, fuging tunes, and anthems in unaccompanied four-part harmony from *The Sacred Harp*. The Great Falls Grange Hall has a wood ceiling and floor, as well as space for around 120 singers. The acoustics are lively, bright, clear and ideal for Sacred Harp Singing. *The Sacred Harp* tunebooks (1991 edition) will be available for loan or purchase.

### Saturday, April 10:

All day singing from The Sacred Harp and dinner on the grounds.

Registration begins at 12:30 pm

Saturday evening social will follow the singing on site. Come for the potluck dinner provided by local singers, conversation, and cheer, and at 6:30 pm join the New Traditions Singing of new songs from tunebooks other than *The Sacred Harp*.

### Sunday, April 11: 9:30 am -3:30 pm

All day singing from The Sacred Harp and dinner on the grounds.

Registration begins at 9 am

Potluck dinner provided by local singers

All are welcome: Beginners, experienced singers, and listeners

No admission charge—Free-will offering.

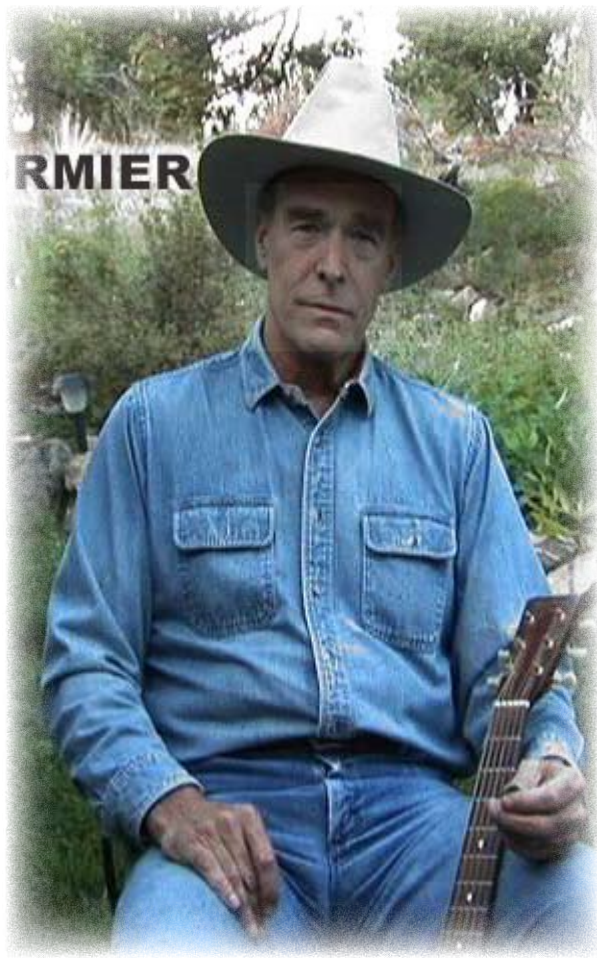
Childcare will be available both days

Local singers, please bring a substantial meal to share each day that you plan to eat lunch at the convention.

The Grange is located at 9618 Georgetown Pike (Rte 193), Great Falls, VA

The convention website is: <http://www.his.com/~sabol/PRC/>

\*Note to Sacred Harp Singers: Next month's newsletter will feature an article on Sacred Harp singing and how it has evolved in the Folklore Society. I would love to hear any personal stories about experiences with Sacred Harp that have been meaningful to you. To share an anecdote or comment, please write to [news@fsgw.org](mailto:news@fsgw.org).



# Steve Cormier

A Voice from  
the Great Southwest

Saturday, March 20 • 8 pm

**Steve Cormier** comes to us from New Mexico, where he has been a musician, a horse wrangler, a film actor, and a university professor. He sings of cowboys and colorful characters from Western American history and myth; of horses, of homes on the range, factory workers and farmers. He has learned both from research and from practical experience about the rancher's craft—how to loop a lariat, how to break a bronco, and how to use songs and stories to deal with the boredom that's the bulk of a cowboy's life.

Steve's songs and stories are mostly about real situations and real people, and provide insights into a way of life that is far removed from the reality experienced by most of us. His inspiration ranges from Woody Guthrie to Merle Haggard to Powder River Jack Lee.

Some of us met him at the FSGW Getaway last October, and wanted a chance to hear him in an entire evening's performance. Join us in the front parlor of **Kathie Mack's** Craftsman bungalow. It may be only three blocks from the Takoma Metro Station on the Red Line, but expect to spend most of the night with your mind transported to the American West.

**Please call Kathie Mack at 301-270-5367, or email [twizzles@starpower.net](mailto:twizzles@starpower.net) for info and directions. \$15 suggested donation.**

**Advance Notice**

Oakton, VA

## English Country Dance Special Event

Saturday, April 17<sup>th</sup> • 2–4:30 pm & 7:30–10:30 pm

Website will have more details at some point. More info in April Newsletter.

Come, learn intriguing dances designed by mathematician Gary Roodman,  
and enjoy the sound of master pianist, *Jacqueline Schwab*  
with Andrea Hoag on fiddle

Sunday, April 18<sup>th</sup> • 3 pm: *Jacqueline Schwab* House Concert  
Capitol Hill, Washington, DC





Andy performing recently.

## Quotes and Commentary by Andy Wallace

*Folklorist, Performer, FSGW Founding Member, a Past President,  
past Membership Chair and past Special Events Chair*

FSGW founding member and Past President Andy Wallace has been involved with the traditional arts for over 45 years. As Associate Director of the National Council for the Traditional Arts (NCTA), he directed the National Folk Festival for 15 years, and many other national events, including the Lowell Folk Festival. He also did a five year stint at the New Orleans Jazz and Heritage Festival, and produced Festival Des Deux Mondes, a tour of Franco-American music and dance in northern New England. Most recently, Andy has worked with the American Folklife Center at the

Library of Congress, and has served on several folk arts panels for the National Endowment of the Arts, including the National Heritage Awards panel.

As a performer Andy has been active since the 60s. He was an original singing crew member of the Hudson River Sloop *Clearwater* with **Pete Seeger**, **Gordon Bok**, **Louis Killen**, and **Don McLean**. He has recorded with **Louis Killen**, **Helen Schneyer**, **Jonathan Eberhart**, **Bob Walser**, and **Jay Ungar** among others.

He says:

*“The Folklore Society has been an important part of my life for almost half a century. There, in the early years, I gained experience in producing events, which eventually became my career, and through the years, I have gained a host of great friends, not to mention my life partner.*

*I first met my wife Sondra at the Getaway in 1985. I was living in Otsego County, New York, where I was Asst. Executive Director of the county Community Action Agency. Sondra worked for the Dept. of Health and Human Services (still does), which, under Ronald Regan, was hell-bent on putting us out of existence. This made for some interesting conversation first time round, but by the time I came back a couple of years later, a spark was lit. We married in July of 1988, shortly after I returned to the Washington area, and we’ve been together ever since, going on 22 years.*

***Jonathan Eberhart**, another founding member, was my dear friend and long-time singing partner. He had a razor-sharp wit. During a show one night, a young woman shouted out a request for a Bob Dylan song. Jonathan, no Dylan fan, launched into a three verse, improvised on the spot, piece of absolute nonsense he dubbed “Purple Rutabaga of the Mind”. We were all amazed and delighted. One of Jonathan’s favorite quips was “I feel more like I do now than when I first came in.” Huh???*

*For the NCTA I traveled around the country organizing festivals for nine years. A large part of my job was cultivating the press. Newspapers are vital in getting the word out, but they are also always on the lookout for controversy, which was exasperating. My friend and colleague, **Joe Wilson**, was Director of the NCTA at the time, and a veritable fount of folk wisdom. One day he warned me, “Never pick a fight with the man who owns the ink. You’ll always lose.” (He was right, now I know.)*

*“The late **Charles Kuralt**, host of the long-running, Emmy Award winning TV series, “On the Road”, is one of my heroes. He said, “The everyday kindness of the back roads more than makes up for the acts of greed in the headlines.” We crossed paths in the early ‘90s when he was hosting the National Heritage Fellowships, and I found him to be as interesting and down-to-earth- in person as he was on his show. Like Kuralt, I feel that I’ve been extraordinarily fortunate to make a living doing what I love—making music, working with great traditional artists, and having a hand in preserving the past.*

*Restoration is my other passion. I’ve restored five 18<sup>th</sup> and 19<sup>th</sup> century houses in Maryland and New York state, all of which I’ve lived in....another way of carrying the past into the present.*

*That’s it for now. As my old friend, **Pete (Seeger)** would say, “Take it easy, but take it.”*



Andy Wallace with Jonathan Eberhart and Mike Rivers, the “Ringshouters” c. 1968.

*Andy*



# FSGW Sings/Swaps & Co-sponsored Events

## FSGW Open Sing • Colmar Manor, MD

*Friday, March 5 • 8:30 pm*

Snowed out in February, so we'll try it again in March. **Michele Callaghan and Mary Jo Hlavaty Shapiro** are co-hosting the sing at Mary Jo and David's place in Colmar Manor, MD. The theme is dates and times: important (and not so important) dates, times of the day, or the concept of time marching on. At this second sing of the year, reflect on time gone by and times to come. **Contact Michele (Callaghan@verizon.net), or Mary Jo (mjhlatvtyshapiro@yahoo.com) for more info.**

## FSGW Storyswap • Silver Spring, MD

*Saturday, March 6 • 7:30 PM*

Storytellers and listeners are invited to the home of **Cricket Parmalee** for a delightful evening of shared stories and potluck snacks. Free. For RSVPs and directions, call 301.588.3912.

## FSGW Gospel Sing • Colmar Manor, MD

*Sunday, March 14 • 4 - 8 pm*

Gospel sings are held the second Sunday of every month at various homes. Singing starts at 4pm and breaks for a covered dish supper at 6pm with more singing after supper. Everyone is welcome! This month's Gospel Sing will be at the home of **Mary Jo Hlavaty Shapiro**. Info/directions: 301.699.8833.

## Sacred Harp Singing • Arlington, VA

*Sunday, March 28 • 4-8:00 pm*

Monthly on the fourth Sunday, singers enjoy the unaccompanied harmonies of the old-time shapenote hymns and fugues in the 1991 edition of the original *Sacred Harp* and 1958 *Christian Harmony* (loaner books available), with a potluck supper break from 6-7 pm.

**Info: 301.229.8534**

**Directions:** St Peter's Church. St. Peter's is one half mile south of Chain Bridge, on the west side of Glebe Road, (crossing from Washington, on your right; from Virginia, on your left; from the Beltway, take the GW Parkway south to 123 north, then right at the T to Glebe. The church is set back from Glebe Rd. Turn where the sign says Tazewell st, and bear right.

## Co-Sponsored Event

## Glen Echo International Folkdancers • Bethesda, MD

*Thursdays, 7:30-10:30 pm*

Every Thursday at the Brookmont Baptist Church, 4000 Virginia Place, Bethesda, MD 20816. Lesson at 7:30. Request dances from 9-10:45. Mostly recorded music. No partner/experience necessary. Wear comfortable clothing and soft soled shoes. Adm. \$5. **Info: Jamie at 301.466.3018, or dancingplanet@erols.com**



## 28th Annual Chesapeake Dance Weekend!

**April 9-11, 2010 at Camp Lefts in Edgewater, MD**

**(15 minutes south of Annapolis)**

Yearning for a warm, FUN, friendly place where you can dance, laugh, feel the sunshine, and enjoy delicious and healthy food; where you can reconnect with old friends or enjoy a solitary canoe ride? Come experience all of this and more at the **Chesapeake Dance Weekend** featuring world class callers, dance leaders, and musicians. Incomparable callers **Tony Parkes** with *The Moving Violations Trio*, **Cis Hinkle** with *Old Sledge*, and **Matthew Duvencek** and **Anna Gilbert** teaching exquisite waltz and sizzling tango accompanied by *Serpentine*. It's gonna be one swingin' party!

And what else is there to do besides dance? **A Gospel Song** session on Sunday morning, concert on Saturday afternoon, and late night music jam sessions are an integral part of this camp. There are also tennis courts and basketball courts, walking trails, and canoeing (weather permitting).

Wear comfortable clothes for dancing in the day. Some people like to dress up a bit for the Saturday evening dance. Please change into dance shoes (or indoor shoes) before dancing. Accommodations are heated, dormitory-style cabins which sleep eight to twelve per room. Tenting (if you bring your own) is an option. Trail's End Kitchen caters our meals beginning with a delicious dinner on Friday night through lunch on Sunday.

There is a substantial Youth Discount for dancers age 13-25 (attend for only \$150), and Kitchen Scholarship (\$50 discounts for four hours of help) are still available. Dancers ages 18-25 may combine these and attend for a cool \$100.

**For ALL the details, check out [www.fsgw.org](http://www.fsgw.org) and click on Chesapeake Dance Weekend**

## Nominating and Election Process for the 2010/2011 Board of Directors

Preparations for the election of next year's FSGW board are underway. The Nomination committee has been appointed, consisting of: **Charlie Baum, Jim Cole (chair), Robert Cox and Colleen Reed**. They are in the process of working on a slate of candidates for the election in May.

Nominations for the FSGW board can be made at the membership meetings at the monthly program on March 13 or the Sunday night contra dance on March 21. Both these events are free to members. Additionally, nominations can be submitted, by March 30, directly to the Election Committee by petition of five current FSGW members. You can contact any of the committee members directly or email the Election Committee at [elections@FSGW.org](mailto:elections@FSGW.org).

Election ballots will be mailed out by May 1st, but you have the option of casting your ballot electronically. This is an environmentally friendly way to cast your ballot, and more cost effective for FSGW.

### Here's how:

Go to the FSGW website, click on the Members Page link at the top; login using the last name and the ID number above your name shown on your newsletter label; click the MY MENU button; then click the MY NAME button and then the CONTACT button; in the Contact Information Box on the line labeled Electronic you have the option of checking a box to receive the Newsletter electronically and/or the election ballot electronically. Check the boxes you want and then click the CLICK TO SAVE CHANGES button. In order not to receive a paper ballot, this needs to be done prior to the mailing of the ballots the last week of April.

## FSGW Board Meeting Highlights • (February 2, 2010)

- The board approved the formation of a steering committee to explore options for the new website
- We are looking into having one or more professional videos made of dance events, Glen Echo, and other FSGW programs, and are looking for candidates for the job.
- **Nowell Sing We Clear** cost FSGW \$519.00
- There might be an Eberhart concert in May with Scottish singer **Norman Kennedy**.
- We will look into helping WES upgrade their sound system, as we did 7-8 years ago.

### FSGW Board 2009-2010

Mary Cliff, <i>president</i>	<a href="mailto:president@fsgw.org">president@fsgw.org</a>	703-534-7581
Charlie Baum, <i>past president</i>	<a href="mailto:pastpresident@fsgw.org">pastpresident@fsgw.org</a>	301-587-2286
David Shewmaker, <i>vice president</i>	<a href="mailto:vicepresident@fsgw.org">vicepresident@fsgw.org</a>	202-669-9674
Jerry Stein, <i>treasurer</i>	<a href="mailto:treasurer@fsgw.org">treasurer@fsgw.org</a>	703-671-6181
Aimee Steussy, <i>secretary</i>	<a href="mailto:secretary@fsgw.org">secretary@fsgw.org</a>	703-772-5962
Marty Summerour, <i>programs</i>	<a href="mailto:program@fsgw.org">program@fsgw.org</a>	703-354-6460
Penelope Weinberger, <i>dance</i>	<a href="mailto:dance@fsgw.org">dance@fsgw.org</a>	301-315-9461
Stephanie Kaufman, <i>membership</i>	<a href="mailto:members@fsgw.org">members@fsgw.org</a>	301-588-7285
Roxanne Watts, <i>publications</i>	<a href="mailto:newsletter@fsgw.org">newsletter@fsgw.org</a>	703-618-1799
Linda Goodman, <i>publicity</i>	<a href="mailto:publicity@fsgw.org">publicity@fsgw.org</a>	202.386.8252
Dennis Cook, <i>past treasurer</i>	<a href="mailto:pasttreasurer@fsgw.org">pasttreasurer@fsgw.org</a>	301-776-4314

#### Members-at-Large

Chris Bracken	<a href="mailto:board1@fsgw.org">board1@fsgw.org</a>	301-575-4736
Hannah Platt	<a href="mailto:board2@fsgw.org">board2@fsgw.org</a>	301-717-4641
Steven Roth	<a href="mailto:board3@fsgw.org">board3@fsgw.org</a>	301-933-2070

#### Mini Festival Coordinating Committee

April Blum, <i>Mini-Fest Chair</i>	<a href="mailto:minifest@fsgw.org">minifest@fsgw.org</a>	703-978-2774
David Shewmaker,	<a href="mailto:vicepresident@fsgw.org">vicepresident@fsgw.org</a>	202-669-9674

#### Washington Folk Festival Coordinating Committee

Sousan Frankeberger		703-803-3272
Dwain Winters		301-657-2789

### FSGW Board Meeting

**Tuesday, March 2 • 8 PM**

The monthly FSGW board meeting will be held in Classroom 201 Arcade Bldg at Glen Echo Park, MD. All FSGW members may attend. If you wish the Board to consider a particular matter, please contact the appropriate board member, or **Mary Cliff by e-mail, [president@fsgw.org](mailto:president@fsgw.org) or call afternoons or evenings 703-534-7581** in advance of the meeting.

# Concerts & Concert Series

## Concerts

### Atwater-Donnelly Duo • Baltimore, MD *Saturday, March 6 • 4:30 workshop, 8 pm concert*

Clogging workshop and folk song singalong from 4:30 to 6 pm, then a concert of traditional American and Celtic folk music and dance, along with original songs and poetry by the award winning husband and wife duo, **Aubrey Atwater and Elwood Donnelly**. Woodbrook Baptist Church, 25 Stevenson Lane. Reservations strongly suggested. Go to [www.bfms.org](http://www.bfms.org) for ticket prices, or call 410.321.8419, or 410.979.8150

### Kevin Burke Irish Fiddle • Baltimore, MD *Friday, March 19 • TBD*

Renowned traditional Irish fiddler, **Kevin Burke**, scheduled to perform. Look for details at [specialevents@bfms.org](mailto:specialevents@bfms.org). Kevin's website is [www.kevinburke.com](http://www.kevinburke.com).

### Bluegrass, Irish, and Humor • Columbia, MD *Saturday, March 20 • 8 pm*

Enjoy an evening with the **Orrin Star Duo**. \$15 donation. Doors open at 7 pm. For location, reservation, contact [soccerdr@gmail.com](mailto:soccerdr@gmail.com). See [www.orrin-star.com](http://www.orrin-star.com) for a sample of Orrin's music and humor.

### Sister Acts • Shepherdstown, WV *Saturday, March 20 \* 8 pm*

**Sister Acts: Lisa and Heather Malyuk and Gadelle.** Lisa and Heather Malyuk are multi-instrumentalists from Ohio whose repertoire ranges from energetic traditional jigs and reels, to bittersweet waltzes, from driving international rhythms, to old fashioned hymns. **Gadelle** is a feisty all-woman, French-Acadian duo that taps and sings their way into your soul. At Shepherd University's Reynolds Hall on the corner of King and German Streets. Admission is \$15 adults, \$12 seniors, \$10 SMD members, \$8 students, Free to Shepherd Students with Rambler ID. For more information call Joanie at 304.263.2531 or email [updf@earthlink.net](mailto:updf@earthlink.net), on the web at [www.smad.us](http://www.smad.us).

### Irish Traditional Music • Biglerville, PA *Saturday, March 27 • 7:30 pm*

Stone Jug House Concerts (near Gettysburg, PA) presents the Irish traditional music of **Kilshanny**. \$15 per person. Reservations highly recommended. Info: 717.677.4420. <http://www.myspace.com/stonejugconcertseries>

### Birchmere Concerts • Alexandria, VA

For tickets, reservations, [www.birchmere.com](http://www.birchmere.com), or 703.549.7500. The legendary Birchmere is at 3701 Mt. Vernon Ave.

### March • All at 7:30 pm

- 3&4 **Gaelic Storm**, High energy Irish-American - \$35
- 5 **Leon Redbone**, early 20th century blues/jazz - \$35
- 6 **David Bromberg and the Angel Band**, hot picking, blues, great harmonies - \$35
- 16 **Tom Rush**, 60's legend - \$35
- 28 **Nitty Gritty Dirt Band**, hippie jugband to country rock since 1966 - \$45

### The Barns at Wolf Trap • Vienna, VA

#### March • Mostly 8, one at 7:30 pm

- 3&4 **John Gorka**, singer/songwriter, \$20
- 6&7 **Celtic Crossroads**, youthful company of Irish musicians, dancers, \$25, 7:30 pm
- 10 **Habib Koite and Bamada**, Malian guitarist and band, \$25
- 12 **Greg Brown**, poet, singer, songwriter, \$30
- 15 **Altan**, legendary Irish band; \$25
- 17 **Battlefield Band**, long-running Scottish band, \$22
- 18 **Tom Paxton**, legendary singer and songwriter, \$22
- 23&24 **HAPA**, contemporary Hawaiian duo, \$25

## Concert Series

*Listed by day of the week*

*sundays*

### Focus Inn Alexandria • Alexandria, VA *March 14 • 8 pm*

**The Kennedys** with special guest, **Dan Cohn**. Church of the Resurrection, 2280 N. Beauregard St. 7 pm; admission \$18 public, \$15 members. Info: 703.501.6061, [kay@focusmusic.org](mailto:kay@focusmusic.org) or [www.focusmusic.org](http://www.focusmusic.org)




*mondays*


### Institute of Musical Traditions • Rockville, MD

Saint Marks Presbyterian Church, 10701 Old Georgetown Rd, Rockville, MD 20852. Shows at 7:30. More info: 301.754.3611 or [www.imtfolk.org](http://www.imtfolk.org). Check the website for current listings.

#### March

- 1 **IONA & OCEAN**, co-bill, \$15 adv/\$20 door
- 8 **Le Vent du Nord** CD release concert, \$20 adv/\$25 door
- 15 **Patrick Street**, \$25 adv/\$30 door, 8 pm at JCC or Greater Washington, 6125 Montrose Rd, Rockville, MD
- 22 **John Jorgenson Quintet**, \$20 adv/\$25 door
- 29 TBA

SUNDAY	MONDAY	TUESDAY	WEDNESDAY	THURSDAY
	<p style="text-align: right;"><b>1</b></p> <p>7 pm DC Bluegrass Jam                      7:30 Bethesda Int'l Dancers                      7:30 Arlington Morris Women                      730 IMT Concert  <i>IONA and Ocean</i>                      8 Baltimore English Country Dance                      8 Bethesda Scottish Country Dance                      8 Balkan Singing</p>	<p style="text-align: right;"><b>2</b></p> <p>7:30 Reston/Herndon Folk Club                      8 Greenbelt Scottish Country Dance                      8 Arlington Int'l Dancing                      8 Sea Chanteys Sing/Wheaton  <b>8 FSGW BOARD MEETING</b></p>	<p style="text-align: right;"><b>3</b></p> <p>7:30 Rock Creek Morris Women                      7:30 Kensington Row Story Salon  <b>8 FSGW ENGLISH COUNTRY DANCE</b>                      8 Baltimore Contra Dance                      8 Alexandria Scottish Country Dance                      8 Columbia Int'l Dancing                      8:15 Potomac Israeli Dancing</p>	<p>7 pm F...</p> <p><b>7:30 C...</b></p> <p>7:30 Cl...</p> <p>7:45 A...</p> <p>8 M...</p> <p>8 F...</p> <p>9 GL...</p>
<p style="text-align: right;"><b>7</b></p> <p>9 am Annapolis Jam                      3 pm Wheaton Scottish Jam                      3 Glen Echo Waltz  <b>7 FSGW CONTRA DANCE</b>  <b>TED HODAPP WITH CONTRATOPIA</b></p>	<p style="text-align: right;"><b>8</b></p> <p>7:30 Bethesda Int'l Dancers                      7:30 Arlington Morris Women                      7:30 IMT Concert  <i>Le Vent du Nord</i>                      8 Baltimore English Country Dance                      8 Bethesda Scottish Country Dance                      8 Balkan Singing</p>	<p style="text-align: right;"><b>9</b></p> <p>7:30 Reston/Herndon Folk Club                      8 Greenbelt Scottish Country Dance                      8 Arlington Int'l Folk Dancing                      8 Focus Rockville                      8 Old Time Jam</p>	<p style="text-align: right;"><b>10</b></p> <p>7:30 Rock Creek Morris Women  <b>8 FSGW ENGLISH COUNTRY DANCE</b>                      8 Sea Chanteys Sing/Baltimore                      8 Baltimore Contra Dance                      8 Alexandria Scottish Country Dance                      8 Columbia Int'l Dancing                      8 Focus Rockville                      8:15 Potomac Israeli Dancing</p>	<p>7 F...</p> <p><b>7:30 C...</b></p> <p>7:30 Cl...</p> <p>7:45 A...</p> <p>8 M...</p> <p>8 F...</p> <p>9 G...</p>
<p style="text-align: right;"><b>14</b></p> <p>9 am Annapolis Jam                      2 pm CABOMA Jam                      2 Andy Cohen Workshop                      3 Glen Echo Zydeco Dance  <b>3 FSGW FAMILY DANCE</b>  <b>4 FSGW GOSPEL SING</b>                      7 Focus Inn Alexandria                      7 Slow Blues/Swing Dance  <b>7:30 FSGW CONTRA DANCE</b>  <b>EVA MURRAY WITH TAYLOR AMONG THE DEVILS</b></p>	<p style="text-align: right;"><b>15</b></p> <p>7 pm DC Bluegrass Jam                      7:30 Bethesda Int'l Dancers                      7:30 Arlington Morris Women                      7:30 IMT concert  <i>Patrick Street</i>                      8 Baltimore English Country Dance                      8 Bethesda Scottish Country Dance                      8 Balkan Singing</p>	<p style="text-align: right;"><b>16</b></p> <p>7:30 Reston/Herndon Folk Club                      8 Greenbelt Scottish Country Dance                      8 Arlington Int'l Folk Dancing</p>	<p style="text-align: right;"><b>17</b></p> <p>7 Arlington Jam                      7:30 Rock Creek Morris Women  <b>8 FSGW ENGLISH COUNTRY DANCE</b>                      8 Sea Chanteys Sing/Annapolis                      8 Baltimore Contra Dance                      8 Columbia Int'l Dancing                      8 Alexandria Scottish Country Dance                      8:15 Potomac Israeli Dancing</p> 	<p>7</p> <p><b>7:30 C...</b></p> <p>7:30 Cl...</p> <p>7:45 A...</p> <p>8 M...</p> <p>8 F...</p> <p>8 B...</p> <p>9 G...</p>
<p style="text-align: right;"><b>21</b></p> <p>9 am Annapolis Jam                      3 pm Glen Echo Waltz  <b>7:30 FSGW CONTRA DANCE</b>  <b>FREE TO MEMBERS!!</b>  <b>MEMBERSHIP/NOMINATIONS MEETING</b>  <b>BETH MOLARO WITH LAURA AND THE LAVA LAMPS</b></p> <p><i>Upper Potomac Spring Music Weekend</i></p>	<p style="text-align: right;"><b>22</b></p> <p>7:30 Bethesda Int'l Dancers                      7:30 Arlington Morris Women                      7:30 IMT Concert  <i>John Jorgenson Quintet</i>                      8 Baltimore English Country Dance                      8 Bethesda Scottish Country Dance                      8 Balkan Singing                      8 Alpine Dancers</p>	<p style="text-align: right;"><b>23</b></p> <p>6 pm Cajun Jam                      7:30 Reston/Herndon Folk Club                      Spook Handy                      8 Greenbelt Scottish Country Dance                      8 Arlington Int'l Folk Dancing                      8 Focus Rockville                      8 Sea Chanteys Sing/DC</p>	<p style="text-align: right;"><b>24</b></p> <p>7:30 Rock Creek Morris Women  <b>8 FSGW ENGLISH COUNTRY DANCE</b>                      8 Baltimore Contra Dance                      8 Columbia Int'l Dancing                      8 Alexandria Scottish Country Dance                      8:15 Potomac Israeli Dancing</p>	<p>7 F...</p> <p><b>7:30 C...</b></p> <p>7:30 Cl...</p> <p>7:45 A...</p> <p>8 M...</p> <p>8 F...</p> <p>8 B...</p> <p>9 G...</p>
<p style="text-align: right;"><b>28</b></p> <p>9 am Annapolis Jam                      2 pm CABOMA Jam                      4 GWCC Montly Ceili Dance                      4 Lutherville MD Sotrytelling  <b>4 FSGW SACRED HARP SINGING</b>  <b>7:30 FSGW CONTRA DANCE</b>  <b>REBECCA LAY WITH MORTAL WOMBAT</b></p> <p><i>GWCC Ceili Weekend</i></p>	<p style="text-align: right;"><b>29</b></p> <p><b>First Night of Passover</b></p> <p>7:30 Bethesda Int'l Dancers                      7:30 Arlington Morris Women                      7:30 IMT Concert                      8 Baltimore English Country Dance                      8 Bethesda Scottish Country Dance                      8 Alpine Dancers                      8 Balkan Singing</p>	<p style="text-align: right;"><b>30</b></p> <p>7:30 Reston/Herndon Folk Club                      8 Greenbelt Scottish Country Dance                      8 Arlington Int'l Dancing</p>	<p style="text-align: right;"><b>31</b></p> <p>7:30 Rock Creek Morris Women  <b>8 FSGW ENGLISH COUNTRY DANCE</b>                      8 Columbia Int'l Dancing                      8 Alexandria Scottish Country Dance                      8:15 Potomac Israeli Dancing</p>	

THURSDAY	FRIDAY	SATURDAY
<p><b>4</b></p> <p>Frederick Irish/Bluegrass  <b>GLEN ECHO INT'L FOLKDANCERS</b>                      Chevy Chase Int'l Folkdancers                      Arlington Circle Dance                      Mt Vernon Int'l Dancing                      Loggy Bottom Morris Men                      Glen Echo Slow Blues Dance</p>	<p><b>5</b></p> <p>7 Arlington Jam                      7 Potter's House Concert                      8 Cellar Stage                      8:15 Greenbelt Int'l Folk Dancing                      8:30 Friday Night Contra Dance  <b>8:30 FSGW OPEN SING</b></p>	<p><b>6</b></p> <p>1 pm Archie Edwards Blues Jam                      5:30 Galesville Community Dance                      6:30 Norwegian Dance/Pot Luck                      7:00 Patriots Ball (English Country)                      7:30 Elverson Contra Dance  <b>7:30 FSGW STORY SWAP</b>  <b>8 FSGW CONCERT</b>  <b>PEGGY SEEGER</b>                      8 IMT Next to the House  <i>The Weathered Road</i>                      8 Atwater-Donnelly Concert                      8 Common Ground Concert                      8 Shepherdstown Contra Dance                      8 Washington Swing Dance                      8:15 Israeli Dance Party</p>
<p><b>11</b></p> <p>Frederick Irish/Bluegrass  <b>GLEN ECHO INT'L FOLKDANCERS</b>                      Chevy Chase Int'l Folkdancers                      Arlington Circle Dance                      Mt Vernon Int'l Dancing                      Loggy Bottom Morris Men                      Glen Echo Slow Blues Dance</p>	<p><b>12</b></p> <p>7 Potter's House Concert                      8 Harrisburg Contra Dance                      8 Cellar Stage                      8:15 Greenbelt Int'l Folk Dancing                      8:30 Friday Night Contra Dance</p>	<p><b>13</b></p> <p>1 pm Archie Edwards Blues Jam                      7 SMTMD Contra Dance  <b>8 FSGW PROGRAM</b>  <b>BLUES HOUSE CONCERT</b>  <b>ANDY COHEN W/ELEANOR ELLIS</b>  <b>&amp; "WALE" LINIGER</b>  <b>MEMBERSHIP MEETING</b>                      8 Baltimore Contra Dance                      8 Reston Contra Dance                      8 Silver Spring English Country Dance</p>
<p><b>18</b></p> <p>Frederick Irish/Bluegrass Jam  <b>GLEN ECHO INT'L FOLKDANCERS</b>                      Chevy Chase Int'l Folkdancers                      Arlington Circle Dance                      Mt Vernon Int'l Dancing                      Loggy Bottom Morris Men                      Baldwin's Station                      Glen Echo Slow Blues Dance</p>	<p><b>19</b></p> <p>7 Potter's House Concert                      7:30 333 Coffeeshouse                      Elizabeth LaPrelle                      8:15 Greenbelt Int'l Folk Dancing                      8:30 Friday Night Contra Dance</p>  <p><i>Upper Potomac Spring Music Weekend</i></p>	<p><b>Spring Begins! 20</b></p> <p>1 pm Archie Edwards Blues Jam                      7 Annapolis Contra Dance                      7 Scandinavian Dance Greenbelt                      7:30 Telling Moments Storytelling Theater Opening Takoma Park                      8 Furnace Mountain Concert the Lyceum, Alexandria, VA                      8 Orrin Star Duo Concert MD                      8 Sister Acts Concert, WV                      8 Lancaster PA Contra Dance  <i>Upper Potomac Spring Music Weekend</i></p>
<p><b>25</b></p> <p>Frederick Irish/Bluegrass  <b>GLEN ECHO INT'L FOLKDANCERS</b>                      Chevy Chase Int'l Folkdancers                      Arlington Circle Dance                      Mt Vernon Int'l Dancing                      Loggy Bottom Morris Men                      Baldwin's Station                      Glen Echo Slow Blues Dance</p>	<p><b>26</b></p> <p>7 Potter's House Open Mic                      8 Glen Echo Cajun/Zydeco Dance                      8 Harrisburg Contra Dance                      8:15 Greenbelt Int'l Dancing                      8:30 Friday Night Contra Dance</p> <p><i>GWCC Ceili Weekend</i></p>	<p><b>27</b></p> <p>1 pm Archie Edwards Blues Jam                      1:30 Hammer Dulcimer Jam                      2 pm Scottish Dance Party                      7 Chesapeake Community Dance                      7 Mary Baldwin Ball (English Country Dance)                      7:30 Kilshanny Concert Biglerville, PA                      8 Frederick Contra Dance</p> <p><i>GWCC Ceili Weekend</i></p>

## FSGW

# Advance Notice

---

**April 9-11,**  
**28TH ANNUAL CHESAPEAKE**  
**DANCE WEEKEND**  
 Camp Letts • Edgewater, MD

---

**April 9-11**  
**21ST ANNUAL POTOMAC RIVER**  
**SACRED HARP CONVENTION**

---

**Saturday, April 10**  
**Mike Agranoff**  
*House Concert • Linda Goodman's,*  
*Alexandria, VA*

---

**Thursday, April 15 • 8 pm**  
**MARTYN WYNDHAM-READ**  
*traditional English & Australian singer*  
*House Concert • Location TBA*

---

**Saturday, April 17**  
**2-4:30 & 7:30-10:30 pm**  
**ENGLISH COUNTRY DANCE**  
**SPECIAL EVENT**  
**With JACQUELINE SCHWAB,**  
 master pianist,  
**ANDREA HOAG & GARY ROODMAN**  
 Oakton, VA

---

**Sunday, April 18 • 3 pm**  
**Jacqueline Schwab,**  
 Pianist  
 House Concert • David Roodman & Mai  
 Pham • Capitol Hill, Washington, DC

---

**Monday, April 19 • 8 pm**  
**Brian Peters**  
*Traditional songs & music from*  
*England w/squeezeboxes & guitar*  
*House Concert • Cooks' Laurel, MD*

---

**Saturday, April 24 • 8 pm**  
**Paul Brown**  
*House Concert • Wallaces, Upper Marlboro, MD*

---

**June 5 & 6**  
**30TH ANNUAL WASHINGTON**  
**FOLK FESTIVAL**  
 Glen Echo Park, MD

---

**October 1-4**  
**46TH ANNUAL GETAWAY**  
 West River Retreat Center • MD

# MARCH 2010

**Concerts continue***Tuesdays***Focus Rockville • Rockville, MD**

Our new home is the Unitarian Universalist Church of Rockville about which we are very excited. Come join us at 100 Welsh Park Drive, 20850 [www.focusmusic.org](http://www.focusmusic.org) 301.275.7459

March • 8 pm

- 9 David Nachmanoff  
23 Chuck Pyle

**Folk Club of Reston-Herndon**

*Tuesday, March 23 • 7: 15*

**Spook Handy**— Spook hosted the longest running open mic (20 years) in the history of NJ. A very popular entertainer with a quick wit, and varied repertoire from spiritual to socially responsible. Monthly concerts at the Tortilla Factory, 648 Elden Street. Celebrating its 25th year. Doors open at 6 pm. **Info/directions: 703.435.2402, jamesue@aol.com, or www.restonherndonfolk.com** \$11 Members, \$12 non-members

*Thursdays***Baldwin's Station • Sykesville, MD**

*Thursdays • 8 pm*

7618 Main St, Sykesville, MD. Shows begin at 8. Ticket prices vary. \$2 service charge on credit card orders, \$1 service charge for cash or checks. **Info: 410.795.1041, www.uptownconcerts.com, or uptownconcerts@gmail.com**

March

- 18 **Seamus Kennedy** Celtic singer, fast-paced humor, \$17  
25 **IONA**—Traditional, haunting Celtic, toe tapping dances, \$20

*Fridays***Cellar Stage • Baltimore, MD**

*Fridays, • 8 pm*

In the basement of Faith Community United Methodist Church, 5315 Harford Road **Info: 410.521.9099 or www.uptownconcerts@gmail.com**

March

- 5 **Beoga**, Irish ensemble with dueling accordians  
12 **Angel Band**, three part female harmony; roots, blues, country, gospel, folk

April

- 9 Archie Fisher and Garnet Rogers

**Potter's House Benefit Concerts • Washington, DC**

Potter's House, 1658 Columbia Rd NW, easy Metro access and off street parking available. Good music, good food, for a good cause. 7 pm. Benefit concerts, \$15 suggested donation; open mic night free. **Info: 202.232.5483 or www.PottersHouseDC.org**

**333 Coffeehouse • Annapolis, MD**

*Friday, March 19 • 8 pm*

**Elizabeth LaPrelle**—Appalachian traditional singer. Annapolis Unitarian Universalist Church, 333 DuBois Rd, off Bestgate Ave. Acoustic music. Dessert and coffee available in this smoke- and alcohol-free environment. Doors open at 7:30, concert at 8. Admission \$10, \$8 for Seniors/students. **Info: 443.786.0463 or www.fsgw.org/333/**

*Saturdays***Common Ground • Westminster, MD**

*Saturday, March 6 • 8 pm*

**Alasdair Fraser and Natalie Haas**. He's the Scottish fiddler extraordinaire, and she is a cello virtuoso, and a perfect musical complement. McDaniel College Auditorium, Gen. Adm.: \$19 **Info at 410.857.2771, cground@qis.net, or www.commongroundonthe-hill.org**

**IMT Next to the House Concerts****• Takoma Park, MD**

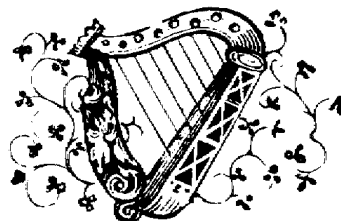
*Saturday, March 6 • 8 pm*

**The Weathered Road** is an on-going project of guitarist/singer-songwriter **Christopher Bell**, vocalist/fiddler **Libby Eddy** and lead guitarist/vocalist **Stephen Geruschat** that blends the genres of singer-songwriter, folk, traditional, Celtic, and newgrass to create a sound all their own—a sound they call AmeriCeltic Newgrass. **At the Liz Lerman Dance Exchange. 7117 Maple Ave. \$12. Info: www.imtfolk.org**

**Sunspot Concerts • Alexandria, VA**

*Saturday, March 20 • 8 pm*

**Furnace Mountain** is a quartet of traditional musicians who play the music of the Virginia countryside and mountains. **Dave Van Deventer** (fiddle), and **Danny Knicely** (mandolin and guitar) with vocalists **Morgan Morrison** (bouzouki), and **Aimee Curl** (bass) layer in a stunning mix of the earthy and ethereal. At the Lyceum, 201 S. Washington St., Alexandria, VA Tickets \$21 at the door or \$18 in advance at [www.sunspotpro.com](http://www.sunspotpro.com)



# Dances

## Community/Family

### The FSGW Family Dance is listed on Page 2

#### Galesville Community Square Dance • Galesville, MD

**Saturday, March 6 • 5:30-10 pm**

Traditional Appalachian dance tunes by **Leah Weiss**, (fiddle), and **Gary Wright** (guitar) and friends. Sittins welcome on fiddle, guitar and clawhammer banjo. Dance squares, circles, longway sets and waltzes with **Janine Smith** calling. 6 pm- pot luck dinner, 7 pm-family friendly dancing; 8:30 more challenging dancing. Galesville Memorial Hall, 952 Galesville Road, Adults \$10; 5-17, \$5; Under 5 free. **For info: call 301-926-9142 or www.galesville.info**

#### Chesapeake Community Dance • St. Michaels, MD **Saturday, March 27 • 7-9:30 pm**

Contras, squares, circle and line dances. Music by **The Off'n Ensemble** (www.WoodenFlute.com), with **Laura Brown** calling. From 7-7:30 will be open band time, so bring your instruments and play along. Download tunes to practice from www.CarpeDiemArts.org. Suggested donation: \$7 adults, \$3 children/students. Refreshments provided. Christ Church Parish Hall, 103 Willow St. **Info: busygraham@gmail.com, or 301.466.0183.**

## Contra

*Sundays*

### The FSGW Sunday Night Dances are listed on page 2.

*Wednesdays*

#### Baltimore Folk Music Society • Baltimore, MD **Wednesdays • 8-10:30 pm**

Lovely Lane Ch., 2200 St. Paul St, Baltimore. Beginners are always welcome. New dancer workshops at 7:30 on 2nd and 4th Wednesdays. Nationally-known musicians and callers appear regularly. \$8 Members/\$12 Non-members, \$3 discount to students w/ID.

#### March

- 3 **Michael Barraclough** calls to *the Martin Family*
- 10 **David Giusti** calls to *Sugar Beat*
- 17 **Perry Shafran** calls to Irish tunes from the *Baltimore Open Band*
- 24 **Rebecca Lay** calls to *Rocket Surgery*
- 31 **No Dance**

*Fridays*

#### Friday Night Dancers • Glen Echo Park, MD **Fridays • 8:30-11:30 pm**

The Friday Night Dancers (in cooperation with the National Park Service, Montgomery County, and the Glen Echo Park Partnership for Arts and Culture) sponsor weekly contra dances to live music in the Glen Echo Spanish Ballroom. New dancer classes start at 7:30. Dances start at 8:30. \$9 for the lesson and dance. To play for or call a dance, email [fdgigs@petml.com](mailto:fdgigs@petml.com). **General info at [www.fridaynightdance.org](http://www.fridaynightdance.org)**

#### March

- 5 **Ted Hodapp** calls to *Contratopia* with **Eric Sessions** on fiddles, **Patrice Pakiz** on piano, oboe and percussion, **Pat O'Loughlin** on concertina and banjo, and **John Goodin** on mandolin and guitar.
- 12 Enjoy the fabulous *Glen Echo Open Band*
- 19 **Beth Molaro** calls to *Laura and the Lava Lamps* with **Laura Lengnick** on fiddle, **Dave Wiesler** on piano and guitar, and **Ralph Gordon** on bass.
- 26 **Rebecca Lay** calls to *Taylor Among the Devils* with **Marty Taylor** on recorders, and concertina, **Steve Hickman** on fiddle, and **Jonathan Jensen** on piano.

#### Locust Lane Contra • Harrisburg, PA **2nd and 4th Fridays, March 12 & 26 • 8-11 pm**

All ages and experience levels welcome. Light refreshments at the break. New dancer class at 7:30. Members \$8. Non-members \$9. Students \$4. **Info: [www.harrisburgcontra.org](http://www.harrisburgcontra.org)**

#### March

- 12 **Don Flaherty** calling with *Contra Rebels*
- 26 **Terry Bachmann** calling to *Fingerpyx*

*Saturdays*

#### Elverson Dance • Elverson, PA **Saturday, March 6 • 7:30-10:30 pm**

Check website for info. St. Mary's Episcopal Church, 61 Morningside Drive, \$8, \$5 students/seniors. New dancers welcome. Bring soft-soled shoes and a snack to share at the break. Smoke & alcohol free. Beginners lesson at 7. Children must be chaperoned. **Info: Nancy Katzen, 610.780.5667 or [elversoncontra.org](http://elversoncontra.org)**

#### Shepherdstown Dance • Shepherdstown, WV **Saturday, March 6 • 7:30-11 pm**

**March 6.** **Ted Hodapp** calls a lively selection of contra dances to the music of *Contratopia*. Held at the War Memorial Building. Beginners workshop at 7:30, dance starts at 8 pm. All levels welcome, no partners needed. Please wear clean, soft-soled shoes to protect

## Dances continued

the floor. \$10 adults, \$7 SMD members, \$4 dancers under 12. **Info:** [www.smad.us](http://www.smad.us).

### Baltimore Dance • Pikesville, MD *Saturday, March 13 • 6:30-11*

Dave Colestock will call to *Gypsy Meltdown*. The family dance is from 5-6:30, potluck from 6:30-7:30, contradance refresher lesson at 7:30, and the evening dance begins at 8:00. **For more info, call BFMS at 888.646.BFMS, or Becca at 301.606.7115, or [nutritionexpeditions@yahoo.com](mailto:nutritionexpeditions@yahoo.com).** Held at St Marks on the Hill, 1620 Reisterstown Road. See website for prices for families, individuals, students, members and nonmembers, for either or both events ranging from \$5 to \$28.00

### Reston Dance • Reston, VA *Saturday, March 13 • 8-10:45 pm*

Janine Smith will call to the music of the *June Apple Band* and will include a couple of old chestnuts at this, the last of five winter dances. Beginners' workshop 7:15-8, dance 8-10:45. Admission: \$8 (workshop free). Partner not necessary. Snacks to share are encouraged (juice provided). Reston Community Center, 2310 Colts Neck Rd, Reston, VA, **\*SET BACK ON THE PLAZA BEHIND THE SAFEWAY PARKING LOT\*** in the Hunters Woods Shopping Center. **Dance info: 703-709-9121. or [anote20@gmail.com](mailto:anote20@gmail.com)**

### SMTMD Dance • California, MD *Saturday, March 13 • 7-10 pm*

Live music by *The Open Band* and caller TBA. St. Andrew's Church Parish Hall, 44078 St. Andrew's Church Rd. Beginners instruction at 7, dance from 7:30-10:30. Wear floor-friendly non-scuffing shoes. \$6 for SMTMD member, \$8 for non-members. 12 and under free. **Info:** [www.smtmd.org](http://www.smtmd.org) or 301.769.4762.

### Annapolis Contra and Square Dance • Annapolis, MD *Saturday, March 20 • 7-10 pm*

Beth Molaro calls to the music of the *Laura and the Lava Lamps*. Free introductory session at 6:30 pm. All dances taught and walked through. All ages welcome. \$10 with discounts for seniors, students, families and members of Annapolis Traditional Dance Society (ATDS). Snacks to share at the break are welcome! Friends Meeting Hall, 351 DuBois Rd. **Info: Jan Scopel at 443.540.0867, [janscope@hotmail.com](mailto:janscope@hotmail.com) or [www.contradancers.com/atds](http://www.contradancers.com/atds)**

### Lancaster Contra Dance • Lancaster, PA *Saturday, March 20 • 8-11 pm*

Susan Taylor calling to *June Apple Band*. St. Johns Episcopal Church, 321 W. Chestnut St. Beginners workshop 7:15 pm. Dance 8-11 pm. \$8/\$5. **Info: Shane 717.431.7417 or <http://www.lancastercontra.org>.**

### Frederick Contra Dance • Frederick, MD *Saturday, March 27 • 8-11 m*

Local favorite, Steve Gester calls to the *Mortal Wombat*. Trinity School, near Harry Grove Stadium. Free beginners' workshop at 7 pm, dance begins at 8. Adults, \$9, students \$5, 12 and under \$4. **Info/directions: [www.contradancers.com](http://www.contradancers.com) or call Boe Walker at 301.694.6794.**

## English Country

*Mondays*

### Baltimore Folk Music Society • Pikesville, MD *Mondays • 8-10:30 pm*

English Country Dancing is lively movement to elegant music in a friendly informal setting. All dances are taught and walked through. New dancer orientation first Wednesday at 7:45. Admission \$7 Members, \$10 Non-members, \$2 student discount. St. Mark's on the Hill Parish Hall, 1620 Reisterstown Rd, 0.5 miles from Balt. Beltway Exit 20 South. **Info: Carl Friedman at 410.321.841 or [engdance@bfms.org](mailto:engdance@bfms.org)**

#### March

- 1 Caller Tom Spilsbury with Becky Ross, Robin Wilson, and Liz Donaldson
- 8 Caller Carl Friedman with Dave Crandall, Paul Oorts, and Jonathan Jensen
- 15 Caller Diane Schmit with Jeff Steinberg, Barbara Gorin, and Judy Meyers
- 22 Caller Sharon McKinley with Marty Taylor, Karin Loya, and Judy Meyers
- 29 Caller Michael Barraclough with Carl Friedman, Robin Wilson, and Michael Friedman

### The FSGW English County Dances are listed on Page 4

*Saturdays*

### Patriots Ball • Alexandria, VA *Saturday, March 6 • 7-10 pm*

Beverly Francis of New York will teach and lead an afternoon workshop and evening ball featuring English country dances of the American colonial era. Becky Ross, Anna Rain, and Harriet Kaplan will provide the music. To be held at historic Gadsby's Tavern in Old Town. The workshop will be at the McLean Community Center from 12:30-4 pm. The event is sponsored by Project Enlightenment, the 18th century reenactment society of McLean High School. **Contact Laura Schultz at [laschultz@comcast.net](mailto:laschultz@comcast.net) or 703.282.1444 for details and registration.**



**Dances continued****English Country Dance • Silver Spring, MD**  
**Saturday, March 13, 8-10:45**

GlenHavenElementarySchool, 10900InwoodAvenue. (Entrance and parking in rear) Dance to festive music by *Peascods Gathering*, calling by **Barbara Harding** and **Bob Farrall**. Beginners and singles welcome. \$5. **Info: Carl Minkus 301.493.6281, (cminkus@verizon.net), or Bob Farrall at 301.577.5018.**

**Mary Baldwin Ball • Staunton, VA**  
**Saturday, March 27 • 7 pm**

"Dancing with the feet is one thing, but dancing with the heart is another."— Unknown. Come join us at Mary Baldwin College for our annual Mary Baldwin Ball. Dances will be chosen from the George Washington Ball from Williamsburg. **For further information, email Irene Sarnelle at isarnelle@mbc.edu.**

**International***Mondays***Alpine Dancers • New Carrollton, MD**  
**Mondays, March 22 & 29 • 4-6:30 pm**

Looking for energetic beginners. Free, open practice at New Carrollton Municipal Center, 6016 Princess Garden Pkwy. Graceful and lively couples and trio figure dances from Austria, Germany, and Switzerland. Recorded music. **Info/dir: caroltraxler@yahoo.com, 301.577.3503, www.alpinedancers.org**

**Bethesda International Folk Dancers**  
**• Bethesda, MD****Mondays • 7:30-10 pm**

No partner necessary, all ages and levels of expertise welcome. Beginners: 7:30-8:10. Intermediate/Adv: 8:10-10pm. Mostly recorded with occasional live music. Beautiful wood floor. Held at the Lawton (formerly Leland) Center, 4301 Willow Ln. Classes here require registration with Montgomery County. Forms available at the class. \$7 per class. **Info: Phyllis or Brandon Diamond at 301.871.8788, www.diamonddancecircle.com, or diamonddancecircle@comcast.net**

*Tuesdays***Arlington International Folk Dancing**  
**• Arlington, VA****Tuesdays • 8-10 pm**

Key Elementary School, Veitch St., between Wilson and Key near Courthouse Road Metro. Folk Dance for Fun. Admission \$5, recorded music, instruction, walk-throughs, and requests. Singles welcome, all ages or levels of expertise. **Info: Sam or Sarah 703.527.8998 or sstulberg@earthlink.net or Kent Hibben at 301.520.3794 or KentLHibben@hughes.net**

*Wednesdays***Columbia International Folk Dancing**  
**• Columbia, MD****Wednesdays, • 8-10:30**

Meetings are from 8-10:30 at Kahler Hall with dancing at 8:30. Cost: \$5, Senior, \$3. **Info: Ethel at 410.997.1613, or Ed at 410.740.2309. www.columbiafolk dancers.org**

*Thursdays***The Glen Echo International Folkdancers**  
**are listed on page 7.****Chevy Chase International Folk Dancers**  
**• Washington, DC****Thursdays • 7:30-9:30 pm**

Chevy Chase Community Center, 5601 Connecticut, NW (at McKinley). Instruction and walk-through until 8:30. All levels welcome, no partner necessary. Recorded music. Leader: **Roland Forbes. For info: Naomi Rogers at 301.438.0063**

**Circle Dance • Arlington, VA****Thursdays • 7:45-9:45 pm**

Come and explore dances from all over the world in a spirit of meditation and joy. All dances are taught. Recorded music. Unitarian Universalist Church of Arlington, corners of Rte 50 at George Mason Dr. Donation requested. **Info: Judie David at 703.451.2595 or Vedavid@starpower.net.**

**Mount Vernon International Folk Dancing**  
**• Alexandria, VA****Thursdays • 8-10 pm**

Beginners to advanced - all are welcome! Easy dances 8-8:30, followed by requests and advanced instruction. Join our friendly, diverse group on a beautiful dance floor. No partner necessary. Donation \$2.50. Mt Vernon Unitarian Church, 1909 Windmill Lane. **Info: 703.866.2393 or kkrogh@aol.com**

*Fridays***Greenbelt International Folk Dancing**  
**• Greenbelt, MD****Fridays • 8:15-10:45 pm**

Greenbelt Community Center Dance Studio, 15 Crescent Rd. Focus is dance from Eastern Europe and Scandinavia. No partner or experience necessary. Beautiful dance floor. Teaching 8:15-9, requests from 9-10:45. \$7; \$10 on 1st Fridays (live music). **Info: Larry Weiner at 301.565.0539, larry@larryweiner.com**

## Dances continued

### Irish

#### CCE Monthly Ceili • Great Falls, VA

A Ceili will be held in the Great Falls Grange in March. Check the website for dates. 9819 Georgetown Pike. Dance programs, directions, and updates at [www.ccepotomac.org](http://www.ccepotomac.org), or call Kendra Swann at 703.490.5207.

#### GWCC Monthly Ceili • College Park, MD March 28 • 4–9 pm

4th Sunday dances. Cherry Hill Conference Center, 9700 Cherry Hill Road (punch entrance code 76000 at the gate). GWCC Members \$12, Non-members \$15, Info: 301.294.3568.

### Israeli

#### Israeli Dancing • Potomac, MD Wednesdays, • 8:15–10 pm

Har Shalom Congregation, 11510 Falls Rd., Potomac (between Democracy Blvd. and Montrose Rd.). "Oldies" only (dances before 1990). Instruction 8:15-8:45, Requests 8:45-10. Recorded Music. \$5. Info: Ben Hole 301.441.8213.

#### Israeli Dancing • Potomac, MD Saturday, March 6 • 8:15–11 pm

Israeli "Oldies" party (dances before 1990). Recorded music, light refreshments. Greenbelt Community Center, 15 Crescent Road. \$5. Info: Ben Hole, 301.441.8213

### Morris

#### Arlington Northwest Morris • Arlington, VA Mondays • 7:30–9 pm

Learn and perform the traditional Morris dances of Northwest England which combine simple footwork with power and precision. We are a welcoming group of women who practice in a great place with a wooden floor (easier on your knees) at the Unitarian Universalist Church. Info: [suzelise@comcast.net](mailto:suzelise@comcast.net) or [nwdancers@comcast.net](mailto:nwdancers@comcast.net)

#### Rock Creek Morris Women • Silver Spring, MD Wednesdays • 7:45–9:45 pm

Learn to dance in the ancient English Morris tradition, and you'll get all the aerobics you need. Join a strong community that dances, plays, sings, and drinks together. Montgomery Knolls Elementary School, 807 Daleview Dr. Info: 301.927.6373, [louiseneu@earthlink.net](mailto:louiseneu@earthlink.net) or [www.uswet.com/RCMW.html](http://www.uswet.com/RCMW.html)



#### Foggy Bottom Morris Men • Silver Spring, MD Thursdays • 8–10 pm

Experience the vigorous thrill of the Morris and the camaraderie of a Morris team! Learn and perform dances from English Cotswold villages, Mummer's Plays and occasional long-sword dances. We welcome new and slightly used dancers to our practices at Highland View Elementary School, 9010 Providence Ave and/or at the pub afterwards. [squire@fbmm.org](mailto:squire@fbmm.org), Andrew Marcus 617.721.0146, [www.fbmm.org](http://www.fbmm.org)

### Scandinavian

#### Norwegian Dance & Potluck • Takoma Park, MD Saturday, March 6 • Potluck 6:30, Dancing 8 pm

Bring clean shoes to wear, food to share and \$\$ you can spare. Mesmerizing live music by hostess Loretta Kelly on the Hardanger fiddle. Possible pre-potluck TELESRINGAR DANCE CLASS. Beginners welcome. Info/dirs: [www.mandfanitull.org](http://www.mandfanitull.org) or Jenny Foster at 301.371.4312, or [pi@xecu.net](mailto:pi@xecu.net).

#### Scandinavian Dance • Greenbelt, MD Saturday, March 20 • 7–10 pm

Scandia DC sponsors a 3rd Saturday dance, this month featuring fiddler Goran Olsson and the *Scandia DC Spelmannslag*. There may be some recorded music. Lesson from 7-8: *Hambopolska* from *Follinge* — a favorite Swedish dance from the Northern Sweden where Goran is from. Karen Myers will play for the teaching. Greenbelt Community Center Dance Studio (wood floor) at 15 Crescent Rd. \$7 Info: 202.333.2826, inclement weather call 301.474.0646. Info: [linda@scandiadc.org](mailto:linda@scandiadc.org), or [www.scandiadc.org](http://www.scandiadc.org).

### Scottish

#### Scottish Dance Party • Bethesda, MD Saturday, March 27 • 2–5 pm

Celebrate Spring with a Scottish Dance Party lead by Elke Baker to the music of the *Potomac Valley Scottish Fiddle Club Band* lead by Becky Ross. Free to Glen Echo residents; \$10-others. Info: Becky Ross, 301.208.8285, or [BeckyRoss@PeatAndBarley.com](mailto:BeckyRoss@PeatAndBarley.com).

#### Scottish Country Dance • Bethesda, MD Mondays • 8–10 pm

NIH Building T-39 (Dance and Aerobic Center). \$5 Call/email in advance for directions. Info: John MacLeod, 301.622.5945 or [blackolav@cs.com](mailto:blackolav@cs.com)

#### Scottish Country Dance • Greenbelt, MD Tuesdays • 8–10 pm

Dance all year round at the Greenbelt Community Center \$5 Info: [www.rscds.greaterdc.org](http://www.rscds.greaterdc.org) or Jay Andrews at [andrewj@erols.com](mailto:andrewj@erols.com) or 703.719.0596

## Dances continued

### Scottish Country Dance • Alexandria, VA Wednesdays • 8–9:45 pm

Learn Scottish dance at the Durant Center, 1605 Cameron St. \$5 Info: Carol Porter, 703.379.5779 or nova-secretary@rscds-greaterdc.org

### Swing/Blues

### Slow Blues Dance and Lesson • Glen Echo, MD Thursdays, March 4, 11, 18, 25 • 8:15–11:30 pm

Thursday night Blues Dance in the “back room”. Come early as it is selling out. Beginner lesson at 8:15-9, Presented by Capital Blues. DJ Mike Marcotte and guests play incredible blues from 9 to 11:30 pm. Admission is \$8 for lesson and dance. Sprung solid maple floor, plus heating and air conditioning! Info: Donna Barker at 301.634.2231 or 301.634.2222 or www.CapitalBlues.org

### Washington Swing Dance • Glen Echo Park, MD Saturday, March 6 • 8–MN

Music by *Augie Swing*. No partner or experience necessary. All ages welcome. Introductory lesson from 8-9 in the Spanish Ballroom at Glen Echo Park. Admission \$14. Info: 301.340.9732 or wsdcswings@yahoo.com

### Slow Blues and Swing • Glen Echo Park, MD Sunday, March 14 • 7–11 pm

Sunday Blues dance in the Back Room featuring a band to be determined. There is an optional 1½ hour workshop, taught by Donna Barker and Mike Marcotte, from 7-8:30 pm. Dance slow blues and swing from 8:30-11 pm. Cost \$17 for the workshop and dance or \$12 for the dance only. Info: Donna Barker at 301.634.2231, or Glen Echo Park at 301.644.2222, or www.DanceDC.com.

### Waltz and Tea Dance

### Afternoon Waltz • Glen Echo Park, MD Sunday, March 7 • 3–6 pm

Dance to the music of *Contratopia* in the Spanish Ballroom. They'll play a lively mix of folk waltzes, Hambo, Schottische, Swing, Tango, and Polka. The fun begins at 3 pm with a half-hour introductory waltz lesson followed by 2½ hours of social dancing. \$8. No partner required. For info: www.WaltzTimeDances.org or call Glen Echo Park at 301-634-2222.

### Afternoon Waltz • Glen Echo Park, MD Sunday, March 21 • 3–6 pm

Laura and the Lava Lamps provides the music for an afternoon of couples dances and folk waltzes. Dance the Hambo, Schottische, Swing, Tango, and Polka. 30 minute introductory waltz lesson at 3pm followed by 2½ hours of social dancing. Admission is \$8. No partner required. For info: go to www.WaltzTimeDances.org, or call Glen Echo Park at 301-634-2222.

### Zydeco/Cajun

### Zydeco Dance • Glen Echo Park, MD Sunday, March 14 • 3–6 pm

Zydeco dance party in the Spanish Ballroom featuring *River City Slim and the Zydeco Hogs*. The 30 minute Zydeco dance lesson given by Michael Hart and Sharon Schiliro begins at 3 pm with dancing from 3:30-6 pm. Admission is \$15. No partner required.

### Cajun/Zydeco • Glen Echo Park, MD Friday, March 26 • 8 pm–Midnight

Join us for a Zydeco dance in the Bumper Car Pavilion. The 60 minute zydeco lesson given by Michael Hart and Sharon Schiliro begins at 8 pm with dancing to midnight to the music of *Nathan and the Zydeco Cha Chas*. Admission is \$20. No partner required. For more info: www.dancingbythebayou.com or call Michael Hart at 301.762.6730.

## Dance Classes

### Zwiefacher Dance Classes • Bethesda, MD Tuesdays • 7:30 – 9:30 pm

Class: March 16  
Party: March 23

The class will teach the basic turns and patterns of this fun couple turning dance. The party is open to anybody, not just class attendees. Wear smooth-soled shoes for turning, not running shoes. \$5. Info: Lisa Brooks at 240.731.1935, lisa@HamboDC.org, or www.HamboDC.org.

**Directions:** Enter NIH at Wisconsin Av. and the new Gateway Drive Visitor Entrance (south of South Dr., reachable ONLY from the north on Wisconsin Av.). Park there, or drive to the south center of NIH and park in NIH permit parking next to Building T-39. Or walk 12 minutes from the Medical Center metro stop. See map at www.HamboDC.org.

### Scandinavian Dance Classes • Bethesda, MD Tuesdays • 7:30 – 9:30 pm

Beginners Class: March 16 (Zwiefacher), 30  
Advanced Class: March 2, 9  
Zwiefacher Party: March 23

Beginners learn Hambo, Schottish, Waltz, Zwiefacher, and other couple turning dances. Advanced dancers learn *Boda, Orsa, Föllinge, Gothenburg Mazurka, Finnskogspols, Nigpolska, Gammalvånster, Telespringar*, and requests. Sometimes live Swedish music. Wear smooth-soled shoes for turning, not running shoes. \$5. Info: Lisa Brooks at 240.731.1935, lisa@HamboDC.org, or www.HamboDC.org. Directions listed under Zwiefacher dance classes to the left.

# Jams/Open Mics/Audience Participation

*Listed by day of the week*

*(Sunday through Saturday)*

*Sundays*

## Scottish Traditional Music Jam • Wheaton, MD *1st Sundays • 3-6 pm*

Scottish traditional music jam, first Sundays, Royal Mile Pub, 2407 Price Avenue. Musicians welcome. Info: <http://dcscottishsession.blogspot.com/> or contact Peter Walker at [boghadubh@gmail.com](mailto:boghadubh@gmail.com).

## More Geese Than Swans • Washington, DC *1st Sundays • 7 pm*

More Geese Than Swans meets on 1st Sundays to sing Renaissance choral music, sacred and secular. Some sight-reading skills necessary. Group meets near a Metro stop and welcomes new members. Info: Joan Gildemeister at [jgildemeister@cs.com](mailto:jgildemeister@cs.com).

## CABOMA Jam • Arlington, VA *2nd and 4th Sundays • 2 pm*

Capitol Area Bluegrass and Old-Time Music Association (CABOMA) holds jams the 2nd and 4th Sundays of each month. Lyon Park Community Center, corner of N. Filmore and Pershing. Info: Dave at 301.274.3441.

## Annapolis Acoustic Jam • Annapolis, MD *Sundays • 9 am-Noon*

Indoors at The Visitor Center, Quiet Waters Park. Info: [phyllis@saroffillustration.com](mailto:phyllis@saroffillustration.com).

*Mondays*

## Balkan Singing • Takoma Park, MD *Every Monday • 8 pm*

Informal singing group, Sedenka, meets in Northwest DC/Takoma Park to sing Balkan village songs. Interested novices welcome. Info: Katya, 301.270.4175 or Katya at [partan.com](http://partan.com) or Joan at 202.363.6197.

## DC Bluegrass Union VFW Bluegrass Jams • Takoma Park, MD *1st & 3rd Mondays • 7-10 pm*

Free. Non-smoking. At Veterans of Foreign Wars Post 350, 6420 Orchard Ave. (corner of 4th Ave), near New Hampshire and Eastern. Info: VFW Post 350 at 301.270.8008 or Barb Diederich [barb@barb-diederich.com](mailto:barb@barb-diederich.com).

*Tuesday*

## Sea Chantey Open Pub Sing • Wheaton, MD and Washington, DC

*1st and 4th Tuesdays • 8 pm*

*The Ship's Company* chanteymen host open mike sea chantey sings. No cover/minimum; arrive early for a table. Participation encouraged but not mandatory. Requests are honored if possible. Mostly a cappella but instruments are welcome. Info: Myron Peterson at [rustic@yahoo.com](mailto:rustic@yahoo.com) or [www.shipscompany.org](http://www.shipscompany.org).

**1st Tuesdays** – At Royal Mile Pub, 2407 Price Avenue, Wheaton. 8 pm

**4th Tuesdays** – Laughing Man Tavern, 1306 G St NW, DC (across 13th St from Metro Center station). 8 pm

## Folk Club of Reston/Herndon • Herndon, VA *Tuesdays • 7:30 pm*

Tortilla Factory, 648 Elden Street. Open mic format. 2nd Tuesday includes 25-minute member showcase; monthly concerts usually 3rd Tuesday, price varies. Smoke-free environment. Info: [www.restonherndonfolkclub.com](http://www.restonherndonfolkclub.com), 703.435.2402.

## Cajun Jam • Greenbelt, MD *4th Tuesdays • 6-9 pm*

Monthly open Cajun jam and dance. New Deal Café, 113 Centerway, Roosevelt Center. More info: 301.474.5642 or [www.newdealcafe.com](http://www.newdealcafe.com). Check website to confirm.

*Wednesdays*

## Sea Chantey Open Pub Sings • Baltimore and Annapolis, MD

*2nd & 3rd Wednesdays • 8 pm*

*The Ship's Company* chanteymen host open-mike sea chantey sings. Participation encouraged but not mandatory. Requests are honored if possible. Info: Myron Peterson at [ructic@yahoo.com](mailto:ructic@yahoo.com) or [www.shipscompany.org](http://www.shipscompany.org)

**2nd Wednesdays** – Wharf Rat, 801 S. Anne Street, Baltimore (Fells Point)

**3rd Wednesdays** – Galway Bay, 63 Maryland Ave, Annapolis 21401

## Arlington Jam! • Arlington, VA *3rd Wednesdays • 7-10:30 pm*

Fiddles, guitars, all instruments welcome! Intermediate and advanced players interested in old-time, blues, Scandinavian, swing, and other styles. First Friday and third Wednesday at 1909 N. Ohio St. Info: Lilli Vincenz, 703.532.2731 or [FiddlerLilli@zzapp.org](mailto:FiddlerLilli@zzapp.org).

**Jams/Opem Mics/Audience Participation continued**

*Thursdays*

**Irish Traditional/Bluegrass Music Sessions • Frederick, MD**

**Thursdays • 7 and 8:30 pm**

At Boe's Strings, 26 S. Market Street. Info and tune list at [www.BoesStrings.com](http://www.BoesStrings.com) or Boe at 301.662.0750.

*Fridays*

**Arlington Jam! • Arlington, VA**

**1st Fridays • 7-10:30 pm**

See Wednesday listing.

**Glen Echo Open Band • Glen Echo, MD**

**2nd Fridays • 8:30-11:30 pm**

The fabulous Glen Echo Open Band plays for the second Friday contra dance. All instruments and levels of ability are welcome. Find recordings, tune-book names and page numbers of tunes played by the Open Band at [www.openbandonline.com](http://www.openbandonline.com). The site works best using iTunes on a PC or a Mac. Info: [www.fridaynightdance.org](http://www.fridaynightdance.org).

**Open Mic at Potter's House • Washington, DC**

**4th Fridays • 8 pm**

Both spoken word and music. Homemade dinner/desserts served starting at 7. Potter's House 1658 Columbia Road NW (Green line to Columbia Hgts). Info: [www.PottersHouseDC.org](http://www.PottersHouseDC.org).



Archie Edwards

*Saturdays*

**Archie Edwards Blues Jam • Riverdale, MD**

**Saturdays • 1-5 pm**

The Archie Edwards Blues Heritage Foundation is pleased to announce the resumption of weekly Saturday afternoon blues jams. All skill levels welcome. Note the new location: 4701 Queensbury Rd, across the street from the Riverdale MARC train station, a few blocks east of Rte 1. Ample parking. Free, but donations welcome. Info/confirmation: 202.526.7539 or [www.acousticblues.com](http://www.acousticblues.com)

**Hammer Dulcimer Jam • Annandale, VA**

**March 27 • 1:30 - 4:30 pm**

Hammer dulcimer players meet monthly to swap tunes and play together. Other acoustic instruments welcome. Meeting this month is at the George Mason Regional Library, 7001 Little River Turnpike, Annandale, VA 22003 703.256.3800 Info: Ellie at 703.578.3106 <http://pages.prodigy.net/holsopple>

**Storytelling**

**Kensington Row Story Salon • Kensington, MD**

**Wednesday, March 3 • 7:30-9:30 pm**

Susannah Holstein and Ellouise Schoettler show that storytelling is not just for kids. Presentation followed by open mic, 6 minute limit. Free. To get on the open mic, contact [elloisestory@aol.com](mailto:elloisestory@aol.com). Kensington Row Bookshop, 3786 Howard Avenue, 20895 • 301.949.9416.

**Telling Moments Storytelling Theater Opening • Takoma Park, MD**

**Saturday, March 20 • 7:30 pm**

After two years in the planning, Telling Moments Storytelling Theater, a 501c3 non-profit will officially open. The theatre debuts with master storyteller Jon Spelman's program, "Four Score and More: Stories from Abe to Will"—tales by, about and in-relation-to some

of our greatest writers. Abe Lincoln about Abe Lincoln; Leo Tolstoy about Abe Lincoln; Will Shakespeare on Life, Love, and Growing Older; Jon Spelman about Will Shakespeare; Mary Shelley on Frankenstein's Creature, and much more. To reserve tickets, email [telmoment@verizon.net](mailto:telmoment@verizon.net), or go to <https://telling-moments.ticketleap.com>. For more info call Linda Fang at 301.838.9614.

**4th at 4 Storytelling • Lutherville, MD**

**Sunday, March 28, • 4-6 pm**

We meet from 4-6 and welcome newcomers to our story swap group. Pot luck refreshments at the break. Towson Unitarian Church, 1710 Dulaney Valley Road, 21093. To confirm this months meeting is taking place, first call: Diane at 410.321.8419



# Workshops, Weekends, Festivals & Special Events

## Andy Cohen Guitar Workshop • Riverdale, MD Sunday, March 14 • 2 pm

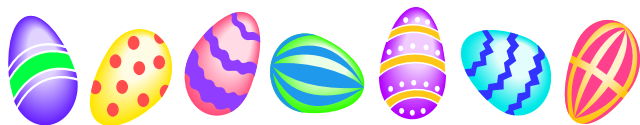
Andy will offer a two hour workshop at the Archie Edwards Blues Barbershop, 4701 Queensbury Road. This session will include thumb control, working up and down the neck, rhythms, neck tricks, and different kinds of right hand finger strokes. At the end of the session all of these techniques will be applied to learning a song, and Andy will also teach participants how to flip the guitar in mid-air without missing a note. For more info: [www.acousticblues.com](http://www.acousticblues.com)

## Upper Potomac Spring Music Weekend • Shepherdstown, WV Friday, March 19–Sunday, March 21

This weekend retreat combines workshops for hammered dulcimer, fiddle and mixed instruments and features a special Acadian flavor reflecting our special guests, **Gadelle**, from Prince Edward Island. Staff includes **Cindy Ribet** (beginning hammered dulcimer), **Ken Kolodner** (intermediate hammered dulcimer), and **Dan Landrum** for advanced students. **Lisa Malyuk** (Fiddle Basics; Know your Bow), **Louise Arsenault** (Acadian fiddle), and **Helene Bergeron-Arsenault**. All classes are held in the relaxed atmosphere of the Shepherd University. Rental hammered dulcimers are available for new players. For more information, see the webpage at [www.smad.us/dulcimerfest](http://www.smad.us/dulcimerfest), call Joanie Blanton) 304.263.2531 or email [updf@earthlink.net](mailto:updf@earthlink.net) Now payable by PayPal.

## 27th Annual Pysanka Workshop • Washington, DC Sunday, March 21 • 1–5 pm

Conducted since 1983 by **Jurij Dobczansky**, this workshop begins with a slide show that explains some of the symbolism and a step-by-step overview of the



pysanka-making process. A small kit, which includes a kystka (stylus), beeswax and suggested designs is yours to take home. You will be provided with eggs, candles, and dyes.

Call the Shrine at 202.526.3737 to register. \$15 adults, \$10 children 12 and under. Payment can be made on-site. Catholic National Shrine of the Holy Family. 4250 Harewood Rd, NE (across from Catholic University).

## GWCC Ceili Weekend • Shepherdstown, WV Friday, March 26–Sunday, March 28

Two set dance workshops with **Jim Keenan** instructing. Event package is \$60.00 and there are two different bands. For more information, call Dixie at 301.294.3568 or go to [www.gwcc-online.org](http://www.gwcc-online.org)

## American Banjo Fraternity Rally • Williamsport, PA

May 20–22, 2010

Players and listeners are invited to the **Spring Rally** and free performance of 1900's music at the Genetti Hotel, 200 West Fourth St., 1.800.321.1388. A concert will take place at 7:30 May 22, featuring solo and group performances on five string banjos of different sizes using nylon strings and bare fingers, no picks. This was the primary form of urban banjo playing in the 1900's. For further info: [www.abfbanjo.org](http://www.abfbanjo.org).

## Scottish Folksong Tour • Scotland

June 13–23, 2010

Spend 10 days traveling through Scotland with **Ed Miller**, a noted folk singer who will share his friends, country, humor, and knowledge with you "on location." Hear border ballads in a 16th century castle, dance to the fiddle of **Iain Fraser**, sing sea songs in Pittenweem harbor, and have many more unique and musical experiences. For details, pricing and an application download information at [www.songsofscotland.com](http://www.songsofscotland.com).

## THANK YOU, MINIFEST VOLUNTEERS

FSGW wholeheartedly thanks the team of volunteers who spent hours planning the 2010 Midwinter Festival, sadly cancelled due to snow on February 6. **April Blum**, coordinating the event, and **Charlie Baum**, who planned the wonderful evening concert deserve a huge hand. And more applause is due programmers **Linda Goodman**, **David Shewmaker**, **Charlie Pilzer**, **Tom Livengood**, **Lisa Null**, and **Scott Prouty**, as well as **Leonard Lu**, who lined up volunteers. Also, a big thank you goes out to everyone who had agreed to perform and to all the logistics volunteers.

Despite their immense disappointment, we are happy to report the planning committee is back at work for next year's event, and in fact reports that an all-day percussion track is in the works. The beat goes on!

# C L A S S I F I E D S

**Editorial Policy for Classified Ads:** Only FSGW members may place an ad. Ads may be up to 50 words, including telephone number with area code. There is a limit of two ads per member per issue. Ads **MUST** be relevant to FSGW's stated purpose (see Editorial policy below). Charges: Commercial business: \$8 for 10 words; Non-commercial and individual \$4 for 10 words; 25% discount for any single ad placed in 11 consecutive issues (one year) and paid in advance. LOST & FOUND ads are FREE. Ad copy, with check made payable to FSGW must be received by the newsletter deadline. **Mail to the Editor: Roxanne Watts, 12190 Abington Hall Place, #202 / Reston, VA 20190**

**DANCE ART** of contra, swing, tango, flamenco, and more in oil, pastel, watercolor, etching, and giclee print mediums. Websites: [www.briankeeler.com/gallery.php](http://www.briankeeler.com/gallery.php) and select Dance Images; and [www.tangomyheart.com](http://www.tangomyheart.com) Can be viewed in DC area on Loughboro Rd, NW (across from Sibley Hospital), by appointment or at next open house, Sunday Mar 21, 1-4 pm. RSVP appreciated. **Contact Linda Graves: 202.468.2303, or ladyloveart@gmail.com**

## FSGW Newsletter Editorial Policy

The Folklore Society of Greater Washington endeavors to print copy it deems relevant to its membership and purpose as stated in its by-laws:

*"The main purpose of the Society is to further the understanding, investigation, appreciation, and performance of the traditional folk music and folklore of the American people."*

- All copy (except classified ads) must be submitted by e-mail to [newsletter@fsgw.org](mailto:newsletter@fsgw.org) in text format in the body of the email by the 10th of the preceding month.
- Please review comparable entries from the Newsletter and edit accordingly.
- The Editor reserves the right to edit or omit copy as necessary.

**Editor: Roxanne Watts • [newsletter@fsgw.org](mailto:newsletter@fsgw.org) • 703-618-1799**

**Design & Layout: Jennifer Woods GRAPHICS • Silver Spring, MD • 301-587-7174**

## Driving & Mass Transit Directions to Frequent Venues:

### Glen Echo Park, MD • Spanish Ballroom/Bumper Car Pavilion

7300 MacArthur Blvd. At Goldsboro Rd., Glen Echo, MD

FROM THE BELTWAY:

**Maryland Side:** at 2-lane Exit 40 take the left fork for the Cabin John Parkway. Where Cabin John merges with the Clara Barton Parkway, move into the left lane, under the overhang. Then follow instructions in MD&VA, below.

**Virginia side:** Get into the far right hand lane at the top of the bridge. At the first fork, bear right. Stay in the left lane; watch for Cabin John traffic merging from the right at the overhang. Then follow instructions in MD&VA, below.

**MD&VA:** Watch for signs to MacArthur Blvd. Make a very sharp hairpin turn and move immediately into the right lane. At the T intersection/stop sign, turn left onto MacArthur Blvd. The Upper parking lot is on the left. For the lower parking lot, go around the small traffic circle and make the first left onto Oxford St. Be SURE to come to a COMPLETE STOP at the Stop Sign!!!!

**BY PUBLIC TRANSPORTATION:** Take the #29 Bus from the Friendship Heights Metro Station. Ask the driver to let you know when to get off for Glen Echo Park. The bus stops running before the last dance ends. Ask the dance coordinator to announce that you need a ride. We've never left anybody at the Park. Last bus leaves Friendship Heights Metro at 7:30 pm.

### Glen Echo Town Hall

6106 Harvard St., Glen Echo, MD:

Same as for Glen Echo Park, save that Harvard Street is the THIRD left off of MacArthur Blvd. After the traffic circle.

**PLEASE NOTE:** Park in the lot behind the hall, on University Drive, or on the east side of MacArthur Blvd, **NOT** on Harvard St.

### Washington Ethical Society (WES) Auditorium,

7750 16<sup>th</sup> St. NW, DC just south of the intersection of Kalmia Rd. and 16<sup>th</sup> St, about four blocks inside the DC/MD line.

FROM THE BELTWAY:

Take the Georgia Ave. (Rt. 97) South exit (31 south). Stay in either right line. Go .4 miles from the exit ramp, going south on 16<sup>th</sup> St. South. Follow 16<sup>th</sup> Street past the light at East-West Highway (Rt. 410); go straight at the circle at the DC/MD line. Kalmia Rd. is the second light after the DC/MD line. WES is the second building on the right after Kalmia Rd. Parking is on Kalmia or 16<sup>th</sup> St.

**By METRO:** Red Line to Silver Spring Stop. Walk south on Rt. 29 Colesville Rd. to the traffic circle at 16<sup>th</sup> – go left down 16<sup>th</sup> four blocks to Kalmia Rd. and WES. If you'd rather not walk, an S-4 Metro Bus will deliver you to the corner of Kalmia Rd. and 16<sup>th</sup>.



# Folklore Society of Greater Washington

6 Sunnyside Road • Silver Spring, Maryland 20910  
[www.fsgw.org](http://www.fsgw.org)

PRESORTED  
FIRST CLASS MAIL  
US POSTAGE PAID  
ROCKVILLE, MD  
PERMIT #4297

Printed on recycled paper.

Address Service Requested

 FIRST CLASS

<p>The Folklore Society of Greater Washington is a not-for-profit [Section 501(C)(3) of the IRS code] institution and we encourage the financial contributions of our members. Contributions in excess of annual dues are welcome and may be tax deductible. Please mail your gift to FSGW, c/o Jerry Stein, 3612 Greenway Place, Alexandria, VA 22302-2005. Subscriptions to the Newsletter are only available outside the Greater Washington Metro area.</p>	<p><b>FSGW IS DEDICATED TO PRESERVING AND PROMOTING TRADITIONAL FOLK ARTS IN THE WASHINGTON, DC METROPOLITAN AREA. MEMBERSHIP IS OPEN TO ALL WHO SUPPORT THESE GOALS UPON PAYMENT OF ANNUAL DUES.</b></p>
--	---

## FSGW Membership Form

- RENEWAL     NEW ADDRESS     NEW MEMBERSHIP\*  
 I WANT ONLY THE ELECTRONIC COPY OF THE NEWSLETTER  
 (NO PAPER COPY SENT)

	INDIVIDUAL	FAMILY
1 year	<input type="checkbox"/> \$33	<input type="checkbox"/> \$45
2 years	<input type="checkbox"/> \$62	<input type="checkbox"/> \$85
3 years	<input type="checkbox"/> \$91	<input type="checkbox"/> \$125
LIFE	<input type="checkbox"/> \$550	<input type="checkbox"/> \$800
Student	<input type="checkbox"/> \$25	

- Newsletter Subscription ONLY \$25**  
*Available ONLY to those living OUTSIDE the Greater Washington Metro area.*  
*Newsletter Subscription carries NO membership privileges.*  
*\*If you are a new member, where did you get this newsletter?*
- at Glen Echo Park (which event? \_\_\_\_\_)  
 Another FSGW Event (which one? \_\_\_\_\_)  
 From a friend who is a member  
 At my public library     Other \_\_\_\_\_

Name(s) \_\_\_\_\_

Address \_\_\_\_\_

City \_\_\_\_\_ State \_\_\_\_\_ Zip \_\_\_\_\_

Phone(s) \_\_\_\_\_

H: \_\_\_\_\_ - \_\_\_\_\_ - \_\_\_\_\_ W: \_\_\_\_\_ - \_\_\_\_\_ - \_\_\_\_\_

Email: \_\_\_\_\_

**May we list you in our Membership Directory?**  
 (FSGW does not provide mailing lists to any other organizations.)

- Yes     No  
 Yes, but do not list my:  
 address     home phone     work phone     email



Send form and check made payable to FSGW to:  
FSGW Membership • 6 Sunnyside Road • Silver Spring, MD 20910