



NEWSLETTER

Volume 49, Number 6

www.fsgw.org

February 2013

FSGW PROGRAM AND MEMBERSHIP MEETING: THE LYCEUM, ALEXANDRIA, VA



Danny Knicely and The Mountain Music Project Saturday, February 9 • 8 pm

The Mountain Music Project, an award-winning film, is a musical odyssey following two exceptional musicians, **Danny Knicely** and **Tara Linhardt**, on a journey

through rural Nepal and our own Commonwealth of Virginia. While in Tibet, they explore the extraordinary connections between two mountain cultures and are “blown away” by the similarities, trading tunes as if they are back home in a different valley. The evening’s program includes live music and commentary by Danny and Nepalese musicians.

Wherever mountain folks live, whether it be Kathmandu or Kentucky, the struggle for survival can be harsh and painful. Music



Continued on page 3.



FSGW Midwinter Festival

Takoma Park Middle School
7611 Piney Branch Rd., Takoma Park, MD

Saturday, February 2

12 noon–10:30 pm

Continued on page 2.

Hooray! It's time for the FSGW Mini-Fest. With two all-day dance tracks, and seven workshop and performance sites, plus unscheduled hallway shenanigans, there's no shadow of a doubt that it'll cure your winter blues!! Check the website at fsgw.org for updates, more in-depth details and a schedule.

DAYTIME PERFORMANCE/WORKSHOPS.

As of January 15, the schedule is as follows:

IN THE CAFETORIUM: The line-up is *Shenandoah Run*, the *a cappella* scientific group *The Chromatics*, the *Capitol Hillbillies*, rousing tamburitza from *Šarenica*, '60s folk from *Kensington Station* and traditional jazz and Appalachian hollers with the *Bumper Jacksons*. (Food will also be available in the Cafetorium, from noon until 7:30 pm.)

THE "ROOTS AMERICANA" ROOM was programmed by pie-baking folklorist **Emily Hilliard**. Read more about her on page 6. This track opens with shape-note singing, followed by a "Party at Ralph's House" featuring **Jeff Place**, Smithsonian Folkways Archivist. Enjoy ballads, traditional singing, and a jam ... and something different, a Foodways Traditions panel with folklorists and food producers. Also, see what FSGW is up to in the foodlore realm...

THE STORYTELLERS will provide a day of verbal fireworks around the theme "Light and Shadow." We welcome back the young storytellers, the *Twinbrook Tellers*—along with veterans **Tim Livengood**, **Megan Hicks**, **Margaret Chatham**, **Gary Lloyd**, **Jennifer Hine**, and **Geraldine Buckley**.

THE JAMS ROOM features a Gospel Sing, vocal fun with the **Morris Chorus**, sea chanteys led by the *Maritime Voices*, a blues jam with musicians from *Archie's Barbershop* and a raucous Irish Seisiún.

IN ROOM 114: **Shane Speal**, whose guitar is an empty cigar box and a stick; **David Williams** on a diddley bow; *The Primal Brothers*: **Jim Bunch**, **David Williams** and **Shane Speal**, on make-it-yourself instruments; a Washboard Extravaganza with **Ron Goad** (zany), **Jess Eliot Myhre** (ragtime/swing), and **Wayne Kahn** (zydeco), accompanied by **Chris Ousley**; and *The Rigatoni Brothers*; **Paul Oorts** and friends, who will play and discuss the Italian-American music of immigrants in the early 1900s.

TICKET PRICES

Day plus evening (noon to 10:30 pm)

FSGW Adult Member \$15 FSGW Child (6-12) \$8

FSGW Family Maximum \$45

Non-FSGW Adult \$20 Non-FSGW Child (6-12) \$10

Non-FSGW Family Max \$55

Day (noon to 6 ONLY)

or Evening (6 to 10:30 ONLY)

FSGW Adult Member \$9 FSGW Child (6-12) \$4

FSGW Family Maximum \$25

Non-FSGW Adult \$13 Non-FSGW Child (6-12) \$5

Non-FSGW Family Max \$35

Check the website for further information. If you purchase Mini-Fest tickets through our website, you must complete the purchase by

11:59 pm on Friday, February 1, 2013.

<http://www.fsgw.org>,

Print your receipt and bring it with you, although we will have a list of payments received.

ROOM 118 features the Balkan women's chorus, *Slaveya*; a dumbek workshop led by *Sidqi*. Next up, a close-harmony workshop by *The Chromatics*, the ever-popular doo-wop workshop led by **Flawn Williams**, and a blues-singing workshop with **Donna Fletcher** and **Pete Kraemer**. The viola and violin duo, *Marcolivia*, close the day.

ROOM 108 is filled with traditional music, beginning with **Lorraine Van Buren** and her talented ten-year-old niece, **Bea Lehman**. Next, cowboy songs with **Andy Wallace**, **Bob Clayton**, **Pete Kraemer** and **Martha Burns**; an Irish "song swap" by the *Friends of the Frank Harte Memorial Singers Circle*; **Chip Dixon**, **Phil Fox** and **Severn Savage** sing roadhouse country; **George Stephens**, **Kathy Westra**, **Lisa Null** and **Van Mertz** offer four-part harmonies, followed by *Scales and Crosstones* with songs from the sea; departing diva **Judy Cook** performs next; and the afternoon closes with the musical magic of **Melissa Weaver Dunning**, **Eleanor Ellis**, **Linda Rice-Johnston**, and **Michele Callaghan**.

Besides all this, Morris Dancers and Rapper-sword groups, a juggler (**Bill Amos**), and handbell ringers will fill the hallways. Crafts, CDs, and musical instruments will be available for sale.

Continued on page 4.

Danny Knicely and The Mountain Music Project

Saturday, February 9 • 8 pm



provides

peace and beauty in contrast to the hard times; it uplifts and connects. Through interviews and observations in the film, you experience the commonality of musical cultures a world apart.

Concerns shared by both cultures are examined. The preservation of Himalayan traditional music, performance and showmanship in a quickly changing world, the hurtful issues of class, caste and social status, the challenges of women as musicians, and even the presence of “moonshine,” are among the topics explored. The film introduces you to musicians in small villages who face the economic challenges of raising a family within a life of music, and to Appalachian musicians, including the late Mike Seeger, sitting on a porch musing about traditional music in current times. The film flashes back and forth between the two worlds, illustrating over and over again how small our differences really are.

Since the film’s debut, Danny and Tara have conducted lectures at Columbia University, the University of North Carolina at Chapel Hill, and for Asia Network, and have formed a non-profit to support mountain musicians globally. Danny, whose main band is *Furnace Mountain*, is an internationally recognized musician (primarily mandolin) and composer. His playing is described by his peers as being “intuitively brilliant.” Engaging and personable, he has served as a musical ambassador for our country, accepting assignments from the State Department. The film has won awards at several film festivals in the U.S. and Nepal.

Join us for this heart-warming evening — you’ll be happy you did!

At The Lyceum: Alexandria’s History Museum, 201 South Washington St., Alexandria, Va. 22314. This is a **FREE PROGRAM** for FSGW members, \$15 for nonmembers. It is also a membership meeting where nominations for the FSGW Board will be announced and accepted. The museum is wheelchair accessible.

Directions:

From Washington, D.C., and National Airport: Take the George Washington Parkway south, past the airport, into Alexandria. The Parkway becomes Washington Street in the City. After you cross King and Prince Streets (about one mile), the Lyceum will be on your right.

From I-95/I-495 (Capital Beltway): Take the US Route 1 North exit (first exit on the Virginia side of the Woodrow Wilson Bridge). Follow Route 1 (Patrick Street) about one mile. Turn right on Prince Street; turn right on South Washington Street. The Lyceum on your right.

By Metro: Take the Yellow or Blue Line to King Street station. Cross the parking lot and turn left, one half block to Prince Street. Turn left (east) on Prince Street and walk about one mile to Washington Street. Turn right, and the Lyceum will be on your right. Or take the 10A bus from Braddock Road Metro Station to Washington and Prince Streets.

Parking: Free parking for a limited number of vehicles in adjacent lot. Otherwise, you’ll need to pay for a lot or find a spot on the street.

DAYTIME DANCE.

Main Gym: Choose any or all: the *Carpathia Folk Dance Ensemble*, an English Ceilidh, led by **Michael Barraclough**, a tango workshop with the *Tango Mercurio Orchestra*, English Country Dance with **Dan Gillespie** and Scandinavian *schottis* taught by **Lisa Brooks** and **Dan Kahn** to *nyckelharpa* music by **Melissa Running**. **Ann Fallon** will call an easy-does-it Barn Dance to music by *AP & The Banty Roosters* at 5 pm. From 6 to 7, an open waltz session.

Aux Gym: Opens with squares called by **Eva Murray**, then a day of contras with local callers **Bob Hofkin**, **Perry Shafran**, **Dave Colestock**, **George Mercer**, and **Kim Forry**. Music by *The MetroGnomes* and *The Torch Takers*—a group of young musicians, Bring your instrument for the Open Band from 5 to 6. See the grid schedule on page 27.



From 7:30 to 10:30, two simultaneous evening programs, an exhilarating evening of contras and squares (and jokes), featuring **Ted Hodapp** calling to *AP and The Banty Roosters*; and an outstanding program of music and dance with the *New Century American Irish Arts Company*, **William Pint** and **Felicia Dale**, and more to be announced.

— April Blum, *Mini-Fest Chair*

Location: Takoma Park Middle School, 7611 Piney Branch Rd., Silver Spring, MD. **301.650.6444**.

Thanks to all the volunteers who make our Festival a success:

Here, we've shined the spotlight on two individuals and a group who have volunteered their time to make this event a grand success, **Ted Hodapp**, **Emily Hilliard**, and *the Chromatics*.



Contra Caller Connects Two Universes

***Physics** (from Ancient Greek: physis “nature”) is a natural science that involves the study of matter and its motion through space and time, along with related concepts such as energy and force.*

***Dance** is a series of movements that match the speed and rhythm of a piece of music.*

Dr. Theodore Hodapp, dancer, teacher, caller, physicist, is all about energy, motion and momentum. Not only is he a dervish on the dance floor, but he has rocketed to the top in his profession and now is the Director of Education and Diversity for the American Physical Society, the largest professional society representing physicists in the U.S.

He's all about teaching along both pathways. He's taught dance internationally for over thirty years—New England contras, traditional and country dances from England, France and Scandinavia, initially on his own, and now with his wife, Lynn Baumeister.

And he's taught physics as professor and chair of the Hamline University Physics Department in St. Paul, Minnesota. In his current position, he's working to improve the quality and quantity of K-12 physical science teachers. He's recently served as chair of

the Physics and Astronomy Division of the Council on Undergraduate Research, and has done research on laser cooling, optical modeling, and a topic he's passionate about, physics education.

Ted is a co-author of several books of original contra dances, performs with a number of traditional folk-dance groups, and choreographs and performs rapper, longsword and percussive dance, most recently with Cutting Edge Sword. His knowledge

The Chromatics and Emily Hilliard on page 6



Magpie

“Bird of Joy”

Sunday, February 10 • 7 pm

In Chinese, the chattering *Magpie* signifies good news and good fortune. **Terry Leonino** and **Greg Artzner**, who began to play music together in Kent, Ohio in September of 1973, chose the name for their band, and it proved to be an omen for their musical path. After Terry graduated from Kent State University in the spring of '74, she and Greg packed Greg's VW bus and moved to the Washington, D.C. area. In the years since, they have traveled and toured extensively, performed in concerts, at folk clubs and festivals around the world, and recorded many times.

Terry's voice is a truly impressive and versatile instrument. She is a gifted singer of jazz and blues in the tradition of Connie Boswell and Billie Holiday, but is equally comfortable with the subtle beauty of traditional folk and contemporary songs. As if this weren't enough, Terry is also an excellent player of the harmonica, mandolin, fretted dulcimer, and rhythm guitar.

Greg is an outstanding guitarist whose fingerstyle approach owes a lot to his heroes, guitar legends such as Reverend Gary Davis, Big Bill Broonzy, Nick Lucas, Phil Ochs, and Rolly Brown. His playing is the solid basis of *Magpie's* sound: from a slow Scots air or a plaintive ballad to a rollicking ragtime blues or infectious swing, Greg covers it all. His high baritone voice has equal range and his captivating interpretation gives power and beauty to the full spectrum, from growling blues, to a Chilean lament, to a sweet croon.

From the beginning, Terry and Greg's interests in various musical styles have led them to be eclectic in their repertoire. Rather than confine themselves to a single style, *Magpie* has always embraced a musical rainbow, and with impressive proficiency in each different genre. From traditional, classic country, swing, and blues of the nineteen twenties and thirties, to contemporary songs written by themselves and others, Terry and Greg cover a lot of musical ground.

At the home of Ursy Potter and Carter Hearn in McLean, VA. For driving directions, e-mail Ursy at riverlover@aol.com or phone 703.821.1373.

Suggested donation: \$15



Work o' the Weavers

*A folk concert to benefit
The Interfaith Unity
Build of Habitat for
Humanity*

Created by folk singers David Bernz and James Durst, this dynamic folk group will perform the songs of the original Weaver folk music quartet – Pete Seeger, Lee Hays, Ronnie Gilbert and Fred Hellerman. The two-hour-plus musical performance will electrify and delight.

Sat., March 2, 2013 at 7:30 p.m.

Bradley Hills Presbyterian Church
6601 Bradley Blvd., Bethesda, MD

**Advance \$25/Door \$30/Kids 15 &
Under \$10/Patron \$75**
Tickets: www.habitat-mc.org/faith

INFO: 301-365-2850



of physics helps him translate the concept of angular momentum from a theoretical to a more practical perspective.

And, he tells really bad jokes. “Did you hear about the new book on antigravity? I can’t put it down!

We are honored to have Ted as our caller for the evening contra dance....thank you, Ted!



Chromatics Combine Astronomy and Music

Ted is not the only folkie with a scientific background. Catch the *a cappella* group, **The Chromatics**, initially formed by astrophysicists at the Goddard Space Center in 1991. The group has produced seven CDs and is a favorite at our MidWinter Festival. Now six members strong, their harmonies are out of this world!

Down-to-Earth and Dynamite!

Meet Emily in the Roots Americana Room

Folklorist and new member **Emily Hilliard** began baking pies the summer after college. She and her friends began finding berry trees and bushes along sidewalks and in the parks of Ann Arbor, where they lived, and collected so many berries for free they decided to start making pies; it became a communal activity and they would share them with friends on porches, or give them to neighbors or people they had crushes on. When Emily moved to Vermont after that summer, her friend Margaret suggested they start a blog to keep in touch through the pies they baked, and **Nothing-in-the-House** (www.nothinginthehouse.com) was born.

Since then, Emily has lived in a number of places but has always maintained her pie baking and writing. In Vermont, and through subsequent internships at Smithsonian Folkways and the American Folklife Center, she developed her interest in folkways and the traditional arts, and went on to get a Master’s degree in Folklore from the University of North Carolina. With that background, she seeks to bring a sense of tradition, roots, and stories to her pie baking and writing, exploring the lives of other pie bakers such as Georgia Gilmore who baked pies to fund the Montgomery bus boycott during the Civil Rights Movement, investigating the origins of classic recipes like chess or mock-apple pie, and sharing her own stories.

In Washington, D.C. she has been doing freelance writing for sites such as NPR, PBS Food, and the new American Food Roots, and she recently put out an illustrated cookbook, *PIE. A Hand Drawn Almanac* with local illustrator Elizabeth Graeber. She also has started a small cottage-industry baking business, Nothing-in-the-House Baking Co. which serves up rustic-inspired baked goods at events and pop-up shops and offers custom orders, catering, and a Pie CSA.

As a new FSGW member, she is looking forward to launching more foodways programming and projects within the group. One such program, on D.C. Foodways Traditions, will be featured in the Mini-Fest’s American Roots room. She is also a frequent dancer at the D.C. Square Dance and enjoys playing old-time fiddle and guitar. This year, Emily has programmed the Roots Americana room....thank you, Emily!



Jeff Warner

Traditional Song Interpreter:
Return of the Prodigious Son

Saturday, February 16 • 8 pm

Long-time FSGW favorite interpreter and collector of traditional songs, **Jeff Warner** returns to our area in a house concert at **Ursy Potter** and **Carter Hearn's** just a couple of blocks outside the Beltway, just a couple of exits into Virginia.

Jeff is among the nation's foremost performer/interpreters of traditional music. His songs from the lumber camps, fishing villages and mountaintops of America connect 21st-century audiences with the everyday lives—and artistry—of 19th-century Americans. "Providing more than just rich entertainment, Jeff will leave you with a deeper appreciation of the land you live in" (Caffé Lena, Saratoga, NY). His songs, rich in local history and a sense of place, bring us the latest news from the distant past.

Jeff grew up listening to the songs and stories of his father, **Frank Warner**, and the traditional singers his parents met during their folksong-collecting trips through rural America. He accompanied his parents on their later field trips and is the editor of his mother's book, *Traditional American Folk Songs: From the Anne and Frank Warner Collection*. He is producer of the two-CD set, *Her Bright Smile Haunts Me Still*, the Warners' recordings of rural singers, many of them born in Victorian times. "The scion of one of the nation's most eminent families of folksong collectors, he represents a tradition that is fundamentally unbroken since pre-industrial times" (Stuart Frank, Senior Curator, New Bedford Whaling Museum).

Jeff has performed widely, from large festivals in the UK, to clubs, festivals and schools across America. He plays concertina, banjo, guitar and several "pocket" instruments, including bones and spoons. And "he inhabits a song in a way which few singers can do" (Royal Oak Folk Club, Lewes, UK).

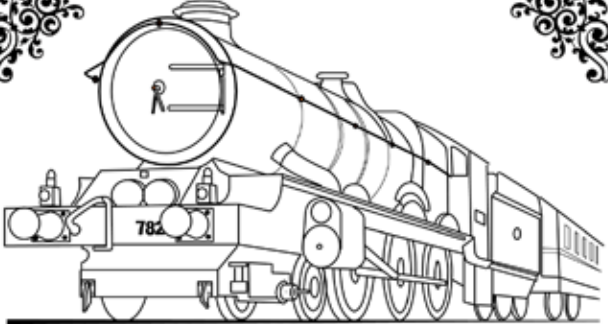
A native of New York City, Jeff has lived in Portsmouth, NH, since the late 1990s. He is an artist for the New Hampshire Council on the Arts, a speaker for the New Hampshire Humanities Council, and was a 2007 State Arts Council Fellow. He has toured nationally for the Smithsonian Institution, taught at Pinewoods, Ashokan and Swannanoa summer music programs and recorded for Flying Fish/Rounder, WildGoose and other labels. His 1995 recording, *Two Little Boys*, received a Parents' Choice Award.

At the home of **Ursy Potter and Carter Hearn** in **McLean, VA**. For driving directions, e-mail Ursy at riverlover@aol.com or phone **703.821.1373**.

Suggested donation: \$15



STEAMING FROM GREAT BRITAIN



THE CELEBRATED FOLK DUO
**ANDREW MARCUS
GLYN COLLINSON**
- 21ST CENTURY BRITISH ROOTS MUSIC -
FROM 7.30PM - 9.00PM, TUESDAY FEBRUARY 12TH WILL APPEAR AT
WASHINGTON REVELS
531 DALE DRIVE, SILVER SPRING, MARYLAND
\$15 MINIMUM DONATION
ALL PROCEEDS TO THE REVELS!!!
FOR TICKETS VISIT WWW.REVELSDC.ORG
AND FOLLOW THE LINK ON THE TOP RIGHT

PAID ADVERTISEMENT

FSGW Sings/Swaps & Co-sponsored Events

FSGW OPEN SING • TAKOMA PARK, MD FRIDAY, FEBRUARY 1 • 8:30 PM

Kathie Mack will be hosting the Open Sing this month and has chosen "Am I Blue?" as the theme; songs about colors and feelings. She's just 2 blocks from the Takoma Metro on the Red Line. For info/directions, call her at **301.270.5367**

FSGW GOSPEL SING • NW, DC SUNDAY, FEBRUARY 10 • 4-8 PM

Gospel sings are held the second Sunday of every month at various homes. Singing starts at 4 pm and breaks for a covered dish supper at 6 pm with more singing after supper. This month's Sing will be at the home of **Rick Morgan** and **Arlene Rodenbeck**. Info/directions: **202.364.3663**.

FSGW STORYSWAP • OLNEY, MD SATURDAY, FEBRUARY 9 • 7:30 PM

Storytellers and listeners are invited to the home of **Jake Simpson** for an evening of shared stories and potluck snacks. Snack to share are welcome. Free. For RSVPs and directions call **301.260.1649**.

Cooks' Tree House Is For Sale



Many of you know this house from FSGW concerts. 3 bedroom, 3 bath, with new kitchen & master bath.

Judy and Dennis are moving to Ohio in April, so if you know anyone who might be interested in a music friendly home with a sound studio on a two-acre wooded lot overlooking a stream, give them a call at **301-776-4314** or email them at **House@ceimd.com**

Details are at <http://ceimd.com/house/>

PAID ADVERTISEMENT

SACRED HARP SINGING ARLINGTON, VA



SUNDAY, FEBRUARY 24 • 4-8 PM

Monthly on the fourth Sunday, singers gather at St. Peter's Episcopal Church, 4250 North Glebe Rd., Arlington, VA, to enjoy the unaccompanied harmonies of the old-time shape-note hymns and fugues in the 1991 edition of the original *Sacred Harp* and 1958 *Christian Harmony* (loaner books available), with a potluck supper break from 6 to 7. All are welcome. Info: **301.229.8534**.

Directions: St. Peter's is one-half mile south of Chain Bridge, on the west side of Glebe Road (crossing from Washington, on your right, from Virginia, on your left; from the Beltway, take the GW Parkway south to 123 north, then right at the T to Glebe). Look for the FSGW signs. Turn on Tazewell St. to reach the parking lot.

DOO WOP SING • TAKOMA PARK, MD FEBRUARY 2, AT THE MIDWINTER FESTIVAL

Do you like harmonies? Join us at the MidWinter Festival for an ever-popular workshop led by **Flawn Williams**. (Room 118, 3:45-4:30; see the details on page 2). Then, sing with us at our quarterly Doo Wop Sings and potluck suppers (January, April, July and October). We'll emphasize four-part harmonies singing those great songs from the 1950s and 1960s (e.g., *Blue Moon*, *You're Sixteen*, *My Boyfriend's Back*).

CO-SPONSORED

GLEN ECHO INTERNATIONAL FOLKDANCERS • MD THURSDAYS • 7:30-10:45 PM

Every Thursday at the Church of the Redeemer, 6201 Dunrobbin Dr. (just west of the shopping center across from Glen Echo Park). Lesson at 7:30. Request dances from 9 to 10:45. Mostly recorded music. No partner/experience necessary. Wear comfortable clothing and soft-soled shoes. Adm. \$5. Info: **Jamie** at **301.466.3018** or dancing.planet@erols.com

LISA NULL is accepting a few new voice students: basic vocal techniques, coaching in traditional styles. Downtown Silver Spring. FREE mutual interview! enul@starpower.net or **301.587.2286**

PAID ADVERTISEMENT

FSGW Sunday Night Dances

at Glen Echo Park, MD

Contras & Squares • 7:30–10:30 pm

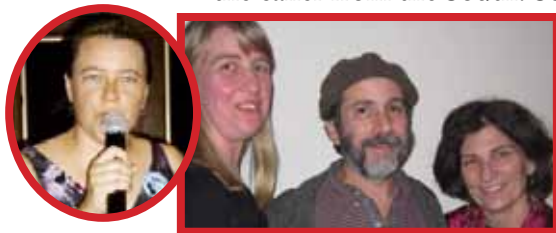
Introductory lesson every Sunday, 7–7:30 pm

Join us for an evening of dancing at Glen Echo Park. Every Sunday FSGW (in cooperation with the National Park Service, Montgomery County, and the Glen Echo Park Partnership for Arts and Culture) presents contras and squares danced to live music by fabulous bands with entertaining callers. Experienced and new dancers welcome; no partner needed. **Welcome/Orientation session every Sunday at 7. Come early for an introduction to the basic moves.** Dances often become more challenging as the evening progresses. During the spring and summer, most Sunday dances are in the Bumper Car Pavilion, then move into the 1920s restored Spanish Ballroom in the fall and winter. Bring water or a sports drink, and dress in layers. Smooth-soled shoes are kindest on your knees and ankles when turning. Info: **Penelope Weinberger**, dance@fsgw.org

**ADMISSION: \$9 FOR FSGW, BFMS, CDSS, AND ATDS MEMBERS,
\$5 AGES 7–22 (WITH STUDENT ID IF OVER 17)
\$12 FOR THE GENERAL PUBLIC.**

February

3 **Maggie Jo Saylor** calls to *Anadama*. **Amelia Mason** on fiddle, **Emily Troll** on accordion, **Bethany Waickman** on guitar. Three girls from the North, named after a kind of bread, play dynamic Irish, Quebecois and New England tunes to the caller from the South. See a bit of lore about “Anadama” on page 10.



10 The tunes could be no sweeter as rendered by **Sugar Beat**; **Elke Baker** on fiddle, **Marc Glickman** on piano, **Susan Brandt** on flute. **Valerie Helbert** calls.

17 Devilish delight prevails with *Taylor Among the Devils* on stage. **Marty Taylor** on flute, **Jonathan Jensen** on guitar, and **Steve Hickman** on fiddle, the wonderful **Bill Wellington** tailors the dancing for your pleasure!



24 Boston-based dance band *Nor'easter* delights in bringing infectious, uplifting music to dance floors throughout the country. What is there to say when **Max Newman** (guitar), **Cedar Stanistreet** (fiddle) and **Julie Vallimont** (piano, accordion) blow into town? The New England trio will provide gales of fun and **Nils Fredland** will do what Nils Fredland does!



RIDE-SHARING AT THE SUNDAY NIGHT CONTRA DANCE

Need a ride from Glen Echo to the Metro Station or to points beyond? Hoping to hitch a ride to the next Sunday Night Dance? The FSGW ride-sharing program, pairing needy dancers with benevolent drivers, is up and running. For help, see the Dance Chair or the ticket salespeople before the dance or at the break.

FSGW English Country Dances

at Glen Echo Town Hall, MD • Wednesdays • 8–10 pm

Dance on a wood floor in the climate-controlled community room of the **Glen Echo Town Hall, 6106 Harvard St., Glen Echo, MD 20812**. Bring clean, non-scuffing shoes for dancing. Cheerful, patient, talented callers are accompanied by top-notch musicians—every Wednesday a different and delightful mix of instruments, including piano, fiddle, flute, harp, oboe, concertina, bassoon, cello, viola, and recorder. Light refreshments served at the break. Experienced and new dancers welcome. No partner required. **Info: Stephanie Smith at 301.229.3577 or Roger Broseus at English@fsgw.org**

Admission: \$8 for FSGW members, \$10 for non-members.

February

6 **Dan Gillespie** calls to the playing of **Barbara Heitz** (flute), **Harriet Kaplan** (cello), and **Liz Donaldson** (piano).

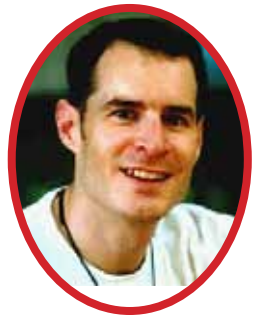
13
Michael Barraclough leads the dances to the playing of **Becky Ross** (fiddle), **Colleen Reed** (flute) and **Judy Meyers** (piano).



20
Joseph Pimentel calls while **Jeff Steinberg** (fiddle), **Susan Brandt** (flute), and **Liz Donaldson** (piano) play the tunes.



27
Melissa Running leads the dancing while **David Knight** (fiddle), **Bruce Edwards** (concertina and bassoon), and **Francine Krasowska** (piano) make the music.



A bit of lore:

Supposedly a New England fisherman became angry with his wife because all she gave him to eat, day after day, was cornmeal and molasses. One night he tossed flour and yeast into the cornmeal and molasses, put it all into the oven and baked it. He sat down to eat a loaf of bread for a change, mumbling “Anna, damn her!”

— Shortened to **Anadama**, it’s still a New England staple.

The Cookbook Project

In addition to music and dance, FSGW wishes to promote and preserve all aspects of folk culture. So, in the near future, we’ll be exploring culinary lore, as well as publishing a cookbook of members’ favorite recipes intended for sale by Dec 1, 2013. We’d especially love to take some of yesterday’s old recipes and make them new again. And we’d like to mix it up, with some dishes healthy and some decadent. Please share your own special favorite! And let us know if there is any significance about the recipe. For example, is that Mud Cake a favorite birthday tradition for someone special? Those anecdotes are important. Please e-mail your recipes to cookbook@fsgw.org. And if you are able to help out with this project in any way--writing, editing, marketing, design, sales and promotion, taste-testing...yes, taste-testing---with a group or on your own, please let us know by writing to cookbook@fsgw.org. Thank you!



Family Dance

Sunday, February 10 •
3–5 pm

Dancing releases energy! It's the cure for cabin fever...bring the kids out for a live trio on flute, fiddle and piano. **Sugar Beat** plays to the calling of **Valerie Helbert**. Dances are taught and called; the little folks love it! 6106 Harvard Ave., upstairs from the Glen Echo Post Office. \$5 per person.



The Great American Square Dance Revival—Part XVII

FSGW's DC Square Dance Collective presents our
TWO YEAR Anniversary Square Dance
Saturday, March 2 • 8:30 - 11:30 pm

Our celebration will include music by **The Possum Wranglers**: **Paul Brown** and **Scott Prouty** on fiddle, **Brent Feito** on banjo, **Brandt Ryder** on guitar, and **Kevin Enoch** on bass with **Janine Smith & Friends** calling the figures. And we're thanking the welcoming folks at Saint Stephen's by helping kick off their Capital Campaign. Come see what it's all about, right in the heart of D.C. on a swingin' Saturday night. All are welcome—young and old, brand new and experienced dancers, hipsters and total outta the loopers. No partner, lessons, overalls, or fancy dress needed. Location: **Saint Stephen's Church, 1525 Newton St. NW, Washington, D.C.**, near the Columbia Heights Metro. \$5 at the door. More info: visit www.dcsquaredance.com



Celebrating 31 Dancing Years!

Chesapeake Dance Weekend

April 12-14

At Camp Letts in Edgewater, MD

Join us for another epic dance experience with **Lisa Greenleaf** with the **Latter Day Lizards**, **Kathy Anderson** with **Sugar Pie** and more Outstanding Talent!

Substantial youth discounts and work scholarships available.

Visit www.ChesapeakeDanceWeekend.org for ALL the juicy details and to register online.



FSGW BOARD MEETING HIGHLIGHTS • JANUARY 8, 2013

Present were President **Mary Cliff**, Vice President **Sue McIver**, Treasurer **Richard Aigen**, Past Treasurer **Jerry Stein**, Secretary **Sandy Aubin**, Membership Chair **RosieLee Salinas**, Concerts Chair **Betsy Platt**, Publicity Chair **Liz Milner**, Publications Chair **Roxanne Watts**, Members-at-Large **Peter Maier**, **Janie Meneely**, and **Lesley Root**

Absent: Dance Chair **Penelope Weinberger**

- FSGW remains solvent. The treasurer's report is less than accurate because event door reports are not being submitted in a timely fashion. An inventory of sound equipment is needed. The van, used for storing and transporting FSGW sound equipment, should be sold or donated.
- The **Ed Miller** concert was well attended. **Marty Summerour** got an appreciative "Thank You" for putting together the "End of the World" concert; ten new members joined at that popular event.. The February program is scheduled, March, tentatively scheduled. The Hill Center and Creative Cauldron at ArtSpace Falls Church were suggested as possible event partners.
- **RosieLee** reported that membership is about the same as a year ago. Database problems need attention.
- Production, sales price, and intended audience objectives were discussed for the cookbook
- Board meetings will be on the public calendar.
- Web Administration will coordinate with program chairs to put more information on their program pages.
- Mini-Fest needs members to staff the Membership table. Members were asked to volunteer.
- Board members were asked to volunteer to provide policy proposals about membership suspension and re-instatement.
- **Pat McGee**, archiving recorded FSGW events, wants authorization to task volunteers, members or non-members, to log digitized recordings.. Mary is doing research, and a supporting motion was passed
- The annual Elections Committee was nominated and approved.

FSGW Newsletter Editorial and Advertising Policy

The Folklore Society of Greater Washington endeavors to print copy it deems relevant to its membership and purpose as stated in its by-laws:

"The main purpose of the Society is to further the understanding, investigation, appreciation, and performance of the traditional folk music and folklore of the American people."

- All copy (except ads) must be submitted by e-mail to publications@fsgw.org in text format in the body of the e-mail by the 10th of the preceding month.
- All listings must be submitted in the format found on our website, fsgw.org. Click on the newsletter tab and scroll down to the paragraph in green lettering.
- The Editor reserves the right to edit or omit copy as necessary. Ad content must be approved by the editor.

Basic Ad charges: 1/4 page ads (3.4" x 4.5" or 7.25" x 2.5"): \$65 for one month, \$120 for two. Commercial business: \$8 for 10 words. Non-commercial and individual: \$4 for 10 words. 25% discount for any single ad placed in 11 consecutive issues (one year) and paid in advance. We will work with you on larger ads. Copy, with check made payable to FSGW, must be received by the newsletter deadline. Mail to the Editor: **Roxanne Watts, PO Box 2672, Reston, VA 20195.**

Editor: Roxanne Watts • newsletter@fsgw.org • 703-618-1799

**Design & Layout: Jennifer Woods GRAPHICS
Silver Spring, MD • 301-587-7174**

FSGW Board 2012–2013

Mary Cliff, president

Sue McIver, vice president

Richard Aigen, treasurer

Jerry Stein, past treasurer

Sandy Aubin, secretary

Betsy Platt, programs

Penelope Weinberger, dance

RosieLee Salinas, membership

Roxanne Watts, publications

Liz Milner, publicity

Members-at-Large

Peter Maier

Janie Meneely

Leslie Root

president@fsgw.org

vicepresident@fsgw.org

treasurer@fsgw.org

treasurer@fsgw.org

secretary@fsgw.org

program@fsgw.org

dance@fsgw.org

membership@fsgw.org

newsletter@fsgw.org

publicity@fsgw.org

board1@fsgw.org

board2@fsgw.org

board3@fsgw.org

FSGW Web Redesign Committee

Sandy Aubin, Committee Co-Chair

web@fsgw.org

Mini-Festival Coordinating Committee

April Blum, Mini-Fest Chair

minifest@fsgw.org

Washington Folk Festival Coordinating Committee

Dwain Winters

DWAINFEST@aol.com

703.534.7581

703.519.9157

703.671.6181

703.723.3621

301.717.4641

301.315.9461

703.765.5834

703.618.1799

703.978.2774

301.657.2789

FSGW BOARD MEETINGS

TUESDAY, FEBRUARY 5 • 8 PM

The monthly FSGW board meetings will be held in Classroom 201 Arcade Bldg at Glen Echo Park, MD. All FSGW members may attend. If you wish the Board to consider a particular matter, please contact the appropriate board member, or **Mary Cliff by e-mail, president@fsgw.org, or call afternoons or evenings 703.534.7581** in advance of the meeting.

Concerts

DRY BRANCH FIRE SQUAD • HERNDON, VA FRIDAY, FEBRUARY 1 • 8–10:30 PM

Traditional bluegrass and Appalachian-style music on the ragged edge with all the raw energy and emotion you could ever want. Holy Cross Lutheran Church, 1090 Sterling Road, \$15 at the door, children 12 and younger free. Info: **Bob Thompson**, 703.435.8377 or kd4fue2@verizon.net.

CARROLL CAFE AT SEEKERS CHURCH • TAKOMA, D.C. FRIDAY, FEBRUARY 8 • 7:30 PM

Emma's Revolution is the duo of activist musicians, **Pat Humphries & Sandy O.** Smart—funny and informative, like Rachel Maddow and Jon Stewart with guitars. They deliver the energy and strength of their convictions. Songs have been sung for the Dalai Lama, praised by Pete Seeger and recorded by Holly Near. 276 Carroll St. NW at Takoma Metro. \$15 online or \$18 at the door. Info: **Jesse Palidofsky** 301.562.4147 or 202.829.9882 night of show only. www.carrollcafe.org.

MARCUS/COLLINSON CONCERT • SILVER SPRING, MD TUESDAY, FEBRUARY 12 • 7:30–9 PM

Come enjoy and sing along with the energetic British folk sensations **Andrew Marcus** and **Glyn Collinson** in and reveling. New tunes! New songs! Dancing elephants! \$15 minimum donation (all proceeds to Washington Revels). 531 Dale Dr., Info, or to purchase tickets, www.rev-elsdc.org

MILL RUN • HERNDON, VA SATURDAY, FEBRUARY 16 • 7:30–10:00 PM

Traditional bluegrass music with two of the very finest voices around taking the lead, **Bobby and Billie Sue Goff**. Their voices are a beautiful match, and can they ever deliver on a song! They're also husband and wife so watch out for the jokes, folks. The rest of the band is equally blessed with tremendous talent, so *Mill Run* gives you the whole enchilada. Holy Cross Lutheran Church, 1090 Sterling Road, \$12 at the door, children 12 and younger admitted free. Info: **Bob Thompson**, 703.435.8377 or kd4fue2@verizon.net.

FULLSET • SHEPHERDSTOWN, WV FRIDAY, FEBRUARY 22 • 8 PM

This six-member ensemble ranging from fiddles to uilleann pipes to vocals was recently dubbed "New Group of the Year" at the 2012 Live Ireland Music Awards and "Best

New Band" at the Irish American News Music Awards. The sound is intoxicating. To be held in the Shepherd University Frank Center. \$18 for adults, discounts for seniors, SMaD members, children. Info: **304.263.2531**, e-mail **Joanie** at updf@earthlink.net, or smad.us.

PHIL FOX HOUSE CONCERT • TAKOMA PARK, MD SATURDAY, FEBRUARY 23 • 8 PM

You may have already heard **Phil Fox** and his guitar at local jams and open mikes or at the FSGW Getaway or Midwinter Festival. Now is your chance to catch his Theory of Everything at a house concert in Takoma Park! Easy access by Metro (Takoma Station on the Red Line). Free parking on the street. Suggested donation: \$10. Reservations/directions/info: **Kathie Mack**, 301.270.5367 or kpmack2@gmail.com

WORK O' THE WEAVERS BENEFIT CONCERT BETHESDA, MD SATURDAY, MARCH 2 • 7:30 PM



The sounds of the Weavers; *Work o' the Weavers*: **David Bernz**, **James Durst**, **Mark Murphy** and **Martha Sandefer** will fill the halls of Bradley Hills Presbyterian Church for the benefit of the Montgomery County Habitat for Humanity Interfaith Unity Build. Later next spring, members of the Montgomery County faith community—churches, synagogues and mosques—will come together to help build 19 low-income townhouses in Gaithersburg.

Tickets—www.habitat-mc.org/faith. Info: **Megan** at Habitat 301.990.0854x25

NORTHERN HARMONY WORLD MUSIC CHOIR TOWSON, MD SATURDAY, MARCH 2 • 7:30 PM

Northern Harmony, the unique world music vocal ensemble based in Vermont, USA, comes to Baltimore for a concert at Babcock Presbyterian Church in Towson, 8240 Loch Raven Boulevard, Towson, Maryland 21286, co-sponsored by the church and the Baltimore Folk Music Society. Admission is \$13 for adults, \$8 for children, \$3 less for members of BFMS/FSGW or Babcock. Info, svob@comcast.net.



SUNDAY	MONDAY	TUESDAY	WEDNESDAY	
<h1>February 2013</h1> 				
<p>3</p> <p>10 am Annapolis Jam 2:30 pm Wheaton Scottish Jam 2:45 Glen Echo Waltz 7:30 FSGW CONTRA DANCE <i>MAGGIE JO SAYLOR WITH ANADAMA</i></p>	<p>4</p> <p>7 pm DC Bluegrass Jam 7:30 Bethesda Int'l Folk Dance 7:30 Arlington Morris Women 7:30 IMT Rockville: Robin & Linda Williams 8 Baltimore English Country Dance 8 Bethesda Scottish Country Dance 8 Balkan Singing</p>	<p>5</p> <p>7 pm Chevy Chase Israeli Dance 7:15 Reston/Herndon Folk Club 7:30 Herndon New Irish Session 8 FSGW BOARD MEETING 8 Greenbelt Scottish Country Dance 8 Sea Chanteys—Wheaton</p>	<p>6</p> <p>7:45 pm Rock Creek Morris Women 8 FSGW ENGLISH COUNTRY DANCE 8 Baltimore Contra Dance 8 Alexandria Scottish Country Dance 8 Columbia Int'l Folk Dance</p>	<p>7 pm Sil...</p>
<p>10</p> <p>10 am Annapolis Jam 11:30 Takoma Park—Norwegian Potluck and Dance 2 pm Arlington CABOMA Jam 3 FSGW FAMILY DANCE 3 Glen Echo Hot Society Dance 4 Alpine Dancers 4 FSGW GOSPEL SING 7 FSGW HOUSE CONCERT: <i>MAGPIE</i> 7:30 FSGW CONTRA DANCE <i>VALERIE HELBERT WITH SUGAR BEAT</i></p>	<p>11</p> <p>7:30pm Bethesda Int'l Folk Dance 7:30 Arlington Morris Women 8 Baltimore English Country Dance 8 Bethesda Scottish Country Dance 8 Balkan Singing</p>	<p>12</p> <p>Mardi Gras</p> <p>7 pm Chevy Chase Israeli Dance 7:15 Reston/Herndon Folk Club 7:30 Herndon New Irish Session 7:30 Silver Spring— Marcus/Collinson Concert 8 Greenbelt Scottish Country Dance 8 Focus Rockville— Amy Speace plus Angel Snow 8 Glen Echo Mardi Gras Zydeco Dance</p>	<p>13</p> <p>7:30 pm IMT Takoma Park—Al Parris 7:45 Rock Creek Morris Women 8 FSGW ENGLISH COUNTRY DANCE 8 Baltimore Contra Dance 8 Alexandria Scottish Country Dance 8 Columbia Int'l Folk Dance 8 Sea Chanteys—Baltimore</p>	<p>Vale...</p>
<p>17</p> <p>10 am Annapolis Jam 2:30 pm ECD 4 Fun—Glen Echo 2:45 Glen Echo Waltz 4 Sandy Spring Sacred Harp Singing 7 Focus Alexandria—Scott Ainslie plus Rick Franklin 7:30 FSGW CONTRA DANCE <i>BILL WELLINGTON WITH TAYLOR AMONG THE DEVILS</i></p>	<p>18</p> <p>Presidents Day</p> <p>7 pm DC Bluegrass Jam 7:30 Bethesda Int'l Folk Dance 7:30 Arlington Morris Women 7:30 IMT Rockville—<i>Cantrip</i> 8 Baltimore English Country Dance 8 Bethesda Scottish Country Dance 8 Balkan Singing</p> 	<p>19</p> <p>7 pm Chevy Chase Israeli Dance 7 DC Sacred Harp Singing 7:15 Reston/Herndon Folk Club 7:30 Herndon New Irish Session 8 Greenbelt Scottish Country Dance</p>	<p>20</p> <p>7 pm Arlington Jam 7:45 Rock Creek Morris Women 8 FSGW ENGLISH COUNTRY DANCE 8 Baltimore Contra Dance 8 Alexandria Scottish Country Dance 8 Columbia Int'l Folk Dance 8 Sea Chanteys—Annapolis</p>	<p>7 pm Sil...</p>
<p>24</p> <p>10 am Annapolis Jam 2 pm Arlington CABOMA Jam 3 Glen Echo Hot Society Dance 4 Alpine Dancers 4 FSGW SACRED HARP SINGING 7:30 FSGW CONTRA DANCE <i>NILS FREDLAND WITH NOR'EASTER</i></p>	<p>25</p> <p>7:30 pm Bethesda Int'l Folk Dance 7:30 Arlington Morris Women 8 Baltimore English Country Dance 8 Bethesda Scottish Country Dance 8 Balkan Singing</p>	<p>26</p> <p>7 pm Chevy Chase Israeli Dance 7:15 Reston/Herndon Folk Club 7:30 Herndon New Irish Session 8 Greenbelt Scottish Country Dance 8 Sea Chanteys—NW DC 8 Focus Rockville—Billy Jonas</p>	<p>27</p> <p>7 Cajun Jam—Greenbelt 7:30 IMT Takoma Park— Lily Henley and Friends 7:45 Rock Creek Morris Women 8 FSGW ENGLISH COUNTRY DANCE 8 Baltimore Contra Dance 8 Alexandria Scottish Country Dance 8 Columbia Int'l Folk Dance</p>	<p>7 pm Sil...</p>

THURSDAY	FRIDAY	SATURDAY
	<p>1</p> <p>6 pm Kingstowne Bluegrass Jam Alexandria 7 Arlington Jam 7 Potter's House 8 Baltimore Cellar Stage 8 Common Ground Baltimore: Joyce Scott 8 Herndon: Dry Branch Fire Squad Concert 8:30 Friday Night Contra Dance 8:30 FSGW OPEN SING 8:30 Greenbelt Int'l Folk Dance</p>	<p>2</p> <p>1 pm Archie Edwards Blues 8 Common Ground Westminster: Shelley Ensor 8 Shepherdstown, WV Contra Dance</p> 
<p>7</p> <p>ver Spring—Live Blues ederick Irish/Bluegrass Jam en Echo Int'l Folk Dance evy Chase Int'l Folk Dance ington Circle Dance t. Vernon Int'l Folk Dance ggy Bottom Morris Men en Echo Slow Blues Dance</p>	<p>8</p> <p>7 pm Potter's House 7:30 Carroll Café—Emma's Revolution 8 Baltimore Cellar Stage 8 Harrisburg, PA Contra Dance 8:30 Friday Night Contra Dance 8:30 Greenbelt Int'l Folk Dance</p>	<p>9</p> <p>1 pm Archie Edwards Blues 2 Baltimore Contra Dance Valentine's & Chocolate Extravaganza 7:30 CCE Ceili—Herndon 7:30 FSGW STORYSWAP 8 FSGW MONTHLY PROGRAM: MOUNTAIN MUSIC PROJECT THE LYCEUM, ALEXANDRIA, VA 8 Reston Contra Dance 8 Silver Spring English Country Dance</p>
<p>14</p> <p>entine's Day lk Hoot! —Mt. Rainier ederick Irish/Bluegrass Jam ver Spring—Live Blues en Echo Int'l Folk Dance evy Chase Int'l Folk Dance ington Circle Dance t. Vernon Int'l Folk Dance ggy Bottom Morris Men en Echo Slow Blues Dance</p> 	<p>15</p> <p>6 pm Kingstowne Bluegrass Jam —Alexandria 7 Potter's House 8 Baltimore Cellar Stage 8 333 Coffeehouse—Jeff Warner 8:30 Friday Night Contra Dance 8:30 Greenbelt Int'l Folk Dance</p>	<p>16</p> <p>1 pm Archie Edwards Blues 7 Annapolis Contra Dance 7 Greenbelt Scandinavian Dance 7 Leesburg Assembly English Country Dance, Great Falls, VA 7:30 Herndon—Mill Run Concert 8 Bluemont Dance 8 FSGW HOUSE CONCERT JEFF WARNER 8 Greenbelt Israeli Dance 8 Lancaster, PA Contra Dance</p>
<p>21</p> <p>ver Spring—Live Blues ederick Irish/Bluegrass Jam en Echo Int'l Folk Dance evy Chase Int'l Folk Dance ington Circle Dance t. Vernon Int'l Folk Dance ggy Bottom Morris Men dwin Station: re About Nine eaton Folk Sing en Echo Slow Blues Dance</p>	<p>22</p> <p>7 pm Potter's House 7:30 Artisphere—Zydeco Dance 8 Harrisburg, PA Contra Dance 8 Shepherdstown, WV— FullSet Concert 8:30 Friday Night Contra Dance 8:30 Greenbelt Int'l Folk Dance</p>	<p>23</p> <p>1 pm Archie Edwards Blues 1:30 Hammered Dulcimer Jam 8 Frederick Contra Dance 8 Takoma Park—Phil Fox Concert</p>
<p>28</p> <p>ver Spring—Live Blues ederick Irish/Bluegrass Jam en Echo Int'l Folk Dance evy Chase Int'l Folk Dance ington Circle Dance t. Vernon Int'l Folk Dance ggy Bottom Morris Men sup Zydeco Dance en Echo Slow Blues Dance</p> 		

FSGW Advance Notice

Sunday, March 10
VILLAGE HARMONY
LOCATION TBA

April 6 & 7
**24TH ANNUAL
POTOMAC RIVER SACRED
HARP SINGING CONVENTION**

April 12-14
**31ST ANNUAL CHESAPEAKE
DANCE WEEKEND**
CAMP LETTS, EDGEWATER, MD

Saturday, April 13
TENORES DE ATERUE
LOCATION TBA

Saturday, May 18 • 2:30-11 pm
WASHINGTON SPRING BALL
English Country Dancing
COLLEGE PARK, MD

Saturday, June 1-2, 2013
**33RD ANNUAL
WASHINGTON FOLK
FESTIVAL**
GLEN ECHO PARK, MD

Sunday, September 22 • 1-11 pm
CONTRASTOCK 3,
Tidal Wave, Mean Lids,
Giant Robot Dance with
Callers **Beth Molaro,**
Janine Smith and
Sarah VanNorstrand
GLEN ECHO PARK BALLROOM
GLEN ECHO PARK, MD

October 4-7, 2013
**49TH ANNUAL
FSGW GETAWAY**
West River Conference Center
West River, MD

**FSGW 50TH ANNIVERSARY
ALL OF 2014!**

2013 Nominations for the FSGW Board

You are invited by the Elections Committee, chaired by Sue McIver, to nominate candidates for the 2013/2014 FSGW Board. They are in the process of working on a slate of candidates for the May election. You may offer your nominations for the FSGW board at the Monthly Programs on February 9 and March 10 and at the Sunday Contra dances on February 24 and March 21. These have been designated official Folklore Society meetings for the purposes of announcing candidates already selected and receiving nominations for new ones.

Additionally, nominations can be submitted, by March 30, directly to the Election Committee by petition of five current FSGW members. You can contact any of the committee members directly or email the Election Committee at elections@fsgw.org.

You have the option to cast your ballot electronically in May if you've selected that option before ballots are sent out. This is an environmentally friendly way to cast your ballot, and more cost effective for FSGW than balloting by mail. You can select electronic balloting in your member profile, "My Name", on our web site, fsgw.org, following these simple directions.

HOW TO SELECT ELECTRONIC BALLOTING

You'll need your Member ID number, found on your Membership card and on the mailing label of your FSGW Newsletter if mailed to you. Send a note to membership@fsgw.org if you've lost track of it.

- ☞ Choose "FSGW Login" at the top of any page on our web site, fsgw.org.
- ☞ Login using your last name as the login name and your membership number as the password.
- ☞ Choose the "My Name" menu button at the top. You'll see your "Name Information" page.
- ☞ Look below the name and choose the "Contact" button. You'll see your Contact Information page. (They may be labeled "Delivery").
- ☞ There you will find the line that begins with "Electronic" and ends with a check box and "Ballots vs. paper".
- ☞ Check (click) the check box which indicates you prefer to receive electronic (e-mail) ballots instead of paper ones.
- ☞ Use the "Click to Save Changes", wait for the screen to refresh, then select the "LOGOUT" button in the top menu.

Congratulations, you're done.



Friday & Saturday February 22/23, 2013

**Holiday Inn-College Park
10000 Baltimore Road,
College Park MD 20740**

Super Line-up of National and Local Performers, including:

Larry Sparks & The Lonesome Ramblers

Danny Paisley and the Southern Grass

Frank Solivan & Dirty Kitchen

Bill Emerson and Sweet Dixie- Friday

Remington Ryde

Jay Armsworthy & Eastern Tradition

Newgrass Effect with Tom Gray



Call 866-240-6315 for reservations!
Mention 'DCBluegrass Festival' for special rates!

**8-12
PM
Friday!**

Mid-Atlantic Bluegrass Band Contest
Sponsored by Patuxent Music
Followed by Bill Emerson and Sweet Dixie

BIRCHMERE CONCERT HALL

3701 Mt. Vernon Ave., Alexandria VA 22305; all shows begin at 7:30 pm; birchmere.com

February

- 8 & 9 **Arlo Guthrie** "Here Comes the Kid" tribute to Woody Guthrie's 100th Birthday; \$45
- 11 **John Mayall** "80th Birthday Celebration Tour," blues, \$39.50
- 12 **Tribute to Mike Auldridge**. Featuring Jerry Douglas, Emmylou Harris, David Bromberg, Rob Ickes, Sally Van Meter, John Starling, Ben Eldridge, Tom Gray, *The Seldom Scene*, and many others! \$45.00
- 13 **Tab Benoit**, Louisiana blues, \$27.50
- 15&17 **Eddie from Ohio + Dan Navarro** opens, \$35
- 16 **Eddie from Ohio + Jake Armerding** opens, \$35
- 18 **Blues at the Crossroads II: Muddy & the Wolf** with *Fabulous Thunderbirds* featuring Kim Wilson + JJ Grey, James Cotton, Jody Williams, Bob Margolin, \$49.50
- 24 **Maura O'Connell** with **Erin Thomas** opening, \$29.50
- 26&27 **Gaelic Storm**, Celtic rock, \$35
- 28 **Nitty Gritty Dirt Band**—country folk, \$45

THE BARNS AT WOLF TRAP

1635 Trap Rd., Vienna, VA 22182, www.wolftrap.org

February

- 7 & 8 **Solas**, Irish, \$22, 8 pm
- 9 **Southside Johnny & the Poor Fools**, Americana \$27, 7:30 pm
- 14 **Red Molly** + guests *The Steel Wheels*, Americana \$20, 8 pm
- 27 & 28 **Celtic Crossroads**, Celtic-rooted world music, \$27, 8 pm

THE HAMILTON • NW WASHINGTON, DC

600 14th St. (14th & F), 20005; Gospel Brunch each Sunday at 10 am and 12:30 pm, \$30. www.thehamiltondc.com

Sundays

FOCUS ALEXANDRIA • ALEXANDRIA, VA

February 17—**Scott Ainslie** plus **Rick Franklin**. 2280 N. Beauregard St., 22311. \$18/\$15. Info: 703.501.6061, kay@focusmusic.org or www.focusmusic.org



Mondays

INSTITUTE OF MUSICAL TRADITIONS

ROCKVILLE, MD

MONDAYS • 7:30 PM

Saint Mark Presbyterian Church, 10701 Old Georgetown Road, 20852, www.imtfolk.org, or call 301.960.3655.

February

- 4 **Robin and Linda Williams and Their Fine Group**—robust blend of bluegrass, folk, old-time, acoustic country. \$20 advance, \$24 door; students with ID: \$16/20
- 18 **Cantrip**—Scottish trio; fiddle, bapipes and guitar. \$15/\$18; students \$12/\$15

Tuesdays

FOCUS ROCKVILLE • ROCKVILLE, MD

TUESDAYS • 8 PM

Our home is at the Unitarian Universalist Church of Rockville. Concerts are usually the second and fourth Tuesday of each month at 8 p.m. 100 Welsh Park Dr., 20850. Admission \$18/15, www.focusmusic.org, 301.275.7459

February

- 12 **Amy Speace** plus **Angel Snow**
- 26 **Billy Jonas**



FOLK CLUB OF RESTON •

HERNDON, VA

TUESDAY, FEBRUARY 26 • 7:15 PM

The *Stray Birds*—three voices in harmony; rich American folk traditions. Check the website for details at www.restonherndonfolkclub.com

Tickets: DAHurdSr@cs.com; \$11 members, \$12 non-members; Amphora Diner Deluxe, Doors open at 6. 1151 Elden St, Herndon, 20170

Wednesdays

IMT TAKOMA PARK, MD

WEDNESDAYS • 7:30 PM

Takoma Park Community Center, 7500 Maple Ave., Info: 301.960.3655, and visit www.imtfolk.org

February

- 13 **Al Parrish**—honey-voiced bass player from *Tanglefoot* is touring on his own. *NOTE*: change of venue to Saint Mark's Presbyterian Church, 10701 Old Georgetown Rd, Rockville, MD
- 27 **Lily Henley and Friends**—CD Release concert of "Words Like Yours." Passionate

CONCERTS continued

singer, songwriter and fiddler in the American and Ladino traditions. \$15 advance, \$18 door, students with ID: \$12/\$15.

Thursdays

BALDWIN'S STATION • SYKESVILLE, MD THURSDAYS • 8 PM

7618 Main St, Sykesville, MD. Accessible to people with disabilities. Info: **410.795.1041**, www.uptownconcerts.com, or uptownconcerts@gmail.com

February

- 21** *We're About Nine*—upbeat, fun and poignant; outside-the-box songwriting \$20
- 28** *Burning Bridget Cleary* — Celtic band, \$20

LIVE BLUES SERIES • SILVER SPRING, MD THURSDAYS • 7–9 PM

Live Acoustic Blues at El Golfo Restaurant, 8739 Flower Ave., 20901. Cover \$5 includes a free drink. Please check the website or e-mail for info. Takomadave@gmail.com, www.elgolforestaurant.com

Fridays

CELLAR STAGE • BALTIMORE, MD FRIDAYS • 8 PM

The Faith Community United Methodist Church, 5315 Harford Road, 21214. Info: **410.521.9099** or www.uptownconcerts@gmail.com

February

- 1** **Bill Staines + Neptune's Car**—New England native, a mainstay of folk, plus a charming duo. \$19.
- 8** *Brother Sun*—male trio; contemporary songwriting informed by gospel, blues and folk. \$21.
- 15** **Laura Byrne, Donna Long, Eamon O'Leary and Rose Flanagan**—four virtuosos share the stage...they play flute, piano, guitar and fiddle respectively. \$19.

COMMON GROUND ON THE HILL • BALTIMORE, MD FRIDAYS • 8 PM

Brown Memorial Woodbrook Presbyterian Church, 6200 North Charles St., 21212. Admission \$19, \$17 students, seniors 65+ and teens. **410.857.2771**, or www.commongroundonthehill.org

February

- 1** **Joyce Scott**, gospel, jazz, blues

March

- 1** **Tom Paxton**, world-renowned singer and songwriter

POTTER'S HOUSE BENEFIT CONCERTS WASHINGTON, DC

Potter's House, 1658 Columbia Rd NW, easy Metro access and off-street parking available. Good music, good food, for a good cause. 7 pm. Benefit concerts, \$15 suggested donation; open-mic night free. Info: **202.232.5483** or www.PottersHouseDC.org

333 COFFEEHOUSE • ANNAPOLIS, MD FRIDAY, FEBRUARY 15 • 8 PM

Jeff Warner Note: This Coffeehouse has become a function of the Annapolis Traditional Dance Society, contradancers.com/atds. The Annapolis Friends Meeting House, 351 DuBois Rd, off Bestgate Ave. Acoustic music. Dessert and coffee available in this smoke- and alcohol-free environment. Doors open at 7:30. \$10, \$8 for seniors/students. Info: **443.333.9613** or www.fsgw.org/333

Saturdays

FOCUS MOUNT VERNON • ALEXANDRIA, VA SATURDAY • 7 PM

March 2, Slaid Cleaves— St Aidan's Episcopal Church, 8531 Riverside Rd., 22308. Venue host: **Herb Cooper-Levy**. \$15 advance, \$18 door. www.focusmusic.org

COMMON GROUND ON THE HILL WESTMINSTER, MD • SATURDAYS • 8 PM

Carroll Arts Center, 91 West Main St., 21157. \$19/17. Concerts are held monthly on a Saturday. www.common-groundonthehill.org or call **410.857.2771**.

February

- 2** **Shelley Ensor**, gospel, with choir

March

- 2** **Tom Paxton**, world-renowned singer and songwriter



Classes

SCANDINAVIAN DANCE CLASSES • BETHESDA, MD EVERY TUESDAY • 7:30–9:30 PM

For beginning and advanced dancers. Beginners learn Hambo, Schottish, Waltz, Zwiefacher, and other couple turning dances. Advanced dancers learn Boda, Orsa, Föllinge, Finnskogspols, Viksta, Gammalvånster, Telespringar, Valdresspringar, and requests. Sometimes live music. Wear smooth-soled shoes for turning, not running shoes. \$5. First time free. Info: **Lisa Brooks** at **240.731.1935**, **lisa@HamboDC.org**, or **www.HamboDC.org**.

Directions: Enter NIH at Wisconsin Av. and the new Gateway Drive Visitor Entrance (south of South Dr., reachable ONLY from the north on Wisconsin Av.). Park there, or drive to the south center of NIH and park in NIH permit parking next to Building T-39. Or walk 12 minutes from the Medical Center metro stop. See map at **www.HamboDC.org**.

FIDDLE CLASS • POTOMAC VALLEY SCOTTISH FIDDLE CLUB PLEASE CHECK THE WEBSITE FOR DETAILS AND UPDATES.

Scottish tunes learned by ear, then some learned with music, followed by a potluck and jam session. Occurs monthly; for the location and teacher, check

www.potomacvalleyscottishfiddle.org For additional info, contact **Rhonda@RhondaHotop.com** or **703.992.0752**.

MUSIC, DANCE & THE ARTS AT GLEN ECHO PARK GLEN ECHO, MD

Choose from a wide variety of dance classes for all levels—includes Irish, waltz, and ballroom dancing. As well, take your musical skills to the next level—guitar, flute, bouzuki, voice, and so much more. Crafts, photography, children's classes also offered. Many classes are taught by FSGW members. See **www.glenechopark.org** for a complete schedule.



Dances

COMMUNITY/FAMILY

FSGW Family Dance See details on page 11.

CONTRA

Sundays

The FSGW Sunday Night Dances are listed on page 9.



BALTIMORE FOLK MUSIC SOCIETY • MD WEDNESDAYS • 8–10:30 PM

Beginners are always welcome. * New-dancer workshops to be held at 7:30 on the 2nd and 4th Wednesdays. Nationally-known musicians and callers appear regularly. Members \$9; non-members \$13; member/non-member students with ID \$4/\$6. Lovely Lane Church, 2200 St. Paul St., 21218. **www.brms.org**

February

- 6 **Greg Frock** calls to *Sugar Beat*—**Elke Baker** (fiddle), **Susan Brandt** (flute), and **Marc Glickman** (piano and bodhran)
- 13 **Brian Hamshar** calls to *Treble Makers*—**Emily Aubrey** (fiddle), **Robin Wilson** (flute, concertina, and saxophone), **Brenna Hogan** (hammered dulcimer and fiddle), and **Liz Donaldson** (piano).
- 20 **Michael Barraclough** calls to *Floorplay*—**Colin Cannell** (percussion), **Rya Martin** (piano), and **Paul Rosen** (fiddle, mandolin).
- 27 **Dick Bearman** calls to the *Metrognomes*—**Bob Garber** (clarinet), **Mark Vidor** (piano, accordion), and **McGregor Yatsevitch** (fiddle, mandolin).



Fridays

FRIDAY NIGHT DANCERS

GLEN ECHO PARK, MD

FRIDAYS • 8:30–11:30 PM



The Friday Night Dancers (in cooperation with the National Park Service, Montgomery County, and the Glen Echo Park Partnership for Arts and Culture) sponsor weekly contra dances to live music in the historic Glen Echo Spanish Ballroom, 7300 MacArthur Blvd. New-dancer classes at 7:30, dances at 8:30. \$10 for the lesson and dance. Ages 17 and under \$5. 17 and younger admitted free on the second Friday of the month. Info: www.fridaynightdance.org. or call 301.634.2222. On Facebook at Friday Night Dance at Glen Echo Park.

February

- 1 **Maggie Jo Saylor** calls to *Anadama* with **Amelia Mason** on fiddle, **Emily Troll** on accordion, and **Bethany Waickman** on guitar.
- 8 **DeLaura Padovan** with the fabulous *Glen Echo Open Band*
- 15 Mardi Gras dance: **Perry Shafran** calls to *Live Culture* with **Marc Glickman** (piano & bodhran), **Steve Hickman** (fiddle), **Dave Crandall** (saxophone & flute), and **John Devine** (guitar)
- 22 **Nils Fredland** with *Nor'easter*; **Cedar Stanistreet** on fiddle, **Max Newman** on guitar and mandolin, and **Julie Valimont** on piano, accordion and jaw harp.

Saturdays

SHEPHERDSTOWN DANCE • WV

1ST SATURDAYS • 8–11 PM

February 2—**Maggie Jo Saylor** calls mostly contras to *Anadama*: **Amelia Mason**, **Emily Troll**, and **Bethany Wickman**. At the War Memorial Building. Beginners' workshop, 7:30; dance at 8. All levels welcome, no partner needed. Please wear clean, soft-soled shoes to protect the floor. \$10 adults, \$7 SMD members, \$4 dancers under 12. Potluck snacks at the break. Info: www.smad.us or call Becky at 304.876.2169

VALENTINE'S AND CHOCOLATE DANCE

EXTRAVAGANZA • PIKESVILLE, MD

SATURDAY, FEBRUARY 9 • 2–11 PM

Live music for 6 hours! Janine Smith calls to Gift of the Marci. From 2-3:15, waltz workshop with Karl Senseman; 3:15–4:15, couples dancing; 4:30–6:30, advanced contras; 6:30–7:30, potluck; 7:35–7:55 style class, 8–11, evening

contra dance. On the break from 9:15–9:45: the famous Chocolate Extravaganza Contest. Bring your favorite chocolate dish for tasting and prizes. Contest categories listed at www.bfms.org. Admission: \$25 BFMS members, affiliates, \$29 nonmembers. Under 21 and full-time students with ID: \$10/15. You can attend and pay for segments of the event. (2–4:30, 4:30–6:30 and 7:30–11 pm) \$9 members, \$13 other, students \$4/6. St Mark's on the Hill Episcopal Church, 1620 Reisterstown Rd., 21209 (1/3 mile inside the Baltimore Beltway, at Exit 20 South)

RESTON CONTRA DANCE • RESTON, VA

SATURDAY, FEBRUARY 9 • 8–10:45 PM

Susan Taylor calls the annual festive Valentine dance to the music of the *June Apple Band*. Introductory workshop 7:15–8. \$9. Partner not necessary. Snacks for the break welcome (juice provided). Reston Community Center, 2310 Colts Neck Rd., in the Hunters Woods Center. Info: anote20@gmail.com

ANNAPOLIS CONTRA AND SQUARE DANCE • MD

3RD SATURDAYS • 7–10 PM

February 16—Break out of that mid-winter slump! **Kim Forry** calls to the electric music of *Broadside Kinetic*. Introductory class at 6:30; all dances taught and walked through; all ages welcome. \$10 with discounts for seniors, students, families and members of Annapolis Traditional Dance Society (ATDS). Snacks to share at the break are welcome! Friends Meeting Hall, 351 DuBois Rd., 21401. Info: **Ann Fallon** at 410.268.0231, ae Fallon@verizon.net; www.contradancers.com/atds

BLUEMONT DANCE • HILLSBORO, VA

3RD SATURDAYS THROUGH MAY • 8 PM

February 16—Check the website for details. Lesson at 7:30. \$10, \$7 for Bluemont Friends, students and seniors. At The Old Stone School; 37089 Charles Town Pike. www.bluemont.org. Info: 540.955.8186, or info@bluemont.org

LANCASTER CONTRA DANCE • PA

3RD SATURDAYS • 8–11 PM

February 16—**Andrew Bishop** calls to *Strings on Wings*. St John's Episcopal Church, 321 W. Chestnut St. Beginners' workshop 7:15; \$8/\$5. Info: Karen at 717.951.4317 or www.lancastercontra.org

FREDERICK CONTRA DANCE • FREDERICK, MD
4TH SATURDAYS • 8–11 PM

February 23—Performers yet to be announced at the time of this writing. At the Trinity School, near Harry Grove Stadium. Free beginners' workshop at 7. Adults, \$10, students \$5. Info/directions: www.contradancers.com or call **Boe Walker** at 301.694.6794

———— *ENGLISH COUNTRY* ————

Mondays

BALTIMORE FOLK MUSIC SOCIETY
ENGLISH COUNTRY DANCE • PIKESVILLE, MD
MONDAYS • 8–10:30 PM

English Country Dancing is lively movement to elegant music in a friendly, informal setting. All dances are taught and walked through. New-dancer orientation first Wednesday at 7:45. Admission \$8 Members, \$11 Non-members, \$2 student discount. St. Mark's on the Hill Parish Hall, 1620 Reisterstown Rd., 21208. Info: **Emily Aubrey** at 410.433.4419 or engdance@bfms.org

February

- 4 **Tom Spilsbury** calling to **Carl Friedman** (violin), **Dave Crandall** (winds), and **Ben Hobbs** (piano).
- 11 **Ann Fallon** calling to **Marty Taylor** (recorders, concertina), **Karin Loya** (cello), and **Liz Donaldson** (piano).
- 18 **Mike Franch** calling to **Jeff Steinberg** (violin), **Steve Epstein** (clarinet), and **Judy Meyers** (piano).
- 25 **Tropical Dance Staycation!** **Susan Taylor** calling to **Trio Con Brio: Elke Baker** (violin), **Paul Oorts** (fretted instruments), and **Jonathan Jensen** (piano).

Saturdays

ENGLISH COUNTRY DANCE • SILVER SPRING, MD
SATURDAY, FEBRUARY 9 • 8–10:45 PM

At Glen Haven Elementary School, 10900 Inwood Ave. (parking and entrance in rear). Dance to music by Peascods Gathering, calling by Bob Farrall. Beginners and singles welcome. \$5. Info: **Carl Minkus** at 301.493.6281 (cminkus@verizon.net), or **Bob Farrall** at 301.577.5018

THE LEESBURG ASSEMBLY DANCE • GREAT FALLS, VA
SATURDAY, FEBRUARY 16 • 7–10:30 PM

Check the website for the 2013 schedule. **Michael Barraclough** calls to **Alice Markham** and **Jeff Steinberg**. Re-

freshments. St. Francis Episcopal Church, 9220 Georgetown Pike, 22066. Info: **David Pacelli** at 703.757.8648, www.theleesburgassembly.org

Sundays

ECD4FUN • GLEN ECHO, MD
3RD SUNDAYS • 2:30–5:30 PM

February 17—English Country Dances For Fun is a monthly series concentrating on simpler, fun dances suitable for new dancers and dancers of other dance forms. Experienced dancers are welcome as good role models. All dances taught, walked through and called. In cooperation with the National Park Service, Montgomery County, and the Glen Echo Park Partnership for Arts and Culture. In the Ballroom Annex at Glen Echo Park. \$10. Info: www.michaelbarraclough.com/ECD4FUN or 703.992.0752.

**The FSGW English Country
Dances
are listed on Page 10.**

———— *INTERNATIONAL* ————

Sundays

ALPINE DANCERS • NEW CARROLLTON, MD
SUNDAYS, FEBRUARY 10, 24 • 4–6:30

Alpine Dancers are a performing and teaching folk dance group specializing in graceful and lively couples and trio dances from Austria, Germany, and Switzerland. Looking for energetic beginners. Free, open practice at New Carrollton Municipal Center, 6016 Princess Garden Pkwy. For info: www.alpinedancers.org, caroltraxler@yahoo.com or 301.577.3503.

Mondays

BETHESDA INTERNATIONAL FOLK DANCERS • MD
MONDAYS • 7:30–10 PM

Come join a very friendly group and learn dances from all over the world. Beginners 7:30–8, intermediate/advanced 8–10. Mostly request dancing 9:15–10. No partner necessary, all ages and levels of expertise welcome. Wood floor; mostly recorded music. Lawton Community Center, 4301 Willow Ln. 20815. Classes here require registration with Montgomery County. Forms available at the class. \$7 per class. Info: **Phyllis** or **Brandon Diamond** at 301.871.8788, www.diamonddancecircle.com, or diamonddancecircle@comcast.net

Wednesdays

COLUMBIA INTERNATIONAL FOLK DANCING • MD
WEDNESDAYS • 8–10:30 PM

Dancing is from 8:30 to 10:30 at Kahler Hall with a class at 8. Cost: \$5, Senior, \$3. Info: Ethel at **410.997.1613**, or Ed at **410.740.2309**. www.columbiafolkdancers.org

Thursdays

CHEVY CHASE INTERNATIONAL FOLK DANCERS
WASHINGTON, DC
THURSDAYS • 7:30–9:30 PM

Chevy Chase Community Center, 5601 Connecticut Ave., NW (at McKinley). Instruction and walk-through until 8:30. All levels welcome, no partner necessary. Recorded music. Leader: **Roland Forbes**. For info: **Naomi Rogers** at **301.438.0063**

CIRCLE DANCE • ARLINGTON, VA
THURSDAYS • 7:45–9:45 PM

Come and explore dances from all over the world in a spirit of meditation and joy. All dances are taught. Recorded music. Unitarian Universalist Church of Arlington, Rte 50 at George Mason Dr. Donation requested. Info: Judie David at **703.451.2595** or Vedavid@star-power.net

MOUNT VERNON INTERNATIONAL
FOLK DANCING • ALEXANDRIA, VA
THURSDAYS • 8–10 PM

Beginners to advanced—all are welcome! Easy dances 8 to 8:30, followed by requests and advanced instruction. Join our friendly, diverse group on a beautiful dance floor. No partner necessary. Donation \$4. Mt Vernon Unitarian Church, 1909 Windmill Lane, 22307. Info: Patricia at **703.535.3333** or pdw@patriciadaywilliams.com

Fridays

GREENBELT INTERNATIONAL FOLK DANCING • MD
FRIDAYS • 8:30–10:45 PM

The focus is dance from Eastern Europe and Scandinavia. No partner or experience necessary. Beautiful dance floor. Teaching 8:30 to 9:15, requests 9:15 to 10:45. \$7; \$12 on 1st Fridays (live music). Greenbelt Community Center Dance Studio, 15 Crescent Rd. 20770. Info: Larry Weiner at **301.565.0539**, larry@larryweiner.com or www.larryweiner.com/FridayDance.htm

Saturdays

CCE CEILI • HERNDON, VA
SATURDAY, FEBRUARY 9 • 7:30–10:30 PM

Music by the ***Bog Wanderers***. Check the website for updates. Lesson at 7. CCE members \$12, non-members \$15; family max. Frying Pan Farm Park Visitors Center, 2739 West Ox Rd., 20171.

Info: ccepotomac.org or Sharon Kourz, **703.631.9179**, or kourpsc@cox.net

ISRAELI

ISRAELI DANCING • CHEVY CHASE, MD
TUESDAYS • 7–10:15 PM

Instruction from 7 to 7:45. The group focuses on building a repertoire of both classic and newer Israeli dances in a friendly, welcoming atmosphere. Recorded music. Light refreshments served. Ohr Kodesh Congregation, 8300 Meadowbrook Lane, 20815. \$8/adults, \$6/students. Info: **Mike Fox** at **240.424.0805**, www.markidmike.com or markidmike@gmail.com

ISRAELI DANCING • GREENBELT, MD
SATURDAY, FEBRUARY 16 • 8–11 PM

Israeli “Oldies” party (dances before 1990). Recorded music, light refreshments. Cost \$5. Greenbelt Community Center, 15 Crescent Rd., 20770. Info: **Ben Hole**, **301.441.8213**.

MORRIS

ARLINGTON NORTHWEST MORRIS • VA
MONDAYS • 7:30–9 PM

Learn and perform the traditional morris dances of Northwest England, which combine simple footwork with power and precision. We are a welcoming group of women who practice in a great place with a wooden floor (easier on your knees) at the Unitarian Universalist Church of Arlington, Arlington Blvd & George Mason Dr. Info: suzelise@comcast.net or nwdancers@comcast.net

ROCK CREEK MORRIS WOMEN • SILVER SPRING, MD
WEDNESDAYS • 7:45–9:45 PM

Learn to dance in the ancient English morris tradition, and you’ll get all the aerobics you need. Join a strong community that dances, plays, sings, and drinks together.

Montgomery Knolls Elementary School, 807 Daleview Dr., 20901. Info: **301.927.6373**, louiseneu@earthlink.net or www.uswet.com/RCMW.html

**FOGGY BOTTOM MORRIS MEN
NW WASHINGTON, DC
THURSDAYS • 8–10 PM**

Experience the vigorous thrill of the morris and the camaraderie of a morris team! Learn and perform dances from English Cotswold villages, mummers' plays and occasional long-sword dances. We welcome new and slightly used dancers to our practices at Knock on Wood Tap Studio, 6925 Willow St., NW D.C. and/or at the pub afterwards. squire@fbmm.org, Alan Peel at 301.920.1912, www.fbmm.org

———— *SCANDINAVIAN* ————

**NORWEGIAN DANCE & POTLUCK
TAKOMA PARK, MD**

**SUNDAY, FEBRUARY 10 • POTLUCK 11:30 AM
DANCING 1 PM**

Norwegian-style house party. Bring clean shoes to wear, food to share, and \$\$ you can spare. Mesmerizing live music by foremost-in-US **Loretta Kelley** on the unique *Hardanger* fiddle (see HFAA.org). Addictive dances, some with elements like Swing or Hambo. Beginners, singles/couples, watchers/listeners all welcome. Host Loretta's phone, just in case: 301.270.4925. Info/dirs: <http://MAND.fanitull.org> or Jenny, pi@xecu.net, 301.371.4312

**SCANDINAVIAN DANCE • GREENBELT, MD
SATURDAY, FEBRUARY 16 • 7–10 PM**

Scandia DC sponsors a 3rd Saturday Dance. This month live fiddle music will feature **Andrea Hoag**, a well-known local treasure and the **Scandia DC Spelmannslag**. No partners necessary. Teaching 7- 8: Rørospols—a popular dance from Røros in Norway, followed by open dancing. Greenbelt Community Center Dance Studio (wood floor) at 15 Crescent Rd. \$7. Info: 202.333.2826, linda@scandiadc.org, www.scandiadc.org.

———— *SCOTTISH* ————

“Sic as ye gie, sic wull ye gie” –

(Scottish for: You'll get out of life as much as you put in!)

**SCOTTISH COUNTRY DANCE • BETHESDA, MD
MONDAYS • 8–10 PM**

NIH Building T-39 (Dance and Aerobic Center). \$5. Call/e-mail in advance for directions. Info: **John**

MacLeod, 301.622.5945 or blackolav@cs.com

**SCOTTISH COUNTRY DANCE • GREENBELT, MD
TUESDAYS • 8–10 PM**

Dance all year 'round at the Greenbelt Community Center. \$5. Info: www.rscds.greaterdc.org or **Jay Andrews** at andrewj@erols.com or 703.719.0596

**SCOTTISH COUNTRY DANCE • ALEXANDRIA, VA
WEDNESDAYS • 8–9:45 PM**

Learn Scottish dance at the Durant Center, 1605 Cameron St. 22314. \$5. Info: lara.bainbridge@gmail.com or elanyi@cox.net

———— *SWING/BLUES* ————

**SLOW BLUES AND SWING • GLEN ECHO, MD
THURSDAYS • 8:15–11:30 PM**

Popular weekly Blues Dance in the “back room.” Come early as it is selling out. Beginner lesson from 8:15 to 9. DJ **Mike Marcotte** and guests play incredible blues from 9 to 11:30. \$8 for lesson and dance. Sprung sold wood floor. 7300 MacArthur Blvd., 20812. Info: **Donna Barker** at 301.634.2231 or www.CapitalBlues.org

———— *WALTZ/TEA DANCE* ————

**WALTZING • GLEN ECHO PARK, MD
SUNDAY, FEBRUARY 3, 17 • 2:45–6 PM**

Dance to the music of *Taylor Among the Devils* and *Devine Comedy*, respectively, in the Spanish Ballroom. They'll play a lively mix of folk waltzes with a few other couples dances, including Swing and Foxtrot. Our beginner waltz lesson begins at 2:45 with the last 15 minutes dedicated to a more advanced move. Admission is \$10. No partner required. For info: go to www.WaltzTimeDances.org, e-mail info@WaltzTimeDances.org, or call Glen Echo Park at 301.634.2222. 7300 MacArthur Blvd., 20812.

**HOT SOCIETY DANCES • GLEN ECHO PARK, MD
SUNDAY, FEBRUARY 10, 24 • 3–6 PM**

Hot Society Orchestra of Washington, featuring music and dances from the '20s, '30s and '40s. Foxtrot, two-step, waltz, cha-cha, rumba, swing and more in the Spanish Ballroom. No partner or experience necessary. Foxtrot lesson on the 10th, rumba lesson on the 24th, both at 3:00. \$14. Info: **Dave Tucker**, 703.861.8218, www.glenechopark.org or www.hotsociety.net.

CAJUN/ZYDEC

MARDI GRAS/FAT TUESDAY ZYDECO DANCE SPANISH BALLROOM, GLEN ECHO, MD TUESDAY, FEBRUARY 12 • 8 PM

Dance to *Nathan and the Zydeco Cha Chas*. Zydeco lesson at 8, beads and fun guaranteed. 7300 MacArthur Blvd., \$18, dancingbythebayou.com, 240.506.2263.

CJ CHENIER AND THE RED HOT LOUISIANA BAND ARLINGTON, VA FRIDAY, FEBRUARY 22 • 7:30–11 PM

Zydeco dance at Artisphere, 1101 Wilson Blvd., Arlington, VA 22209; lesson at 7:30. \$20 (discounts for students and seniors).

Info: www.dancingbythebayou.com, or Michael at 240.506.2263.

Jams/Open Mics/Audience Participation

Sundays

ANNAPOLIS ACOUSTIC JAM • ANNAPOLIS, MD EVERY SUNDAY • 10 AM–12:30 PM

Indoors at the Visitor Center, Quiet Waters Park. Info: ken.i.mayer@gmail.com

SCOTTISH TRADITIONAL MUSIC JAM WHEATON, MD 1ST SUNDAYS • 2:30–5:30 PM

The Royal Mile Pub, 2407 Price Ave., 20902. Musicians welcome. Info: dcscottishsession.blogspot.com or contact Peter Walker at boghadubh@gmail.com

CABOMA JAM • ARLINGTON, VA 2ND AND 4TH SUNDAYS • 2 PM

Capitol Area Bluegrass and Old-Time Music Association (CABOMA) holds jams the 2nd and 4th Sundays of each month. Lyon Park Community Center, corner of N. Fillmore and Pershing, 22201. Info: Dave at 301.274.3441.

SACRED HARP SINGING • SANDY SPRING, MD 3RD SUNDAYS • 4–6 PM

Singing is followed by a potluck supper. Contact Kent Beck at 301.774.3183 or kent.beck@ssfs.org to confirm. Location: Small schoolhouse behind Community Building, 17801 Meetinghouse Rd, 20860, about 10 miles west of Laurel, MD.

ANDRE THIERRY AND ZYDECO MAGIC JESSUP, MD

THURSDAY, FEBRUARY 28 • 8:30–11 PM

Promising new California artist with deep Louisiana roots. Blobs Park has a huge dance floor, full kitchen and bar. 8024 Max Blobs Park Rd., 20794, \$18. www.dancingbythebayou.com, 240.506.2263



Mondays

BALKAN SINGING • TAKOMA PARK, MD EVERY MONDAY • 8 PM

Informal singing group, *Sedenka*, meets in Northwest DC/Takoma Park to sing Balkan village songs. Interested novices welcome. Info: Katya, 301.270.4175 or Katya@partan.com, or Joan at 202.363.6197.

DC BLUEGRASS UNION VFW BLUEGRASS JAM TAKOMA PARK, MD 1ST & 3RD MONDAYS • 7–10 PM

Free. Non-smoking. At Veterans of Foreign Wars Post 350, 6420 Orchard Ave. (corner of 4th Ave.), 20912, near New Hampshire and Eastern Aves. Info: VFW Post 350 at 301.270.8008 or Barb Diederich barb@barbdiederich.com

Tuesdays

NEW IRISH SESSION • HERNDON, VA TUESDAYS, 7:30–9:30 PM

Geared towards traditional playing sessions (playing by ear); open to musicians who play on the currently accepted traditional Irish instruments. Also, open to singers of Irish songs, though it basically is not a singing session. Info: Alan Carrick at 202.294.8956. At Finnigans Pub, 2310 Woodland Crossing Dr., Unit E/F, 20171, www.finnegansirish-bar.com/Herndon/home.html

**FOLK CLUB OF RESTON/HERNDON • HERNDON, VA
EVERY TUESDAY**



7:15 PM

At the Amphora Diner Deluxe, 1151 Elden St., 20170. Open-mic format. 2nd Tuesday includes 25-minute member showcase; monthly concerts usually 3rd Tuesday, price varies. Smoke-free environment. Info: www.restonherndonfolkclub.com, 703.435.2402.

**SEA CHANTEY OPEN PUB SINGS
WHEATON, MD, AND WASHINGTON, DC
1ST AND 4TH TUESDAYS • 8–10 PM**

The Ship's Company chanteymen host open-mike sea-chantey sings. No cover/minimum; arrive early for a table. Participation encouraged but not mandatory. Requests are honored if possible. Mostly *a cappella* but instruments are welcome. Info: Myron Peterson at ructic@yahoo.com or www.shipscompany.org

1st Tuesdays – American Legion Post 268, 11225 Fern St., Wheaton, MD. 20902

4th Tuesdays – Laughing Man Tavern, 1306 G St. NW, DC 20005

**SACRED HARP SINGING • SE WASHINGTON, DC
3RD TUESDAYS • 7–9 PM**

Capitol Hill Presbyterian Church, 201 4th St. SE, 20003. Some street parking is possible—less than a ten-minute walk from Capitol South and Eastern Market Metro stations. To find the singing space, go around the left/south side of the church and enter by a side door at street level. Info: 760.856.0961

Wednesdays

**SEA CHANTEY OPEN PUB SINGS
BALTIMORE AND ANNAPOLIS, MD
2ND & 3RD WEDNESDAYS • 8–10 PM**

The Ship's Company chanteymen host open-mike sea-chantey sings. Participation encouraged but not mandatory. Requests are honored if possible. Info: Myron Peterson at ructic@yahoo.com or www.shipscompany.org

2nd Wednesdays – Wharf Rat, 801 S. Anne Street (Fell's Point), Baltimore 21231

3rd Wednesdays – Galway Bay, 63 Maryland Ave, Annapolis 21401

**ARLINGTON JAM! • ARLINGTON, VA
3RD WEDNESDAYS • 7–10:30 PM**

Fiddles, guitars, all instruments welcome! Intermediate and advanced players interested in old-time, blues, Scandinavian, swing, and other styles. First Friday and third Wednesday at 1909 N. Ohio St., 22205. Info: Lilli Vincenz, 703.532.2731 or FiddlerLilli@verizon.net

**CAJUN JAM • GREENBELT, MD
4TH WEDNESDAYS • 7–9 PM**

Monthly open Cajun jam and dance. New Deal Café, 113 Centerway, Roosevelt Center, 20770. More info: 301.474.5642 or www.newdealcafe.com. Check website to confirm.

Thursdays

**IRISH TRADITIONAL/BLUEGRASS MUSIC SESSIONS
FREDERICK, MD**

EVERY THURSDAY • 7 AND 8:30 PM

At Boe's Strings, 26 S. Market St., 21701. Info and tune list at www.BoesStrings.com or Boe at 301.662.0750

**FOLK HOOT! • MT. RAINIER, MD
2ND THURSDAYS • 7–9 PM**

Bruce Hutton is hosting a traditional folk music open mic at the Urban Eats Art and Music Café at 3311 Rhode Island Ave., Mt. Rainier, MD, 20712.

More info, call Bruce at 301.802.7669, or www.facebook.com/urbaneatsmd.

**FOLKSONG SING-IN • WHEATON, MD
3RD THURSDAYS • 8–10 PM**

Join local musician **Brad Howard** every month for this musical gathering. Everyone gets a chance to lead the room in song. Bring your favorite folk tunes, and even your instruments. At the very least, bring your voice and be prepared for a great evening of song and pub-style fellowship. The Limerick Pub is at the corner of Elkin and Price, a few doors down from the Royal Mile Pub, 11301 Elkin St., 20902 www.thelimerickpub.net

Fridays

**ARLINGTON JAM! • ARLINGTON, VA
1ST FRIDAYS • 7–10:30 PM**

See Wednesday listing.

NEW LISTING

**KINGSTOWNE BLUEGRASS JAM
ALEXANDRIA, VA**

1ST AND 3RD FRIDAYS • 6–9 PM

Kingstowne Acoustic Music hosts an open bluegrass jam twice monthly. 5830 Kingstowne Center, #110. Info: 703.822.9090, www.kingstowneacousticmusic.com

**GLEN ECHO OPEN BAND • GLEN ECHO, MD
2ND FRIDAYS • 8:30–11:30 PM**

The fabulous *Glen Echo Open Band* plays for the second-Friday contra dance. All instruments and levels of ability are welcome. Find recordings, tunebook names and page numbers of tunes played by the Open Band at www.openbandonline.com. The site works best using iTunes on a PC or a Mac. Info: www.fridaynightdance.org

Saturdays

**ARCHIE EDWARDS BLUES JAM • RIVERDALE, MD
SATURDAYS • 1–5 PM**

Acoustic instruments, all skill levels and listeners welcome. 4701 Queensbury Rd, 20737, across from the Riverdale MARC train station. Ample parking. Free, but donations welcome. Info/confirmation: 301.396.3054 or www.acousticblues.com

**HAMMERED DULCIMER JAM • MCLEAN, VA
SATURDAY, FEBRUARY 23 • 1:30–4:30 PM**

Hammered dulcimer players meet monthly to swap tunes and play together; all levels welcome. The February jam is at the Dolley Madison Library, 1244 Oak Ridge Ave., 703.356.0770. Other acoustic instruments welcome. Info: Ellie at sites.google.com/site/nvhdplayers

Storytelling

**For details on the FSGW
Storyswap, see page 8**

**SUCKER FOR LOVE STORYFEST • NE
WASHINGTON, DC
FEBRUARY 14, 15, 16 • 8 PM**

6th Annual Valentine's love-fest of stories about the pleasures and perils of romance. Eight fine storytellers. Performance is at The Dance Place, 3225 8th St, 20017, \$25. More info: Stephanie@speakeasydc.org.

**COME HOME TO VASA! • LYNCHBURG, VA
SATURDAY, MARCH 9**

The Virginia Storytelling Alliance. One day only, come to an old fashioned reunion with story swaps and friends you haven't seen for a while! Liberty Mountain Conference Center. Lynchburg, VA. Details and registration: vastorytelling.org/vasa-events

Workshops, Weekends, Festivals & Special Events

**PRESIDENT'S DAY SKI DANCE WEEKEND
FEBRUARY 15–18**

Camp Harmony in the Laurel Highlands near Somerset and Seven Springs, Pennsylvania callers: **Robbin Marcus** and **Bob Mathis**; band(s)/musician(s): **Dave Wiesler**, **Laura Light** and **George Paul**. \$170–180 adults, \$80 children 3–13, \$5 infants–2 years.

**THE 31ST ANNUAL EVENING OF
VIENNESE WALTZING
SUNDAY, FEBRUARY 17 • 9–1 AM**

Tickets \$180 per person. No tickets sold at the door. White tie optional. Doors open at 8:30 pm. To request an invitation, please call 202-338-3239, or send an email to

cwestciv@yahoo.com and indicate 'request for waltz invitation' in the subject line. At the Organization of American States Ballroom. 201 18th St., NW, 20006

**CONTRA DANCE CAMP • COSTA RICA
FEBRUARY 20–27**

Contra dance winter adventure at the Pura Vida Dance Camp on a mountain ranch surrounded by lush cloud forest and indigenous reserve. Contra, salsa, Cajun, Zydeco every evening. **Kathy Anderson** calls to the *Clay-foot Strutters*. During the day, hike, ride horses, bikes or rafts, jam or lounge by the pool. Week-long trip is \$995 with seven nights lodging. www.puravidadancecamp.com, or **Willy** at 907.299.6226.

2013 MiniFest Performance Grid - Saturday, February 2, 2013

Time	Dance Tracks		Performance		Room 104	Room 108	Room 114	Room 118	Room 122	Jams	Lobby
	Aux Gym	Main Gym	Cafetorium Concerts		Roots Americana	Traditional Song	Concerts / Workshops	Concerts / Workshops	Storytelling	Room 184	
noon-1	Eva Murray calling squares Hogan's subs noon - 1	Carpathian Folk Dance Ensemble Demo & workshop noon - 1	Shenandoah Run noon - 1		DC Shape Note Singers noon - 1	The Tradition Continues Lehman, Van Bluren noon - 12:30 Cowboy Songs Wallace, Layton, Kraemer, Burns 12:30 - 1:15 Friends of the Frank Harte Memorial Singers Circle O'Malley, McKenna, Kaufman, Lewitt, Fieldman 1:15 - 2:15 Roadhouse to Rock n' Roll Chip Dixon, Phil Fox, Severn Savage 2:15 - 3	Shane O'Neal Cigar Box guitar Concert noon - 1:30 David Williams aka One String Willie Concert 1:30 - 2:45 Primal Brothers Bunch, Williams, Speal Concert 2:45 - 3:45 Washboard Extravaganza Jesse Eliot, Whyte, Wayne Kahn, Ron Good 3:45 - 5 Rigatoni Brothers Paul Doris & Friend Italian American music 5 - 6	Slaveya Balkan Women's Chorus noon - 12:45 Eva Primack Concert 12:45 - 1:30 Sidgi Dumbek Workshop 1:30 - 2:15 Sudrabavots Latvian Chorus 2:15 - 3 The Chromatics Singing Workshop 3 - 3:45 Flawn Williams Doo-Wop Workshop 3:45 - 4:30 Donna Fletcher & Pete Kraemer Blues Singing Workshop 4:30 - 5:30 Marcolivia viola/violin duo 5:30 - 6	Tim Livengood Seeing the Light noon - 12:30 Megan Hicks Groundhogs and Grimm 12:30 - 1 TBA 1 - 1:30 Twinbrook Tellers 1 Shadows 1:30 - 2 Margaret Chatham A Dark & Stormy Night 2 - 2:30 Gary Lloyd The Well-grounded Hog 2:30 - 3 Jennifer Hine Twilight Beats 3:30 Twinbrook Tellers 2 Lightning 3:30 - 4 Geraldine Buckley 4 - 4:30 TBA 4:30 - 5 TBA 5 - 5:30 Tim Livengood Seeing the Light 5:30 - 6	ESGW Gospel Sing noon - 1 Morris Chorus 1 - 2 Sea Chantreys Maritime Voices 2 - 3 Archie's Barbershop Blues 3 - 5 Irish Seisun 5-6	Morris Dancers and Rapper sword, any old time Crafts to buy Juggling Change ringing with handbells All day
1 - 2	Bob Hopkin Treble Makers 1 - 2	English Ceilidh Michael Barracough Ceilidh Band TBA 1 - 2	The Chromatics a cappella music 1 - 2		Party at Ralph's House Jeff Place, Smithsonian Folkways Archivist 1 - 2 Band TBA Ballad and Traditional Singing 2 - 3 Foodways Traditions 3 - 4 Band TBA Old Time String Band Music 4 - 5 Old-Time/Bluegrass Jam 5 - 6						
2 - 3	Perry Shafran Metronomes 2 - 3	Tango Workshop Tango Mercurio Orchestra 2 - 3	Capitol Hillbillies Jazz, blues, gospel, & jug band 2 - 3								
3 - 4	Dave Colestock Metronomes 3 - 4	English Country Dance Dan Gillespie Treble Makers 3 - 4 Scandinavian Schottis Brooks/Kahn Melissa Humming 4 - 5 Barn Dance Ann Fallon AP & Banty Rooters 5 - 6	Sarenica Serbian & Croatian 3 - 3:45 The Bog Band Irish music 3:45 - 4:30 Kensington Station 60's folk music 4:30 - 5:15 Bumper Jackson's Traditional jazz, pre-war country 5:15 - 6								
4 - 5	George Mercer Lorch Takers 4 - 5										
5 - 6	Kim Forry Open Band 5 - 6										
6-7:30	Load out Classrooms and crafts, 6-6:30 pm; load out gym and Cafetorium 10:30-11 pm	Waltz 6-7 Contra Dance 7:30 - 10:30	Dinner Break 7:30-10:30	<p>All performances in the Cafetorium are concerts. Some classroom performances are concerts, others are workshops. Please check the grid for details.</p> <p>Participatory music workshops are marked with . All dances in both gyms are participatory.</p> <p>Information for performers: Green Room is Room 140 (11:20-5:30 pm); Secure Instrument Check is Room 102 (11:30 to 6pm).</p> <p>The local (Takoma Park) Subway franchisee will sell subs, soup, muffins, cookies, soda, coffee, tea, and hot cocoa from noon to 7:30 in the Cafetorium.</p>							
7:30-10:30			Concert 7:30-10:30	<p>Evening Concert - New Century American Irish Arts Company; William Pint and Felicia Dale; more TBA</p> <p>Evening Dance - Ted Hodapp calling to AP & The Banty Rooters</p> <p>Grid last updated: January 5, 2013</p>							



10001 Boreland Court
Bristow, VA 20136

PRESORTED
FIRST CLASS MAIL
US POSTAGE PAID
ROCKVILLE, MD
PERMIT #4297

www.fsgw.org

Printed on recycled paper.

Address Service Requested

 **FIRST CLASS**

The Folklore Society of Greater Washington is a not-for-profit [Section 501(c)(3) of the IRS code] institution, and we encourage the financial contributions of our members. Contributions in excess of annual dues are welcome and may be tax-deductible. Please mail your gift to FSGW, c/o c/o Richard Aigen, 8252 The Midway, Annandale, VA 22003. Subscriptions to the Newsletter are available only outside the Greater Washington Metro area.

**FSGW IS DEDICATED TO PRESERVING AND
PROMOTING TRADITIONAL FOLK ARTS IN THE
WASHINGTON, D.C., METROPOLITAN AREA.
MEMBERSHIP IS OPEN TO ALL WHO SUPPORT THESE GOALS
UPON PAYMENT OF DUES.**

FSGW Membership Form

☐ RENEWAL ☐ NEW ADDRESS ☐ NEW MEMBERSHIP*

☐ I WANT ONLY THE ELECTRONIC COPY OF THE NEWSLETTER
(NO PAPER COPY SENT)

	INDIVIDUAL	FAMILY
1 year	<input type="checkbox"/> \$33	<input type="checkbox"/> \$45
2 years	<input type="checkbox"/> \$62	<input type="checkbox"/> \$85
3 years	<input type="checkbox"/> \$91	<input type="checkbox"/> \$125
LIFE	<input type="checkbox"/> \$550	<input type="checkbox"/> \$800
Student	<input type="checkbox"/> \$25	

☐ **Newsletter Subscription ONLY \$25**
Available ONLY to those living OUTSIDE the Greater Washington Metro area.
Newsletter Subscription carries NO membership privileges.

***If you are a new member, where did you get this newsletter?**

- ☐ at Glen Echo Park (which event? _____)
☐ Another FSGW Event (which one? _____)
☐ From a friend who is a member
☐ At my public library ☐ Other _____



Send form and check made payable to FSGW to:
FSGW Membership • A. Burnett, 10001 Boreland Court, Bristow, VA 20136

Name(s) _____

Address _____

City _____ State _____ Zip _____

Phone(s) _____

H: _____ - _____ - _____ W: _____ - _____ - _____

E-mail: _____

May we list you in our Membership Directory?
(FSGW does not provide mailing lists to any other organizations.)

☐ Yes ☐ No

☐ Yes, but do not list my:

☐ address ☐ home phone ☐ work phone ☐ e-mail