



NEWSLETTER

Volume 52, Number 10

fsgw.org

June 2016



The 36th Annual FSGW Washington Folk Festival Saturday, June 4, & Sunday, June 5 Noon to 7pm • Historic Glen Echo Park, Glen Echo, MD

As always, the Festival is free to the public and will be held rain or shine. The Festival features over 450 of the best traditional musicians, storytellers, dancers, and craftspeople from the Greater Washington Area.

The Washington Folk Festival is the Folklore Society's most ambitious annual event. The Festival mission is to showcase the rich diversity of traditional culture found in our Greater Washington area. The Festival includes five stages concurrently presenting music and dance, for a total of nearly 70 hours of live performance. It also provides a lively storytelling stage, dance workshops in the Spanish Ballroom, a craft marketplace in the old Bumper Car Pavilion, a "Meet the Performer" area for more intimate interactions periodic street performances, a pipe band parade, and many spontaneous picking sessions in Glen Echo's picnic grove.



Continued on page 4.

FSGW Concert

Takoma, DC

Orrin Star and Jimmy Gaudreau June 25 • 8-10 pm



Orrin Star invariably starts off the evening with a joke followed up by some hot licks, either on his mandolin or guitar. This time around, look for **Jimmy Gaudreau** for the mandolin licks. The two will bring a touch of old-time bluegrass to Seekers, with plenty of singing tossed into the mix.

Continued on page 6.

FSGW

INSIDE:

Advance Notices	13
Board Members/Meetings	4
Calendar	12-13
Concerts:	
June 25 Orrin Star & Jimmy Gaudreau 1 & 6	
June 3 Janie Meneely & Rob van Sante	3
Co-sponsored Dances.....	8
Editorial Policy	6
English Country Dances	9
FSGW 52 Getaway Weekend	10
House Concert:	
June 16 Richard Grainger	5
June 18 Janie Meneely & Rob van Sante ...	3
Newsletter Submissions policy	2
Other FSGW Dances	8
Sings & Storytelling.....	2
Sunday Night Dances	7
Washington Folk Festival	front page & 4
Washington Folk Festival Schedules..	22 & 23
Non-FSGW Events	
Concerts	11
Dances	16
Dance Classes.....	19
Jams/Open Mics/Sings	19
Storytelling	21
Workshops/Festivals/Weekends.....	21

FSGW Sings/Swaps/Events

FSGW OPEN SING • TAKOMA PARK, MD

FRIDAY, JUNE 3 • 8 PM NOTE: TIME CHANGE - It's EARLIER!

Singers go around the room, giving everyone a chance to sing a song, play a tune, or pass. Most songs are presented from memory, but cheat sheets often appear. Everyone is welcome. The open sings have a loose topic to encourage us to learn new songs or put the polish back on some old ones. Don't worry if you can't think of a song on the topic—come join in the fun anyway! **Theme:** Because June marks the end of the fiscal year for many organizations, **\$££ Money ¢£\$** will be the theme. This includes spending money, having money, needing money, striving to get money, and maybe even denying the power of money. Purses of gold pieces cheerfully accepted at the potluck refreshments table! This month, held at the home of **Kathie Mack**, kpmack2@gmail.com, 301-270-5367, 7208 Maple Avenue, 20912 (near Takoma Metro station on the Red Line).

FSGW GOSPEL SING • SILVER SPRING, MD

SUNDAY, JUNE 12 4-8 PM

Gospel sings are held the second Sunday of every month at various homes. Group singing starts at 4 pm and breaks for a covered dish supper at 6pm, with more singing after supper until 8 pm. Everyone is welcome! This month's Gospel Sing will be at the home of Dan Peed, co-hosted with Cary Hoagland. Dan lives in the Kemp Mill area of Silver Spring. Info/directions: **301-774-9545**.

FSGW STORYSWAP • SILVER SPRING, MD

SATURDAY, JUNE 18 • 7:30 PM

Almost midsummer, and the evenings are long: storytellers and listeners are invited to enjoy the season with shared stories and potluck snacks in the home of **Anne Sheldon**. Free. For RSVPs and directions, call **301-588-5516**.

FSGW SHAPE-NOTE SINGING • ALEXANDRIA, VA

SUNDAY, JUNE 26 • 4-8 PM

Every fourth Sunday, singers explore the rich traditions in *The Sacred Harp* (1991), *Shenandoah Harmony* (2013), and *Christian Harmony* (1959), with unaccompanied four-part singing fueled by a potluck supper. Loaner books are available, and all are welcome. Usually the singing is held upstairs in room 19 and the supper from 6-7 on the ground level of the Fellowship Hall. First Christian Church of Alexandria, 2723 King St., 22302, about a mile out from the Metro & Amtrak stations & GW Memorial. For more information contact madaly@verizon.net or **301-229-8534**.

CO-SPONSORED SINGS

CIRCLE OF LIFE SONG CIRCLE • ROCKVILLE, MD

TUESDAY JUNE 7 • 1-2:30 PM

Sing favorite songs and make new friends. The song circle is about the joy of singing, not about talent. All are welcome, regardless of experience or ability level. To volunteer as song leader or instrumentalist, email lizmilner@mindspring.com. Jewish Community Center of Greater Washington, 6125 Montrose Rd., 20852.

SCHWEINHAUT SONG CIRCLE • SILVER SPRING, MD

WEDNESDAY, JUNE 15 • 1 PM

On the third Wednesday of each month, this song circle provides a day-time opportunity to enjoy great songs, old or new, humorous or serious, timeless or topical. The song circle is about the joy of singing, not about talent. You don't have to read music, and printed words are provided for songs that have been suggested in advance. Of course, you may lead or request any song, whether or not we have printed words. All are welcome, regardless of age or experience, including instrumental accompanists. Come when you can and leave when you must, but do come to sing or just to listen! Free! Cosponsored by FSGW and Carpe Diem Arts. Margaret Schweinhaut Senior Center, 1000 Forest Glen Road, 20901. For more info or to suggest songs in advance, contact Fred Stollnitz at fstollnitz@comcast.net.

FSGW sponsors events that are intended to foster a pleasant environment and a tolerant community, and to provide a comfortable experience for all.

HOW TO SUBMIT A LISTING TO THE FSGW NEWSLETTER

1. Please look at this Newsletter and determine under what category your listing should appear. When submitting copy by email, put that category in the subject line, followed by the month. So if you want to list a contra dance, your subject line is: Dance Contra [Month]. No punctuation, please. If it's a workshop: Workshop [Month]. If it's a single concert: Concert Individual [Month] And so forth. Putting the category in the subject line makes it easier for the editor to retrieve groups of events.

2. Please submit all listings in FSGW format. All information should be submitted in the following sequence:

Event Title • City, State Abbreviation

Day of the week, Date • start time - end time

One or two sentences only. Location (+ zip code for GPS). Ticket prices.

Info: Contact Name at Phone number or email/website.

NB: The city and state appear in the header; do not repeat them in the body, but in this age of Droids and GPS units, you need to include the 5-digit zip code – it goes right after the street address. **Submit entries to newsletter@fsgw.org**

FSGW Concert
FSGW House Concert

Alexandria, VA
Silver Spring, MD



Janie Meneely & Rob van Sante

Friday, June 3 • 6:30-8:30 pm
& Saturday, June 18 • 8 pm

Chesapeake songster **Janie Meneely** and traditional balladeer **Rob van Sante** join forces for an evening of maritime music from the Bay and beyond. Commonly seen playing with the likes of **Alan Reid** (of *The Battlefield Band*) or **John Connolly** (who penned *Fiddler's Green*), Rob adds his virtuoso guitar to the array of Janie's "Bay-spun" originals, while Janie adds vocal harmonies to Rob's traditional ballads.

Janie has been singing about Chesapeake people, places and history for going on (gasp!) 30 years now, chronicling the stories of Bay watermen or poking fun at sailors' traditions. The death of her husband (**Paul diBlasi**) two years ago left her without a musical partner, so this collaboration heralds the start of something new (www.janiemeneely.com).

Dutch-born **Rob** is a guitarist of skill and subtlety. His mother was a child prodigy on piano, so it's no surprise that music has played an important part in his life. During the 1970s, '80s and '90s he toured extensively throughout Europe, North Africa and the Middle East, working with such stalwarts of the British folk and jazz scene as **Danny Thompson, Jon Strong, Tom Napper, Tom McConville, Kate Rusby, John McCusker** . . . the list goes on (www.reidvansante.com).

Both are delighted to bring you a few hours of maritime music, merriment and mayhem, and invite you to sing along.

Emma's Espresso & Wine Bar, 106 Hume Ave., Alexandria, VA 22301. \$15 donation. More info on Emma's: www.emmascoffee.com.

The duo is also performing at a house concert on **Saturday, June 18**, at 8 pm, at the home of Dallas Valley in the Burnt Mills neighborhood of Silver Spring: outside if the weather's nice (bring seating); inside if it's stormy or beastly hot. BYOB. Desserts and coffee served. \$15 donation.

For reservations and directions, call Dallas Valley at **301-807-8939** (eves), or e-mail Janie Meneely, or call Janie at **443-786-0463**.

PLEASE NOTE: FSGW Newsletter deadline NOW the 8th!

Next issue covers TWO MONTHS! July and August!

From here forward, please send newsletter submissions to editor (newsletter@fsgw.org) by the **8th of the preceding month.**



The 36th Annual FSGW Washington Folk Festival

Saturday, June 4, & Sunday, June 5
Continued from the front page.



On the bill for this year's Festival is a great mix of longtime favorites and new additions. Returning Festival mainstays include: **Ocean Orchestra**, **Warner Williams** (*Little*



Bit A Blues), **Flory Jagoda**, **Christylez Bacon**, **Flamenco Aparicio**, **Eleanor Ellis**, **Magpie**, **The Bill Baker Band**, and the **Sunshine Skiffle Band**. Among the new performers are **Blanco y Negro** (Cuban), **Cissa Paz** (Brazilian), **DC Mudd** (Blues), **Flaming Shillelaghs** (Irish), and the **Rock-A-Sonics** (Rockabilly).



You can see a full performance schedule on pages 22 and 23 of this Newsletter or go on line at www.washingtonfolkfestival.org. With the online schedule, click on any time slot and get a detailed description of each performance. It's not too late to volunteer to help at this year's Festival. Go to the Festival website and click the link.



Glen Echo Park is located at 7300 MacArthur Blvd., Glen Echo, MD. The popularity of the Festival means that onsite parking will be limited. Seasoned festivalgoers have learned to take advantage of the free satellite parking and air-conditioned shuttle buses. Satellite parking is available at the GEICO Parking Lot at 5260 Western Avenue Ave., Chevy Chase, MD, just 2 blocks from Friendship Heights Metro on the Red line.



FSGW Board 2015-2016

April Blum, President
Charlie Baum, Vice President
Jerry Stein, Treasurer
Richard Aigen, Past Treasurer
Kim Gandy, Secretary
Steve Burnett, Dance
Janie Meneely, Programs
Judy Oppenheim, Membership
Jeanne Kaplan, Publications
Ingrid Gorman, Publicity

Members-at-Large
Tim Livengood
Steve Kaufman
Steve Winick

Mini-Festival Coordinating Committee

April Blum, Mini-Fest Chair (Logistics/Dance) minifest@fsgw.org
Charlie Baum, Mini-Fest Co-Chair (Programs) cbaum@fsgw.org

Washington Folk Festival Coordinating Committee
Dwain Winters DwainFest@aol.com

president@fsgw.org
vicepresident@fsgw.org
treasurer@fsgw.org
pasttreasurer@fsgw.org
secretary@fsgw.org
dance@fsgw.org
program@fsgw.org
membership@fsgw.org
newsletter@fsgw.org
publicity@fsgw.org

board1@fsgw.org
board2@fsgw.org
board3@fsgw.org

301-422-0292
301-589-6855

571-357-2505

301-589-4008

301-422-0292
301-589-6855

301-657-2789

FSGW BOARD MEETINGS

WEDNESDAY, JUNE • 8 PM

The monthly FSGW Board meetings will be held in Classroom 201 Arcade Bldg. at Glen Echo Park, MD. All FSGW members may attend. If you wish the Board to consider a particular matter, please contact the appropriate Board member, or **April Blum** by e-mail, president@fsgw.org, or call afternoons or evenings 301-422-0292 in advance of the meeting.



Richard Grainger

British folkie, traditional and originals from Old Blighty

Thursday, June 16 • 8-10 pm

Fresh off the boat from the Mystic Sea Music Festival, British folkie **Richard Grainger** stops over in Takoma Park for a Carroll House concert full of wide-ranging traditional material (and a slew of originals) drawn from the working songs of Old Blighty.

Take a “singer with a great voice and delivery,” who also happens to be a “top drawer guitarist” and an established recording artist with a dozen albums to his credit (his latest “Hard Road To Prospect Hill” landed in Folk Radio UK’s “Best Albums of 2015”), add a glass of wine and the intimacy of someone’s living room, and you’re bound to find yourself highly entertained and better acquainted with one of England’s folk stalwarts.

Richard Grainger was born in Teesside, the industrial heart of northeast England, and raised to the sounds of early skiffle and blues until he discovered traditional music. “It was the industrial and sea ballads that really turned me on,” he says. “The sound of real people singing in a language that was my own, that I could easily relate to, in my landscape of steelworks, dock cranes, ships, trucks and cargoes. I started work in the shipping industry at the age of 15.”

Apart from his songwriting skills, he is one of the foremost interpreters of traditional song. He’ll turn to ballads learned from the likes of **Louis Killen** or **Cyril Tawney**, **George Spicer**, **Bert Lloyd** or **Ewan McColl**.

His songs inhabit the present day and the recent and distant past. On board an 18th century sailing ship, working the iron mines, fishing the North Sea, or in a drama of a lifeboat rescue, he sings with passion of the everyday lives of the workingman.

“Richard is more than purely entertaining, he leaves you with a greater appreciation of the world around us and the environment we live in.” *Bob Stern—Folk UK*

“A wonderful singer and songwriter whose pride in his rich northern heritage flows through his work like the waters of that famous river of song. Genuinely warm and amusing too!” *Folk On The Moor, Plymouth UK 2013*

www.richard-grainger.com

\$15 donation; for reservations and directions contact janiemeneely@gmail.com; or **443-786-0463**.

Orrin Star and Jimmy Gaudreau

June 25 • 8-10 pm *continued from front page*



You might laugh at Orrin's humor (he started life as a stand-up comic), but when he starts to play his music, things gets downright serious—in a good way. **Orrin Star** is an award-winning instrumentalist who combines hot picking, cool singing and a penchant for joke telling into a terrific evening of old-time, new-time, any-time music. Once described as **Arlo Guthrie** meets **Doc Watson**, he was the 1976 National Flatpicking Champion (in the largest bluegrass contest in the world), has appeared on *A Prairie Home Companion*, and has a sweeping repertoire ranging from bluegrass standards to Irish fiddle tunes to fingerstyle blues.

All this and he sings, too, getting the audience singing along as well. Don't be surprised if he doesn't drop in a bit of a recitation while he's at it.

Jimmy Gaudreau has long been regarded as one of the top bluegrass performers in the world. Since getting the call in 1969 to move to the Washington, DC, area from his native Rhode Island and join the legendary **Country Gentlemen**, he has performed with a veritable *Who's Who* of bluegrass bands and earned a reputation as a mandolin maverick with a sound and a style all his own. In 2005, Jimmy was inducted into the Society for the Preservation of Bluegrass Music in America's "Hall of Greats."

Expect a lively evening full of musical surprises and amazing prowess.

At the Seekers Church, 276 Carroll St. NE, Washington, DC (diagonally across from Takoma Metro stop). \$10 FSGW members; \$20 general public

FSGW Newsletter Editorial and Advertising Policy

The Folklore Society of Greater Washington endeavors to print copy it deems relevant to its membership and purpose as stated in its by-laws:

"The main purpose of the Society is to further the understanding, investigation, appreciation, and performance of the traditional folk music and folklore of the American people."

- All copy (except ads) must be submitted by e-mail to newsletter@fsgw.org in text format in the body of the e-mail by the 8th of the preceding month.
- All listings must be submitted in the format set out in paragraph 2 above. The format is also on our website (fsgw.org). Just click on Newsletter and look for a paragraph in green.
- The Editor reserves the right to edit or omit copy as necessary. Ad content must be approved by the Editor.

Basic Ad charges: 1/4 page ads (3.4" x 4.5" or 7.25" x 2.5"): \$65 for one month, \$120 for two. Commercial business: \$8 for 10 words. Non-commercial and individual: \$4 for 10 words. 25% discount for any single ad placed in 11 consecutive issues (one year) and paid in advance. We will work with you on larger ads. Copy, with check made payable to FSGW, must be received by the newsletter deadline. Mail to **FSGW, PO Box 323, Cabin John, MD 20818.**

Jeanne Kaplan, Editor • newsletter@fsgw.org
Design & Layout: Jennifer Woods GRAPHICS • Silver Spring, MD • 301-587-7174

FSGW SUNDAY NIGHT DANCES

AT GLEN ECHO PARK, MD • SPANISH BALLROOM

CONTRAS AND SQUARES • 7:30-10:30 PM

INTRODUCTORY LESSON EVERY SUNDAY • 7-7:30 PM

Join us for an evening of dancing at Glen Echo Park. Every Sunday, FSGW (in cooperation with the National Park Service, Montgomery County, and the Glen Echo Park Partnership for Arts and Culture) presents contras and squares danced to live music by fabulous bands with entertaining callers. Experienced and new dancers welcome; no partner needed. **Welcome/Orientation session every Sunday at 7. Come early for an introduction to the basic moves.** Dances often become more challenging as the evening progresses. Bring water or a sports drink, and dress in layers. Smooth-soled shoes are kindest on your knees and ankles when turning. Info: **Penelope Weinberger** or **Steve Burnett**; dance@fsgw.org

Admission: \$10 for FSGW, BFMS, CDSS, and ATDS Members
\$5 youth (with student ID if over 17)
\$13 for the general public

June 5– Nils Fredland with *Elixir*

Venue: *Spanish Ballroom*

Elixir blends driving fiddle and guitar with the rich texture and rhythmic excitement of a full horn section, deftly weaving brassy riffs and daring solos in and out of traditional Irish, French Canadian and New England tunes. *Elixir* is **Nils Fredland** (calling, trombone, vocals), **Ethan Hazzard-Watkins** (fiddle), **Jesse Hazzard-Watkins** (trumpet, flugelhorn), **Anna Patton** (clarinet, vocals) and **Owen Morrison** (guitar, foot percussion).



June 12 - Ann Fallon calls with *Gigmeisters*

Venue: *Spanish Ballroom*

The *Gigmeisters* can move us with their high-energy rhythmic intensity. The wonderful **Ann Fallon** will get us moving with some great dances. Band Lineup: **Alexander Mitchell** (fiddle), **Paul Oorts** (mandolin, banjo, accordion), **Dave Wiesler** (piano and guitar), **Ralph Gordon** (bass).



June 19 - Kappy Laning with *Dance du Jour*

Venue: *Bumper Car Pavilion*

Kappy Laning calls to *Dance du Jour*. **Alexander Mitchell** (Fiddle), **Ralph Gordon** (bass) and **Liz Donaldson** (piano, accordion) come together to form *Dance du Jour*.



June 26 - Perry Shafran with the *Boneshakers*

Venue: *Bumper Car Pavilion*

Our good friend **Perry Shafran** comes down from Baltimore to call a great dance out in the BCP. *Boneshakers*: **Joe DeZarn** (fiddle), **Gina Faber**, (mandolin), **Paul Hammerton** (guitar) and **Ralph Gordon** (bass).



FSGW DANCE EVENTS

FSGW FAMILY DANCE

SUNDAY, JUNE 12 · 3-5 PM

The family dance returns for a great dance to bring the little ones out onto the dance floor. Family dance favorite **Eric Maring** will return with musical friends to make this a great dance for all ages. Fun for the whole family! In the Glen Echo Spanish Ballroom Backroom. No experience necessary – an experienced (and patient) family dance leader will make sure that everyone has a great time. \$5 for ages 4 and older.



FSGW SQUARE DANCE

THE GREAT AMERICAN SQUARE DANCE REVIVAL, PART XLIV · WASHINGTON, DC



SATURDAY, JUNE 18, 8:30-11:30 PM

The DC Square Dance Collective is celebrating 5 wildly successful years of presenting traditional Appalachian Square Dances! Square Dance tunes played by real-deal musicians.

This month **The New Hoosier Broadcaster** from Indiana will crank out the dance tunes. A real live Square Dance Caller, **T-Claw**, shows you how it's done and will have you up and do-si-doing in no time flat. Come see what it's all about, right in the heart of DC on a swingin' Saturday night. All are welcome – young and old, brand new and experienced dancers, hipsters and total outta the loopers. No partner, lessons, overalls, or fancy dress needed. Location: Saint Stephen's Church, 1525 Newton St. NW, 20010, near the Columbia Heights Metro. \$5 at the door. More info: visit www.dcsquaredance.com



FSGW Co-SPONSORED DANCE EVENTS

SILVER SPRING CONTRA/SQUARE DANCE

THURSDAY, JUNE 9 · 7:30-10 PM · (7-7:30 LESSON)

Caller **Dugan Murphy** with band **The High Drive** (David Knight, Dave Wiesler, Paul Oorts). Great Hall of the SS Civic Bldg, One Veterans Plaza, 20910. Free parking at 801 Ellsworth Dr. Introductory workshop at 7. Co-sponsored by FSGW, Carpe Diem Arts, and Montgomery County Rec Dept. \$8 for FSGW/BFMS/CDSS members. \$10 adults, \$5 students. First timers free. Info: Rachael Erichsen at **757-329-3714** or Busy Graham at busygraham@gmail.com.



GLEN ECHO INTERNATIONAL FOLKDANCERS · MD

THURSDAYS · 7:30-10:45 PM

See the listing under International Dances on page 16.

FSGW English Country Dances

Glen Echo, MD • Wednesdays • 8–10:30 pm

Dance on a wood floor in the climate-controlled community room of the Glen Echo Town Hall, 6106 Harvard St., 20812. Bring clean, non-scuffing shoes for dancing. Cheerful, patient, talented callers are accompanied by top-notch musicians—every Wednesday a different and delightful mix of instruments, including piano, fiddle, flute, oboe, concertina, bassoon, cello, viola, and recorder. Light refreshments served at the break. Experienced and new dancers welcome. No partner required. **Info: Stephanie Smith 301-229-3577 or Roger Broseus English@fsgw.org**

Admission: \$10 for FSGW members, \$12 for non-members.

June

1

Susan Taylor calls the dances to the music of **Tina Chancey** (fiddle), **Colleen Reed** (flute), and **Jonathan Jensen** (piano)



8

Dan Gillespie calls the dances while **Susan Brandt** (flute), **Bruce Edwards** (bassoon and concertina), and **Melissa Running** (piano) make the music



15

Stephanie Smith leads the dances while **Jeff Steinberg** (fiddle), **Paul Oorts** (mandolin and accordion), and **Liz Donaldson** (piano) play the tunes



22

Carol Marsh calls to the playing of **Becky Ross** (fiddle), **Carrie Rose** (flute), and **Melissa Running** (piano)



LISA NULL is accepting a few new voice students: basic vocal techniques, coaching in traditional styles. Downtown Silver Spring. FREE mutual interview! enul@starpower.net or 301-587-2286

PAID ADVERTISEMENT

29

Liz Donaldson calls while **Anna Rain** (recorders), **David Knight** (fiddle), and **Ralph Gordon** (cello) play



33rd ANNUAL TINNER HILL BLUES FESTIVAL
FALLS CHURCH, VA 2016
FRI. JUNE 10 - SUN. JUNE 12
ALL BLUES. ALL WEEKEND. ALL OVER TOWN!

BLUES BREW BBQ
Friday, June 10
Blues & Soul Divas: Gaye • Mabel • Trudy
State Theatre • 220 N. Washington St. • Falls Church, VA
Tickets: www.thestatetheatre.com

Saturday, June 11
All-Day Concert in The Park
Victor Wainwright & The WildRoots
Mac Arnold & Plate Full O' Blues
The Andy Poxon Band
Charlie Sayles & The Blues Disciples with Tony Fazio
Carly Harvey with Kiss & Ride
Mike Terpak Blues Explosion
Craft Beer • BBQ • Vendors • Films • Discussions • Kids' Programs
Cherry Hill Park • 223 Little Falls St. • Falls Church, VA
Tickets: www.eventbrite.com

Sunday, June 12
Old-Fashioned Blues & Gospel Concert
108 Tinner Hill St. • Falls Church, VA
FREE Admission • BYO picnic lunch & a blanket
Complimentary non-alcoholic beverages • Wear a fancy hat!

f WWW.TINNERHILL.ORG

PAID ADVERTISEMENT

Planning Underway for the 52nd Annual FSGW Getaway

We're working hard on planning for the **52nd Annual FSGW Getaway**, to be held **September 23-26** at the **West River Conference Center** on the Chesapeake Bay, and we hope you will be joining us! The Getaway is a bit earlier than usual this year, so do make a note of the dates. Kids are especially welcome!



Larry Kaplan
Geoff Kaufman



Sally Rogers



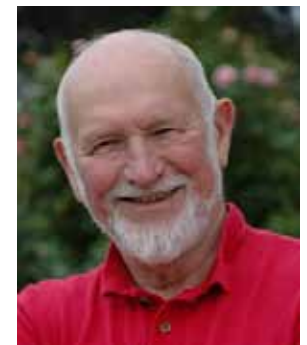
Steve Cormier



Sara Lynch-Thomason
David Jones



Bare Bones



We have a great lineup of special guests this year: We're delighted to welcome back **Sally Rogers**, a marvelous songwriter and singer of traditional and contemporary songs. British-born **David Jones** presents music-hall songs, stories, sea songs and ballads that will make you laugh or melt your heart. **Larry Kaplan** is a fine guitarist and singer-songwriter with a maritime bent. If you like songs of cowboys and other working men, **Steve Cormier** will fill the bill. **Geoff Kaufman**, a shanty-man at Mystic Seaport, will share songs of New England and the sea. **Sara Lynch-Thomason** comes from Asheville, NC, with lots of Appalachian ballads and regional songs. And to top it all off, the trio **Bare Bones** (**Bill and Rebecca Kimmons** and their "spare rib" **Dock Cutlip**) will bring us exquisite a cappella harmonies and gospel songs.

The Program Committee would like your help. We always try to tailor the Getaway program to the interests of those attending, so please let us know if you plan to attend this year, and what workshops you would like to see or take part in. Is there something you enjoyed in the past you would like to see repeated (or not)? Do you have a new idea we should try? Please contact **Nancy King** (nlking2@verizon.net), **Carly Gewirz** (gewirz@cox.net or 703-631-9655), **Kathie Mack** (kpmack2@gmail.com), or **Lisa Null** (enul@starpower.net) with your suggestions.

The Getaway is a wonderful gathering of folk music friends from near and far, and we can promise a memorable weekend. We're looking forward to seeing you all at the Getaway! Stay tuned; **registration opens in July**.

Concerts

CONCERT SERIES

AMP BY STRATHMORE, NORTH BETHESDA, MD

11810 Grand Park Ave, 20852. www.ampbystrathmore.com

HENRY BUTLER

FRIDAY, JUNE 3 • 8 PM

New Orleans blues pianist Henry Butler, who has been called "arguably the greatest living proponent of the classic New Orleans piano tradition" by All Music Guide. \$30-40.

TRIO CALIENTE

FRIDAY, JUNE 10 • 8 PM

Trio Caliente is a Wammie-Award-Winning Latin band, drawing on tango, rumba, bossa nova, flamenco and jazz. Bring your dancing shoes; \$20-30.

BALDWIN'S STATION • SYKESVILLE, MD

7618 Main St., 21784. 410-795-1041.

www.uptownconcerts.com

ROBIN BULLOCK

THURSDAY, JUNE 2 • 8 PM

Robin Bullock is a prolific composer and multi-instrumentalist, whose virtuosity on guitar, cittern and mandolin blends the ancient melodies of the Celtic lands and their vigorous Appalachian descendants into one powerful musical vision. \$20.

ROD MACDONALD

THURSDAY, JUNE 16 • 8 PM

Rod MacDonald, much-covered songwriter since his days in Greenwich Village, continues to craft singable and topical songs that will last for generations. \$20.

BIRCHMERE CONCERT HALL • ALEXANDRIA, VA

3701 Mt. Vernon Ave., 22305. All shows at 7:30 pm.

Info, including ticket prices: birchmere.com.

June

- 1 Peter Wolf & the *Midnight Travelers*, blues rock
- 8 Joshua Radin, solo acoustic
- 15 *Boy & Bear*, Australian folkrock
- 18 Al Stewart w/guest Marc Macisso
- 21& 22 Shawn Colvin and Steve Earle

FOCUS



For more info FocusMusic.org

WILLIE AND HIS CHAPERONES (PLUS OPEN MIC)

BEALLSVILLE, MD

SUNDAY, JUNE 19 • 3 PM

Willie and His Chaperones play country and rockabilly. Jay Keating coordinates the open mic. Am Kolel Sanctuary and Retreat Center 19520 Darnestown Rd., 20839. Suggested donation \$5-\$15. Info: Scott Moore 301-461-3600.

Newsletter submissions: See instructions on page 2

BILL STAINES, PLUS LYNN HOLLYFIELD • ALEXANDRIA, VA

SUNDAY, JUNE 26 • 7 PM

For more than 40 years, Bill Staines has traveled across North America, singing his songs and delighting audiences at festivals, folksong societies, colleges, concerts, clubs, and coffee-houses. Blend a powerful, passionate singer, a crisp, acoustic guitar player, and a warm heart and you will have singer-songwriter, Lynn Hollyfield. George Washington Masonic Memorial, 101 Callahan Dr., 22301. \$15 adv./\$18 door. Info: Herb Cooper-Levy 703-380-3151.

THE HAMILTON • WASHINGTON, DC

600 14th St NW, 20005. Info, including ticket prices and times: thehamiltondc.com

MARCIA BALL

AWARD-WINNING TEXAS BLUES PIANIST/VOCALIST.

SATURDAY, JUNE 4 • 8:30 PM

MASTERS OF THE STEEL STRING GUITAR

TUESDAY, JUNE 7 • 7:30 PM

Masters of the Steel String Guitar: Jerry Douglas, Albert Lee, and Wayne Henderson. Benefit for the National Council for the Traditional Arts, Silver Spring-based organization dedicated to the presentation and documentation of folk and traditional arts in the US for 76 years. \$25/60/100.

GYPSY SALLY'S • NW DC

JIMMY THACKERY & THE DRIVERS

THURSDAY, JUNE 9 • 8 PM

Jimmy Thackery & the Drivers + opener *Cathy Ponton King Band* play rockin' blues at Gypsy Sally's, 3401 K St., NW DC; \$18/20; gypsysallys.com

WEEKEND BLUEGRASS CONCERT SERIES • HERNDON, VA

Both concerts held at Holy Cross Lutheran Church, 1090 Sterling Rd., 20170. More info: Bob Thompson 703-435-8377 or kd4fue2@verizon.net.

JIMMY GAUDREAU AND MOONDI KLEIN


SATURDAY, JUNE 4 • 7:30 PM - 9:30 PM

Two legendary pickers from the world of bluegrass, performing as a duo, are a must see as their mastery of guitar and mandolin is amazing. Their vocals and off-the-wall humor are something must-see. Holy Cross Lutheran Church, 1090 Sterling Road, 20170, \$15 (children 12 and under free).

DEAD MEN'S HOLLOW

SATURDAY, JUNE 11 • 7:30-9:30 PM

Dead Men's Hollow characterizes their music as "Acoustic Americana," as they encompass such genres as bluegrass, country, Appalachian and blues, just to name a few. Magnificent three-part female vocal harmony is the centerpiece of this eclectic group. Holy Cross Lutheran Church, 1090 Sterling Road, 20170, \$15 (children 12 and under free).

SUNDAY	MONDAY	TUESDAY	WEDNESDAY
<h1>June 2016</h1> <p><i>All times are PM, unless noted otherwise.</i></p>			<p>1</p> <p>7:30 Arlington Jam 7:30 Wheaton Trad Session 8 FSGW ENGLISH COUNTRY DANCE 8 FSGW BOARD MEETING 8 Baltimore Contra Dance 8 Columbia Folk Dancers 8 Alexandria Scottish Country Dance</p>
<p style="text-align: right;">5</p> <p>10 am Annapolis Jam 11 am DC Bluegrass Jam 7:30 FSGW CONTRA DANCE NILS FREDLAND WITH <i>ELIXIR</i></p> <p style="text-align: center;">WASHINGTON FOLK FESTIVAL</p>	<p style="text-align: right;">6</p> <p>7 DC Bluegrass Jam 7:30 Bethesda Int'l Folk Dance 8 Balkan Singing 8 Wheaton Chantey Sing 8 Baltimore English Country Dance 8 Bethesda Scottish Country Dance</p>	<p style="text-align: right;">7</p> <p>7 Chevy Chase Israeli Dance 7:15 Reston/Herndon Folk Club 7:30 Hamilton: Masters of the Steel String Guitar 8 Greenbelt Scottish Country Dance</p>	<p style="text-align: right;">8</p> <p>7:30 Wheaton Trad Session 8 Baltimore Sea Chanteys 8 FSGW ENGLISH COUNTRY DANCE 8 Baltimore Contra Dance 8 Columbia Folk Dancers 8 Alexandria Scottish Country Dance</p> <p style="text-align: center;">FSGW NEWSLETTER DEADLINE FOR JULY AND AUGUST</p>
<p style="text-align: right;">12</p> <p>10 am Annapolis Jam 2 CABOMA Jam 2 Silver Spring Country Gospel Jam 3:30 Glen Echo Waltz 3 FSGW FAMILY DANCE 4 FSGW GOSPEL SING 7:30 FSGW CONTRA DANCE ANN FALLON WITH <i>GIGMEISTERS</i></p> <p style="text-align: center;">Tinner Hill Blues Festival</p>	<p style="text-align: right;">13</p> <p>7:30 Bethesda Int'l Folk Dance 8 Balkan Singing 8 Wheaton Chantey Sing 8 Baltimore English Country Dance 8 Bethesda Scottish Country Dance</p>	<p style="text-align: right;">14</p> <p style="text-align: center;">Flag Day</p> <p>7 Chevy Chase Israeli Dance 7 Arlington Israeli Dance 7:15 Reston/Herndon Folk Club Concert: Cosy Sheridan 8 Greenbelt Scottish Country Dance</p> 	<p style="text-align: right;">15</p> <p>1 FSGW SCHWEINHAUT SONG CIRCLE 7:30 Wheaton Trad Session 7:30 Arlington Jam 8 Annapolis Sea Chanteys 8 FSGW ENGLISH COUNTRY DANCE 8 Baltimore Contra Dance 8 Columbia Folk Dancers 8 Alexandria Scottish Country Dance</p>
<p style="text-align: right;">19</p> <p style="text-align: center;">Father's Day</p> <p>10 am Annapolis Jam 3 FOCUS Beallsville, MD Willie and His Chaperones 4 Sandy Spring Sacred Harp 5 Oakton Shape Note Sing 7:30 FSGW CONTRA DANCE KAPPY LANING WITH <i>DANCE DU JOUR</i></p>	<p style="text-align: right;">20</p> <p>7 DC Bluegrass Jam 7:30 Bethesda Int'l Folk Dance 8 Balkan Singing 8 Wheaton Chantey Sing 8 Baltimore English Country Dance 8 Bethesda Scottish Country Dance</p>	<p style="text-align: right;">21</p> <p>6:30 Revels Community Sing 7 DC Shape Note Sing 7 Chevy Chase Israeli Dance 7:15 Reston/Herndon Folk Club 7:30 Birchmere: Shawn Colvin and Steve Earle 8 Greenbelt Scottish Country Dance</p>	<p style="text-align: right;">22</p> <p>7 Cajun Jam, Greenbelt 7:30 Wheaton Trad Session 7:30 Birchmere: Shawn Colvin and Steve Earle 8 DC Sea Chanteys 8 FSGW ENGLISH COUNTRY DANCE 8 Baltimore Contra Dance 8 Columbia Folk Dancers 8 Alexandria Scottish Country Dance</p>
<p style="text-align: right;">26</p> <p>10 am Annapolis Jam 2 CABOMA Jam 2 Alexandria Scottish Jam 3:30 Glen Echo Waltz 4 FSGW SHAPE-NOTE SING 7 FOCUS Alexandria: Bill Staines, plus Lynn Hollyfield 7:30 FSGW CONTRA DANCE PERRY SHAFRAN WITH TBD</p>	<p style="text-align: right;">27</p> <p>7:30 Bethesda Int'l Folk Dance 8 Balkan Singing 8 Wheaton Chantey Sing 8 Baltimore English Country Dance 8 Bethesda Scottish Country Dance</p>	<p style="text-align: right;">28</p> <p>7 Arlington Israeli Dance 7 Chevy Chase Israeli Dance 7:15 Reston/Herndon Folk Club 8 Greenbelt Scottish Country Dance</p>	<p style="text-align: right;">29</p> <p>7:30 Wheaton Trad Session 8 FSGW ENGLISH COUNTRY DANCE 8 Baltimore Contra Dance 8 Columbia Folk Dancers 8 Alexandria Scottish Country Dance</p> <p style="text-align: center;">SMITHSONIAN FESTIVAL OF AMERICAN FOLKLIFE</p>

THURSDAY	FRIDAY	SATURDAY
2	3	4
6:30 Harrisonburg, VA Family Dance 7 GWCC Set & Ceili Dance Class 7:30 Opera: Rain Follows the Plow 7:30 GLEN ECHO INT'L FOLK DANCE 8 Baldwin Station: Robin Bullock 8 Mt. Vernon Int'l Folk Dance 8:15 Back Room Blues Dance	6:30 FSGW CONCERT: JANIE MENEELY & ROB VAN SANTE 8 AMP by Strathmore: Henry Butler 8 Wolf Trap: John Prine and Patty Griffin 8 FSGW OPEN SING 8:30 Friday Night Contra Dance 8:30 Greenbelt Int'l Folk Dance	Washington Folk Festival 4 9 am Concert: Washington Revels Gallery Voices 11:45 am & 2:15 pm Concert: Washington Revels Maritime Voices 1 Archie Edwards Blues Jam 4 Berryville Shape Note Sing 6 The Culkin School of Traditional Irish Dance 6:30 Norwegian Potluck & Dance 7:30 Weekend Bluegrass Concert: Jimmy Gaudreau & Moondi Klein 8 Concert: Washington Balalaika Society Orchestra 8:30 Hamilton: Marcia Ball
9	10	11
6 Front Royal, VA Family Dance 7:30 FSGW SILVER SPRING CONTRA/SQUARE DANCE 7:30 GLEN ECHO INT'L FOLK DANCE 8 Mt. Vernon Int'l Folk Dance 8:15 Back Room Blues Dance	7:30 Harley String Band concert Annandale, VA 8 AMP by Strathmore: Trio Caliente 8:30 Friday Night Contra Dance Glen Echo Open Band 8:30 Greenbelt Int'l Folk Dance Tinner Hill Blues Festival	11 1 Archie Edwards Blues Jam 2:30 Kensington Spelmanslag Concert: Jonathan Byrd + Mark Allen Berube 6 Weekened Bluegrass 7:30 Concert: Dead Men's Hollow Baltimore Contra/Square Dance Tinner Hill Blues Festival
16	17	18
6:30 Harrisonburg, VA Family Dance 7:30 GLEN ECHO INT'L FOLK DANCE 7:30 Arlington Circle Dance 8 Wheaton Folksong Sing-In 8 Baldwin's Station: Rod MacDonald 8 FSGW HOUSE CONCERT: RICHARD GRAINGER 8 Mt. Vernon Int'l Folk Dance 8:15 Back Room Blues Dance	7:30 333 Coffeehouse: Janie Meneely & Rob van Sante 8:30 Friday Night Contra Dance 8:30 Greenbelt Int'l Folk Dance	1 Archie Edwards Blues Jam 6:30 Annapolis Contra Dance 7 Lancaster, PA Contra Dance 7:30 Leesburg Assembly Dance 7:30 FSGW STORYSWAP 8 FSGW HOUSE CONCERT: JANIE MENEELY & ROB VAN SANTE 8:30 FSGW SQUARE DANCE
23	24	25
7 Seldom Scene concert, Vienna, VA 7:30 GLEN ECHO INT'L FOLK DANCE 8 Wolf Trap: Riverdance 8 Mt. Vernon Int'l Folk Dance 8:15 Back Room Blues Dance	8 Wolf Trap: Riverdance 8:30 Friday Night Contra Dance 8:30 Greenbelt Int'l Folk Dance	1 Archie Edwards Blues Jam 2:30 Kensington Spelmanslag 5 Concert: Taylor Pie 8 Wolf Trap: Riverdance 8 Frederick MD Contra dance 8 FSGW Concert: ORRIN STAR AND JIMMY GAUDREAU
30	July 1	July 2
7:30 GLEN ECHO INT'L FOLK DANCE 7:30 Arlington Circle Dance 8 Mt. Vernon Int'l Folk Dance 8:15 Back Room Blues Dance SMITHSONIAN FESTIVAL OF AMERICAN FOLKLIFE	8:30 Friday Night Contra Dance 8:30 Greenbelt Int'l Folk Dance SMITHSONIAN FESTIVAL OF AMERICAN FOLKLIFE	8 Wolf Trap: Mary Chapin Carpenter SMITHSONIAN FESTIVAL OF AMERICAN FOLKLIFE

FSGW

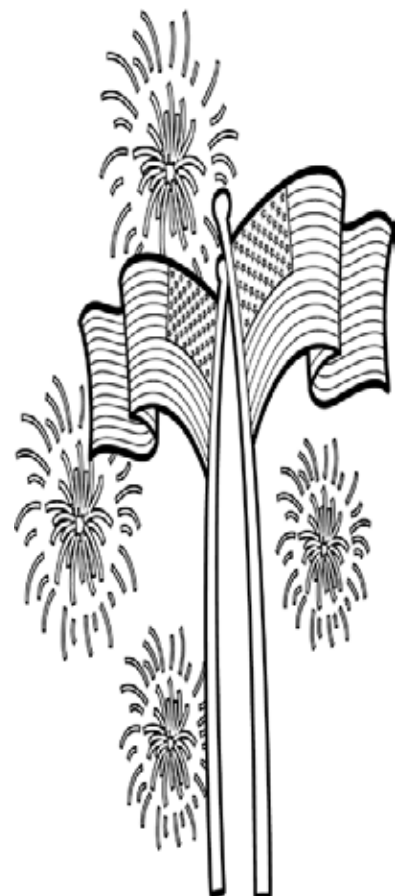
Advance Notice

Special Event
Saturday Sep 17 • 7 PM
JOHN ROBERTS & DEB COWAN
 Seekers Church Takoma, DC

Friday, September 23, thru
Monday, September 26
52ND ANNUAL FSGW GETAWAY
 West River Conference Center
 West River, MD

2017

Saturday, February 4, 2017
FSGW ANNUAL MINI FEST
 Takoma Park Middle School, MD
 Noon to 10:30 pm.



CONCERTS *continued***WOLF TRAP • VIENNA, VA**

Wolf Trap Filene Center
1551 Trap Road, 22182. Info: wolftrap.org.

JOHN PRINE & PATTY GRIFFIN**FRIDAY, JUNE 3 • 8 PM**

Two noted singer-songwriters who fuse folk, country and pop. You'll leave the show singing their songs; \$25-75.

RIVERDANCE 20TH ANNIVERSARY WORLD TOUR**THURSDAY – SUNDAY, JUNE 23-26 • 8 PM**

The show that sparked the explosion in percussive dance. 2 pm matinees Saturday and Sunday. \$20-75.

RAY LAMONTAGNE, THE OUROBOROS TOUR 2016**SUNDAY, JUNE 19 • 8 PM**

Ray LaMontagne, *the Ouroboros Tour 2016* w/members of *My Morning Jacket*.

MARY CHAPIN CARPENTER**SATURDAY, JULY 2 • 8 PM****JAMMIN' JAVA • VIENNA, VA**

227 E. Maple Ave., jamminjava.com.

RAIN FOLLOWS THE PLOW • VIENNA, VA**THURSDAY, JUNE 2 • 7:30 PM**

Stage production based on dust bowl stories composed by **Steve Coffee** and performed by him, fellow members of *Harley String Band*, and a large cast. \$15.

ERIC BRACE & PETER COOPER • VIENNA, VA**FRIDAY, JUNE 3 • 7:20 PM**

\$15; rescheduled from January.

INDIVIDUAL CONCERTS**WASHINGTON REVELS CONCERTS**

Info: www.revelsdc.org.

WASHINGTON REVELS GALLERY VOICES • CHEVERLY, MD**SATURDAY, JUNE 4, 9 AM-NOON**

Outdoor shopping and a tapestry of a cappella songs. At the Cheverly Market. Free. Cheverly Community Center, 6401 Forest Road, 20785.

WASHINGTON REVELS MARITIME VOICES • POTOMAC, MD**SATURDAY, JUNE 4 • 11:45 & 2:15**

Songs of ships, the canal and more. Free. Great Falls Tavern/Visitor Center, 11710 MacArthur Blvd., 20854.



**IRELAND 100: CELEBRATING A CENTURY
OF IRISH ARTS & CULTURE • MULTIPLE PERFORMERS
KENNEDY CENTER, NW, DC • JUNE 1-5**

Festival highlighting Irish culture and its relationship to America. The festival includes dozens of performances from some of Ireland's best contemporary musicians, dancers, and theater companies. Many free music and dance performances are on the Millennium Stage or the Outdoor Green Space. 2700 F St., 20566. Info: kennedy-center.org/festivals/ireland/index

**THE CULKIN SCHOOL OF TRADITIONAL IRISH DANCE • DC
SATURDAY, JUNE 4 • 6 PM**

Directed by **Sean Culkín**, the school preserves the tradition of Irish music and dance and passes it on to new generations of dancers throughout the Washington-Baltimore area. Join them for a free step class beginning at 5 pm, no experience necessary! (or watch them perform at 6). Free admission. Kennedy Center, Millennium Stage, 2700 F St. NW, 20566.

CATOCTIN MOUNTAIN HWY • MT. AIRY, MD**FRIDAY, JUNE 3 • 5:30 PM**

Catoctin Mountain Hwy at Linganore Winecellars, 13601 Glissans Mill Rd., 21771

DOUG ALAN WILCOX • FREDERICK, MD**FRIDAY, JUNE 3 • 8 PM**

Singer-songwriter Doug Alan Wilcox, Frederick Coffee Co., 100 N. East St.

**WASHINGTON BALALAIKA SOCIETY ORCHESTRA
SPRING CONCERT • ROCKVILLE, MD**

SATURDAY, JUNE 4 • 8 PM

The Washington Balalaika Society presents its springs concert with guest domra virtuoso **Peter Omelchenko**. Tickets: \$25 adults. \$20 seniors. \$15 students. Under 12 free. F. Scott Fitzgerald Theatre, 603 Edmonston Dr., 20851.

19TH STREET BAND • POTOMAC, MD**WEDNESDAY, JUNE 8 • 8 PM**

At at new Irish pub Lahinch Tavern, 7747 Tuckerman Lane.

CHARM CITY JUNCTION • BALTIMORE, MD**THURSDAY, JUNE 9 • 7:30 PM**

+ opener *Horse County* at Creative Alliance, 3134 Eastern Ave.; \$22/19+3door; Creativealliance.org

HARLEY STRING BAND • ANNANDALE, VA**FRIDAY, JUNE 10 • 7:30 PM**

Fine harmonies and picking from the trio at Mason District Park Amphitheatre, 6621 Columbia Pike, 22003.

JONATHAN BYRD & THE PICKUP COWBOYS**HOUSE CONCERT • ROCKVILLE, MD****SATURDAY, JUNE 11 • 6 PM**

+ **Mark Allen Berube** for Moore Music house concert;; \$20 suggested donation; Reservations required: 301-309-0983 or scott@mooremusic.org

RUUT + IONA • WFMA SHOWCASE • BETHESDA, MD**SUNDAY, JUNE 12 • 6 PM**Positano Ristorante Italiano, 4948Fairmont Ave., 20814; \$15/10mem; wfma.net.**PATSY'S HONK TONK TORCH & TWANG****FALLS CHURCH, VA****SUNDAY, JUNE 12 • 8:30 PM**

w/the Hall Brothers @ JV's, 6666 Arlington Blvd., 22042

COSY SHERIDAN**RESTON/HERNDON FOLK CLUB, VA****TUESDAY, JUNE 14 • 7:15 PM**

Cosy Sheridan is a much-awarded singer-songwriter who first came to the folk world's attention in 1992 when she won the New Folk songwriting contest at The Kerrville Folk Festival and the Troubadour Award at the Telluride Bluegrass Festival. She's noted for clever themes and clever turns of phrase. \$10/\$9 members. Tickets at the door or contact Dave at DAHurdSr@cs.com. Info: 703-435-2402 or restonherndonfolkclub.com.

BILL BAKER BAND • GAITHERSBURG, MD**WEDNESDAY, JUNE 15 • 6-8:30**

Hershey's Restaurant, 17030 Oakmont Ave., Gaithersburg, MD 20877

JANIE MENEELY & ROB VAN SANTE • ANNAPOLIS, MD**FRIDAY, JUNE 17 • 7:30 PM**

Chesapeake songster **Janie Meneely** and traditional balladeer **Rob van Sante** join forces for an evening of maritime music from the Bay and beyond. Annapolis Friends Mtg., 351 DuBois Rd, 21401. \$12, or \$10 for students, 65+, or members of ATDS, FSGW, or BFMS. Info: 333concerts.org or 443-333-9613.

HARLEY STRING BAND • CLIFTON, VA**SATURDAY, JUNE 18 • 5 PM**

Paradise Springs Winery, 13219 Yates Ford Rd.,

MUSIC MATTERS SHOWCASE • COLUMBIA, MD**SATURDAY, JUNE 18 • 6:30 PM**

Bob Brill + Massquaffers + Rick LaRocca + host Joseph Isaacs. Music Matters Showcase at Mad City Coffee House, 10801 Hickory Ridge Rd, 21044; donations; josephisaacs.com.

CARROLL COUNTY RAMBLERS • WESTMINSTER, MD**SATURDAY, JUNE 18 • 7:30 PM**At the Carroll Arts Center, 91 W. Main St., Westminster, MD 21157; \$12/10mem-stdts-srs; carrollcountyartscouncil.org**SELDOM SCENE • VIENNA, VA****THURSDAY, JUNE 23 • 7 PM**

Nottaway Park, 9610 Courthouse Rd, 22181.

TAYLOR PIE • SILVER SPRING, MD**SATURDAY, JUNE 25 • 5 PM**

Taylor Pie is truly a talented folk artist/tune-smith/performer/Producer. The World Folk Music Association presents her in a house concert near Georgia Ave. & Forest Glen; for reservation, directions, email toreserve@wfma.net. \$20 suggested, all to performer.

LIBRARY OF CONGRESS HOMEGROWN CONCERTS, • DC**BILLY MCCOMISKEY, FAMILY & FRIENDS****TUESDAY, JUNE 28 • 12 NOON**

Billy McComiskey, family and friends, including sons Patrick, Sean & Michael, and multi-instrumentalist Josh Dukes. in the Coolidge Auditorium, Library of Congress, Jefferson Building; free. loc.gov/concerts/folklife/mccomiskey.html

SMITHSONIAN FESTIVAL OF AMERICAN FOLKLIFE**ON THE NATIONAL MALL BETWEEN 4TH & 7TH STS.****JUNE 29-JULY 4 & JULY 7-10****11 AM - 5 PM; 6:30 CONCERTS**

Admission is free. Two programs this year: Basque Culture and the Sounds of California. Basques are rooted around the Pyrenees Mountains, with migrations to the sheep-grazed mountains of Idaho, fishing communities from Scotland to Newfoundland, towns across Mexico and Argentina. California's music reflects the state's diversity, as it is our most populous and most diverse state, with one in four immigrants to the U.S. living there. Come celebrate its history, cultural heritage old and new, with fascinating mixtures. FSGW will host public song circles on the topic of migration and immigration at the "On the Move" stage on July 8 & 10. Information: festival.si.edu.

Pinewoods Camp Inc. Seeks Experienced Executive Director

This is a full-time, year-round position managing camp operations, finances, improvements and preservation.

For more information:
<http://www.pinewoods.org/jobs/executive-director-position/>

Submit resume and a letter of interest that includes salary requirements to edsearch@pinewoods.org

Applications must be received by Friday, July 1.

Dances

COMMUNITY/FAMILY FSGW Family Dance. Details on page 8

HARRISONBURG FAMILY DANCE • HARRISONBURG, VA FIRST THURSDAYS • 6:30-8:30 PM

First Presbyterian Church, 17 Court Square 22802. Line, circle and square sets. Free and open to all. Info: tommack1861@gmail.com or [facebook.com/SVCWED](https://www.facebook.com/SVCWED).

FRONT ROYAL FAMILY DANCE • FRONT ROYAL, VA SECOND THURSDAYS • 6-7:30 PM

Samuels Public Library, 330 East Criser Rd 22630. Line, circle and square sets. Free and open to all. Info: tommack1861@gmail.com or [facebook.com/SVCWED](https://www.facebook.com/SVCWED).

CONTRA

Sundays FSGW Sunday Night Dances. Details on page 7.

Wednesdays



BFMS CONTRA DANCE • BALTIMORE, MD WEDNESDAYS • 8-10:30 PM

Beginners always welcome. New dancer workshops at 7:30 on the 2nd and 4th Wednesdays. Nationally-known musicians and callers appear regularly. BFMS and FSGW members \$9, non-members \$13. Lovely Lane Church, 2200 St. Paul St, 21218. Info: bfms.org.

June

- 1 **Jacqui Ann Grennan** calls to *Treble Makers: Emily Aubrey* (fiddle), **Robin Wilson** (flute, concertina, sax), and **Liz Donaldson** (guitar).
- 8 **Dugan Murphy** calls to *Organic Family Band*. New dancer orientation at 7:30 pm.
- 15 **Greg Frock** calls to *Lovely Lane String Band*.
- 22 **Caroline Barnes** calls to *New Hip Trio*. New dancer orientation at 7:30 pm.
- 29 **April Blum** calls to *Baltimore Open Band*

Fridays

FRIDAY NIGHT DANCERS • GLEN ECHO, MD FRIDAYS • 8:30-11:30 PM

The Friday Night Dancers, a non-profit, volunteer-based organization, in cooperation with the National Park Service, Montgomery County, and the Glen Echo Park Partnership for Arts and Culture, sponsors weekly contra dances to live music in the historic Glen Echo Spanish Ballroom (unless otherwise specified), at 7300 MacArthur Blvd, 20812. New dancer class every week from 7:30 to 8:15. \$10 for the lesson and dance.



\$5 for age 17 and under. (Age 17 and under free on second Fridays.) Info: FridayNightDance.org, or 301-632-2222, or the Friday Night Dance Facebook page.

June

- 3 **Nils Fredland** calls to *Elixir* with **Nils Fredland**, trombone, **Anna Patton**, clarinet, **Ethan Hazzard-Watkins**, fiddle, **Jesse Readlynn**, trumpet and flugelhorn, **Owen Morrison**, guitar and foot percussion.
- 10 **Dugan Murphy** calls to the fabulous *Glen Echo Open Band*.
- 17 **Valerie Helbert** calls to *Honeysuckle Rose* with **Liz Donaldson** on piano, **Andrea Hoag** on fiddle, **Paul Oorts** on banjo, guitar, and mandolin, and **Ralph Gordon** on bass.
- 24 **Perry Shafran** calls to *Boneshakers* with **Joe DeZarn** on fiddle, **Gina Faber** on mandolin, **Paul Hammerton** on guitar and **Ralph Gordon** on bass.

Saturdays



BFMS CONTRA AND SQUARE DANCE BALTIMORE, MD

SATURDAY, JUNE 11 • 8-11 PM

Sue Gola calls to *Callithump*, with **Glyn Collinson** (mandolin), **David Knight** (fiddle), and **Andrew Marcus** (accordion). Workshop for beginners starts at 7:30pm. Bring a snack & bring a friend. Beginners, singles, couples and families welcome. No experience or partner necessary. St. Mark's on the Hill, Parish Hall, 1620 Reisterstown Rd., 21208. \$9 Members, \$13 Non-members. Under 21 full-time students with ID \$4 members, \$6 Non-members. Info: Sara Glik 410-292-8681 or satdance@bfms.org.

LANCASTER CONTRA DANCE • LANCASTER, PA

SATURDAY, JUNE 18 • 7-10 PM

Sue Gola calls to *Raise the Roof* with **Mat Clark** (fiddle), **Kathy Talvitie** (guitar), **Judi Stellar** (hammered dulcimer). Lancaster County Central Park, Williamson Road, Pavilion 11, 17602. Beginners Workshop 6:15; \$9 adults/\$6 students. Age 15 and under free. Info: Karen at 717-951-4317 or lancastercontra.org.

ATDS CONTRA • ANNAPOLIS, MD

SATURDAY, JUNE 18 • 6:30-10 PM

Ann Fallon will teach and call dances to local favorites **Leah Weiss** (fiddle), **Gary Wright** (guitar) and **Neil Harpe** (banjo). The evening includes a free introductory session at 6:30; Dance 7-10 p.m. All ages welcome. All dances taught and walked through. No experience or partner required. Snacks to share at the break are welcome! Annapolis Friends Meeting House, 351 DuBois Rd, 21401. \$10/discounts for seniors, students, families, and ATDS/FSGW Members. Info: Jan Scopel at 443-540-0867 or janscope@hotmail.com or contradancers.com/atds.

FREDERICK CONTRA DANCE • FREDERICK, MD**SATURDAY, JUNE 25 • 8-11 PM**

Eva Murray will call to *Rambling House*! This fine ceili band features **Joe DeZarn** on fiddle; **Tina Eck** on flute and penny-whistle; **Patrick Cavanagh** on tenor banjo and button accordion; **Marc Glickman** at the piano. Snacks to share at the break are welcome. Introductory workshop at 7:15. Trinity School, 6040 New Design Rd., General: \$10, Students: \$5. Info: Boe Walker at **301-694-6794** or www.contradancers.com.

ENGLISH COUNTRY*Mondays***BALTIMORE FOLK MUSIC SOCIETY****PIKESVILLE, MD****MONDAYS • 8-10:30 PM**

English Country Dancing is lively movement to elegant music in a friendly, informal setting. All dances are taught and walked through 7:45. Admission \$8 Members (BFMS, ATDS, FSGW, CDSS); \$11 Non-members, \$2 student discount. St. Mark's on the Hill Parish Hall, 1620 Reisterstown Rd, 21208. Info: Carl Friedman at **410-321-8419** or engdance@bfms.org.

June

- 6 April Blum** calls to **Elke Baker** (violin), **Marty Taylor** (winds, concertina), and **Jonathan Jensen** (piano, etc.). **Free New Dancer Orientation** at 7:45
- 13 Tom Spilsbury** calls to **Tina Chancey** (violin), **Paul Oorts** (strings, accordion), and **Liz Donaldson** (piano)
- 20 Diane Schmit** calls to **Becky Ross** (violin), **Robin Wilson** (flute, concertina), and **Carl Friedman** (piano)
- 27 Sharon McKinley** calls to **Jeff Steinberg** (violin), **Dave Crandall** (flute, sax), and **Judy Meyers** (piano)

*Wednesdays***FSGW English Country Dance.****Details on page 9.***Saturdays***THE LEESBURG ASSEMBLY • GREAT FALLS, VA****SATURDAY, JUNE 18 • 7:30-10:30 PM**

Join us for our summer ball! Period dress or evening wear preferred. Tom Spilsbury will call to music by **Catherine Chapman**, **Judy Meyers**, and **Paul Oorts**. Please bring a refreshment to share. \$30. St. Francis Episcopal Church Hall, 9220 Georgetown Pike, 22066, 4.7 miles west of the Beltway. \$10. Info: David Pacelli at **703-757-8648** or theleesburgassembly.org.

INTERNATIONAL*Mondays***BETHESDA INTERNATIONAL FOLK • BETHESDA, MD****MONDAYS • 7:30-10 PM**

Come join our friendly group and learn dances from all over the world. Beginners 7:30-8, intermediate / advanced 8-10

Newsletter submissions: See instructions on page 2

(requests from 9:15-10). No partner needed. All levels of experience welcome. Adults over 16 please. Mostly recorded music; wonderful wood floor. Jane Lawton Community Ctr, 4301 Willow Ln., 20815. \$8. Info: Phyllis or Brandon, **301-871-8788**, DiamondDanceCircle.com or DiamondDanceCircle@comcast.net.

*Wednesdays***COLUMBIA FOLK DANCERS • COLUMBIA, MD****WEDNESDAYS • 8-10:30 PM**

We meet at Kahler Hall in Columbia, Village of Harpers Choice. Class at 8, dancing starts at 8:30. Requests taken throughout the evening. \$5 (\$3 for seniors). Info: Ethel at **410-997-1613**, Ed at **410-740-2309**, or columbiafolkdancers.org.

*Thursdays***GLEN ECHO INTERNATIONAL FOLK • BETHESDA, MD****THURSDAYS • 7:30-10:45 PM**

Church of the Redeemer, 6201 Dunrobbin Dr (near the intersection of Goldsboro and MacArthur). Lesson at 7:30, Request dances from 9 to 10:45. Mostly recorded music. No partner or experience necessary. Wear comfortable clothing and soft-soled shoes. Co-sponsored by FSGW. \$5 Info: Jamie at **301-466-3018** or dancingplanet@erols.com.

MT. VERNON INTERNATIONAL FOLK DANCING**ALEXANDRIA, VA****THURSDAYS • 8-10 PM**

We welcome beginners and advanced dancers, no partner necessary. Friendly and diverse group; fabulous wooden floor; a mix of easy dances, advanced instruction and requested dances. Mt Vernon Unitarian Church, 1909 Windmill Lane, 22307. Usual donation \$4. Info: Patricia at **703-472-3888** or pdw@patriciadaywilliams.com.

CIRCLE DANCE • ARLINGTON, VA**3RD AND 5TH THURSDAYS • 7:30-9:30**

Come and explore dances from all over the world in a spirit of mediation and joy. All dances taught. Recorded music. Unitarian Universalist Church of Arlington, Rte 50 at George Mason Dr, 4444 Arlington Blvd, 22204. Donation requested. Info: Ann Ulmschneider at **703-528-5114** or aulmsch@msn.com.

*Fridays***GREENBELT FOLK DANCING - GREENBELT, MD****FRIDAYS - 8:30-10:45 PM**

We focus on dance from Eastern Europe and Scandinavia. No partner or experience necessary. Beautiful dance floor. Teaching from 8:30 to 9:15, requests from 9:15 on. Greenbelt Community Center Dance Studio, 15 Crescent Rd., 20770. \$7/students and seniors half price. Check website for special events. Info: Larry Weiner at **301-565-0539** or larry@larryweiner.com, or larryweiner.com/FridayDance.htm.

DANCES continued

ISRAELI

**ISRAELI DANCING • ARLINGTON, VA
2ND AND 4TH TUESDAYS • 8-10 PM**

Beginner/review instruction from 8 to 9. Intermediate and practice from 9-10. All with a thirst for exercise and dance are welcome. Congregation Etz Hayim, 2920 Arlington Blvd, 22204. \$5 per person per hour. Info: **Ethan Halpern** at **301-982-0937** or **xtc0yes@aol.com**.

**ISRAELI DANCING • CHEVY CHASE, MD
TUESDAYS • 7-10:30 PM**

Instruction from 7 to 7:45. We focus on building a repertoire of both classic and newer Israeli dances in a friendly, welcoming atmosphere. Recorded music. Light refreshments served. Ohr Kodesh Congregation, 8300 Meadowbrook Ln, 20815. \$8 adults, \$6 students. Info: **Mike Fox** at **240-424-0805** or **markidmike.com**.

MORRIS

**ARLINGTON NORTHWEST MORRIS WOMEN
MONDAYS • 7:30-9 PM**

Learn and perform the traditional morris dances of Northwest England, which combine simple footwork with power and precision. We are a welcoming group of women who practice in a great place with a wooden floor (easier on your knees) at the Unitarian Universalist Church of Arlington, Arlington Blvd at George Mason Dr. Info: **suzelise@comcast.net** or **nwdancers@comcast.net**.

**ROCK CREEK MORRIS WOMEN
WEDNESDAYS • 7:30-9:45 PM**

Learn English morris dancing and become part of a community that dances, sings, and socializes together. Bethesda Elementary School, 7600 Arlington Rd, 20814, walkable from Bethesda Metro. Info: **Louise** at **301-927-6373** or **louise-neu@earthlink.net** or **uswet.com/RCMW.html**.

**FOGGY BOTTOM MORRIS MEN
THURSDAYS • 8-10 PM**

Experience the vigorous thrill of the morris and the camaraderie of a morris team! Learn and perform dances from English Cotswold villages, mummers' plays and occasional long-sword dances. We welcome new and slightly used dancers to our practices at Knock on Wood Tap Studio, 6925 Willow St, NW, Washington DC and/or at the pub afterwards. Info: **Alan Peel** at **301-920-1912** or **squire@fbmm.org** or **fbmm.org**.

SCANDINAVIAN

**NORWEGIAN POTLUCK & DANCE • KENSINGTON, MD
SATURDAY, JUNE 4 • 6:30 PM**

Norwegian-style house party. Mesmerizing live music by **Loretta Kelley** on the unique Hardanger fiddle

(w/sympathetic strings under the bowed strings--see HFAA.org). Addictive dances, some with elements like Swing or Hambo. Beginners, singles/couples, watchers/listeners all welcome. Bring clean shoes to wear, food to share, and bucks you can spare. 3812 Denfeld Ave., 20895. Host phone just in case: **Sonia 301-503-7906** Info/dirs: **http://MAND.fanitull.org** or **Jenny** at **pi@xecu.net**.

SCOTTISH

See **rscds-greaterdc.org** for all Scottish dance listings.

**BETHESDA SCOTTISH COUNTRY DANCE
MONDAYS • 8-10 PM**

NIH Building T-39 (Dance and Aerobic Center). Call or email in advance for directions. Info: **John MacLeod** at **301-622-5945** or **blackolav@gmail.com**.

**GREENBELT SCOTTISH COUNTRY DANCE
TUESDAYS • 8-10 PM**

Dance all year 'round at the Greenbelt Community Center. \$8. Info: **Jay Andrews** at **703-719-0596** or **andrewj@rcn.com**.

**ALEXANDRIA SCOTTISH COUNTRY DANCE
WEDNESDAYS • 8-9:45 PM**

Learn Scottish dance at the Durant Center, 1605 Cameron St, Alexandria 22314. \$5 Info: **elanyi@cox.net**.

SWING/BLUES

**BACK ROOM BLUES • GLEN ECHO, MD
THURSDAYS • 8:15-11:30 PM**

Popular weekly blues dance in the "Back Room" at the Spanish Ballroom, Glen Echo Park, 7300 MacArthur Blvd, 20812. Sprung wood floor. Beginner lesson from 8:15 to 9. Different D.S. and instructors play blues from 9 to 11:30. Info: **Donna Barker** at **301-634-2231** or **CapitalBlues.org**.

WALTZ/COUPLES DANCING

**AFTERNOON WALTZ • GLEN ECHO, MD
SUNDAYS • 3:30-6**

A lively mix of folk waltzes with other couples dances, including hambo, swing, tango, and polka. Beginner lesson from 2:45 to 3:30. No partner required. Glen Echo Spanish Ballroom, 7300 MacArthur Blvd, 20812. \$10. Info: **WaltzTimeDances.org** or **301-634-2222**.

June

- 12 Gigmesters** with **Alexander Mitchell** (fiddle), **Paul Oorts** (button accordion, mandolin, banjo, guitar), **David Wiesler** (piano), **Ralph Gordon** (bass)
- 26 Waltzing Stars** with **Marty Taylor** (winds, concertina), **Alexander Mitchell** (fiddle), **Liz Donaldson** (piano), **Ralph Gordon** (bass)

Dance Classes

SCANDINAVIAN DANCE CLASSES • BETHESDA, MD

TUESDAYS

(JUNE 7, 14 & 21 – BUT NOT 28)

7:30-9:30 PM

Beginning and advanced dancers welcome. Learn Hambo, Schottis, Waltz, *Zwiefacher*, and other Swedish and Norwegian couple turning dances, including requests. Sometimes live music. Wear smooth-soled shoes (leather soles are best) for turning, not running shoes. \$5. First time free. Info: Lisa Brooks at 240-731-1925, lisa@HamboDC.org or HamboDC.org.

GWCC IRISH SET DANCE CLASSES • SILVER SPRING, MD

THURSDAYS JUNE 8-AUGUST 18 • 7-9:30 PM

The Greater Washington Ceili Club holds weekly adult set & ceili dance classes in a friendly, relaxed—and air-conditioned—environment. No experience or partner needed. Wear comfortable clothes and leather or smooth-soled shoes. Advanced dances this summer include the Sliabh Fraoch Set and the High Cauleed Cap. In addition to weekly instruction, there is a monthly mini-ceili with live music, open to all on the 3rd Thursday each month. Argyle Park Activities Bldg, 1030 Forest Glen Rd, 20901. \$40/season, register and pay at class, first class free. Info: 301-649-6410, info@gwcc-online.org or gwcc-online.org.

Jams/Open Mics/Audience Participation

SAW (SONGWRITERS ASSOCIATION OF WASHINGTON)

OPEN MICS • SAW.ORG

Tuesdays: 8 pm Ireland's Four Courts, Arlington, VA

Wednesdays: 8 pm Azucar, Silver Spring, MD

3rd Thursday: Beans in the Belfry, Brunswick, MD

4th Thursday: New Deal Café, Greenbelt, MD

Fridays; American Legion Hall, Rockville, MD

2nd Friday: Young Voices Quench, Rockville, MD

Sundays

DC BLUEGRASS UNION DUPONT CIRCLE JAM

WASHINGTON DC

1ST SUNDAYS • 11 AM-2 PM

The Mansion, 2020 O St NW, 20036. Accessible on Metro Red Line. Info: Mike Marceau at mikemarceau@juno.com. Info on venue: omansion.com.

WASHINGTON METROPOLITAN ACCORDION SOCIETY

SUNDAY, JUNE 12 • 4 PM

Meeting including member concert" at Sleepy Hollow United Methodist Church, 3435 Sleepy Hollow Rd., Falls Church, VA; washingtonaccordions.org

ACOUSTIC JAM • ANNAPOLIS, MD

SUNDAYS • 10 AM-12:30 PM

Indoors at the Visitor Center, Quiet Waters Park. Info: ken.i.mayer@gmail.com.

CLASSIC COUNTRY & GOSPEL JAM

SILVER SPRING, MD

2ND SUNDAY • 2-5 PM

The Sunday jam welcomes a wide range of musical abilities and acoustic instruments including (but not limited to) guitar, fiddle banjo, mandolin, bass, Dobro, harmonica, cello & autoharp—as well as the human voice. 9819 Capitol View Ave., 20910. Playlist & directions: www.SundayJam.org; Questions: Dorie Hightower 301-706-763

CABOMA JAM • ARLINGTON, VA

2ND AND 4TH SUNDAYS • 2 PM

Capitol Area Bluegrass and Old-Time Music Association holds jams at Lyon Park Community Center, 414 N. Fillmore St (at Pershing Dr.), 22201. Info: Don at 703-522-1696 or www.caboma.org.

SACRED HARP SINGING • SANDY SPRING, MD

3RD SUNDAYS • 4-6 PM

Singing is followed by a potluck supper. Location is a small schoolhouse behind the Community Building, 17801 Meetinghouse Rd, 20860 (about 10 miles west of Laurel). Info: Dave Greene at 301-570-3283 or dgreene@all-systems.com to confirm.

VIENNA/OAKTON SHAPE NOTE SING • OAKTON, VA

3RD SUNDAYS • 5-7:30 PM

Books: *The Shenandoah Harmony* and *The Sacred Harp, 1991* Denson edition; bring a snack to share. Unitarian Universalist Congregation of Fairfax, 2709 Hunter Mill Rd, 22124, in classroom 1. Info: John at 540-955-2660 or jdelle@visu-allink.com or visit dcshapenote.squarespace.com.

SCOTTISH JAM • ALEXANDRIA, VA

4TH SUNDAYS • 2-5 PM

John Strongbow's Tavern, 710 King St., 22314. Info: Peter@boghadubh@gmail.com or dscottishsession.blogspot.com. Info on venue: johnstrongbows.com.

Mondays

BALKAN SINGING • TAKOMA PARK, MD

MONDAYS • 8 PM

Informal singing group, Sedenka, meets to sing Balkan village songs. Interested novices welcome. Info: Katya at 301-270-4175 or Katya@partan.com.

JAMS/OPEN MICS/AUDIENCE PARTICIPATION *continued***DC BLUEGRASS UNION VFW JAM • TAKOMA PARK, MD**
1ST AND 3RD MONDAYS • 7-10 PM

Free. Non-smoking. At Veterans of Foreign Wars Post 350, 6420 Orchard Ave (corner of 4th Ave), 20912, near New Hampshire and Eastern Aves. Info: Barb Diederich at 301-633-2504 or barb@barbdiederich.com.

SEA CHANTEY OPEN PUB SING • WHEATON, MD
1ST MONDAYS • 8-10 PM

The Ship's Company chanteymen host open mic chantey sings. No cover or minimum; arrive early for a table. Participation encouraged but not mandatory. Requests honored if possible. Mostly a cappella but instruments are welcome. Limerick Pub, 11301 Elkin St, 20902. Info: Myron Peterson at ructic@yahoo.com or ShipsCompany.org.

*Tuesdays***CAPITAL ACCORD CHORUS • SILVER SPRING, MD**
TUESDAYS: 7:30-10 PM

JUNE IS BUSTING OUT ALL OVER...with the Capital Accord Chorus, an all-women's *a cappella* group singing in the barbershop style. Free and open rehearsals. We meet at Northwood High School in the Chorus Room, 919 University Blvd. West, 20901. Info: **1-301-392-SONG (7664)** or admin@capitalaccord.org or www.capitalaccord.org.

WASHINGTON REVELS-CARPE DIEAM SUMMER
SOLSTICE COMMUNITY SING • SILVER SPRING, MD
TUESDAY, JUNE 21 • 6-9 PM

Celebrate the summer solstice with singing, a parade, and a potluck. On the 21st of every month we gather to share songs, community and refreshments – and sometimes even a dance or two! We sing adult, kid and family songs. All are welcome to bring a song to share. You can sign up in advance to lead a song by contacting Jo Rasi at jrasi@revelsdc.org. Or just show up to sing (or even just to listen)! Note: Located at Bennington Road Park (down the hill from Revels) or if rains, at Washington Revels Studio Space, 531 Dale Drive, 20910. www.revelsdc.org.

**RESTON/HERNDON FOLK CLUB, VA**
TUESDAYS • 7:15 PM

At Amphora Diner Deluxe, 1151 Elden St, 20170. Open mic format. Doors open at 6. Second Tuesday includes 25-minute member showcase. Third Tuesday often features monthly concerts, price varies. Info: **703-435-2402** or RestonHerndonFolkClub.com.

DC SHAPE NOTE SING • WASHINGTON, DC
3RD TUESDAYS • 7-9:30 PM

We sing from both The Sacred Harp and Shenandoah Harmony. Loaners available and books for sale. Everyone is welcome to bring snacks and friends. Capitol Hill Presbyterian Church, 201 4th St SE, 20003. Enter side door, left of the main steps. Street parking possible; church is 10 minutes from Capitol

South and Eastern Market Metro stations, or 20 minutes from Union Station. Info: John at 540-955-2660 or dcshapenote.squarespace.com.

OLD-TIME JAM • BALTIMORE, MD
ALTERNATE TUESDAYS • 7:30-10:30 PM

Ken and Brad Kolodner lead the Baltimore Old-Time Jam at Liam Flynn's, 22 W. North Ave, 21201. Info: KenAndBrad.com.

*Wednesdays***TRAD SESSION • WHEATON, MD**
WEDNESDAYS • 7:30 PM

Trad session led by **Zan McLeod** or **Philippe Varlet** at the Limerick Pub, 11301 Elkin St., 20902

SEA CHANTEY OPEN PUB SING • 3 LOCATIONS
2ND, 3RD, AND 4TH WEDNESDAYS • 8-10 PM •

The Ship's Company chanteymen host open mic chantey sings. Participation encouraged but not mandatory. Requests honored if possible. Info: Myron Peterson at ructic@yahoo.com or ShipsCompany.org.

June

- 8 Wharf Rat**, 801 S Anne St. (Fell's Pt.), Baltimore, 21231
- 15 Galway Bay**, 63 Maryland Ave., Annapolis, 21401
- 22 Laughing Man Tavern**, 1306 G St NW, Washington, DC 20005

CAJUN JAM • GREENBELT, MD
4TH WEDNESDAYS • 7-9 PM

Monthly open Cajun jam and dance. New Deal Café, 113 Centerway, 20770. Info: **301-474-5642** or newdealcafe.com. Check website to confirm.

*Thursdays***FOLKSONG SING-IN • WHEATON, MD**
3RD THURSDAYS • 8-10 PM

Join local musician **Brad Howard** every month for this musical gathering. Everyone gets a chance to lead the room in song. Bring your favorite folk tunes, your voice, and even your instruments for a great evening of song and pub-style fellowship. The Limerick Pub, at the corner of Elkin and Price, 11301 Elkin St, 20902. Venue Info: thelimerickpub.net.

*Fridays***GLEN ECHO OPEN BAND • GLEN ECHO, MD**
2ND FRIDAYS • 8:30-11:30 PM

The fabulous Glen Echo Open Band plays for the second-Friday contra dance. All instruments and levels of ability are welcome. Find recordings, tune book names and page numbers of tunes played by the Open Band at OpenBandOnline.com. The site works best using iTunes on a PC or a Mac. Info: FridayNightDance.org.

*Saturdays***ARCHIE EDWARDS BLUES JAM • RIVERDALE, MD**
SATURDAYS • 1-5 PM

Acoustic instruments, all skill levels and listeners welcome. 4701 Queensbury Rd, 20737, across from the Riverdale MARC train station. Ample parking. Free, but donations welcome. Info/confirmation: **301-396-3054** or **acousticblues.com**.

WASHINGTON'S SPELMANSLAG SILVER SPRING
KENSINGTON MD**2ND AND 4TH SATURDAYS 2:30-4:30 PM**

Open rehearsals for a small orchestra playing traditional Swedish music. Info at **juliaborland3250@gmail.com**.

JAMS/OPEN MICS/AUDIENCE PARTICIPATION continued

SHAPE NOTE SINGING • BERRYVILLE, VA
1ST SATURDAYS • 4-8 PM

Shape note singers will gather at Josephine School Museum, 303 Josephine St. Potluck supper (picnic style, no kitchen facilities). Info: **shenandoahharmony.com**, **dcshapenote.squarespace.com**, or call John or Kelly at **540-955-2660**.

Storytelling**STOOP STORYTELLING • COLUMBIA, MD**
FRIDAY, JUNE 10 • 7 PM

Stoop Storytelling: Travel Stories: Stories from Abroad @ Owen Brown Interfaith Center, 7246 Cradlerock Way, 21045; 518; **columbiafestival.org**

Workshops, Weekends, Festivals & Special Events**GARRETT COUNTY CELTIC FESTIVAL • FRIENDSHIP, MD**
FRIDAY, JUNE 3 • 6-9 PM & SATURDAY, JUNE 4
9:30 AM – 5PM

IONA perform both days; athletic games, pipers, Irish & Scottish dancers, clans, food, sheep, vendors, kidstuff; \$15; **gccelticfestival.com**.

TINNER HILL BLUES FESTIVAL • FALLS CHURCH, VA
FRIDAY, JUNE 10 – SUNDAY, JUNE 12

See ad on page 9.

31ST ANNUAL BFMS SPRING CATOCTIN MOUNTAIN
MUSIC AND DANCE WEEKEND • THURMONT, MD
FRIDAY, JUNE 17 - SUNDAY, JUNE 19

Join dancers and musicians of all ages for a participatory intergenerational weekend of dancing, singing, workshops, jamming, crafts, hiking and more in a beautiful mountain setting from \$89 per person. Info: Elisabeth Epstein, **703-272-8197** or **catocotin@bfms.org**. Online registration and more at **bfms.org/catocotin.php**.

45TH ANNUAL DEER CREEK FIDDLERS' CONVENTION
WESTMINSTER, MD
SATURDAY, JUNE 11

Carroll County Farm Museum, 500 S. Center St., 21157; **commongroundonthehill.org**

PLAY AMAZING OVERTONE FLUTE FUJARA
WESTMINSTER, MD**MONDAY, JULY 4 - FRIDAY, JULY 8, 2016**

A week filled with music, other instrument classes available, evening concerts and jams, at beautiful McDaniel College.

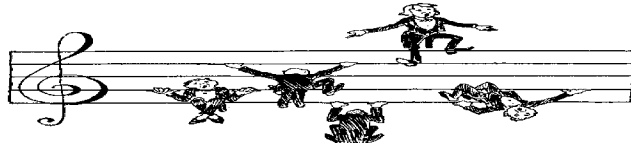
For more information and to register see the webpage at **http://www.commongroundonthehill.org/**, call Rob Casell at **410-857-2771**, or email **rob@commongroundonthehill**. On the website click Traditions Week 2 / Overtone flutes-fujara, for class descriptions. All levels, no music experience necessary, loaner instruments in class. To hear an example of fujara, go to **https://www.youtube.com/watch?v=5Y5fonktBzQb**.

SUMMERTUNES 2016 • FREDERICK, MD
SATURDAY JULY 23 • 10 AM-11 PM

All-day music workshop and rehearsal includes playing for the MMFAC contra dance. The experience is friendly, exhilarating, educational, and just plain fun. Music available in advance; all instruments welcome. With **Andrea Hoag** (fiddle), and **Liz Donaldson** (piano/accordion). Trinity Episcopal School, 6040 New Design Rd, 21703. \$55/before June 25; \$60/after; scholarships available. Info and registration: Andrea Hoag, **andrea@andreaHoag.com** or **301-565-2777**. **www.contradancers.com/mmfac**.

VOCAL WEEK AT AUGUSTA • ELKINS, WV
SUNDAY, AUGUST 7 – FRIDAY, AUGUST 12

Come harmonize at the Augusta Heritage Center's Vocal Week! Join **Flawn Williams**, a dozen great instructors, and a hundred happy singers in the cool West Virginia hills. Join in on songs from many traditions, from Appalachian ballads to sea songs, African American gospel, lullabies from many lands, improv games, and duets from all over. Call **304-637-1209**, **https://augustaheritagecenter.org/augusta-schedule/vocal/** or email **vocalweek@flawn.org**.



36th FSGW Washington Folk Festival Schedule Saturday June 4, 2016

Yurt Village Stage	Storytelling Stage	Cuddle-Up Stage	Potomac Palisades Stage	Chautauqua Stage	Spanish Ballroom	Crystal Pool Stage	Meet the Artist Area	Time
Bruce Hutton		Bill Baker Band	Harley String Band	Washington Dunhuang Guzhang Academy	<small>Rockville High School/Pipe Band</small> Orchester Prazevica	Irish Breakfast Band		12:00
Janice Curtis Greene								
Eleanor Ellis		Christylez Bacon	Rozsafa Hungarian Ensemble with Zsuzanna Seres	Barnes & Hampton		Washington Revels Jubilee Voices	Pete Kraemer & Bob Clayton	1:00
Noa Baum	Anne Sheldon				Tango Dance with Tango Mercurio			
The Reitz Stuff	Chelise Fox	Trio Sefardi		Abigail Palmer & Eric Selby				2:00
			Flamenco Aparicio		Romanian Dance w/ Jamie Platt	Snakehead Run	Bruce Hutton	
Elke Baker	Gary Lloyd	Flur		Paraguayan Harp				3:00
	Candace Wolf				Family Dance	Marimba Linda Xelaju	Andrew Acosta	
Cissa Paz	Moira Dougherty	Little Bit A Blues	Soul in Motion	Carey Creed				
	MyLinda Butterworth							4:00
Squeezers	Ellouise Schoettler	The Sweater Set	Rick Franklin and Delta Blues Boys	ROYA Trio	Fairfax Chinese Dance Troupe with Alice Gu-Zheng Ensemble	Reverb	Bill Mayhew	
	Margaret Chatham							
Martin Family Band	Shirleta Settles	Blanco y Negro	Mark H Rooney Taiko School	Orfeia	Swedish Dance with Flur	Blue Panamuse		5:00
	Allison Shapira							
Saturday Songwriter Showcase		Siobhán Quinn and Michael Bowers	DC Mudd	Bob Rychlik	Cajun Dance with Cypress Trio	Fiddle Showcase		6:00
								7:00

Schedule as of May 18, 2016 8:02 am

Schedule subject to change

36th FSGW Washington Folk Festival Schedule Sunday June 5, 2016

Yurt Village Stage	Storytelling Stage	Cuddle-Up Stage	Potomac Palisades Stage	Chautauqua Stage	Spanish Ballroom	Crystal Pool Stage	Meet the Artist Area	Time
Carly Harvey & Sol Roots		Humayun Khan	OCEAN Orchestra	Slaveya	East Rising Lion Dance Troupe	Culkin School of Irish Dance		12:00
Geraldine Buckley		Cathy Fink & Marcy Marxer	Ramon Tasat	Washington Toho Koto Society	Klezmer Dance with Klezcentricity			1:00
Maelstrom	Elsa Sellmeyer		Shango		Blues Dance with Capital Blues and Palidofsky Trio	Only Lonesome	Lisa Null	2:00
Mark Jaster	Lauren Martino	Ian Walters		Flory Jagoda & Friends	Halau Ho'omau I ka Wai Ola O Hawaii'i	Banjo showcase	Terry Leonino	3:00
	Laura J. Bobrow		Dead Men's Hollow					4:00
Ballad've	Twinbrook Tellers	Fabrangen Fiddlers	DC Choro Circle	Soumya Chakraverty	Armenian Dance	Jesse Palidofsky Group	Mark Jaster	5:00
Conjure Woman	Marc Young			Kinobe & Jaja	Swing Dance with Gina DeSimone and the Moaners			6:00
Tim Livengood	Michael Fleming	Maggie	Dede & the Do-Rights			Seth Kibel Klezmer Ensemble	Halau Ho'omau I ka Wai Ola O Hawaii'i	7:00
	Miriam Nadel			Flaming Shillelaghs	Contra Dance			
Sunday Songwriter Showcase	Merrilee Pallansch	Andrew Acosta Band	Capital Accord			Archie's Blues Barbershop		
	Robert Rovinsky			Appalachian Dulcimer showcase				
Silver Strings	Ballad Swap	New Sunshine Skiffle Band	The Rock-A-Sonics			Kale-y Band of Bedlam (Silgo Creek Hedge School Alumni)		

Schedule as of May 18, 2016 8:02 am

Schedule subject to change



P.O. Box 323
Cabin John, MD 20818

PRESORTED
FIRST CLASS MAIL
US POSTAGE PAID
ROCKVILLE, MD
PERMIT #4297

www.fsgw.org

Printed on recycled paper.

Address Service Requested

 **FIRST CLASS**

The Folklore Society of Greater Washington is a not-for-profit [Section 501(c)(3) of the IRS code] institution, and we encourage the financial contributions of our members. Contributions in excess of annual dues are welcome and may be tax-deductible. Please mail your gift to FSGW, P.O. Box 323, Cabin John, MD 20818. Subscriptions to the Newsletter are available only outside the Greater Washington Metro area.

FSGW IS DEDICATED TO PRESERVING AND PROMOTING TRADITIONAL FOLK ARTS IN THE WASHINGTON, D.C., METROPOLITAN AREA. MEMBERSHIP IS OPEN TO ALL WHO SUPPORT THESE GOALS UPON PAYMENT OF DUES.

FSGW Membership Form

New Membership Renewal Change of Address

Type	Individual Electronic Newsletter	Individual Paper Newsletter	Family Electronic Newsletter	Family Paper Newsletter
1 Year	<input type="checkbox"/> \$33	<input type="checkbox"/> \$33+ \$6	<input type="checkbox"/> \$45	<input type="checkbox"/> \$45 + \$6
2 Years	<input type="checkbox"/> \$62	<input type="checkbox"/> \$62+ \$12	<input type="checkbox"/> \$85	<input type="checkbox"/> \$85 + \$12
3 Years	<input type="checkbox"/> \$91	<input type="checkbox"/> \$91+ \$18	<input type="checkbox"/> \$125	<input type="checkbox"/> \$125 + \$18
Lifetime	\$550 (no charge for paper)		\$800 (no charge for paper)	
Student	<input type="checkbox"/> \$25	Student membership is electronic newsletter only.		
Paper	<input type="checkbox"/> \$25	Paper newsletter memberships are only for those outside of the Greater Washington area. The subscription includes no member privileges.		

Name1 _____
(Principal contact for membership, ballots, etc.)

Additional Names _____
(Family memberships only)

Address _____

City _____ State _____ Zip _____

Name 1: H: _____ - _____ - _____ W: _____ - _____ - _____

Cell: _____ - _____ - _____ Other: _____ - _____ - _____

E-mail: _____ @ _____

May we list you in our Membership Directory? FSGW does not provide mailing lists to any other organizations.

Yes No

Yes, but do not list my: _____



Send form and check made payable to FSGW to:
FSGW Membership • FSGW, c/o M. Burnett, 10001 Boreland Ct., Bristow, VA 20136