



Remembering Jean Ritchie

with Dan Schatz, Jon Pickow, Susie Glaze, and Kenny Kosek Saturday, April 28 • 8–10 pm



photo credit: nodepression.com



"Dear Jean...over the years, you have inspired and influenced generations of musicians, both through your careful preservation of the songs you grew up with and the poetry of your own pen...with unfailing kindness and generosity you have mentored, encouraged and laughed with us, sharing your dedication to the music and culture of the Kentucky mountains." Thus read the liner notes to the Dear Jean compilation CD produced by Washington area native Dan Schatz, now a Pennsylvania-based recording artist and Unitarian-Universalist minister, along with Takoma Park's Charlie Pilzer and labor organizer/singer Mick Lane. In 2015, Schatz returned to Washington to cohost a tribute to Jean Ritchie at the Washington Folk Festival. Two days later, the National Heritage Fellow, Fulbright Scholar, singer, and dulcimer player passed away at the age of 92. Her son Jon Pickow and singers Susie Glaze and Kenny Kosek, all



of whom performed on the Dear Jean recording, join Dan for a long-overdue memorial concert. At Seekers Church. \$20; members, \$10.



Join us for the 36th Annual Chesapeake Dance Weekend!

Your favorite three-part dance weekend returns to Camp Letts April 27-29. Celebrate our 36th year with contras, squares, and honky-tonk dancing, featuring talented staff from across North America.

Chesapeake Dance Weekend continued on page 13.

INSIDE: FSGW Board Members/Meetings, and Editorial Policy... 2 Call for Volunteers for Washington Folk Festival... 13 Letter from FSGW President... 24 Newsletter Submissions Policy... 2 Concerts: Fri., April 6: Andrew Allie, Josh Small, & Justin Golden... 3 Sat. April 7: Janie Meneely & Rob van Sante... 4 Sat., April 14: Thomas McCarthy (tentative)... 4 Sun., April 15: Lithuanian Centennial Celebration... 5 Sun., April 22: Ari & Mia Friedman... 4 Dances: Carpe Diem! Contra Dance... 15 Chesapeake Dance Weekend... 13 Contra Sonic... 15 English Country Dances... 14 Family Dance, Sun., April 8... 15 Glen Echo International Folk Dancers... 15 Great American Square Dance... 16 Sunday Night Dances... 12 Sings & Storytelling: Circle of Life Song Circle... 22 Doo-Wop Sing... 22 Gospel Sing... 22 Open Sing... 22 Sat. & Sun. April 7 & 8: Potomac River Shape Note Convention... 3 Schweinhaut Song Circle... 22 Shape Note Singing... 22 Storytelling... 24 Upcoming Events (FSGW)... 25 Listings by Type: Classes... 11 Concerts... 6 Dances... 16 Jams... 19 Open Mics... 20 Participatory Performing Groups... 21 Sings... 22 Storytelling... 24 Upcoming Events... 25 Venues... 27

Go to GREAT Concerts for FREE!

Go to great concerts for free! Most FSGW concerts rely on volunteers: See the "Details" page of a concert on the calendar at **fsgw.org** to sign up to volunteer at that event. You get in for free and you get a pass for free admission to a future FSGW event of your choice (except those listed as "no passes" or "suggested donation")—or to bring a friend!

How to SUBMIT A LISTING TO THE FSGW NEWSLETTER

1. Please look at this Newsletter and determine under what category your listing should appear. When submitting copy by email, put that category in the subject line, followed by the month. E.g., Classes [Month], Concert [Month], Dance [Month], and so forth. Putting the category in the subject line makes it easier for the editor to retrieve groups of events.

2. Please submit all listings in FSGW format. All information should be submitted in the following sequence:

- Event Title • City, State Abbreviation
- Day of the week, Date • start time - end time
- One or two sentences only. Location (+ zip code for GPS). Ticket prices.
- Info: Contact Name at Phone number or email/website.

NB: The city and state appear in the header; do not repeat them in the body, but in this age of Droids and GPS units, you need to include the 5-digit zip code—it goes right after the street address. **Submit entries to newsletter@fsgw.org**

FSGW Newsletter Editorial and Advertising Policy

The Folklore Society of Greater Washington endeavors to print copy it deems relevant to its membership and purpose as stated in its by-laws:

"The main purpose of the Society is to further the understanding, investigation, appreciation, and performance of the traditional folk music and folklore of the American people."

- All copy must be submitted by e-mail to **newsletter@fsgw.org** in text format in the body of the e-mail by the 8th of the preceding month.
- All listings must be submitted in the format set out in the "How to Submit" Box above. The format is also on our website (**fsgw.org**). Just click on Newsletter and look for a paragraph in green.
- The Editor reserves the right to edit or omit copy as necessary. Ad content must be approved by the Editor.

Basic Ad charges: 1/4 page ads (3.4" x 4.5" or 7.25" x 2.5"): \$65 for one month, \$120 for two. Commercial business: \$8 for 10 words. Noncommercial and individual: \$4 for 10 words. 25% discount for any single ad placed in 11 consecutive issues (one year) and paid in advance. We will work with you on larger ads. Copy, with check made payable to FSGW, must be received by the newsletter deadline. Mail to **FSGW, P.O. Box 323, Cabin John, MD 20818.**

Heather Livingston, Editor • **newsletter@fsgw.org**
Design & Layout: **Jennifer Woods GRAPHICS • Silver Spring, MD**

FSGW Board 2017–2018

April Blum, President
Molly Graham Hickman, Vice President
Jerry Stein, Treasurer
Kim Gandy, Secretary
Steve Roth, Dance
Mike Livingston, Programs
Jen Furlong, Membership
Heather Livingston, Publications
Ingrid Gorman, Publicity
Members-at-Large
Steve Kaufman
Tim Livengood
Kenneth Mayer

president@fsgw.org
vicepresident@fsgw.org
treasurer@fsgw.org
secretary@fsgw.org
dance@fsgw.org
program@fsgw.org
membership@fsgw.org
newsletter@fsgw.org
publicity@fsgw.org

301-422-0292

Mini-Fest Coordinating Committee

April Blum, Mini-Fest Chair (Logistics/Dance) **minifest@fsgw.org**
Charlie Baum, Mini-Fest Co-Chair (Programs) **cbaum@fsgw.org**

301-422-0292
 301-587-2286

Washington Folk Festival Coordinating Committee

Dwain Winters

DwainFest@aol.com

301-657-2789

FSGW BOARD MEETINGS

TUESDAY, APRIL 3 • 8 PM

The monthly FSGW Board meeting will be held in Classroom 201 Arcade Bldg. at Glen Echo Park, MD. All FSGW members may attend. If you wish the Board to consider a particular matter, please contact the appropriate Board member, or **April Blum** by e-mail, **president@fsgw.org**, or call afternoons or evenings **301-422-0292** in advance of the meeting.

FSGW Concerts

See Frequent Venues (page 27) for many location addresses. Visit fsgw.org for audio samples of performers

Remember: All FSGW concerts are "pay at the door" (no advance sales) unless otherwise noted.

This helps keep our costs and admission fees low for you.

To attend a house concert (in a private home), you must contact the host listed and RSVP in order to be given the exact address.

Cosponsored

Riverdale, MD

Richmond Blues Boys:

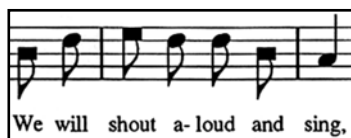
Justin Golden, Andrew Alli,

and Josh Small

Friday, April 6 • 8–10 pm



FSGW and the Archie Edwards Blues Heritage Foundation jointly present this trio of phenomenal young acoustic blues artists out of Richmond; all were faculty at Augusta Heritage Center's Blues Week in 2017, curated by Phil Wiggins and Joan Fenton. **Justin Golden's** Mississippi Delta, Chicago, and Virginia Piedmont roots are apparent in his soulful guitar and smooth voice, as is his inventiveness, as he brings his creativity to traditional blues forms. Richmond native **Andrew Alli's** harmonica style is influenced by Little Walter, Big Walter Horton, Sonny Boy Williamson II, and Junior Wells; featured at The Richmond Folk Festival for several years, he is also a great songwriter with a powerful voice. **Josh Small** is also a creative songwriter, and his slide guitar, banjo, and body percussion, as well as his infectious spirit, can't help but lift one's own spirits. At Archie's Barbershop. \$20; members, \$10. Info: program@fsgw.org or events@acousticblues.com.

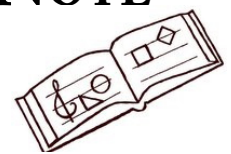


POTOMAC RIVER SHAPE NOTE SINGING CONVENTION

GREAT FALLS, VA

SATURDAY & SUNDAY, APRIL 7 & 8 • 10 AM TO 3:30 PM

Join singers from across the country for two days of spirited, vibrant, unaccompanied singing at the 29th Annual Potomac River Shape Note Singing Convention. All are welcome, and no experience is necessary. At the Great Falls Grange, 9818 Georgetown Pike, 22066. The convention is free and open to the public. Free-will offering will be accepted to cover expenses. Info: Facebook, "DC Shape Note Singers"; **Matt Roberts**, Chair: saotomesan@gmail.com; or dcshapenote.squarespace.com. For more information about *The Sacred Harp*, *The Shenandoah Harmony*, or shape note singing, visit fasola.org or shenandoahharmony.com.



FSGW Concerts continued

FSGW Special Event

Takoma, DC



Janie Meneely & Rob Van Sante

Saturday, April 7

8–10 pm

If you missed them in snowy, icy February, **Janie Meneely & Rob Van Sante** offer a do-over: an encore concert featuring material from their new CD, *Partners*. **Janie** is known around the world for witty original maritime songs in the forebitter tradition with a feminist twist—and for songs that paint a vivid picture of the

Chesapeake Bay, where she sails for real. Dutch-born guitarist and singer **Van Sante** lends his knack for melodies and flair for harmony to **Meneely's** compositions. Plus they've got a few collaborations up their sleeve. At Seekers Church. \$20; members, \$10. Info: program@fsgw.org.

FSGW Concert

Takoma, DC

(Tentative)

Thomas McCarthy

Saturday, April 14 • 8–10 pm

If U.S. authorities grant him an artist visa in time—not at all certain as this newsletter goes to press—**Thomas McCarthy**, singer and storyteller in the Irish Travellers community and tradition, will be back by popular demand for a feature concert at Seekers Church on his way home from the Brooklyn Folk Festival in early April. Watch fsgw.org and our Facebook page for updates!



FSGW House Concert

Takoma Park, MD

Ari & Mia Friedman

Sunday, April 22 • 12–2pm

(brunch at 11 am)

"New England's Americana Sister Act" **Ari & Mia Friedman** describe themselves as a "chamber folk" duo. They visit from Boston with their acclaimed vocal harmonies and fiddle, cello, and banjo. *No Depression* magazine writes: "Ari & Mia reference the styles of Southern and Northeastern fiddle music and the early American songbook to create a realm where their own compositions cross paths with older traditions. Their stylish and sophisticated music honors the sounds of Appalachian cottages, rural dance floors, and urban concert halls . . . the sisters sing in unison like two violins." Touring since 2008, the New England Conservatory graduates have opened for Cheryl Wheeler, performed with Sarah Jarosz, and won the 2010 John Lennon Songwriting Contest in the folk category. If you like their music at the April 20 Friday Night Dance at Glen Echo Park, come to Janie Meneely's for an encore over Sunday brunch. \$15 donation suggested. RSVP/directions: program@fsgw.org.



Cosponsored

Lithuanian Centennial Celebration

with Abraham Brody and Trys Keturiose

Sunday, April 15 · 5-7 pm



photo credit: National Sawdust

The Republic of Lithuania declared independence from the Russian Empire on February 16, 1918, and its diplomatic mission to the United States is celebrating the centennial all year with a series of special events. Presented by the Embassy of the Republic of Lithuania in the United States in partnership with FSGW, this free concert brings to Washington performing artists tapping deep roots of Lithuanian folk music. Bringing together music, performance art, and multimedia, **Abraham Brody** pushes the boundaries between performer and public and challenges the traditional notions of a performer in the 21st century by uniting these three art forms into one cohesive whole. Drawing inspiration from the roots, rituals, and folklore of diverse backgrounds, he weaves them into performances combining his own compositions, improvisation, and multimedia works. Since 1981, **Trys Keturiose**, led by ethnomusicologist and head of the Department of Ethnic Music at the Lithuanian Academy of Music and Theatre **Daiva Vyčiniėnė**, has performed sutartinės, traditional Lithuanian polyphonic songs distinguished by the use of seconds, entwined voices, accentuated rhythmic patterns and the simultaneous sound of two different texts (verse and refrain). The word sutartinė is derived from the verb sutarti, "to agree, to reach accord." The sutartinė tradition is dying out in rural Lithuania, but folk ensembles keep it alive in the cities. At Heritage Hall in Father O'Connell Hall, 620 Michigan Ave NE, 20064, on the campus of the Catholic University of America (Metro: Brookland or bus H2/H4). Free. Info: program@fsgw.org.

photo credit: zmones.lytas.lt/muzika



38th Annual FSGW Washington Folk Festival (June 2 and 3)—Call for Volunteers

Do you LOVE the Washington Folk Festival? Dream of being a Roadie to an awesome band? Wish you could get right up close to the performers with your camera and have permission to do it?

VOLUNTEER!

The Washington Folk Festival is a celebration of the many cultural traditions that are a part of our Greater Washington community—and we need you! Ages 14 and up, for fun tasks including set up and take down, performer and volunteer hospitality and sign-in, stagehands, sound operators, craft area assistants, member service area, information booth greeters, and event photographers and archival videographers. This year's Festival will again provide a rich smorgasbord of international culture along with American blues, bluegrass, old-time string bands, contemporary singer-songwriters, gospel, storytellers, craft demonstrations, and more. Volunteer now at washingtonfolkfestival.org. Want to get more deeply involved? We are also seeking people to help with the planning and management of the event, including festival coordination, publicity, web design, performer/staff hospitality coordination, and craft sales management. We'll train you! Info: **Jen Furlong**, membership@fsgw.org. Volunteer with a friend for a full day, and we'll give you both this year's FSGW membership free! If you're already a member, we'll renew your membership in person as a massive thank you for volunteering. We also have volunteer jobs before the festival: earn community service volunteer hours for school!

Concerts

See Frequent Venues for many location addresses on page 27.

Sundays

JV's RESTAURANT • FALLS CHURCH, VA SUNDAYS • 1 PM

Brunch featuring bluegrass or tradjazz. Mostly area musicians, with occasional touring artists. Info: jvsrestaurant.com.



JOY IKE, WITH HEATHER AUBREY LLOYD

BETHESDA, MD
SUNDAY, APRIL 1 • 7 PM

Philadelphia-based independent artist **Joy Ike** + iLyAIMY's **Heather Aubrey Lloyd**. At Positano Ristorante Italiano. \$18 adv/FocusMusic members; \$20 door. Info: **Jay Keating, 301-221-9000**, or FocusMusic.org.

WILBUR JOHNSON & THE GOSPEL PERSUADERS WASHINGTON, DC

SUNDAY, APRIL 1 • 10:30 AM + 1 PM + 3:30 PM

Easter Gospel Brunch. At The Hamilton. \$45.

ANNETTE WASILIK • GREENBELT, MD SUNDAY, APRIL 8 • 7 PM

Noted local songwriter joined by **John Previti** (bass), **Andrea Hoag** (violin), and **Kevin Dudley** (guitar). At New Deal Café. No cover, donations encouraged.

CAPITAL ACCORD CHORUS SPRING CONCERT SILVER SPRING, MD SUNDAY, APRIL 8 • 4 PM

All-women's a cappella group singing in the barbershop style. If you like what you hear, join us Tuesday evenings for free and open rehearsals (see listing in Participatory Performing Groups section). At James Hubert Blake High School, 300 Norwood Rd, 20905. Info: **1-301-392-SONG (7664)**, admin@capitalaccord.org, or capitalaccord.org.

COASTAL BIRDS HOUSE CONCERT • TAKOMA PARK, MD SUNDAY, APRIL 8 • 7:30 PM

Seattle's **Martha Levenson** (fiddle and hardingfele) and western Massachusetts' **Emma Anderson**, (fiddle) play traditional Nordic tunes with captivating close harmonies and fresh arrangements, as well as newly composed tunes from around Scandinavia and the US. Suggested donation, \$20. Info/Rsvp/directions: **Julia, 301-412-6364**.

DAVID WILCOX + CARRIE NEWCOMER • ANNAPOLIS, MD SUNDAY, APRIL 8 • 7:30 PM

He's a gentle southern songwriter; she writes story songs reflecting her Quaker background. At Rams Head Onstage. \$35.



DWIGHT "BLACK CAT" CARRIER & THE ZYDECO RO DOGGS • WASHINGTON, DC SUNDAY, APRIL 8 • 3:30 PM (DOORS, 3 PM)

From musical Louisiana family; "Dancing By the Bayou" dance lesson during break. At Pearl Street Warehouse. \$20.

MOUNTAIN HEART + OPENERS GRAND OLE DITCH WASHINGTON, DC SUNDAY, APRIL 8 • 7:30 PM

High-energy acoustic string band + bluegrass sounds from western Maryland. At Gypsy Sally's. \$18/20.

SAM BUSH BAND + OPENER DANNY BURNS ALEXANDRIA, VA SUNDAY, APRIL 8 • 7:30 PM

Legendary mandolinist known as an originator of newgrass + Irish-born DC singer/songwriter. At Birchmere. \$29.50.

ANNA & ELIZABETH • WASHINGTON, DC SUNDAY, APRIL 15 • 8 PM

Anna Roberts-Gevalt moved to the mountains to learn the music; **Elizabeth LaPrelle** grew up absorbing it in rural Virginia. At Pearl Street Warehouse. \$15.

BALTIMORE IRISH TRAD FEST FRIDAY-SUNDAY, APRIL 13-15

Includes music & dance workshops, sessions, and a concert, all around Baltimore, featuring all-star regional talent & more. Info: baltimoreirisharts.com.

FEZ TONES HAFLA • GREENBELT, MD SUNDAY, APRIL 15 • 6 PM

Middle Eastern music & dance, you can dance too. At New Deal Café. No cover, donations encouraged.

LIVINGSTON TAYLOR • MANASSAS, VA SUNDAY, APRIL 15

Long-time performer, singer-songwriter, professor at Berkeley College of Music. At Hylton Performing Arts Center, 10960 University Blvd, 20110. \$30. Info: hyltoncenter.org/tickets/.

SGGL (RUSTY SPEIDEL, TOM GOODRICH, MICHAEL GOGGIN, & MICHAEL LILLE) + OPENERS THE SHERPAS (TOM PRASADA-RAO, MICHAEL LILLE, & TOM KIMMEL) ALEXANDRIA, VA

SUNDAY, APRIL 15 • 7:30 PM

Virginia-bred 'grassy folkrock + three soloists/friends joining forces. At Birchmere. \$35.

Concerts continued

SWEET YONDER WITH ELISA ZHAI AUTRY • VIENNA, VA
SUNDAY, APRIL 15 • 4 PM

DC bluegrass women joined by Chinese pipa master. At Jammin' Java. \$15.

ALAN DOYLE • WASHINGTON, DC
SUNDAY, APRIL 22 • 7:30 PM

Celtic rock from former member of *Great Big Sea*; Newfoundland's folk duo **Fortunate Ones** open. At The Hamilton. \$25–45.

DELTA RAE • ANNAPOLIS, MD
SUNDAY, APRIL 22 • 8 PM

Folk rock band from North Carolina. At Rams Head Onstage. \$32.50.

HAWKTAIL • ANNAPOLIS, MD
SUNDAY, APRIL 22 • 1 PM

Young acoustic quartet (formerly known as *Haas Kowert Tice*): **Brittany Haas** (fiddle), **Paul Kowart** (bass), **Jordan Tice** (guitar), **Dominick Leslie** (mandolin). At Rams Head Onstage. \$18.50.

REGGIE HARRIS AND GREG GREENWAY:**"DEEPER THAN THE SKIN" • ROCKVILLE, MD**
SUNDAY, APRIL 22 • 7:30 PM

National touring artists have been pleasing audiences and speaking out for justice for decades. At Tikvat Israel Congregation, 2200 Baltimore Rd, 20851. \$18 adv/FocusMusic members; \$20 door. Info: **Scott Moore, 301-461-3600**, or **FocusMusic.org**.

DANIKA AND THE JEB • BETHESDA, MD
SUNDAY, APRIL 29 • 7 PM

Danika Holmes has played in theaters, wineries, clubs, and living rooms around the U.S., U.K., and Europe. She has joined forces with guitarist **Jeb Hart** to pursue music full-time. At Positano Ristorante Italiano. \$18 adv/FocusMusic members; \$20 door. Info: **Jay Keating, 301-221-9000**, or **FocusMusic.org**.

JON STICKLEY TRIO • WASHINGTON, DC
SUNDAY, APRIL 29 • 8 PM

Bluegrass-rooted, with attitude. At Pearl Street Warehouse. \$12.

JUDY COLLINS • ANNAPOLIS, MD
SUNDAY, APRIL 29 • 4:30 PM + 7:30 PM

A legend, a glorious voice, songwriter and author, still going strong. At Rams Head Onstage. \$55.

*Tuesdays***MARK WENNER (OF THE NIGHTHAWKS)**
& THE **BLUES WARRIORS**
TUESDAY, APRIL 17 • 8:30 PM

At JV's Restaurant. No cover.

RUTHIE & THE WRANGLERS HOST
"NEW OLD JAMBOREE" • GREENBELT, MD
TUESDAY, APRIL 3 • 7 PM

Music old & new with featured guest artist TBA. At New Deal Café. No cover, donations encouraged.

STEVE EARLE & THE DUKES • ALEXANDRIA, VA
TUESDAY, APRIL 3 • 7:30 PM

Folk rock singer/songwriter leads 30th anniversary of "Copperhead Road"; alt-country duo **The Mastersons** open. At Birchmere. \$59.50.

KIVA • GREENBELT, MD
TUESDAY, APRIL 10 • 7 PM

Acoustic world music band. At New Deal Café. No cover, donations encouraged.

ALAN DOYLE • ANNAPOLIS, MD
TUESDAY, APRIL 17 • 8 PM

Celtic rock from former member of *Great Big Sea*; Newfoundland's folk duo **Fortunate Ones** open. At Rams Head Onstage. \$25.

WIL MARING & ROBERT BOWLIN • HERNDON, VA
TUESDAY, APRIL 17 • 7:15 PM (DOORS, 6 PM)

Singer-songwriter **Wil Maring** and virtuoso guitarist and fiddler **Robert Bowlin** straddle the fence between bluegrass, folk, and country. At Amphora's Diner Deluxe \$11; members, \$10. At the door or contact **Dave, DAHurdSr@cs.com**.

THE HIGH & WIDES • GREENBELT, MD
TUESDAY, APRIL 24 • 7 PM

Old time, bluegrass, boogie, country band. At New Deal Café. No cover, donations encouraged.

WE BANJO 3 • ANNAPOLIS, MD
TUESDAY, APRIL 24 • 8 PM

"CeltGrass"—acoustic Irish quartet plays old time, Irish, & bluegrass. At Rams Head Onstage. \$20.

*Wednesdays***ANA MOURA • VIENNA, VA**
WEDNESDAY, APRIL 4 • 8 PM

Young Portuguese fado singer. At Wolf Trap, the Barns. \$50–60.

BARRY JEAN ANCELET, PROFESSOR EMERITUS,
UNIVERSITY OF LOUISIANA:
"THE THEORY AND PRACTICE OF FOLKLORE IN CAJUN
AND CREOLE LOUISIANA"

WEDNESDAY, APRIL 4 • 12–1:30 PM

Folklorist and University of Louisiana Professor **Barry Ancelet**, a leading scholar, author, expert, and activist in the revival and revitalization of Cajun and Creole music and culture in Louisiana will talk about his career, fieldwork ex-

Concerts continued

periences, and current research. American Folklife Center's Benjamin Botkin Lecture Series. At Library of Congress, Jefferson Building, Whittall Pavilion. Free. Info: **Thea Austen, 202-707-1743; loc.gov/folklife.**

DOM FLEMONS DUO • WASHINGTON, DC WEDNESDAY, APRIL 4 • 8 PM

CD release for modern-day American songster, former member of *Carolina Chocolate Drops*. At Pearl Street Warehouse. \$20.

RICHARD THOMPSON • ALEXANDRIA, VA WEDNESDAY, APRIL 4 • 7:30 PM

Legendary English singer/songwriter/guitarist, solo; Louisville songwriter **Joan Shelley** opens. At Birchmere. \$35,

STEEL CITY JUG SLAMMERS • GREENBELT, MD WEDNESDAY, APRIL 4 • 7:30 PM

A real live jug band from Birmingham, Alabama. At New Deal Café. No cover, donations encouraged.

CHAO TIAN (ARTIST IN RESIDENCE) NORTH BETHESDA, MD

WEDNESDAY, APRIL 11 & 25 • 7:30 PM

Leading performer on Chinese dulcimer. At Strathmore Mansion. \$17.

DELLA MAE • WASHINGTON, DC WEDNESDAY, APRIL 11 • 8 PM

Female bluegrass combo with modern sounds. At Pearl Street Warehouse. \$15.

PAINT BRANCH CREEK • GREENBELT, MD WEDNESDAY, APRIL 11 • 7 PM

Acoustic Americana band. At New Deal Café. No cover, donations encouraged.

THE BROTHER BROTHERS • WASHINGTON, DC WEDNESDAY, APRIL 18 • 8:15 PM

Real old-time sibling harmonies from real brothers. At Pearl Street Warehouse. \$10.

EXPLORATION OF TRADITIONAL MUSIC & CHINESE DULCIMER BY CHAO TIAN • NORTH BETHESDA, MD WEDNESDAY, APRIL 18 • 7:30 PM

At Strathmore Mansion. Free, registration required.

JANIVA MAGNESS • ANNAPOLIS, MD WEDNESDAY, APRIL 18 • 8 PM

Blues old and new. At Rams Head Onstage. \$25.

ANA POPOVIC • VIENNA, VA WEDNESDAY, APRIL 25 • 8 PM

The "Serbian Scorcher," she really plays the blues. At Wolf Trap, the Barns. \$30–35.

WE BANJO 3 • NORTH BETHESDA, MD WEDNESDAY, APRIL 25 • 8 PM

"Celtgrass" from Irish quartet. At AMP by Strathmore. \$25–30.

Thursdays

CARPE DIEM! JUMP START WITH THE ARTS FAMILY FUN NIGHT OUT AT EL GOLFO • SILVER SPRING, MD THURSDAY, APRIL 5 • 5:45 AND 6:45 PM (TWO 25-MINUTE SHOWS)

Featuring **Nick Newlin** of *Nicolo Whimsey*. April Fools' shenanigans! At El Golfo Restaurant, 8739 Flower Ave, 20901. Free for children; adults, \$5 (incl. free drink or ice cream). Presented by Carpe Diem Arts and Evergreen School with support from Finn Family Group, Washington Revels, El Golfo, and WOWD-FM LP Takoma Radio. Info: **BusyGraham@carpediemarts.org** or **301-466-0183**; or **carpediemarts.org/family-fun-night**.

DAN NAVARRO • SYKESVILLE, MD THURSDAY, APRIL 5 • 8 PM

Singer, guitarist, songwriter (and voice actor); 25 years with music partner Eric Lowen. At Baldwin's Station. \$25.

NEW BREED BRASS BAND • FREDERICK, MD THURSDAY, APRIL 5 • 7:30 PM

Modern interpretations of brassy New Orleans music. At Weinberg Center for the Arts. \$10 suggested.

THE HILLBENDERS PRESENT THE WHO'S "TOMMY: A BLUEGRASS OPRY" • WASHINGTON, DC THURSDAY, APRIL 12 • 7:30 PM

The full-tilt bluegrass/country band takes on the first genuine rock opera. At The Hamilton. \$20–40.

JOHN MCCUTCHEON • VIENNA, VA THURSDAY, APRIL 19 • 8 PM

Pete Seeger called him "one of the best musicians in the USA," still entertaining, still topical. At Wolf Trap, the Barns. \$25–28.

LOS LOBOS • ALEXANDRIA, VA THURSDAY, APRIL 19 • 7:30 PM

Latino roots rock from East L.A.; **Dean Rosenthal Duo** opens. At Birchmere. \$49.50.

MADHUSMITA BORA'S SATTRIYA DANCE COMPANY OF PHILADELPHIA AND THE DANCING MONKS OF ASSAM, INDIA • WASHINGTON, DC THURSDAY, APRIL 19 • 12–1 PM

Sattriya is a 600-year-old dance from the Vaishnavite monasteries of northeast India. A living art form, it is preserved mostly by celibate monks on the river island of Majuli. The **Dancing Monks of Assam** are monk artists led by Sattriya exponent **Adhyapak Bhabananda Barbayan**. American Folklife Center's 2018 Homegrown Concert Series. At Library of Congress, Jefferson Building, Coolidge Auditorium. Free. Info: **Thea Austen, 202-707-1743; loc.gov/folklife.**

Concerts continued

STEEP CANYON RANGERS • WASHINGTON, DC

THURSDAY, APRIL 19 • 7:30 PM

North Carolina bluegrass (without Steve Martin on this tour); opener TBA. At The Hamilton. \$24.75–39.75.

TRIBUTE TO JOHN DENVER • SYKESVILLE, MD

FEATURING BILL DANOFF & SEAN MCGHEE WITH

RON GREENSTEIN & PAUL PRESTOPINO

THURSDAY, APRIL 19 • 8 PM

Some favorite music performed by people who knew and worked with John. At Baldwin's Station. \$22.

A BOY NAMED BANJO + GHOST OF PAUL REVERE

WASHINGTON, DC

THURSDAY, APRIL 26 • 8 PM

Americana/roots rock + "holler folk" with bluegrass instruments. At Gypsy Sally's. \$18/20.

SIERRA HULL • VIENNA, VA

THURSDAY, APRIL 26 • 8 PM

A bluegrass prodigy on mandolin and guitar, she also writes and sings old songs and new. At Wolf Trap, the Barns. \$25–27.

SIRENS OF SOUTH AUSTIN: BETTYSOO +**GRACE PETTIS + REBECCA LOEBE • VIENNA, VA**

THURSDAY, APRIL 26 • 7:30 PM

Collaboration of young, award-winning songwriters. At Jammin' Java. \$20.

*Fridays***ERIN HARPE & THE DELTA SWINGERS**

NORTH BETHESDA, MD

FRIDAY, APRIL 6 • 8 PM

Album release show; blues old & new; now Boston-based, she has Annapolis roots; rockers **L.A.T.O.** open. At AMP by Strathmore. \$20–25.

JOYCE SCOTT • BALTIMORE, MD

FRIDAY, APRIL 6 • 7:30 PM

Baltimore singer of gospel, blues, and jazz, educator, and visual artist, joined by **Derrick Thompson & Lorraine Whittlesey**. At The Church of the Redeemer, 5603 N. Charles St., 21210. \$25/22 senior/student. Info: **CommonGroundOnTheHill.org**.

MARTY STUART & HIS FABULOUS SUPERLATIVES

ALEXANDRIA, VA

FRIDAY & SATURDAY, APRIL 6 & 7 • 7:30 PM

Country, bluegrass, Americana, rockabilly. At Birchmere. \$59.50.

URSULA RICKS PROJECT • GREENBELT, MD

FRIDAY, APRIL 6 • 8:30 PM

Blues & soul band. At New Deal Café. No cover, donations encouraged.

BALTIMORE IRISH TRAD FEST

FRIDAY–SUNDAY, APRIL 13–15

See Sunday listings.

BLACK MASALA • GREENBELT, MD

FRIDAY, APRIL 13 • 9 PM

From New Orleans to Belgrade, brassy world music. At New Deal Café. No cover, donations encouraged.

BOB MARGOLIN & THE NIGHTHAWKS

GERMANTOWN, MD

FRIDAY, APRIL 13 • 8 PM

Member of Muddy Waters' band with DC's legendary blues-rockers. At BlackRock Center for the Arts. \$25–45.

DAVID SACKS & DC CHORO • TAKOMA, DC

FRIDAY, APRIL 13 • 7:30 PM (DOORS, 7 PM)

Brazilian Choro by esteemed 2nd generation musicians. Presented by Carroll Cafe. At Seekers Church. \$18 adv; \$20 door. Tickets/info: **carrollcafe.org**.

ELLIS PAUL + OPENER KIPYN MARTIN • TIMONIUM, MD

FRIDAY, APRIL 13 • 8 PM

New England singer songwriter has been called literate, provocative, and also fun; opener has beautiful voice and is an excellent songwriter. At Cellar Stage. \$20.

JANIVA MAGNESS • VIENNA, VA

FRIDAY, APRIL 13 • 8 PM

Blues old and new. At Jammin' Java. \$18–25.

LOVE CANON • WASHINGTON, DC

FRIDAY, APRIL 13 • 8:15 PM

Bluegrass interpretations of 80s pop. At Pearl Street Warehouse. \$20.

ROBINSON & ROHE • ANNAPOLIS, MD

FRIDAY, APRIL 13 • 7:30 PM

Jean Rohe and **Liam Robinson**, from Brooklyn, present their compelling new songs in the American folk idiom. At Annapolis Friends Meeting Hall. \$12; \$10 students/65+/ATDS/FSGW/BFMS members. Info: **333concerts.org**, **443-333-9613**, or **333coffeehouse@gmail.com**.

TOMMY CASTRO & THE PAINKILLERS • ANNAPOLIS, MD

FRIDAY, APRIL 13 • 8 PM

Six-time Blues Music Award winner leads the band. At Rams Head Onstage. \$35.

THE LAST REVEL • WASHINGTON, DC

FRIDAY, APRIL 20 • 8:30 PM

"Front Porch Americana" from Minneapolis trio. At Pearl Street Warehouse. \$15.



Concerts continued

LETITIA VANSANT • BRENTWOOD, MD

FRIDAY, APRIL 20 • 8 PM

With a "honey-kissed" voice, Letitia's music talks about humanity, empowerment, and destiny. At The Listening Room of Brentwood Arts Exchange, 3901 Rhode Island Ave, 20722. \$15. Info: **301-277-2863** or arts.pgparks.com.

LOS LOBOS • ANNAPOLIS, MD

FRIDAY, APRIL 20 • 6:30 PM + 9:30 PM

Latino roots rock from East L.A. At Rams Head Onstage. \$65.

Saturdays

DAVID WILCOX + CARRIE NEWCOMER

WASHINGTON, DC

SATURDAY, APRIL 7 • 8:30 PM

He's a gentle southern songwriter; she writes story songs reflecting her Quaker background. At Miracle Theatre, 535 8th St SE, 20003. \$35. Info: themiracletheatre.ticketfly.com.

MIPSO • WASHINGTON, DC

SATURDAY, APRIL 7 • 8 PM

Indie Americana or "traditionalist renegade" string band; **Tom Brosseau** opens. At The Hamilton. \$15–20.

THE MOXIE BLUES BAND • GREENBELT, MD

SATURDAY, APRIL 7 • 8:30 PM

Blues, blues rock. At New Deal Café. No cover, donations encouraged.

BALTIMORE IRISH TRAD FEST

FRIDAY–SUNDAY, APRIL 13–15

See Sunday listings.

DON MCLEAN • ALEXANDRIA, VA

SATURDAY, APRIL 14 • 7:30 PM

Known for "American Pie" and "Vincent (Starry Starry Night)," he's still writing and touring. At Birchmere. \$55.

FATOUmata DIAWARA + ELIKEH • GERMANTOWN, MD

SATURDAY, APRIL 14 • 8 PM

World music from singer songwriter of Malian heritage + long-time DC band with roots in Togo. At BlackRock Center for the Arts. \$21–35.

RED MOLLY • WASHINGTON, DC

SATURDAY, APRIL 14 • 8 PM

Americana/roots, great harmonies, artful instrumentation from **Laurie MacAllister**, **Abbie Gardner**, & **Molly Venter**; **Marc Douglas Berardo** opens. At The Hamilton. \$19.75–42.50.

TOMMY CASTRO & THE PAINKILLERS

WASHINGTON, DC

SATURDAY, APRIL 14 • 8:15 PM

Six-time Blues Music Award Winner; country artist **Risa Binder** opens. At Pearl Street Warehouse. \$25.

WASHINGTON REVELS MARITIME VOICES AT U.S. NAVY MEMORIAL • WASHINGTON, DC

SATURDAY, APRIL 14 • 12:30–4:00 PM

The U.S. Navy Memorial hosts its annual "Blessing of the Fleets." Come for the ceremonial pouring of the waters from each of the Seven Seas and the Great Lakes and hear **Washington Revels Maritime Voices'** new program, "A Musical Voyage Across the Seven Seas." Plus enjoy navy bean soup prepared by Navy culinary specialists from the White House Mess. At U.S. Navy Memorial Plaza, 701 Pennsylvania Ave NW, 20004. Free. Info: **Ross Wixon**, rwixon@revelsdc.org or **301-830-4402**; revelsdc.org/shows-events/.

ACOUSTIC EIDOLON, WITH ROB GOULD

ALEXANDRIA, VA

SATURDAY, APRIL 21 • 7 PM



String the standard 6-string acoustic like a 5-string banjo, add 8 more strings and you have a guitjo. Add a cello and you have **Acoustic Eidolon**. At St. Aidan's Episcopal Church, 8531 Riverside Rd, 22308. \$18 adv/FocusMusic members; \$20 door. Info: **Herb Levy**, **703-380-3151**, or FocusMusic.org.

JOHN POPPER • ANNAPOLIS, MD

SATURDAY, APRIL 21 • 8:30 PM

Former lead of *Blues Traveler*, noted blues harmonica master. At Rams Head Onstage. \$48.50.

JOSEPH ISAACS MUSIC MATTERS SHOWCASE:

DOMINIC LARocca, TOMAS DRGON, ALANI SUGAR

COLUMBIA, MD

SATURDAY, APRIL 21 • 6:30–9:30 PM

Come hear great free music (voluntary donations for homeless accepted). You hear four talented acts in one night. Each act plays two 4-song sets. At Mad City Coffee. Info: **410-964-8671**, madcitycoffee.com, josephisaacs.com/.

MANDOLIN ORANGE • FREDERICK, MD

SATURDAY, APRIL 21 • 8 PM

Americana/folk duo from North Carolina. At Weinberg Center for the Arts. \$25–30; senior/student/military discounts.

TAREQ RANTISI & THE MAQAM ENSEMBLE

WESTMINSTER, MD

SATURDAY, APRIL 21 • 7:30 PM

Fusing contemporary & classical Arabic music with world music & jazz. At Carroll Arts Center, 91 W. Main St, 21157. \$25; senior/student, \$22. Info: CommonGroundOnTheHill.org.

ERIC BRACE, PETER COOPER & THOMM JUTZ TRIO

VIENNA, VA

SATURDAY, APRIL 28 • 6:30 PM

Great stories from talented songwriters, **Eric** with DC roots. At Jammin' Java. \$15/22.

Concerts continued

*WASHINGTON REVELS GALLERY VOICES AT THE
NATIONAL ARBORETUM • WASHINGTON, DC*
SATURDAY, APRIL 28 • 9 AM TO 4 PM

Washington Revels Gallery Voices performs timeless madrigals during the Friends of the National Arboretum's annual Garden Fair and Plant Sale. FONA Members can hear the *Voices* during the "Members Only" sale from 9 am to noon, and everyone can enjoy the music during the 12–4 pm public sale. See *Revels'* website for performance times. While you're at the fair, be sure to dance the maypole! At 3501 New York Avenue NE, 20002. Free. Info: **Ross Wixon**, rwixon@revelsdc.org or **301-830-4402**; revelsdc.org/shows-events/.



FAST EDDIE & THE SLOW POKES • GREENBELT, MD
SATURDAY, APRIL 28 • 8:30 PM

Blues, R&B, classic rock. At New Deal Café. No cover, donations encouraged.

HAMMERED AND MOUNTAIN DULCIMER RENTALS, rentadulcimer.com, **301-609-2140**. 10% discount to FSGW members.

LISA NULL is accepting a few new voice students: basic vocal techniques, coaching in traditional styles. Downtown Silver Spring. FREE mutual interview! enul@starpower.net or **301-587-2286**

classes

Mondays

SCOTTISH COUNTRY DANCE • BETHESDA, MD
MONDAYS • 7:30–9:30 PM

At National Institutes of Health Building T-39 (Dance and Aerobic Center). Call or email in advance for directions. Drop-in fee, \$5. Info: **John MacLeod**, **301-622-5945**, blackolav@gmail.com, or rscds-greaterdc.org.

**WASHINGTON REVELS SPRING
AFTER-SCHOOL WORKSHOPS • SILVER SPRING, MD**
SPRING TERM RUNS APRIL 5 TO JUNE 7
MONDAYS (AGE 7–8), THURSDAYS (AGE 9–11),
AND FRIDAYS (AGE 4–6)

Be a Revels Kid! Revels Kids learn the confidence to lead, the importance of teamwork, and the empathy to care for others and the world around them through traditional games, songs, stories, and dances from around the world. Revels is excited that its artistic director, **Roberta Gasbarre**, returns to coteach the Jesters workshop. Classes meet at the Washington Revels Studio Space. Ten sessions, \$300. Learn more and register at revelsdc.org/revels-kids/education/.

Tuesdays

SCANDINAVIAN DANCE CLASSES • BETHESDA, MD
TUESDAYS, APRIL 3, 10, 17, & 24 • 7:30–9:30 PM

Beginning and advanced dancers welcome. Learn hambo, schottis, polskas, springars, and other Swedish and Norwegian couple-turning dances, including requests. Wear smooth-soled shoes (leather soles are best) for turning, not running shoes. \$5. First time free. Info/address: **Lynn Walker**, **301-834-4020**, lisa@HamboDC.org, or Hambodc.org.

SCOTTISH COUNTRY DANCE • GREENBELT, MD
TUESDAYS • 8–10 PM

Dance all year 'round at the Greenbelt Community Center. \$8. Info: **Jay Andrews**, **703-719-0596** or andrewj@rcn.com.

Newsletter submissions: See instructions on page 2

Wednesdays

THE NORDIC DANCERS OF WASHINGTON, DC
SILVER SPRING, MD

WEDNESDAYS, MARCH THROUGH MAY, 7:30–10 PM

The Nordic Dancers preserve the traditions of community dance groups in Denmark, Finland, Iceland, Norway, and Sweden. Newcomers are welcome. No prior dance experience or partner necessary. Music by fiddler **Paul Carlson**, a professional musician and teacher widely recognized for his skill and enthusiasm for Scandinavian music. At Highland View Elementary School, 9010 Providence Ave, 20901. No charge first time; \$4 per session thereafter. Info: **Chris Kalke**, **301-864-1596**, ckalke@verizon.net; sites.google.com/site/nordicdancersdc/.

Thursdays

GWCC ADULT SET AND CEILI DANCE CLASS
SILVER SPRING, MD
THURSDAYS • 7–9:30 PM

The Greater Washington Ceili Club holds weekly adult Irish set and ceili dance classes in a friendly, relaxed environment. No experience or partner needed. Wear comfortable clothes and leather or smooth-soled shoes. In addition to weekly instruction, there is a monthly mini-ceili with live music and open to all on the 3rd Thursday each month (small donation requested for musicians). At Argyle Park Activities Bldg, 1030 Forest Glen Rd, 20901. \$50/season, register and pay at class, first class free. Info: **301-649-6410**, info@gwcc-online.org, or gwcc-online.org.

**WASHINGTON REVELS SPRING
AFTER-SCHOOL WORKSHOPS • SILVER SPRING, MD**
SPRING TERM RUNS APRIL 5 TO JUNE 7
MONDAYS (AGE 7–8), THURSDAYS (AGE 9–11),
AND FRIDAYS (AGE 4–6)

See listing under Mondays.

fsgw dances

See Frequent Venues for many location addresses on page 27.

FSGW SUNDAY NIGHT DANCES

AT GLEN ECHO PARK, MD · SPANISH BALLROOM

CONTRAS AND SQUARES · 7:30-10:30 PM

INTRODUCTORY LESSON EVERY SUNDAY · 7-7:30 PM

Join us for an evening of dancing at Glen Echo Park. Every Sunday, FSGW (in cooperation with the National Park Service, Montgomery County, and the Glen Echo Park Partnership for Arts and Culture) presents contras and squares danced to live music by fabulous bands with entertaining callers. Experienced and new dancers welcome; no partner needed. **Welcome/Orientation session every Sunday at 7. Come early for an introduction to the basic moves.** Dances often become more challenging as the evening progresses. Bring water or a sports drink, and dress in layers. Smooth-soled shoes are kindest on your knees and ankles when turning. \$10 for FSGW, BFMS, CDSS, and ATDS Members, \$5 youth (with student ID if over 17) • \$13 for the general public Info: **Penelope Weinberger** or **Steve Roth**; dance@fsgw.org.

April

1 Bob Isaacs with Tempest One of our favorite East Coast callers, **Bob Isaacs**, with **Tempest: Chuck Abell** (guitar, vocals), **Tim Ball** (fiddle, vocals), **Harry Aceto** (bass), and **Eric Metzgar** (drums) blending traditional tunes with inventive, progressive grooves and harmonies that draw from jazz, world music, and pop/R&B!



8 Alex Deis-Lauby with ContraPositive No-tune-repeated Midatlantic tour: **ContraPositive** and **Alex Deis-Lauby** are coming to town, with an all-new slate of tunes every single night! Blending sweet Irish fiddle, Scottish drive, and harmonic improvisation, **ContraPositive: Matt Diaz** (guitar and more), **Joe de Paolo** (drums), and **Matthew Christian** (fiddle, flute, whistle) bring the best of contemporary contra styles. Caller **Alex Deis-Lauby's** smooth voice, clear teaching style, and engaging dance selections delight dancers from coast to coast.



15 Don Veino with Dead Sea Squirrels From the Scout House in Concord, MA, **Don Veino** calls with the **Dead Sea Squirrels: Cathy Mason** (fiddle), **Henry Yoshimura** (guitar), and **Paul Boyd** (fiddle and banjo), a versatile band that plays the traditional music of the south with African-rooted rhythms; Cajun waltzes; Celtic-influenced guitar nuances; and old-time fiddle and banjo for your dancing pleasure.



22 Kappy Laning with Squirrely Dan and the Eastern Rounders Calling is **Kappy Laning**, with **Squirrely Dan and the Eastern Rounders: "Squirrely" Dan Levenson**, originally from the Squirrel Hill community of Pittsburgh, PA (fiddle, banjo, vocals) and from Tucson, **John Walkenbach** (guitar) and **Jerry Weinert** (bass) bringing humor and keeping us grounded in the music.



SUNDAY NIGHT DANCES CONTINUED ON PAGE 14.

fsgw dances continued

36th Annual Chesapeake Dance Weekend!

Continued from the front page.

Any dance party with callers **Janine Smith** and **Will Mentor** is sure to leave you feeling energized and pampered at the same time. Switching between compelling contras and sizzling squares, these polymaths will amaze you with their versatility and make you feel like a real expert. You won't want to miss our hash-contra set! Complementing our dance gurus, our bands are new combinations of classic talents. **Chameleon** (formerly *Gigmeisters*), featuring **Alexander Mitchell**



(fiddle), **Dave Wiesler** (piano), and **Paul Oorts** (mandolin, banjo, accordion, and more), will captivate you with their unique interpretations of traditional tunes. **Rachel Eddy & the Rock Farmers**, featuring **Rachel** (fiddle), **Jonathan Vocke** (guitar), and **Jay White** (banjo) will keep your feet moving with their sweet, hard-driving southern sound. And if you're up for trying something new, take the honky-tonk plunge! What is honky-tonk? Let **Ed Fizdale** and **Su Peck** fill you in, accompanied by the soulful vocals and crisp back-beats of **Jesse Milnes** (vocals & fiddle), **Emily Miller** (vocals & guitar), and **Joe Dejarnette** (bass).



So come join the Chesapeake Dance Weekend at Camp Letts, our home for the last 36 years. This scenic getaway overlooks the pristine natural setting of a Chesapeake Bay inlet, fifteen

minutes from Annapolis and less than an hour from DC. All meals are included from Friday dinner through Sunday lunch. Campers are housed in heated dormitory-style cabins; tenting is also available as an option. For more details or to register, visit **ChesapeakeDanceWeekend.org**. See you at camp!



Newsletter update: Beginning with new memberships or renewals due on or after April 1, 2018, the subscription rate (to receive paper newsletters in the mail) will be \$15 per year. The following year, beginning with new memberships or renewals due on or after April 1, 2019, the subscription rate will be \$30 per year.

fsgw dances continued

FSGW English Country Dances

Glen Echo, MD • Wednesdays • 8–10:30 pm

Dance on a wood floor in the climate-controlled community room of the Glen Echo Town Hall. Bring clean, nonscuffing shoes for dancing. Cheerful, patient, talented callers are accompanied by top-notch musicians—every Wednesday a different and delightful mix of instruments, including piano, fiddle, flute, oboe, concertina, bassoon, cello, viola, and recorder. Light refreshments served at the break. Experienced and new dancers welcome. No partner required. **\$10 for FSGW members, \$12 for nonmembers.** Info: English@fsgw.org.

April

4

Beginner Session starts at 7:30. **April Blum** calls the dances to the music of **Colleen Reed** (flute), **Ralph Gordon** (cello), and **Francine**



Krasowska (piano).

18

Tom Spilsbury calls the dances while **Barbara Heitz** (flute), **Jeff Steinberg** (fiddle), and **Melissa Running** (piano) play the music.



11

Kappy Laning and **Melissa Running** call the dances, while **Susan Brandt** (flute), **Paul Oorts** (mandolin, accordion), and **Liz Donaldson** (piano) play the tunes.



25

Anna Rain calls to the playing of **Becky Ross** (fiddle), **Sophie Chang** (cello), and **Liz Donaldson** (piano).



FSGW SUNDAY NIGHT DANCES CONTINUED FROM PAGE 12.

29 **Emily Rainbowface Abel** with **Chimney Swift**. **Emily Rainbowface Abel**—Woot!—calls with **Chimney Swift**: **Cecile Leroy** (cello), **Daniel Raine** (cittern/guitar), **Zoë Madonna** (accordion), and **Yaron Shragai** (doubek/whistles), an eclectic, groovy contra dance band based in and around Somerville, MA.



fsgw dances continued

FSGW FAMILY DANCE · GLEN ECHO, MD

PENELOPE PINEAPPLE & RHYS PIECES

SUNDAY, APRIL 8 · 3-5 PM



Penelope Pineapple calls with **Rhys Jones** and friends. Rhys is a nationally recognized fiddle player with amazing chops. This family dance might draw a few adults with no kids in tow, just to enjoy Rhys! At Glen Echo Park, Spanish Ballroom Annex. \$5. Info: **Penelope Weinberger** or **Steve Roth**, dance@fsgw.org.



FSGW CONTRA SONIC · GLEN ECHO, MD

TUESDAY, APRIL 17 · 7:30-11 PM

Hold the date, performers TBA! At Glen Echo Park, Spanish Ballroom Annex. Info: **Penelope Weinberger** or **Steve Roth**, dance@fsgw.org.



FSGW-COSPONSORED:

CARPE DIEM! CONTRA DANCE · SILVER SPRING, MD

THURSDAY, APRIL 12 · 7:30-10 PM

(FREE INTRO WORKSHOP 7 PM)

Beginners welcome! Intro workshop from 7-7:30 pm, dancing from 7:30-10. **Gaye Fifer** calls to music by **Brad Kolodner** (banjo/fiddle), **Rachel Eddy** (fiddle/guitar), and **Luke Chohany** (guitar/mandolin). Presented by Carpe Diem Arts in partnership with FSGW and Washington Revels and with support from Montgomery County Department of Recreation. In the Great Hall, Silver Spring Civic Building. \$10; FSGW/BFMS/CDSS/Revels members, \$8; students and those without income, \$5; first-timers, free. Info: **Bob Mathis**, talibob@starpower.net; or **Busy Graham**, BusyGraham@CarpeDiemArts.org or 301-466-0183; or carpediemarts.org/dance-with-us, revelsdc.org/, or fsgw.org.



FSGW-COSPONSORED:

GLEN ECHO INTERNATIONAL FOLK DANCERS · BETHESDA, MD

THURSDAYS · 7:30-10:45 PM

Lesson at 7:30 pm, request dances from 9 to 10:45 pm. Mostly recorded music. No partner or experience necessary. Wear comfortable clothing and soft-soled shoes. Cosponsored by FSGW. At Church of the Redeemer, 6201 Dunrobbin Dr, 20816 (near the intersection of Goldsboro and MacArthur). \$5 Info: **Jamie**, 301-466-3018 or dancingplanet@erols.com.

fsgw dances continued

FSGW-COSPONSORED:



THE GREAT AMERICAN SQUARE DANCE REVIVAL WASHINGTON, DC

SATURDAY, APRIL 14 • 8:30–11:30 PM

The DC Square Dance Collective is celebrating seven wildly successful years of presenting traditional Appalachian square dances. This month we'll have old-time dance tunes played by *The Sligo Creek Stompers*. Caller **Gabe**



Popkin shows you how it's done and will have you up and do-si-do-ing in no time flat.

Come see what it's all about, right in the heart of DC on a swingin' Saturday night. All are welcome—young and old, brand new and experienced dancers, hipsters and total outta-the-loopers. No partner, lessons, overalls, or fancy dress needed. At Saint Stephen's Church. \$5 at the door. Info: dcsquaredance.com.

dances

See Frequent Venues for many location addresses on page 27.

Sundays

FSGW SUNDAY NIGHT DANCES

GLEN ECHO, MD

CONTRAS AND SQUARES • 7:30–10:30 PM

INTRODUCTORY LESSON EVERY SUNDAY • 7–7:30 PM



See page 12.

AFTERNOON WALTZ • GLEN ECHO, MD

SUNDAYS • 3:30–6 PM (INTRO LESSON, 2:45)

Join us for an afternoon of waltzing. The band will play a lively mix of folk waltzes with other couples dances, including hambo, swing, tango, and polka. No partner required. All welcome. At Glen Echo Park, Spanish Ballroom. \$13; \$5 with valid student ID. Cash or check accepted. Info: WaltzTimeDances.org.

April

- 8 **Firefly:** Jane Ziki (fiddle, melodica), Linda Rowan (fiddle), Beverly Russell (hammered dulcimer), and Diane Sorenson (keyboard).
- 22 **Chameleon:** David Wiesler (piano), Alexander Mitchell (fiddle), Paul Oorts (button accordion, mandolin, banjo, guitar), and Ralph Gordon (bass).

GWCC CEILI • COLLEGE PARK, MD

SUNDAY, APRIL 22 • 3–8 PM

The Greater Washington Ceili Club (GWCC) sponsors a 4th Sunday dance (Sept–May). Music this month by **Laura Byrne & Friends**. The Camus Set will be taught by **Marilyn Moore** at the 3 pm workshop—a beginner-friendly dance. Ceili, 4–8 pm, with potluck dinner during the first break; please bring a dish to share. Smooth-soled shoes recommended, single danc-

ers welcome. At The Cherry Hill Park Ballroom. \$20; members, \$15. Ages 11–20, half-price. Ages 10 and under, free. Info/entrance code: 301-512-4480 or gwcc-online.org.

Mondays

BETHESDA INTERNATIONAL FOLK DANCE

BETHESDA, MD

MONDAYS • 7:30–10 PM

Come join our friendly group and learn dances from all over the world. Beginners, 7:30–8 pm; Intermediate/Advanced, 8–10 pm (requests from 9:15–10 pm). No partner needed. All levels of experience welcome. Adults over 16. Mostly recorded music; wonderful wood floor. At Jane Lawton Community Ctr, 4301 Willow Ln, 20815. \$7. Info: **Phyllis** or **Brandon Diamond**, 301-871-8788 or DiamondDanceCircle.com; or DiamondDanceCircle@comcast.net.

BALTIMORE FOLK MUSIC SOCIETY

ENGLISH COUNTRY DANCE • PIKESVILLE, MD



MONDAYS • 8–10:30 PM

English country dancing is lively movement to elegant music in a friendly, informal setting. All dances are taught and walked through. New dancer orientation first Mondays at 7:45 pm. At St. Mark's on the Hill Parish Hall. \$13; BFMS/ATDS/FSGW/CDSS members, \$9; students, \$6 (members, \$4). Info: **Sharon McKinley**, 410-660-9147 or engdance@bfms.org.

April

- 2 Free New Dancer Orientation at 7:45
April Blum calls to the music of **Emily Aubrey** (violin), **Mark Vidor** (accordion), and **Judy Meyers** (piano)

- 9 **Ann Fallon** calls to the music of **Robin Wilson** (flute and concertina), **Wayne Hankin** (winds), and **Jonathan Jensen** (piano and more)
- 16 **Sharon McKinley** will be the caller; music provided by **Carl Friedman** (violin), **Steve Epstein** (clarinet), and **Ben Hobbs** (piano)
- 23 **Emily Aubrey** calls the figures; music by **Susan Brandt** (flute), **Tom Wright** (mandolin), and **Liz Donaldson** (piano)
- 30 **Diane Schmit** calls the figures; music by **Jeff Steinberg** (violin), **Dave Crandall** (winds), and **Janina O'Brien** (piano and more)

Tuesdays

ISRAELI DANCING • CHEVY CHASE, MD

TUESDAYS • 7–10:30 PM

Instruction from 7 to 7:45 pm. We focus on building a repertoire of both classic and newer Israeli dances in a friendly, welcoming atmosphere. Recorded music. Light refreshments served. At Ohr Kodesh Congregation, 8300 Meadowbrook Ln, 20815. \$8; students, \$6. Info: **Mike Fox, 240-424-0805** or markidmike.com.

Wednesdays

FSGW ENGLISH COUNTRY DANCE

GLEN ECHO, MD

EVERY WEDNESDAY • 8–10:30 PM



See page 14.

BALTIMORE FOLK MUSIC SOCIETY CONTRA DANCE • BALTIMORE, MD

WEDNESDAYS • 8–10:30 PM

Beginners always welcome. New dancer workshops at 7:30 pm. Nationally known musicians and callers appear regularly. \$13; BFMS/FSGW members, \$9. At Lovely Lane Church, 2200 St. Paul St, 21218. Info: bfms.org.

April

- 4 TBA calls to the **Lovely Lane String Band**: **Brenna Hogan** (fiddle), **Shane Knudsen** (fiddle), **John Sauer** (guitar), **Jay White** (banjo), and **Artie Abrams** (bass).
- 11 **Anne Lutun** calls to the **Dead Sea Squirrels**: **Craig Edwards** (fiddle), **Cathy Mason** (fiddle), and **Henry Yoshimura** (guitar).
- 18 **Anna Rain** calls to **Organic Family Band**: **Michael Raitzyk** (guitar), **Jakob Raitzyk** (fiddle), **Rebekah Gellar** (fiddle), and **Judith Gellar** (French horn).
- 25 TBA calls to **Squirrely Dan and the Eastern Rounders**: **Dan Levenson** (fiddle), **Emmy Truckenmiller** (fiddle), **Annie Trimble** (guitar), and **Suzanne Gates** (bass).



Newsletter submissions: See instructions on page 2

dances continued

THE NORDIC DANCERS OF WASHINGTON, DC

SILVER SPRING, MD

WEDNESDAYS, OCT–MAY, 7:30–10 PM

The Nordic Dancers preserve the traditions of community dance groups in Denmark, Finland, Iceland, Norway, and Sweden. Newcomers are welcome. No prior dance experience or a partner is necessary. Music by fiddler **Paul Carlson**, a professional musician and teacher widely recognized for his skill and enthusiasm for Scandinavian music. At Highland View Elementary School, 9010 Providence Ave, 20901. No charge the first time; \$4 per session thereafter. Info: **Chris Kalke, 301-864-1596**, ckalke@verizon.net, or sites.google.com/site/nordicdancersdc/.

Thursdays

FSGW-COSPONSORED: GLEN ECHO

INTERNATIONAL FOLK DANCERS • BETHESDA, MD

THURSDAYS • 7:30–10:45 PM



See page 15.

FSGW-COSPONSORED: CARPE DIEM! CONTRA DANCE • SILVER SPRING, MD

THURSDAY, APRIL 12 • 7:30–10 PM

(FREE INTRO WORKSHOP 7 PM)



See page 15.

ALEXANDRIA FOLK DANCERS • ALEXANDRIA, VA

THURSDAYS • 8–10 PM

We welcome beginners and advanced dancers; no partner necessary. Friendly and diverse group; fabulous wooden floor; and a mix of easy dances, advanced instruction, and requested dances. At Mt. Vernon Unitarian Church, 1909 Windmill Ln, 22307. Donation, \$5. Info: northernvirginia-folkdance.org or **Patricia, 703-472-3888** or pdw@patriciadaywilliams.com.

BACK ROOM BLUES • GLEN ECHO, MD

THURSDAYS • 8:15–11:30 PM

Popular weekly blues dance. Sprung wood floor. Beginner lesson from 8:15 to 9 pm. Different DJs and instructors play blues from 9 to 11:30 pm. In the "Back Room" at the Spanish Ballroom, Glen Echo Park. Info: **Donna Barker, 301-634-2231** or CapitalBlues.org.

CHALLENGING ENGLISH COUNTRY DANCE

ADELPHI, MD

3RD THURSDAYS, APRIL 19 • 7:30–9:30 PM

A monthly ECD series. All dancers of all skill levels are welcome. This month **Dan Gillespie** calls to music by **Francine Krasowska** (piano), **David Knight** (violin), and **Ralph Gordon** (cello). At Ballroom Blum. Suggested donation, \$8/person or \$15/couple. Info/directions: **301-422-0292** or jerry-andapril@aol.com.




dances continued

Fridays

FRIDAY NIGHT DANCERS • GLEN ECHO, MD

FRIDAYS • 8:30–11:30 PM

(NEW DANCER CLASS EVERY WEEK, 7:30–8:15 PM)



The Friday Night Dancers, a nonprofit, volunteer-based organization, in cooperation with the National Park Service, Montgomery County, and the Glen Echo Park Partnership for Arts and Culture, sponsors weekly contra dances to live music in the historic Glen Echo Spanish Ballroom (unless otherwise specified). At Glen Echo Park. \$10 for the lesson and dance. \$5 for age 17 and under. (Age 17 and under free on second Fridays.) Info: FridayNight-Dance.org or the [Friday Night Dance at Glen Echo Park](https://www.facebook.com/FridayNightDanceGlenEcho) Facebook page.

April

- 6 **Chuck Abell** calls to the *Brooklyn Swing Ensemble* with **Danny Elias** (clarinet), **Sam Zygmuntowicz** (fiddle), **Bill Peek** (piano), and **Marco Brehm** (bass).
- 13 **Perry Shafran** calls to the *Glen Echo Open Band*.
- 20 **Dave Eisenstadter** calls to *Ari & Mia* with **Ari Friedman** (fiddle), **Mia Friedman** (cello), and **Owen Morrison** (guitar).
- 27 **Emily Abel** calls to *Chimney Swift* with **Cecile Leroy** (cello), **Daniel Raine** (cittern, guitar), **Zoë Madonna** (accordion), and **Yaron Shragai** (doubek, whistles).

GREENBELT FOLK DANCING • GREENBELT, MD

FRIDAYS • 8:30 PM

We focus on dance from Eastern Europe and Scandinavia. No partner or experience necessary. Beautiful dance floor. Teaching from 8:30 to 9:15 pm, requests from 9:15 on. At Greenbelt Community Center Dance Studio (wood floor). \$7/students and seniors half-price. Check website for special events. Info: **Larry Weiner**, 301-565-0539 or larry@larryweiner.com; or larryweiner.com/FridayDance.htm.

Saturdays

GALESVILLE COMMUNITY SQUARE DANCE

SATURDAY, APRIL 7 • 7–10 PM (DOOR, 5:45 PM)

Dance squares, circles, longway sets and waltzes. Appalachian dance tunes by **Leah Weiss** (fiddle) and **Gary Wright** (guitar). Figures called by **Janine Smith**. All ages welcome. Door, 5:45; optional potluck, 6; family-friendly dancing, 7; more challenging dancing, 8:30. At Galesville Memorial Hall, 952 Galesville Road, 20765 (near Annapolis). \$10; Kids 5–17, \$5. Info: communitysquaredance.wordpress.com/ or 301-926-9142.

NORWEGIAN POTLUCK AND DANCE • BETHESDA, MD

SATURDAY, APRIL 7 • POTLUCK, 6:30 PM; DANCING, 8 PM

(Also, see our website for annual Spring Springar Spree May 10–13.) Norwegian-style house party. Mesmerizing live music by **Loretta Kelley** on the unique Hardanger fiddle (w/ sympathetic strings under the bowed strings—see **HFAA**.)

org). Addictive dances, some with elements like swing or hambo. Beginners, singles/couples, watchers/listeners all welcome. Bring clean shoes to wear, food to share, and bucks you can spare. Hosts **Linda** and **Ross**, 202-333-2826. Info/directions: MAND.fanitull.org or **Jenny**, pi@xecu.net, 301-371-4312.

SHEPHERDSTOWN CONTRA DANCE

SHEPHERDSTOWN, WV

1ST SATURDAYS, APRIL 7 • 8 PM (FREE INTRO WORKSHOP AT 7:30)

Hilton Baxter calls to the *Boneshakers*: **Joe DeZarn** (fiddle), **Paul Hammerton** (guitar), **Gina Faber** (mandolin), and **Ralph Gordon** (bass). All levels welcome, no partners needed. Please wear clean, soft-soled shoes to protect the floor. Potluck snacks at the break. At the War Memorial Building, 102 E German St, 25443. \$12; under 12, \$5. Info: **John**, 301-542-3272 or smad.us.

ENGLISH COUNTRY DANCE • SILVER SPRING, MD

SATURDAY, APRIL 14 • 8–10:45 PM

Dance to music by *Peascods Gathering*, calling by **Bob Farrall**. Beginners and singles welcome. At Glen Haven Elementary School, 10900 Inwood Ave, 20902 (parking and entrance in rear). \$5. Info: **Carl Minkus**, 301-493-6281 or cminkus@verizon.net; or **Bob Farrall**, 301-577-5018.

ATDS CONTRA DANCE • ANNAPOLIS, MD

SATURDAY, APRIL 21 • 7–10 PM (FREE INTRO LESSON, 6:30)

A cavalcade of callers to the energetic music of the *Annapolis All-Starz*, our community big band. Special note: This dance is a FUN-raiser to help maintain our dance floor. All ages welcome. All dances taught and walked through. No experience or partner required. Snacks to share at the break are welcome. At Annapolis Friends Meeting Hall. \$10; discounts for seniors/students/families/ATDS members. Info: **Jan Scopel**, 443-540-0867, janscope@hotmail.com or **Charlotte Featherstone**, 203-247-3964, charlotte.featherstone@verizon.net, contradancers.com/atds.

ENGLISH COUNTRY DANCE • GREAT FALLS, VA

SATURDAY, APRIL 21 • 7:30–10:30 PM

The Leesburg Assembly. Join us for our monthly dance. **April Blum** calls to music by **Liz Donaldson** and **Becky Ross**. All dances taught and called. Please consider bringing a refreshment to share. At St. Francis Episcopal Church Hall, 9220 Georgetown Pike, 22066 (4.7 miles west of the Beltway). \$10; students, \$5. Info: **Laurel Bybell** (Secretary), lbybell@gmail.com or 703-791-5603; or theleesburgassembly.org.

LANCASTER CONTRA DANCE • LANCASTER, PA

SATURDAY, APRIL 21 • 7–10 PM (INTRO WORKSHOP, 6:15)

Bob Nicholson calls to *Squirrely Dan and the Eastern Rounders* with **Dan Levenson** (fiddle), **Emmy Truckenmiller** (fiddle), and **Annie Trimble** (guitar), and **Suzanne Gates** (bass). At St. John's Episcopal Church, 321 W. Chestnut St, 17603. \$9; students, \$6. Age 15 and under free. Info: **Karen**, 717-951-4317 or lancastercontra.org.

SCANDIA DC DANCE • GREENBELT, MD

SATURDAY, APRIL 21 • 7–10 PM

Scandia DC sponsors Scandinavian couple dancing on the 3rd Saturday of the month. This month live fiddle music will feature **Paul Carlson**, a talented fiddler who is passionate about Scandinavian fiddle music. He teaches and plays professionally and plays regularly for the Nordic dancers and at other venues, including the Kennedy Center. There may be some recorded music. No partner necessary. Teaching, 7–8: Polkettering, Hambo & Bakmes from Lillhärda, a beautiful Swedish dance, done to lovely music. At Green-

belt Community Center Dance Studio (wood floor). \$10; Info: **Linda Brooks** or **Ross Schipper**, 202-333-2826 or **Linda@ScandiaDC.org**; or **ScandiaDC.org**. Inclement weather, 301-474-0646.

FREDERICK CONTRA DANCE • FREDERICK, MD

SATURDAY, APRIL 28 • 8–11 PM (INTRO WORKSHOP, 7:15)

Shane Knudsen will call to TBA. Please refer to our website for updated information. Caller TBA. Snacks to share at the break are welcome. At Trinity School, 6040 New Design Rd, 21703. \$10; students: \$5. Info: **Boe Walker**, 301-694-6794 or **contradancers.com**.

Jams

See Frequent Venues for many location addresses on page 27.

Call to confirm first-Sunday events are happening this month due to the Easter holiday

Sundays

ACOUSTIC JAM • ANNAPOLIS, MD

SUNDAYS • 9:30–11:45 AM

Back room at 49 West Coffeehouse, 49 West St, 21401, Info: **ken.i.mayer@gmail.com**.

OLD-TIME JAM • RICHMOND, VA

SUNDAYS, 2–5 PM

Bluegrass/Old-Time stringed instruments only. Cary Street Café, 2631 West Cary St, 23220. Info/directions: **804-353-7445**.

BLUEGRASS JAM • HERNDON, VA

1ST & 3RD SUNDAYS, APRIL 1 & 15 • 1–4 PM

Held outdoors in summer months, in the Country Store in winter months. At the Schoolhouse, Frying Pan Park, 2709 W Ox Rd, 20171. Info/directions: **703-437-9101**.

DC BLUEGRASS UNION • WASHINGTON, DC

1ST SUNDAYS, APRIL 1 • 11 AM TO 2 PM (BLUEGRASS JAM)

3RD SUNDAYS, APRIL 15 • 11 AM TO 2 PM
(BLUEGRASS & COUNTRY JAM)

The Mansion, 2020 O St NW, 20036 (Dupont Circle Metro). Info: **Mike Marceau**, **mikemarceau@juno.com**.

OLD-TIME OPEN JAM • BRUNSWICK, MD

1ST & 3RD SUNDAYS, APRIL 1 & 15 • 3–6 PM

Old-time Appalachian music—bring your fiddle, banjo, guitar, etc. Open to all. Organized by Old Time Frederick. At Beans in the Belfry. Info: **oldtimefrederick.org**.

BLUEGRASS OPEN JAM • BRUNSWICK, MD

2ND & 4TH SUNDAYS, APRIL 8 & 22 • 3–6 PM

Beginners welcome. Feel free to join the group and enjoy lively homegrown music the way it was meant to be. Great for listening, too. At Beans in the Belfry. Info: **301-834-7178**.

CABOMA JAM • ARLINGTON, VA

2ND & 4TH SUNDAYS, APRIL 8 & 22 • 2–6 PM

Capital Area Bluegrass & Old-Time Music Association holds jams at Lyon Park Community Center, 414 N. Fillmore St (at Pershing Dr), 22201. Slow Jam, 2–3 pm; Regular Jam continues until 6 pm. Info: **Don**, 703-522-1696 or **caboma.org**.

CLASSIC COUNTRY & GOSPEL JAM • SILVER SPRING, MD

2ND SUNDAYS, APRIL 8 • 2–5 PM

The Sunday jam welcomes a wide range of musical abilities and acoustic instruments, as well as voice. Playlist, directions, info: **swopes123@aol.com**.

UKULELE JAM • RIVERDALE, MD

SUNDAY, APRIL 8 • 2–4 PM

(NOTE DATE ON 2ND SUNDAY THIS MONTH)

Playing music from many different genres; it's just plain fun! At Archie Edwards Blues Heritage Foundation (Barbershop). Free (donations accepted/encouraged). Info: **UkeJamAtArchieEdwards@gmail.com**.

Mondays

WOLF'S BLUES JAM • FALLS CHURCH, VA

MONDAYS • 8:30 PM

At JV's Restaurant. No cover.

DC BLUEGRASS UNION JAM • TAKOMA PARK, MD

1ST & 3RD MONDAYS, APRIL 2 & 16 • 7–10 PM

At Veterans of Foreign Wars Post 350, 6420 Orchard Ave, 20912 (corner of Orchard and 4th, just a few blocks from the intersection of New Hampshire and Eastern). Info: VFW Post 350, **301-270-8008** or **Barb Diederich** at **Barb@BarbDiederich.com**.

TOUCHED BY SONG GOSPEL JAM • HERNDON, VA

3RD MONDAYS, APRIL 16 • 7:30–9 PM

Acoustic circle jam. Share favorite gospel, hymns, or praise songs or just play along. Open to all ages and skill levels. Floris United Methodist Church, 13600 Frying Pan Rd, 20171. Info: **debbie@touchedbysongs.com** or **dcbu.org**.

Jams continued

Tuesdays

OLD-TIME JAM • BALTIMORE, MD

ALTERNATE TUESDAYS, APRIL 3 & 17 • 7-10:30 PM

Ken and Brad Kolodner lead the Baltimore Old-Time Jam at The Five and Dime Ale House, 901 West 36th St, 21211. Info: **KenandBrad.com** or **Baltimore Old Time Jam** Facebook page.

Wednesdays

BLUEGRASS MUSIC ALLIANCE JAM • MARTINSBURG, WV WEDNESDAYS • 6-9 PM

Musicians of all levels encouraged to come; bluegrass music fans are welcome to listen. At Martinsburg Moose Lodge, 201 Woodbury Ave, 25404, **bluegrassmusicalliance.org/local-area-jams/**.

OLD-TIME JAM • TAKOMA PARK, MD

THIRD WEDNESDAYS, APRIL 18 • 7:45-11 PM

Rachel Eddy and **Jonathan Vocke** are leading a monthly old-time jam. Come early and grab dinner. At Takoma BevCo, 6917 Laurel Ave, 20912. Join the Facebook group (**Takoma Park Old Time Jam**) to stay in touch.

CAJUN JAM • TAKOMA PARK, MD

4TH WEDNESDAYS, APRIL 25 • 7-9:30 PM

For dancers, musicians, and listeners who enjoy Cajun music. Beginners welcome. At Veterans of Foreign Wars Post 350, 6420 Orchard Ave, 20912 (corner of Orchard and 4th, just a few blocks from the intersection of New Hampshire and Eastern). Free. Info: **swopes123@aol.com**.

Thursdays

OPEN BLUEGRASS JAM • BRUNSWICK, MD

1ST THURSDAYS, APRIL 5 • 6:30-9 PM

Hosted by **Bobby Bales** and **Claude Jones**. **Bobby** is a legendary lead guitarist in the *Grassy Ridge Band*. All are welcome to join in. At Beans in the Belfry. Info: **301-834-7178**.

Saturdays

ARCHIE EDWARDS BLUES HERITAGE FOUNDATION

ACOUSTIC BLUES JAM • RIVERDALE, MD

SATURDAYS • 1-5 PM

Acoustic instruments, all levels; listeners also welcome. At Archie Edwards Blues Heritage Foundation (Archie's Barber-shop). Free, but donations welcome. Info: **301-396-3054** or **acousticblues.com**.

open mics

See Frequent Venues for many location addresses on page 27.

Mondays

TEAVOLVE CAFE • BALTIMORE, MD

MONDAYS • 7 PM

Open Mic Showcases hosted by **Rob Hinkal**. At Teavolve Cafe & Lounge, 1401 Aliceanna St, 21231. Info: **Rob Hinkal, 410-522-1907** or **facebook.com/teavolvecafe/**.

Tuesdays

GYPSY SALLY'S OPEN MIC • WASHINGTON, DC

MOST TUESDAYS • 8 PM

Upstairs in Vinyl Lounge. At Gypsy Sally's. Free. Info: **http://www.gypsysallys.com/listing/open-mic/**.

RESTON-HERNDON FOLK CLUB • HERNDON, VA

TUESDAYS • 7:15 PM (DOORS OPEN AT 6 PM)



Open mic format. At Amphora's Diner Deluxe. Info: **703-435-2402** or **RestonHerndonFolkClub.com**.

JV'S OPEN MIC • FALLS CHURCH, VA

1ST TUESDAYS, APRIL 3 • 8 PM

Hosted by **Crazy After Midnight**. At JV's Restaurant. Info: **703-241-9504**, **jvsrest@aol.com**, **703-216-0560**, or **avnocero@gmail.com**.

Thursdays

ACOUSTIC OPEN MIC • RIVERDALE, MD

1ST THURSDAYS, APRIL 5 • 7:30-10 PM

If you have a song or three to share with others, original or otherwise, stop in and show your stuff. Listeners also welcome. At Archie Edwards Blues Heritage Foundation (Barbershop). Info: **acousticblues.com/events/events.html**.

SONGWRITERS ASSOCIATION OF WASHINGTON

OPEN MICS • GREENBELT, MD

THURSDAYS, APRIL 5, 19, & 26 • 7 PM

Lynn Hollyfield (April 5), **Joe Harris** (April 19), and **Paige Powell** (April 26) host. At New Deal Cafe. No cover, donations encouraged.



Participatory Performing Groups

See Frequent Venues for many location addresses on page 27.

Sundays

MASON DIXON BORDER MORRIS • FREDERICK, MD SOME SUNDAYS • 12–2 PM

Possibly the oldest and most fictitious morris team in North America. Gender irrelevant, steampunk a plus. Practices usually twice a month. Location rotates between Fredrick, Ellicott City, Columbia, and Adelphi, somewhat randomly; weather- and space-dependent. Info/directions: blgraham_99@yahoo.com or [facebook.com/masondixonbordermorris](https://www.facebook.com/masondixonbordermorris).

Mondays

JOIN THE INDONESIAN EMBASSY GAMELAN ENSEMBLE MONDAY & THURSDAY EVENINGS

The Embassy of Indonesia offers a free program to learn and perform Javanese Gamelan music with an instructor from Indonesia, **Mr. Muryanto**. The Gamelan is an orchestra of gongs, gong-chimes, and xylophone-like instruments. Rehearsals are Monday and Thursday evenings. Come one or both days. No experience required. Contact **Marc Hoffman**, Indonesian-American Association, wildwoodflower@gmail.com or 202-271-2291.

Tuesdays

CAPITAL ACCORD CHORUS • SILVER SPRING, MD TUESDAYS • 7:30–10 PM

You are cordially invited to the Capital Accord Chorus Spring Concert, Sunday, April 8, 4 pm, at James Hubert Blake High School (see Concerts section). We are an all-women's a cappella group singing in the barbershop style. If you like what you hear, join us Tuesday evenings for free and open rehearsals. We meet at Northwood High School Chorus Room, 919 University Blvd W, 20901. Info: 1-301-392-SONG (7664), admin@capitalaccord.org, or capitalaccord.org.

Wednesdays

ROCK CREEK MORRIS WOMEN • SILVER SPRING, MD WEDNESDAYS • 7:30–9:30 PM

Come learn English traditional morris dancing and become part of a community that dances, sings, and socializes together. We love having new dancers join us at practice. At Takoma Park Middle School, 7611 Piney Branch Rd, 20910 (walkable from Takoma Metro; or catch the 14 from Takoma Metro and someone will get you back to a metro afterward). Info: RCMW@uswet.com, or uswet.com/RCMW.html.

WASHINGTON BALALAIKA SOCIETY ORCHESTRA ARLINGTON, VA WEDNESDAYS • 7:30–9:30 PM

We are seeking people who play (or want to learn) balalaika, domra, or bayan/accordion or who play some orchestral wind and percussion instruments to perform the music

of Russia, Ukraine, and Eastern Europe. At Faith Lutheran Church, 3313 Arlington Blvd, 22201. Info: balalaika.org or 703-549-0760. See ad for our spring concert, page 25.

Thursdays

CARPATHA FOLK DANCERS • WASHINGTON, DC THURSDAYS • 6:30–9 PM

Carpathia is Washington's multiethnic Eastern and Central European dance performance ensemble. We are currently looking for 3–4 new men and women who are interested in performing dances from a variety of countries including Ukraine, Poland, Romania, Germany, and Bulgaria. We rehearse in Foggy Bottom and have dancers from 16 years old to their mid-40s (we are open to any interested in fast-paced performance dance, age 14 and up). Costumes are provided by the ensemble. Info/directions: carpathiadc@gmail.com, carpathiadc.org, or [facebook.com/carpathiadc](https://www.facebook.com/carpathiadc).

FOGGY BOTTOM MORRIS MEN • TAKOMA, DC THURSDAYS • 8–10 PM

Experience the vigorous thrill of the morris and the camaraderie of a morris team. Learn and perform dances from English Cotswold villages, mummers' plays, and occasional long sword dances. We welcome new and slightly used dancers to our practices at Knock On Wood Tap Studio, 6925 Willow St NW, 20012, and/or at the pub afterward. Info: **Alan Peel**, 301-920-1912, squire@fbmm.org, or fbmm.org.

JOIN THE INDONESIAN EMBASSY GAMELAN ENSEMBLE MONDAY & THURSDAY EVENINGS

See listing under Mondays.

Fridays

GLEN ECHO OPEN BAND • GLEN ECHO, MD 2ND FRIDAYS, APRIL 13 • 8:30–11:30 PM

The fabulous *Glen Echo Open Band* plays for the second-Friday contra dance. All instruments and levels of ability welcome. Find recordings, tune book names, and page numbers of tunes played by the *Open Band* at OpenBandOnline.com (site works best using iTunes on a PC or Mac). At Glen Echo Park. Info: FridayNightDance.org.

Saturdays

WASHINGTON'S SPELMANSLAG • KENSINGTON, MD 2ND & 4TH SATURDAYS, APRIL 14 & 28 • 2:30–4:30 PM

Open rehearsals for a small orchestra playing traditional Swedish music. Info/directions: JuliaBorland3250@gmail.com.



sings

See Frequent Venues for many location addresses on page 27.



FSGW OPEN SING • TAKOMA PARK, MD FRIDAY, APRIL 6 • 8 PM

Topic: *Paying the Tax, Financial or Otherwise.*

This includes demanding and exhausting situations as well as money-grubbing authorities. Singers go around the room, giving everyone a chance to sing a song, play a tune, or pass. Most songs presented from memory, but cheat sheets often appear. The open sings have a loose topic. Don't worry if you can't think of a song on topic—come join the fun anyway! This month at **Kathie Mack's** Craftsman bungalow (very near Takoma metro). RSVP/Directions: **301-270-5367** or **kpmack2@gmail.com**. NOTE: If you're willing to host on a future first Friday, please email **Vince Wilding, Vince@VinceWilding.com**.



FSGW DOO-WOP SING • POTOMAC, MD SATURDAY, APRIL 7 • 6:30 PM (OPTIONAL POTLUCK, 5:30 PM)

Remember those classic harmonies from the early days of rock—from groups like the *Platters*, the *Clovers*, and the *Drifters*? Not to mention the great girl groups such as the *Shirelles*, the *Angels*, the *Crystals*, the *Dixie Cups*, etc. Come join us as we sing those wonderful songs from that era, such as: Under the Boardwalk; Good-night, Sweetheart; Goin' to the Chapel; My Boyfriend's Back; Earth Angel; Charlie Brown; Yakety-Yak; and so many more. Lyrics are provided for anyone who wants them. At the home of **Al Kehs** and **Lynn Blei**. RSVP/directions: **Ron Davies, 301-270-9365** or **rondavies7@icloud.com**.



FSGW: POTOMAC RIVER SHAPE NOTE SINGING CONVENTION • GREAT FALLS, VA SATURDAY & SUNDAY, APRIL 7 & 8 10 AM TO 3:30 PM

Join singers from across the country for two days of spirited, vibrant, unaccompanied singing at the 29th Annual Potomac River Shape Note Singing Convention. All are welcome, and no experience is necessary. At The Great Falls Grange, 9818 Georgetown Pike, 22066. The convention is free and open to the public. Free-will offering will be accepted to cover expenses. Info: Facebook, **DC Shape Note Singers; Matt Roberts**, Chair, **saotomesan@gmail.com**; or **dcshapenote.squarespace.com**. For more information about *The Sacred Harp*, *The Shenandoah Harmony*, or shape note singing, visit **fasola.org** or **shenandoahharmony.com**.



FSGW GOSPEL SING • BETHESDA, MD SUNDAY, APRIL 8 • 4-8 PM

Gospel sings are held the second Sunday of every month at various homes. Group singing starts at 4 pm and breaks for a covered dish supper at 6 pm, with more singing after supper until 8 pm. Everyone is welcome. This month's Gospel Sing will take place at the home of **Larry Cope**. Info/directions: **larry_cope@verizon.net** or **301-718-6564**.

FSGW SHAPE NOTE SINGING • WASHINGTON, DC 4TH SUNDAYS, APRIL 22 • 5-8 PM

Every 4th Sunday, sing from the rich traditions in *The Sacred Harp* (1991) and *Shenandoah Harmony*, with unaccompanied 4-part singing fueled by a 6:30 pm potluck supper. Loaner books available; newcomers and beginners welcome. At Capitol Hill Presbyterian Church 201 4th St. SE, 20003. Info: **Mary Helen, mary-helend@gmail.com**; or **Brenda, 202-599-0447** or **brendadunlap@gmail.com**.



FSGW-COSPONSORED: CIRCLE OF LIFE SONG CIRCLE ROCKVILLE, MD

1ST & 3RD TUESDAYS, APRIL 3 & 17 • 1-2:30 PM

Cosponsored by the Bender Jewish Community Center of Greater Washington and FSGW. Sing favorite songs and make new friends! The song circle is about the joy of singing. All are welcome, regardless of experience or level of ability. Words will be provided on song sheets—no need to read music. Come for informal singing or just to listen, but do come. Free; refreshments provided! At Bender Jewish Community Center of Greater Washington, 6125 Montrose Rd, 20852. Info or to volunteer: **Frieda Enoch, fenocho@jccgw.org** or **Fred Stollnitz, fstollnitz@comcast.net**.



FSGW-COSPONSORED: SCHWEINHAUT SONG CIRCLE • SILVER SPRING, MD THIRD WEDNESDAYS, APRIL 18 • 1-3 PM

This song circle provides a daytime opportunity to enjoy great songs, old or new, humorous or serious, timeless or topical. The Song Circle, cosponsored by FSGW and Carpe Diem Arts, is about the joy of singing, not about talent. No need to read music; printed words are provided for songs that have been suggested in advance, and you may lead or request any song, whether or not we have printed words. Everyone is welcome, regardless of age or experience, including instrumental accompanists.

Wendy Lanxner will be a song leader and accompanist. Come when you can and leave when you must, but do come to sing or just to listen. Free. At Margaret Schweinhaut Senior Center, 1000 Forest Glen Rd, 20901. For more information or to suggest songs in advance, email **Fred Stollnitz, fstollnitz@comcast.net**.

Sundays

FSGW GOSPEL SING • BETHESDA, MD

SUNDAY, APRIL 8 • 4-8 PM



See page 22.

FSGW POTOMAC RIVER SHAPE NOTE SINGING CONVENTION • GREAT FALLS, VA

SATURDAY & SUNDAY, APRIL 7 & 8 • 10 AM TO 3:30 PM



See listing, page 3 & 22.

FSGW SHAPE NOTE SINGING • WASHINGTON, DC

4TH SUNDAYS, APRIL 22 • 5-8 PM



See page 22.

SACRED HARP SINGING • SANDY SPRING, MD

3RD SUNDAYS, APRIL 15 • 4-6 PM

Singing followed by a potluck supper. Location is a small schoolhouse behind the Community Building, 17801 Meetinghouse Rd, 20860 (about 10 miles west of Laurel). Info: **Dave Greene, 301-570-3283** or dgreene@all-systems.com.

VIENNA/OAKTON SHAPE NOTE SINGING • OAKTON, VA

3RD SUNDAYS, APRIL 15 • 5-7:30 PM

Books: *Shenandoah Harmony* and *Sacred Harp* (1991 Denison edition). Bring a snack to share. Unitarian Universalist Congregation of Fairfax (Classroom 1), 2709 Hunter Mill Rd, 22124. Info: **John, 540-955-2660** or jdelre@visuallink.com or dcshapenote.squarespace.com.

Mondays

BALKAN SINGING • TAKOMA PARK, MD

MONDAYS • 8 PM

Informal singing group, *Sedenka*, meets to sing Balkan village songs. Interested novices welcome. Info/directions: **Katya, 301-270-4175** or Katya@partan.com.

Tuesdays

FSGW-COSPONSORED: CIRCLE OF LIFE SONG CIRCLE • ROCKVILLE, MD •

1ST & 3RD TUESDAYS, APRIL 3 & 17 • 1 TO 2:30 P.M. •



See page 22.



sings continued

DC SHAPE NOTE SINGING • WASHINGTON, DC

3RD TUESDAYS, APRIL 17 • 7-9:30 PM

We sing from both *Sacred Harp* and *Shenandoah Harmony*. Loaner book available and books for sale. Everyone welcome to bring snacks and friends. Capitol Hill Presbyterian Church, 201 4th St SE, 20003 (Enter side door, left of the main steps. Street parking possible; 10 minutes from Capitol South and Eastern Market Metros; 20 minutes from Union Station). Info: **Brenda Dunlap, 202-425-5264** or dcshape-note.squarespace.com.

Wednesdays

FSGW-COSPONSORED: SCHWEINHAUT SONG CIRCLE • SILVER SPRING, MD

THIRD WEDNESDAYS, APRIL 18 • 1-3 PM



See page 22.

SEA CHANTEY OPEN PUB SING

2ND (BALTIMORE) AND 4TH (DC) WEDNESDAYS • 8-10 PM

The Ship's Company chanteymen host open mic chantey sings. Participation encouraged but not mandatory. Requests honored if possible. Info: **Myron Peterson, ructic@yahoo.com** or ShipsCompany.org.

April

11 Wharf Rat, 801 S Anne St (Fell's Pt), Baltimore, MD 21231

25 Mackey's, 1306 G St NW (near Metro Center), Washington, DC 20005

Thursdays

SEA CHANTEY OPEN PUB SING • TYSONS CORNER, VA

2ND THURSDAYS, APRIL 12 • 8-10 PM

The Ship's Company chanteymen host open mic chantey sings. No cover or minimum; arrive early for a table. Participation encouraged but not mandatory. Requests honored if possible. Mostly *a cappella* but instruments welcome. At Paddy Barry's Irish Pub and Restaurant, 8150 Leesburg Pike, 22182 (Rte 7 near 123; half-mile walk from Tysons Corner or Greensboro Metros). Info: **Myron Peterson, ructic@yahoo.com** or ShipsCompany.org.

FOLKSONG SING-IN (OPEN FOLK SING) • WHEATON, MD

3RD THURSDAYS, APRIL 19 • 8-10 PM

Join local musician **John Durant, Jr.**, every month for this musical gathering. Everyone gets a chance to lead the room in song. Bring your favorite folk tunes, your voice, and even your instruments for a great evening of song and pub-style fellowship. At The Limerick Pub, 11301 Elkin St, 20902 (corner of Elkin & Price). Venue info: thelimerickpub.net.

Fridays

FSGW OPEN SING • TAKOMA PARK, MD

FRIDAY, APRIL 6 • 8 PM



See listing, page 22.

sings continued

Saturdays

FSGW DOO-WOP SING • POTOMAC, MD

SATURDAY, APRIL 7 • 6:30 PM

(OPTIONAL POTLUCK, 5:30 PM)



See listing, page 22.

FSGW POTOMAC RIVER SHAPE NOTE
SINGING CONVENTION • GREAT FALLS, VA

SATURDAY & SUNDAY, APRIL 7 & 8 • 10 AM TO 3:30 PM



See listing, page 3 and 22.

SHAPE NOTE SINGING • BOYCE, VA

1ST SATURDAYS, APRIL 7 • 4-8 PM

All are welcome to sing from *Shenandoah Harmony* and *Sacred Harp*. Potluck dinner at 6 pm. Locations vary. Info/address: **Kelly** or **John**, jdelre@visuallink.com or **540-336-8112**; **Northern Shenandoah Valley** Facebook page; or dcshapenote.squarespace.com/nsv/.

A LETTER FROM FSGW'S PRESIDENT

Dear Members,

I have spent quite a few hours going through FSGW's database and have had the pleasure of talking with many of you. Others have received a phone message or email (or both) from me. If you have not yet responded to my voice mail or email, please do so. A few reminders:

Only two membership types will be available: Individual annual and Individual lifetime. For current Family memberships, adults will be migrated as Individuals; data for dependent children will not be migrated. Your current expiration date will be preserved. For current Family Lifetime memberships, two adults will be migrated; each will have a separate Individual Lifetime membership.

If you wish to log in to the members-only area (which will include the directory, and which may allow you to upload a photo), you must have a unique email. Shared emails, which were permitted under the old system, are not permitted under the new system. Many of you have already provided an additional email. If you have not done so, there are numerous free email services.

To cut the substantial costs of mailing paper ballots, this year all members who have an email in the system will receive an electronic ballot. Because each email is unique, and only one vote is permitted from each email, there is no need for special (expensive) paper and the creation of two ballot types (family and individual). Members without an email will receive paper ballots.

Thank you for your patience and cooperation.

Questions? Email me at President@FSGW.org, and I'll do my best to answer them.

April Blum, President

THE BEATLES SINGALONG • LEESBURG, VA

2ND SATURDAYS, APRIL 14 • 7-9:30 PM

Come sing and play along with the great music of *The Beatles*. We start the evening singing an album. This month it is: *Beatles For Sale*. All levels of musicianship are welcome. Acoustic and electric guitars OK. **Lawrence Brand** leads the singing. Songbooks are provided. United Methodist Church, 107 W Market St, 20176 (Plenty of free parking). Free. Info/RSVPs/directions: **Lawrence Brand**, **301-639-7608**, Lawrence@RLBrand.com, or meetup.com/The-Beatles-Sing-Along.

WASHINGTON REVELS—CARPE DIEM

COMMUNITY SING • SILVER SPRING, MD

SATURDAY, APRIL 21 • 7-8:30 PM

Join us in celebrating diverse cultures through song the 21st of every month. Welcoming all ages. Bring songs and refreshments to share. Celebration of Earth Day and Arab American Heritage Month. Featuring special guests **Fuad Foty and Family**. NEW LOCATION: Seekers Church. Info: **Busy Graham**, BusyGraham@gmail.com or **301-466-0183** or **Jo Rasi**, jrsi@revelsdc.org or **301-587-3835**; revelsdc.org/shows-events/community-sings/; or carpediemarts.org/sing-with-us.

Storytelling



FSGW STORYSWAP • WASHINGTON, DC

SATURDAY, APRIL 21 • 7:30 PM

Storytellers and listeners are invited to the home of **Cricket Parmalee** for an evening of shared stories and potluck snacks. Free. RSVP/directions: **Cricket**, cricket1415@yahoo.com.

FSGW COSPONSORED: THE GRAPEVINE
TAKOMA, DC

SECOND WEDNESDAYS, APRIL 11 • 7:30-9:30 PM

The Grapevine is home for first-rate storytelling and storytellers of all styles. "The Oral Tradition: Fable, Fact, and Fiction," hosted by **Renée Brachfeld**, with featured tellers **Charlotte Blake Alston** and Judith **Heineman**. The program opens with up to three open-mic tellers with a 5-minute limit (each). Busboys and Poets, 235 Carroll St NW, 20012. Food and drink available. Suggested donation of \$15 per person goes to the featured tellers—feel free to donate more! "Like" The Grapevine on Facebook at [GrapevineStorytelling](https://www.facebook.com/GrapevineStorytelling). Details: grapevinetakoma@gmail.com.

REVELS WORLD STORY TIME • SILVER SPRING, MD

TUESDAYS, APRIL 3-24 • 10:30-11:30 AM

Bring your kids and join us as we explore the magical, diverse world of children's literature. We'll journey through books old and new, from different countries and unique cultures; all delightful for kids of any age (but aimed at the 3-7-year-old set)! At Washington Revels Studio Space. Free (donations welcome). Info: **Jo Rasi**, **301-587-3835** or jrsi@revelsdc.org; revelsdc.org/revels-kids/revels-world-story-time/.



Upcoming events are subject to change; please check fsgw.org for updates, further details, additional event listings, and links to performers' audio samples and websites. Please note that more upcoming events than appear in the newsletter may be listed on the website.

Concerts

ALEXANDRIA AFTER WORK CONCERT SERIES IS BACK!

On hiatus since the closure of Emma's Espresso in Del Ray, our monthly concert series in Alexandria is back in a more convenient location and in an exciting new partnership with the City of Alexandria! Starting in May, FSGW and the Office of Historic Alexandria will present a concert on the **second Friday of the month, 6–8 pm**, at one of the historic houses in the heart of Old Town on the free trolley line from King Street Metro station. There will be beer and wine vendors, possibly food trucks (we're still working on some of the details), and great music with a \$15 suggested donation. No tickets needed, just show up! Concerts will be held indoors or outdoors depending on the weather, sometimes at Lloyd House at 220 North Washington Street and sometimes at Murray-Dick-Fawcett House at 517 Prince Street. (The series will take a break in December.) The lineup so far:

Friday, May 11: Michael & Paty Sevenser at Murray-Dick-Fawcett House

Friday, June 8: Cigar Box String Band at Murray-Dick-Fawcett House

Friday, July 13: Ship's Company Chanteymen at Lloyd House

Friday, August 10: TBA

Friday, Sept 14: After the Flood at Murray-Dick-Fawcett House

Friday, Oct 12: The Natterjacks at Murray-Dick-Fawcett House

Friday, Nov 9: Cold Chocolate at Lloyd House

Other Upcoming FSGW Concerts

(all subject to change—check fsgw.org for updates)

Saturday, May 5: Tret Fure

Thursday, June 7: Night Tree

Friday, June 22: Martin Grosswendt &

Susanne Salem-Schatz

Friday, July 20: Jeff & Gerret Warner

Saturday, Aug 11: Mari Black World Fiddle

Ensemble

Friday, Sept 21: Bua

Saturday, Sept 29: Jez Lowe & James Keelaghan

Friday, Oct 5: Matthew Byrne

Friday, Oct 19: Ronn McFarlane

Saturday, Oct 20: Sarah McQuaid

Sunday, Oct 21: Joe Penland

Friday, Oct 26: Colebrook Road

Sunday, Nov 4: Nordic Fiddlers Bloc

Washington Balalaika Society
Orchestra Concert

Oh My Stars!

showcasing our own array of stars

55 members on stage with balalaikas, domras, and other Russian folk instruments



Svetlana Nikonova
conductor

Andrei Saveliev
balalaika

Peter Omelchenko
domra

Evgenia Tochenaya
domra

and other bright stars from our musical family

Saturday
June 2, 8 pm
Fitzgerald Theatre
Rockville, Maryland

Sunday
June 3, 3 pm
Wakefield High School
Arlington, Virginia

For tickets and more information visit:
www.balalaika.org

Festivals and Weekends

38TH WASHINGTON FOLK FESTIVAL • GLEN ECHO PARK, MD SATURDAY & SUNDAY, JUNE 2 & 3 (12–7 PM BOTH DAYS)

The 38th Annual Washington Folk Festival showcases the diversity of traditional music in the Washington area. All musicians, storytellers, dancers, and craftspeople live in the greater Washington metropolitan area and volunteer their talents to put on a first-class festival of national renown. With performances representing cultures from around the world as well as around the country, it is your chance to find out what is going on in the folk communities of the area. Info: fsgw.org.

DARE TO BE SQUARE—DMV • PRINCE WILLIAM FOREST PARK, VA FRIDAY—SUNDAY, JUNE 8–10

The DC Square Dance Collective and our friends at the Baltimore Square Dance are organizing the second Dare to Be Square, a fun, affordable, weekend-long gathering and getaway where you can explore all things square dance and old-time. We'll be at the beautiful Prince William Forest Park in Virginia, a mere 40 minutes south of DC. The weekend will feature workshops where you can learn to call your first dance, hone your calling skills, enjoy instrument and singing sessions, and clogging/ flatfooting sessions, with oodles of opportunities to jam and just hang out. Oh, and stellar evening dances! Best of all, it's super affordable: \$55 before April 30 for the whole weekend (food and lodging included). Info: dcsquaredance.com.

HASHDANCE WEEKEND: TICKETS GO ON SALE MARCH 1! FRIDAY—SUNDAY, JULY 13–15

Details about this one-of-a-kind weekend of Hash calling—no walk-throughs, ultra-challenging, contras, squares, and other formations that will challenge you to your core. A wonderful once-off weekend of dancer fever dreams! Featuring **Barefoot** (Edward Howe, fiddle and Jamie Oshima, feet, piano, guitar, straw) and **The Ripples** (Kristen Planeaux, piano, vocals; Gabrielle Lanza, percussion, vocals; Andrew Taylor, fiddle; and Christopher Wood, guitar, strings). See updates on Facebook (search "hashdance weekend"), including pricing, housing, schedules, and registration as plans develop. Info: hashdanceweekend@gmail.com.

other upcoming events

ROBINWOOD GUITAR RETREAT • SHARPSBURG, MD THURSDAY—MONDAY, MAY 10–14

Award-winning guitar master Robin Bullock presents his long-awaited and much-requested guitar retreat in the beautiful hills of Sharpsburg, Maryland. Three full days of hands-on workshops, master classes, performance opportunities, jamming, and immersion in all things acoustic guitar. Registration now open. Info: robinbullock.com/robinwood; Karen Kaye, 301-641-1837; or robin@robinbullock.com.

AMERICAN BANJO FRATERNITY MEETING • NEWARK, NY THURSDAY—SATURDAY, MAY 24–26

Banjo players and listeners are invited. If you are a music professional, an amateur musician, or interested in banjo and music history, you will find worthwhile music that will challenge your skills and expand your repertoire. Not bluegrass or clawhammer, most of the music dates from 1880 to 1920. It is played on nylon strings with bare fingers and no picks. At the Newark Garden Hotel, 125 N Main St, 14513 (315-331-9500). We welcome guests without charge except for food and lodging. If you wish to attend, please let us know. If you wish to join the ABF, please contact the secretary, Joel Hooks, for an application and dues payment, joelhooks@me.com. Please check our website for updates, banjofraternity.org.

ROOSTER WALK 10 • MARTINSVILLE, VA THURSDAY—SUNDAY, MAY 24–27

Headlining bands include **The Wood Brothers**, **JJ Grey & Mofro**, and **Robert Randolph and the Family Band**. At Pop's Farm in Martinsville, VA. Tickets/info/full lineup: RoosterWalk.com.

33RD ANNUAL BFMS SPRING CATOCTIN MOUNTAIN MUSIC AND DANCE WEEKEND • THURMONT, MD FRIDAY—SUNDAY, JUNE 15–17

Join dancers and musicians of all ages for a participatory intergenerational weekend of dancing, singing, workshops, jamming, crafts, hiking and more in a beautiful mountain setting from \$89 per person. Info: **Elisabeth Epstein**, 703-272-8197, or catocin@bfms.org. Online registration: bfms.org/catocin.php.

6TH ANNUAL RED WING ROOTS MUSIC FESTIVAL MOUNT SOLON, VA FRIDAY—SUNDAY, JULY 13–15 At Natural Chimneys Park. Info: redwingroots.com/media/.

frequent venues

Allyworld, 7014 Westmoreland Ave, Takoma Park, MD 20912 (Takoma Radio entrance)

AMP by Strathmore, 11810 Grand Park Ave, North Bethesda, MD 20852, ampbystrathmore.com (Strathmore members receive admission discounts)

Amphora's Diner Deluxe, 1151 Elden St, Herndon, VA, 20170, **703-435-2402; restonherndonfolkclub.com**.

Annapolis Friends Meeting Hall, 351 Dubois Rd, Annapolis, MD 21401

Archie Edwards Blues Heritage Foundation (Archie's Barbershop), 4701 Queensbury Rd, 20737 (across from Riverdale MARC train station; ample parking). Info: acousticblues.com or events@acousticblues.com

Baldwin's Station, 7618 Main St, Sykesville, MD 21784. Shows 8 pm. Info: uptownconcerts.org, **410-795-1041**.

Ballroom Blum, Adelphi, MD. Info/directions: **301-422-0292** or jerryandapril@aol.com

Beans in the Belfry Meeting Place and Café, 122 W Potomac St, Brunswick, MD 21716.

Birchmere Concert Hall, 3701 Mt. Vernon Ave, Alexandria, VA 22304 (all shows 7:30 pm), birchmere.com, **703-549-7500**

BlackRock Center for the Arts, 12901 Town Commons Dr, Germantown, MD 20874 (Ride-On bus routes 97 & 100), blackrockcenter.org.

The Cellar Stage has a new home at the Timonium United Methodist Church, 2300 Pot Spring Rd, Timonium, MD 21093. all shows 8 pm; uptownconcerts.org

Cherry Hill Park Conference Center Ballroom, 9800 Cherry Hill Rd, College Park, MD 20740.

Electric Maid Community Exchange, 268 Carroll St NW, Washington, DC 20012 (Takoma Metro), electricmaid.org.

Glen Echo Park, 7300 MacArthur Blvd, Glen Echo, MD 20812

Glen Echo Town Hall, 6106 Harvard St, Glen Echo, MD 20812

Greenbelt Community Center, 15 Crescent Rd, Greenbelt, MD 20770

Gypsy Sally's, 3401 K St, NW, Washington, DC 20007, gypsysallys.com.

The Hamilton, 600 14th St NW (at F), Washington, DC 20005, thehamiltondc.com

Holy Cross Lutheran Church, 1090 Sterling Rd, Herndon, VA 20170, holycrosslutheranchurch.net

Jammin' Java, 227 Maple Ave E, Vienna, VA 22180, jamminjava.com

Janie Meneely's, Takoma Park, MD. Info/directions: program@fsgw.org.

JV's Restaurant, 6666 Arlington Blvd, Falls Church, VA 22042,

jvsrestaurant.com.

Lyceum, 201 S. Washington St, Alexandria, VA 22314. Info: **703-838-4994**.

Mad City Coffee, 10801 Hickory Ridge Rd, Columbia, MD 21044, 410-964-8671, madcitycoffee.com.

New Deal Café, 113 Centerway, Roosevelt Center, Greenbelt, MD 20770, newdealcafe.com.

Pearl Street Warehouse, 33 Pearl St SW, Washington, DC 20024. Info: pearlstreetwarehouse.com.

Positano Ristorante Italiano, 4948 Fairmont Ave, Bethesda, MD 20814.

Potter's Violins, 7111 Eastern Ave, Takoma Park, MD 20912 (old Blair Mansion) pottersviolins.com.

Rams Head Onstage, 33 West St, Annapolis, MD 21401 ramsheadonstage.com

St. Mark's on the Hill, 1620 Reisterstown Rd, Pikesville, MD 21208

Saint Mark Presbyterian Church, 10701 Old Georgetown Rd, Rockville, MD 20852.

Saint Stephen's Episcopal Church, 1525 Newton St. NW, Washington, DC 20010 (near the Columbia Heights Metro)

School of Musical Traditions, 1097 Rockville Pike, Rockville, MD 20852.

Seekers Church, 276 Carroll St NW, Washington (Takoma), DC 20012 (Takoma Metro)

Silver Spring Civic Building, One Veterans Plaza, Silver Spring, MD 20910 (free parking in garage across the street at 801 Ellsworth Dr after 7 pm and on weekends)

Strathmore Mansion, 10701 Rockville Pike, North Bethesda, MD 20852. Info: strathmore.org.

Strathmore Music Center, 5301 Tuckerman Ln, North Bethesda, MD 20852. Info: strathmore.org.

Takoma Park Middle School, 7611 Piney Branch Rd, Silver Spring, MD 20910

Unitarian Universalist Church of Arlington, 4444 Arlington Blvd, Arlington, VA 22204

Warner Theatre, 513 18th St NW, Washington, DC, 20004, warnertheatredc.com

Washington Revels studio space, 531 Dale Dr, Silver Spring, MD 20910, revelsdc.org

Weinberg Center for the Arts, 20 W. Patrick St., Frederick, MD 21701, weinbergcenter.org

Wolf Trap, The Barns, 1635 Trap Rd, Vienna, VA, 22182, wolftrap.org

SUPPORT FOLK MUSIC ON YOUR LOCAL COMMUNITY RADIO STATIONS!

Saturday nights listen to **Mary Cliff's Traditions** (Washington's longest-running radio show devoted to folk music) from 9 pm to midnight on WERA-FM Arlington (96.7 FM or streaming at wera.fm). FSGW congratulates **Mary Cliff** on her induction into the **Folk DJ Hall of Fame** at the recent **Folk Alliance Conference** in Kansas City.



And tune in to WOWD-LP Takoma Park (94.3 FM or streaming at takomradio.org); many shows of interest to blues, folk, reggae, and other traditional music enthusiasts. Full schedule/show descriptions at takomradio.org.





P.O. Box 323
Cabin John, MD 20818

PRESORTED
FIRST CLASS MAIL
US POSTAGE PAID
SUBURBAN, MD
PERMIT #4297

www.fsgw.org

Printed on recycled paper.

Address Service Requested

FIRST CLASS

The Folklore Society of Greater Washington is a not-for-profit [Section 501(c)(3) of the IRS code] institution, and we encourage the financial contributions of our members. Contributions in excess of annual dues are welcome and may be tax-deductible. Please mail your gift to FSGW, P.O. Box 323, Cabin John, MD 20818. Subscriptions to the Newsletter are available only outside the Greater Washington Metro area.

FSGW IS DEDICATED TO PRESERVING AND PROMOTING TRADITIONAL FOLK ARTS IN THE WASHINGTON, D.C., METROPOLITAN AREA. MEMBERSHIP IS OPEN TO ALL WHO SUPPORT THESE GOALS UPON PAYMENT OF DUES.

FSGW Membership Form

New Membership Renewal Change of Address

TYPE

- Individual One-Year Membership \$25.00
- Individual Lifetime Membership \$500.00

NEWSLETTER PAPER SUBSCRIPTION:

- I have chosen an Individual One-Year Membership
 - Please mail me a paper copy of the FSGW Newsletter, \$15.00 annual fee.
 - I will read the online version of the FSGW Newsletter and do not want a paper copy mailed to me.
- I have chosen an Individual Lifetime Membership
 - Please mail me a paper copy of the FSGW Newsletter at no additional cost.
 - I will read the online version of the FSGW Newsletter and do not want a paper copy mailed to me.

Each Member must submit a separate form

Name: _____

Street _____

City _____ State _____ Zip _____

Email: _____@_____

Preferred Phone: _____ - _____ - _____

Mobile Phone: _____ - _____ - _____

Directory Listing: We will list your name in our Membership Directory (*visible only to FSGW Members who are logged into the FSGW website*). May we also list the above information?

- Yes
- Yes, but do not list my:
 - Address Preferred Phone
 - Email Mobile Phone



Send form and check made payable to FSGW to:
FSGW Membership • FSGW, c/o M. Burnett, 10001 Boreland Ct., Bristow, VA 20136