



# The Folklore Society

## of Greater Washington ♦ NEWSLETTER

Vol. 40 No. 1

♦ [www.fsgw.org](http://www.fsgw.org) ♦ Hotline: 202.546.2228 ♦

SEPTEMBER 2003

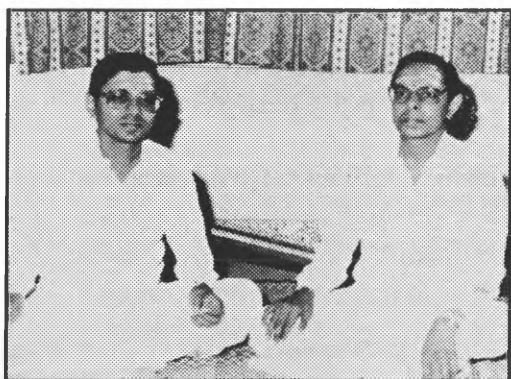
*Special Event Concert*

*Glen Echo, MD*

# Rudrapatnam Brothers

*Traditional South Indian Singers*

**Tuesday, September 23 • 8pm**



Sri. R.N. Thyagarajan and Dr. R.N. Tharanathan, popularly known as the **Rudrapatnam Brothers**, hail from a reputed family of South Indian musicians. Among vocal duos, the Rudrapatnam Brothers distinguished themselves especially for the exquisite blending of their voices.

They have been reviewed as “worthy torch bearers of the Alattor style of duet singing and worthy harbingers of the **Ramnad**

**Krishnan** way of generating flashes in the concert.” They have earned a wide reputation amongst musicians, music lovers and critics all over the world for their rich erudition, mellifluous performance, as well as their strict adherence to traditional values in Carnatic Music. They describe themselves as “traditionalists to the core.”

The singers will be accompanied by **Mysore V. Srikanth** on violin and by **Dr. P. K. Swaminathan** on *mrudangam* (South Indian percussion), both highly sought after artists in their own right.

Swaminathan currently runs the Sri Umayalpuram K. Sivaraman School of Mrudangam in Maryland.

At Glen Echo Town Hall, Glen Echo, MD FSGW members \$10/ general public \$12. Info: Betsy Platt at 301.320.7099 or [special@fsgw.org](mailto:special@fsgw.org)



## Inside:

<b>FSGW:</b>	
Advance Notices	13
Board Members/Meeting	23
Community Dance	2
Editorial Policy	23
English Country Dances	4
<b>FSGW FREE program: Saturday, September 20</b>	
<b>NEXTRADITION</b>	3
<b>FSGW House Concert: Friday, September 12</b>	
<b>BILL &amp; LIBBY HICKS</b>	7
<b>GETAWAY</b>	5
<b>GETAWAY REGISTRATION FORM</b>	6
International Dance	4
Sings	7
Storytellers	5
Sunday Night Dances	7
35 Years Ago This Month	22
<b>Features:</b>	
Calendar	12-13
Classifieds	23
Concerts & Concert Series	8
Dances	16
Dance Classes	20
Directions to Venues	14
Jams/Open Mics/Audience Participation	9
Local Folkal	11
Workshops, Weekends, Festivals	10

**39th Annual Getaway**  
**Friday October 17, 2003 through**  
**Monday October 20, 2003**

Camp Ramblewood, Darlington, MD  
 (near Havre de Grace)

For nearly four decades, FSGW has held its  
 Getaway weekend so members and friends  
 can share music, stories, crafts

**FSGW Sunday Night Dance****Glen Echo, MD**

# FSGW Sunday Night Contra Dance

## Sundays • 7:30 to 10:30 pm

Spanish Ballroom at Glen Echo Park (Directions, page 14). FSGW, in cooperation with the National Park Service, Montgomery County, and the Glen Echo Park Partnership for Arts & Culture, presents contras and squares danced to live music by fabulous bands with awesome callers. Experienced and new dancers welcome; no partner needed. New dancers please come early, as dances become more challenging later in the evening. **Admission \$7 for FSGW, BFMS, CDSS, and ATDS Members; \$9 for Non-Members.** Dress for warm weather and bring something to drink (no alcohol is permitted in the Park). If you use scented products, such as perfumes, please be considerate of those with allergies and use a gentle hand. **Info: Janine Smith at [dance@fsgw.org](mailto:dance@fsgw.org) or check the webpage at [www.fsgw.org](http://www.fsgw.org).**

**September**

- 7 **Company of Callers III** (four different callers, coordinated by **Ann Fallon**) with music by **Andrea Hoag** (fiddle) and **Charlie Pilzer** (piano). CDs available. You can learn more about Andrea at <http://users.erols.com/s526/Andrea.html> and Charlie at <http://www.air-showmastering.com/frame.html>.
- 14 **Liz Donaldson** calls, music TBA. Tune books and CDs will be available. Visit Liz's web page at <http://lizdonaldson.com/>.
- 21 Straight from Buffalo Gap! **Bill Olson** calls with **FootLoose: Michael Pilgrim** (fiddle), **David DiGiuseppe** (accordion), **Pete Campbell** (piano), and **Jim Roberts** (percussion). Music books and CDs will be available. You can find out more about FootLoose at <http://www.mindspring.com/~daviddg/3fl.html>.
- 28 **Ted Crane** travels down from New York to call with the **Corn Dogs: Beverly Smith** (fiddle), **Rafe Stefanini** (fiddle, banjo), **Erica Weiss** (guitar), and **Bob Taylor** (bass). CDs available. You can find out more about Ted at <http://www.tedcrane.com/Default.html>, Beverly at <http://www.smithnjones.net/index.html>, and Rafe at <http://www.rafestefanini.com>.

**October**

- 5 Caller TBA, music by **Taylor Among the Devils: Steve Hickman** or **Alexander Mitchell** (fiddle), **Marty Taylor** (flute/concertina), and **Jonathan Jensen** (piano).

**FSGW Community/Family Dance****Glen Echo, MD**

# FSGW Community/Family Dance

## Sunday, September 14 • 3:30-5:00 pm

The family dance program begins its new season with some special treats. **Robbin Schaffer** calls to the music of **Marimba Madness** (**Andrea Hoag** - fiddle and **Jac Lyman**-marimba and fiddle). Bring the whole family! Tell your friends and neighbors, girl or boy scout troop, church/synagogue or community group. A great opportunity to dance with your kids. Please bring a snack to share at the break. **Glen Echo Town Hall, 6106 Harvard Ave., Glen Echo, MD. Admission: \$5 age 4 & up. \$18 family max.** Cosponsored by FSGW and the World Music and Dance Institute. For more info, call **Bob Mathis** and **Tali Stopak** at 301.589.7539 or [www.eefc.org](http://www.eefc.org) or [www.dancingplanetproductions.com](http://www.dancingplanetproductions.com)





# FSGW Treasurer Needed!!!

FSGW is searching for a volunteer willing to serve on the Board as FSGW Treasurer. The Treasurer is Vice-Chair of the Board and is one of the four Corporate Officers of the Society, with authority to sign official documents and checks. The Treasurer must be 21 years of age, and a member of FSGW in good standing. The Treasurer handles all aspects of FSGW's finances—budget planning, collecting and disbursing funds, and keeping records—and works with the Society's bookkeeper to assure that budgets are prepared, tax returns are filed, performer wage statements are sent, and bank/investment accounts are maintained. The job requires about 10 hours per week, and a familiarity with generally accepted accounting principles. The Treasurer serves on the Board as Past Treasurer for one year following his/her term of office. **If you can serve FSGW in this important capacity (or know of someone who might be interested), please contact Anne Sergeant ([president@fsgw.org](mailto:president@fsgw.org)) or Kathy Westra ([vicepresident@fsgw.org](mailto:vicepresident@fsgw.org)).**

**FSGW Monthly Free Program**

**Washington, DC**



## The NexTradition

**Ken Schatz  
& Alison Kelley**

*Traditional Music in Motion*

**Saturday, September 20 • 8 PM**

Born in June of 1997 at the Mystic Sea Music Festival in Mystic, Connecticut, ***The NexTradition*** was christened by **Heather Wood** (of ***The Young Tradition***) on the back of a beer menu a few months later.

**Alison Kelley** and **Ken Schatz** both grew up with folk music—Alison in New York City, Ken in the DC area with FSGW (his mother is **Nancy King**). Together, as ***The NexTradition***, they perform sea songs and chanteys, gospel and blues, work songs of the railroads, mines, prisons, factories, and fields—the traditional music of the US, Great Britain, and the world.

Alison teaches at The Cobble Hill High School of American Studies, serves on the Board of Pinewoods Folk Music Society of New York, and also performs with **Ida Red**, ***The Johnson Girls***, and ***The New York Packet***. Ken acts, directs, teaches, and coaches acting for theatre, television, and film. Together as ***The NexTradition***, they have performed at folk festivals and for folk clubs across the US and in Europe.

At the Washington Ethical Society, 7750 16th Street, NW, Washington, DC. A current update on any parking and driving restrictions due to the reconstruction of 16th Street is available on the FSGW website—[www.fsgw.org](http://www.fsgw.org).

**FSGW Members FREE; Non-Members \$15, or join at the door.** For further details, see the FSGW website at [www.fsgw.org](http://www.fsgw.org), or call the FSGW hotline at 202-546-2228. If that doesn't answer your questions, you can contact **Charlie Baum** at 301-587-2286.

**FSGW English Country Dance****Glen Echo Town Hall, MD**

# FSGW English Country Dances

## Wednesdays • 8 to 10:30 pm

Dance on a wood floor in the climate-controlled community room of the Glen Echo Town Hall (Directions, page 14). Bring clean, non-scuffing shoes for dancing. Talented callers are accompanied by top-notch musicians playing a delightful mix of instruments, including piano, fiddle, flute, harp, oboe, concertina, bassoon, and viola. Enjoy the welcoming crowd and light refreshments. Experienced and new dancers welcome, no partner needed.

**Admission \$6 for FSGW members, \$8 for Non-members. Info: Norm Bernhardt at 301.320.2469; Stephanie Smith at 301.229.3577, or**

**Roger Broseus at English@fsgw.org.**

**September**

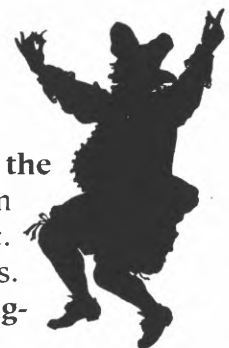
- 3 **Stephanie Smith** calls to the music of **David Knight** (fiddle), **Julie Gorka** (piano), and **Harriet Kaplan** (cello)
- 10 **Bob Farrall** calls to the music of **Kendall Rogers** (piano), **Colleen Reed** (flute), and **Marty Taylor** (concertina and recorders).
- 17 **Tom Spilsbury** calls to the music of **Liz Donaldson** (piano), **Barbara Heitz** (flute), and **Howard Markham** (concertina).
- 24 **Barbara Harding** calls to the music of **Bruce Edwards** (bassoon and concertina), **Becky Ross** (fiddle), and **Liz Donaldson** (piano).

**FSGW Co-Sponsored International Dance****Glen Echo, MD**

# Glen Echo International Folkdancers

## Thursdays • 7:30 to 10:45 pm

The Glen Echo International Folkdancers meet Thursday nights at the **Church of the Redeemer, 6201 Dunrobbin Drive** (next to the shopping center across the street from Glen Echo Park). Lesson at 7:30. Request dancing from 9-10:45. Mostly recorded music. No partner or experience necessary, but wear comfortable clothing and soft-soled shoes. **Admission \$5.** Co-sponsored by FSGW. **Info: Jamie at 301.320.7099 or dancing-planet@erols.com.**



## General FSGW Concert Information

Unless specifically announced in the Newsletter, there are no advance tickets for FSGW events. All tickets are general admission, and are available at the door.

Doors generally open thirty minutes before the start of the concert.

Absolutely no audio recording or videotaping or photography is allowed at any FSGW concert without the express advance permission of **BOTH** the concert manager and the performer.



# 39th Annual GETAWAY

Friday, October 17 thru Monday, October 20, 2003

Camp Ramblewood, Darlington, MD (near Havre de Grace)

## What is the Getaway?

For nearly four decades, FSGW has held its Getaway weekend so that members and friends can share music, stories, crafts and dance in a relaxed camp setting.

### The Getaway is:

- Music-making under the trees, on the lawn, by the pond, or by the pool;
- Group singing and jamming at its best;
- Informal workshops on singing, dancing, crafts and storytelling led by FSGW members and friends;
- Trying a craft—quilting, basket-making, puppets, and mask-making have been highlights of past years;
- Great food;
- A terrific weekend for the whole family, with lots of special children's activities;
- A chance to renew old friendships and make new ones;
- A beautiful camp with modern facilities in scenic rolling hills adjacent to the Susquehanna River;
- A wonderful chance for parents to introduce their kids to the magic of group singing and dancing—or to discover that magic for the first time themselves.

### Dates and Times

This year's Getaway is scheduled at the height of Fall colors. Camp Ramblewood spreads out over rolling hillsides bordering the Susquehanna River just below the Conowingo Dam, north of Havre de Grace, Maryland. Camp Ramblewood is about 8 miles north of Exits 89 (Havre de Grace) or 93 (Port Deposit) of I-95. It's only 90 minutes North of the I-495 Beltway, in a direction far less subject to traffic jams than Virginia. You may choose to stay over either two or three nights, or you may come for the day if you are unable to get away for the whole weekend. Daytrippers are offered two meals, lunch and dinner each day. (But you must register in advance if you wish to dine!)

The weekend starts Friday evening with a potluck dinner. If you register for two nights, your registration fee covers three wonderful meals and a midnight snack both days on Saturday and Sunday. Three-night registration gives you an additional night's lodging and breakfast on Monday morning.

### Facilities

The dining hall, several common rooms, the pub, the drama barn, the dance barn (with a hardwood sprung floor), and the outdoor pavilion offer all-weather spaces for music making and dancing. NO SMOKING is allowed in any of the camp buildings.

If you choose to go to bed, there are more than 50 rooms, mostly in modern cabins. They feature indoor flush plumbing and hot showers; comfortable beds with box-spring mattresses (bring your own linens and bedding). The buildings are not centrally heated, but we may bring electric space heaters, as long as we don't overload the fuse capacity of any individual cabin. There are handicapped-accessible cabins with wheelchair-accessible bathrooms for those who need them; please indicate any special needs when you register. If you prefer to bring a tent or your own RV, you may do so, and camp on the grounds (no discounts, but you get guaranteed privacy!). If you don't want to sing, there's a pond with boats (and stocked with fish), tennis courts, ball fields, and a trail through the woods to the banks of the Susquehanna. The immediate area offers antiques, history and horse farms. (See more of Camp Ramblewood at its website: [www.ramblewood.com](http://www.ramblewood.com).)

### Volunteer Help

We'll need volunteers to help set up on Friday, to welcome and register guests, to clean up after our Friday night potluck dinner, and to help make sure everything is in order when we check out.

To volunteer contact Charlie Baum at 301.587.2286 or [program@fsgw.org](mailto:program@fsgw.org).



### Fees

Getaway fees depend on whether you're an FSGW member or not, and whether you're an adult or a child. See the registration form for the fee that applies to you. Fees are determined by our actual costs to run this event — food, camp rental, etc.

### Getaway Activities at a Glance

#### Friday —

- Register any time after 3 pm.
- Potluck dinner, with new foods added as each person arrives.
- Song swap and music-making into the wee hours.

#### Saturday —

- Informal music, dance, crafts and storytelling workshops all day.
- Saturday night concert (sign up to tell a story, present a short skit, tune or song).
- Singing and jamming together all night, as late as you care to stay (or stay up, if you're sleeping at camp).

#### Sunday —

- Informal music, dance, crafts and storytelling workshops all day
- Sunday night concert (sign up if you didn't participate on Saturday).
- More singing and jamming after the concert, into the wee hours.

#### Monday —

- Parting songs.
- Farewell breakfast in the dining hall.

### Special Guests

Every year, we invite some special guests to spark the music-making. Friends from all over the world who know about the Getaway through [mudcat.org](http://mudcat.org) also show up. We know the **Shellback Chorus** from Britain is joining us, and people like **Kendall Morse** and **Mick Lane** have told us to expect them.

# FSGW Getaway No. 39

## October 17-20, 2003 • Registration Form

Name \_\_\_\_\_ Home Phone \_\_\_\_\_  
 Address \_\_\_\_\_ Work Phone \_\_\_\_\_  
 City \_\_\_\_\_ State \_\_\_\_\_ Zip \_\_\_\_\_ E-mail address: \_\_\_\_\_

Please confirm receipt of my registration by sending a message to the e-mail address above.

Please DO NOT list my name address phone or e-mail in Getaway Attendees Directory.

Please list ALL who will attend, INCLUDING YOURSELF, select housing preference and compute the cost. List additional names on a separate piece of paper. **Housing choices:** (1) A real bed in a nice room, or (2) Your tent, camper or RV (but there's no discount for that—only guaranteed privacy). **Rooming options:** Mention: Men only room, Women only room, Children, Cabin with no young children. Cabin with music all night in the cabin, Music all night in the next cabin over, Quiet cabin. Let us know if there's anyone (or any group) you'd like to room with, and if you have any special physical needs.

Name of each registrant (as you would like it on your badge)	Age (if child)	Nights			Meals you plan to eat										FSGW		Room options/ I want to room with: (also any special needs)	Cost* (see below)
		Lodging	Fr	Sa	Fr	Sa	Sa	Sa	Su	Su	Su	Su	Mo	Member				
		Fr	Sa	Su	D	B	L	D	B	L	D	B						
1.														Yes	No		\$	
2.														Yes	No		\$	
3.														Yes	No		\$	
4.														Yes	No		\$	
5.														Yes	No		\$	
6.														Yes	No		\$	

Total Due: \$ \_\_\_\_\_

Payment for overnight Getaway attendees may be done in installments. Deposits of \$30.00 per adult and \$15.00 per child required to reserve space. The balance is due by October 4, 2002. After that date space will not be guaranteed. We're sorry, but we cannot give refunds for any cancellations received after Sunday, October 12th unless someone else takes your space. There is a \$10.00 processing fee per person for all cancellations.

Scholarship Donation: \$ \_\_\_\_\_

Amount Enclosed: \$ \_\_\_\_\_

Amount due by October 5: \$ \_\_\_\_\_

<b>* Costs:</b>			
	<b><i>"The whole weekend"</i></b>	<b><i>"Most of the weekend"</i></b>	<b><i>"Daytripper—per day"</i></b>
	<b><u>3 Nights (Fri., Sat., &amp; Sun.)</u></b>	<b><u>2 Nights (Fri. &amp; Sat.)</u></b>	<b><u>(includes lunch &amp; dinner)</u></b>
<b>Members**</b>			
Adults 19 and older:	<b>\$143.00</b>	<b>\$133.00</b>	<b>\$46.50</b>
Children 8 through 18, and full-time students:	<b>\$125.00</b>	<b>\$115.00</b>	<b>\$40.00</b>
Members of the Shellback Chorus:	<b>\$125.00</b>	<b>\$115.00</b>	<b>\$40.00</b>
Children 3 through 7:	<b>\$67.50</b>	<b>\$57.50</b>	<b>\$25.00</b>
Children 2 and younger:	<b>free</b>	<b>free</b>	<b>free</b>
<b>Non-members:</b>			
Adults 19 and older:	<b>\$161.00</b>	<b>\$151.00</b>	<b>\$53.00</b>
Children 8 through 18, and full-time students:	<b>\$140.00</b>	<b>\$130.00</b>	<b>\$45.00</b>
Children 3 through 7:	<b>\$75.00</b>	<b>\$65.00</b>	<b>\$30.00</b>
Children 2 and younger:	<b>free</b>	<b>free</b>	<b>free</b>

Daytrippers who wish to bring their own food need not register in advance. Day rate (per day) without meals: Members: \$7 adults 18 and older; \$5, ages 8-18; \$3 ages 3-7; 2 and under free. Nonmembers: \$10 adults 18 and older; \$7 ages 8-18; \$5 ages 3-7; 2 and under free.

*\*\*Current full members of FSGW. If you are not yet a member, you may join the Society now and get member rates.*

Vegetarian? Any acute allergies we should know about?: \_\_\_\_\_

Thanks to the Linda Lieberman/David Olive Memorial Fund, some scholarship money is available for those who need help in affording the Getaway. If you need assistance, contact Charlie Baum (see phone and e-mail below). Contributions to replenish the fund are always welcomed and are tax-deductible! We hold a silent auction at the Getaway to help replenish the fund—you may wish to donate items to auction off to help others who can't afford the whole cost of the weekend.

Children 8 and younger must be accompanied by at least an equal number of adults who are responsible for their care and supervision throughout the event. There is a maximum of 3 children under 12 per adult.

I can help set up on Friday (3-6 pm). I can help clean up Friday night's pot-luck. I can help clean up on Monday (9 am-noon).  
 I can help with registration of guests at the camp. I am interested in a scholarship.

Mail with payment to our registrar:

FSGW Getaway c/o Dennis Cook, 16125 Malcolm Drive / Laurel, MD 20707-3230 / USA / 301-776-4314

We look forward to seeing you at the Getaway.

If you have any questions, contact Charlie Baum at 301-587-2286 or program@fsgw.org; cc: chbaum@earthlink.net

If you find you cannot come, **please cancel your reservation.**

FSGW Hotline: 202-546-2228 • [www.fsgw.org/getaway.htm](http://www.fsgw.org/getaway.htm)



**FSGW House Concert****Upper Marlboro, MD**

# Bill & Libby Hicks

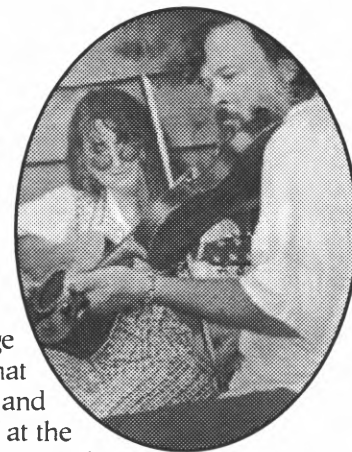
*Mainstays of North Carolina Traditional Music***Friday, September 12 • 8 pm**

Performing together since 1982, **Bill and Libby Hicks** have had plenty of time to merge minds and styles and have developed a simpatico duet style on fiddle, guitar and keyboard that often makes people check to see if it really is only two people playing. Along with performing and playing for dances, they like to pass along the fun of old-time music. They have been on staff at the Augusta Heritage Workshops in West Virginia several times and last year they were staff musicians at the National Storytelling Conference in Kingsport, Tennessee.

**Bill and Libby** have been mainstays of the North Carolina traditional music scene since the 1970s. Libby was the harmonizing half of a duet with **Lightnin' Wells** for seven years. They specialized in the old-time "brother duet" style of singing.

Bill, at the same time, was finding fame if not fortune touring the United States and Europe as a founding member of the Red Clay Ramblers. He made a name for himself all over the map with his energetic fiddling, developed over years of seeking out and learning literally at the feet of the old masters such as Tommy Jarrell and Burl Hammons. Bill also has made a place for himself in thousands of record (and now CD) collections with a long string of recordings with the Ramblers. For more info on Bill's career, see [www.reclayramblers.com](http://www.reclayramblers.com), a website devoted to the original band and its members.

The concert is at Mount Luberntia, a restored colonial plantation house where George Washington sent his stepson to school (And yes, he really slept there!), home of Andy and Sondra Wallace in Upper Marlboro, MD. **For info, contact Andy or Sondra at 301.324.7311. Admission is \$12 FSGW members; \$16 non-members**



## Other FSGW Events

**FSGW Open Sing • Silver Spring, MD****Friday, September 5 • 8:30 - 11:45 pm**

Come to the FSGW Open Sing on the first Friday of each month. We take turns doing music that's connected (however vaguely) to a given topic. Sing, play, request a song, or just listen. People new to the Sing may present any song regardless of topic. This month's topic is "Names of Persons, Fictional or Otherwise." John Jacob Jingleheimer Smith his name is my name too. What's your name? Pud'n tame, ask me again and I'll tell you the same. What's in a name? That which we call a rose by any other name would still stink. Come sing about some names that are near and dear to you, or vice-versa. We may not all have memorable names, or voices, but we always have a good time. **The September Sing will be held at the home of Dottie Hurley. Call Dottie at 301.871.7652 for directions/info.** Donations of refreshments are welcome. Please rehearse your song in advance, so you're comfortable with the tune (even if you need to "cheat" and look at a copy of the words).

**FSGW Gospel Sing. Potomac, MD****Sunday, September 14, 4 - 8 pm**

Gospel sings are held the second Sunday of every month at various homes. Singing starts at 4pm with a break for a covered dish supper at 6pm, followed by more

singing. Everyone is welcome! The September Gospel Sing will be at the home of **Peggy and Hunter Jones in Potomac, MD Info/directions: 301.762.6343.**

**Storyswap • Beltsville, MD****Saturday, September 20 • 7:30 pm**

Storytellers and listeners are invited to share their tales in the home of **Bill and Maren Mayhew**. Free, potluck snacks. **Info/directions/rsvp: 301.595.7920.**

**FSGW Sacred Harp Singing • Arlington, VA****Sunday, September 28 • 4 - 8pm**

**St. Peter's Episcopal Church, 4250 North Glebe Rd.** FSGW sponsors free singings of early American hymns, anthems, and fugues in four-part harmony, monthly on the fourth Sunday. The principal sourcebook is *The Sacred Harp* (loaner tune books are available), but shape-note compositions by local singers are also sometimes sung. We sing from 4 to 6, share a potluck supper, and then sing some more. All are welcome. **Info: 301.229.8534.**

**Directions:** St. Peter's is one-half mile south of Chain Bridge, on the west side of Glebe Road (crossing from Washington, on your right, from Virginia, on your left). The church is not visible from Glebe Rd. Turn on Tazewell St. to reach the parking lot.

# Concerts & Concert Series

## Pre-Festival Concert • Takoma Park, MD

**Saturday, September 6 • 7:30 pm.**

Focus and the Takoma Park Folk Festival present **MAGPIE** in a Pre-Festival Concert. Special guest **Franklin Taggart** will open. Takoma Park Presbyterian Church, 310 Tulip Avenue. **Info: 202-607-6156 or 301-589-3717.** Tickets \$12 (\$10 Focus members) [www.FocusMusic.org](http://www.FocusMusic.org) or [www.tpff.org](http://www.tpff.org)

## GrooveLily Concert • Vienna, VA

**Friday, September 12 • 8 pm**

At Jammin' Java, 227 Maple Avenue East. \$15 general admission, all ages, non-smoking venue.

**Info: 703.255.1566 ext. 8 or [www.jamminjava.com](http://www.jamminjava.com)**

## Songs that Matter Music Show Case • Odenton, MD

**Saturday, September 20 • 7-10 pm**

A showcase hosted by **Joe Isaacs** featuring Joe and a variety of performers including **Mike Duck, Patrick Sharpe** and others. The location is Coffee with Friends, 8385 Piney Orchard Parkway (junction of 175 and Piney Orchard). Free.

**Info: Joe Isaacs 443-259-0257 or [jcisaacs@star-power.net](mailto:jcisaacs@star-power.net) or [www.josephisaacs.com](http://www.josephisaacs.com)**

## Simple Gifts • Ashburn VA (near Leesburg)

**Sunday, October 5 • 2pm**

Three women + 12 instruments = a wide variety of ethnic folk music. Hear Irish jigs, American reels, Gypsy, Klezmer and Scandinavian melodies. You'll also see some fine clogging and learn to play the spoons! Free. **Info: 703.777-0541.**

## CONCERT SERIES

### Mondays (Mostly!):

### Institute of Musical Traditions (IMT) Series

#### • Silver Spring, MD

**Sundays/Mondays/Saturdays as noted • 8pm**

Website: [www.imtfolk.org](http://www.imtfolk.org). **Info: 304.754.3611 or email [imtfolk@erols.com](mailto:imtfolk@erols.com).**

#### September

8 (Monday) **Open Mike** at Mayorga Coffee Factory, 8040 Georgia Ave, Silver Spring, MD. **Info: Call 301.754.3611 to reserve a slot.** Free for performers and audience.

15 (Monday) **Lea** At Unitarian Universalist Church of Silver Spring, Md., 10309 New Hampshire Avenue, Silver Spring, MD. Tickets \$12 advance/\$15 door.

21 (Sunday) **Kitka** At UU Church of Silver Spring. Tickets \$14 advance/\$17 door.

22 (Monday). **April Verch Quartet.** Artist website: [www.aprilverch.com](http://www.aprilverch.com). At UU Church of Silver Spring, see above. Tickets \$12 advance/\$15 door.

27 (Saturday) **Grace Griffith and friends** Artist website: <http://www.blixstreet.com/griffith.html>. At UU Church of Silver Spring. Tickets \$14 advance/\$17 door.

29 (Monday) **Focus** CD Release Party featuring **Carey Creed, Zoe Mulford, Dan Hart, Rachel Cross, Dave Kline, J. P. McDermott, Aura & Avril** and many more!, Artist website: [www.focus-music.org](http://www.focus-music.org). At UU Church of Silver Spring. Tickets: \$12 advance/\$17 door.

### Tuesdays:

### Folk Club of Reston-Herndon Concert. • VA

**Tuesday, September 23 • 7:30pm**

**Alistair Mooch** straddles the worlds of traditional folk/roots and contemporary singer/songwriting; his lyrics have been compared to those of Woody Guthrie & John Prine. At the Tortilla Factory Restaurant, 648 Elden Street, a smoke-free, friendly space. \$10 (\$9 Folk Club members) **703.435.2402 or [clubacoustic@erols.com](mailto:clubacoustic@erols.com)**

### Wednesdays:

### Vic's Music Corner • Rockville, MD

**2nd and 4th Wednesdays • 8pm**

Vic's is dedicated to introducing acoustic singer/songwriters from across the country to the greater Washington area. At O'Brien's, 387 E. Gude Drive, Rockville, MD. Smoke-free. Tickets: \$12 advance/\$15 door unless otherwise noted. **For reservations email [reba.heyman@verizon.net](mailto:reba.heyman@verizon.net) or call 301-984-1897. Directions and Information: <http://www.victorheyman.com>.**

### September

10 Eric Schwartz with Christina Muir opening

24 Terri Allard with Jean Synodinos opening

### Baldwin's Station • Sykesville, MD

**Wednesdays or Thursdays as noted • 8 pm**

7618 Main St., Sykesville, MD 21784. Productions by Uptown Concerts, a non-profit organization affiliated with the North American Folk Alliance.

**Info: [joycesica@aol.com](mailto:joycesica@aol.com) or Joyce R. Sica, 410.922.5210. Tickets/reservations: 410.795.1041.**

### September

3 (Wednesday) **Lisa Moscatiello and Sloan Wainwright**

4 (Thursday) **The Hard Travellers**

10 (Wednesday) **Joanne Juskus**

17 (Wednesday) **Banjerdan & J.B. Beverley**

24 (Wednesday) **John Jennings**

## Concerts and Concert Series *continued*

### Fridays:

#### The Cellar Stage at St. John's • Baltimore, MD *Fridays • 8pm*

Co-sponsored by Uptown Concerts and St. John's of Hamilton, at the United Methodist Church, 5315 Harford Road. Access the large parking lot from Gibbons Avenue. Info: Joyce R. Sica, 410.922.5210 or 410.521.9099; or [uptownconcerts@aol.com](mailto:uptownconcerts@aol.com) or <http://www.charm.net/~dirtylin/uptown.html>

### September

- 12 Fundraiser for Uptown Concerts. Tickets \$10
- 19 John Gorka!!! Brian Gundersorf opening. Tickets \$20
- 26 *Cherish the Ladies* . Tickets \$20.

### Saturdays/Sundays:

#### Moore Music in the House Concert • Rockville, MD

A house concert series in Rockville. More info at [www.mooremusic.org](http://www.mooremusic.org). For reservations and directions, call 301-309-0983 or send email to [scott@mooremusic.org](mailto:scott@mooremusic.org).

### September

- 27 (Saturday) 8 pm. Cliff Eberhardt and Jack Williams (suggested donation: \$20)
- 28 (Sunday) 1 pm. - Cliff Eberhardt songwriting workshop (\$35)



## Jams/Open Mics/Audience Participation

### Listed by day of the week

#### Sundays:

#### Scottish Traditional Music Jam • Wheaton, MD *Sunday September 7 • 3-6 pm*

Scottish traditional music jam, first Sundays, Royal Mile Pub, 2407 Price Avenue. Musicians welcome. Info: John Ward, 301.627.2770 or [fidhle@iamdigex.net](mailto:fidhle@iamdigex.net)

#### CABOMA Jam • Arlington, VA *September 14 and 28 • 2 pm*

Capitol Area Bluegrass and Old-Time Music Association (CABOMA) holds jams the 2nd and 4th Sundays of each month. Lyon Park Community Center, corner of N. Filmore and Pershing, Arlington, VA. Info: Dave at 301.274.3441.

#### Irish Traditional Music Seisiun • Wheaton, MD *Sunday September 28 • 7 - 10 pm*

Fourth Sundays, Royal Mile Pub, 2407 Price Avenue, Wheaton, MD. Seisiun musicians welcome. Info: Dennis at 301.422.6550.

#### Mondays:

#### Jammin' Java • Vienna, VA *Mondays • 7:30 - 10:30 pm*

Two songs or 8 minutes total. Free, open to all. 231 Maple Avenue East. Sign up at 7, show starts at 7:30. Info: Steve Key at 202.244.7524 or [stevekey@aol.com](mailto:stevekey@aol.com) or 703.255.1566.



#### Tuesdays:

#### Sea Chantey Open Pub Sing • Wheaton, MD *Tuesday, September 2 • 8 pm*

*The Ship's Company* chanteymen host an open mike sea chantey on the 1st Tuesday of each month at 8 pm, Royal Mile Pub, 2407 Price Avenue, Wheaton, MD. No cover/minimum; arrive early for a table. Participation encouraged but not mandatory. Requests are honored if possible. Mostly a capella but instruments are welcome. Info: Myron Peterson at [shipscompany@hotmail.com](mailto:shipscompany@hotmail.com)

#### Folk Club of Herndon-Reston • Herndon, VA *Tuesdays • 7:30 - 9:45 pm*

Tortilla Factory, 648 Elden Street, Herndon, VA. Open mic format. Each performer gets 12 minutes (including setup time). \$1 donation. 2nd Tuesday includes a 25-minute member showcase. Smoke-free environment. Info: 703.435.2402.

#### Wednesdays:

#### Laurel Jam Session • Laurel, MD *2nd and 4th Wednesdays • 7 - 10 pm*

Adults who enjoy acoustic music are invited to come and sing, play, or listen to folk, bluegrass, and other traditional music in an informal setting. Phelps Senior Center, 701 Montgomery Street. Info: 301.776.6168 during business hours.

#### Open Mic Nite • Alexandria, VA *Wednesday, September 17 • 7 pm*

St. Elmos Coffee Pub, 2300 Mt. Vernon Avenue. Third Wednesdays, hosted by Michelle Swan. Two songs each. All are welcome. Signup starts at 7. Info: 703.739.9268 or [mswan64@yahoo.com](mailto:mswan64@yahoo.com).

## Jams/Open Mics/Audience Participation *continued*

### Thursdays:

**American Balalaika Symphony, Open Rehearsals • Arlington, VA**

**Thursdays • 8 pm**

Fiddle, mandolin, and guitar experience translates easily to the balalaika and domra. Enthusiastic beginners welcome! Come play Russian and East European folk and classical music. Most Thursdays at The Church of the Covenant, 2666 Military Road, Arlington. **Info: John at JohnK@balalaika.biz or 703.837.9083.**

### Fridays:

**Dupont Music Circle • Arlington, VA**

**Friday, September 5 and 19 • 8 pm**

Since 1983 the informal Dupont Music Circle has met to sing and play English, Scottish, Welsh, Irish, Quebecois, American, and other traditional music just for fun. Usually the first and third Fridays. (Call to confirm dates.) **Info: Liz at 703.658.0957.**

**Glen Echo Open Band • Glen Echo, MD**

**September 12 • 8:30 - 11:30 pm**

The fabulous Glen Echo Open Band plays for the second Friday contra dance. All instruments and levels of ability are welcome. **Info: fnd.folkdancer.com.**

### Saturdays:

**Archie Edwards Blues Jam • Washington, DC**

**Saturdays • 1 pm**

The Archie Edwards Blues Heritage Foundation holds an acoustic blues jam almost every Saturday afternoon, starting about 1 pm. All skill levels welcome. 1007 Bunkerhill Road, NW, Washington, DC. **Info/confirmation: 202.5267539.**

### Miscellaneous:

**Mixed Instrument Jam/Workshop • Great Falls, VA**

**Meets every 3 weeks**

Int/adv. jam workshops led by **Ken Kolodner** (of *Helicon & Greenfire*) on fiddle. All instruments welcome. Expect lots of fun new tunes, playing melody, backup, harmonies, baselines, rhythms, etc. with Ken's expert guidance. Old Time, contra, Celtic, French-Canadian — all possible. Meets approx. every 3 weeks beginning in Sept. Cost \$20. For schedule and details contact **Kathy at ksanderses@aol.com or 703-757-2205.**



## Workshops, Weekends, Festivals, & Special Events

**Takoma Park Folk Festival • Takoma Park, MD**

**Sunday, September 7 • 11 am - 6:30 pm**

The 26th annual Takoma Park Folk Festival will be held at Takoma Park Middle School, 7611 Piney Branch Road. The Festival will feature 7 stages of music and dance, a crafts fair, community-group tables, children's activities, and international food. FREE. We need a few more volunteers to help plan the event and many volunteers to work on Festival Day.

**Info: www.tpff.org, or 301.589.3717, or info@tpff.org.**

**Vocal Performance Workshop • Vienna, VA**

**Saturday, September 6 • 10am - 1pm**

Featuring vocalist/songwriter **Verlette Simon**. Presented by The Songwriters' Association of Washington (SAW) and Ubervox at Jammin' Java, 231 Maple Avenue E. Vienna, VA. Cost for SAW and Ubervox members is \$25, for others, \$35. After September 2nd, the cost increases to: \$30/\$40. To register: send a check, payable to SAW, to 4200 Wisconsin, Ave., NW, PMB 106-137, Washington, DC 20016. Or use the registration form at **www.saw.org.**

**Upper Potomac Dulcimer Fest • Shepherdstown, WV**

**Friday- Sunday, September 12-14**

Workshops, classes, concerts and jam sessions for players of the hammered dulcimer and other instruments. All levels of instruction, rental instruments available. Student/teacher open mic on Friday night, showcase concert on Saturday featuring **No Strings Attached** and **David Moran** with **Joe Morgan** at the Shepherd College Frank Performing Arts Center. Pre-registration highly recommended. **Info: Joanie Blanton 304.263.2531 or Blanton@intrepid.net or www.intrepid.net/~blanton/UPDF.**

**Irish Traditional Music Festival • City of Fairfax, VA**

**Saturday, September 13 • 12noon - 6pm**

The Fairfax City Parks and Recreation Department and the O'Neill-Malcom Branch of Comhaltas Ceoltoiri Eireann (CCE) is sponsoring this festival at Van Dyck Park (between the John Wood Center and St. Leo's Church) 3730 Old Lee Hwy. Three stages of traditional Irish music and dance. Free/donations accepted to pay performers a modest fee. Bring a folding chair. **Information: call the Recreation department at 703-7858 or CCE 703-978-8265 ( a few openings left for performers-call)**



## We Need Program Suggestions for FSGW Getaway!!!

### October 17-20 • Camp Ramblewood, MD

The FSGW Getaway is coming up very soon (see page 5) and we'd like your input on this year's program.

Getaway workshops take several forms. Many are sing-arounds on a specific topic, such as "Love songs." Others are concert/workshops, with leaders who have in-depth knowledge of the topic. Still others are teaching workshops. Last year we had two dance sessions and would like to have more this year.

The Getaway has drawn more and more out-of-town musicians and performers in recent years, which means greater variety and more interesting programs. We want to be sure our DC area music community is equally well represented!

Please let the Getaway Program Chair know early if you are planning or hoping to come. Here is the kind of feedback we'd like to have. If you've been to the Getaway in other years, what workshops/concerts etc. would you like to see repeated? Do you have suggestions for workshops? Do you know someone who has a special interest, is hoping to come, and might lead a workshop or do a half hour mini concert? Or would you like to do so if time permits?

Designing the program is quite a challenge. Designing a good variety of workshops and finding knowledgeable leaders for them is just the first step. We work hard to vary the program and workshop leaders from year to year, to have plenty of participatory events, and to satisfy a number of other criteria to create an enjoyable experience for everyone. We'll do our best to fit your suggestions into the program. If you'd like to see a list of suggestions that have been made so far, or to look at the preliminary program, go to [www.fsgw.org](http://www.fsgw.org), select "Calendar" and "2003 Getaway," select "Details," and follow the links at the top of that page. Or, call Rita Ferrara (301.946.2161) or Charlie Baum (301.587.2286) and we'll mail you the list.

## Local Folkal

The FSGW Newsletter provides a listing of local performers who appear at small venues. Send your name or band name, very brief description of your musical style, and web address, e-mail, and/or phone number to the Newsletter Editor.

### SOLO PERFORMERS

BONNEVILLE, JOHNNY [johnnybonneville@hotmail.com](mailto:johnnybonneville@hotmail.com) or 1.888.961.7647. Duet w/ Fiddlin' Phil  
 BRESEE, JERRY <http://www.shenandoahacoustics.com/jbresee>  
 BROWN, MARY BYRD. <http://www.geocities.com/SunsetStrip/Stage/8829/>  
 COOK, JUDY [judy@ceimd.com](mailto:judy@ceimd.com) or <http://www.ceimd.com/folksing.htm> or 301.776.4314  
 CLYBURN, CHARLES H. [www.clyburncharles@hotmail.com](http://www.clyburncharles@hotmail.com) 301.483.0743 African and African-American folktale storyteller  
 CROSS, RACHEL <http://www.rachelcross.com> folk/world music performer  
 DURFOR, CHUCK <http://hometown.aol.com/cdurfor> Fingerstyle guitar.  
 EHRLIG, GRETA singer-songwriter-poet [LivePoetry31@aol.com](mailto:LivePoetry31@aol.com)  
 GELLMAN, STEVEN [Hiddenpoet@aol.com](mailto:Hiddenpoet@aol.com) or [www.HiddenPoet.com](http://www.HiddenPoet.com)  
 HICKERSON, JOE [www.joehickerson.com](http://www.joehickerson.com), [jhick@starpower.net](mailto:jhick@starpower.net) or 301.270.1107 Vintage paleo-acoustic folksinger  
 HOAG, ANDREA <http://www.andreaohag.com> or 301.565.2777 Fiddler, singer, wordsmith.  
 KAMINSKY, RAY <http://www.earbuzz.com/raykaminsky> Piedmont and Delta blues  
 KENNELLY, CLETUS [www.cletuskennelly.com](http://www.cletuskennelly.com)  
 KEY, STEVE [www.stevekey.com](http://www.stevekey.com), [stevekey@aol.com](mailto:stevekey@aol.com) or 202.244.7524 Singer/songwriter, & concert presenter  
 MAGILL, NANCY [mizmagill@aol.com](mailto:mizmagill@aol.com) 301.951.6242 Jazzblufolk tunes  
 MARKLEY, LENA AND SANFORD <http://www.lena-and-sanford.com>  
 MCKNIGHT, ANDREW <http://songs.com/andrew>  
 McVEY, JOHN <http://www.johnmcvey.com>  
 MUIR, CHRISTINA <http://songs.com/hotsoup>  
 PARSONS, BILL [bill@songs.com](mailto:bill@songs.com) or [www.billparsons.com](http://www.billparsons.com)  
 PRASADA-RAO, TOM <http://songs.com/tp>  
 ROSS, GARTH <http://www.garthross.com>  
 SCHWARTZ, ERIC <http://www.eric schwartz.com>  
 SWAN, MICHELLE <http://www.michelleswan.com> Contemporary folk singer/songwriter  
 TAYLOR, LISA <http://www.shenandoahacoustics.com/ltaylor>  
 TWOHY, MARY SUE [www.marysuetwohy.com](http://www.marysuetwohy.com)  
 TYSON, HERB <http://www.herbtysen.com>  
 WILCOX, DOUG ALAN [www.dougalanwilcox.com](http://www.dougalanwilcox.com) Contemporary americana, acoustic pop.  
 WILLIAMS, ROGER acoustic folk, country, old-timey. [wilmacd@starpower.net](mailto:wilmacd@starpower.net) 202.362.5568.

### GROUPS

ALEXANDRIA KLEZTET [kleztet@aol.com](mailto:kleztet@aol.com) or <http://members.aol.com/kleztet/> or 410.521.0616. Traditional and innovative klezmer.  
 BILL KIRCHEN & TOO MUCH FUN [www.billkirchen.com](http://www.billkirchen.com) Roots rock and rockabilly.  
 BLUE MOON COWGIRLS [kecollins@starpower.net](mailto:kecollins@starpower.net) or <http://www.blue-mooncowgirls.com> or 301.270.2586. Acoustic early country  
 BLUESWORKS [www.bluesworksband.biz](http://www.bluesworksband.biz) 301.464.6275 or [bluesworks@aol.com](mailto:bluesworks@aol.com) Blues 'n Boogie - traditional and original  
 BOG WANDERERS CEILI BAND [jessewinch@hotmail.com](mailto:jessewinch@hotmail.com) or 301.589.7537. Five-piece traditional Irish concert and dance band.  
 BOTTOMLAND [bottomland@hotmail.com](mailto:bottomland@hotmail.com) or [www.bottomland.org](http://www.bottomland.org) or 301.587.1198  
 BOYS' NIGHT OUT. [wilmacd@starpower.net](mailto:wilmacd@starpower.net) 202.362.5568 or [fjnebn@erols.com](mailto:fjnebn@erols.com) 703.451.4785. Acoustic guitar, mandolin, bass/bluegrass, old-timey, Irish, folk.  
 CORAL CANTIGAS [www.cantigas.org](http://www.cantigas.org) or 301.816.2314 Spanish/Hispanic choral music.  
 HOT SOUP [hotsoup@pobox.com](mailto:hotsoup@pobox.com) or [www.hotsoup trio.com](http://www.hotsoup trio.com) Harmony and laughter.  
 ISAACS AND FRIENDS [www.geocities.com/isaacs72000](http://www.geocities.com/isaacs72000), [jcisaacs@starpower.net](mailto:jcisaacs@starpower.net) or 443.259.0257 Folk, blues, rock, and world music.  
 JOLIE ROUGE CAJUN BAND [jolie\\_rouge@hotmail.com](mailto:jolie_rouge@hotmail.com) or 703.323.7895. Traditional Cajun and Creole dance music.  
 J.P. McDERMOTT & WESTERN BOP [www.westernbop.com](http://www.westernbop.com), [info@westernbop.com](mailto:info@westernbop.com) or 301.585.3259. Red-Hot Rockabilly & Vintage Honky Tonk.  
 KLEZCENTRICITY [www.klezcentricity.com](http://www.klezcentricity.com) or [djg@well.com](mailto:djg@well.com) or 301.589.4847 Yiddish-American music.  
 KREWE OF RENEGADES [KreweRC@earthlink.net](mailto:KreweRC@earthlink.net) or [www.kreweofrenegades.com](http://www.kreweofrenegades.com) or 301.942.5217. New Orleans R&B, funk, and soul.  
 LIBERTY DAWNE AND THE OVERHAULERS [Libertydawne@erols.com](mailto:Libertydawne@erols.com) Old-fangled country music.  
 OKLAHOMA TWISTERS [www.oktwisters.com](http://www.oktwisters.com) or [okt@pressroom.com](mailto:okt@pressroom.com) or 703.536.9839. Western Swing.  
 ORANGE LINE SPECIAL [orangelinespecial@yahoo.com](mailto:orangelinespecial@yahoo.com) or 703.966.8442.  
 SEDENKA Katya [partan.com](mailto:partan.com) Katya Partan 301-270-4175 Balkan folk songs. Instrumentalists also welcome.  
 SQUEEZE BAYOU [kecollins@starpower.net](mailto:kecollins@starpower.net) or [www.squeezebayou.com](http://www.squeezebayou.com) or 301.270.2586. Traditional Cajun dance music.  
 THE URBAN LEGENDS [www.theurbanlegends.com](http://www.theurbanlegends.com) or [urban.legends@pressroom.com](mailto:urban.legends@pressroom.com). Traditional and contemporary acoustic music.

# September

Sunday	Monday	Tuesday	Wednesday	Thursday
	<b>1</b> 7 Bluemont Morris Dancers 7:30 Bethesda Intl Dance 7:30 Jammin' Java Open Mic 8 Baltimore English Country 8 Bethesda Israeli Dance 8 Bethesda Scottish Country	<b>2</b> 7:30 Herndon-Reston Folk Club 7:30 Silver Spring Israeli Dance 8 Arlington Intl Dance 8 Greenbelt Scottish Country 8 Silver Spring Squares 8 Sea Chantey Open Sing	<b>3</b> 7:30 Rock Creek Morris Women 7:30 Alexandria Scottish Country 8 <b>FSGW ENGLISH COUNTRY</b> 8 Baltimore Contra (Lovely Ln) 8 Baldwin's Station Concert 8 Columbia Intl Dance 8:15 Potomac Israeli Dance	<b>4</b> 7:30 F 7:30 C 8 M 8 F 8 B 8 A
<b>7</b> 11 Takoma Park Folk Festival 3 Scottish Trad. Music Jam 3 Glen Echo Waltz 4 <b>FSGW GOSPEL SING</b> 7:30 <b>FSGW SUNDAY CONTRA</b> COMPANY OF CALLERS III MUSIC: ANDREA HOAG & CHARLIE PILZER	<b>8</b> 7 Bluemont Morris 7:30 Bethesda Intl Folk Dance 7:30 Jammin' Java Open Mic 8 IMT Open Mic/Silver Spring 8 Baltimore English Country 8 Bethesda Israeli Dance 8 Bethesda Scottish Country	<b>9</b> 7:30 Herndon-Reston Folk Club 7:30 Silver Spring Israeli Dance 7:45 Herndon English Country 8 Arlington Intl Dance 8 Greenbelt Scottish Country 8 Silver Spring Squares	<b>10</b> 7 Laurel Jam Session 7:30 Rock Creek Morris Women 7:30 Alexandria Scottish Country 8 <b>FSGW ENGLISH COUNTRY</b> 8 Baltimore Contra (Lovely Ln) 8 Baldwin's Station Concert 8 Columbia Intl Dance 8 Vic's Music Corner 8:15 Potomac Israeli Dance <b>FSGW NEWSLETTER DEADLINE</b>	<b>11</b> 7 R 7:30 F 7:30 C 8 M 8 F 8 An
<b>14</b> 12:30 Hambo Workshop 2 Caboma Jam 3:30 <b>FSGW FAMILY DANCE</b> 4 <b>FSGW GOSPEL SING</b> 4 Alpine Dancers 7:30 <b>FSGW SUNDAY CONTRA</b> LIZ DONALDSON CALLS, BAND TBA	<b>15</b> 7 Bluemont Morris Dancers 7:30 Bethesda Intl Dance 7:30 Jammin' Java Open Mic 8 IMT Concert 8 Baltimore English Country 8 Bethesda Israeli Dance 8 Bethesda Scottish Country	<b>16</b> 7 Handbells 7:30 Herndon-Reston Folk Club 7:30 Silver Spring Israeli Dance 8 Arlington Intl Dance 8 Greenbelt Scottish Country 8 Silver Spring Squares	<b>17</b> 7 St. Elmo's Open Mic 7:30 Rock Creek Morris Women 7:30 Alexandria Scottish Country 8 <b>FSGW ENGLISH COUNTRY</b> 8 Baltimore Contra (Lovely Ln) 8 Baldwin's Station Concert 8 Columbia Intl Folk Dance 8:15 Potomac Israeli Folk Dance	<b>18</b> 7 R 7:30 F 7:30 C 8 An 8 M 8 F
<b>21</b> 3 Glen Echo Waltz 7:30 <b>FSGW SUNDAY CONTRA</b> BILL OLSEN & FOOTLOOSE 8 IMT Concert	<b>22</b> 7 Bluemont Morris 7:30 Bethesda Intl Folk Dance 7:30 Jammin' Java Open Mic 8 IMT Concert 8 Baltimore English Country 8 Bethesda Israeli Dance 8 Bethesda Scottish Country	<b>23</b> 7:30 Herndon-Reston Folk Club 7:30 Silver Spring Israeli Dance 7:45 Herndon English Country 8 Arlington Intl Dance 8 Greenbelt Scottish Country 8 Silver Spring Squares 8 <b>FSGW SPECIAL EVENT</b> <b>RUDRAPATNAM BROTHERS</b>	<b>24</b> 7 Laurel Jam Session 7:30 Rock Creek Morris Women 7:30 Alexandria Scottish Country 8 <b>FSGW ENGLISH COUNTRY</b> 8 Baltimore Contra (Lovely Ln) 8 Baldwin's Station Concert 8 Vic's Music Corner 8:15 Potomac Israeli Folk Dance	<b>25</b> 7 R 7:30 F 7:30 C 8 An 8 M 8 F
<b>28</b> 2 Cliff Eberhardt songwriting workshop/Moore House 2 Caboma Jam 3 Glen Echo Cajun Dance 4 <b>FSGW SACRED HARP</b> <b>SINGING</b> 7 Irish Seisiun 7:30 <b>FSGW Sunday Contra</b> TED CRANE & CORN DOGS	<b>29</b> 7 Bluemont Morris 7:30 Bethesda Intl Folk Dance 7:30 Jammin' Java Open Mic 8 Focus CD Release Party 8 Baltimore English Country 8 Bethesda Israeli Dance 8 Bethesda Scottish Country	<b>30</b> 7:30 Herndon-Reston Folk Club 7:45 Herndon English Country 8 Arlington Intl Dance 8 Greenbelt Scottish Country 8 Silver Spring Squares	<b>Love is space</b>	

2003

Thursday	Friday	Saturday
<b>5</b> <b>FSGW INTL FOLKDANCE</b> Hevy Chase Intl Folk Dance t. Vernon Intl Folk Dance oggy Bottom Morris Men aldwin's Station Concert mer. Balalaika Symphony	<b>5</b> 8 Dupont Music Circle 8 Charlottesville Contra <b>8:30 FSGW OPEN SING</b> 8:30 Friday Night Contra 8:30 Greenbelt Intl Folk Dance	<b>6</b> 1 Archie Edwards Blues Jam 7:30 Pre-TPFF Concert/MAGPIE 1 Continentals Band Fall Dance 8 WSDC Glen Echo Swing Dance 9 Catonsville Zydeco Dance
<b>12</b> eston Concert <b>FSGW INTL FOLKDANCE</b> Hevy Chase Intl Folk Dance t. Vernon Intl Folk Dance oggy Bottom Morris Men mer. Balalaika Symphony	<b>12</b> 7:30 Acoustic Coffeehouse Open Mic 8 Cellar Stage at St. John's 8 Jammin' Java/GrooveLily <b>8 FSGW HOUSE CONCERT:</b> <b>BILL &amp; LIBBY HICKS</b> 8:30 Friday Night Contra 8:30 Glen Echo Open Band 8:30 Greenbelt Intl Folk Dance	<b>13</b> 12n Irish Trad. Music Fest/Fairfax 1 Archie Edwards Blues Jam 5 Baltimore Family Dance 8 Baltimore Contra (St. Mark's) 8 Silver Spring English Country 8 Fairfax Ceili 8:15 Greenbelt Israeli Oldies
<b>19</b> eston Concert <b>FSGW INTL FOLKDANCE</b> Hevy Chase Intl Folk Dance mer. Balalaika Symphony t. Vernon Intl Folk Dance oggy Bottom Morris Men	<b>19</b> 8 Dupont Music Circle 8 Cellar Stage at St. John's 8:30 Friday Night Contra 8:30 Greenbelt Intl Folk Dance	<b>20</b> 1 Archie Edwards Blues Jam 4 Capital Autoharp Club 5:30 Glen Echo Park Gala 7:30 <b>FSGW Storyswap</b> 9 WSDC Glen Echo Swing Dance 8 Herndon English Dance 8 <b>FSGW Monthly Free</b> <b>Program</b> <b>NEXTRADITION</b>
<b>26</b> eston Concert <b>FSGW INTL FOLKDANCE</b> Hevy Chase Intl Folk Dance mer. Balalaika Symphony t. Vernon Intl Folk Dance oggy Bottom Morris Men	<b>26</b> 8 Cellar Stage at St. John's 8:30 Friday Night Contra 8:30 Greenbelt Intl Folk Dance	<b>27</b> 1 Archie Edwards Blues Jam 8 Frederick Contra 8 IMT Concert 8 Moore House Concert

and time measured by the heart.

- Marcel Proust

ADVANCE  
NOTICE

FSGW • 2003

Thursday, October 9

**MARTYN WYNDHAM-READ**English & Australian traditional songs  
Location TBA

Friday-Monday, October 17-20

**39TH ANNUAL****FSGW GETAWAY**Lots of singing and fun for all!  
Camp Ramblewood, Darlington, MD

Wednesday, October 22

**BRIAN PETERS**English traditional singer & squeezebox  
Location TBA

Saturday, November 15 • 8 pm

FSGW Program FREE to members  
**Knox Presbyterian Church,**  
**Falls Church, VA**

Saturday, December 13 • 8 pm

FSGW Program FREE to members  
**Knox Presbyterian Church, Falls**  
**Church, VA**

FSGW • 2004

April 2-4, 2004

**15TH ANNUAL POTOMAC**  
**RIVER SINGING**  
**CONVENTION**

April 16-18, 2004

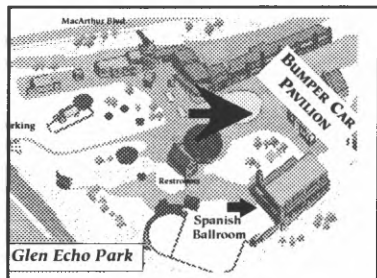
**22ND ANNUAL**  
**CHESAPEAKE DANCE**  
**WEEKEND**

## DIRECTIONS TO FREQUENT VENUES:

### Washington Ethical Society (WES)

**Auditorium.** 7750 16th St., NW, just south of the intersection of Kalmia Rd. and 16th St., about four blocks inside the DC/MD line.

**From the Beltway:** Take the Georgia Avenue South exit. Stay in either right lane. Go 0.4 miles from the exit ramp, where the right lanes curve and put you on 16th St South. Follow 16th past East-West Hwy (Rte 410); cross the MD/DC line at Portal Dr. Kalmia Road is the first traffic signal south of the line, and WES is the second building on the right after you cross Kalmia. Park on Kalmia Road by turning right or left at the light.



**Bumper Car Pavilion/Spanish Ballroom, Glen Echo Park.** 7300 MacArthur Blvd. at Goldsboro Rd, in Glen Echo, MD.

The Bumper Car Pavilion is located just past and to the

right of the carousel. The Spanish Ballroom further to the right.

### From the Beltway:

**MARYLAND SIDE:** at 2-lane Exit 40 take the left fork for Cabin John Parkway. Where Cabin John merges with Clara Barton Pkwy, move into the left lane, under the overhang.

**VIRGINIA SIDE:** get into the far right hand lane at the top of the bridge. At the first fork, bear right. Stay in the left lane; watch for Cabin John traffic merging from the right at the overhang.

**MD/VA:** Watch for signs to MacArthur Blvd. Make a very sharp hairpin turn and move immediately into the right lane. At the T intersection/stop sign, turn left onto MacArthur Blvd. Upper parking lot on the left. For lower parking lot, go around the small traffic circle and make the first left onto Oxford St.

**By public transportation:** Take the #29 bus from the Friendship Heights Metro Station. Ask the driver to let you know when to get off for Glen Echo Park. The bus stops running before the dance ends. Ask the dance coordinator to announce you need a ride. We've never left anybody at the park. Last bus leaves Friendship Heights Metro at 7:30 pm.

### Glen Echo Town Hall

6106 Harvard St., Glen Echo, MD:

### From the Beltway:

**MARYLAND SIDE:** at 2-lane Exit 40 take the left fork for Cabin John Parkway. Where Cabin John merges with Clara Barton Pkwy, move into the left lane, under the overhang.

**VIRGINIA SIDE:** get into the far right hand lane at the top of the bridge. At the first fork, bear right. Stay in the left lane; watch for Cabin John traffic merging from the right at the overhang. **MD/VA:** Watch for signs to MacArthur Blvd. Make a very sharp hairpin turn and move immediately into the right lane. At the T intersection/stop sign, turn left onto MacArthur Blvd. Go around the small traffic circle. Third left is Harvard Ave.

**PLEASE NOTE:** Please park in the lot behind the hall, on University Drive, or on the east side of MacArthur, NOT on Harvard Street.

# Volunteers Needed!!!

The FSGW Sunday Night Contra Dance is looking for several volunteers to work the door. (Non-dancers, please consider — you can listen to contra dance music all night!). If you, dear reader, are interested, please contact **Janine Smith, Dance Chair, at 301.926.9142.**

Volunteers are needed to "man" the FSGW membership table at the **Takoma Park Folk Festival on Sunday, September 7 from 12 noon to 6pm.** Sign up for an hour or two. You'll be handing out newsletters, talking up the benefits of belonging to FSGW, and encouraging new memberships. Interested? Contact **Lynn Pastore, Membership Chair at 301.577.0745.**



## Workshops, Weekends, Festivals, & Special Events *continued*

### Hambo Workshop • Glen Echo, MD

**Sunday, September 14 • 12:30-3 pm**

At Glen Echo Town Hall. **Jamie & Betsy Platt** teach this workshop only once or twice a year. **Andrea Hoag**, one of the finest Swedish-style fiddlers in the U.S, will accompany them. This workshop will give you enough time to learn the basics and practice this popular Scandinavian turning dance. There is room for only 15 men/leaders and 15 women/followers. Please send a check (\$12 per person), payable to Dancing Planet, to 6105 Yale Avenue, Glen Echo, MD 20812. If you are an experienced hambo dancer and would like to attend the last 45 minutes of this workshop, please call us in advance. 301.320-7099 or [dancingplanet@erols.com](mailto:dancingplanet@erols.com)

### Change Ringing with Handbells • Frederick, MD

**Tuesday, September 16 • 7 pm**

Change ringing creates beautiful aural mathematical patterns, rather than melodies. Originally bellringers used handbells for practice, instead of using full size bells in drafty bell towers. Beginners and "ringers" welcome. If you can count to 8 and have a sense of humor, you might enjoy this. Info: **Jenny** at 301.371.4312 or [pi@xecu.net](mailto:pi@xecu.net)

### American Dance Weekend • Capon Bridge, WV

**Friday-Sunday, September 19-21**

It's not too late to sign up for the American Dance Weekend at Buffalo Gap camp. Enjoy a weekend of contras, squares, music workshops, waltz, and, of course, the notorious Buffalo Squares Contest. **Beth Molaro** and **Bill Olson** will be calling dances to music by **Flapjack** and **Footloose**. Sign up early to reserve your spot on the dance floor. Flyers available at local dances and on the website. Info: [BuffaloBoe@att.net](mailto:BuffaloBoe@att.net) or [www.contradancers.com](http://www.contradancers.com)

### Glen Echo Park Gala • Glen Echo Park, MD

**Saturday, September 20 • 5:30 pm - 1:00 am**

"In Full Swing"—the rebirth of Glen Echo Park! Celebrate with an evening of cocktails, dinner, dessert, and delightful entertainment. Swing dance to the **Brooks Tegler Big Band** and contra dance to the **Avant Gardeners + Two**. Glen Echo Park, Glen Echo, MD. Details: [http://www.glenechopark.org/gep\\_gala\\_web-page1.htm](http://www.glenechopark.org/gep_gala_web-page1.htm)

### Reston Multicultural Festival • Reston, VA

**Saturday, September 20 • 10 am - 6 pm**

In Reston, "down home" cooking can mean anything from deep fried catfish to baba ganoush. Once a year, the community celebrates its remarkable diversity at the Reston Multicultural Festival. Now in its fourth year, the Festival is a one-day extravaganza at the Lake Anne Village Center of music, dance, art, crafts and food.

Free. Info: **Haywood R. Hopson, Sr.**, at 703.648.2838 or [www.restonweb.com/multiculturalfestival/](http://www.restonweb.com/multiculturalfestival/).

### Mountain Stage NewSong Festival • Charles Town, WV **Friday - Sunday, September 26-28**

Featuring **Nickel Creek**, **Kathy Mattea**, **Tim O'Brien** and **Darrell Scott**, **Jesse Harris**; **Corey Harris**, **Last Train Home**, **Terri Hendrix** and **Lloyd Maines** (yup, Natalie's dad), **Johnsmith**, **Paul Reisler** with **Anna Wolfe**, and **the Voices of West Virginia** tour (**Keith & Joan Pitzer**, **Kate Long & Todd Burge**). The festival is devoted to the art and craft of original music by performing songwriters and includes workshops, a national songwriter's contest, arts and crafts, kids music workshops, campfire jams and music late into the night. The festival concludes on Sunday with a live performance of "Mountain Stage" for future broadcast. <http://www.newsongfestival.com/>

### Cliff Eberhardt Songwriting Workshop • Rockville, MD **Sunday, September 28 • 1 p.m.**

Cost \$35. More info at [www.mooremusic.org](http://www.mooremusic.org). For reservations and directions, call 301-309-0983 or send email to [scott@mooremusic.org](mailto:scott@mooremusic.org).

### Blues Workshop Series • College Park, MD **October and November**

Learn to play the blues in small workshops at the Clarice Smith Center for the Performing Arts, College Park, MD with **BluesWorks** - **Judy Luis-Watson** (piano); **Paul Watson** (harmonica); and **Mark Puryear** (guitar). Series of four workshops for beginning blues enthusiasts. Reading music is not required.

**Piano** 11 am - 12 noon, Saturday, Oct. 25 and Nov. 1, 8, 15 (bring keyboard)

**Harmonica** 12:15 - 1:15 pm, Saturday, Oct. 25 and Nov. 1, 8, 15 (bring C & D harps)

**Guitar** 1:30 - 2:30 pm, Sunday, Oct. 26 and Nov. 2, 9, 16 (bring guitar)

Cost: \$140 Prince George's & Montgomery County residents; \$170 non-residents. Register through MD Parks & Planning on-line: [www.pgparcs.com](http://www.pgparcs.com) or by phone: (301) 583-2665. For workshop info, visit [www.bluesworksband.biz](http://www.bluesworksband.biz)

### Terpsichore's Holiday • Cumberland MD **December 27 - January 1, 2004**

Dance in the New Year with a celebration of American dance and folk music. In addition to contras and squares, there will be classes in waltz, clogging, Irish socials, couples, rapper and English. There is also an excellent children's program. Staff includes **Susan Taylor**, **Gaye Fifer**, **Laura Robertson**, **Marianne O'Daugherty**, **Diane Ortnier**, **Steve Hickman**, **John Devine**, and **Marty Taylor**. Our celebration will be held at Rocky Gap, Maryland's only 4 star resort. Info: **Jeff Kenton** 301.587.1525 ([jkenton@verizon.net](mailto:jkenton@verizon.net)) or **Bob Mathis** 301.589.7539 ([talibob@starpower.net](mailto:talibob@starpower.net)) or [www.terpsichoreholiday.com](http://www.terpsichoreholiday.com)



# Dances

## CAJUN/ZYDECO

### Somebody Scream Dance Series • Catonsville, MD *Saturday, September 6 • 9 pm to midnight.*

Music by **Andre Thierry** and **Zydeco Magic**. Barn Theater at Catonsville Community College. Partners not necessary, newcomers welcome! Free dance lesson at 8. Admission: \$10, \$8 for Baltimore Folk Music Society members. Co-sponsored by BFMS and Catonsville Community College Office of Student Events. **Info:** [TriciaR1@aol.com](mailto:TriciaR1@aol.com) or **Cajun/Zydeco web site:** <http://www.cajunzydeco.net/>

**Directions:** From I 95, exit at Route 195; take Route 166 north (Rolling Road) towards Catonsville. At the second light (Valley Road) turn left onto the campus. Barn Theater is the stone building on the hill beyond parking lot. Free, well-lit parking.

### Cajun Dance • Glen Echo, MD *Sunday, September 28 • 3pm*

Dance to the music of *The Riverdale Ramblers* in the Spanish Ballroom. Lovely Cajun waltzes and two steps. Lesson 3-3:30; dance 3:30 - 6:15.

**Info:** **Crawfish Productions** at 301.309.0895 or [ewicker@concentric.net](mailto:ewicker@concentric.net)

## COMMUNITY/FAMILY

*For the FSGW Community Dance, see page 2.*

### Family Dance • Baltimore, MD *Saturday, September 13 • 5 - 6:30 pm*

(Followed by potluck dinner from 6:30-7:30 pm)

**Susan Taylor** calls to *Some Assembly*. At Saint Mark's on the Hill Parish Hall, 1620 Reistertown Rd., Baltimore, MD, 0.5 miles inside the Baltimore Beltway (695) at Exit 20 South. Members \$4, non-members \$5. **Info:** [www.bfms.org](http://www.bfms.org) or 410.433-4419.

## CONTRA

### Sundays:

*The FSGW Sunday Night Contra Dances are listed on page 2.*

### Bear Dancers Sunday Contra Dance • Bear, DE *Sunday, September 14 • 2 - 5*

Come dance to the music of *The Contra Rebels*, at 208 Mariners Way, Bear, DE. Caller TBA. Suggested donation \$6, all proceeds to performers. **Info/directions:** [dancers@baltwirl.com](mailto:dancers@baltwirl.com) or 302.838.0493 x5 or [www.baltwirl.com](http://www.baltwirl.com).

**Directions:** From Baltimore/DC: I95 north to Del state line, take Exit 1 (Rte 896South); just past Denny Road turn left onto Howell School

Road. At T intersection with Red Lion Road turn left, cross RR tracks and turn right onto Kirkwood/St. George's Road for about 0.5 miles, then right onto Mariners Watch. Check web site for directions to avoid tolls.

### Wednesdays:

### BFMS Lovely Lane Contra Dance • Baltimore, MD *Wednesdays, 8 - 11 pm*

Lovely Lane Church, 2200 St. Paul St., Baltimore, MD. Sponsored by the Baltimore Folk Music Society. All dances are taught and walked through. Beginners are always welcome and are encouraged to arrive promptly at 8 pm. Nationally known musicians and callers appear regularly. Free beginners' workshops on 2nd and 4th Wednesdays at 7:30. Admission: \$6 for BFMS/FSGW Members, \$8 for Non-members. **Info:** [www.bfms.org](http://www.bfms.org) or **Greg Frock** at 410.433.4419.

### September

- 3 Various local area callers and music by **SKAM Milk**
- 10 Free New Dancer workshop at 7:30 pm Caller **Nils Fredland** with music by the **Avant Gardners**.
- 17 Caller **Seth Tepfler** with music by the **Hoover Uprights**.
- 24 Free New Dancer workshop at 7:30 pm Caller **Susan Taylor** with music by the **Gigmeisters**.

### Fridays:

### Friday Night Contra Dances • Glen Echo, MD *Fridays • 8:30 - 11:30 pm*

The Friday Night Dancers, in cooperation with the National Park Service, Montgomery County, and the Glen Echo Park Partnership for Arts and Culture, sponsor contra dances (with occasional squares and couples dances) to live music in Glen Echo Park's Bumper Car Pavilion or Spanish Ballroom (Directions, page 14). Free beginners' workshop at 7:30 pm. Dance starts at 8:30. Admission: \$6. To play for or call a dance, email [fndbooking@folkdancer.com](mailto:fndbooking@folkdancer.com). **For other information:** <http://fnd.folkdancer.com>.

### September

- 5 **Eva Murray** calls to **Hickman, Glickman, and Devine:** **Steve Hickman** (fiddle), **Marc Glickman** (piano), and **John Devine** (guitar).
- 12 **Rob Craighurst** (from Charlottesville) calls to the **Glen Echo Open Band**.
- 19 **Ted Hodapp** calls to **Terpsichore:** **Elke Baker** (fiddle), **Liz Donaldson** (piano), **Ralph Gordon** (bass).
- 26 **John Krumm** with the **Capitol Quicksteps** (a contra dance orchestra led by **Steve Hickman**).

## Dances continued

### Saturdays:

#### Second Saturday Dance • Baltimore, MD

**Saturday, September 13 • 8 - 11 pm**

Free dance workshop at 7:30 pm. Susan Taylor calls to **Some Assembly**. St. Mark's on the Hill Parish Hall, 1620 Reisterstown Road, 0.5 miles from Exit 20 South, Baltimore Beltway. Info: [www.bfms.org](http://www.bfms.org); hot-line at 410.366.0808. Admission \$8/BFMS members and affiliates \$6.

#### Third Saturday Contra Dance • Crownsville, MD

**Saturday, September 20 • 8 - 11 pm**

Greg Frock calls to the music of Jane Ziki, Ann Sidor, and Liz Donaldson. Sponsored by Annapolis Traditional Dance Society (ATDS) Free instruction at 7:30. No partner or experience required. Admission \$7 members, \$9 nonmembers. Fraternal Order of Police Hall, Rt. 178, Crownsville. Info/directions: 410.224.8488 or [contradancers.com/atds](http://contradancers.com/atds)

#### Fourth Saturday Contra Dance • Frederick, MD

**Saturday, September 27 • 8 - 11 pm**

George Marshall calls to **Wild Asparagus!** This is their only area appearance! Free beginners' workshop at 7 pm. Dance is held at the Trinity school near Harry Grove Stadium.

Info/directions: [www.contradancers.com](http://www.contradancers.com) or call Boe Walker at 301.694.6794.

#### Lancaster Contra Dance • Lancaster, PA

**Saturday, September 20 • 8pm**

Daniel Friedman calls to **Mostly Mortal Wombat**. St. John's Episcopal Church 321 W. Chestnut St. Lancaster, PA. Beginners workshop at 7 pm. Dance 8-11 pm. For information call Shane at (717) 390-7277 or email Shirley at [sam@mcc.org](mailto:sam@mcc.org). \$7/\$4

## ENGLISH COUNTRY

#### English Country Dance • BFMS Reisterstown, MD

**Mondays • 8 - 10:30 pm**

English Country Dancing is joyous, lively movement to elegant music in a friendly, informal setting. The figures are simple, and each dance is taught and walked through. New dancers are always welcome. Beginners' workshop on the first Monday promptly at 7:30 pm. Sponsored in part by the Maryland State Arts Council. Admission: \$6 for Members, \$8 for Non-members. St. Mark's on the Hill Parish Hall, 1620 Reisterstown Road, 0.5 miles from Exit 20 South, Baltimore Beltway. Info: Mike French at 410.889.3252.

### September

- 1 New dancer workshop at 7:30. Sharon McKinley calls to music by Edie Stern, Marty Taylor, and Michael Friedman.

- 8 Carl Friedman calls to music by Jeff Steinberg, Bob Garber, and Kendall Rogers.

- 15 Susan Taylor calls to music by Colleen Reed, Robbin Schaffer, and Becky Ross.

- 22 Diane Schmit calls to music by the **Geud Band of Baltimore**.

- 29 Mike Franch calls to music by Liz Donaldson, Carl Friedman, and Dawn Culbertson.

### Tuesdays:

#### English Country Dance (CDSS) • Herndon, VA 2nd and 4th Tuesdays • 7:45 pm

At Harding Hall, 730 Jackson Street. Workshop includes figures, phrasing, and style. Live music (guest musicians welcome; call in advance). \$3. No partner or experience necessary. Info: Barbara Harding 703.437.3615 or [bharding@quixnet.net](mailto:bharding@quixnet.net).

### September

- 9 Colleen Reed, flute.

- 15 Laurie Meilke, recorder.

### Wednesdays:

#### FSGW English Country Dance • Glen Echo, MD. See the listing on page 4.

### Saturdays:

#### English Country Dance (CDSS) • Herndon, VA Saturday September 20 • 8 pm

At Harding Hall, 730 Jackson Street. Caller: Barbara Harding with recorded music. No experience or partner necessary. Free. Info: Barbara Harding at 703.437.3615

#### English Country Dance • Silver Spring, MD

**Saturday, September 13 • 8 - 10:45 pm**

At Sligo Middle School, 1401 Dennis Ave. Dance to music by **Peascods Gathering**, calling by Barbara Harding and Bob Farrall. Beginners and singles welcome. \$5. Info: Carl Minkus 301.493.6281, Karla Farrall 301.577.5018.

## INTERNATIONAL

## ALPINE

#### Alpine Dancers • New Carrollton, MD

**Sunday, September 14, 4-6:30 pm**

The Alpine Dancers hold free open practice sessions at New Carrollton Municipal Center, 6016 Princess Garden Pkwy, near 495 exit 20A. New dancers welcome. Couple and trio dances from Austria, Germany, and Switzerland. Recorded and live music. Call to confirm dates, as practices may be replaced by perform-

## Dances *continued*

ances. Info/directions: Herbert and Carol Traxler at 301.577.3503 or [www.alpinedancers.org](http://www.alpinedancers.org).

### CEILI (IRISH)

#### Ceili Dance • Fairfax, VA

Comhaltas Ceoltoiri Eireann (CCE) sponsors a second Saturday dance monthly at the John Wood Center, 3730 Old Lee Hwy in Fairfax. Lesson at 7:30 pm. The Bog Wanderers Ceili Band plays from 8 to midnight. Free tea, coffee, sodabread. Softdrinks \$0.75 Admission: Members \$10, non-members \$12, 6-16 \$6; maximum family charge \$25. Info: Vickie Barr 703.521.4340.

### INTERNATIONAL

#### *Mondays:*

#### Bethesda International Folk Dancing • MD

***Mondays • 7:30 - 10 pm***

Dance on the wood floor of the Leland Community Recreation Center social hall, 4301 Willow Lane in Bethesda. No partner or experience necessary. 7:30 pm beginners teaching, 8 pm intermediate/advanced and requests. Mostly recorded but occasionally live music, parties, and workshops. On certain holidays, we meet at our alternate location, The Women's Club of Bethesda. Call for recorded message. Admission \$5. Info: Phyllis or Brandon Diamond, 301.871.8788 or [diamonddancecircle@comcast.net](mailto:diamonddancecircle@comcast.net).

#### *Tuesdays:*

#### Arlington International Folk Dancing • VA

***Tuesdays • 8 - 10 pm***

Key Elementary School, off Veitch St. between Wilson and Key near the Courthouse Road Metro, Arlington, VA \$3. Recorded music. Instruction, walk-throughs, and requests. Singles welcome and all ages or levels of expertise.

Info: 703.527.8998 or [sstulberg@earthlink.net](mailto:sstulberg@earthlink.net)

#### *Wednesdays:*

#### Columbia International Folk Dancing • MD

***Wednesdays • 8 - 10:30 pm***

Kahler Hall, Beaverkill Rd. at Harper's Farm Rd., Columbia, MD. Admission \$3. Recorded music. Beginners welcome. Teaching until 9 pm. We have parties and workshops. Info: 410.997.1613 (night), or 301.495.4642 (day).

#### *Thursdays:*

***The FSGW Glen Echo International Folkdancers are listed on page 2.***

#### Chevy Chase International Folk Dancers • DC

***Thursdays • 7:30 - 9:30 pm***

Chevy Chase Community Center, 5601 Connecticut Ave, NW, Washington DC (Connecticut Ave. at McKinley St., 2 blocks south of Chevy Chase Circle). Instruction and walk-throughs until 8:30. All levels welcome. No partner necessary. Recorded music. Leader Roland Forbes. Info: Jackie Davis 301.424.8827 or Naomi Rogers 301.438.0063.

#### Mount Vernon International Folk Dancing

• Alexandria, VA

***Thursdays • 8 - 10 pm***

Mount Vernon Unitarian Church meeting hall, 1909 Windmill Lane, Alexandria, VA. Instruction, walk-throughs, requests. No experience or partner needed. Admission \$2.50. Recorded music. Info: 703.780.2393 or [kkkrogh@aol.com](mailto:kkkrogh@aol.com).

#### *Fridays:*

#### Greenbelt International Folk Dancing • MD

***Fridays • 8:30 - 11 pm***

Focusing on dances from Eastern and Western Europe, Scandinavia, and the Mediterranean. No partner or experience necessary. Teaching from 8:30 - 9:15 pm, request dancing 9:15-11 pm. Mostly recorded music. Greenbelt Community Center Dance Studio (beautiful wooden floor!), 15 Crescent Rd., Greenbelt, MD. Admission \$5. Info: Larry Weiner 301.565.0539 or [weiner@erols.com](mailto:weiner@erols.com); John Robinson 410.715.9210; and John Bartholomew 301.565.3650.

### ISRAELI

#### Israeli Dancing • Bethesda, MD

***Mondays • 8-10 pm***

Beginners/Intermediate (everyone welcome) taught by Moshe Shem-Tov and Aviva Kutnick. Join the circle and have a great time. Recorded music. \$6 adults, \$3 students. Adat Shalom Reconstructionist Congregation, 7727 Persimmon Tree Lane.

Info: 301.871.5663 or [danceto@home.com](mailto:danceto@home.com). Directions: 301.767.3333 or [www.jrf.org/adatsmd/](http://www.jrf.org/adatsmd/)

#### Israeli Dancing • Silver Spring, MD

***Tuesdays • 7:30 - 11 pm***

Shaare Tefila Congregation, 11120 Lockwood Drive, Silver Spring (near intersection of Route 29 and New Hampshire Ave.) 8-9, Beginner/intermediate teaching. 9-11, Advanced teaching/open dancing. Admission \$5/\$2 students. Info: Helen Rubin, 703.207.1551 or [Helen@israelidance.com](mailto:Helen@israelidance.com).



---

**Dances continued**

---

**Israeli Dancing • Potomac, MD****Wednesdays • 8:15 - 11 pm**

Har Shalom Congregation, 11510 Falls Rd., Potomac (between Democracy Blvd and Montrose Rd). "Oldies" only (dances before 1990). Instruction: Beginners 8:15 - 8:45; Intermediate/Advanced, 8:45 - 9:15; Requests 9:15 - 11. Recorded music. \$5. Info: Ben Hole, 301.441.8213.

**Israeli Dancing • Greenbelt, MD****Saturday, September 13 • 8:15 - 11 pm**

Israeli "Oldies" party (dances before 1990). Recorded music, light refreshments. Greenbelt Community Center, 15 Crescent Road. \$5. Info: Ben Hole, 301.441.8213.

---

**MORRIS**

---

**Bluemont Morris • Reston, VA****Mondays • 7 - 8:30 pm**

A group of men and women who do traditional Morris dances in the spring and fall. The group is fun and the dancing is addictive and great exercise.

Info: Laura 703.845.8536. <http://monticello.avenue.org/amm/>

**Rock Creek Morris Women • Silver Spring, MD****Wednesdays at 7:30 pm**

Visit exotic locales—Toronto, Brattleboro, the Biltmore Estate! Dance aerobically to live music! Strap bells to your legs! Join a strong community that dances, plays, sings, and drinks together. Practice held at Eastern Middle School, Silver Spring.

Info: 301.270.4328; or ladyhawke20@lycos.com; or [www.uswet.com/RCMW.html](http://www.uswet.com/RCMW.html)

**Foggy Bottom Morris Men • Takoma Park, MD****Thursdays, 8 - 10 pm**

Learn and perform Morris and other English dance traditions. As long as you enjoy dance and movement you can experience the vigorous thrill of the Morris! We welcome new and slightly used dancers at practices, Beginners' nights are first Thursdays. Takoma Park Elementary School, Holly Street, near Philadelphia Ave. Info: Jud McIntire at 703.528.0588 or [maxintire@comcast.net](mailto:maxintire@comcast.net), Bill Brown at 301.270.2014 or [wmlbrown@earthlink.net](mailto:wmlbrown@earthlink.net), or website, [www.fbmm-morris.org](http://www.fbmm-morris.org)

---

**SCOTTISH**

---

**Scottish Country Dance • Bethesda, MD****Mondays • 8 - 10 pm**

Similar to English Country. No partner needed. Bring soft, flexible shoes. Taped and live music. Classes for

new and experienced dancers: NIH Building T-39 (Metro: Medical Center). Be prepared for security car search. Info: Mary Ann Williamson at 202.686.9591 or Belinda Acre at [bebac.earthlink.net](mailto:bebac.earthlink.net).

**Scottish Country Dance • Greenbelt, MD****Tuesdays • 8 - 10 pm**

Similar to English Country. No partner needed. Bring soft, flexible shoes. Taped and live music. New and experienced dancers. Greenbelt Community Center. Info: Jennifer Mayrovitz: 410.922.6369 or [rjmay-ro@erols.com](mailto:rjmay-ro@erols.com)

**Scottish Country Dance • Alexandria, VA****Wednesdays • 7:30 - 9:30 pm**

Similar to English Country. No partner needed. Bring soft, flexible shoes. Taped and live music. Jefferson-Houston High School, 1501 Cameron St., Alexandria, VA. Be sure to confirm class date (school events may pre-empt). Info: Mel or Ellie Briscoe at 703.461.7383 or [mail@briscoe.com](mailto:mail@briscoe.com).

**Scottish Country Dance • Silver Spring, MD****Alternate Fridays • 7:30 - 9:30 pm**

Montgomery Blair HS, University Blvd at Colesville Rd. Similar to English Country. No partner needed. Bring soft, flexible shoes. Taped and live music. Lots of dance events, weekends, etc. Classes for new and experienced dancers: Info: Ralph Stoddard at 301.649.5666 or [caberfei@aol.com](mailto:caberfei@aol.com).

---

**SQUARE**

---

**Taylor Made Squares • Silver Spring, MD****Tuesdays • 8 - 9:30**

Betsy Taylor calls squares to recorded music at the Long Branch Community Center, Piney Branch Rd., Silver Spring, MD. Wood floor. No experience or partner necessary. Info: 301.589.4868.

---

**SWING**

---

**Swing Dance • Glen Echo, MD****September 6 • 8 to midnight**

Music by Daryl Davis; website: <http://www.daryl-davis.com/> Instructors: Marc and Ellen; Website: <http://www.flyingfeet.org>. Washington Swing Dance Committee, in cooperation with the National Park Service, Montgomery County, and the Glen Echo Park Partnership for Arts and Culture. Admission \$12 No partner or experience necessary. All ages welcome. Smoke- and alcohol-free venue, Spanish Ballroom at Glen Echo Park (Directions, page 14). Dress is casual. Bring something to drink (no alcohol permitted in the

## Dances continued

Park). Introductory swing dance lesson, 8-9 pm. Dancing 9-midnight. Volunteer for an hour and get in free! Call Rick Carter, 202.726.3972. **Additional info:** [www.wsdcc.org](http://www.wsdcc.org), [dcswnigs@starpower.net](mailto:dcswnigs@starpower.net), or 301.340.9732.

### WALTZ / BALLROOM / SOCIAL

#### Sundays:

#### Sunday Afternoon Waltz • Glen Echo, MD September 7 & 21 • 3-6 pm

At 3 pm there is a half hour introductory Waltz workshop, followed by social dancing until 6 pm. Admission \$7 including lesson. For late breaking information, call Donna Barker at 703-978-0375 or visit our website at <http://www.dancedc.com>. In the Spanish Ballroom, Glen Echo Park, MD (directions on page 14).

#### September

7 Alexander's Reel Tyme Band

21 Terpsichore

#### Fall Dance with the Continentals Band

##### • Bethesda, MD

#### Saturday, September 6 • 8 pm to midnight

At the Bethesda Women's Club, 5500 Sonoma Road, Bethesda, sponsored by the Arminius Social Club. The European-style dances feature live music with lots of polkas and waltzes and a smattering of other ballroom dances: swing, foxtrot, cha-cha, samba, Rhinelander, mambo, rock 'n' roll. Admission of \$20 per person includes beverages and snack. **Info:** 301.559.1944 Gerhard Meinzer; 301.649.3212 Peter Krusen; 410.635.2435 Joan Stoneberger.



## Dance Classes Class listings may be submitted by FSGW members only.

### CLOGGING

#### Clogging Classes • VA

Clogging classes at the Audrey Moore recreation center just off the Beltway in Virginia. You are always welcome. Fall classes start September 14. Appalachian clogging is the traditional American step dance brought to Appalachia and modified by Irish and Scottish immigrants. Learn the basic steps and a routine and then perform with the *Patchwork Dancers*. **Info:** Jim Maxwell, 703.503.9260, 202.401.3571, or [jpmawell@yahoo.com](mailto:jpmawell@yahoo.com) or <http://home.earthlink.net/~jimmaxwell>.

### IRISH

#### Irish Country Set & Ceili Dance Classes

##### • Glen Echo, MD

#### Wednesdays starting September 17

Learn the traditional dances of Ireland. No partner or experience needed.

Beginners 7pm/Advanced 8:15 to 9:30pm. Instructors for the 13-week session are **Dick DeFreyre** and **Ann Marie Breheny**. Recorded music. Sponsored by the Glen Echo Partnership for Arts and Culture and the National Park Service. **Questions? Call 301.294.3568 or email at [rdefreyre@aol.com](mailto:rdefreyre@aol.com)**. In the Bumper Car Pavilion or Spanish Ballroom at Glen Echo Park.

#### Thursdays starting September 11 • Rockville, MD

At the Frost Center, 4915 Aspen Hill Road near Viers Mill Road. Cost: \$30 for the 10-week session. Beginners at 7:30pm/Advanced 8 to 9:30pm. Instructor is **Paul O'Donnell**. Recorded music. Sponsored by the Greater Washington Ceili Club.

**Questions? Call 301.649.6410 or email at [irishgwcc@aol.com](mailto:irishgwcc@aol.com). Info at <http://members.aol.com/pfod/irishdance>.**

### SCANDINAVIAN

#### Beginning Scandinavian Dancing

##### • NIH, Bethesda, MD

#### September 11 and 25 • 8-9:30 pm

Learn hambo, schottish, waltz, zwiefacher, and other couple turning dances. Air-conditioned! Singles, couples, beginners, and advanced dancers welcome. Mostly recorded, occasionally live, music. Come when you can; class is continuous, and some hambo is done every time. Wear smooth-soled shoes for turning. \$5. **Info:** Lisa Brooks at 301.654.7667, 301.435.5544, or [lisa@HamboDC.org](mailto:lisa@HamboDC.org) <<mailto:lisa@HamboDC.org>> **DIRECTIONS:** Enter NIH at Wisconsin and South, for vehicle inspection (have ID available). Go to the south center of NIH and park in the NIH permit parking, next to Building T-39. Alternatively: park on Battery Lane and walk (5 minutes) to Building T-39 or walk (8 minutes) from the Medical Center Metro stop. See NEW map at [www.HamboDC.org](http://www.HamboDC.org) or on a flyer.

## Dance Classes *continued*

### SWING

#### Beginning Swing • Glen Echo, MD

**Thursdays, September 4 - 25 • 8 - 9pm**

Instructors: **Donna Barker** and **Mike Marcotte**. Learn the basic footwork and technique for leading and following lots of swing moves. One-hour lesson, four-week course. \$40 per person; no partner required. At the Spanish Ballroom, Glen Echo Park. (Directions, page 14). Preregistration not necessary but please arrive 10 minutes early on the first night to register at the door.

**Info: Donna Barker at 703.978.0375, or <http://www.DanceDC.com> or [donna@dancedc.com](mailto:donna@dancedc.com)**

#### Beginning/Intermediate Swing • Vienna, VA

**Wednesdays, 7:30 - 11pm**

PSDC Room, 146 East Maple Avenue. Instructor: **Donna Barker**. Walk-in classes every Wednesday. Beginning/intermediate swing from 7:30-8:30, followed by DJ'd social dancing until 11. Lesson and dance: \$10 PSDC Members, \$12 Non-Members. Dance only: \$6 PSDC Members, \$8 Non-Members. Drinks included.

**Info: Donna Barker at 703.978.0375, or <http://www.DanceDC.com> or [donna@dancedc.com](mailto:donna@dancedc.com)**

#### Swing/Lindy • Arlington, VA

**Sundays, 7-10:30 pm**

Lyon Village Community House, Lee Hwy and No. Highland, Arlington, VA. Instructors: **Donna Barker** and **Mike Marcotte**. Walk-in lessons and dancing every Sunday.

7-8pm/ Lindy: Brush up your whips & learn cool variations.

8-8:45pm/Int/Adv Swing/Lindy Lesson (different moves each week)

8:45-10:30pm/DJ'd social dancing

Lessons and dance: \$10 PSDC Members; \$12 Non-members. Dance only: \$3 PSDC Members; \$5 Non-Members Refreshments included.

**Info: Donna Barker at 703.978.0375, or <http://www.DanceDC.com> or [donna@dancedc.com](mailto:donna@dancedc.com)**

### SOCIAL

#### Slow Blues Dancing • Glen Echo, MD

**Thursdays, September 4 - 25 • 9 - 10pm**

Instructors: **Donna Barker** and **Mike Marcotte**. Learn how to dance those SLOW bluesy numbers instead of standing by the side waiting for the next swing dance. One-hour lesson, four-week course. \$40 per person; no partner required. At the Spanish Ballroom at Glen Echo Park (Directions, page 14). Pre-registration not necessary but please arrive 10 minutes early on the first night to register at the door..

**Info: Donna Barker at 703.978.0375, or <http://www.DanceDC.com> or [donna@dancedc.com](mailto:donna@dancedc.com)**

### WALTZ

#### Beginning Waltz • Glen Echo, MD

**Thursdays, September 4- 25 • 7-8 pm**

Instructors: **Donna Barker** and **Mike Marcotte**. You will first learn the basics of this very popular dance and then move on to some fancy moves. One-hour lesson, four-week course. \$40/person; no partner required. Spanish Ballroom, Glen Echo Park (Directions, page 14). Pre-registration not necessary, but please arrive 10 minutes early on the first night to register at the door.

**Info: Donna Barker at 703.978.0375, or <http://www.DanceDC.com> or [donna@dancedc.com](mailto:donna@dancedc.com)**

### WALTZ, POLKA, SCHOTTISCHE

#### Viennese Waltz and/or /Polka & Schottische Lessons • Washington, D.C

**November 2, 9, 16, 23 • Afternoons**

Series of four lessons taught by **Herbert and Carol Traxler** at Meridian House, 1630 Crescent Place, N.W., Washington, DC. Sponsored by T.H.I.S. (The Hospitality and Information Service at Meridian House). Cost per person \$50 for one lesson series and \$75 for both. Individuals and couples welcome. No prior dance experience required. **Info on registration and space available: Mrs. Bocek at 703.528.0487. Info: Herbert & Carol Traxler 301.577.3503; [www.viennesewaltz.org/meridian/](http://www.viennesewaltz.org/meridian/)**

## ATTENTION DANCERS!

If you plan to go to the FSGW Sunday Night Contra Dances -- please check our website or Hotline for the exact location of the dance at Glen Echo Park .

It will occasionally be in the Bumper Car Pavilion,  
as it will be on **Sunday, August 31st, Labor Day Weekend.**

# 35 Years Ago This Month

## — September 1968 —

— Joe Hickerson —

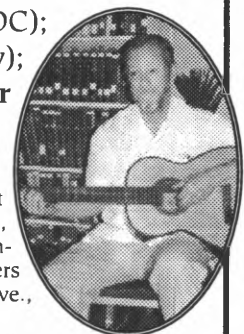
On September 14 a Bring-your-own Picnic and Party was scheduled for FSGW members in North Arlington. On September 25 FSGW presented "Abe Lincoln and the Civil War: A Program of Folk Music and Dance Depicting Oral History and Popular Sentiment" at Ford's Theatre for the annual convention of the American Association of State and Local History (AASLH). Scheduled performers were **Gene Anderson, Bruce Buckley, Ralph Case Square Dancers** with **Blackie Morgan, Alice Foster & Hazel Dickens, Joe Hickerson** (who also organized and emceed the program), **John Jackson, Mike Seeger, and Andy Wallace**. On September 27 the following performed at an AASLH reception at the National Portrait Gallery: **Jonathan Eberhart, Ailene Goodman, Joe Hickerson, Gus Meade, Scott Odell, Helen Schneyer, and Andy Wallace**. On September 28, a Fall Folk Sampler took place at the Washington Ethical Society with **Joe Hickerson, John Jackson, and the Ring Shouters (Jonathan Eberhart, Mike Rivers, and Andy Wallace)**. The September issue (vol. 5, no.1) of the Newsletter announced these and future FSGW events, a Sacred Harp Shape Note Sing and Potluck Supper on September 15, and the issuance of two LPs from the 1967 Fox Hollow Folk Festival. The minutes of the September 4 board meeting reported 242 members and announced a September 6 farewell party for **Gerry Parsons** at the Hickersons in Accokeek.

The following were also scheduled to appear in the area this month: **Ravi Shankar** (Merriweather Post Pavilion); **Osborne Brothers** (Dairyland Restaurant); **Benny & Vallie Cain & The Country Clan** (Maple Restaurant); **Country Gentlemen** (Shamrock); **Currie Family** (Bonanza Sirloin Pit); **Bill Emerson, Cliff Waldron & The Lee Highway Boys** (Red Fox Inn; Idle Hour Inn); **Bob Goff & The Bluegrass Buddies** (Plaza 7 Restaurant); **Jim & Dean & The Bluegrass Valley Boys** (Moose Lodge); **Page Valley Boys** (300 Club; Red Fox Inn); **Francis Tinsman & The Potomac Valley Boys** (Sterling Ruritan Club). These events were listed in issues of *Bluegrass Unlimited* and *Washington Star*.

Meanwhile, the Library of Congress Archive of Folk Song reported the following researchers and visitors: **Israel Adler** (Jewish National University Library); **Esther Birdsall** (University of Maryland); **Norm and Ann Cohen** (John Edwards Memorial Foundation); **Michael Cooney** ("here & there"); **Harold Felton** (NYC); **Rich Kirby** (Yale University); **Barbara Krader** (DC); **Lynwood Montell** (Campbellsville College); **Willard Rhodes** (Columbia University); **Charles Seeger** (UCLA); **T. Temple Tuttle** (University of Maryland); **Don Yoder** (University of Pennsylvania).



**Joe Hickerson**, head of the Archive of Folk Culture at the Library of Congress until his retirement in 1998, is available to sing and lecture about folk music. A founding member of FSGW in 1964, he has served as the Society's President, Program Chair and Book Review Editor, and now contributes this monthly column describing FSGW and other area events 35 years ago. If any readers have relevant flyers, clippings, etc. from 1968-69, please mail copies to Joe at 43 Philadelphia Ave., Takoma Park, MD 20912 for possible inclusion in this column.



## FSGW Gift Memberships

Does FSGW mean For Special Gift Wrecipients? (Sorry!) If you'd like to make sure that friends and family members know all about the wonderful music and dance and storytelling in the greater Washington area, consider giving a gift membership. We'll send a congratulatory message and membership card — which means at least nine free events during the year for your lucky donee. Use the membership form on the back page, but please mark it "Gift Membership."

**C L A S S I F I E D S**

Editorial Policy for Classified Ads: Only FSGW members may place an ad. Ads may be up to 50 words, including telephone number with area code. There is a limit of two ads per member per issue. Ads MUST be relevant to FSGW's stated purpose (see Editorial Policy). Charges: Commercial business: \$8 for 10 words; Non-commercial and individual \$4 for 10 words; 25% discount for any single ad placed in 11 consecutive issues (one year) and paid in advance. LOST & FOUND ads are FREE. Ad copy with check made payable to FSGW must be received by the newsletter deadline. Mail to the Editor: **Lesley Frank; 11302 Odell Farms Court, Beltsville, MD 20705-4106.**

**CD MANUFACTURING BY OASIS®.** Honest pricing, personal service. Free radio promotion nationwide on OasisAcoustic™ sample CDs. **(888)BY-OASIS, www.oasisCD.com, or info@oasisCD.com.**

**CD Booklets, labels, J-Cards Design** — Also books, magazines, brochures Designing YOUR ideas! — **Jennifer Woods GRAPHICS 301.587.7174**

**LIVE SOUND REINFORCEMENT.** Concert, dances, conferences, weddings, mitzvahs. Small to large systems, with or without sound engineer from sound check to encore. Folk, ethnic, blues, acoustics, our specialties. **Contact David Eisner at House of Musical Traditions 301.270.9090.** Gobs of experience, references on request.

**OLD GERMAN VIOLIN.** Full size with new pegs and bridge. One-piece back. Nice tone. \$750. **301.982.4066.**

**SLAVEYA**, a women's vocal ensemble devoted to traditional Eastern European music, is seeking new members (all voices). For auditions or further information, call **Thea Austen (202.707.1743)** or **Tatiana Sarbinska (301.865.2159).**

**AFFORDABLE, METRO-ACCESSIBLE HOUSING NEEDED** by U. Utah Phillips' daughter, Morrigan, mid-Sept. through mid-Dec. for activist internship with Jubilee USA. Group house fine. Call **530-265-2855** or e-mail **morriganp@hotmail.com.**

**FSGW Newsletter Editorial Policy**

The Folklore Society of Greater Washington endeavors to print copy it deems relevant to its membership and purpose as stated in its by-laws;

*"The main purpose of the Society is to further the understanding, investigation, appreciation, and performance of the traditional folk music and folklore of the American people."*

- All copy (except classified ads) must be submitted by e-mail to [newsletter@fsgw.org](mailto:newsletter@fsgw.org) in text format in the body of the e-mail by the 10th of the preceding month.
- Please review comparable entries from the Newsletter and edit accordingly.
- The Editor reserves the right to edit or omit copy as necessary.

Editor: **Lesley Frank** • [newsletter@fsgw.org](mailto:newsletter@fsgw.org) • **301.595.8806**

Design & Layout: **Jennifer Woods GRAPHICS**  
Silver Spring, MD • **301.587.7174**

**FSGW Board 2003-2004**

<b>Anne Sergeant, president</b>	<a href="mailto:president@fsgw.org">president@fsgw.org</a>	<b>301.270.4553</b>
<b>Kathy Westra, vice-president</b>	<a href="mailto:vicepresident@fsgw.org">vicepresident@fsgw.org</a>	<b>301.587.3807</b>
<b>Treasurer - Position OPEN</b>		
<b>April Grastorf, secretary</b>	<a href="mailto:secretary@fsgw.org">secretary@fsgw.org</a>	<b>703.242.273</b>
<b>Charlie Baum, program</b>	<a href="mailto:program@fsgw.org">program@fsgw.org</a>	<b>301.587.2286</b>
<b>Betsy Platt, special events</b>	<a href="mailto:special@fsgw.org">special@fsgw.org</a>	<b>301.320.7099</b>
<b>Janine Smith, dance</b>	<a href="mailto:dance@fsgw.org">dance@fsgw.org</a>	<b>301.926.9142</b>
<b>Lynn Pastore, membership</b>	<a href="mailto:members@fsgw.org">members@fsgw.org</a>	<b>301.577.0745</b>
<b>Lesley Frank, publications</b>	<a href="mailto:newsletter@fsgw.org">newsletter@fsgw.org</a>	<b>301.595.8806</b>
<b>Susan Clark, publicity</b>	<a href="mailto:publicity@fsgw.org">publicity@fsgw.org</a>	<b>301.565.5126</b>
<b>Jean McAulay, at-large</b>	<a href="mailto:board1@fsgw.org">board1@fsgw.org</a>	<b>301.408.2381</b>
<b>Holly Steussy, at-large</b>	<a href="mailto:board2@fsgw.org">board2@fsgw.org</a>	<b>703.403.8813</b>
<b>Dennis Cook, past-president</b>	<a href="mailto:pastpresident@fsgw.org">pastpresident@fsgw.org</a>	<b>301.776.4314</b>
<b>Jim Cole, past-treasurer</b>	<a href="mailto:pasttreasurer@fsgw.org">pasttreasurer@fsgw.org</a>	<b>703.356.9678</b>

**FSGW Board Meetings**

**Tuesday, August 26 &  
September 23 • 8 pm**

The monthly FSGW board meeting will be held in Classroom #202 at Glen Echo Park, Glen Echo MD. All FSGW members may attend. If you wish the Board to consider a particular matter, please contact the appropriate board member or **Anne Sergeant, FSGW President, at 301.270.4553.**





The  
**Folklore Society  
of Greater Washington**

6009 84th Ave. ❖ New Carrollton, MD 20784  
www.fsgw.org

PRESORTED  
FIRST CLASS MAIL  
US POSTAGE PAID  
ROCKVILLE, MD  
PERMIT #4297

Printed on recycled paper.

**Address Service Requested.**



**FIRST CLASS**

Carly Gewirz I1571 210001  
PO Box 217  
Clifton, VA 20124-0217

The Folklore Society of Greater Washington is a not-for-profit [Section 501(C)(3) of the IRS code] institution and we encourage the financial contributions of our members. Contributions in excess of annual dues are welcome and may be tax deductible. Please mail your gift to FSGW, 6009 84th Ave., New Carrollton, MD 20784. Subscriptions to the Newsletter only are available outside the Greater Washington Metro area.

**FSGW IS DEDICATED TO PRESERVING AND  
PROMOTING TRADITIONAL FOLK ARTS IN THE  
WASHINGTON, DC METROPOLITAN AREA.  
MEMBERSHIP IS OPEN TO ALL WHO SUPPORT THESE  
GOALS UPON PAYMENT OF ANNUAL DUES.**

## FSGW Membership Form

☐ Renewal    ☐ New Address    ☐ New Membership\*

	<u>Individual</u>	<u>Family</u>
1 year	<input type="checkbox"/> \$28	<input type="checkbox"/> \$38
2 years	<input type="checkbox"/> \$51	<input type="checkbox"/> \$72
3 years	<input type="checkbox"/> \$75	<input type="checkbox"/> \$107
LIFE	<input type="checkbox"/> \$460	<input type="checkbox"/> \$700
Student	<input type="checkbox"/> \$20	

☐ **Newsletter Subscription ONLY \$20**

Available ONLY to those living OUTSIDE the Greater Washington metro area. Newsletter Subscription ONLY carries NO membership privileges.

\* If you are a new member, where did you get this newsletter?

- ☐ at Glen Echo Park (which event? \_\_\_\_\_)  
☐ Another FSGW event (which one? \_\_\_\_\_)  
☐ From a friend who is a member ☐ At my public library  
☐ Other \_\_\_\_\_

☐ I would like to help FSGW. Comments/Suggestions: \_\_\_\_\_

Name(s) \_\_\_\_\_

Address \_\_\_\_\_

City \_\_\_\_\_ State \_\_\_\_\_ Zip \_\_\_\_\_

Phone(s) \_\_\_\_\_

H: (\_\_\_\_) \_\_\_\_\_ W: (\_\_\_\_) \_\_\_\_\_

E-mail: \_\_\_\_\_

May we list you in our Membership Directory?  
(FSGW does not provide mailing lists to any other organizations.)

- ☐ Yes    ☐ No  
☐ Yes, but please do not list my:  
☐ address    ☐ home phone number    ☐ work phone    ☐ e-mail



Send form and check made payable to FSGW to:

**FSGW Membership** ❖ 6009 84th Ave. New Carrollton, MD 20784

FSGW 8/03

V48 nlp A

## Pre-Festival Concert

Featuring Magpie  
w/ Franklin Taggart opening

Saturday, Sept. 6, 7:30 p.m.

Takoma Park Presbyterian Church

\$12, \$10 Focus member, Info: 202-607-6156

Juried crafts fair

Dozens of performers

International foods

Community organization tables

Loads of family fun

Many performances will be  
sign language interpreted

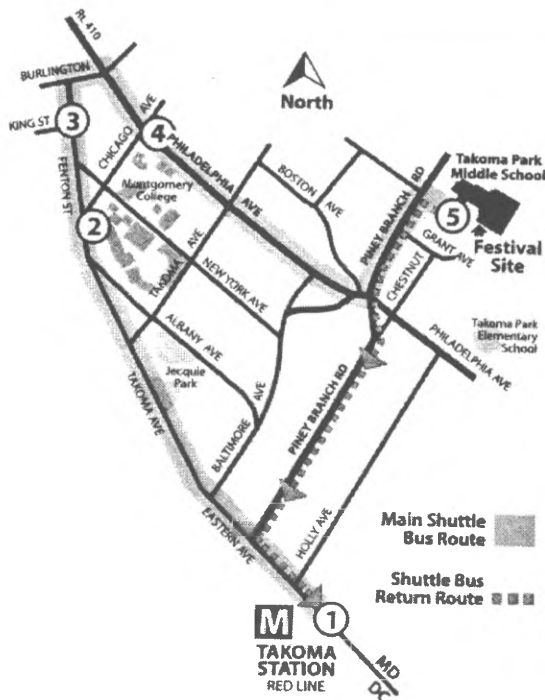
Handicapped parking available



8 Stages  
of Music  
& Dance

**Sunday, September 7, 2003**

**11 am — 6:30 pm, Rain or Shine!**



**FREE Parking at Montgomery College.  
Hop on the Free Festival Shuttle Bus at  
the College or the Takoma Metro Station.**

Takoma Park Folk Festival, Inc. is a Maryland nonprofit organization with 501(c)(3) status. TPFF, Inc. has received grants from the Arts and Humanities Council of Montgomery County and the Maryland State Arts Council.

**At Takoma Park Middle School**  
7611 Piney Branch Rd, Takoma Park, MD

**Free — No Admission Fee**

Festival proceeds benefit local youth programs

For the latest information visit our website:

**[www.tpff.org](http://www.tpff.org)**

or call 301-589-3717 or email [info@tpff.org](mailto:info@tpff.org)

**Many thanks to our sponsors and supporters:**

- City of Takoma Park
- Chevy Chase Bank
- Class Acts Arts
- Columbia Union College (Grove Stage)
- Copy Connection
- Focus
- Folklore Society of Greater Washington
- Long & Foster / Takoma Park Agents R. Kimball & D. Maplesden (Dance Stage)
- Sign Language Associates
- Starpower Communications LLC (Abbott Stage)
- Strayer University, Inc.
- Takoma Park Street Festival (World Stage)
- Takoma Voice, Community Journal & Resource
- Washington Adventist Hospital
- The Washington Post (Field Stage)
- WETA FM 90.9

# Takoma Park Folk Festival Program Guide

Sunday, September 7, 2003 • 11am — 6:30pm, *Rain or Shine!*

	Field	Grove	Abbott	World	Dance	Grassy Nook	7th Heaven	Jamboree Court
	Sponsor: The Washington Post	Sponsor: Columbia Union College	Sponsor: Starpower Communications LLP	Sponsor: Takoma Park Street Festival	Sponsor: Long & Foster Takoma Park			
11am	<b>Jennifer Cutting's Ocean Orchestra</b> Celestial celtic joy and mystery music for ancient moderns	<b>Jesse Palidofsky Group</b> 🦋 Intelligent, soulful originals seasoned with the unexpected twist of fate	<b>Orange Line Special</b> Roots music from Bluegrass City—Washington, DC	<b>Los Quetzales Mexican Dance Ensemble</b> Colorful, lively and energetic dances	<b>Free Waltz &amp; Couple Dancing</b> Music: <b>Peascods Gathering</b> Start your day with a three-quarter beat	<b>BanjerDan</b> 🦋 Wow! Banjos ROCK!	<b>Harp Workshop</b> Medieval to modern Celtic harp and song — <b>Cynthia Cathcart and Ellen James</b>	<b>11:45 Rhythm Workers Union</b> Activist drumming group using rhythm and song to promote peace, justice, and unity
12pm	<b>Beth-Allison &amp; the Well-Strung Boys</b> Original Americana	<b>Cerulean Groove</b> Acoustic trio combining elements of folk, rock and blues  <b>12:30 Alicia Deeny Band</b>	<b>A Bunch of Ballads</b> Four great singers of story songs: <b>Judy Cook</b> <b>Lisa Null</b> <b>Chris Noyes</b> <b>George Stephens</b>	<b>Rachel Cross &amp; Friends</b> High-energy performances, positive vibe and powerful voice	<b>East European Folk Dance</b> Leader: <b>Jamie Pjatt</b> Music: <b>Sarenica</b> Tamburitza music for kolos and line dances	<b>Renée Brachfeld</b> 🦋 Juggling storyteller	<b>Beatles Tribute</b> 🦋 Yesterday and Today — <b>David A. Alberding</b> <b>Verlette Simon</b> <b>Cletus Kennelly</b> <b>Lori Kelley</b> <b>Gina DeSimone</b> <b>Mary Sue Twohy</b>	<b>12:45 Wu Shen Tao Health &amp; Martial Arts Center</b> Tai Chi and Kung Fu demo
1pm	<b>The Dreamsicles</b> <b>Tom Prasada-Rao and Cary Cooper</b> — The funky side of folk 🦋	Blend of Latin ballads, American jazz and folk-rock originals  <b>1:30 Laurie Rose Griffith &amp; Peter Mealy</b> Wife-and-husband acoustic duo with diverse stylistic sensibilities	<b>Vocal Styles Showcase</b> <b>LiPing Hudson</b> (Taiwanese) <b>Karma Gyaltzen</b> (Tibetan) <b>Tatiana Sarbinska</b> (Bulgarian)	<b>Somapa Thai Dance Company</b> Classical and folk dance of Thailand  <b>1:30 Shawkat Sayyad</b> Middle Eastern oud player	<b>Tango</b> Instructors: <b>Steve Gester and Nancy Pineles</b> Music: <b>Marc Glickman</b> <b>Wendy Morrison</b> <b>Jonah Blaustein</b> <b>Rich Seidel</b> Learn to lead and follow this sensuous dance	<b>Sue Trainor</b> 🦋 Sing-along, dance-along, play-along with Sue!	<b>1:30 Donal Leace &amp; Friends</b> 🦋 Local troubadour since 1960, playing acoustic folk-roots	<b>1:15 Foggy Bottom Morris Men</b> Traditional Morris Dancing  <b>1:45 International Capoeira-Angola Foundation</b> Afro-Brazilian martial arts through movement, dance and music
2pm	<b>Pat Humphries &amp; Sandy O.</b> 🦋 Activist musicians with thinking music about real people	<b>Lisa Moscatiello &amp; Dave Chappell</b> Driving, melodic folk rock	<b>Lea Coryell &amp; Ralph Lee Smith</b> 🦋 Old songs and tunes played on traditional banjos and dulcimers	<b>MiraMar Klezmers</b> Authentic, heartfelt, uplifting Klezmer music	<b>Scandinavian</b> Instructors: <b>Ross Schipper and Chris Kalke</b> Music: <b>Loretta Kelley</b> Learn to dance like a Norwegian	<b>Bill Jenkins</b> Play in a world music band with Bill and his instruments!	<b>2:30 Drum For Joy! with Jaqui MacMillan</b> Come ready to rattle and rompl	<b>2:30 Double-Dutch Demo</b> Takoma Park's own amazing youngsters
3pm	<b>Reverb</b> 🦋 Five-member gospel, folk, R&B, a cappella vocal group	<b>The Unusual Suspects</b> An unusual blend of folk, country and character  <b>3:30 Luke &amp; Daniel Brindley</b> Instrumental odysseys and poetic visions	<b>Music from the Library of Congress Archive of Folk Culture</b> <b>Peggy Bulger</b> <b>Jennifer Cutting</b> <b>Joe Hickerson</b> <b>Andy Wallace</b>	<b>Irish Fire</b> Spirited music of the Emerald Isle from area favorites — <b>Grace Griffith</b> <b>Dominick Murray</b> <b>Dave Abe</b>	<b>Clogging</b> Leader: <b>Jim Maxwell</b> Music: <b>JumpStart</b> Demo: <b>Members of Patchwork Cloggers</b>	<b>Cantaré</b> 🦋 ¡FIESTA! A Musical Journey through Latin America	<b>3:00 Frank Cassel The Banjo Man</b> Lively and engaging folk-bluegrass performance  <b>3:30 Native American Flute</b> Blend of Native American flute stories and songs with Brazilian percussion — <b>Ron Warren and friends</b>	<b>3:45 Morris Dancers</b> Traditional Morris dancing
4pm	<b>Kim &amp; Reggie Harris</b> Their passion and commitment will inspire you	<b>Zeala</b> 🦋 Female blend of funk, folk, bluegrass and rock	<b>Mountain Dulcimers</b> The old and the new on Appalachian lap dulcimers: <b>Ralph Lee Smith</b> and <b>Christina Muir</b>	<b>Arte Flamenco</b> Authentic flamenco from the south of Spain	<b>Contra Dance</b> Caller: <b>Susan Taylor</b> Music: <b>TuneFish</b> Great tunes, driving rhythms — come dance!	<b>Rick &amp; Audrey</b> Contagious fun, sweet harmonies, and musical surprises!	<b>4:30 Funniest Songs We Know</b> 🦋	<b>4:15 David Shneyer</b> Shofar-blowing workshop
5pm	<b>Lulu's Fate</b> From Django jazz through Trinidad to American string band music	<b>We're About 9</b> 🦋 Huge harmonies, engaging show, striking musicianship, quirky smart songs and youthful charm	<b>The Jones Family</b> Family-spun traditional and contemporary music — with attitude	<b>Cabaret Sauvignon</b> From cabaret to classical or a contra	<b>Cajun</b> Leader: <b>Tom Hall</b> Music: <b>Squeeze Bayou</b> Spicy two steps, haunting waltzes from Louisiana —Until 6:30 p.m.	<b>Namu Doris Lwanga</b> Ugandan stories, dances and songs	Local favorites twist and charm— <b>Steve Key</b> <b>Sue Trainor</b> <b>Zoe Mulford</b> <b>Ed Alkalay</b>	<b>5:00 Open Jam</b> With <b>Kathy Kerr</b> Come play!

**Roamers and Rovers:** Throughout the festival, artists will perform around the grounds. Look for: **Frank Cassel, The Banjo Man** — for children of all ages, and **Leandra FINDER** (Dreamfinders) Balloon artist and clown

🦋 This symbol denotes Festival performances that will be signed for the deaf

**69**

**Roamers and Rovers:** Throughout the festival, artists will perform around the grounds. Look for: **Frank Cassel, The Banjo Man** — for children of all ages, and **Leandra Finder** (Dreamfinders) Balloon artist and clown

This symbol denotes Festival performances that will be signed for the deaf