



The  
Folklore  
Society of  
Greater  
Washington

# NEWSLETTER

ISSN 0015-5950

Roxanne Watts,  
editor

FSGW Special Event

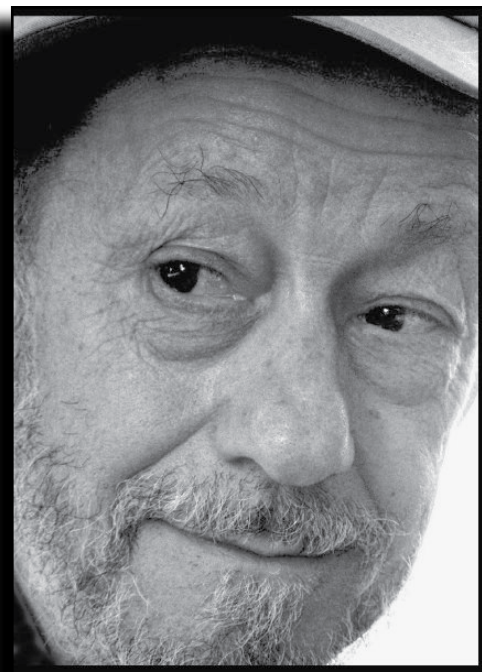
The Folksinger's  
Folksinger Turns 75!

Joe  
Hickerson

Birthday

Concert / Party

Sunday November 28 • 3 p.m.



WES Auditorium, DC

Local folk legend and FSGW founding member, **Joe Hickerson** will celebrate his 75<sup>th</sup> birthday (which actually occurred on October 20) with a special **afternoon** concert for FSGW at 3 p.m. on Sunday, November 28, at the Washington Ethical Society auditorium (where FSGW has held concerts since 1968). Joe, who **Pete Seeger** calls “a great songleader,” and **Tom Paxton** calls “a hero to me,” has a wide-ranging repertoire of songs and ballads that includes occupational and labor songs, children’s songs, humorous songs and parodies, Irish-American songs, sea songs, religious songs, and chorus songs, which he sings with guitar and unaccompanied. Although not known as a songwriter, **Hickerson** is the co-author with **Pete Seeger** of “Where Have All the Flowers Gone.”

Joe likes to refer to himself a “vintage pre-plugged paleo-acoustic folksinger.” He has been performing for more than 50 years, and is known for his ability to find wonderful songs and share them with his audiences. His concerts always involve opportunities not just to listen, but also to join in on lots of choruses. **Sandy Paton**, the late founder of Folk-Legacy Records, said: “Quite simply, Joe just knows how to sing a folk song.... He has a way of opening up a song for a whole group of people, making it available for all to share.” Joe has three solo recordings on the Folk-Legacy label, and is featured as a song-leader on many other recordings on the Folk-Legacy, Folkways, and National Geographic labels, among others.

In addition to his performing career, Joe is a respected folklorist, ethnomusicologist, archivist, and librarian, who served for 35 years as Librarian and Director of the Archive of Folk Culture at the Library of Congress in Washington, D.C., before retiring in 1998. For many years, Joe has written “The Songfinder” column for *Sing Out!* Magazine, where he helps the magazine’s readers locate folksong words, sources, and recordings—and, true to his library training, gently teaches do-it-yourself research skills to questioners.

Concert admission is \$15 for FSGW members, \$20 for nonmembers. Directions on page 23.

# FSGW Sunday Night Dances

at Glen Echo Park, MD  
(Directions, page 23)

**Contras & Squares • 7:30-10:30 pm**

**Introductory lesson every Sunday from 7-7:30 pm**



Join us for an evening of dancing at Glen Echo Park. Every Sunday FSGW (in cooperation with the National Park Service, Montgomery County, and the Glen Echo Park Partnership for Arts and Culture) presents contras and squares danced to live music by fabulous bands with entertaining callers. Experienced and new dancers welcome; no partner needed. **Welcome/Orientation session every Sunday at 7 pm. Come early for an introduction to the basic moves, and check out YouTube instructional videos as well.** Dances often become more challenging as the evening progresses. This month, FSGW Sunday dances are in the Spanish Ballroom, so bring water or a sports drink, and dress appropriately in layers. Smooth soled shoes are kindest on your knees and ankles when turning. Info: **Penelope Weinberger**, [dance@fsgw.org](mailto:dance@fsgw.org).

**Admission: \$9 for FSGW, BFMS, CDSS, and ATDS Members.  
\$12 for the general public**

## October

- 31 **Special Halloween Costume Dance** –Susan Petrick calls to the dynamic contra band, *The OpporTunists*. All the way from the San Francisco Bay Area, they are **Alan Snyder** on fiddle and guitar, **Eric Hoffman** on guitar, fiddle, mandolin, and percussion, and **Topher Gayle** on energy bass, mandolin, 5-string *Mandonator*, guitar and tenor banjo. Don't miss the chance to hear them!



## November

- 7 **Tom Calwell** and **Myra Hirschberg** call to *Footloose*, composed of the incomparable **Alexander Mitchell** on fiddle, **David DiGiuseppe** on accordion, **Pete Campbell** on keyboard, and **Jim Roberts** on percussion.
- 14 **Bill Olson** calls with the *Ti Acadie*— Tunesmith **Pam Weeks** plays fiddle and dulcimer, **Jim Joseph** has a blast on three button accordions, and **Bill Olson** takes care of the “bottom end” usually on guitar.
- 21 *Notorious*. The name couldn't be more apt for this pair— **Eden MacAdam-Somer** on fiddle, and **Larry Unger**. **Will Mentor** calls.
- 28 **Michael Barraclough** calls with *Hammer and String*. **Rhys Jones**, **Cleek Schrey** and **Joel Wennerstrom**, all virtuosos explore musical connections between Appalachia and Ireland.



### Techno Contra Dancing is On the Way

The first dance will be held **Tuesday, November 16th** in the Back Room at Glen Echo. Check the website for details as the date approaches.

# DANA & SUSAN ROBINSON

NEO-TRADITIONAL SINGER-SONGWRTERS

SATURDAY, NOVEMBER 20 · 8 PM

Come hear stories of America, sung and played by a duo of guitar-playing, banjo-frailing, fiddle-sawing and harmony-singing interpreters of the American experience.

From the Pacific Northwest, **Dana** moved to New England into the thriving songwriters' scene and old-time music. **Sue** grew up in a musical New England family with the classics and Scottish fiddle, but fell in love with old-time southern banjo. After they met (at a concert in California), they moved to western North Carolina, where they could study the Appalachian traditions they both love.

As performing musicians traveling this country, they gather images and stories of the land and its people, of historic and literary characters. These become material for their songs and tunes. **Dana's** lyrics paint vivid pictures; **Sue's** tunes could be decades older. They mix traditional and contemporary sources while maintaining the rhythms and energy of old-time music. Toes will tap to the banjo/guitar pairing, the fiddle, the mandolin, perhaps harmonica – and the fine vocal harmony – as their stories unfold.

**Dana and Susan Robinson** join us from Asheville, NC for our November program, at the **Washington Ethical Society Auditorium, 7750 16th St., NW, Washington, DC 20012. General Admission is \$15; free to FSGW members and WES members.**



## Table of Contents

### FSGW

Advance Notices..... 13  
 Board Members/Meeting..... 9

### FSGW Concerts:

**Saturday, November 6**  
*Zedage Ensemble* ..... 7  
**Friday, November 19**  
 DAVID JONES (HOUSE CONCERT) .. 5  
**Sunday, November 28**  
 JOE HICKERSON'S 75TH..... 1

### Saturday, December 18

NOWELL SING WE CLEAR..... 8  
 Eisteddfod New York..... 6  
 Feature Article ..... 8  
 FSGW Mini Fest ..... 6  
 Sunday Night Contra Dances ..... 2  
 Directions ..... 23  
 Editorial Policy ..... 22  
 English Country Dances ..... 4  
 Family Dances ..... 4  
 Sings/Swaps & Co-Sponsored Events 9

### Features

November Calendar .....12-13  
 Ad Policy..... 22  
 Concerts & Concert Series.....11  
 Dances ..... 15  
 Dance Classes ..... 19  
 Jams/Open Mics/Audience Participation..20  
 Storytelling ..... 21  
 Workshops, Weekends, Festivals  
 & Special Events ..... 21

# FSGW English Country Dances at Glen Echo Town Hall, MD Wednesdays • 8 to 10 pm

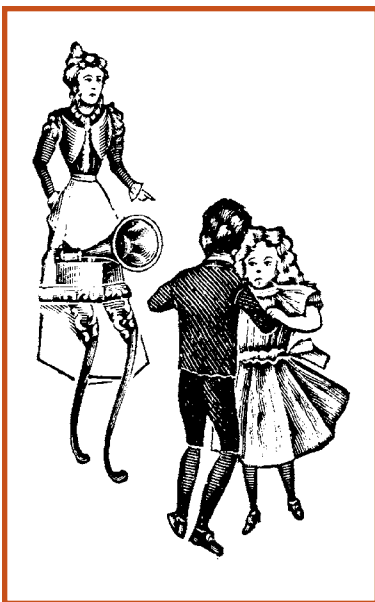


Dance on a wood floor in the climate-controlled community room of the Glen Echo Town Hall (Directions, Page 23). Bring clean, non-scuffing shoes for dancing. Cheerful, patient, talented callers are accompanied by top-notch musicians – every Wednesday a different and delightful mix of instruments, including piano, fiddle, flute, harp, oboe, concertina, bassoon, cello, viola, and recorder. Light refreshments served at the break. Experienced and new dancers welcome. No partner required. **Info: Stephanie Smith at 301.229.3577 or Roger Broseus at English@fsgw.org**

**Admission: \$8 for FSGW members,  
\$10 for non-members.**

## November

- 3 **Bob Farrall** leads the dancing while **Rhonda Hotop** (fiddle), **Ralph Gordon** (cello) and **Melissa Running** (piano) play the tunes
- 10 **Dan Gillespie** calls to the music of **Jeff Steinberg** (fiddle), **Karin Loya** (cello), and **Melissa Running** (piano)
- 17 **Michael Barraclough** calls while **Bruce Edwards** (bassoon and concertina), **Becky Ross** (fiddle), **Stephanie Smith** calls while **Becky Ross** (fiddle), **Anna Rain** (recorders) and **Melissa Running** (piano) play the tunes.
- 24 **Anna Rain** calls the playing of **Colleen Reed** (flute), **Paul Oorts** (mandolin), and **Liz Donaldson** (piano) make the music.

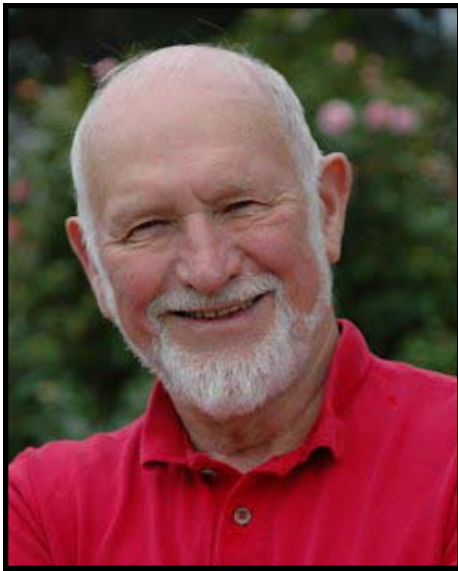


## FSGW Family Dance

**Sunday, November 14 • 3-5 pm**  
Glen Echo TownHall, Glen Echo Park, MD  
(Directions, Page 23)



**Michael Barraclough** calls to *New Broom* with **Bob McCluskie** on fiddle, **Carolee Rand** on guitar, banjo, and uke, and **Bruce Hutton** on guitar, banjo and uke. Treat family and friends of all ages to an afternoon dance. You will experience the joy of dancing to live traditional American dance music in this unique setting. A patient caller teaches you what you need to know, on the spot, about circle, square and contra dancing. \$5 per person (age 4 and up). This is a great activity for any group with folks ages 4 to 104. For updates, see [www.fsgw.org](http://www.fsgw.org).



# David Jones

English singer of  
traditional, Musical Hall, and contemporary songs

Friday, November 19 • 8 pm

**David Jones**, originally from England and now living in Leonia, New Jersey, gateway to the golden west, has a large repertoire of folksong from both sides of the Atlantic. He has performed in North America, Britain, Australia and Europe, singing at festivals, concert halls, clubs, maritime museums and colleges, presenting songs from the great days of sail, Music Hall favorites, traditional ballads, and the works of contemporary writers. He sings both a cappella and with guitar accompaniment and involves his audience in refrains and choruses ranging from boisterous to sentimental.

As well as performing solo, David has sung with **Heather Wood** and the late **Tom Gibney** as *Poor Old Horse*, with **Jeff Warner**, **Jeff Davis** and **Jerry Epstein** as *The Bermuda Quadrangle*, with **Peter Marston** and **Charles O'Hegarty** as *The Starboard List*, and was a member of the singing crew on the Hudson River sloop *Clearwater*. He has also sung and recorded with *Dan Zanes and Friends* and his work with the guitarist **Bill Shute** led to the award winning *Widdecombe Fair* now available on the Dan Zanes label, Festivalfive Records. He now sings songs of the sea with *The New York Packet* at South Street Seaport in New York City, still performs with **Heather Wood** as a duo, and with **Jerry Epstein**, who adds wonderful piano and concertina accompaniments to the songs.

**David** has played feature roles in many theatrical productions to favorable critical reviews, and has performed across the USA as the featured artist in *The Victorian Revels*, a production based on traditions of the Winter Solstice conceived and produced by Revels Inc. He has played the part of the great sailor Joshua Slocum in *Sailing Alone*, with words and music by **Dillon Bustin**, and has sung and provided narration for a number of Public Broadcasting productions, including *A Prairie Home Companion*, *Africans in America* and *Simple Gifts*.

Please call **Dennis** or **Judy Cook** at 301.776.4314 for reservations (strongly suggested) and directions. Suggested donation \$15.

## Young People's Band Plays Family Dance

The FSGW October Family Dance was played by a group of young musicians, most of whom are children of musicians who have been playing the local dances for 30 years or more. The born-into-it feeling was strong. A few members of the prior generation were there for backup. **Janine Smith** was the caller with guest **Eric Marin**. Flautist **Andrew Vargo** recalls: "I had a really great time playing for the dance. The practice session was a wonderful change of pace from the standard I am so used in school band. I really liked the low pressure atmosphere, fun people having a good time. However, during the dance I was often flying by the seat of my pants. But in the end this did help to develop many musical skills that I do not often use, like transposing on sight and learning new pieces as I played them! I also enjoyed being able to play this kind of music with fun people and people my age."

We will be back next year for an even better dance. If you're interested in playing with the 2011 edition of The Young People's Band, October 9<sup>th</sup>, 2011, send an email to [dance@fsgw.org](mailto:dance@fsgw.org).

FSGW co-sponsoring

Kerhonkson, NY

# EISTEDDFOD, NEW YORK

FRIDAY, NOVEMBER 5 THROUGH SUNDAY, NOVEMBER 7  
HUDSON VALLEY RESORT AND SPA • 400 GRANITE ROAD, KERHONKSON, ULSTER COUNTY, NY 12446

The Folk Music Society of New York, Inc. invites you to join leading singers/musicians in a weekend of traditional folk/roots music at the Hudson Valley Resort and Spa in Kerhonkson, NY 12446. Because FSGW is one of eight co-sponsoring organizations, our members receive a discount on admission and hotel rates.

Meet outstanding performers in 25 workshops and three concerts, plus an open mike, late night singing, a contra dance, and informal socializing, music making, outdoor walks plus convenient hotel rooms, good food, a spa, an indoor pool, and more – ideal for the whole family.

Featured artists include **Paul Brown, Martha Burns, Jerry Epstein, Howard Glasser, Benny Graham, Alan Friend, Lorraine & Bennett Hammond, Sharon Katz, Alison Kinnaird, John Kirk & Trish Miller, Vic Legg, Bob Malenky, Val Mindel, Robin Morton, Joe Newberry, Caroline Paton, Steve Suffet, Dwayne Thorpe, Triboro, Mickey Vandow, Eric Weissberg, Heather Wood,** and more. For a full list and details on performers go to [www.eisteddfod-ny.org](http://www.eisteddfod-ny.org).

Attendees can register for the entire weekend at the hotel, or day-trip from nearby lodging. Information, rates and booking forms are at [www.eisteddfod-ny.org](http://www.eisteddfod-ny.org). Or you can reserve online directly at: <http://eisteddfod-ny.eventbrite.com>.

[The word “Eisteddfod” is Welsh and connotes a gathering of poets and musicians.]



## FSGW MIDWINTER FESTIVAL

**SATURDAY, FEBRUARY 5, 2011 • NOON-10:30 PM**

The mid-winter mayhem known as the FSGW Mini-Fest will be held at the **Takoma Park Middle School, 7611 Piney Branch Rd., Takoma Park, MD on Saturday, February 5, from noon until 10:30 pm.** This annual (weather permitting!!) FSGW event features two simultaneous all-day dance tracks and seven workshop and performance sites, so find that calendar and save the date! Planning is underway. If

you are interested in performing, volunteering, selling crafts, or offering a workshop, please contact **April Blum, Charlie Baum, or Linda Goodman** by email – either [minifest@fsgw.org](mailto:minifest@fsgw.org) or [minifestmessages@aol.com](mailto:minifestmessages@aol.com).

**Daytime Performance/Workshops:** Check the website for updates; a tentative performance grid will be published in the January Newsletter, but the website will have much more up-to-date information, and the grid should be available to the public by the first week in December. We expect to have All day concerts In the Cafetorium, “Roots Americana” / Bluegrass track, Storytelling The Jams room will probably begin with a Gospel Sing, followed by Sacred Harp, and Sea Chanteys. Then a two-hour blues jam, and an Irish Seisiún from 5-6. And three other classrooms, which will feature an exotic assortment of wonderful music, including a day-long track of traditional ballads.

**Daytime Dance:** Main Gym: Seven hours of dance – Probably in this order: English Country Dance, then an hour of Swedish Hambo, followed by Norwegian Telespringar. At 3, a Barn Dance to rollicking music by **AP & The Banty Roosters**. At 4, **Kim Forry** and **Jan Scopel** will teach Clogging 101, also with **AP & The Banty Roosters**. At 5, an English ceilidh, hosted by **Michael Barraclough**. At 6, a waltz workshop. Aux Gym: Contrás and squares from noon to 6, beginning with an introductory workshop at noon, and continuing until 6 pm. Callers will include **Ron Buchanan, Perry Shafran** and **Sargon de Jesus**. If you’d like to call a dance, let April Blum know – there should be a one-hour open mike from 5-6.

**Hallways.** Local Morris dancers and rappersword groups invade the hallways and perform throughout the day (we used to try to schedule them, until we realized how pointless **that** was). They do usually wear bells, so you’ll hear their energetic and robust dances coming your way.

From 7:30 to 10:30, two simultaneous evening programs (and yes, you can bop back and forth and try them both):

In the Main Gym, an evening dance of squares and contrás, featuring guest caller **Ron Buchanan**.

In the Cafetorium, a concert – we hope to get some or all of the wonderful performers who were scheduled to sing last year, when 30 inches of snow brought Mini-Fest 2010 to a cold stop.

# Zedashe Ensemble

traditional Georgian music and dance  
**Saturday, November 6 • 8 pm**

Celebrate the release of their CD “*Enduring Fortress*” and commemorate the upcoming 20th anniversary of Georgian independence with an evening of song and dance featuring the **Zedashe Ensemble**. On their third US tour, **Zedashe Ensemble**, a ten-person group includes stunning singers, brilliant dancers and talented instrumental work.

In both secular and religious song, the dark, sonorous vocal style features haunting three-part harmony unique to Georgia’s Caucasus Mountains, and because there are two sets of siblings in the ensemble, the harmonies are truly striking. The group features two dancers, and dance is an integral part of traditional family singing, so the ensemble’s singers are all trained in dance as well. The music reflects a range of rituals, from grape harvesting to martial arts to Orthodox hymns, and are sometimes accompanied by various lutes, pipes, drums and accordion.

Directed by **Ketevan Mindorashvili**, **Zedashe** was founded in the mid 1990s to recover a repertoire suppressed during the Communist era. One of the few mixed-gender performing ensembles in Georgia, they continue now to preserve and revitalize a way of singing threatened by modernization. The ensemble brings culturally unique music we will not hear elsewhere, collected and researched by ensemble members. Even their name, **Zedashe**, has cultural significance; zedashes are earthenware jugs used for making wine dedicated to venerating ancestors.

**At Glen Echo Town Hall, 6106 Harvard Ave.,  
 Glen Echo, MD, co-sponsored by World Music  
 and Dance Institute and FSGW.**

**Admission is \$15.**

**Info and tickets: World Music  
 & Dance Institute, 301.717.4641**

**• [zedashe.org](http://zedashe.org)**



FSGW Special Event

Silver Spring, MD



# Nowell Sing We Clear

## Saturday, December 18

### 3 pm (matinee!) (We Sold Out last time!)

It's not too early to plan your holiday entertainment. Bring the whole family (including your voices) to the **Church of the Ascension, 633 Sligo Ave**, in downtown Silver Spring, for this year's edition of **Nowell Sing We Clear**. Every year this lively quartet (**John Roberts, Tony Barrand, Fred Breunig and Andy Davis**) culls carols, songs, tales and customs of Winter Solstice, Christmas, and New Year's celebrations to craft a high-energy, participatory entertainment. It's a family-friendly afternoon guaranteed to reverse the darkness of winter and start the trend toward longer days and the greening of spring to come!

**Nowell Sing We Clear** celebrates Christmas as it was observed for centuries in Britain and North America, and as it is still kept in some places. Many songs come from an age when the midwinter season was a time for joyous celebration and vigorous expression of older, pagan religious traditions. While some of the singing is unaccompanied, the performance also features the energetic dance band sound of fiddle, button accordion, electric piano, drums, and concertina. Some "new" (that is "different") songs and carols are introduced every year. We have a very special door prize of Nowell recordings to award a concert-goer.

**Buy your tickets through FSGW by December 17 and save \$3 per ticket. General admission \$25. Students (to age 22) \$10. To reserve tickets, go to [www.fsgw.org](http://www.fsgw.org) or send a check by December 10 made out to FSGW to: NSWC c/o M. Summerour, 5212 Juliet St., Springfield, VA 22151. Info numbers: 703-981-2217 or 703-354-6460."**

## Let's hear it for the volunteers! without whom we could not function ...

Our thanks for the concert assistance of **Fred Stollnitz, Janet Stollnitz, Leigh Partington, Jody Fitterer and Donna Fletcher**. For keeping the dances stepping along: **Steven Roth, Robert Cox, Dan Kahn and the Door Committee**, and **Janine Smith** and the Workshop Teachers. Working with **Stephanie Kaufman** to run the table at the Takoma Park Street Festival were **Cat Tucker, Jay Wells, Jane Gorbaty, and Daniel Mudd**. Hosting our Magical Montgomery booth were **Bob Clayton, George Stephens, Hannah Platt and Charlie Baum**. And a great big THANK YOU!!!! to **Tom Cox**, who not only lent his bass to the **Ebony Hillbillies** for their concert, but he drove them to Richmond at the crack o' dawn the following morning for them to make their connection to their Saturday festival in South Boston, VA.

If you would consider coordinating the monthly Family Dance, please contact Penelope at [dance@fsgw.org](mailto:dance@fsgw.org).

There are whole committees that operate beneath the radar in FSGW. Thanks to them as well. without them we could not function!

—Mary Cliff, FSGW President

# FSGW Sings/Swaps & Co-sponsored Events

## FSGW Open Sing • Colmar Manor, MD

*First Fridays • 8:30 pm*

The November sing will be held Friday, November 5, and will be hosted by **Mary Jo and David Shapiro**. The topic is Mungo. No, we don't mean Mongo (humongous). Here are some definitions of this oddball word: a scrap copper wire, usable items retrieved from the trash, a mingling, or a mixture, a confusion, or a mess. So sing about your favorite company of people, a big mess, a magic potion, or somewhere "Ye mun go"...or about a dog named Mungo, for that matter. The goal is simply an interesting mixture of voices and songs. Call **301.699.8833** for directions.

## FSGW Gospel Sing • Silver Spring, MD

*Sunday, November 14 • 4 - 8 pm*

Gospel sings are held the second Sunday of every month at various homes. Singing starts at 4 pm and breaks for a potluck supper at 6 pm with more singing after supper. Everyone is welcome! This month's Gospel Sing will be at the home of **Dan Peed, 220 Hillsboro Drive, Silver Spring, MD 20902**. Dan's house is in the Kemp Mill subdivision of Montgomery County. If you come via Metro and want to arrange to be picked up at the Forest Glen station on the Red Line, or if you are driving and get lost on the way, **phone Dan at 301.593.8045**.

## FSGW Storyswap • Silver Spring, MD

*Saturday, November 13 • 7 :30 PM*

Storytellers and listeners are invited to the home of **Cricket Parmalee** in Silver Spring for an evening of shared stories and potluck snacks. Free. Call **301-588-3912** for RSVPs and directions.

## Sacred Harp Singing • Arlington, VA

*Sunday, November 27 • 4-8 pm*

Monthly on the fourth Sunday, singers enjoy the unaccompanied harmonies of the old-time shapenote hymns and fugues in the 1991 edition of the original *Sacred Harp* and *1958 Christian Harmony* (loaner books available) with a potluck supper break from 6-7 pm. St Peters Church. **301.229.8534**

**Directions:** St. Peter's is one half mile south of Chain Bridge, on the west side of Glebe Road, (crossing from Washington, on your right; from Virginia, on your left; from the Beltway, take the GW Parkway south to 123 north, then right at the T to Glebe. The church is set back from Glebe Rd. Turn where the sign says Tazewell St, and bear right.

## Co-Sponsored Event

### Glen Echo International Folkdancers • MD

*Thursdays • 7:30-10:34 pm*

Every Thursday at the Church of the Redeemer, 6201 Dunrobbin Drive (just west of the shopping center across from Glen Echo Park). Lesson at 7:30. Request dances from 9-10:45. Mostly recorded music. No partner/experience necessary. Wear comfortable clothing and soft soled shoes. Adm. \$5. Info: **Jamie at 301.466.3018, or dancingplanet@erols.com**



## FSGW Board 2010-2011

Mary Cliff, *president*  
David Shewmaker, *vice president*  
Jerry Stein, *treasurer*  
Cat Tucker, *secretary*  
Marty Summerour, *programs*  
Penelope Weinberger, *dance*  
Stephanie Kaufman, *membership*  
Roxanne Watts, *publications*  
Katie Blaisdell, *publicity*

### Members-at-Large

Sue McIver  
Hannah Platt  
Steven Roth

president@fsgw.org  
vicepresident@fsgw.org  
treasurer@fsgw.org  
secretary@fsgw.org  
program@fsgw.org  
dance@fsgw.org  
members@fsgw.org  
newsletter@fsgw.org  
publicity@fsgw.org

703.534.7581  
202.669.9674  
703.671.6181  
703.723.3621  
703.354.6460  
301.315.9461  
301.588.8594  
703.618.1799  
808.443.1793

board1@fsgw.org  
board2@fsgw.org  
board3@fsgw.org

703.519.9157  
301.717.4641  
301.933.2070

### Mini Festival Coordinating Committee

April Blum, *Mini-Fest Chair*  
David Shewmaker,

minifest@fsgw.org  
vicepresident@fsgw.org

703.978.2774  
202.669.9674

### Washington Folk Festival Coordinating Committee

Dwain Winters

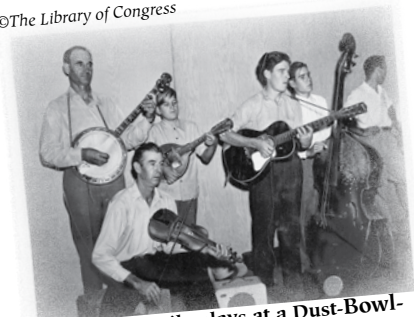
301.657.2789

## FSGW Board Meetings

*Tuesday, November 2 • 8 pm*

The monthly FSGW board meeting will be held in Classroom 201 Arcade Bldg at Glen Echo Park, MD. All FSGW members may attend. If you wish the Board to consider a particular matter, please contact the appropriate board member, or **Mary Cliff by e-mail, president@fsgw.org or call afternoons or evenings 703-534-7581** in advance of the meeting.

©The Library of Congress



The King Family plays at a Dust-Bowl-era California migrant camp.

# Folklore at Your Fingertips: Exploring the Resources of the American Folklife Center Online

by Kathy Westra

If you're a member of the Folklore Society, chances are you've wondered about the historical context of some of the songs you hear, tunes the bands play at the weekly dances, or stories spun by our many local tale-tellers. Until recently, exploring the incredible resources of the Library of Congress' American Folklife Center required becoming an intern at the Center's archive (formerly known as the Archive of Folk Culture), or taking time off to visit the reading room during Monday through Friday business hours. Now, thanks to the Internet and the library's efforts to digitize many of the Center's collections, many source materials and recordings are available online—and they're well worth exploring!

To start, go to the Folklife Center's homepage on the web: [www.loc.gov/folklife](http://www.loc.gov/folklife). It's the portal that will help you find a world of information on folklore, folk music, oral histories, and even a guide that tells you how to do your own collecting of folk material. Follow the link on the homepage to a new digital version of the Center's **Folklife Sourcebook**, which provides links to all things folklore: museums, libraries, other folklore societies, publishers and dealers of books and recordings, undergraduate and graduate programs in folklore and ethnomusicology, and a host of other useful resources. Take an overview tour by exploring the **online guide** to the Center's work and collections. Once you've done that, poke around the site to dig deeper into the things that interest you.

Do you wonder about the music and stories of the people who fled the Dust Bowl for California in the early 1940s? You can explore the Center's "**Voices from the Dust Bowl**" collection—363 sound recordings and accompanying photographs that document the life, work, music, and cultural traditions of residents in the Farm Security Administration's (FSA) migrant work camps in central California from 1940 to 1941.

Are you interested in African American history? The online collection, "**Voices from the Days of Slavery**," contains more than seven hours of interviews with 23 former slaves, born between 1823 and the early 1860s, who discuss how they felt about slavery, slaveholders, coercion of slaves, their families, and freedom. Several individuals sing songs. It's an amazing window into history.

Want to know more about the songs and stories from America's inland waterways? Then "**Captain Pearl R. Nye: Life on the Ohio and Erie Canal**" is your window into the life and times of Nye, who was born and raised on a canal boat and who devoted considerable time and energy to preserving its songs and stories after the canal closed permanently in 1913. The collection—all available online—contains photographs, letters, song lyrics, transcriptions, and recordings of 75 canal songs sung by Nye.

If traditional Appalachian instrumentals are more to your liking, try exploring "**Fiddle Tunes of the Old Frontier: The Henry Reed Collection**." It's a compilation, by folklorist, FSGW member and old-time fiddler **Alan Jabbour**, of 184 original sound recordings of Virginia fiddler Reed. The collection also includes Jabbour's detailed field notes and 69 musical transcriptions with descriptive notes on the tunes' histories. Jabbour recorded the tunes in 1966-67, when Reed was more than 80 years old.

©The Library of Congress



Saturday night dance at a California migrant camp in 1940, part of the "Voices from the Dust Bowl" collection

©The American Folklife Center



Nye's father William is standing on the rear boat and his mother Mary is seated at the front.

All of these examples are meant to provide a tiny taste of what you can find when you explore the Folklife Center's collections online. Go there yourself and find all the other riches available via your computer. If you're on Facebook, you can "like" the American Folklife Center and get regular updates about concerts, lectures, symposia, as well as interesting facts about the Center's collections. And if you have the time, you can still travel to the Jefferson Building—the oldest Library of Congress building—to attend one of the Center's many live concerts or explore the collections in person.

# Concerts & Concert Series

## Orrin Star Concert • Cabin John, MD *Saturday, October 30 • 7:30 pm*

"A Night of Bluegrass, Folk & Humor." Once described as 'Arlo Guthrie-meets-Doc Watson', Orrin was the 1976 National Flatpicking Champion, has appeared on *A Prairie Home Companion*, and has worked as a stand-up comedian. Cabin John Gardens Community House, 8½ Webb Rd. Doors open at 7 pm. \$15 admission. Tickets available at the door. [www.orrinstar.com](http://www.orrinstar.com)

## The Blue Moon Cowgirls • Catonsville, MD *Saturday, November 6, • 8 pm*

House concert at the home of **McGregor Yatsevitch and Barbara Svoboda**. With shimmering harmonies, sparse and flexible instrumentation, and their down-to-earth stage presence, *The Cowgirls* pay tribute to the full spectrum of country music, while creating a sound that is distinctly their own. \$15 at the door, reservations necessary. Info: [svob@comcast.net](mailto:svob@comcast.net)

## Glyn Collinson • Edgewater, MD *Saturday, November 13 • 8–10 pm*

This transatlantic Singer/Songwriter/Space Scientist has only lived here since January, but he's already toured with his own folk band from Britain, played in **Jennifer Cutting's Ocean Orchestra**, and gigged with Texas singer **Jed Marum**. He has yet to be pelted with rancid tomatoes—an unbroken record of which he is justly proud. Now is your chance to see him play solo. 1722 Shore Drive, \$10. Ticket hotline: 410.956.2266, or [callagh@verizon.net](mailto:callagh@verizon.net). [www.glyncollinson.co.uk](http://www.glyncollinson.co.uk)

## Fiddle Summit Concert • Shepherdstown, WV *Friday, November 19 • 8 pm*

A showcase concert presents some of the finest fiddlers from a variety of traditions including **Donna Hebert and Max Cohen**. *Terpsichore* features US National Scottish Fiddle Champion, **Elke Baker** with **Liz Donaldson, Ralph Gordon, and Bruce Sagan**. Old-time fiddle master **Joe Hermann** and Irish fiddler, **Joe DeZarn**. Shepherdstown Presbyterian Church on the corner of King and Washington. \$15, \$12 seniors, \$10 SMD members, \$8 students. For more info call Joanie at 304.263.2531, or check [www.smad.us](http://www.smad.us).

## Down Home—Back Porch Blues • Annapolis, MD *Sunday, November 21 • 2–4 pm*

Mississippi Delta Blues, Piedmont Blues and Ragtime Music. Featuring **Eleanor Ellis, Rick Franklin, Erin Harpe, Neil Harpe, Jay Summerour and Warner Williams**. Francis Scott Key Auditorium, St. John's College, 60 College Avenue, Annapolis, MD. Tickets: \$20. To reserve, and for further info: [www.stjohnscollege.edu/events/AN/blues.shtml](http://www.stjohnscollege.edu/events/AN/blues.shtml), or contact **Kathy Dulisse** at 410.626.2530.

## The Barns at Wolf Trap • Vienna, VA *November Dates • Times Vary*

1635 Trap Rd., Vienna VA 22182; [www.wolftrap.org](http://www.wolftrap.org)

- 4 **Battlefield Band**— Scottish \$24
- 5 **Chris Smither** —Acoustic blues 8 pm; \$24
- 6 **The Nields** sibling harmony, updated traditional and contemporary folk \$18

## The Birchmere

Birchmere Concert Hall, 3701 Mt. Vernon Ave., Alexandria Va 22305; all begin at 7:30 pm [www.birchmere.com](http://www.birchmere.com)

### November

- 5 **Jerry Jeff Walker & Band + Albert & Gage** open - Texas country folk, \$55
- 6 **Hot Rize**, bluegrass with parody alter ego **Red Knuckles & the Trail Blazers**, \$36.50
- 7 **Don McLean + Alice Peacock** opens, folk-pop, \$49.50
- 10 **Mary Black + (her daughter) Roisin O'Reilly** opens - Irish vocals, \$45
- 13 **John Gorka + Lucy Kaplansky** - songwriters, \$29.50
- 26 & 27 **Seldom Scene + Dry Branch Fire Squad** - bluegrass, \$29.50

## Concert Series

*Listed by day of the week*

*Sundays*

## Focus Inn Alexandria • Alexandria, VA *Sunday, November 21 • 7 pm*

**Beaucoup Blues**; fuses old-time with roots rock and rich vocal harmonies; Church of the Resurrection, 2280 N. Beauregard St.; Admission \$18/ \$15 Info: 703.501.6061, [kay@focusmusic.org](mailto:kay@focusmusic.org) or [www.focusmusic.org](http://www.focusmusic.org)

## Kensington Row Bookshop • Kensington, MD *Sunday, November 14 • 4–6 pm*

**Newgrass Effect and Doris Justis**. Acoustic, first come, first served. Donation to performer suggested. 3786 Howard Avenue 301.949.9416



*Concert series continued on page 14.*



# NOVEMBER 2010

SUNDAY	MONDAY	TUESDAY	WEDNESDAY	THURSDAY
<p><b>OCTOBER 31</b></p> <p><b>7:30 FSGW HALLOWEEN COSTUME CONTRA DANCE</b>  <b>SUSAN PETRICK CALLS TO THE OPPORTUNISTS</b></p>	<p><b>1</b></p> <p>7 DC Bluegrass Jam                      7:30 Bethesda Intl Dance                      7:30 Arlington Morris Women                      7:30 IMT- Sarah McQuaid                      8 Baltimore English Country Dance                      8 Bethesda Scottish Dance</p>	<p><b>2</b></p> <p>7 Chevy Chase Israeli Dance                      7:15 Reston/Herndon Folk Club                      8 Greenbelt Scottish Dance                      8 Arlington Intl Folk Dance                      8 Sea Chanteys/Wheaton  <b>8 FSGW BOARD MEETING</b></p>	<p><b>3</b></p> <p>7:30 Rock Creek Morris Women  <b>8 FSGW ENGLISH COUNTRY DANCE</b>                      8 Baltimore Contra Dance                      8 Alexandria Scottish Dance                      8 Columbia Intl Folk Dance</p>	<p>7 Fred  <b>7:30 GLE</b>                      7:30 Chev                      7:45 Arlin                      8 Mt. V                      8 Fogg                      8 Bald                      9 Glen</p>
<p><b>Fall Back 7</b></p> <p>9 am Annapolis Jam                      3 pm Wheaton Scottish Jam                      3 Glen Echo Waltz                      4 Alpine Dancers  <b>7:30 FSGW CONTRA DANCE</b>  <b>TOM CALWELL AND MYRA HIRSCHBERG CALL TO FOOTLOOSE EISTEDDFOD NY</b></p>	<p><b>8</b></p> <p>7:30 Bethesda Intl Dance                      7:30 Arlington Morris Women                      7:30 IMT—Bryan Bowers                      8 Baltimore English Country Dance                      8 Bethesda Scottish Dance</p>	<p><b>9</b></p> <p>7 Chevy Chase Israeli                      7:15 Reston/Herndon Folk Club                      8 Greenbelt Scottish Dance                      8 Arlington Intl Folk Dance                      8 Baldwin's Station                      8 Old Time Jam</p>	<p><b>NEWSLETTER DEADLINE 10</b></p> <p>7:30 Rock Creek Morris Women  <b>8 FSGW ENGLISH COUNTRY DANCE</b>                      8 Sea Chanteys/Baltimore                      8 Baltimore Contra Dance                      8 Alexandria Scottish                      8 Columbia Intl Folk Dance                      8 Focus Rockville</p>	<p><b>V</b></p> <p>7 Fred  <b>7:30 GLE</b>                      7:30 Chev                      7:45 Arlin                      8 Mt. V                      8 Fogg                      9 Glen</p>
<p><b>14</b></p> <p>9 am Annapolis Jam                      2 pm CABOMA Jam                      3 Glen Echo Zydeco Dance                      3 Glen Echo Tea Dance  <b>3 FSGW FAMILY DANCE</b>  <b>4 FSGW GOSPEL SING</b>                      4 Sandy Spring Sacred Harp  <b>7:30 FSGW CONTRA DANCE</b></p>	<p><b>15</b></p> <p>7 DC Bluegrass Jam                      7:30 Bethesda Intl Dance                      7:30 Arlington Morris Women                      7:30 IMT-                      Elke Baker/Ken Kolodner                      8 Baltimore English Country Dance                      8 Bethesda Scottish Dance</p>	<p><b>16</b></p> <p>7 Chevy Chase Israeli                      7:15 Reston/Herndon Folk Club                      8 Greenbelt Scottish                      8 Arlington Intl Folk Dance</p>	<p><b>17</b></p> <p>7 Arlington Jam                      7:30 Rock Creek Morris Women  <b>8 FSGW ENGLISH COUNTRY DANCE</b>                      8 Sea Chanteys/Annapolis                      8 Baltimore Contra Dance                      8 Alexandria Scottish Dance                      8 Columbia Intl Folk Dance</p>	<p>7 Fred  <b>7:30 GLE</b>                      7:30 Chev                      7:45 Arlin                      8 Mt. V                      8 Fogg                      8 Bald                      9 Glen</p>
<p><b>21</b></p> <p>9 am Annapolis Jam                      3 pm Glen Echo Waltz                      4 Alpine Dancers                      7 Focus Inn Alexandria                      Beaucoup Blues  <b>7:30 FSGW CONTRA DANCE</b>  <b>WILL MENTOR CALLS TO NOTORIOUS</b></p>	<p><b>22</b></p> <p>7:30 Bethesda Intl Dance                      7:30 Arlington Morris Women                      7:30 IMT - James Keelaghan                      8 Baltimore English Country Dance                      8 Bethesda Scottish Dance</p>	<p><b>23</b></p> <p>6 Cajun Jam                      7 Chevy Chase Israeli Dance                      7:15 Reston/Herndon Folk Club                      8 Greenbelt Scottish Dance                      8 Arlington Intl Folk Dance                      8 Sea Chanteys/DC</p>	<p><b>24</b></p> <p>7:30 Rock Creek Morris Women  <b>8 FSGW ENGLISH COUNTRY DANCE</b>                      8 Baltimore Contra Dance                      8 Alexandria Scottish Dance                      8 Columbia Intl Folk Dance                      8 Focus Rockville</p>	<p><b>THANKS</b>                      Check</p> <p>7 Fred  <b>7:30 GLE</b>                      7:30 Chev                      7:45 Arlin                      8 Mt. V                      8 Fogg</p>
<p><b>28</b></p> <p>9 am Annapolis Jam                      2 pm CABOMA Jam                      3 Glen Echo Tea Dance  <b>3 FSGW CELEBRATES</b>  <b>JOE HICKERSON'S 75TH B-DAY!</b>  <b>4 FSGW SACRED HARP SINGING</b>  <b>7:30 FSGW CONTRA DANCE</b>  <b>MICHAEL BARRACLOUGH CALLS WITH HAMMER AND STRING</b></p>	<p><b>29</b></p> <p>7:30 Bethesda Intl Dance                      7:30 Arlington Morris Women                      8 Baltimore English Country Dance                      8 Bethesda Scottish Dance</p>	<p><b>30</b></p> <p>7 Chevy Chase Israeli Dance                      7:15 Reston/Herndon Folk Club                      8 Greenbelt Scottish Dance                      8 Arlington Intl Folk Dance</p>		<p>7 Fred  <b>7:30 GLE</b>                      7:30 Chev                      7:45 Arlin                      8 Mt. V                      8 Fogg</p>



THURSDAY	FRIDAY	SATURDAY
<b>4</b>	<b>5</b>	<b>6</b>
erick Irish/Bluegrass <b>IN ECHO INTL FOLK DANCE</b> y Chase Intl Dance gton Circle Dance /ernon Intl Folk Dance y Bottom Morris Men win's Station Echo Slow Blues Dance	7 Arlington Jam 7 Potter's House Concert 8 Focus Garnet Rogers 8:15 Greenbelt Intl Folk Dance 8:30 Friday Night Contra Dance <b>8:30 FSGW OPEN SING</b>  <b>EISTEDDFOD NY</b>	1 pm Archie Edwards Blues Jam 7 CCE Monthly Ceili <b>8 FSGW CO-SPONSOR CONCERT:</b> <b>ZEDESHE ENSEMBLE</b> 8 Shepherdstown Contra Dance 8 Elverson Contra Dance 8 Glen Echo Swing Dance <b>EISTEDDFOD NY</b>
<b>11</b>	<b>12</b>	<b>13</b>
<b>ETERN'S DAY</b> erick Irish/Bluegrass <b>IN ECHO INTL FOLK DANCE</b> y Chase Intl Dance gton Circle Dance /ernon Intl Folk Dance y Bottom Morris Men Echo Slow Blues Dance	7 pm Potter's House Concert 8 Harrisburg Contra Dance 8 Glen Echo Blues/Swing Dance 8:15 Greenbelt Intl Folk Dance 8:30 Friday Night Contra Dance	1 pm Archie Edwards Blues Jam 7 SMTMD Contra 7:15 Reston Contra Dance <b>7:30 FSGW STORYSWAP</b> 8 Baltimore Contra Dance 8 Silver Spring English Country Dance 8:15 Greenbelt Israeli Dance
<b>18</b>	<b>19</b>	<b>20</b>
erick Irish/Bluegrass <b>IN ECHO INTL FOLK DANCE</b> y Chase Intl Dance gton Circle Dance /ernon Intl Folk Dance y Bottom Morris Men win's Station Echo Slow Blues Dance	7 pm Potter's House Concert 7:30 333 Coffeehouse <b>8 FSGW HOUSE CONCERT</b> <b>DAVID JONES • LAUREL, MD</b> 8 Glen Echo Swing Dance 8:15 Greenbelt Intl Folk Dance 8:30 Friday Night Contra Dance	1 pm Archie Edwards Blues Jam 1:30 Hammered Dulcimer Change 7 Scandinavian Dance-Greenbelt 7 Annapolis Contra Dance 7:30 Fiddle Retreat Contra 7:30 Centreville English Country Dance <b>8 FSGW PROGRAM:</b> <b>DANA &amp; SUSAN ROBINSON</b> 8 Lancaster, PA Contra Dance 8 Greenbelt Israeli Dance 8 Sugarloaf Coffeehouse-Germantown 8 Baltimore Storytelling
<b>25</b>	<b>26</b>	<b>27</b>
<b>SGIVING DAY</b> to make sure events are happening. erick Irish/Bluegrass <b>IN ECHO INTL FOLK DANCE</b> y Chase Intl Dance gton Circle Dance /ernon Intl Folk Dance y Bottom Morris Men	7 pm Potter's House Concert 8 Harrisburg Contra Dance 8:15 Greenbelt Intl Folk Dance 8:30 Friday Night Contra Dance	1 pm Archie Edwards Blues Jam 8 Frederick Contra Dance
		 Advent

## FSGW Advance Notice

---

*Saturday, December 18 • 3 PM*  
**NOWELL SING WE CLEAR**  
 Church of the Ascension  
 Silver Spring MD

---

# 2011

---

*Friday, January 7 • 8 PM*  
**KEN KOLODNER, ELKE  
 BAKER AND BRAD  
 KOLODNER**  
 WES Auditorium, 7740 16th St., NW, DC

---

*Saturday, January 22 • 8 PM*  
**HOT SEATS**  
*Old-time/jugband/Klezmer/bluegrass music*  
 WES Auditorium, 7740 16th St., NW, DC

---

*Saturday, February 5*  
**12 noon - 10:30 pm**  
**ANNUAL FSGW  
 MINI-FEST**  
 Takoma Park Middle School  
 Piney Branch Rd., Takoma Park, MD

---

*April 2-3*  
**22ND ANNUAL POTOMAC RIVER  
 SACRED HARP CONVENTION**

---

*April 8-10,*  
**29TH ANNUAL CHESAPEAKE  
 DANCE WEEKEND**  
 Camp Letts • Edgewater, MD

---

*June 4 & 5*  
**31ST ANNUAL WASHINGTON  
 FOLK FESTIVAL**  
 Glen Echo Park, MD

---

*September 30-October 3*  
**47TH ANNUAL GETAWAY**  
 West River Retreat Center • MD



**Concerts & Concert Series continued***Mondays***Institute of Musical Traditions • Rockville, MD  
November • 7:30 pm**

Saint Mark Presbyterian Church, 10701 Old Georgetown Road, for more info go to [www.imtfolk.org](http://www.imtfolk.org) or 301.754.3611

**November**

- 1 Sarah McQuaid – \$15advance/\$20 door
- 8 Bryan Bowers-- \$15/\$20
- 15 Elke Baker and Ken Kolodner – CD release \$15/\$20
- 22 James Keelaghan \$15 adv/\$20 door

*Tuesdays***Focus Rockville • Rockville, MD  
November • 8 pm**

Our home is at the Unitarian Universalist Church of Rockville. Come join us at 100 Welsh Park Drive, 20850 [www.focusmusic.org](http://www.focusmusic.org) 301.275.7459 \$18/15

**November**

- 5 (A Friday) Garnet Rogers
- 23 Chuck Brodsky –singer/songwriter

**Folk Club of Reston–Herndon • Herndon, VA  
Tuesday, November 16 • 7:15–10 pm**

Terry Garland - \$14 (\$13 members) For Seating: Contact Dave Hurd at [DAHurdSr@cs.com](mailto:DAHurdSr@cs.com). [www.restonherndonfolkclub.com](http://www.restonherndonfolkclub.com), or 703.435.2402

Celebrating its 25<sup>th</sup> year with weekly open mics/showcases/concerts at the Tortilla Factory, 648 Elden Street. doors open at 6 pm for dinner, and shows begin at 7:15. [www.terrygarland.com](http://www.terrygarland.com)

*Thursdays***Baldwin's Station • Sykesville, MD  
Thursdays • 8 pm**

7618 Main St, Sykesville, MD. Shows begin at 8. Info: 410.795.1041, [www.uptownconcerts.com](http://www.uptownconcerts.com), or [uptownconcerts@gmail.com](mailto:uptownconcerts@gmail.com)

**November**

- 11 James Keelaghan \$20
- 18 Beth Patterson \$17

*Fridays***Cellar Stage • Baltimore, MD  
Fridays • 8 pm**

In the basement of Faith Community United Methodist Church, 5315 Harford Road Info: 410.521.9099 or [www.uptownconcerts@gmail.com](mailto:www.uptownconcerts@gmail.com) Admission \$20

**November**

- 5 Ellis Paul (ilyAIMY opens) \$20
- 19 The Kennedys + Davey O 420

**Tinsmith • Takoma Park, DC  
Friday, November 12 • 8 pm**

*Tinsmith* and their progressive Celtic sound grace Takoma's newest venue, the Carroll Café. At Seekers Church, 276 Carroll St, NW across from Takoma Metro. Info: Jesse Palidofsky 301.562.4147, or [jessetoons@aol.com](mailto:jessetoons@aol.com)

**Potter's House Benefit Concerts • Washington, DC**

Potter's House, 1658 Columbia Rd NW, easy Metro access and off street parking available. Good music, good food, for a good cause. 7 pm Benefit concerts, \$15 suggested donation; open mic night free. Info: 202.232.5483 or [www.PottersHouseDC.org](http://www.PottersHouseDC.org)

**333 Coffeehouse • Annapolis, MD  
Third Fridays • 8 pm  
November 19–IlyAIMY**

Annapolis Unitarian Universalist Church, 333 DuBois Rd, off Bestgate Ave. Acoustic music. Dessert and coffee available in this smoke- and alcohol-free environment. Doors open at 7:30, concert at 8. Admission \$10, \$8 for Seniors/students. Info: 443.786.0463 or [www.fsgw.org/333/](http://www.fsgw.org/333/) for artists website and sound clip.

*Saturdays***Common Ground • Westminster, MD  
Saturday, November 6 • 8 pm**

Jonathan Edwards, high-energy veteran folk/American singer/songwriter. General Admission: \$19 Info at 410.857.2771, [cground@qis.net](mailto:cground@qis.net), or [www.common-groundonthehill.org](http://www.common-groundonthehill.org)

**Sugarloaf Coffeehouse • Germantown, MD  
November 20 • 8 pm**

Jen and Scott Smith, an award winning pop folk-rock duo from Baltimore. Their passionate guitars and heavenly vocals are a hit with all ages. Sponsored by the Sugarloaf Congregation of Unitarian Universalists at 16913 Germantown Road. Doors open at 7 pm, open mic at 7:30 concert at 8. Suggested donation, \$10. Refreshments, too! Info: 301.208.1437, [www.scuu.org/coffeehouse](http://www.scuu.org/coffeehouse).

# Dances

## Community/Family

### THE FSGW FAMILY DANCE IS LISTED ON PAGE 4

### Galesville Community Square Dance, MD *Saturday, November 27 • 5:30-10 pm*

Yes, it's the Saturday of Thanksgiving weekend. Get outta the house, and bring your guests! Live music, traditional Appalachian dance tunes played by **Lea Weiss** (fiddle), **Gary Wright** (guitar), and Friends. Sittins welcome on fiddle, guitar, and clawhammer banjo. Dance squares, circles, longway sets and waltzes. **Janine Smith** calling. All ages welcome! 5:30 Doors open, 6:00 pot luck, 7:00 family-friendly dancing, and 8:30-10 pm more challenging dancing. Adults \$10, 5-17, \$5, and Under 5, free. Galesville Memorial Hall, 952 Galesville Road, Galesville, MD [www.garyandleah.com](http://www.garyandleah.com), 301.926.9142

## Contra

*Sundays*

### THE FSGW SUNDAY NIGHT DANCES ARE LISTED ON PAGE 2

*Wednesdays*

### Baltimore Folk Music Society • Baltimore, MD *Wednesdays • 8-10:30 pm*

Lovely Lane Church., 2200 St. Paul St, Baltimore. Beginners are always welcome. *New dancer workshops at 7:30 on 2<sup>nd</sup> and 4<sup>th</sup> Wednesdays.* Nationally-known musicians and callers appear regularly. \$9 Members/\$13 Non-members, \$4/6 Member/Non-member students with ID.

#### November

- 3 **Brian Hamshar** calls to *Sugar Beat*
- 10 **DeLaura Padovan** calls to *Taylor Among the Devils*
- 17 **Ann Fallon** calls to *The Baltimore Open Band*
- 24 **Bob Dalsemer** calls to *Fiddlestyx*

*Fridays*

### Friday Night Dancers • Glen Echo Park, MD *Fridays • 8:30-11:30 pm*

The Friday Night Dancers (in cooperation with the National Park Service, Montgomery County, and the Glen Echo Park Partnership for Arts and Culture) sponsor weekly contra dances to live music in the Glen Echo Spanish Ballroom. New dancer classes start at 7:30. Dances start at 8:30. \$9 for the lesson and dance. To

play for or call a dance, email [fndgigs@petml.com](mailto:fndgigs@petml.com). General info at [www.fridaynightdance.org](http://www.fridaynightdance.org)

#### November

- 5 *THIS dance is in the Bumper Car Pavillion!* **Bill Olson** calls to *Ti' Acadie* with **Pam Weeks** on fiddle, mountain dulcimer and guitar, **Jim Joseph** on banjo, mandolin, and more, and **Bill Olson** on guitar and bass.
- 12 **DeLaura Padovan** calls to the fabulous *Glen Echo Open Band*.
- 19 **Will Mentor** calls to *Notorious* with **Eden MacAdam-Somer** on fiddle; **Larry Unger** on guitar, banjo, and friends.
- 26 **Laura Brown** calls for a special Thanksgiving dance with the *Capitol Quicksteps Quadrille Orchestra*; **Steve Hickman**, **Julia Borland**, **Alexander Mitchell**, fiddles; **Susan Brandt**, flute; **Jonah Blaustein**, clarinet; **Dave Crandall**, sax; **Matt Irwin**, trumpet; **John O'Loughlin**, trombone; **Ralph Gordon**, cello; **Jim Bienemann**, bass; **Larry Robinson**, banjo and mandolin; **John Devine**, guitar; **Marc Glickman**, piano; **Will Morrison**, percussion.

### Locust Lane Contra • Harrisburg, PA *2<sup>nd</sup> and 4<sup>th</sup> Fridays • 8-11 pm*

All ages and experience levels welcome. Light refreshments at the break. New dancer class at 7:30. Members \$8. Non-members \$9. Students \$4. Check the website for updates at [www.harrisburgcontra.org](http://www.harrisburgcontra.org)

*Saturdays*

### Elverson Dance • Elverson, PA *1<sup>st</sup> Saturdays • 7:30-10:30 pm*

Check website for info. St. Mary's Episcopal Church, 61 Morningside Drive, \$8, \$5 students/seniors. New dancers welcome. Bring soft-soled shoes and a snack to share at the break. Smoke & alcohol free. Beginners lesson at 7. Children must be chaperoned. Info: **Nancy Katzen**, 610.780.5667 or [elversoncontra.org](http://elversoncontra.org)

### Shepherdstown Dance • Shepherdstown, WV *1<sup>st</sup> Saturdays • 7:30-11 pm*

**October 30—Special Halloween Dance** (No dance November 6<sup>th</sup>) **Susan Petrick** calls a lively selection of contra dances to the music of the *The Opportunists*. Held at the War Memorial Building. Beginners workshop at 7:30, dance starts at 8 pm. All levels welcome, no partners needed. Please wear clean, soft-soled shoes to protect the floor. \$10 adults, \$7 SMD members, \$4 dancers under 12. [www.smad.us](http://www.smad.us).

### Baltimore Dance • Pikesville, MD *2<sup>nd</sup> Saturdays • 6:30-11*

**November 13—David Giusti** calls to *Montage*. NO organized pot-lick prior to the dance. The Baltimore Folk Music Society presents American Square and

## Dances continued

Contra Dancing on the second Saturdays. Admission \$9 BFMS members and affiliates, \$13 non-members. Under 21 and full-time students with ID: \$4 members, \$6 non-embers. Beginners, singles, couples, and families are welcome. **For more information, call the BFMS hotline at 888-646-BFMS, or call Becca at 301.606.7115.** The dance is held at St. Marks on the Hill, 1620 Reisterstown Road.

### Reston Contra Dance • Reston, VA 2<sup>nd</sup> Saturdays, November, January, February, and March

**November 13** -Greg Frock calls to the music of the **June Apple Band** at the first of FOUR winter contra dances at the Reston Community Center. **No dance in December.** Beginners' workshop 7:15-8 dance 8-10:45. Admission: \$8 (workshop free). Partner not necessary. Snacks to share at the break welcome. (nonalcoholic drinks provided). Reston Community Center, 2310 Colts Neck Rd., in the Hunter Woods Center. **Info: anote20@gmail.com**

### Annapolis Contra and Square Dance • Annapolis, MD

3<sup>rd</sup> Saturdays • 7-10 pm

**November 20**—Janine Smith will teach and call to the dynamic music of Leah Weiss on fiddle, Gary Wright on guitar, and Neil Harpe on banjo. Free introductory session at 6:30 pm. All dances taught and walked through. All ages welcome. \$10 with discounts for seniors, students, families and members of Annapolis Traditional Dance Society (ATDS). Snacks to share at the break are welcome! Friends Meeting Hall, 351 DuBois Rd. **Info: Jan Scopel at 443.540.0867, janscope@hotmail.com or www.contradancers.com/atds**

### Lancaster Contra Dance • Lancaster, PA 3<sup>rd</sup> Saturdays, 8-11 pm

**November 20**—Bob Nicholson calls to Eileen Nicholson at St John's Episcopal Church, 321 W Chestnut St; Beginners workshop 7:15, dance 8-11 pm. \$8/\$5. Special waltz workshop by orientation 6:30-7:30. **Info: Shane 717.538.5833 or http://www.lancastercontra.org.**

### Fiddle Retreat Contra • Shepherdstown, WV November 20 • 7:30 pm

**Anna Rain** calls contras, squares and a variety of dances to the **Fiddle Retreat Open Band.** \$10 adults, \$7 SMD members, \$4 dancers under 12. **For info: www.smad.us.**

### Frederick Contra Dance • Frederick, MD 4<sup>th</sup> Saturdays • 8-11 pm

**November 27** Perry Shafran calls to tunes provided by **Devine Comedy.** Dances are held at the Trinity School, near Harry Grove Stadium. Free beginners'

workshop at 7 pm, dance begins at 8. Adults, \$9, students \$5, 12 and under \$4. **Info/directions: www.contra-dancers.com or call Boe Walker at 301.694.6794.**

## English Country

*Mondays*

### Baltimore Folk Music Society • Pikesville, MD Mondays • 8-10:30 pm

English Country Dancing is lively movement to elegant music in a friendly informal setting. All dances are taught and walked through. New dancer orientation first Wednesday at 7:45. Admission \$ 8 Members, \$11 Non-members, \$2 student discount. St. Mark's on the Hill Parish Hall, 1620 Reisterstown Rd, 0.5 miles from Balt. Beltway Exit 20 South. **Info: Carl Friedman at 410.321.841 or engdance@bfms.org**

#### November

- 1 Post-Halloween Party! Come dressed as your favorite dance! A potpourri of callers will attempt to guess your dance, and we'll dance it! Music by **Rhonda Hotop, Robin Wilson, and Melissa Running**
- 8 Caller **Mike Franch** with **Carl Friedman, Marty Taylor, and Judith Bourzutschky**
- 15 Caller **Carl Friedman** with music by **Dave Crandall, Paul Oorts, and Jonathan Jensen**
- 22 Caller **Diane Schmit**, with music by **Emily Aubrey, Marty Taylor and Liz Donaldson**
- 29 Caller **Sharon McKinley** with the **Geud Band of Baltimore**

*Saturdays*

### The Leesburg Assembly • Centreville, VA 3<sup>rd</sup> Saturday, 7:30-10:30 pm

Come join us for English Country dancing in a relaxed setting with live music. All dances taught and walked through. We welcome new dancers. Admission is \$10. **Info: www.TheLeesburgAssembly.org or call David Pacelli at 703.757.8648.** Check the website for September.

## THE FSGW ENGLISH COUNTY DANCES ARE LISTED ON PAGE 4

*Saturdays*

### English Country Dance • Silver Spring, MD Saturday, November 13 • 8 - 10:45 pm

At Glen Haven Elementary School, 10900 Inwood Ave. (Parking and entrance in rear). Dance to music by **Peascods Gathering**; calling by special guest caller, **Martha Siegel.** Beginners and singles welcome. \$5.

**Dances continued**

Info: Carl Minkus 301.493.6281 (cminkus@verizon.net), Bob Farrall 301.577.5018.

**International***Sundays*

**Alpine Dancers • New Carrollton, MD**  
**Sundays, November 7, 21 • 4-6:30 pm**

Looking for energetic beginners. Free, open practice at New Carrollton Municipal Center, 6016 Princess Garden Pkwy. Alpine Dancers are a performing and teaching folk dance group specializing in graceful and lively couples and trio dances from Austria, Germany, and Switzerland. Recorded music. Info/dir: caroltraxler@yahoo.com, 301.577.3503, www.alpinedancers.org

*Mondays*

**Bethesda International Folk Dancers • MD**  
**Mondays • 7:30-10 pm**

No partner necessary, all ages and levels of expertise welcome. Beginners: 7:30-8:10. Intermediate/Adv: 8:10-10pm. Mostly recorded with occasional live music. Beautiful wood floor. Held at the Lawton (formerly Leland) Center, 4301 Willow Ln. Classes here require registration with Montgomery County. Forms available at the class. \$7 per class. Info: Phyllis or Brandon Diamond at 301.871.8788, www.diamonddancecircle.com, or diamonddancecircle@comcast.net

*Tuesdays*

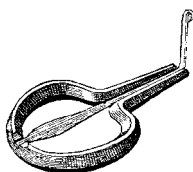
**Arlington International Folk Dancing • VA**  
**Tuesdays • 8-10 pm**

Key Elementary School, Veitch St., between Wilson and Key near Courthouse Road Metro. Folk Dance for Fun. Admission \$5, recorded music, instruction, walk-throughs, and requests. Singles welcome, all ages or levels of expertise. Info: Sam or Sarah 703.527.8998 or sstulberg@earthlink.net or Kent Hibben at 301.520.3794 or KentLHibben@hughes.net

*Wednesdays*

**Columbia International Folk Dancing • MD**  
**Wednesdays, • 8-10:30**

Meetings are from 8-10:30 at Kahler Hall with dancing at 8:30. Cost: \$5, Senior, \$3. Info: Ethel at 410.997.1613, or Ed at 410.740.2309. www.columbiafolkdancers.org



Send all Newsletter submissions to: newsletter@fsgw.org

*Thursdays*

**Chevy Chase International Folk Dancers**  
**• Washington, DC**

**Thursdays • 7:30-9:30 pm**

Chevy Chase Community Center, 5601 Connecticut, NW (at McKinley). Instruction and walk-through until 8:30. All levels welcome, no partner necessary. Recorded music. Leader: Roland Forbes. For info: Naomi Rogers at 301.438.0063

**Circle Dance • Arlington, VA**

**Thursdays • 7:45-9:45 pm**

Come and explore dances from all over the world in a spirit of meditation and joy. All dances are taught. Recorded music. Unitarian Universalist Church of Arlington, corners of Rte 50 at George Mason Dr. Donation requested. Info: Judie David at 703.451.2595 or Vedavid@starpower.net.

**Mount Vernon International Folk Dancing**  
**• Alexandria, VA**

**Thursdays • 8-10 pm**

Beginners to advanced - all are welcome! Easy dances 8-8:30, followed by requests and advanced instruction. Join our friendly, diverse group on a beautiful dance floor. No partner necessary. Donation \$3. Mt Vernon Unitarian Church, 1909 Windmill Lane. Info: Patricia at 703.535.333., or pdw@patriciadaywilliams.com

*Fridays*

**Greenbelt International Folk Dancing • MD**  
**Fridays • 8:15-10:45 pm**

Greenbelt Community Center Dance Studio, 15 Crescent Rd. Focus is dance from Eastern Europe and Scandinavia. No partner or experience necessary. Beautiful dance floor. Teaching 8:15-9, requests from 9-10:45. \$7; \$10 on 1<sup>st</sup> Fridays (live music). Info: Larry Weiner at 301.565.0539, larry@larryweiner.com

**Irish**

**CCE Monthly Ceili • Herndon, VA**  
**Saturday, November 13 • 7-11 pm**

Music by *The Bog Wanderers Ceili Band* and friends. Dance instruction by Marilyn Moore. Beginners to advanced welcome. CCE members \$12/\$6/\$25 family max. Nonmembers \$15/\$7.50/\$35 family max. Refreshments. Frying Pan Park Visitors Center, 2739 West Ox Rd, Herndon, VA 703.521.4340 or cceptomac.org.

**Israeli**

**Israeli Dancing • Chevy Chase, MD**  
**Tuesdays • 7:00pm to 10:15 pm**

Beginners from 7pm to 7:45pm. The group focuses on building a repertoire of both classic and newer Israeli dances in a friendly, welcoming atmosphere. Record-

## Dances continued

ed music. Light refreshments are served. Ohr Kodesh Congregation, 8300 Meadowbrook Lane, Chevy Chase. \$8/adults, \$6/students. Info: **Mike Fox** at 240-424-0805. [www.markidmike.com](http://www.markidmike.com)

### Israeli Dancing • Greenbelt, MD *Saturday, October 23 • 8-11:15 pm*

Israeli "Oldies" party (dances before 1990). Recorded music, light refreshments. Greenbelt Community Center, 15 Crescent Road. \$7. Info: **Ben Hole**, 301.441.8213  
(Note: *The Wednesday Israeli Dance has been cancelled until a new location is found*)

## Morris

### Arlington Northwest Morris • Arlington, VA *Mondays • 7:30-9 pm*

Learn and perform the traditional Morris dances of Northwest England which combine simple footwork with power and precision. We are a welcoming group of women who practice in a great place with a wooden floor (easier on your knees) at the Unitarian Universalist Church. Info: [suzelise@comcast.net](mailto:suzelise@comcast.net) or [nwdancers@comcast.net](mailto:nwdancers@comcast.net)

### Rock Creek Morris Women • Silver Spring, MD *Wednesdays • 7:45-9:45 pm*

Learn to dance in the ancient English Morris tradition, and you'll get all the aerobics you need. Join a strong community that dances, plays, sings, and drinks together. Montgomery Knolls Elementary School, 807 Daleview Dr. Info: 301.927.6373, [louiseneu@earthlink.net](mailto:louiseneu@earthlink.net) or [www.uswet.com/RCMW.html](http://www.uswet.com/RCMW.html)

### Foggy Bottom Morris Men • Silver Spring, MD *Thursdays • 8-10 pm*

Experience the vigorous thrill of the Morris and the camaraderie of a Morris team! Learn and perform dances from English Cotswold villages, Mummer's Plays and occasional long-sword dances. We welcome new and slightly used dancers to our practices at Highland View Elementary School, 9010 Providence Ave and/or at the pub afterwards. [squire@fbmm.org](mailto:squire@fbmm.org), **Andrew Marcus** 617.721.0146, [www.fbmm.org](http://www.fbmm.org)

## Scandinavian

### Scandinavian Dance • Greenbelt, MD *Saturday, November 20 • 7 - 10 pm*

Scandia DC sponsors a 3rd Saturday dance. This month live fiddle music will feature **Göran Olsson**, a talented fiddler from Jämtland, Sweden. **Karen Myers** will play for the teaching. There may be some recorded music. No partners necessary. Teaching 7-8: Waltz Variations (*Snoa til Valsmelodi, Vinglevals*). Greenbelt Community Center Dance Studio (wood floor), 15 Crescent Rd. \$7 Info: 202.333.2826, [linda@scandiadc.org](mailto:linda@scandiadc.org), [www.scandiadc.org](http://www.scandiadc.org).

### Norwegian Dance & Potluck • Takoma Park, MD *Sunday, October 31, potluck 5:30 pm, dancing 7 pm*

Norwegian-style house parties. November party's a few hours early to celebrate Halloween—costumes encouraged. Both dates will have brief early sets by legendary Norwegian-American family band **The Bernertsons** ([www.berntsons.com](http://www.berntsons.com)), audio-recorded for their upcoming CD. Easy dances. Then hostess **Loretta Kelley** will play mesmerizing music on the unique Hardanger fiddle (w/sympathetic strings under the bowed strings—see [hfaa.org](http://hfaa.org)). Beginners & listeners welcome. No need to bring a partner. Bring clean shoes to wear, food to share, and \$\$ you can spare. Host phone just in case: 301.270.4925. Info/dirs: <http://MAND.fanitull.org> or **Jenny**, [pi@xecu.net](mailto:pi@xecu.net), 301-371-4312. (6807 Westmoreland Ave.)

## Scottish

### Scottish Country Dance • Bethesda, MD *Mondays • 8-10 pm*

NIH Building T-39 (Dance and Aerobic Center). \$5 Call/email in advance for directions. Info: **John MacLeod**, 301.622.5945 or [blackolav@cs.com](mailto:blackolav@cs.com)

### Scottish Country Dance • Greenbelt, MD *Tuesdays • 8-10 pm*

Dance all year round at the Greenbelt Community Center \$5 Info: [www.rscds.greaterdc.org](http://www.rscds.greaterdc.org) or **Jay Andrews** at [andrewj@erols.com](mailto:andrewj@erols.com) or 703.719.0596

### Scottish Country Dance • Alexandria, VA *Wednesdays • 8-9:45 pm*

Learn Scottish dance at the Durant Center, 1605 Cameron St. \$5 Info: [lara.bainbridge@gmail.com](mailto:lara.bainbridge@gmail.com), or [elanyi@cox.net](mailto:elanyi@cox.net).

## Swing/Blues

### Slow Blues and Swing • Glen Echo, MD *Thursdays, November 4, 11, 18 • 8:15-11:30 pm*

Popular Thursday night Blues Dance in the "back room". Come early as it is selling out. Beginner lesson at 8:15-9, Presented by Capital Blues. DJ **Mike Marcotte** and guests play incredible blues from 9 to 11:30 pm. Admission is \$8 for lesson and dance. Sprung solid maple floor, plus heating and air conditioning! Info: **Donna Barker** at 301.634.2231 or 301.634.2222 or [www.CapitalBlues.org](http://www.CapitalBlues.org) 7300 MacArthur Blvd. 20812 [www.DanceDC.net](http://www.DanceDC.net)

### Swing • Glen Echo Park, MD *Saturday, November 6 • 8-12 am*

Washington Swing dance in the Spanish Ballroom. The hour beginner lesson at 8 pm by is followed by dancing to **Peter Davis and Lindy Hop Heaven** from 9-12 am. Admission is \$15 Info: [www.wsdc.org](http://www.wsdc.org), or [wscswings@yahoo.com](mailto:wscswings@yahoo.com)

## Dances continued

### Waltz & Tea Dance

#### Afternoon Waltz • Glen Echo Park, MD Sundays, November 7 and 21 • 2:45–6 pm

A lively mix of folk waltzes with a few other couples dances including the Hambo, Schottische, Swing, Tango, and Polka. 45 minute lesson at 2:45, starting with a beginner's lesson and ending with an advanced lesson in the last 15 minutes. Dance from 3:30–6 pm. Admission is \$10. Go to [www.WaltzTimeDances.org](http://www.WaltzTimeDances.org), or call Glen Echo Park at 301-634-2222.

#### November

- 7 Music by *Footloose* in the Spanish Ballroom. **Lisa Brooks** and **Dan Kahn** will teach a free Hambo workshop after the waltz from 6–7 pm.  
21 Music by *Notorious* in the Spanish Ballroom.

#### Tea Dance • Glen Echo Park, MD Sundays, November 14 & 28 • 3–6 pm

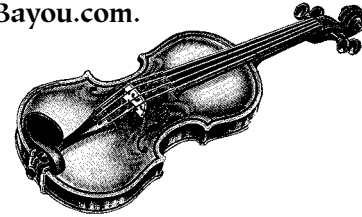
*Hot Society Orchestra of Washington*, features music and dancing from the '20s, '30s and '40s. Foxtrot,

two-step, waltz, cha cha, rumba, swing and more in the Spanish Ballroom. No partner or experience necessary. Basic tango lesson on the 14<sup>th</sup>, and rumba lesson on the 28<sup>th</sup>, both at 3:00. \$12 Info: [www.glenechopark.org](http://www.glenechopark.org) and [www.hotsociety.net](http://www.hotsociety.net)

### Zydeco/Cajun

#### Zydeco Dance • Glen Echo Park, MD Sunday, November 14 • 3–6 pm

Join us for a Cajun dance in the Bumper Car Pavilion featuring **Johnny Ace** and **Sidewalk Zydeco**. The 30-minute Cajun dance lesson given by **Michael Hart** and **Sharon Schiliro** begins at 3 pm with dancing from 3:30–6 pm. Admission is \$15. No partner required. For info: **Michael Hart** at 301.762.6730, or [www.DancingbytheBayou.com](http://www.DancingbytheBayou.com).



## Dance Classes

#### Hambo Workshop • Glen Echo, MD Sunday, November 7 • 6:15 – 7 pm

This is a special opportunity to learn Hambo, between the Sunday Afternoon Waltz and the Sunday Night Contra, in the Spanish Ballroom. **Lisa Brooks** and **Dan Kahn** will hold the second of two teaching sessions; those who attended the first or have some Hambo experience are welcome to attend. No partner necessary; beginner and advanced dancers welcome. Wear smooth-soled shoes for turning, not running shoes. Free with paid admission to the Sunday Afternoon Waltz or the Sunday Night Contra Dance. Info: **Lisa Brooks** at 240.731.1935, or [www.HamboDC.org](http://www.HamboDC.org).

#### Scandinavian Dance Classes • Bethesda, MD Tuesdays • 7:30 – 9:30 pm

Beginning Classes: November 9

Advanced Classes: November 16 and 30

Beginners learn Hambo, Schottish, Waltz, Zwiefacher, and other couple turning dances. Advanced dancers learn *Boda*, *Orsa*, *Föllinge*, *Gothenburg Mazurka*, *Finnskogspols*, *Nigpolska*, *Gammalvånster*, *Telespringar*, and requests. Sometimes live music. Wear smooth-

soled shoes for turning, not running shoes. \$5. Info: **Lisa Brooks** at 240.731.1935, [lisa@HamboDC.org](mailto:lisa@HamboDC.org), or [www.HamboDC.org](http://www.HamboDC.org).

**Directions:** Enter NIH at Wisconsin Av. and the new Gateway Drive Visitor Entrance (south of South Dr., reachable ONLY from the north on Wisconsin Av.). Park there, or drive to the south center of NIH and park in NIH permit parking next to Building T-39. Or walk 12 minutes from the Medical Center metro stop. See map at [www.hambodc.org](http://www.hambodc.org).

#### Clogging & More! Dance Classes • Washington DC Thursdays 7:30–8:30 pm

Taught by **Emily Crews** of *Footworks Percussive Dance Ensemble*, using technique drills as a jumping-off point, traditional steps and combinations will be taught, and students will also learn how to incorporate their own rhythms within an improvisational structure. Other percussive dance styles will also be introduced. Some experience with learning footwork is helpful but not necessary. Wear tap shoes or hard-soled shoes. DC Dance Collective is located at 4908 Wisconsin Avenue NW, Washington, DC 20016. Further info including pricing: [www.dcdancecollective.com](http://www.dcdancecollective.com) 202.362.7244.



# Jams/Open Mics/Audience Participation

*Listed by day of the week  
(Sunday thru Saturday)*

*Sundays*

## Scottish Traditional Music Jam • Wheaton, MD *1<sup>st</sup> Sundays • 3-6 pm*

Scottish traditional music jam, first Sundays, Royal Mile Pub, 2407 Price Avenue. Musicians welcome. Info: <http://dcscottishsession.blogspot.com/> or contact Peter Walker at [boghadubh@gmail.com](mailto:boghadubh@gmail.com).

## Sacred Harp Sing • Sandy Spring, MD *3<sup>rd</sup> Sundays • 4-6 pm*

Sing followed by potluck. Contact Kent Beck at 301-774-3183 or [kent.beck@ssfs.org](mailto:kent.beck@ssfs.org) to confirm. Location: Small schoolhouse behind Community Building, 17801 Meetinghouse Road.

## CABOMA Jam • Arlington, VA *2<sup>nd</sup> and 4<sup>th</sup> Sundays • 2 pm*

Capitol Area Bluegrass and Old-Time Music Association (CABOMA) holds jams the 2<sup>nd</sup> and 4<sup>th</sup> Sundays of each month. Lyon Park Community Center, corner of N. Filmore and Pershing. Info: Dave at 301.274.3441.

## Annapolis Acoustic Jam • Annapolis, MD *Sundays • 9 am-Noon*

Indoors at The Visitor Center, Quiet Waters Park. Info: [phyllis@saroffillustration.com](mailto:phyllis@saroffillustration.com).

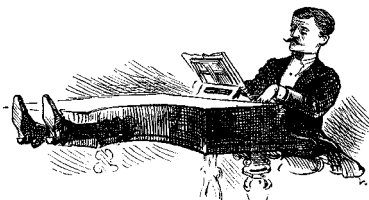
*Mondays*

## Balkan Singing • Takoma Park, MD *Every Monday • 8 pm*

Informal singing group, Sedenka, meets in Northwest DC/Takoma Park to sing Balkan village songs. Interested novices welcome. Info: Katya, 301.270.4175 or [Katya@partan.com](mailto:Katya@partan.com) or Joan at 202.363.6197.

## DC Bluegrass Union VFW Bluegrass Jams • Takoma Park, MD *1<sup>st</sup> & 3<sup>rd</sup> Mondays • 7-10 pm*

Free. Non-smoking. At Veterans of Foreign Wars Post 350, 6420 Orchard Ave. (corner of 4<sup>th</sup> Ave), near New Hampshire and Eastern. Info: VFW Post 350 at 301.270.8008 or Barb Diederich [barb@barbdiederich.com](mailto:barb@barbdiederich.com).



*Tuesdays*

## Sea Chantey Open Pub Sing • Wheaton, MD and Washington, DC

*1<sup>st</sup> and 4<sup>th</sup> Tuesdays • 8 pm*

*The Ship's Company* chanteymen host open mike sea chantey sings. No cover/minimum; arrive early for a table. Participation encouraged but not mandatory. Requests are honored if possible. Mostly a *cappella* but instruments are welcome. Info: Myron Peterson at [rusic@yahoo.com](mailto:rusic@yahoo.com) or [www.shipscompany.org](http://www.shipscompany.org).

November 2 – At Royal Mile Pub, 2407 Price Avenue, Wheaton.

November 23 – Laughing Man Tavern, 1306 G St NW, DC (across 13<sup>th</sup> St from Metro Center station).

## Folk Club of Reston/Herndon • Herndon, VA *Tuesdays • 7:15 pm*

Tortilla Factory, 648 Elden Street. Open mic format. 2<sup>nd</sup> Tuesday includes 25-minute member showcase; monthly concerts usually 3<sup>rd</sup> Tuesday, price varies. Smoke-free environment. Info: [www.restonherndon-folkclub.com](http://www.restonherndon-folkclub.com), 703.435.2402.

## Cajun Jam • Greenbelt, MD *4<sup>th</sup> Tuesdays • 6-9 pm*

Monthly open Cajun jam and dance. New Deal Café, 113 Centerway, Roosevelt Center. More info: 301.474.5642 or [www.newdealcafe.com](http://www.newdealcafe.com). Check website to confirm.

*Wednesdays*

## Sea Chantey Open Pub Sings • Baltimore and Annapolis, MD

*2<sup>nd</sup> & 3<sup>rd</sup> Wednesdays • 8 pm*

*The Ship's Company* chanteymen host open-mike sea chantey sings. Participation encouraged but not mandatory. Requests are honored if possible. Info: Myron Peterson at [rusic@yahoo.com](mailto:rusic@yahoo.com) or [www.shipscompany.org](http://www.shipscompany.org)

November 10 – Wharf Rat, 801 S. Anne Street, Baltimore (Fells Point)

November 17 – Galway Bay, 63 Maryland Ave, Annapolis 21401

## Arlington Jam! • Arlington, VA *3<sup>rd</sup> Wednesdays • 7-10:30 pm*

Fiddles, guitars, all instruments welcome! Intermediate and advanced players interested in old-time, blues, Scandinavian, swing, and other styles. First Friday and third Wednesday at 1909 N. Ohio St.. Info: Lilli Vincenz, 703.532.2731 or [FiddlerLilli@zzapp.org](mailto:FiddlerLilli@zzapp.org).

## Jams/Open Mics/Audience Participation continued

*Thursdays*

### Irish Traditional/Bluegrass Music Sessions • Frederick, MD

**Thursdays • 7 and 8:30 pm**

At **Boe's Strings**, 26 S. Market Street. Info and tune list at [www.BoesStrings.com](http://www.BoesStrings.com) or **Boe** at 301.662.0750.

*Fridays*

### Arlington Jam! • Arlington, VA

**1<sup>st</sup> Fridays • 7-10:30 pm**

See Wednesday listing.

### Glen Echo Open Band • Glen Echo, MD

**2<sup>nd</sup> Fridays • 8:30-11:30 pm**

The fabulous Glen Echo Open Band plays for the second Friday contra dance. All instruments and levels of ability are welcome. Find recordings, tune-book names and page numbers of tunes played by the Open Band at [www.openbandonline.com](http://www.openbandonline.com). The site works best using iTunes on a PC or a Mac. Info: [www.fridaynightdance.org](http://www.fridaynightdance.org).

*Saturdays*

### Archie Edwards Blues Jam • Riverdale, MD

**Saturdays • 1-5 pm**

The Archie Edwards Blues Heritage Foundation gathers for weekly Saturday afternoon blues jams. All skill levels welcome. 4701 Queensbury Rd., across the street from the Riverdale MARC train station, a few blocks east of Rte 1. Ample parking. Free, but donations welcome. Info/confirmation: 202.526.7539 or [www.acousticblues.com](http://www.acousticblues.com)

### Hammered Dulcimer Jam • Annandale, VA

**November 20 • 1:30-4:30 pm**

Hammered dulcimer players meet monthly to swap tunes and play together at the George Mason Regional Library, 7001 Little River Turnpike, Annandale, VA. 703.256.3800. Other acoustic instruments welcome. Info: **Ellie** at 703.578.3106 <http://pages.prodigy.net/holsopple>



## Storytelling

### Storytelling Concert • Baltimore, MD

**Saturday, November 20, • 8 pm**

The theme of The Baltimore Folk Music Society annual storytelling concert is "Wise Women, Winning Men, Fish Hooks and Born-Again Books:" The concert, part of the international Tellabration! celebration of storytelling, features storytellers **Allison Butlien, Philip Meeder, Chris Potts, Barbara Woodey, and Joan Zelinka, fiddler Emily Aubrey, and emcees Matthew-Daniel Stremba and Mike Franch.** For information, contact [Tellabration@bfms.org](mailto:Tellabration@bfms.org). North

Baltimore Mennonite Church, 4615 Roland Avenue (2 blocks north of Cold Spring Lane), 8 p.m. Admission is \$10 nonmember, \$8 for BFMS, FSGW, ATDS, and CDSS members.

### Kensington Row Story Salon • Kensington, MD

**1<sup>st</sup> Wednesdays • 7:30 pm**

Storytellers telling stories to adult audiences. Featured tellers and open mic for 6 minute stories. 3786 Howard Ave. 301.949.9416, or contact **Ellouise Schoettler** at [ellouise1@juno.com](mailto:ellouise1@juno.com) to apply.

## Workshops, Weekends, Festivals & Special Events

### Washington Revels Pub Sing • Falls Church, VA

**Sunday, November 7 • 6-9:30 pm**

At the Ireland's Four Provinces, 105 W. Broad St.. The evening begins with dinner, drinks, and camaraderie at 6 pm, then singing with songbooks and leaders from 7-9:30 pm. Seating is limited so advance ticket purchase is recommended. Advance tickets, adults \$16.50, youth (18 & under) \$11.50; at the door (space permitting) adults \$20, youth \$15. Order tickets online through [tix.com](http://tix.com) or mail a check to Washington Revels, 531 Dale Drive, Silver Spring, MD 20910.

### Quilters, A Musical • Bethesda, MD

**November -3 Weekends**

A cast of eight women accompanied by a six-piece orchestra perform the stories of prairie life through laughter, tears, tragedy and triumph. Included in the production are a display of vintage handmade quilts, and a silent auction of 16 original handmade quilts especially designed for this production. North Bethesda United Methodist Church, 10100 Old Georgetown Road. November 12, 13, 19 and 20 at 8 pm and November 14 and 21 at 2:30 pm. Minimum donation is \$10 per ticket. Please visit [www.northbethesdaumc.org](http://www.northbethesdaumc.org) for more info and reservations.

**Workshops, Weekends, Festivals & Special Events, continued**

**Upper Potomac Fiddle Retreat**

**• Shepherdstown, WV**

**Friday, November 19–Sunday, November 21**

Join some of our finest local fiddlers and special guests for a weekend featuring over 25 different workshops. The staff includes **Donna Hebert and Max Cohen** (French Canadian fiddle, guitar accompaniment), **Terpsichore, Bruce Sagan, Joe DeZarn, and Joe Hermann**. Saturday night contra dance features the weekend’s open band led by our instructors as well as jam sessions nearby. See [www.fiddlerretreat.info](http://www.fiddlerretreat.info), or call **Joanie Blanton** at 304.263.2531 or email [updf@earthlink.net](mailto:updf@earthlink.net).

**Terpsichore’s Holiday • Roanoke, WV**

**December 27–January 1**

A folk dance and music camp for ages 4 and up. Join us for 5 days and nights of dancing, singing, music-making, crafts, nature hikes, and 4 star accommoda-

tions. The camp typically features classes in contras, squares, waltz, longsword, Morris, English Country, and more. The program offers a full schedule of classes for adults and teens. The children’s program includes dance skill in a fun environment, plus art, nature walks, singing and more. Featured this year: **David Millstone, The Avant Gardeners, Steve Hickman, John Devine, DeLaura Padovan, Leslie Milbourne, Henry Chapin, Betsy Blachley, Laurie Madden, Joe Fallon, Gaye Fifer, Bill Wellington, Lorie Lichtenwalner** and more! For more info and to register, [www.danceholiday.net](http://www.danceholiday.net).



**DAYLIGHT SAVINGS ENDS  
NOVEMBER 6TH!  
SET YOUR CLOCKS BACK  
ONE-HOUR!**

**The Folklore Society Goes Social!**



In addition to our e-newsletter, we are renovating our website ([www.fsgw.org](http://www.fsgw.org)), revamping our Facebook pages, <http://www.facebook.com/pages/Folklore-Society-of-Greater-Washington/138762619501394> and Tweeting our hearts out. If you come across our publicity — in a Facebook ad, a newspaper article, graffiti on the Metro, wherever — please email [publicity@fsgw.org](mailto:publicity@fsgw.org) so that we know how we’re getting the message of folk out; and if you have pictures of Folklore Society events—dances, concerts, rollicking good times—please send them to [publicity@fsgw.org](mailto:publicity@fsgw.org).

**FSGW Newsletter  
Editorial Policy**

The Folklore Society of Greater Washington endeavors to print copy it deems relevant to its membership and purpose as stated in its by-laws:

*“The main purpose of the Society is to further the understanding, investigation, appreciation, and performance of the traditional folk music and folklore of the American people.”*

- All copy (except ads) must be submitted by e-mail to [newsletter@fsgw.org](mailto:newsletter@fsgw.org) in text format in the body of the email by the 10th of the preceding month.
- Please review comparable entries from the Newsletter and edit accordingly.
- The Editor reserves the right to edit or omit copy as necessary.

**Editor: Roxanne Watts • [newsletter@fsgw.org](mailto:newsletter@fsgw.org) • 703-618-1799**

**Design & Layout: Jennifer Woods GRAPHICS • Silver Spring, MD • 301-587-7174**

**FSGW AD POLICY**

**Editorial Policy for Ads:** Ad content must be reviewed and approved by the editor. Please refer to the editorial policy. Basic Charges: 1/4 page ads(3.4” x 4.5” or 7.25” x 2.5”): \$65 for one month, \$120 for two. Commercial business:\$8 for 10 words. Non-commercial and individual \$4 for 10 words. 25% discount for any single ad placed in 11 consecutive issues (one year) and paid in advance. We will work with you on larger ads. Copy, with check made payable to FSGW must be received by the newsletter deadline. **Mail to the Editor: Roxanne Watts, 12190 Abington Hall Place, #202 / Reston, VA 20190**

**SING HEALTHY!** Learn how to preserve and maintain your vocal instrument for life. **LEARN TO PLAY THE BODHRAN!** Barbara Ryan (IONA’S lead singer) Studio in Fairfax Station, VA 703.426.1450, [ionavoic@pobox.com](mailto:ionavoic@pobox.com)

PAID ADVERTISEMENT

## Time is of the Essence Help is Needed for Archiving FSGW Materials for the Library of Congress

Our body of fragile, historical materials, —tapes, newsletters, and videos— has been accepted by the Library of Congress, so that all of the significant contributions FSGW has made to the folk world will be preserved. But these items must be fully cataloged before being accepted. **Pat McGee** has been working diligently on this project and will handle the technical stuff. One thing he has done is to start an on-line home for all the back issues of the FSGW newsletter and other documents—you can view them at [www.fsgw2.org](http://www.fsgw2.org). Now he needs assistance in recruiting and organizing people to assist him and to monitor progress. This is far too large a project for one person, and there are many ways to help, so please consider donating some time to this effort while our materials are still intact. For a more complete status report and explanation please contact **Pat** at **703.356.9678**, or **archive** at [fsgw.org](http://fsgw.org).

## Driving & Mass Transit Directions to Frequent Venues:

### Glen Echo Park, MD • Spanish Ballroom/Bumper Car Pavilion

**7300 MacArthur Blvd. At Goldsboro Rd., Glen Echo, MD**

FROM THE BELTWAY:

**Maryland Side:** at 2-lane Exit 40 take the left fork for the Cabin John Parkway. Where Cabin John merges with the Clara Barton Parkway, move into the left lane, under the overhang. Then follow instructions in MD&VA, below.

**Virginia side:** Get into the far right hand lane at the top of the bridge. At the first fork, bear right. Stay in the left lane; watch for Cabin John traffic merging from the right at the overhang. Then follow instructions in MD&VA, below.

**MD&VA:** Watch for signs to MacArthur Blvd. Make a very sharp hairpin turn and move immediately into the right lane. At the T intersection/stop sign, turn left onto MacArthur Blvd. The Upper parking lot is on the left. For the lower parking lot, go around the small traffic circle and make the first left onto Oxford St. **Be SURE to come to a COMPLETE STOP at the Stop Sign!!!!**

**By PUBLIC TRANSPORTATION:** Take the #29 Bus from the Friendship Heights Metro Station. Ask the driver to let you know when to get off for Glen Echo Park. The bus stops running before the last dance ends. Ask the dance coordinator to announce that you need a ride. We've never left anybody at the Park. Last bus leaves Friendship Heights Metro at 7:30 pm.

### Glen Echo Town Hall

**6106 Harvard St., Glen Echo, MD:**

Same as for Glen Echo Park, save that Harvard Street is the THIRD left off of MacArthur Blvd. After the traffic circle.

**PLEASE NOTE:** Park in the lot behind the hall, on University Drive, or on the east side of MacArthur Blvd, **NOT** on Harvard St.

### Washington Ethical Society (WES) Auditorium,

**7750 16<sup>th</sup> St. NW, DC just south of the intersection of Kalmia Rd. & 16<sup>th</sup> St,**

**about four blocks inside the DC/MD line.**

FROM THE BELTWAY:

Take the Georgia Ave. (Rt. 97) South exit (31 south). Stay in either right lane. Go .4 miles from the exit ramp, going south on 16<sup>th</sup> St. South. Follow 16<sup>th</sup> Street past the light at East-West Highway (Rt. 410); go straight at the circle at the DC/MD line. Kalmia Rd. is the second light after the DC/MD line. WES is the second building on the right after Kalmia Rd. Parking is on Kalmia or 16<sup>th</sup> St.

**By METRO:** Red Line to Silver Spring Stop. Walk south on Rt. 29 Colesville Rd. to the traffic circle at 16th – go left down 16th four blocks to Kalmia Rd. and WES. An S-4 Metro Bus will deliver you to the corner of Kalmia Rd. and 16th.



# Folklore Society of Greater Washington

6 Sunnyside Road • Silver Spring, Maryland 20910  
[www.fsgw.org](http://www.fsgw.org)

PRESORTED  
FIRST CLASS MAIL  
US POSTAGE PAID  
ROCKVILLE, MD  
PERMIT #4297

Printed on recycled paper.

Address Service Requested

 FIRST CLASS

The Folklore Society of Greater Washington is a not-for-profit [Section 501(C)(3) of the IRS code] institution and we encourage the financial contributions of our members. Contributions in excess of annual dues are welcome and may be tax deductible. Please mail your gift to FSGW, c/o Jerry Stein, 3612 Greenway Place, Alexandria, VA 22302-2005. Subscriptions to the Newsletter are only available outside the Greater Washington Metro area.

**FSGW IS DEDICATED TO PRESERVING AND PROMOTING TRADITIONAL FOLK ARTS IN THE WASHINGTON, DC METROPOLITAN AREA. MEMBERSHIP IS OPEN TO ALL WHO SUPPORT THESE GOALS UPON PAYMENT OF ANNUAL DUES.**

## FSGW Membership Form

- RENEWAL     NEW ADDRESS     NEW MEMBERSHIP\*  
 I WANT ONLY THE ELECTRONIC COPY OF THE NEWSLETTER  
(NO PAPER COPY SENT)

	INDIVIDUAL	FAMILY
1 year	<input type="checkbox"/> \$33	<input type="checkbox"/> \$45
2 years	<input type="checkbox"/> \$62	<input type="checkbox"/> \$85
3 years	<input type="checkbox"/> \$91	<input type="checkbox"/> \$125
LIFE	<input type="checkbox"/> \$550	<input type="checkbox"/> \$800
Student	<input type="checkbox"/> \$25	

- Newsletter Subscription ONLY \$25**  
*Available ONLY to those living OUTSIDE the Greater Washington Metro area.  
Newsletter Subscription carries NO membership privileges.  
\*If you are a new member, where did you get this newsletter?*
- at Glen Echo Park (which event? \_\_\_\_\_)  
 Another FSGW Event (which one? \_\_\_\_\_)  
 From a friend who is a member  
 At my public library     Other \_\_\_\_\_

Name(s) \_\_\_\_\_

Address \_\_\_\_\_

City \_\_\_\_\_ State \_\_\_\_\_ Zip \_\_\_\_\_

Phone(s) \_\_\_\_\_

H: \_\_\_\_\_ - \_\_\_\_\_ - \_\_\_\_\_ W: \_\_\_\_\_ - \_\_\_\_\_ - \_\_\_\_\_

Email: \_\_\_\_\_

**May we list you in our Membership Directory?**  
(FSGW does not provide mailing lists to any other organizations.)

- Yes  No  
 Yes, but do not list my:  
 address     home phone     work phone     email



Send form and check made payable to FSGW to:  
FSGW Membership • 6 Sunnyside Road • Silver Spring, MD 20910