



NEWSLETTER

Volume 48, Number 9

www.fsgw.org

May 2012

HARMONIA

TRADITIONAL FOLK MUSIC OF EASTERN EUROPE



MONDAY,
MAY 21 • 8 PM

Harmonia presents the traditional folk music of eastern Europe, ranging from the Danube to the Carpathians. Its repertoire reflects the cultures of this region: Hungarian, Slovak, Ukrainian, Romanian, Croatian and Gypsy. Performing on authentic folk instruments, and styled after turn-of-the-century Eastern-European Gypsy bands, their music is drawn from both the urban and rural traditions of Eastern Europe.

The ensemble's performances evoke the full range of human emotions, interspersing fiery, passionate virtuosity with soulful melancholy and nostalgic yearning. They have been called "a musical gem" by National Public

Radio. The musicians come from varied East-European backgrounds; in *Harmonia* they have found a common musical language. *Harmonia* brings to the concert stage the vitality and excitement of ethnic weddings, celebrations, and smoky cafés that inspired composers such as Bartok, Brahms and Liszt. Whether performing in these traditional settings or in concert halls, the group's members stay close to their roots.

The ensemble uses instruments as varied as accordion, upright bass, violin, panflute, and cimbalom (the Eastern-European 125 string hammered dulcimer). Their technical brilliance only adds to breathtaking performances; dizzying cimbalom solos coupled with soaring violin lines, haunting flute and accordion solos and soulful vocals are a joy by any standard. In addition to being polished performers, *Harmonia's* members are adept at explaining their music and culture.

Harmonia is **Walt Mahovlich** (accordion); **Alexander Fedoriouk** (cimbalom); **Beata Begeniova** (vocals); **Steven Greenman** (violin); **Jozef Janis** (violin); **Andrei Pidkivka** (pan flute, folk flute); **Branislav Brinarsky** (bass, fujara, gaidice, vocals); **Ken Javor** (bass).

At the **Washington Ethical Society, 7750 16th St., NW, Washington, DC 20012**. Reservations: glen.echo@erols.com (preferred) or **301.717.4641** only until Sunday, May 20. **Members \$15. Non-members \$20.**

In this Issue:

Page 3-7: FSGW Dances, Dances, Dances!!!!

FSGW Sings/Swaps & Co-sponsored Events

FSGW OPEN SING • TAKOMA PARK, MD FRIDAY, MAY 4 • 8:30 PM

Fandango! The Open Sing for May will be held at **Kathie Mack's** craftsman bungalow, and although there won't be enough room to actually DO any dancing, the theme for the evening is Dance, so bring songs for and about dancing . . . and "Save the Last Dance for Me!" Kathie lives in Old-Town Takoma Park, three blocks from the Takoma Metro. Please call **301.270.5367** or e-mail her at **twizzles@starpower.com** for directions.

FSGW GOSPEL SING • BETHESDA, MD SUNDAY, MAY 13 • 4-8 PM

Gospel Sings are held the second Sunday of every month at various homes. Singing starts at 4 and breaks for a covered dish at 6, with more singing after supper. Everyone is welcome! This month's Gospel Sing will be at the home of **Larry Cope**. Info/directions: **301.718.6564**

FSGW STORYSWAP • COLUMBIA, MD SATURDAY, MAY 19 • 7:30 PM

Storytellers and listeners are invited to the home of **Marc Young** for an evening of shared stories and potluck snacks. Expect to meet some members of 4th at 4 Story Folks as well. Free. Email **bshert951@hotmail.com** for RSVPs and directions.



SACRED HARP SINGING ARLINGTON, VA SUNDAY, MAY 27 • 4-8 PM

Monthly on the fourth Sunday, singers enjoy the unaccompanied harmonies of the old-time shape-note hymns and fugues in the 1991 edition of the original *Sacred Harp* and 1958 *Christian Harmony* (loaner books available), with a potluck supper break from 6-7. St. Peter's Episcopal Church, 4250 North Glebe Rd., 22207. All are welcome. Info: **301.229.8534**.

Directions: St. Peter's is one-half mile south of Chain Bridge, on the west side of Glebe Road (crossing from Washington, on your right, from Virginia, on your left; from the Beltway, take the GW Parkway south to 123 north, then right at the T to Glebe). Look for the FSGW signs. Turn on Tazewell St. to reach the parking lot.

CO-SPONSORED

GALA IN THE PARK – GLEN ECHO, MD SATURDAY, MAY 19, 6PM-12M

The 10th Annual Glen Echo Gala in the Park is a fundraiser for GEPPAC, partner for our Sunday night dances and for the Washington Folk Festival. Opening reception is in the Bumper Car Pavilion, followed by seated dinner, presentations, auction and dance to the *Daryl Davis Band* in the Spanish Ballroom. Tickets are \$200. Event and ticket information is available at **www.glenchopark.org** or **301.634.2222**.

GLEN ECHO INTERNATIONAL FOLKDANCERS • MD THURSDAYS, 7:30-10:45 PM

Every Thursday at the Church of the Redeemer, 6201 Dunrobbin Dr. (just west of the shopping center across from Glen Echo Park). Lesson at 7:30. Request dances from 9 to 10:45. Mostly recorded music. No partner/experience necessary. Wear comfortable clothing and soft-soled shoes. Adm. \$5. Info: **Jamie** at **301.466.3018** or **dancingplanet@erols.com**



LISA NULL is accepting a few new voice students: basic vocal techniques, coaching in traditional styles. Downtown Silver Spring. Contact: **enul@starpower.net** or **301.587.2286**

PAID ADVERTISEMENTS



The Folklore Society of Greater Washington presents the annual

Washington Spring Ball

Saturday, May 19, 2012



Conference Center at Cherry Hill Park
9800 Cherry Hill Road, College Park MD

Music by:

Andrea Hoag, fiddle *Julie King*, piano
and *Ralph Gordon*, cello



Practice Session, 2:30-4:30 p.m. at the Conference Center at Cherry Hill Park
followed by: Potluck Dinner

Reception 7:00 p.m.



Dance 7:30 – 11:00 p.m.

Light refreshments served during the break

The Program

Elizabeth
Gigue for Genny
Grimstock
Leather Lake House
Mendocino Redwood
Michael and All Angels
Mr. Lane's Magot

Muriel's Measure
O, Susato
Playing (in) the Field
Quite Carr-ied Away
The Ragg
Red House
Round About Our Coal Fire

Slaughterhouse
Sun Assembly
Take a Dance
Trip to Florence
Two Cousins

At the ball, dances will be prompted for a few rounds, but not walked through. Work scholarships are available.
For more information, E-mail Registrar@bronord.com or call Laura Parsons, Ball Chair, at 703-835-7822

Send registration to:
Roger Broseus
10411 Farnham Drive
Bethesda, MD 20814-2219



Directions to the pre-ball practice and Ball will be mailed with the program booklet or E-mailed with confirmation notice.



The Folklore Society of Greater Washington's 2012 *Washington Spring Ball*

Name(s) as you wish them to appear on name tag(s) _____

Address _____ Phone _____

City _____ State _____ Zip _____ E-mail _____

Reserve ___ places at \$32** for members of FSGW BFMS CDSS Student (1/2 price)

Reserve ___ places at \$35** for nonmembers Student (1/2 price)

Overnight hospitality needed. Allergies? _____ Nonsmoking Separate beds Can house ___ people.

****Note: add \$6 per person (\$3 for students) for registrations post-marked after 5 May 2012.**

Reserve a place by mailing a check, payable to FSGW. To get a program booklet by return mail, enclose a self-addressed, business-size envelope with 45¢ postage (plus an additional 20¢ stamp for each dance booklet after the first); if no SASE is provided, booklet(s) will be held at the door.

FSGW English Country Dances

at Glen Echo Town Hall, MD • Wednesdays • 8–10 pm

Dance on a wood floor in the climate-controlled community room of the **Glen Echo Town Hall, 6106 Harvard St., Glen Echo, MD 20812**. Bring clean, non-scuffing shoes for dancing. Cheerful, patient, talented callers are accompanied by top-notch musicians—every Wednesday a different and delightful mix of instruments, including piano, fiddle, flute, harp, oboe, concertina, bassoon, cello, viola, and recorder. Light refreshments served at the break. Experienced and new dancers welcome. No partner required. **Info: Stephanie Smith at 301.229.3577 or Roger Broseus at English@fsgw.org**

Admission: \$8 for FSGW members, \$10 for non-members.

May

2 Michael Barraclough calls to the music of **David Giusti** (recorders), **Jeff Steinberg** (fiddle), and **Melissa Running**.



9 Tom Spilsbury leads the dances while **Barbara Heitz** (flute), **Ralph Gordon** (cello), and **Liz Donaldson** (piano) play the tunes.



16 Melissa Running calls to the playing of **David Knight** (fiddle), **Bruce Edwards** (bassoon and concertina), and **Liz Donaldson** (piano).

23 Stephanie Smith leads the dances while **Karen Ashbrook** (hammered dulcimer and flute), **Paul Oorts** (mandolin), and **Liz Donaldson** (piano) play the tunes.



30 Susan Taylor calls while **Colleen Reed** (flute), **Becky Ross** (fiddle), and **Francine Krasowska** (piano) play the tunes.



FSGW Family Dance

Spanish Ballroom, Glen Echo, MD
Sunday, May 13 • 3-5 pm

Bring Mom out for a real treat, the dancing is fun, the venue—fabulous! **Brendan Taafe** leads the dancing to the tunes of **Stefan Amidon**, percussion and mandolin, **Colin Lindsay**, fiddle and concertina and **Glen Loper**, mandolin. 7300 MacArthur Blvd. \$5 per person, fsgw.org

DEADLINE for JUNE 2012 FSGW Newsletter is THURSDAY, MAY 10th. It is ONLY JUNE!
JULY AND AUGUST WILL BE A JOINT ISSUE. SEND ALL SUBMISSIONS TO newsletter@fsgw.org

FSGW Sunday Night Dances

at Glen Echo Park, MD
 Contras & Squares • 7:30–10:30 pm
 Introductory lesson every Sunday, 7–7:30 pm

Join us for an evening of dancing at Glen Echo Park. Every Sunday FSGW (in cooperation with the National Park Service, Montgomery County, and the Glen Echo Park Partnership for Arts and Culture) presents contras and squares danced to live music by fabulous bands with entertaining callers. Experienced and new dancers welcome; no partner needed. **Welcome/Orientation session every Sunday at 7. Come early for an introduction to the basic moves.** Dances often become more challenging as the evening progresses. During the spring and summer, most Sunday dances are in the Bumper Car Pavilion; then move into the 1920s restored Spanish Ballroom in the fall and winter. Bring water or a sports drink, and dress in layers. Smooth-soled shoes are kindest on your knees and ankles when turning. Info: **Penelope Weinberger, dance@fsgw.org**

**ADMISSION: \$9 FOR FSGW, BFMS, CDSS, AND ATDS MEMBERS,
 \$5 AGES 7-22 (WITH STUDENT ID IF OVER 17)
 \$12 FOR THE GENERAL PUBLIC.**

May

6 Ken Gall with *The Dead Sea Squirrels* in the Bumper Car Pavilion. A lively band churning up music of the American South, British ballads, African-rooted rhythm and blues, Cajun waltzes, Celtic and old-time fiddle and banjo tunes. **Cathy Mason** (fiddle), **Craig Edwards** (fiddle, banjo, button accordion, guitar, mandolin and vocals), **Dave Howard** (guitar)

13 Jesse Edgerton with *Devanney's Goat*—three veterans of Magic Foot with **Glen Loper**, mandolinist extraordinaire. Dance to driving Irish music with an irrepressible rhythm. **Brendan Taaffe** (guitar, feet), **Stefan Amidon** (percussion, mandolin), **Colin Lindsay** (fiddle, Anglo concertina), **Glen Loper** (mandolin) In the Bumper Car Pavilion

20 George Marshall and **Tim Van Egmond** call to *Swallowtail*. The crème-de-la-crème of New England contra bands. Legendary. **George Marshall** (concertina, bodhran), **Ron Grosslein** (fiddle and mandolin), **Tim Van Egmond** (hammered dulcimer), **Timm Triplet** (piano) **David Cantieni** (saxophone, flute, bombard, whistle, and feet). In the Spanish Ballroom.

27 On Memorial Day Weekend, **Jack Mitchell** calls with *Terpsichore*. They are local favorites, Scottish fiddle champion **Elke Baker**, piano doyenne **Liz Donaldson**, and the ubiquitous **Ralph Gordon** on bass. In the Spanish Ballroom.



Chesapeake Dance Magic

By Penelope Weinberger



On the drive out to Chesapeake Dance weekend our 13-year-old daughter said dreamily, “I’m looking forward to the food, and I’m really excited about the dancing.” She’s one of the youngest to attend and spends the weekend roving the campground with eight or ten other teens, gossiping on the deck, and dancing dancing!

—As do we, with just the occasional break for a nap, a tennis game, a rubber of bridge, canoeing on the river; the rest of our weekend is dancing; contras, squares, waltzes.



The 30th annual Chesapeake Dance Weekend is magic; a world made up of about 250 dancers, musicians, organizers and staff all with a single mission to dance and enjoy. The talent is incomparable, continuing the Chesapeake tradition of bringing North and South together with **Crowfoot** and **Joseph Pimental** representing the northern tradition and **Tractor Family** with **Cis Hinkle** bringing the southern. Also there is the incredibly perky, smiling and talented couple, **Matthew Olwell** and **Emily Oleson** teaching flatfoot and Jazz era dances with **Steve Hickman** and **John Devine** playing along.



Of course there are surprises. An impromptu performance by **Steve Hickman** and **Matthew Olwell** on Hambone—accompanied by a Steve Hickman–style story that had us roaring with laughter. **Joseph Pimental** sneaks a few English Country Dances into the evening, just enough to entice me out on Sunday morning for “English as a second language” which leaves me telling Erik “we’re free on Wednesdays, we’re going to English!” In Saturday night’s caller switcheroo Joseph calls one with **Tractor Family**, and **Cis Hinkle** calls with **Crowfoot**, so fun! The continuing refrain from the weekend: “Well, we don’t have time for a waltz, but

Photos by Erik Ewald

we’ll make it up to you tonight”— and that night, waltzing to **Judy Hyman’s** fiddling after what feels like 100 hours of dancing already, I fall in love again.



Kudos to the Chesapeake Committee—**Janine Smith, Sargon DeJesus, Michal Warsaw, Joel Bluestein, Robert Cox, Eric Jacobson, Karen Cunningham, John Merck, Anne Sergeant and Wayne Harvey** for an enchanted weekend! For a wonderful article on the history of the dance weekend please see Joel Bluestein’s article in the CDSS newsletter: http://www.cdss.org/tl_files/cdss/newsletter_archives/news/2012-winter_chesapeake.pdf For a poster of the 30 Chesapeake line-ups, see: <http://www.chesapeakedance-weekend.org/30thCDWhistory.pdf>

Photo by: Nathan Lachow

FSGW Contra Sonic

Tuesday, May 15 • 7:30-10:30 pm
Glen Echo, MD

Ted Hodapp and DJ Improper will rock, reel, do-si-do, and oontz, oontz, oontz the house. Glow sticks provided. Now back at the Ballroom Annex at Glen Echo Park. Look for us on Facebook at: **Contra Sonic-FSGW Alternative Music Contra**, fsgw.org



The Great American Square Dance Revival will Return on Saturday, June 9

Save the Date for

THE DC DANCE CELEBRATION AT GLEN ECHO PARK

A Benefit for the Folklore Society, Friday Night Dance, and Glen Echo Park

FRIDAY TO SUNDAY, JUNE 15-17

Here's the schedule at this writing...

FRIDAY

8:30-11:30 pm Contra dancing with Adina Gordon calling and *Serpentine*
11:30 pm -1:30 am Contra Sonic in the ballroom with DJ Improper with Ann Fallon calling.

SATURDAY

1 pm - *Cabaret Sauvignon* (David Weisler, Karen Ashbrook, Paul Oorts & Andrea Hoag)
with Adina Gordon - *Contra and couple dances*
3 pm - *Morrison Brothers* (Owen Morrison, Will Morrison, Jim Morrison) with TBA - *Contra*
5 pm - *Waverley Station* (David Knight and Liz Donaldson, with Colleen Reed)
with Joseph Pimental - *English Country*
7 pm - Open Band with Greg Frock - *Contra*
9 pm - *Sugar Beat* (Marc Glickman, Elke Baker, Susan Brandt) with Janine Smith - *Contra*
11 pm - *Frog Hammer* (Jim Besser, Gwyn Collinson, Andrew Marcus, Bob Collins,
Michael Ferguson, Richard Seidel, Dave Casserly) with Michael Barraclough - *Ceilidh*

SUNDAY

7:30 - 10:30 pm *Serpentine* with Anna Rain calling

*This event is being held in cooperation with the Glen Echo Park Partnership for Arts and Culture,
the National Park Service and Montgomery County, MD. Info: pz_weinberger@hotmail.com*

FSGW BOARD MEETING HIGHLIGHTS APRIL 2012

Present: At-large Member **Sue McIver**, Publicity Chair **RosieLee Salinas**, Concerts Chair **Betsy Platt**, Vice President **Bill Mayhew**, Publications Chair **Roxanne Watts**, Treasurer **Jerry Stein**, and President **Mary Cliff**. Absent: Dance Chair **Penelope Weinberger**, Membership Chair **Stephanie Kaufmann**, Secretary **Cat Tucker**, At-large member **Michael Barraclough**.

Michael Barraclough's written notice of resignation from the board was accepted.

Concerts: 61 people were counted at the *Warner Collection* event and 103 at *Finest Kind*.

The Potomac River Sacred Harp Singing Convention drew a healthy crowd.

Dance: Penelope is forming a committee to oversee on-site management of the Sunday night dances.

Membership: Stephanie sent report: 1092 current family members, 725 current individual members.

Publications: The new logo is being assimilated with in all aspects of FSGW, beginning with Sacred Harp,

Chesapeake Dance, Square Dance Revival. Discussion ensued about maintaining closer relationships with groups we sponsor. There was discussion of how to increase newsletter distribution.

Treasurer: The credit card machine is increasingly popular for admissions and CD purchases.

Elections: Jerry announced a tentative list of nominees, including six who would like to fill the three At-Large positions.

Glen Echo Gala: The list of attendees at the FSGW table is still tentative.

Washington Folk Festival: We are moving toward the June event at Glen Echo. Links are on the web site for performers, crafters and volunteers to reach the appropriate contacts. Bill Mayhew has also agreed to make phone calls to contact volunteers.

Marketing: We want to engage young people without duplicating existing programs. Sue is compiling a list of people, places and organizations we might collaborate with.

FSGW Newsletter Editorial Policy

The Folklore Society of Greater Washington endeavors to print copy it deems relevant to its membership and purpose as stated in its by-laws:

"The main purpose of the Society is to further the understanding, investigation, appreciation, and performance of the traditional folk music and folklore of the American people."

- All copy (except ads) must be submitted by e-mail to newsletter@fsgw.org in text format in the body of the e-mail by the 10th of the preceding month. No attachments, please.
- Please review comparable entries from the Newsletter and edit accordingly.
- The Editor reserves the right to edit or omit copy as necessary.

Editor: Roxanne Watts • newsletter@fsgw.org • 703-618-1799

Design & Layout: Jennifer Woods GRAPHICS • Silver Spring, MD • 301-587-7174

FSGW Board 2011-2012

Mary Cliff, *president*
Bill Mayhew, *vice president*
Jerry Stein, *treasurer*
Cat Tucker, *secretary*
Betsy Platt, *programs*
Penelope Weinberger, *dance*
Stephanie Kaufman, *membership*
Roxanne Watts, *publications*
Rosie Lee Salinas, *publicity*

Members-at-Large

Sue McIver
Open
Open

president@fsgw.org
vicepresident@fsgw.org
treasurer@fsgw.org
secretary@fsgw.org
program@fsgw.org
dance@fsgw.org
membership@fsgw.org
newsletter@fsgw.org
publicity@fsgw.org

703.534.7581
301.595.7920
703.671.6181
703.723.3621
301.717.4641
301.315.9461
301.588.8594
703.618.1799
703.765.5834

703.519.9157

FSGW Web Redesign Committee

Sandy Aubin, Committee Co- Chair

web@fsgw.org

Mini Festival Coordinating Committee

April Blum, Mini-Fest Chair

minifest@fsgw.org

703.978.2774

Washington Folk Festival Coordinating Committee

Dwain Winters

DWAINFEST@aol.com

301.657.2789

FSGW BOARD MEETING TUESDAY, MAY 1 • 8 PM

The monthly FSGW board meeting will be held in Classroom 201 Arcade Bldg at Glen Echo Park, MD. All FSGW members may attend. If you wish the Board to consider a particular matter, please contact the appropriate board member, or **Mary Cliff by e-mail, president@fsgw.org, or call afternoons or evenings 703-534-7581** in advance of the meeting.



Washington Folk Festival

Saturday, June 2 & Sunday, June 3

12 to 7 pm both days

Free, donations appreciated!

The Washington Folk Festival is the Folklore Society's most ambitious annual event. The festival has as its mission to showcase the rich diversity of traditional culture that is found in our Greater Washington Area. The festival includes five stages, simultaneously presenting music and dance for a total of nearly 70 hours of live performance. It also provides a lively storytelling stage, dance workshops in the Spanish Ballroom, a craft marketplace in the old Bumper Car Pavilion, periodic street performances, a pipe band parade and many spontaneous picking sessions in Glen Echo's pick nick grove.

On the bill for this year's festival is a great mix of the long time favorites and several new additions. Returning festival mainstays include: **Bill Danoff**, **OCEAN Orchestra**, **Speedy Tolliver**, **Bill Baker**, the **Washington Toho Koto Society**, **Reed Martin**, **Soul In Motion**, **Magpie**, **The New Sunshine Skiffle Band**, **Christylez Bacon**, and the **Culkin School of Traditional Irish Dance**. New, for 2012, are the **19th Street Band**, **Orrin Star**, the **Blue Moon Cowgirls**, and the **New Century American Irish-Arts Company**. 2012 Storytellers include **Diane Macklin**, **Bill Mayhew**, and **Jane Dorfman**. The Spanish Ballroom will feature workshops in Klezmer, Greek, Swing, Country Western, and Irish dancing. One of the most



popular elements of the festival is its highly entertaining and informative workshop presentations. This year's lineup includes a centennial celebration of **Woody Guthrie's** birth, a musical tribute to late luthier **Keith Young**, songs from the 99% Movement, a showcase of fiddle styles with **Alan Jabbour**, and "Yankee Frolics: Traditional Songs about the War of 1812." In order to produce the festival, FSGW relies on an army of volunteers. A couple of hours of your time can help make the festival possible. To volunteer go on-line at www.washingtonfolkfestival.org and fill out the on line form.

Glen Echo Park is located at 7300 MacArthur Blvd., Glen Echo, MD. On-site parking will be limited. Satellite parking is available at GEICO Parking Lot at 4608 Willard Ave Chevy Chase, MD, and the shuttle from the lot is also convenient for Metro riders, since the site is just 2 blocks from Friendship Heights Metro. Visit the festival website for details. The full 2012 program schedule will be posted online in early May.



Concerts

ILYAIMY & THE FALCON RIDGE PREVIEW TOUR FRIDAY, MAY 4 • 7 PM

Local band **ilyAIMY** hosts their fellow Falcon Ridge contest winners **Pesky J. Nixon**, **Louise Mosrie** and **Blair Bodine**. Takoma Park Community Center, 7500 Maple Ave., 301.754.3611. Tickets \$15/\$18, Students \$12/\$15. www.imtfolk.org.

BLUE MOON COWGIRLS • HERNDON, VA SATURDAY, MAY 5 • 7:30–10 PM

Blue Moon Cowgirls brings you country music the way it was in the '50s and '60s before torn jeans and glitz. **Karen Collins**, **Lynn Healey**, **Ann Porcella** and **Ira Gitlin** blend superb vocals with super-solid guitar work. Holy Cross Lutheran Church, 1090 Sterling Rd., \$12, children 12 and under, free. Info: Bob Thompson, 703.435.8377 or kd4fue2@verizon.net

ORRIN STAR HOUSE CONCERT • FREDERICK, MD SATURDAY, MAY 5 • 8 PM

'An Evening of Bluegrass, Folk & Humor'—Great musical fluency plus anecdotes, fresh and charming. Former National Flat-picking Champion. Up-close and personal. \$15 donation. For location/reservations contact molloyk1@westat.com or 301.695.6795. www.orrinstar.com

HOPE FOR AGOLDENSUMMER • COLLEGE PARK, MD THURSDAY, MAY 10 • 8 PM

Sisters **Claire and Paige Campbell**, from Athens, GA, create rusty, gutter angel melodies with banjo, slide guitar, glockenspiel, singing saw, piano and a few old coke bottles. Free, \$5–10 suggested donation. 4711 Knox Rd (the Old Parish House meeting hall), 1 block from the College Park Metro station. Sponsored by the College Park Arts Exchange.

CONCERTS continued

**CAREY CREED AND FRIENDS • ALEXANDRIA, VA
THURSDAY, MAY 10 • 7–8:45 PM**

Bob Williams—guitar and harmonica; and **Lynn Hollyfield**,—harmonies, guitar and mandolin provide tasty backup at the Athenaeum, 201 S. Prince St., 22314. \$10. Tickets, info: **703.548.0035**. <http://www.nvfaa.org/events/second-thursday-music-carey-creed>

**DC LABOR CHORUS • WASHINGTON, DC
SATURDAY, MAY 12 • 8 PM**

The DC Labor Chorus, with special guests *Kinobe & the African Sensation* and *Echoes of Africa Community Chorus*, in a benefit concert, “One Planet, One Future.” Proceeds will be shared with the African Immigrant and Refugee Foundation. \$20. First Trinity Lutheran Church, 309 E St., NW (Judiciary Square Metro). Buy tickets online at www.laborheritage.org

BASYA SCHECHTER

**WASHINGTON JEWISH MUSIC FESTIVAL
TUESDAY, MAY 15, 7:30 PM & OTHER DATES**

The 13th Annual Washington Jewish Music Festival takes place between May 3 and 21, in various venues in and around Washington. Much of it is very contemporary, with fusions from Klezmer to funk to hip-hop, and including dance and film. Information is at www.wjmf.org.

FSGW is co-sponsoring a concert by a member of *Pharaoh's Daughter* with the DC Jewish Community Center and Yiddish of Greater Washington. **Basya Schechter** sets Yiddish poetry of Rabbi Abraham Joshua Heschel for her *Songs of Wonder* project, drawing on an eclectic mix of traditional and modern music styles. Tuesday, May 15 at Washington DC Jewish Community Center, 1529 16th St., NW, Washington, DC; \$15/\$12 discounted member/senior/student. Tickets at www.wjmf.org.

**WARNER WILLIAMS, ELEANOR ELLIS,
JAY SUMMEROUR, ERIC SELBY • NW DC
WEDNESDAY, MAY 16 • 8 AND 10 PM**

Together for the first time at DC's historic Blues Alley for a night of acoustic blues. \$20. 1073 Wisconsin Ave., 20007 www.bluesalley.com, 202.337.4141.

**JIMMY GAUDREAU & MOONDI KLEIN • HERNDON, VA
SATURDAY, MAY 19 • 7:30–10 PM**

A CD release party for Jimmy and Moondi's latest album on Rebel Records, *Home from the Mills*. These two have played and sung with many greats in bluegrass over the past 20 years. Holy Cross Lutheran Church, 1090 Sterling Rd., \$15, children 12 and younger, free. Info: Bob Thompson, 703.435.8377 or kd4fue2@verizon.net

BIRCHMERE CONCERT HALL

3701 Mt. Vernon Ave., Alexandria VA 22305; all shows begin at 7:30 pm; www.birchmere.com

May

- 1 **Nanci Griffith + Eric Taylor**, singer-songwriters, \$39.50
- 9 **Ottmar Liebert & Luna Negra**, nouveau flamenco, \$35
- 10 **Carolina Chocolate Drops**, contemporary old time (in bandstand), \$25
- 16 **Dark Star Orchestra**, acoustic *Grateful Dead* material (in bandstand), \$27.50

THE FILENE CENTER AT WOLF TRAP

1531 Trap Rd., Vienna VA 22182; wolftrap.org. Most shows at 8 pm except where noted.

May

- 25 **A Prairie Home Companion: Garrison Keillor** and guests **Heather Masse, Sara Watkins**, \$25-55, 8 pm
- 26 As above—5:45 pm

Sundays

**FOCUS ALEXANDRIA • ALEXANDRIA, VA
SUNDAY, MAY 20 • 7 PM**

Hungry for Music: A Bob Dylan Tribute. A variety of artists perform for the benefit of young people in need of musical instruments. Church of the Resurrection, 2280 N. Beauregard St., 22311. Concert \$18/ \$15. Info: **703.501.6061**, kay@focusmusic.org or www.focusmusic.org

Mondays

**INSTITUTE OF MUSICAL TRADITIONS
ROCKVILLE, MD
MONDAYS • 7:30 PM**

Saint Mark Presbyterian Church, 10701 Old Georgetown Rd., 20852, www.imtfolk.org

May

- 14 **Frank Solivan and Dirty Kitchen**; bluegrass, \$18 adv/22 door, students \$14 adv/18 door
- 21 **Jeffrey Broussard & the Creole Cowboys**; pack-the-floor Creole and Zydeco, \$18/22, \$14/18

Tuesdays

**FOCUS ROCKVILLE • ROCKVILLE, MD
TUESDAYS • 8 PM**

Our home is at the Unitarian Universalist Church of Rockville. Concerts are usually the second and fourth Tuesday of each month at 8 pm. 100 Welsh Park Dr., 20850. Admission \$18/15 www.focusmusic.org, 301.275.7459

May

- 8 **Jim Photoglo**—four decade history of composing and playing + **Louise Mosrie**
- 22 **Laurie Herscovitch**—modern acoustic folk/blues/jazz/pop, + **John Jennings**; eclectic

**THE FOLK-CLUB OF RESTON/HERNDON
FINDS A NEW HOME**



The Folk-Club of Reston/Herndon is now making music in its new location, a warm and friendly mahogany-gold draped room at the Amphora Diner Deluxe in Herndon. For the last 24 of its 27 years—until it recently closed—the Tortilla Factory provided a stable location so this group could grow and flourish. Over the years, there have been over 600 members, and thousands who have passed through its doors. Still meeting every Tuesday evening in the new venue, this vital Club offers a known performer in concert once a month (usually a sell-out, especially when it's someone like Garnet Rogers, Gordon Bok and Beppe Gambetta), or open mics and member showcases on the other weeks. Many of the members play professionally, so to hear them in this atmosphere, playing with and for friends is a treat! The crowd is most congenial and supportive, and the acoustics are great, so come on out, share a meal, some music and make some new friends!

TUESDAY, MAY 22 • HERNDON • 7:15 PM

Daniel Lee—award-winning former Strathmore Artist in Residence, WAMA “Songwriter of the Year” '05, traveling gypsy tumbleweed poet-musician-singer returns from Baton Rouge. \$9 members, \$10 non-members. Amphora Diner Deluxe, 1151 Elden St., Doors open at 6. Info: 703.435.2402, jamessue@aol.com, www.restonherndonfolkclub.com

Wednesdays

**INSTITUTE OF MUSICAL TRADITIONS
TAKOMA PARK, MD
WEDNESDAYS • 7:30 PM**

Takoma Park Community Center, 7500 Maple Avenue, 20912, www.imtfolk.org

May

- 9 **Molasses Creek**, high-energy acoustic, \$15/18, students \$12/15
- 23 **Pierre Bensusan**, French-Algerian guitarist, singer & composer, \$20/25, students \$15/20
- 30 **The Teetotallers**; Irish trio, fiddler Martin Hayes, flutist Kevin Crawford and singer/guitarist John Doyle \$20/25, \$15/20

Thursdays

**BALDWIN'S STATION • SYKESVILLE, MD
THURSDAYS • 7 OR 8 PM**

7618 Main St, Sykesville, MD. Info: 410.795.1041, www.uptownconcerts.com, or uptownconcerts@gmail.com

May

- 17 **Stephanie Corby & David Glaser**; she fuses classical, jazz and blues; he sings straight from the heart, \$17, 8 pm
- 20 Sunday! **Catie Curtis**; From Boston, diverse subjects, compelling melodies \$20, 7 pm
- 31 **Dala**, angelic duo, Canadian Vocal Group of the Year, \$20, 8 pm

**LIVE BLUES SERIES • SILVER SPRING
THURSDAYS • 7–9 PM**

Live Acoustic Blues at El Golfo Restaurant, 8739 Flower Ave. Silver Spring, Md. 20901. Cover \$5 includes free drink. Please check the website or e-mail for info. Takomadave@gmail.com, www.elgolforestaurant.com

Fridays

**CELLAR STAGE • BALTIMORE, MD
FRIDAYS • 8 PM**

The Faith Community United Methodist Church, 5315 Harford Road, Info: 410.521.9099 or www.uptownconcerts@gmail.com

May

- 4 **Lucy Kaplansky + Beggars Ride**, New York singer/songwriter with a luminous voice and a duo from Baltimore, \$21
- 11 **Garnet Rogers + Debra Cowan**, influential folk vocalist + powerful songstress, \$21

**POTTER'S HOUSE BENEFIT CONCERTS
WASHINGTON, DC**

Potter's House, 1658 Columbia Rd NW, easy Metro access and off street parking available. Good music, good food, for a good cause. 7 pm. Benefit concerts, \$15 suggested donation; open mic night free. Info: 202.232.5483 or www.PottersHouseDC.org

**CARROLL CAFÉ AT SEEKERS CHURCH • TAKOMA DC
FRIDAY, MAY 11 • 7:30 PM**

Blue Moon Cowgirls with Harley String Band; 276 Carroll St., NW at Takoma Metro. \$15. www.carrollcafe.org, info@carrollcafe.org. Jesse Palidofsky, 301.562.4147 or 202.829.9882 night of show.

CONCERTS CONTINUED ON PAGE 14



May 2012

Sunday	Monday	Tuesday	Wednesday	Thursday
		<p>1</p> <p>7 pm Chevy Chase Israeli Dance 7:15 Reston/Herndon Folk Club 8 FSGW BOARD MEETING 8 Greenbelt Scottish Country Dance 8 Sea Chanteys/Wheaton</p>	<p>2</p> <p>7:30 Rock Creek Morris Women 8 FSGW ENGLISH COUNTRY DANCE 8 Baltimore Contra Dance 8 Alexandria Scottish Country Dance 8 Columbia Int'l Folk Dance</p>	<p>7:30 Fre 7:30 Ch 7:45 Arl 8 Me 8 Fo 8:15 GL</p>
<p>6</p> <p>10 am Annapolis Jam 10 am Shepherdstown May Day 1 pm Latin Waltz Workshop 2 AGAS Festival @ Blobs Park 3 Glen Echo Waltz 4 Wheaton Scottish Jam 7 Glen Echo Blues/Swing Dance 7:30 FSGW CONTRA DANCE KEN GALL CALLS WITH DEAD SEA SQUIRRELS MARYLAND SHEEP & WOOL FESTIVAL</p>	<p>7</p> <p>7 pm DC Bluegrass Jam 7:30 Bethesda Int'l Folk Dance 7:30 Arlington Morris Women 8 Baltimore English Country Dance 8 Bethesda Scottish Country Dance 8 Balkan Singing</p>	<p>8</p> <p>7 pm Chevy Chase Israeli Dance 7:15 Reston/Herndon Folk Club 8 Greenbelt Scottish Country Dance 8 Focus Rockville-Jim Photoglo</p>	<p>9</p> <p>7:30 Rock Creek Morris Women 7:30 IMT Takoma Park: <i>Molasses Creek</i> 8 FSGW ENGLISH COUNTRY DANCE 8 Baltimore Contra Dance 8 Sea Chanteys/Baltimore 8 Alexandria Scottish Country Dance 8 Columbia Int'l Folk Dance</p>	<p>7 Ca Ale 7 Fre 7:30 GL 7:30 Ch 7:45 Arl 8 Coll 8 Me 8 Fo 8:15 GL FSGW</p>
<p>13</p> <p>10 am Annapolis Jam 2 pm CABOMA Jam 2:30 English Country Dance, Glen Echo 3 Cajun/Zydeco Dance-Glen Echo 3 FSGW FAMILY DANCE 4 FSGW GOSPEL SING 7:30 FSGW CONTRA DANCE JESSE EDGEKTON CALLS WITH DEVANNY'S GOAT</p>	<p>14</p> <p>7:30 Bethesda Int'l Folk Dance 7:30 Arlington Morris Women 7:30 IMT Rockville Frank Solivan and <i>Dirty Kitchen</i> 8 Baltimore English Country Dance 8 Bethesda Scottish Country Dance 8 Balkan Singing</p>	<p>15</p> <p>7 PM Chevy Chase Israeli Dance 7 Sacred Harp Singing / SE DC 7:15 Reston/Herndon Folk Club 7:30 FSGW CONTRA SONIC 8 Greenbelt Scottish Country Dance</p>	<p>16</p> <p>7 Arlington Jam 7:30 Rock Creek Morris Women 7:30 Chevy Chase Storytelling 8 FSGW ENGLISH COUNTRY DANCE 8 Baltimore Contra Dance 8 Sea Chanteys/Annapolis 8 Alexandria Scottish Country Dance 8 Columbia Int'l Folk Dance 8 Acoustic blues at Blues Alley</p>	<p>7 pm Ca 7 Fre 7:30 GL 7:30 Ch 7:45 Arl 8 WI 8 Me 8 Fo 8 Ba 8 Ste 8:15 GL</p>
<p>20</p> <p>10 am Annapolis Jam 3 pm Alpine Dancers 3 pm Waltz at Glen Echo <i>Swallowtail</i> 4 Sandy Spring Sacred Harp Singing 7 Baldwin Station-Catie Curtis 7 Focus Alexandria benefit concert Hungry for Music/Bob Dylan Tribute 7:30 FSGW CONTRA DANCE GEORGE MARSHALL AND TIM VAN EGMOND CALL TO SWALLOWTAIL</p>	<p>21</p> <p>7 DC Bluegrass Jam 7:30 Bethesda Int'l Folk Dance 7:30 IMT Rockville: Jeffrey Broussard and Creole Cowboys 7:30 Arlington Morris Women 8 Baltimore English Country Dance 8 Bethesda Scottish Country Dance 8 Balkan Singing 8 FSGW CONCERT: HARMONIA</p>	<p>22</p> <p>7 pm Chevy Chase Israeli Dance 7:15 Reston/Herndon Folk Club Concert: Daniel Lee 8 Sea Chanteys/NW DC 8 Greenbelt Scottish Country Dance 8 Focus Rockville Laurie Herscovitch</p>	<p>23</p> <p>7 Cajun Jam Greenbelt 7:30 Rock Creek Morris Women 7:30 IMT Takoma Park: Pierre Bensusan 8 FSGW ENGLISH COUNTRY DANCE 8 Baltimore Contra Dance 8 Alexandria Scottish Country Dance 8 Columbia Int'l Folk Dance</p>	<p>7 Fre 7:30 GL 7:30 Ch 7:45 Arl 8 Me 8 Fo 8 Ba 8:15 GL</p>
<p>27</p> <p>10 am Annapolis Jam 2 pm CABOMA Jam 4 FSGW SACRED HARP SINGING 7:30 FSGW CONTRA DANCE JACK MITCHELL CALLS WITH TERPSICHOSE</p>	<p>28</p> <p>Memorial Day 7:30 Bethesda Int'l Folk Dance 7:30 Arlington Morris Women 8 Baltimore English Country Dance 8 Bethesda Scottish Country Dance 8 Balkan Singing</p>	<p>29</p> <p>7 pm Chevy Chase Israeli Dance 7:30 Reston/Herndon Folk Club 8 Greenbelt Scottish Country Dance 8 Arlington Int'l Folk Dance</p>	<p>30</p> <p>7:30 Rock Creek Morris Women 7:30 IMT Takoma Park: <i>The Teetotallers</i> 8 FSGW ENGLISH COUNTRY DANCE 8 Alexandria Scottish Country Dance 8 Baltimore Contra Dance 8 Columbia Int'l Folk Dance</p>	<p>7 Fre 7:30 GL 7:30 Ch 7:45 Arl 8 Me 8 Fo 8 Ba 8:15 GL</p>



FSGW Advance Notice

Saturday–Sunday, June 2-3,
**32ND ANNUAL
WASHINGTON
FOLK FESTIVAL**
Glen Echo Park, MD

Saturday June 16 • 8 pm
House Concert
**LARRY HANKS &
DEBORAH ROBINS**
Mount Lubentia (The Wallaces) (Upper Marlboro, MD)

Sunday, September 23,
CONTRASTOCK
Spanish Ballroom
Glen Echo Park, MD

September 28-30, 2012
**48TH ANNUAL
FSGW GETAWAY**
West River Conference Center
West River, MD

Thursday	Friday	Saturday
3	4	5
Frederick Irish/Bluegrass OPEN ECHO INT'L FOLK DANCE Navy Chase Int'l Folk Dance Arlington Circle Dance E. Vernon Int'l Folk Dance Egg Bottom Morris Men Glen Echo Blues Dance	7 pm Arlington Jam 7 Potters House Concert 8 Cellar Stage: Lucy Kaplansky 8:30 Greenbelt Int'l Folk Dance 8:30 Friday Night Contra Dance 8:30 FSGW OPEN SING	11 am Riverdale Arts Festival 1 pm Archie Edwards Blues 7:30 Elverson, PA Contra Dance 7:30 <i>Blue Moon Cowgirls</i> /Herndon 8 Shepherdstown, WV Contra Dance 8 Greenbelt Israeli Dance 8 Orrin Star concert-Frederick MARYLAND SHEEP AND WOOL FESTIVAL
10	11	12
Frey Creed & Friends Alexandria Frederick Irish/Bluegrass OPEN ECHO INT'L FOLK DANCE Navy Chase Int'l Folk Dance Arlington Circle Dance Gege Park acoustic concert E. Vernon Int'l Folk Dance Egg Bottom Morris Men Glen Echo Blues Dance NEWSLETTER DEADLINE!	7 pm Potter's House Concert 7:30 Carroll Café <i>Blue Moon Cowgirls</i> with <i>Harley String Band</i> 8 Harrisburg, PA Contra 8 Cellar Stage: Garnet Rogers 8:30 Greenbelt Int'l Folk Dance 8:30 Friday Night Contra Dance	1 pm Archie Edwards Blues 6 Galesville Potluck/Dance 7 Focus Alexandria: <i>We're About 9</i> 8 Baltimore Contra Dance 8 DC Labor Chorus Concert
17	18	19
Aptiol Hill Sacred Harp Singing Frederick Irish/Bluegrass OPEN ECHO INT'L FOLK DANCE Navy Chase Int'l Folk Dance Arlington Circle Dance Heaton Folk Sing E. Vernon Int'l Folk Dance Egg Bottom Morris Men Edwin's Station: Stephanie Corby & David Glaser Glen Echo Blues Dance	7 Potter's House Concert 8 333 Coffeehouse-IONA 8:30 Greenbelt Int'l Folk Dance 8:30 Friday Night Contra Dance 8:30 Greenbelt Zydeco Dance	1 pm Archie Edwards Blues 1:30 Hammered Dulcimer Jam 7 FSGW's WASHINGTON SPRING BALL 7 Annapolis Contra Dance 7 Scandinavian Dance 7:15 Sugarloaf Coffeehouse 7:30 FSGW STORYSWAP 7:30 Jimmy Gaudreau/Moondi Klein Herndon, VA 8 Silver Spring English Country Dance 8 IMT Leela and Ellie Grace 8 Lancaster Contra Dance 8 Baltimore Advanced Contra Dance with <i>Swallowtail</i>
24	25	26
Frederick Irish/Bluegrass OPEN ECHO INT'L FOLK DANCE Navy Chase Int'l Folk Dance Arlington Circle Dance E. Vernon Int'l Folk Dance Egg Bottom Morris Men Baltimore Contra Dance Glen Echo Blues Dance	7 Potter's House Concert 8 Harrisburg, PA Contra 8:30 Greenbelt Int'l Folk Dance 8:30 Friday Night Contra Dance	1 pm Archie Edwards Blues 7:30 Leesburg Assembly English Country Dance 8 Frederick Contra Dance
31		
Frederick Irish/Bluegrass OPEN ECHO INT'L FOLK DANCE Navy Chase Int'l Folk Dance Arlington Circle Dance E. Vernon Int'l Folk Dance Egg Bottom Morris Men Edwin Station: <i>Dala</i> Glen Echo Blues Dance		



CONCERTS continued

**333 COFFEEHOUSE • ANNAPOLIS, MD
FRIDAY, MAY 18 • 8 PM**

IONA—Traditional Pan-Celtic with **Kathleen Larrick** dancing. Unitarian Universalist Church, 333 DuBois Rd, off Bestgate Ave. Acoustic music. Dessert and coffee available in this smoke and alcohol-free environment. Doors open at 7:30, concert at 8. Admission \$10, \$8 for Seniors/ students. Info: 443.786.0463 or www.fsgw.org/333

Saturdays

**SUGARLOAF COFFEEHOUSE SERIES
GERMANTOWN, MD
SATURDAY, MAY 19**

7:15 OPEN MIC • 8 PM CONCERT

Greg Greenway, nationally-known singer/songwriter from Boston, plays the gamut—intimate coffeehouses to Carnegie Hall. He's a poet and musician with a desire for social change, a soulful, sparkling entertainer. Sponsored

by the Sugarloaf Congregation of Unitarian Universalists at 16913 Germantown Rd. \$15. Refreshments included! Info: 301.977.8952, coffeehouse@scuu.org, or www.scuu.org/coffeehouse.

**IMT NEXT TO THE HOUSE CONCERT SERIES
TAKOMA PARK, MD
SATURDAY, MAY 19 • 8 PM**

Leela and Ellie Grace—sisters, songwriters, percussive dancers, multi-instrumentalists. \$15/18 301.754.3611, www.imtfolk.org.

**FOCUS MOUNT VERNON • ALEXANDRIA, VA
SATURDAY, MAY 12 • 7 PM**

We're About 9—fun and fanciful power folk trio. St Aidan's Episcopal Church, 8531 Riverside Rd., 22308. 703.975.8027 Venue Host: Mark Gilliam \$15/18, www.focusmusic.org

Dances

COMMUNITY/FAMILY

**GALESVILLE COMMUNITY DANCE
SATURDAY, MAY 12
6 PM POTLUCK, 7 PM DANCE**

Our Annual May Celebration, complete with May Pole Dances! Traditional Appalachian dance tunes by **Leah Weiss** (fiddle), **Gary Wright** (guitar), and **Friends**. Sit-ins welcome on fiddle, guitar, and clawhammer banjo. Dance squares, circles, longway sets and waltzes with Janine Smith calling. Galesville Memorial Hall, 952 Galesville Rd., All ages welcome! 7:00—family-friendly dancing, 8:30–10, more challenging, Adults \$10, 5-17 \$5, Under 5, free. <http://communitysquaredance.wordpress.com/> 301.926.9142

CONTRA

Sundays

**THE FSGW SUNDAY NIGHT DANCES
ARE LISTED ON PAGE 5.**



Wednesdays

**BALTIMORE FOLK MUSIC SOCIETY • MD
WEDNESDAYS • 8–10:30 PM**



Beginners are always welcome. **New-dancer workshops to be held at 7:30 on the 2nd and 4th Wednesdays.* Nationally-known musicians and callers appear regularly. Members \$9; non-members \$13; member/non-member students with ID \$4/\$6. Lovely Lane Church, 2200 St. Paul St., 21218.

May

- 2 **Robin Marcus** calls to *Charlie and the Wombats*—**Ralph Barthine** (guitar), **Carl Friedman** (fiddle, flute), **Charlie Pilzer** (piano, accordion), and **Robin Wilson** (flute, concertina, saxophone).
- 9* **April Blum** calls to *Contranella*—**Megan Wobus Beller** (fiddle), **John Wobus** (piano), and **Charley Beller** (percussion, mandolin, and banjo).
- 16 **Rickey Holt** calls to *Taylor Among the Devils*—**Steve Hickman** (fiddle), **Marty Taylor** (concertina, pennywhistle), **Jonathan Jensen** (piano, ocarina).
- 23* **Dave Colestock** calls to the *Baltimore Open Band*
- 30 **Anna Rain** calls to *Green Light Karma*—**David Knight** (fiddle), **Andrew Marcus** (accordion), and **Dave Wiesler** (piano, guitar).

Fridays

FRIDAY NIGHT DANCERS • GLEN ECHO PARK, MD
FRIDAYS • 8:30–11:30 PM

The Friday Night Dancers (in cooperation with the National Park Service, Montgomery County, and the Glen Echo Park Partnership for Arts and Culture) sponsor weekly contra dances to live music in the Glen Echo Spanish Ballroom. New-dancer classes start at 7:30. Dances start at 8:30. \$9 for the lesson and dance.

To play for or call a dance, e-mail fdngigs@petml.com. General info at www.fridaynightdance.org. On Facebook at Friday Night Dance at Glen Echo Park.

May

- 4 **Robin Marcus** calls to *Honeysuckle Rose*. **Liz Donaldson** (piano), **Andrea Hoag** (fiddle), **Paul Oorts** (mandolin) and **Ralph Gordon** (bass).
- 11 **Rickey Holt** calls to the *Glen Echo Open Band* (17 and under free on 2nd Fridays). (BCP)
- 18 **George Marshall** and **Tim van Egmond** call to *Swallowtail*: **David Cantieni** (winds), **Ron Grosslein** (fiddle), **Timm Triplett** (piano), **George Marshall** (concertina) and **Tim van Egmond** (hammered dulcimer).
- 25 **Mark Sherman** calls to *AP and the Banty Roosters*: **Andy Porter** (fiddle), **Mark Lynch** (mandolin), **Joe Langley** (guitar) and **Artie Abrams** (bass).

LOCUST LANE CONTRA • HARRISBURG, PA
2ND AND 4TH FRIDAYS • 8–11 PM

All ages and experience levels welcome. Light refreshments at the break. New-dancer class at 7:30. Members \$8; non-members \$9; students \$4. At Christ the Savior Orthodox Church, 5501 Locust Lane www.harrisburgcontra.org

May

- 11 **Donna Hunt** calling to *Smash the Windows*.
- 25 Open Callers Night with *Strings on Wings*

Saturdays

ELVERSON DANCE • ELVERSON, PA
1ST SATURDAYS • 7:30 PM

May 5: **Karl Senseman** calls to *Fingerpyx*. At the Hillcrest Hall location; 1665 Rock Hollow Rd., Birdsboro, 19508.

Members/non-members, \$8/9. \$5 students/seniors. New dancers welcome, lesson at 7. Bring soft-soled shoes and a snack to share at the break. Info: **Nancy Katzen**, 610.780.5667 or www.elversoncontra.org

SHEPHERDSTOWN DANCE • WV
1ST SATURDAYS • 7:30–11 PM

May 5: **Robbin Shaffer Marcus** calls a lively selection of contra dances to the music of *Frog Hammer* at the War Memorial Building, 102 E. German St. Beginners' workshop at 7:30; dance starts at 8. All levels welcome, no partner needed. Please wear clean, soft-soled shoes to protect the floor. \$10 adults, \$7 SMD members, \$4 dancers under 12. Info: www.smad.us or call **Becky** at 304.876.2169

BALTIMORE DANCE
SECOND SATURDAYS
7:30–11 PM

May 12: **Jesse Edgarton** calls to *DeVanney's Goat*. Orientation and style points for seasoned dancers at 7:30. Contra from 8 to 11. No experience or partner necessary, all welcome. \$9/13/4/6. St Mark's on the Hill, 1620 Reisterstown Rd., Info: **Rebecca** at nutritionexpeditions@yahoo.com

RESTON CONTRA DANCE

The Reston Contra Dance will resume its series of four winter dances on November 10, 2012, followed by three dances on the second Saturday of January, February, and March, 2013. Info: anote20@gmail.com.

ANNAPOLIS CONTRA AND SQUARE DANCE
3RD SATURDAYS • 7–10 PM

May 19—**Rickey Holt**, from New Hampshire, calls to the music of **Ryck Kaiser** on fiddle and **Jill Smith** on piano. Introductory class at 6:30; all dances taught and walked through and all ages welcome. \$10 with discounts for seniors, students, families and members of Annapolis Traditional Dance Society (ATDS). Snacks to share at the break are welcome! Friends Meeting Hall, 351 DuBois Rd., 21401. Info: **Ann Fallon** at 410.268.0231, aefallon@verizon.net; www.contradancers.com/atds

SPECIAL ADVANCED DANCE
BALTIMORE, MD
SATURDAY, MAY 19
8–11:30 PM

Wanted: 200 dancers to come dance Advanced Dances with *Swallowtail* in air-conditioned comfort on a sprung floor at the Mobtown Ballroom, 861 Washington Blvd., 21207 (www.mobtownballroom.com). Members \$12 and non-members \$16. Out-of-towners seeking housing with local dancers can be arranged by contacting **Ed Vandenbosche** at edvcih@yahoo.com or 443-844748. www.bfms.org/swallowtail.php

LANCASTER CONTRA DANCE
3RD SATURDAYS • 8–11 PM

May 19—DeLaura Padovan calls to *Devine Comedy*. Lancaster County Park, Pavilion 11. Potluck supper, 5:30. Beginners' workshop 6:15; Dance 7-10. \$8/\$5. Info: Shane 717.538.5833 or www.lancastercontra.org

FREDERICK CONTRA DANCE • FREDERICK, MD
4TH SATURDAYS • 8–11 PM

NO dance in May, Memorial Day Weekend. Info/directions: www.contradancers.com or call Boe Walker at 301.694.6794

Please consider joining us for the family-friendly Almost Heaven dance weekend beginning on May 26. Details at <https://sites.google.com/site/ahsince1988/home>

———— *ENGLISH COUNTRY* ————

Sundays

ENGLISH COUNTRY DANCE
GLEN ECHO PARK, MD
SECOND SUNDAYS • 2:30–5:30 PM

May 13: ECD4Fun (in cooperation with the National Park Service, Montgomery County, and the Glen Echo Park Partnership for Arts and Culture); simpler, fun dances suitable for new dancers. Experienced dancers are very welcome as good role models. All dances are taught, and walked through with the first 30 minutes of the afternoon geared to newcomers. \$10. In the ballroom annex. Info: 703.992.0752 www.michaelbarraclough.com/ECD4FUN.

Mondays



BALTIMORE FOLK MUSIC SOCIETY
ENGLISH DANCE • PIKESVILLE, MD
MONDAYS • 8–10:30 PM

English Country Dancing is lively movement to elegant music in a friendly, informal setting. All dances are taught and walked through. New-dancer orientation first Wednesday at 7:45. Admission \$8 Members, \$11 Non-members, \$2 student discount. St. Mark's on the Hill Parish Hall, 1620 Reisterstown Rd., 21208. Info: Emily Aubrey at 410.433.4419 or engdance@bfms.org

May

7 Michael Barraclough calling to Emily Aubrey (violin), Robin Wilson (flute and concertina), and Judy Meyers (piano).

14 Tom Spilsbury calling to Becky Ross (violin), Marty Taylor (recorder and concertina), and Jonathan Jensen (piano).

21 Carl Friedman calling to the *Geud Band of Baltimore*.

28 Sharon McKinley calling to Jeff Steinberg (violin), Dave Crandall (winds), and Judy Meyers (piano).

Saturdays

ENGLISH COUNTRY DANCE • SILVER SPRING, MD
SATURDAY, MAY 19 • 8–10:45 PM

At Glen Haven Elementary School, 10900 Inwood Ave. (parking and entrance in rear). Dance to music by *Peascods Gathering*, calling by Bob Farrall. Beginners and singles welcome. \$5. This is the last dance of the season until September. Info: Carl Minkus 301.493.6281 (cminkus@verizon.net), Bob Farrall 301.577.5018

THE LEESBURG ASSEMBLY DANCE • GREAT FALLS, VA
SATURDAY, MAY 26 • 7:30–10:30 PM

Come join us for English Country dancing at St. Francis Episcopal Church. Liz Donaldson calls with music by Rhonda Hotop and Judy Meyers The May 19 dance has been moved to May 26 to avoid a conflict with the Spring Ball. All dances taught and walked through; new dancers welcome. 9220 Georgetown Pike, 4.7 miles from the Beltway. \$10 adults; \$5 high school students. Info: David Pacelli at 703.757.8648, www.TheLeesburgAssembly.org

THE FSGW ENGLISH COUNTRY DANCES
ARE LISTED ON PAGE 4.

———— *INTERNATIONAL* ————

Sundays

ALPINE DANCERS • NEW CARROLLTON, MD
SUNDAY, MAY 20 • 3–5:30 PM

May 6 will be a performance at Blob's Park. Alpine Dancers are a performing and teaching folk dance group specializing in graceful and lively couples and trio dances from Austria, Germany, and Switzerland. Looking for energetic beginners. Free, open practice at New Carrollton Municipal Center, 6016 Princess Garden Pkwy on the 20th. For info: www.alpinedancers.org, caroltraxler@yahoo.com or 301.577.3503.

*Mondays***BETHESDA INTERNATIONAL FOLK DANCERS • MD
MONDAYS • 7:30–10:00 PM**

Come join a very friendly group and learn dances from all over the world. Beginners 7:30–8, intermediate/advanced 8–10. Mostly request dancing 9:15–10. No partner necessary, all ages and levels of expertise welcome. Wood floor; mostly recorded music. Lawton Community Center, 4301 Willow Ln. 20815. Classes here require registration with Montgomery County. Forms available at the class. \$7 per class. Info: **Phyllis** or **Brandon Diamond** at 301.871.8788, www.diamonddancecircle.com, or diamonddancecircle@comcast.net

*Wednesdays***COLUMBIA INTERNATIONAL FOLK DANCING • MD
WEDNESDAYS, • 8–10:30 PM**

Dancing is from 8:30 to 10:30 at Kahler Hall with a class at 8. Cost: \$5, Senior, \$3. Info: **Ethel** at 410.997.1613, or **Ed** at 410.740.2309. www.columbiafolkdancers.org

*Thursdays***CHEVY CHASE INTERNATIONAL FOLK DANCERS
WASHINGTON, DC
THURSDAYS • 7:30–9:30 PM**

Chevy Chase Community Center, 5601 Connecticut Ave., NW (at McKinley). Instruction and walk-through until 8:30. All levels welcome, no partner necessary. Recorded music. Leader: **Roland Forbes**. For info: **Naomi Rogers** at 301.438.0063

**CIRCLE DANCE • ARLINGTON, VA
THURSDAYS • 7:45–9:45 PM**

Come and explore dances from all over the world in a spirit of meditation and joy. All dances are taught. Recorded music. Unitarian Universalist Church of Arlington, Rte 50 at George Mason Dr. Donation requested. Info: **Judie David** at 703.451.2595 or Vedavid@starpower.net

**MOUNT VERNON INTERNATIONAL
FOLK DANCING • ALEXANDRIA, VA
THURSDAYS • 8–10 PM**

Beginners to advanced—all are welcome! Easy dances 8 to 8:30, followed by requests and advanced instruction. Join our friendly, diverse group on a beautiful dance floor. No partner necessary. Donation \$4. Mt Vernon Unitarian Church, 1909 Windmill Lane. Info: **Patricia** at 703.535.3333 or pdw@patriciadaywilliams.com

*Fridays***GREENBELT INTERNATIONAL FOLK DANCING • MD
FRIDAYS • 8:30–10:45 PM**

The focus is dance from Eastern Europe and Scandinavia. No partner or experience necessary. Beautiful dance floor. Teaching 8:30 to 9:15, requests 9:15 to 10:45. \$7; \$12 on 1st Fridays (live music). Greenbelt Community Center Dance Studio, 15 Crescent Rd. Info: **Larry Weiner** at 301.565.0539, larry@larryweiner.com or www.larryweiner.com/FridayDance.htm

*Saturdays***CCE CEILI • HERNDON, VA
DATE TBA CHECK WEBSITE • 7:30–10:30 PM**

Music by the *Bogwanderers*. Lesson at 7. CCE members \$12, non-members \$15 family max. 2739 West Ox Rd., 20171. Info: cceptomac.org. Info: **Sharon Kourz**, 703.631.9179, or kourpsc@cox.net

*ISRAELI***ISRAELI DANCING • CHEVY CHASE, MD
TUESDAYS • 7–10:15 PM**

Instruction from 7 to 7:45. The group focuses on building a repertoire of both classic and newer Israeli dances in a friendly, welcoming atmosphere. Recorded music. Light refreshments served. Ohr Kodesh Congregation, 8300 Meadowbrook Lane, 20815. \$8/adults, \$6/students. Info: **Mike Fox** at 240.424.0805, www.markidmike.com or markidmike@gmail.com

**ISRAELI DANCING • GREENBELT, MD
SATURDAY, MAY 5 • 8–11:15 PM**

Israeli “Oldies” party (dances before 1990). Recorded music, light refreshments. Cost \$7, free for ages 18 and under. Greenbelt Community Center, 15 Crescent Rd., 20770. Info: **Ben Hole**, 301.441.8213, ben.hole@verizon.net

*MORRIS***ARLINGTON NORTHWEST MORRIS • VA
MONDAYS • 7:30–9 PM**

Learn and perform the traditional morris dances of Northwest England, which combine simple footwork with power and precision. We are a welcoming group of women who practice in a great place with a wooden floor (easier on your knees) at the Unitarian Universalist Church. Info: suzelise@comcast.net or nwdancers@comcast.net

ROCK CREEK MORRIS WOMEN • SILVER SPRING, MD
WEDNESDAYS • 7:30–9:30 PM

Learn to dance in the ancient English morris tradition, and you'll get all the aerobics you need. Join a strong community that dances, plays, sings, and drinks together. Montgomery Knolls Elementary School, 807 Daleview Dr., 20901. Info: **301.927.6373**, louiseneu@earthlink.net or www.uswet.com/RCMW.html

FOGGY BOTTOM MORRIS MEN • SILVER SPRING, MD
THURSDAYS • 8–10 PM

Experience the vigorous thrill of the morris and the camaraderie of a morris team! Learn and perform dances from English Cotswold villages, mummers' plays and occasional long-sword dances. We welcome new and slightly used dancers to our practices at Highland View Elementary School, 9010 Providence Ave., 20901 and/or at the pub afterwards. squire@fbmm.org, **Alan Peel** at **301.920.1912**, www.fbmm.org

SCANDINAVIAN

NORWEGIAN DANCE & POTLUCK
NO PARTY THIS MONTH

Bring clean shoes to wear, food to share, and \$\$ you can spare to a Norwegian-style house party. Mesmerizing live music and addictive dances, some with elements like swing or hambo. Beginners and listeners welcome. No need to bring a partner. Info/dirs: <http://MAND.fanittull.org> or Jenny, pi@xecu.net, **301.371.4312**.

SCANDINAVIAN DANCE • GREENBELT, MD
SATURDAY, MAY 19 • 7–10 PM

Scandia DC sponsors a 3rd Saturday dance. This month features live fiddle music by **Loretta Kelley**, the most accomplished American-born hardanger fiddle player. No partners necessary. Teaching 7–8: Busserull, a lively Norwegian dance in 2/4 time. Greenbelt Community Center Dance Studio (wood floor), 15 Crescent Rd. \$7 Info: **202.333.2826**, linda@scandiadc.org, www.scandiadc.org.

SCOTTISH

“Sic as ye gie, sic wull ye gie” –
(Scottish for: You'll get out of life as much as you put in!)

SCOTTISH COUNTRY DANCE • BETHESDA, MD
MONDAYS • 8–10 PM

NIH Building T-39 (Dance and Aerobic Center). \$5. Call/e-mail in advance for directions. Info: **John MacLeod**, **301.622.5945** or blackolav@cs.com

SCOTTISH COUNTRY DANCE • GREENBELT, MD
TUESDAYS • 8–10 PM

Dance all year 'round at the Greenbelt Community Center. \$5. Info: www.rscds.greaterdc.org or Jay Andrews at andrewj@erols.com or **703.719.0596**

SCOTTISH COUNTRY DANCE • ALEXANDRIA, VA
WEDNESDAYS • 8–9:45 PM

Learn Scottish dance at the Durant Center, 1605 Cameron St., 22314. \$5. Info: lara.bainbridge@gmail.com or elanyi@cox.net

SWING/BLUES

SLOW BLUES AND SWING • GLEN ECHO, MD
THURSDAYS • 8:15–11:30 PM

Popular weekly Blues Dance in the “back room.” Come early as it is selling out. Beginner lesson from 8:15 to 9. DJ **Mike Marcotte** and guests play incredible blues from 9 to 11:30. \$8 for lesson and dance. Sprung sold wood floor. Info: **Donna Barker** at **301.634.2231** or www.CapitalBlues.org

SLOW BLUES AND SWING • GLEN ECHO PARK, MD
SUNDAY, MAY 6 • 7–11 PM

Sunday Blues dance in the Back Room featuring *Memphis Gold*. Optional 1½ hour workshop, taught by **Donna Barker** and **Mike Marcotte** at 7. \$17 for workshop and dance, \$12 dance only. No partner required. Info: **Donna** at **301.634.2231** or www.DanceDC.net. 7300 MacArthur Blvd, 20812

WALTZ

AFTERNOON WALTZ • GLEN ECHO PARK, MD
SUNDAY, MAY 6 • 1–6 PM

Dance to the music of *Honeysuckle Rose* in the Spanish Ballroom. Enjoy a lively mix of western waltzes with a few other couples dances including the Texas two-step, Swing and Polka. 30-minute beginner waltz lesson at 3 p.m. Dance from 3:30 to 6. \$10. **Peggy Leiby** and **Ret Turner** from Mostly Waltz in Philly teach a Latin Waltz workshop from 1–3. \$15. Info: www.WaltzTimeDances.org, or call Glen Echo Park at **301-634-2222**

CAJUN/ZYDECO

CAJUN/ZYDECO • GLEN ECHO PARK, MD
SUNDAY, MAY 13 • 3–6 PM

Join us in the Bumper Car Pavilion and dance to *Squeeze Bayou*. 30-min. Cajun dance lesson at 3 pm. \$15. No partner required. Info: **Michael Hart** at **301.762.6730**. 7300 MacArthur Blvd., 20812

DANCES continued

ZYDECO DANCE • GREENBELT, MD FRIDAY, MAY 18 • 8:30–MIDNIGHT

Features **Ruben Moreno** and **Creole Soul**. 30-minute lesson at 8:30. \$18. Info: **301.762.6730** or **www.DancingbytheBayou.com**. At the American Legion Hall 136, 6900 Greenbelt Rd., 20770.

Classes

SCANDINAVIAN DANCE CLASSES • BETHESDA, MD TUESDAYS, MAY 1, 15, 22, 29 7:30 - 9:30 PM

Beginning and advanced dancers welcome. Beginners learn Hambo, *Schottish*, Waltz, *Zwiefacher*, and other couple turning dances. Advanced dancers learn *Springleik*, *Boda*, *Orsa*, *Föllinge*, *Finnskogspols*, *Nigpolska*, *Gam-*

CLASSES continued

malvänster, *Telespringar*, and requests. Sometimes live music. Wear smooth-soled shoes for turning, not running shoes. \$5. Info: **Lisa Brooks** at **240.731.1935**, **lisa@HamboDC.org**, or **www.HamboDC.org**
Directions: Enter NIH at Wisconsin Ave. and the new Gateway Dr. Visitor entrance. Park there, or drive to the south center of NIH and park in NIH permit parking next to Building T-39. Or walk 12 minutes from the Medical Center Metro stop.

THE POTOMAC VALLEY SCOTTISH FIDDLE CLUB FIDDLE CLASS

SUNDAY, MAY 20 • 2:30–8 PM

Scottish tunes learned by ear, then some learned with music, followed by a potluck and jam session. Teacher: Scottish fiddle champion **Elke Baker**. For the location, check **http://www.potomacvalleyscottishfiddle.org/** Info: **Rhonda@RhondaHotop.com** or **703.992.0752**.

Jams/Open Mics/Audience Participation

Sundays

ANNAPOLIS ACOUSTIC JAM • ANNAPOLIS, MD EVERY SUNDAY • 10 AM–12:30 PM

Indoors at the Visitor Center, Quiet Waters Park. Info: **ken.i.mayer@gmail.com**

SCOTTISH TRADITIONAL MUSIC JAM WHEATON, MD

1ST SUNDAYS • 4–7 PM, CHECK WEBSITE

Royal Mile Pub, 2407 Price Ave., 20902. Musicians welcome. Info: **dcscottishsession.blogspot.com** or contact **Peter Walker** at **boghadubh@gmail.com**

CABOMA JAM • ARLINGTON, VA 2ND AND 4TH SUNDAYS • 2 PM

Capitol Area Bluegrass and Old-Time Music Association (CABOMA) holds jams the 2nd and 4th Sundays of each month. Lyon Park Community Center, corner of N. Fillmore and Pershing, 22201. Info: **Dave** at **301.274.3441**.

SACRED HARP SINGING • SANDY SPRING, MD 3RD SUNDAYS • 4–6 PM

Singing is followed by a potluck supper. Contact **Kent Beck** at **301.774.3183** or **kent.beck@ssfs.org** to confirm. Location: Small schoolhouse behind Community Building, 17801 Meetinghouse Rd, 20860, about 10 miles west of Laurel, MD.

Mondays

BALKAN SINGING • TAKOMA PARK, MD EVERY MONDAY • 8 PM

Informal singing group, *Sedenka*, meets in Northwest DC/Takoma Park to sing Balkan village songs. Interested novices welcome. Info: **Katya**, **301.270.4175** or **Katya@partan.com**, or **Joan** at **202.363.6197**.

DC BLUEGRASS UNION VFW BLUEGRASS JAM • TAKOMA PARK, MD 1ST & 3RD MONDAYS • 7–10 PM

Free. Non-smoking. At Veterans of Foreign Wars Post 350, 6420 Orchard Ave. (corner of 4th Ave.), 20912, near New Hampshire and Eastern Aves. Info: VFW Post 350 at **301.270.8008** or **Barb Diederich** **barb@barbdiederich.com**

Tuesdays

FOLK CLUB OF RESTON/ HERNDON • HERNDON, VA EVERY TUESDAY • 7:15 PM



Amphora Diner Deluxe, 1151 Elden St. 20170. Open-mic format. 2nd Tuesday includes 25-minute member showcase; monthly concerts usually 3rd Tuesday, price varies. Smoke-free environment. Info: **www.restonherndonfolkclub.com**, **703.435.2402**.

**SEA CHANTEY OPEN PUB SING
WHEATON, MD, AND WASHINGTON, DC
1ST AND 4TH TUESDAYS • 8–10 PM**

The Ship's Company chanteymen host open-mike sea-chantey sings. No cover/minimum; arrive early for a table. Participation encouraged but not mandatory. Requests are honored if possible. Mostly *a cappella* but instruments are welcome. Info: **Myron Peterson** at ructic@yahoo.com or www.shipscompany.org

- 1st Tuesdays – **American Legion Post 268**, 11225 Fern St., Wheaton, MD. (*New location*)
- 4th Tuesdays – **Laughing Man Tavern**, 1306 G St. NW, DC 20005

**SACRED HARP SINGING • SE WASHINGTON, DC
3RD TUESDAYS • 7–9 PM**

Capitol Hill Presbyterian Church, **201 4th St. SE**, 20003. The church does not have weeknight parking, but some street parking is possible. It is less than a ten-minute walk from Capitol South and Eastern Market Metro stations. To find the singing space, go around the left/south side of the church and enter by a side door at street level. Info: **760.856.0961**

Wednesdays

**SEA CHANTEY OPEN PUB SINGS
BALTIMORE AND ANNAPOLIS, MD
2ND & 3RD WEDNESDAYS • 8–10 PM**

The Ship's Company chanteymen host open-mike sea-chantey sings. Participation encouraged but not mandatory. Requests are honored if possible. Info: **Myron Peterson** at ructic@yahoo.com or www.shipscompany.org

- 2nd Wednesdays – **Wharf Rat**, 801 S. Anne Street (Fell's Point), Baltimore 21231
- 3rd Wednesdays – **Galway Bay**, 63 Maryland Ave, Annapolis 21401

**ARLINGTON JAM! • ARLINGTON, VA
3RD WEDNESDAYS • 7–10:30 PM**

Fiddles, guitars, all instruments welcome! Intermediate and advanced players interested in old-time, blues, Scandinavian, swing, and other styles. First Friday and third Wednesday at 1909 N. Ohio St. 22205. Info: **Lilli Vincenz**, 703.532.2731 or FiddlerLilli@verizon.net



**CAJUN JAM • GREENBELT, MD
4TH WEDNESDAYS • 7–9 PM**

Monthly open Cajun jam and dance. New Deal Café, 113 Centerway, Roosevelt Center, 20770. More info: **301.474.5642** or www.newdealcafe.com. Check website to confirm.

Thursdays

**IRISH TRADITIONAL/BLUEGRASS MUSIC SESSIONS
FREDERICK, MD
EVERY THURSDAY • 7 AND 8:30 PM**

At Boe's Strings, 26 S. Market St., 21701. Info and tune list at www.BoesStrings.com or **Boe** at **301.662.0750**

**FOLKSONG SING-IN • WHEATON, MD
3RD THURSDAYS • 8–10 PM**

Join local musician **Brad Howard** every month for this musical gathering. Everyone gets a chance to lead the room in song. Bring your favorite folk tunes, and even your instruments if you feel so inclined. At the very least, bring your voice and be prepared for a great evening of song and pub-styled fellowship. The Limerick Pub is at the corner of Elkin and Price, a few doors down from the Royal Mile Pub, 11301 Elkin St., 20902 www.thelimerickpub.net

Fridays

**ARLINGTON JAM! • ARLINGTON, VA
1ST FRIDAYS • 7–10:30 PM**

See Wednesday listing.

**GLEN ECHO OPEN BAND • GLEN ECHO, MD
2ND FRIDAYS • 8:30–11:30 PM**

The fabulous Glen Echo Open Band plays for the second-Friday contra dance. All instruments and levels of ability are welcome. Find recordings, tunebook names and page numbers of tunes played by the Open Band at www.openbandonline.com. The site works best using iTunes on a PC or a Mac. Info: www.fridaynightdance.org

Saturdays

**ARCHIE EDWARDS BLUES JAM
RIVERDALE, MD
SATURDAYS • 1–5 PM**



Acoustic instruments, all skill levels and listeners welcome. 4701 Queensbury Rd, 20737, across from the Riverdale MARC train station. Ample parking. Free, but donations welcome. Info/confirmation: **301.396.3054** or www.acousticblues.com

**HAMMERED DULCIMER JAM • MCLEAN, VA
SATURDAY, MAY 19 • 1:30–4:30 PM**

Hammered dulcimer players meet monthly to swap tunes and play together; all levels welcome. The May jam is at the Dolley Madison Library, 1244 Oak Ridge La., 703.356.0770. Other acoustic instruments welcome. Info: Ellie at sites.google.com/site/nvhdplayers

FSGW AD Policy

Editorial Policy for Ads: Ad content must be reviewed and approved by the editor. Please refer to the editorial policy. Basic Charges: 1/4 page ads (3.4" x 4.5" or 7.25" x 2.5"): \$65 for one month, \$120 for two. Commercial business: \$8 for 10 words. Non-commercial and individual: \$4 for 10 words. 25% discount for any single ad placed in 11 consecutive issues (one year) and paid in advance. We will work with you on larger ads. Copy, with check made payable to FSGW, must be received by the newsletter deadline. Mail to the Editor: Roxanne Watts, 12190 Abington Hall Place, #202 / Reston, VA 20190

Storytelling

**TELLING MOMENTS STORYTELLING THEATRE
SATURDAY, MAY 5 • 7:30 PM**

Master storyteller **Robert Kikuchi-Yngojo** presents **Pearl's Light: Tales from Asian Sages and Liars**, drawn from the myths and folk-tales of the Pan-Asian world. Has appeared at the Kennedy Center, Smithsonian on NPR and other esteemed stages. Seekers Church 276 Carroll St., NW, 20012, \$15, \$13 senior/student www.telling-moments theater.com

**TALES IN THE VILLAGE • CHEVY CHASE, MD
FRIENDSHIP HEIGHTS COMMUNITY CENTER
WEDNESDAY, MAY 16 • 7:30 PM**

Steven Hollen, from West Virginia, as Mark Twain. Free, for adults. 4433 South Park Drive. Host **Ellouise Schoetler**, sponsored by Friendship Heights Village Council. Contact **Ellouise** for details and to sign up for e-notes at ellouise9112@aol.com

Workshops, Weekends, Festivals & Special Events

**RIVERDALE ARTS FESTIVAL • RIVERDALE, MD
SUNDAY MAY 5 • 11–6PM**

Featuring the Archie Edwards Blues Barbershop. Acoustic blues jam at Archie's Barbershop, 4701 Queensbury Rd from 2:30 to 4:30. Preceding the jam the **Sheryl Sears Trio** from 1:30 to 2:15. Additional music will include a children's gospel choir, regional Mexican music, jazz, oldies rock and much, much more.

**MARYLAND SHEEP AND WOOL FESTIVAL
WEST FRIENDSHIP, MD
SATURDAY, MAY 5–SUNDAY, MAY 6**

The Maryland Sheep and Wool Festival will be held, as usual, at the Howard County Fairgrounds. **Bill Mayhew** will be telling stories there with a little help from his friends. **Maggie Sansone** will be performing in the main building both days, and **Walt Michael** and others from Common Ground in Westminster, MD, will perform all weekend near the Festival Shop. Several FSGW members also will be vendors at this, the largest Sheep and Wool Festival in the States. Free. 2210 Fairground Rd., 21794, www.sheepandwool.org, 410.531.3647.

**SHEPHERDSTOWN MAY DAY CELEBRATION
SUNDAY, MAY 6 • 10–6 PM**

Lead off with morris dancing at 10 am, then the 1 pm parade down German St. to the May Pole, all followed by revelry on the green. Sellengers Round, morris dances, songs, poetry and more. Each team will perform under the May Pole. 3:30—dance performances at the Bavarian Inn. www.smad.us.

**WASHINGTON REVELS EVENTS
SATURDAY, MAY 5 • NATIONAL CATHEDRAL, DC**

At the 2012 Flower Mart at the National Cathedral, Wisconsin & Massachusetts Aves., NW, Washington, DC. Beginning at 12 noon, the event features plants, herbs, food, puppet shows and boutiques, along with the one-hour Revels performance with song, dance, the May Queen, games, a mummer's play, morris dance and a Maypole. www.allhallowsguild.org

**SATURDAY, MAY 19 • FESTIVAL DAY
SILVER SPRING, MD**

Rachel Carson Meadow, North Four Corners Park, 211 Southwood Ave., Silver Spring, MD. Register by May 15

WORKSHOPS, WEEKENDS, FESTIVALS & SPECIAL EVENTS continued

and become part of a “mini-revels” that includes a band, actors, singers, a Mummer’s play, crafts, decorations, and backstage support staff. The 4 pm procession ushers in the free public performance. www.nfccca.org/meadow.htm

CHRISTMAS REVELS ADULT AUDITIONS FRIDAY, MAY 18 AND SATURDAY, MAY 19.

By appointment only. [//revelsdc.org/auditions-adults-2012.html](http://revelsdc.org/auditions-adults-2012.html)

AMERICAN BANJO FRATERNITY MEETING WITH FREE CONCERT MAY 19 • 7:30 PM • PUNXSUTAWNEY, PA

A performance of 1900s music at the Pantall Hotel, 135 East Mahoning St., 15762. 814.938.6600. Featuring solo and group performances on five-string banjos of different sizes using nylon strings and bare fingers, no picks. For further information, please go to www.banjofraternity.org

PINEWOODS • PLYMOUTH, MA MUSIC AND DANCE CAMPS

Come spend a week or weekend dancing or taking instrumental classes in open-air pavilions with nationally-known instructors, swimming and canoeing in two fresh water ponds, listening to the wind in the pine trees, and sleeping in a rustic cabin in the woods.

Dancers and musicians with any level of experience are welcome. Some family sessions. www.pinewoods.org

AUGUSTA HERITAGE CENTER • ELKINS, WV MUSIC AND DANCE CAMPS

A Center of Excellence, Augusta Heritage Center provides seven weeklong groups of programs as well as many special events in the Heritage Arts on the beautiful campus of Davis and Elkins College in West Virginia’s Mountain Highlands. www.augustaheritagecenter.org

SOUNDCATCHER: PLAY BY EAR • ARLINGTON, VA JUNE 17–23

Coaches: **Tina Chancey, John Tyson**. Learn to play by ear. SoundCatcher combines what you know and what you hear to make an aural map of the tune. Use your ear like a tape recorder, recognize melodic patterns and forms. Improvement guaranteed! Just need to know the note names and how to find them on your acoustic instrument. Proven and taught since 1982! \$250-\$275. Info: **Tina Chancey, 703.525.7550, tinachancey@mac.com**

SLIGO CREEK HEDGE SCHOOL IRISH MUSIC/ CULTURE CAMPS JUNE AND JULY • SILVER SPRING, MD

For children and teens, ages 7–19, grouped according to age. Pennywhistle, bodhran (Irish drum) instruction, singing, poetry, field trips to instruments builders, crafts and more for the younger set and for teens: ensemble performing and more. For a full schedule: **Karen Ashbrook, 301.592.0101, mail@karenashbrook.com** or karenashbrook.com.

SUMMERTUNES • FREDERICK, MD SATURDAY, JULY 28

Save the date for another splendid day of music-making with fiddler **Andrea Hoag** and pianist **Liz Donaldson**. Information available soon at <http://www.contradancers.com/mmfac/>, or contact Liz Donaldson at liz@us.net or 301.986.1291, or Andrea Hoag at andrea@andreaHoag.com or 301.565.2777.

ON THE DANCE TRAIL CONTRA DANCE LINKS FOR DANCE GYPSIES

If you’re thinking of hitting the Dance Trail this summer, as **Roger Broseus and Betty Nordan** did earlier this year, see www.contradancelinks.com for dances throughout this country and worldwide. Roger and Betty took off on an 82-day trip across country in their 25-foot Airstream, combining three loves—family, dancing and camping. The excursion included a get-together with Betty’s family in Arizona, a dance weekend at St. Louis Obispo in the Monterey area, then more contra and English dance in Las Vegas (off the strip!) ... as well as camping in Yellowstone, Death Valley and Sequoia National Parks. It was a dream of a trip for this couple who met at a contra dance at an Augusta Heritage Dance Camp, over a decade ago. They even ran into other members of this dance community—**Bruce Henderson** and **Marian Flynn** and **Bill Berlin**—at the California dance! Deepening friendships within the dance community and a greater awareness of the “flavors” of dance in various parts of the country, as well as beautiful memories of good times together made this a not-to-be-forgotten adventure for both. Roger blogs at “Dance Niche,” bronord.com/dance, and enjoys volunteering for ECD activities.

A link for English Country Dance around the United States

<http://www-ssrl.slac.stanford.edu/~winston/ecd/hotbeds.htmlx> or <http://tinyurl.com/7zezhqm>

Equally useful is the listing of dance groups at the Country Dance and Song Society, CDSS Affiliates

<http://www.cdss.org/cdss-group-affiliates.html>

“Oh the Delights, the Heavenly Joys”

The Twenty-Third Annual Potomac River Sacred Harp Singing Convention

—Isaac Watts

Maura Burns and Amber Smith, co-chairs

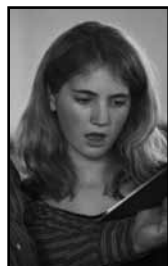
Photos and Article by Miriam Kilmer

Singers came from as far away as Atlanta, Georgia; Boston, Massachusetts; and even France to celebrate **The Twenty-Third Annual Potomac River Sacred Harp Singing Convention**, “a traditional and powerful singing of American shape-note hymns, fusing tunes, and anthems in unaccompanied four-part harmony from *The Sacred Harp*.” It was held on March 31 and April 1, 2012, at The Great Falls Grange, in Great Falls, Virginia. As always, all comers were made welcome: beginners, experienced singers, and listeners. The singers came in all colors, shapes, sizes, and ages. *The Sacred Harp* (1991 Edition) tunebooks were available for loan and purchase.



Rosemary Greenaway

Daughter of a local Sacred Harp singer.



Special features this year included a singing school, led by **Dan Hunter** of Easton, Pennsylvania; a New Traditions Singing (new songs or songs from tunebooks other than *The Sacred Harp*, 1991 Edition); and an extra singing from the soon-to-be-published *Shenandoah Harmony*. Thanks to co-chairs **Maura Burns** and **Amber Smith** for a wonderful convention.

Although the songs are written in three or four-part harmony, many parts are often doubled, resulting in six or even seven-part harmony (not including spontaneous embellishments). The sound was throbbing, magnificent, often raw, haunting, polyphonic; the tone ranged from cold despair to triumphant joy.

Singers put forth extra effort to make sure that there were large quantities of delicious food for both days, including many home-cooked dishes. As we have done for several years, we strove to make this a zero-waste convention, with a combination of recycling, composting, and making environmentally conscious choices when purchasing supplies. **The Potomac River Convention** has a reputation for “cutting up,” and this year was no exception, with some highly seasonal tom-foolery. The free-will collections were taken up in brightly colored Easter baskets by treasurer **Liz Zoe Meitzler**, while, on Sunday morning, the chaplain announced that there was a problem with the electrical outlets, and we would have to go without hot coffee for the day. There was a tremendous groan from the crowd, followed by a cheerful “April Fool!” from the chaplain.



Mary Ann Daly

Officers of the Convention: Maura Burns, Amber Smith, John delRe, Liz Meitzler, & Norah Dunn



Gillie Campbell and Susan Green





332 Boyd Avenue
Takoma Park, Maryland 20912

PRESORTED
FIRST CLASS MAIL
US POSTAGE PAID
ROCKVILLE, MD
PERMIT #4297

www.fsgw.org

Printed on recycled paper.

Address Service Requested

FIRST CLASS

The Folklore Society of Greater Washington is a not-for-profit [Section 501(c)(3) of the IRS code] institution, and we encourage the financial contributions of our members. Contributions in excess of annual dues are welcome and may be tax-deductible. Please mail your gift to FSGW, c/o Jerry Stein, 3612 Greenway Pl., Alexandria, VA 22302-2005. Subscriptions to the Newsletter are available only outside the Greater Washington Metro area.

FSGW IS DEDICATED TO PRESERVING AND

**PROMOTING TRADITIONAL FOLK ARTS IN THE
WASHINGTON, D.C., METROPOLITAN AREA.**

**MEMBERSHIP IS OPEN TO ALL WHO SUPPORT THESE GOALS
UPON PAYMENT OF DUES.**

FSGW Membership Form

RENEWAL NEW ADDRESS NEW MEMBERSHIP*

I WANT ONLY THE ELECTRONIC COPY OF THE NEWSLETTER
(NO PAPER COPY SENT)

	INDIVIDUAL	FAMILY
1 year	<input type="checkbox"/> \$33	<input type="checkbox"/> \$45
2 years	<input type="checkbox"/> \$62	<input type="checkbox"/> \$85
3 years	<input type="checkbox"/> \$91	<input type="checkbox"/> \$125
LIFE	<input type="checkbox"/> \$550	<input type="checkbox"/> \$800
Student	<input type="checkbox"/> \$25	

Newsletter Subscription ONLY \$25
Available ONLY to those living OUTSIDE the Greater Washington Metro area.
Newsletter Subscription carries NO membership privileges.

***If you are a new member, where did you get this newsletter?**

- at Glen Echo Park (which event? _____)
- Another FSGW Event (which one? _____)
- From a friend who is a member
- At my public library Other _____

Name(s) _____

Address _____

City _____ State _____ Zip _____

Phone(s) _____

H: _____ - _____ - _____ W: _____ - _____ - _____

E-mail: _____

May we list you in our Membership Directory?
(FSGW does not provide mailing lists to any other organizations.)

- Yes No
- Yes, but do not list my:
 - address home phone work phone e-mail



Send form and check made payable to FSGW to:
FSGW Membership • 332 Boyd Avenue, Takoma Park, MD 20912