



# NEWSLETTER

Volume 50, Number 8

fsgw.org

April 2014



## The 25th Annual Potomac River Sacred Harp

### Singing Convention

Saturday and Sunday,

April 5-6, Great

Falls, VA

10 am-3:30 pm

Saturday

10 am-3 pm

Sunday



*Continued on page 2.*

## Ginny Hawker and Tracy Schwarz

Saturday, April 5

8 pm

Ginny Hawker and Tracy Schwarz bring us traditional American music: close harmonies of bluegrass, gospel and old time music.



*Full information on page 3.*

## Chesapeake Dance Weekend

Friday, April 11 to

Sunday, April 13

It's here! For decades, this three-day extravaganza has been entertaining dancers with exciting

programming and unforgettable music. This year's event, on the banks of the Chesapeake Bay, will be no exception. And there's still time to register!

Headlining the weekend are the energetic Boston-based *Nor'easter* and the dramatically



*Continued on page 9.*

## Taste and Tell

Nourish Body and Soul

at this *First-of-its-Kind*

Foodways Event

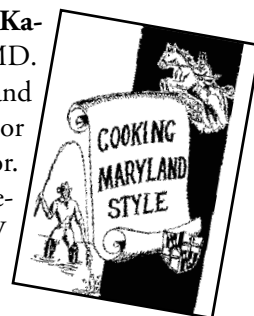
Saturday, April 26

1 to 4 pm

Come to the party of food lovers at **Ka-thie Mack's** house in Takoma Park, MD.

Your favorite recipes, anecdotes, and personal stories about meals prepared or shared are just what we're looking for. This is Foodlore! We're gathering material for the up-and-coming FSGW

foodways book—the material's been coming in steadily, and still we'd like to accelerate the pace. Sample recipes from the book,



*Continued on page 4.*

# The 25th Annual Potomac River Sacred Harp Singing Convention

*Continued from front page*

The year of jubilee is come! During the first weekend in April, singers from the D.C. area and beyond will gather again at the **Great Falls Grange** for two days of raucous, joyful four-part harmony singing. This year we're celebrating 25 great years of the Annual Potomac River Sacred Harp Singing Convention in the D.C. area. No experience is necessary; just come as you are and enjoy some great traditional singing, food, and fellowship!

What is **Sacred Harp**, you may ask? Sacred Harp (or "shape-note") singing is a democratic and participatory American singing tradition that brings together families and communities to sing traditional hymns, anthems, psalm tunes, fuguing tunes, and more. It is a living tradition with roots in the choral music style taught by New England "singing masters," such as **William Billings**, in the eighteenth century. The music is sung *a cappella* and at full voice, using a system of "patent notes" developed to help singers sight-read more easily. Singers sit in a "hollow square" and take turns leading songs. Come and sing with us and you may find yourself hooked!



On Saturday, we will sing from the beloved tunebook *The Sacred Harp* (1991 revision), the oldest tunebook in continuous use in North America. On Sunday, we will be singing from *The Shenandoah Harmony* (2013), a new shape note tunebook compiled by a group of singers from the mid-Atlantic region, including **John del Re** and **Kelly Macklin**, who have organized singings in the area for many years. The book was inspired by the tunes of the Virginia-based composer **Ananias Davisson** (1780-1857) and has won a devoted following among singers throughout the world. Registration opens at 9:30 am both days. The Grange is at 9818 Georgetown Pike, Great Falls, VA 22066.

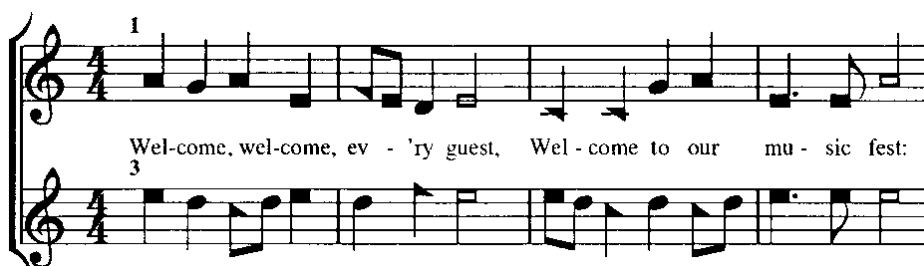
There will be a potluck dinner on the grounds both days. After the singing on Saturday, there will be a social gathering at the home of local singers (location to be announced at the convention). At the social, there will be a **New Traditions** singing after supper (7 pm), featuring songs from the newly rediscovered 1821 *Songs of Zion* tunebook as well as old and new tunes not included in *The Sacred Harp* and *The Shenandoah Harmony*. Composers are welcome to bring their own songs to sing!

For more information, please visit the convention website at <http://www.his.com/~sabol/PRC/>

If you have questions about the convention or would like to volunteer, please contact the Chair, **Mary Helen Dupree** (e-mail [mhd33@georgetown.edu](mailto:mhd33@georgetown.edu) or call 202.714.2486).

If you would like to submit a song to the New Traditions singing, please contact **Mary Ann Daly** ([madaly@verizon.net](mailto:madaly@verizon.net)).

To learn more about Sacred Harp, please visit [fasola.org](http://fasola.org) *The Shenandoah Harmony* runs an active website at <http://www.shenandoahharmony.com/>





# Ginny Hawker and Tracy Schwarz

**Saturday, April 5 • 8 pm**

Ginny Hawker and Tracy Schwarz bring us traditional American music: close harmonies of bluegrass, gospel and old-time music.

Growing up in West Virginia, **Ginny** learned the old songs and styles from her large musical family. She and her father, Ben Hawker, taught the singing styles learned in his Primitive Baptist Church for the Augusta Heritage Workshops in Elkins, WV, and they appeared at folk festivals, including the Smithsonian Folklife Festival.

**Tracy** learned the old songs as they emerged into the folk boom of the 1950s and '60s, especially around

New York and New England; he took up banjo and guitar early, mandolin and bass in college, and fiddle later. When **Tom Paley** left the *New Lost City Ramblers* in 1962, he became the new third member of that string band, with **Mike Seeger** and **John Cohen** playing the old-time music in the old-time way. He studied fiddle in the '70s with Cajun master **Dewey Balfa** and soon began teaching that.

In 1988, both Ginny and Tracy were invited to teach their various traditions for the Ashokan Fiddle and Dance Camp near Woodstock, N.Y. They hit it off musically, then personally. Their musical histories and talents blended beautifully, and for close to 20 years now, they have toured their music in concerts and festivals around the U.S., Canada and England. Each summer they teach southern traditional singing at music camps, introducing people to the music they love. Recently they began teaching students in their West Virginia home, just two students at a time over two intense days.

They teach the music they have performed over the years: early country songs of the Carter Family era, tight and thrilling harmonies of classic bluegrass duets, fiddle tunes from near and far, gospel songs passed on in mountain families, historic ballads and heart songs, and the occasional contemporary selection written in the old traditions. Tracy's *Poor Old Dirt Farmer* has been mistaken for a traditional song more than once.

There should be opportunities to join in, so bring your voice, but you're likely to be captivated by Ginny's glorious alto, the amazing blend of their voices, the breadth of Tracy's instrumental talents and the fascinating stories they sing.

Be transported to the West Virginia mountains, with a few detours along the way, at the **Washington Ethical Society Auditorium, 7750 16<sup>th</sup> St., NW, Washington, DC 20012.**

**General admission \$20, FSGW members \$15.**



# Chocolate— Morning, Noon, and Night Sunday, April 27, 1 to 3 pm *Chocolate is not just for dessert!*



Join us as we teach you a mouth-watering assortment of recipes featuring that most beguiling of treats. The allure and lore of the cacao bean and its derivatives is truly global, and we'll touch on the more unusual uses, as well as the sweet sublime. **Laura Schultz**, MSN, returns to lead the class with clear instructions and the enthusiasm that made her first class so enjoyable.



She's also a certified wellness instructor, and will cover the healthy aspects of the subject. Chocolate salad dressing? Come see for yourself. **\$20 members, \$25 non-members.** Tickets at **fsgw.org**, click on Foodways on the sidebar.

Class will be held at the Hill Center kitchen and is participatory. Limited to 15, so reserve early. 921 Pennsylvania Ave., SE DC. **www.hillcenterdc.org**, More about Laura at **www.abundantwellnesscoaching.com** Class info: **food@fsgw.org**

## **Taste and Tell:** Nourish Body and Soul *continued from front page.*

Share stories related to these recipes, your culinary heritage, or present-day food-related traditions. This is Folklore!

So, come join us! There are several ways to participate:

Volunteer to be interviewed for the book by **Shefa Nola-Benoit**, an aMAZing story-catcher who is trained in the collecting of oral histories. We are so fortunate to have her with us. This is an opportunity to memorialize a loved one, commemorate an occasion, or just remember something fun. Tips for how to prepare for the interview will be sent out in advance and are posted on the website, **fsgw.org**, under Foodways.

Or...as many have done...bring a favorite written recipe, one that is stained and faded and dog-eared, and well-loved. Just the recipe, or the recipe with a remark, anecdote, brief story; either way is fine. Best of all, bring the dish for all to share!

And...there will also be a cookbook exchange. Bring one (lightly used, in good condition is fine) and take one home! Join us, as we build our Foodlore Community with fun, food and fables! See you there.

Kathie's bungalow-style home is located in Takoma Park, MD, three block from the Takoma Metro. To reserve your space, for directions or further info, e-mail **food@fsgw.org** or call **703.618.1799**.

## **Judy Cook Publishes Book of Family Letters**



Long-time FSGW member Judy Cook has recently published her great-great-grandparents' Civil War letters, bringing them to life in print as she has on the stage with her one-woman shows. Her book, *A Quiet Corner of the War; The Civil War Letters of Gilbert and Esther Claflin, Oconomowoc, Wisconsin, 1862–1863* describes the day-to-day life and heart-tugging concerns of both the soldier in the field, and his wife at home, managing farm and family. 150 years later, these people seem completely real to the reader. The book also illuminates some aspects of the wartime North that have been overlooked in Civil War histories.

Judy tours universities, libraries, and historical societies, performing multimedia presentations based on the Claflin letters and songs of the Civil War era. Contact: **judy@judycook.net** or **301-776-4314**. The book can be purchased at Amazon.

## **Stream in Dennis and Judy Cook's Weekly Radio Show**

**Judy and Dennis Cook** recently re-situated to Ohio, and there they are hosting a radio show of their own creation—great songs and tunes from the Anglo-American folk tradition; each week a different topic with a bit of erudition, relevant current events, and audience participation. The show, Glad4Trad, is on WOBC-FM out of Oberlin College and is streamed live on Wednesdays from 2 to 4 p.m. Listen at **http://wobc.org/listen/**. For information, suggestions, or comments: **trad@JudyCook.net**

# Alice Gerrard & Beverly Smith

## Sunday, April 27 • 3 pm

Please join us for an afternoon of wonderful music from **Alice Gerrard** and **Beverly Smith**, two of the most respected old-time musicians playing today. Alice and Beverly have just finished a new recording. This is a rare opportunity to hear them play together in an intimate setting.

**Alice Gerrard** is, quite simply, a legendary musician and singer. For nearly half a century she has been in the forefront of old-time and bluegrass music. Her groundbreaking collaboration with West Virginian **Hazel Dickens** in the 1960s and '70s broke the gender barrier in their field and brought the duo international attention. Their influence cannot be overestimated. Later, as a member of the *Strange Creek Singers*, and with **Tom Sauber** and **Brad Leftwich**, Gerrard continued to explore new musical possibilities.

In 1987, Alice founded the *Old Time Herald*, the foremost magazine devoted to old-time music, and served as its editor for many years.

Alice has a host of recordings, with **Hazel Dickens**, solo and with many great traditional artists. She has received awards from the International Bluegrass Music Association, as well as the North Carolina Folklore Society.

**Beverly Smith** is an accomplished guitarist, singer and fiddler, as well as being an ace dance caller. She is founding member of the *Heartbeats*, and was also a member of *Big Hoedown*, with **Bruce Molsky** and **Rafe Stefaninni**. Recently she has worked and recorded with **Carl Jones**, as well as Irish musicians **Mick Moloney** and **John Doyle**, and bluegrass master **Laurie Lewis**.

Space is limited, so reservations are required for this concert. At the home of Sondra and Andy Wallace, Largo, Maryland E-mail [andy.sondra@verizon.net](mailto:andy.sondra@verizon.net), or call 301-324-7311. Suggested donation is \$15.



# Alix Dobkin

## Saturday, May 3 • 8 pm

Join us in an intimate venue for a rare opportunity to hear an acoustic music legend. Inspired by **Peggy Seeger**, **Pete Seeger** and others, **Alix Dobkin** rose to fame in 1973 with her first album, *Lavender Jane Loves Women*, quickly becoming an icon of women's/lesbian music. She has performed on several continents and written a memoir that was a Lambda Literary Award finalist.

Currently, Alix is touring with songs from her early days, along with music from the albums she's created over the years. She will also have copies of her book *My Red Blood: a memoir of growing up Communist, coming onto the Greenwich Village folk scene, and coming out in the feminist movement* (Alyson Books, 2009).

Here is a quote from Alix's website [www.alixdobkin.com](http://www.alixdobkin.com) :

"...in the late 1950s,... Philadelphia was a hotbed of do-it-yourself culture that magnetized folk music on the East Coast. I was a teenaged, guitar-totin', card-carrying comrade grounding myself in mushrooming crowds of progressive Jews, self-taught musicians, and other local subversives."

At the "Blum Ballroom" in a quiet cul-de-sac near New Hampshire Avenue and the Beltway. Accessibility is ADA compliant. For reservations, information: please contact **Deb Friedman** at 240.593.6237 or [jwanddf@juno.com](mailto:jwanddf@juno.com). **Suggested donation: \$12 to \$25.**



# FSGW Sings/Swaps/Events

## FSGW OPEN SING • CHEVY CHASE, MD FRIDAY, APRIL 4 • 8:30 PM

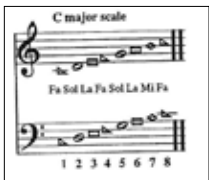
Host: **Syd and Adriane Brown**, [sanda97@gmail.com](mailto:sanda97@gmail.com), **301.589.2395** Theme: Songs of social justice. Note: Please RSVP to the hosts so they can make sure they have enough seating. Please bring a snack for sharing.

## FSGW STORYSWAP • COLUMBIA, MD SATURDAY, APRIL 5 • 7:00 PM

Storytellers, listeners, and anyone teetering on the brink are invited to the home of Marc Young for an evening of shared stories and potluck (kosher) snacks. Expect to meet some members of 4th at 4 Storyfolks here. Free. RSVPs and directions: [bshert951@hotmail.com](mailto:bshert951@hotmail.com)

## FSGW GOSPEL SING • TAKOMA PARK, MD SUNDAY, APRIL 13 • 4–8 PM

Gospel sings are held the second Sunday of every month at various homes. Singing starts at 4 and breaks for a covered-dish supper at 6, with more singing after supper. **Cavan** and **Jean Capps** will graciously host the sing this month. Info/directions: **301.908.6216**, **301.270.4448**, or **240.447.2423**.



## FSGW MONTHLY SHAPE NOTE SINGING ALEXANDRIA, VA SUNDAY, APRIL 27 • 4–8 PM

Monthly on the fourth Sunday, singers enjoy the old-time rhythmic harmonies and spiritual poetry found

in shape-note tunebooks. From 4 to 5 pm singing will be from the 1991 *Sacred Harp*, and after 5 we will also use the 2013 *Shenandoah Harmony* and 1958 *Christian Harmony*. Loaner books for all will be available. Potluck supper from 6 to 7. All are welcome to sing or listen as long as desired. Free, with optional donation for the host church. First Christian Church, 2723 King St. Enter the Fellowship Hall from the rear parking lot.

## DOO WOP SING • BETHESDA, MD QUARTERLY • POTLUCK 5:30 PM, SING 6:30

Sing four-part harmonies on those classic tunes from the 1950s and 1960s from groups such as the *Platters*, *Lovin' Spoonful*, and *Everly Brothers*. Metro accessible. Info: [denelson22@gmail.com](mailto:denelson22@gmail.com) or **240.506.6569**.

## FOODWAYS PROGRAM • SE WASHINGTON, DC QUARTERLY

Events are now booked in the state-of-the-art kitchen at the recently renovated, historic Hill Center at the Old Naval Hospital, 921 Pennsylvania Ave., SE, DC. Info, [food@fsgw.org](mailto:food@fsgw.org)

**Sunday, April 27—Chocolate—Morning, Noon and Night!** — Taught by Laura Schultz, MSN and certified wellness coach. See details on page 4.

**Sunday, June 29—Topic TBD**



## FSGW BOARD MEETING HIGHLIGHTS • MARCH 2014

Board Present: President **April Blum**, VP **Charlie Baum**, Past President **Mary Cliff**, Secretary **Noel-Marie Taylor**, Treasurer **Richard Aigen**, Publicity **Liz Milner**, Publications **Roxanne Watts**, Dance **Steve Burnett**; At-Large **Molly Graham Hickman** and **Tim Livengood**.

Absent: Membership **Janie Meneely**, Program **Marty Summerhour**, At-Large **Steve Winick**.

Also attending: **Ryan Holman**, **Susan Stimpfle**.

- The Society continues to function and remain solvent, with many exciting events coming up.
- **Ryan Holman** was introduced; she will begin to manage and coordinate elements of the website updates.
- Annual elections are coming up. The merits of several online balloting services were discussed. Members are encouraged to sign up for online balloting.
- Planning of 50<sup>th</sup> Anniversary events continues, including a celebration at Glen Echo Park.
- A Concert Hospitality Committee is being formed to take care of various tasks at concerts, including ticketing, refreshments, and general questions.
- Banners were reported to be ordered; their purpose is to strengthen awareness and recognition of the organization at events.



# Jane Voss & Hoyle Osborne

## Thursday, April 24, 8 pm



An evening with **Jane Voss & Hoyle Osborne** is a kind of musical adventure, carried along by the dynamic interplay of two great artists at the top of their game.

**Jane Voss** has all of America in her singing. Every performance includes powerful readings of great contemporary and original songs, as well as rare and classic gems of blues, folk, and popular song, from **Hoagy Carmichael** to the **Beatles**, from **Randy Newman** to **Bessie Smith**. Jane has been researching and bringing to life the music of the great female performers of the flapper era (the 1920s), especially as it relates to the American Southwest. She is often compared to the legendary mid-Twentieth-Century French singer and icon **Edith Piaf**. Her own original songs draw on all these traditions, and have been covered by such great folk artists as **Rosalie Sorrels**, **Chuck Pyle**, **Jody Stecher** and **Kate Brislin**, and the late **Dave Van Ronk**. Many of her songs, with their

well-crafted lyrics and flowing, singable melodies, have the ring of instant classics.

Since 1976, Jane Voss has performed and recorded with the consummate piano artist **Hoyle Osborne**. Osborne is the perfect match to Voss in the subtlety and authority of his musicianship. His gorgeous, often intricate accompaniments provide a rich setting to embrace her voice and guitar. Hoyle also became known for his solo ragtime piano stints at The Diamond Belle Saloon in Durango, Colo., for many years.

Jane and Hoyle met and formed their partnership in the San Francisco Bay Area. They now live in northwestern New Mexico, and will be our second New Mexican performers of the month, the week following **Steve Cormier** from the Albuquerque area. They have played concerts and festivals across the United States, in Canada, and overseas, and have appeared on the national radio programs *Fresh Air*, *All Things Considered*, *Mountain Stage*, *West Coast Live*, and *World Café*. [www.janevoss.com](http://www.janevoss.com)

At **Glen Echo Town Hall, 6106 Harvard St., Glen Echo, MD 20812. Admission: \$15**

FSGW HOUSE CONCERT

TAKOMA PARK, MD

# STEVE CORMIER

## MUSIC OF THE AMERICAN WEST

### SATURDAY, APRIL 19 • 8 PM

**Steve Cormier** comes to us from New Mexico, where he has been a musician, a cowboy, a film actor, and a college professor. He sings of cowboys and the other colorful characters who made up Western American history and myth. He has learned both from research and from practical experience with the ranch-hand's craft—how to throw a lariat, how to brand a calf, and how to use songs and stories to deal with the boredom that's the bulk of a cowboy's life.

His songs and stories are about real people and real situations, much of the time. He'll like as not open with a set of pre-WWII cowboy work music. His sources range from **Woody Guthrie** to **Powder River Jack Lee**. He sings about farmers, cowboys, factory workers, horses, and homes on the range. Steve's concerts

provide an insight into people and a way of life that is far removed from the reality of most of us. Steve is now the official cowboy singer for the New Mexico Humanities Council Chautauqua touring program. And he has a new album out: *Este Mundo*.

Join us in the front parlor of Kathie Mack's Craftsman bungalow. It may be only three blocks from the Takoma Metro station on the Red Line, but expect to spend most of the night with your mind transported to the American West.

Suggested donation: \$15; all proceeds to the performer. For reservations or driving or Metro directions, call **Kathie Mack at 301.270.5367** or e-mail her at [kpmack2@gmail.com](mailto:kpmack2@gmail.com).



# FSGW Sunday Night Dances

at Glen Echo Park, MD

**Contras & Squares • 7:30–10:30 pm**

Introductory lesson every Sunday, 7–7:30 pm

Join us for an evening of dancing at Glen Echo Park. Every Sunday FSGW (in cooperation with the National Park Service, Montgomery County, and the Glen Echo Park Partnership for Arts and Culture) presents contras and squares danced to live music by fabulous bands with entertaining callers. Experienced and new dancers welcome; no partner needed. ***Welcome/Orientation session every Sunday at 7. Come early for an introduction to the basic moves.*** Dances often become more challenging as the evening progresses. During the spring and summer, most Sunday dances are in the Bumper Car Pavilion, then move into the 1920s restored Spanish Ballroom in the fall and winter. Bring water or a sports drink, and dress in layers. Smooth-soled shoes are kindest on your knees and ankles when turning. Info: **Steve Burnett**, [dance@fsgw.org](mailto:dance@fsgw.org)

**ADMISSION: \$10 FOR FSGW, BFMS, CDSS, AND ATDS MEMBERS,  
\$5 AGES 7–22 (WITH STUDENT ID IF OVER 17)  
\$13 FOR THE GENERAL PUBLIC.**

## April

- 6 Mary Wesley and Sassafras Stomp**—Mary brings a taste of Vermont to the Spanish Ballroom tonight. **Johanna Davis** (vocals, fiddle, banjo), **Adam Nordell** (guitar, vocals, foot percussion, banjo) and **Putnam Smith** (vocals, banjo, mandolin) will provide high-energy Celtic and old-time foot-stompin' tunes.



- 13 April Blum with Hot Point String Band**—FSGW's president calls to music by **Mark "Pokey" Hellenberg** (percussion and banjo uke), **Hilarie Burhans** (clawhammer banjo), **Mark Burhans** (fiddle), **Marlene Shostak** (piano) and **Nick Weiland** (bass). They bring a contemporary midwestern flair to contradance.



- 20 Janine Smith with Anadama**—From New England, **Amelia Mason** (fiddle), **Emily Troll** (accordion) and **Bethany Waickman** (guitar) fuse Irish, Quebecois, and New England for dynamic dancing. **Janine Smith** wraps up her three-night series at the Spanish Ballroom.



- 27 Ann Fallon with Triple Helix**—Ann returns from Annapolis to call with **Triple Helix: Colleen Reed** (flute), **Alexander Mitchell** (fiddle, mandolin) and **Keith Gillis** (guitar).



*FSGW sponsors events that are intended to foster a pleasant environment and a tolerant community, and to provide a comfortable experience for all.*



# FSGW English Country Dances

at Glen Echo Town Hall, MD • Wednesdays • 8–10 pm

Dance on a wood floor in the climate-controlled community room of the **Glen Echo Town Hall, 6106 Harvard St., Glen Echo, MD 20812**. Bring clean, non-scutting shoes for dancing. Cheerful, patient, talented callers are accompanied by top-notch musicians—every Wednesday a different and delightful mix of instruments, including piano, fiddle, flute, harp, oboe, concertina, bassoon, cello, viola, and recorder. Light refreshments served at the break. Experienced and new dancers welcome. No partner required. **Info: Stephanie Smith at 301.229.3577 or Roger Broseus at [English@fsgw.org](mailto:English@fsgw.org)**

**Admission: \$8 for FSGW members, \$10 for non-members.**

## April



**2 Liz Donaldson** leads the dancing to the playing of **Becky Ross** (fiddle), **Karin Loya** (cello), and **Francine Krasowska** (piano).

**9 Rich Galloway** calls while **David Knight** (fiddle), **Dan Gillespie** (recorders), and **Melissa Running** (piano) play the tunes.



**16 Carol Marsh** calls to the music of **Chelle Fulk** (fiddle), **Anna Rain** (recorders), and **Ralph Gordon** (cello).

**23 Martha Siegel** leads the dances while **Colleen Reed** (flute), **Bruce Edwards** (bassoon and concertina), and **Liz Donaldson** (piano) play.

**30 Tom Spilsbury** calls while **Carrie Rose** (flute), **Karen Ashbrook** (hammered dulcimer), and **Paul Oorts** (mandolin, accordion, and guitar) play the music.



## Chesapeake Dance Weekend continued from front page.



danceable **Hotpoint Stringband**. Renowned callers **Will Mentor** and **Bob Isaacs** will offer exciting workshops. Will will defy expectations with his “Unsquare Squares” sequence. For fans of dance geometry, Bob will also offer a creative workshop of perfectly paired “twin dances.”

Beyond squares and contras, **Jim Morrison** will join local Irish musicians **Sean McComiskey** and **Josh Dukes** in leading Kerry and Cork sets. With three separate set workshops for dancers to participate in, you’ll more than just get your feet wet. Plus, who knows what kind of late-night dancing might happen late on Saturday night?

Outside of dancing, the talented music staff will lead a number of band and instrumental workshops. Both mornings will feature opportunities for singers, including the ever-popular gospel sing, led by **Flawn Williams**.

With all of these exciting opportunities, why not sign up for the weekend while you still can? For the full, newly announced schedule and easy instructions for signing up, visit **[www.ChesapeakeDanceWeekend.org](http://www.ChesapeakeDanceWeekend.org)**. See you on the dance floor!



## FSGW Dances & Co-sponsored Dances

### The Family Dance

SUNDAY, APRIL 13 • 3 TO 5 PM

GLEN ECHO SPANISH BALLROOM ANNEX

Usually on a second Sunday, the family dance has been on-going for the past 15 years. A great shared activity for all ages. Check the website for the caller and musicians. fsgw.org. \$5 for ages 4 and older.

### Contra Sonic

THURSDAY, APRIL 17

8 TO 11 PM • SPANISH BALLROOM

Having a TAX-ing month? Take a break and come dance at FSGW's quarterly ContraSonic. The original Contra Sonic

caller returns! **Janine "J9" Smith** calls with **Brian "BHam" Hamshar**. A fu-

sion of modern music and traditional dance that will keep you hopping into the night. Lesson at 7:30, dancing from 8 to 11. \$8, \$6 members. Glen Echo

Park, Glen Echo, MD



### The Great American Square Dance Revival— Part XXIV

SATURDAY, APRIL 26

8:30–11:30 PM

FSGW's DC Square Dance Collective presents another kickin' traditional Appalachian Square Dance. *Run of the Mill String Band*, Clifftop favorites and stalwarts of the Philadelphia old-time music scene, will play the tunes. That's **Palmer Loux** (fiddle), **Greg Loux** (guitar), **Paul Sidlick** (banjo) and **Ralph Gordon** (guest bassist). All are welcome—young and old, brand new and experienced dancers, hipsters and total outta the loopers. No partner, lessons, overalls, or fancy dress needed. Location: Saint Stephen's Church, 1525 Newton St. NW, Washington



DC, near the Columbia Heights Metro. \$5 at the door. More info: visit [www.dcsquaredance.com](http://www.dcsquaredance.com)

### CO-SPONSORED

### Second Thursday Contra Dance in Silver Spring—Free to First-Timers Thursday, April 10 • 7-10 pm

Featuring *Nor'easter!* Will Mentor calling. Beginner lesson from 7–7:30. \$10, \$8 FSGW members and Revels, \$5 students and those without income. Co-presented with Carpe Diem Arts. One Veterans Plaza, Silver Spring, MD. Free parking in public lot across the street, 801 Ellsworth Dr. Info: [busygraham@gmail.com](mailto:busygraham@gmail.com), 301.466.0183.

[www.CarpeDiemArts.org](http://www.CarpeDiemArts.org).



### Glen Echo International Folkdancers • MD THURSDAYS • 7:30–10:45 PM

See page 20.







Founding members John and Ginny Dildine, Nan Perdue (hidden), Sol Schneyer, Chuck Perdue and Helen Schneyer. 1967

# 50th Anniversary Celebration!

## Save the Date for Sunday, Sunday, October 12, 2014

### Spanish Ballroom at Glen Echo Park, MD

October 1964 marked the official founding of this Society, so we are pleased to celebrate that auspicious beginning with an anniversary bash! Plans are just getting underway for this event. If you would be willing to assist with planning, or helping out on that day, please e-mail [50years@fsgw.org](mailto:50years@fsgw.org).



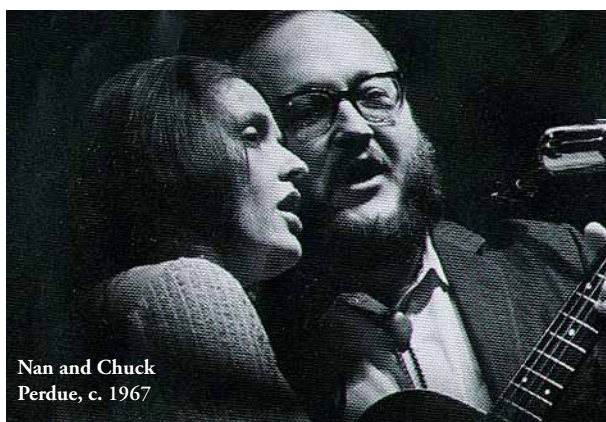
## FSGW HISTORY

BY JULIE McCULLOUGH

© Copyright Julie McCullough 1999

## Birth Of The Folklore Society Of Greater Washington: Fall 1964

In August, 1964, FSGW was “conceived” at a chance meeting at the Maryland House Restaurant—a rest stop on Route 95. **Chuck and Nan Perdue**, and Washington-area newcomers **Lani and Cal Herrmann**, were driving



Nan and Chuck Perdue, c. 1967

home from the Philadelphia Folk Festival. Filled with post-festival enthusiasm, the two families ran into one another at the restaurant and got to talking. “Why don’t we start a D.C.-area folk-music club like the Philadelphia Folk Song Society?” D.C. folkies had been discussing this possibility for several years by 1964, but this conversation actually bore fruit.

Upon returning home, the **Perdues**—who had lived in Northern Virginia since 1960—started telephoning **John and Ginny Dildine**,



Lani Herrmann, c. 2009

**Helen and Sol Schneyer, Joe Hickerson, Gerry Parsons, Andy Wallace, Mike Rivers, Jonathan Eberhart, Dick Rodgers**, and other local folk-music friends. A few weeks later, two dozen people gathered at the **Perdues’** home to discuss ideas. (**Joe Hickerson** claims that, contrary to popular opinion, that first meeting was NOT held in a basement; the **Perdues** did not have a basement!) Meanwhile, **Lani** gathered information from other folksong and folklore societies and compiled what became the basis for FSGW’s original bylaws. They chose a name—the long and unwieldy “Folklore Society of Greater Washington,” which we still use today—and adopted bylaws. FSGW held its first public meeting (“WON’T YOU JOIN US? The Folklore Society of Greater Washington is being formed by a group of local people who feel that folk music is an important part of our culture”) on October 23, 1964, at Fairfax Unitarian Church. They elected FSGW’s first slate of officers and collected charter memberships (\$5 for individuals, \$7.50 for families). FSGW was in business!



Joe Hickerson, c. 1967

Continued on page 26.





**May 23-25, 2014**

*Master Classes • Workshops • Concerts  
Coaching • Jamming • Singing • Dancing  
For all instruments and skill levels*



**Featuring Bruce Molsky**  
Hosted by Simple Gifts

*Plus*

**Orrin Star • The Hot Seats • Ira Gitlin  
Dede Wyland • Wendi Bourne  
Yann Falquet & Pascal Gemme  
Laura Cortese & Mariel Vandersteel  
and many more**

8 Master Classes including:

**Old Time Fiddle with Bruce Molsky  
Flatpicking Guitar with Orrin Star**

*155 miles from DC!*

*A fun & friendly weekend of Folk Music  
Nestled in the beautiful Allegheny Mountains  
of Central Pennsylvania in Huntingdon  
at Juniata College*

Huntingdon County Arts Council • 814-643-6220

**www.folkcollege.com**

# 34th Annual Washington Folk Festival, Saturday & Sunday, May 31 & June 1 **CALL FOR VOLUNTEERS**

For over three decades the Folklore Society has produced the Washington Folk Festival at historic Glen Echo Park. This free, rain-or-shine event is a celebration of the many cultural traditions that are a part of our Greater Washington community. Over the past few seasons the Festival has presented familiar American folk traditions, as well as music and dance from India, Mongolia, North Africa, Ireland, Scotland, France, Israel, Brazil, Bulgaria, Guatemala, Iran, Turkey, Japan, and Spain, to name a few, all performed by folks who live in our area. This year the Festival will again provide a rich smorgasbord of international culture along with American blues, bluegrass, old-time string bands, contemporary singer-songwriters, gospel, western swing, storytellers, craft demonstrations and more. The Festival runs from noon to 7 pm, both Saturday and Sunday. With seven performance areas running simultaneously and over 85 hours of performances, there is something for everyone at the Washington Folk Festival. Note that this year's Festival starts Saturday, May 31, as Memorial Day comes early in May.

In order to produce this Festival, FSGW relies on an army of volunteers. Many have volunteered for decades, but new volunteers are needed each year. A few hours of your time can help make the Festival possible.

To volunteer: Go to **www.washingtonfolkfestival.org** and fill out an on-line volunteer form. The Festival is particularly looking for people who would like to get more deeply involved in the planning and management of the event. These include volunteer coordination, publicity, web-page design, database management, fund raising, food preparation, sound engineering, and general Festival management. If you have experience, or would like to develop skills in any of these areas, we would love to hear from you. If you are interested in exploring a staff role, please send an e-mail to **dwainfest@aol.com** or call **Dwain Winters** at **301.526.8558**.



## Apply Now for the Takoma Park Folk Festival

The 37th Takoma Park Folk Festival will be held on **Sunday, September 7, 2014**. Information about the Festival is at [www.tpff.org](http://www.tpff.org), where performers, craft artists, and volunteers can find application forms. The application deadline for performers is **April 18**.

## Concerts

### WEEKEND BLUEGRASS CONCERT SERIES

#### HERNDON, VA

Holy Cross Lutheran Church, 1090 Sterling Rd., \$15. Info: **Bob Thompson**, 703.435.8377 or [kd4fue2@verizon.net](mailto:kd4fue2@verizon.net)

#### DRY BRANCH FIRE SQUAD SUNDAY, APRIL 6 • 3 PM

The very best in traditional bluegrass music "on the ragged edge" with all the emotion intended by each song writer plainly evident plus a good dose of ingratiating humor.

#### JOE MULLINS AND THE RADIO RAMBLERS FRIDAY, APRIL 11 • 8–10 PM

Traditional bluegrass music at its very best with soaring vocal harmony and superlative work on wood and strings.

#### BILL EMERSON AND SWEET DIXIE SATURDAY, APRIL 26 • 7:30–9:30 PM

*Bill Emerson and Sweet Dixie* mix traditional and contemporary bluegrass seamlessly. Bill is a master banjoist and a founding member of *The Country Gentlemen* as well as the creator of the Navy band known as *Country Current*.

#### HARPETH RISING • NW WASHINGTON, DC SATURDAY, APRIL 12 • 7:30 PM

Original songs that layer lush instrumental arrangements and powerful lyrics. Their harmonies run the gamut from traditional Bluegrass to full-on Gregorian organum. [www.harpethrising.com](http://www.harpethrising.com) \$15. Seekers Church, 276 Carroll St. [www.imtfolk.org](http://www.imtfolk.org)

#### HICKORY WIND REUNION CONCERT COMMUNITY COFFEEHOUSE CONCERT AT BABCOCK • TOWSON, MD SATURDAY, MAY 3 • 7:30–10:30 PM

*Hickory Wind* played and recorded to critical acclaim from 1973 until 1978, touring and sharing the stage with such luminaries as Doc Watson, John Prine, John Hartford, *Nitty Gritty Dirt Band*, and Bonnie Raitt and releasing two highly regarded albums, *At the Midnight Waltz*,

and *Fresh Produce*. \$10 students with ID, otherwise \$15 to \$20. Babcock Presbyterian Church, 8240 Loch Raven Blvd. 21286. Info: **Alan Byer**, 410.812.0972

#### JOE NEWBERRY HOUSE CONCERT SPRINGFIELD, VA SATURDAY, MAY 3 • 7:30 PM

A frequent guest on Garrison Keillor's *A Prairie Home Companion*, Joe also performs in a duo with **Mike Compton**, and plays with **Bruce Molsky**, **Rafe Stefanini**, and **Mike Compton**, as the *Jumpsteady Boys*. *The Gibson Brothers'* version of his song *Singing As We Rise*, with **Ricky Skaggs**, won the 2012 IBMA "Gospel Recorded Performance" award. <http://joenewberry.me/wordpress/> \$20 Space limited, RSVP: **Lisa**, [littlelizajane@cox.net](mailto:littlelizajane@cox.net) or 571.201.4711

#### BIRCHMERE CONCERT HALL

3701 Mt. Vernon Ave., Alexandria VA 22305; all shows begin at 7:30 pm; [www.birchmere.com](http://www.birchmere.com)

#### April

- 2 **Hugh Masakela**, So. African trumpet legend's 75<sup>th</sup> birthday celebration; \$45
- 5 **Tom Rush**, folk legend; \$39.50
- 11 **Iris Dement**, rootsy songwriter; \$39.50
- 27 Bluegrass Allstar Jam, incl. **Dale Ann Bradley** + **Steve Gulley** + **Missy Raines** + **Sammy Shelor** + **Michael Cleveland**; \$29.50
- 29 *The Milk Carton Kids*, indie-folk duo; \$20



#### THE BARNs AT WOLF TRAP

1635 Trap Rd., Vienna, VA 22182, [www.wolftrap.org](http://www.wolftrap.org)


#### April

- 21 *The Milk Carton Kids*, indie-folk duo; \$25; 8 pm
- 24 **John McCutcheon**, folk legend; \$25-27; 8 pm
- 25 Hawaiian Slack Key Guitar Festival, incl **Dennis Kamakahi**, **LT Smooth**, **Paul Togioka**; \$25-30; 8 pm
- 26 **Tom Paxton**, legendary singer, songwriter; \$24-28; 7:30 pm



SUNDAY	MONDAY	TUESDAY	WEDNESDAY
<div>April</div>			
		<div>1</div> <p>7pm Chevy Chase Israeli Dance 7:15 Reston/Herndon Folk Club 8 Greenbelt Scottish Country Dance 8 Sea Chanteys—Wheaton</p> 	<div>2</div> <p>7pm Arlington Jam 7:30 Baltimore Singers Club 7:45 Rock Creek Morris Women 8 <b>FSGW ENGLISH COUNTRY DANCE</b> 8 Baltimore Contra Dance 8 Alexandria Scottish Country Dance 8 Columbia Int'l Folk Dance</p>
<div>6</div> <p>10am Annapolis Jam 11 DCBU Bluegrass Jam 2pm Wheaton Scottish Jam 2:45 Glen Echo Waltz 3 Herndon Bluegrass Dry Branch Fire Squad 4 Alpine Dancers 7:30 <b>FSGW CONTRA DANCE</b> <b>MARY WESLEY CALLS TO SASSAFRAS STOMP</b> Potomac River Sacred Harp Singing Convention</p>	<div>7</div> <p>7pm DC Bluegrass Jam 7:30 Bethesda Int'l Folk Dance 7:30 Arlington Morris Women 8 Baltimore English Country Dance 8 Bethesda Scottish Country Dance 8 Balkan Singing</p>	<div>8</div> <p>7pm Chevy Chase Israeli Dance 7:15 Reston/Herndon Folk Club 7:30 IMT Rockville—Sean Tyrell 8 Greenbelt Scottish Country Dance 8 <b>FSGW BOARD MEETING</b></p>	<div>9</div> <p>7:45pm Rock Creek Morris Women 8 <b>FSGW ENGLISH COUNTRY DANCE</b> 8 Baltimore Contra Dance 8 Alexandria Scottish Country Dance 8 Columbia Int'l Folk Dance 8 Sea Chanteys—Baltimore</p>
<div>13</div> <p>10am Annapolis Jam 2pm Arlington CABOMA Jam 3 <b>FSGW FAMILY DANCE</b> 3 Glen Echo Tea Dance 4 <b>FSGW GOSPEL SING</b> 7 Focus Alexandria—David Mallett 7 WFMA Showcase, Silver Spring 7:30 <b>FSGW CONTRA DANCE</b> <b>APRIL BLUM CALLS TO HOTPOINT STRINGBAND</b> <i>Chesapeake Dance Weekend</i></p>	<div>14</div> <p><b>First Night of Passover</b> 7:30pm Bethesda Int'l Folk Dance 7:30 Arlington Morris Women 8 Baltimore English Country Dance 8 Bethesda Scottish Country Dance 8 Balkan Singing</p> 	<div>15</div> <p>7pm Chevy Chase Israeli Dance 7 DC Sacred Harp Singing 7:15 Reston/Herndon Folk Club 8 Greenbelt Scottish Country Dance 8 Focus Rockville—Roy Zimmerman</p>	<div>16</div> <p>7pm Arlington Jam 7:45 Rock Creek Morris Women 8 <b>FSGW ENGLISH COUNTRY DANCE</b> 8 Columbia Int'l Folk Dance 8 Alexandria Scottish Country Dance 8 Sea Chanteys—Annapolis</p>
<div>20</div> <p><b>Easter Sunday</b> 10am Annapolis Jam 2:45pm Glen Echo Waltz 4 Sandy Spring Sacred Harp Singing 7:30 <b>FSGW CONTRA DANCE</b> <b>JANINE SMITH CALLS TO ANADAMA</b></p> 	<div>21</div> <p>7 DC Bluegrass Jam 7:30 Bethesda Int'l Folk Dance 7:30 Arlington Morris Women 7:30 IMT -Old Buck 8 Baltimore English Country Dance 8 Bethesda Scottish Country Dance 8 Balkan Singing</p>	<div>22</div> <p><b>Last Night of Passover</b> 7pm Chevy Chase Israeli Dance 7:15 Reston/Herndon Folk Club, Grace Pettis 8 Greenbelt Scottish Country Dance</p> 	<div>23</div> <p>7pm Cajun Jam—Greenbelt 7:45 Rock Creek Morris Women 8 <b>FSGW ENGLISH COUNTRY DANCE</b> 8 Sea Chanteys—D.C. 8 Baltimore Contra Dance 8 Columbia Int'l Folk Dance 8 Alexandria Scottish Country Dance</p>
<div>27</div> <p>10 am Annapolis Jam 1 PM <b>FSGW FOODLORE COOKING CLASS</b> <b>CHOCOLATE, MORNING, NOON AND NIGHT</b> 2 CABOMA Jam 3 <b>FSGW HOUSE CONCERT:</b> <b>ALICE GERRARD &amp; BEVERLY SMITH</b> 3 Glen Echo Tea Dance 4 <b>FSGW SHAPE NOTE SINGING</b> 4:30 Alpine Dancers 7:30 <b>FSGW CONTRA DANCE</b> <b>ANN FALLON CALLS TO TRIPLE HELIX</b></p>	<div>28</div> <p>7:30pm Bethesda Int'l Folk Dance 7:30 Arlington Morris Women 8 Baltimore English Country Dance 8 Bethesda Scottish Country Dance 8 Balkan Singing</p>	<div>29</div> <p>7pm Chevy Chase Israeli Dance 7:15 Reston/Herndon Folk Club 8 Greenbelt Scottish Country Dance 8 Focus Rockville—<i>Spuytten Duyvil</i></p>	<div>30</div> <p>7:45pm Rock Creek Morris Women 8 <b>FSGW ENGLISH COUNTRY DANCE</b> 8 Baltimore Contra Dance 8 Columbia Int'l Folk Dance 8 Alexandria Scottish Country Dance</p>



THURSDAY	FRIDAY	SATURDAY
3 7pm Silver Spring—Live Blues 7 Frederick Irish/Bluegrass Jam 7:30 Glen Echo Int'l Dance 7:30 Arlington Circle Dance 8 Mt. Vernon Int'l Folk Dance 8 Foggy Bottom Morris Men 8 Baldwin Station, Dan Navarro 9 Glen Echo Slow Blues Dance	4 6pm Kingstowne Bluegrass Jam— Alexandria 8 Common Ground, Balt., Josh Hisle 8:30 Greenbelt Cajun Dance 8:30 Friday Night Contra Dance 8:30 Greenbelt Int'l Folk Dance 8:30 FSGW OPEN SING	5 1 pm Archie Edwards Blues Jam 4 Berryville Shape Note Singing 7 FSGW STORYSWAP, COLUMBIA, MD 8 FSGW CONCERT: GINNY HAWKER & TRACY SCHWARTZ 8 Shepherdstown Contra 8 Common Ground, Westminster, Shelly Ensor  Potomac River Sacred Harp Singing Convention
10 7pm Arlington Jam 7 FSGW SILVER SPRING DANCE 7 Folk Hoot! —Mt. Rainier 7 Frederick Irish/Bluegrass Jam 7 Silver Spring—Live Blues 7 Baltimore Shape Note Singing 7:30 Glen Echo Int'l Dance 7:30 Arlington Circle Dance 8 Mt. Vernon Int'l Folk Dance 8 Foggy Bottom Morris Men 9 Glen Echo Slow Blues Dance	11 7:30 Carroll Cafe— Wiggins, Gilmore, Byrd 8 Harrisburg Contra Dance 8 Herndon—Joe Mullins and the Radio Ramblers 8:30 Friday Night Contra Dance 8:30 Greenbelt Int'l Folk Dance   Chesapeake Dance Weekend	12 1 pm Archie Edwards Blues Jam 8 Baltimore Contra Dance 8 Silver Spring English Dance 8 Lancaster, PA Contra Dance   Chesapeake Dance Weekend
17 7pm Silver Spring—Live Blues 7 Frederick Irish/Bluegrass Jam 7:30 Glen Echo Int'l Dance 7:30 Arlington Circle Dance 8 Wheaton Folk-Song Sing In 8 Mt. Vernon Int'l Dance 8 Foggy Bottom Morris Men 8 FSGW CONTRASONIC 9 Glen Echo Slow Blues Dance	18 6pm Kingstowne Bluegrass Jam— Alexandria 8:30 Friday Night Contra Dance 8:30 Greenbelt Int'l Folk Dance	19 1 pm Archie Edwards Blues Jam 7 Annapolis Contra Dance 7 Greenbelt Scandinavian Dance 7 Sandinavian Dance 8 FSGW HOUSE CONCERT: STEVE CROMIER 8 Bluemont Dance
24 7pm Baltimore Shape Note Singing 7 Frederick Irish/Bluegrass Jam 7:30 Glen Echo Int'l Dance 7:30 Arlington Circle Dance 8 FSGW CONCERT: JANE VOSS & HOYLE OSBORNE 8 Mt. Vernon Int'l Folk Dance 8 Foggy Bottom Morris Men 9 Glen Echo Slow Blues Dance	25 7:30pm 333 Coffeehouse— Steve Gillette & Cindy Mangsen 8 Harrisburg, PA Contra Dance 8:30 Friday Night Contra Dance 8:30 Greenbelt Int'l Folk Dance	26 1pm FSGW TASTE & TELL 1 pm Archie Edwards Blues Jam 1:30 Hammered Dulcimer Jam 7:30 Herndon—Bill Emerson and Sweet Dixie 7:30 Leesburg Assembly English Dance in Great Falls 8 Frederick Contra Dance 8 Greenbelt Israeli Dance Party 8:30 FSGW GREAT AMERICAN SQUARE DANCE

2014

## FSGW Advance Notice

### 2014 FSGW 50TH ANNIVERSARY

Saturday, May 3 • 8 pm

ALIX DOBKIN  
House Concert  
Adelphi, MD

Saturday, May 17

28TH ANNUAL

WASHINGTON

SPRING BALL

Cherry Hill RV Park Conference  
Center (College Park, MD)

Saturday, May 31 &

Sunday, June 1,

34TH ANNUAL

WASHINGTON

FOLK FESTIVAL

GLEN ECHO PARK, MD

Friday, September 26 to

Monday, September 29

50TH ANNUAL

FSGW GETAWAY

West River Conference Center  
West River, MD

Sunday, October 12

FSGW 50TH

ANNIVERSARY

CELEBRATION

SPANISH BALLROOM  
GLEN ECHO PARK, MD



## CONCERTS continued

### THE HAMILTON - NW WASHINGTON, DC

600 14th St. (14th & F) 20005; show times vary.

#### April

- 12 *Dirty Dozen Brass Band*, New Orleans music; \$25-30; 8:30 pm  
17 *Horse Feathers*, acoustic band; \$15-18; 7:30 pm  
20 *Gospel Persuaders*, gospel brunch, \$37-46.50; 10:30am, 1pm, 3:30 pm

#### Sundays

### FOCUS ALEXANDRIA • ALEXANDRIA, VA

2280 N. Beauregard St., 22311, 7 pm, \$15 advance/ members, \$18 door. Info: 703.380.3151, [herb@focusmusic.org](mailto:herb@focusmusic.org) or [www.focusmusic.org](http://www.focusmusic.org)

April 13 David Mallett plus Thomas Gunn

### WFMA SHOWCASE • SILVER SPRING, MD SECOND SUNDAYS • 7 PM

April 13— *Side by Side, Chatham Street and Lilt. Side by Side* (Doris and Sean McGhee) alternating months as houseband with guest performers. Folk/acoustic at El Golfo Restaurant. 8739 Flower Ave., \$10 members, \$15 non at door. Reservations: 301.608.2121. Interested performers/Info: [Doris.Justis@wfma.net](mailto:Doris.Justis@wfma.net).

#### Mondays

### IMT • ROCKVILLE, MD MONDAYS • 7:30 PM

Saint Mark Presbyterian Church, 10701 Old Georgetown Road, 20852. Info: visit [www.imtfolk.org](http://www.imtfolk.org) and call 301.960.3655 for advance ticket sales.

#### April

#### Special Tuesday Event

- 8 **Seán Tyrrell** Roots magazine says, "a lover of language, of poetry, of words strung together in webs that capture moments and places." [www.seantyrrell.com](http://www.seantyrrell.com) Tickets \$22/\$25, student with ID \$19/\$22.  
21 *Old Buck*: all-star string band **Riley Baugus**, **Debra Clifford**, **Sabra Guzmán**, and **Emily Schaad**, layered arrangements, and influences from punk to vintage Americana to gospel. [oldbuckmusic.com](http://oldbuckmusic.com) Tickets \$25/\$29 door, student with ID \$21/ \$25.

**LISA NULL** is accepting a few new voice students: basic vocal techniques, coaching in traditional styles. Downtown Silver Spring. FREE mutual interview! [enul@starpower.net](mailto:enul@starpower.net) or 301.587.2286

PAID ADVERTISEMENT

#### Tuesdays

### FOCUS ROCKVILLE • ROCKVILLE, MD TUESDAYS • 8 PM

Shows are now at Ted's 355 Diner, 895 Rockville Pike, 20852. Emceed by **David Spitzer**. [www.focusmusic.org](http://www.focusmusic.org), 301.340.0088

#### April

- 15 **Roy Zimmerman**, satirical, topical  
29 *Spuyten Duyvil*, high-energy, juggy, string band



### FOLK CLUB OF RESTON- HERNDON • HERNDON, VA TUESDAYS • 7:15 PM

April 22—**Grace Pettis**. Open mics on other weeks. [www.restonherndonfolkclub.com](http://www.restonherndonfolkclub.com) Tickets: [DAHurdSr@cs.com](mailto:DAHurdSr@cs.com); \$11 members, \$12 non-members; Amphora Diner Deluxe, Doors open at 6. 1151 Elden St, 20170

#### Thursdays

### BALDWIN'S STATION • SYKESVILLE, MD THURSDAYS • 8 PM (USUALLY, NOT ALWAYS)

7618 Main St, Sykesville, MD. Accessible to people with disabilities. Info: 410.795.1041, [www.uptownconcerts.com](http://www.uptownconcerts.com), or [uptownconcerts@gmail.com](mailto:uptownconcerts@gmail.com)

#### April

- 3 **Dan Navarro**, singer-songwriter, \$25  
17 **Eric Scott**, great vocalist, an acoustic show, \$15

### LIVE BLUES SERIES • SILVER SPRING, MD THURSDAYS • 7-9 PM

Live Acoustic Blues at El Golfo Restaurant, 8739 Flower Ave., 20901. Cover \$5 includes a free drink. Please check the website or e-mail for info. [Takomadave@gmail.com](mailto:Takomadave@gmail.com), [www.elgolforestaurant.com](http://www.elgolforestaurant.com)

#### Fridays

### CARROLL CAFE • WASHINGTON, DC FRIDAY, APRIL 11 • 7:30 PM

**Phil Wiggins**, **Lea Gilmore**, and **Eric Byrd**—Blues x 3! **Karen Mohr** opens. World-class blues harmonica, blues and gospel singing, and a blues, jazz, and gospel pianist. Carroll Cafe@Seekers Church, 276 Carroll St. NW, Washington D.C. \$16 advance, \$20 door. Info: **Jesse Palidofsky** 301.562.4147 [www.carrollcafe.org](http://www.carrollcafe.org); [jesse-toons@aol.com](mailto:jesse-toons@aol.com)

### 333 COFFEEHOUSE • ANNAPOLIS, MD THIRD FRIDAYS • 7:30 PM

4<sup>th</sup> Friday this month. The Annapolis Friends Meeting House, 351 DuBois Rd, off Bestgate Ave. Acoustic music. Dessert and coffee available in this smoke- and alcohol-free environment. \$12, \$10 for seniors/students/affiliates. Info: **443.333.9613** or **fsgw.org/333**

**April 25—Steve Gillette and Cindy Mangsen**, legendary folk duo

### CELLAR STAGE • BALTIMORE, MD FRIDAYS • 8 PM

Faith Community United Methodist Church of Hamilton, 5315 Harford Rd., 21214, **410.521.9099**, **uptown-concerts.com**

**April**

- 11 Billy Jonas Band**—family-friendly fun, adults \$21, under 12 \$11, babes in arms free
- 25 Jory Nash**—singer-songwriter, \$20

**COMMON GROUND ON THE HILL • BALTIMORE, MD**  
Brown Memorial Woodbrook Presbyterian Church, 6200 North Charles St., 21212. Admission \$25, \$22 seniors, students with ID, 19 and under. 8 pm, doors open at 7:30. Info: **410.857.2771**, **www.commongroundonthehill.org**

**April 4—Josh Hisle**, award-winning singer-songwriter and activist Iraq veteran.

*Saturdays*

### COMMON GROUND ON THE HILL WESTMINSTER, MD

Carroll Arts Center, 91 West Main St., 21157, 8 pm, \$25/22 seniors, students with ID, 19 or under. Info: **410.857.2771**, **www.commongroundonthehill.org**

**April 5—Shelly Ensor**, back by popular demand, powerful vocals, esteemed Gospel song leader

## Classes

### SCANDINAVIAN DANCE CLASSES • BETHESDA, MD TUESDAYS, APRIL 8, 15 & 29 • 7:30–9:30 PM

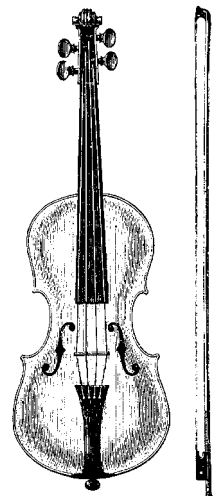
All levels welcome. Beginners learn Hambo, Schottish, Waltz, Zwiefacher, and other couple turning dances. Advanced dancers learn Boda, Orsa, Föllinge, Finnskogspols, Viksta, Gammalvånster, Telespringar, Valdrespringar, and requests. Sometimes live music. Wear smooth-soled shoes for turning, not running shoes. \$5, first time free. Info: Lisa Brooks at **240.731.1935**, **lisa@HamboDC.org**, or **www.HamboDC.org**.

**Directions:** Enter NIH at Wisconsin Av. and the new Gateway Drive Visitor Entrance (south of South Dr., reachable ONLY from the north on Wisconsin Av.). Park there, or drive to the south center of NIH and park in NIH permit parking next to Building T-39. Or walk 12 minutes from the Medical Center metro stop. See map at **www.HamboDC.org**.

### FIDDLE CLASS POTOMAC VALLEY SCOTTISH FIDDLE CLUB

*Please check the website for details and updates.*

Scottish tunes learned by ear, then some learned with music, followed by a pot-luck and jam session. Occurs monthly; for the location and teacher, check **www.potomacvalleyscottishfiddle.org** For additional info, contact info, contact **BeckyRoss@PeatAndBarley.com**, or **301.208.8285**.



## FSGW Newsletter Editorial and Advertising Policy

The Folklore Society of Greater Washington endeavors to print copy it deems relevant to its membership and purpose as stated in its by-laws:

*“The main purpose of the Society is to further the understanding, investigation, appreciation, and performance of the traditional folk music and folklore of the American people.”*

- All copy (except ads) must be submitted by e-mail to **publications@fsgw.org** in text format in the body of the e-mail by the 10th of the preceding month.
- All listings must be submitted in the format found on our website, **fsgw.org**. Click on the newsletter tab and scroll down to the paragraph in green lettering.
- The Editor reserves the right to edit or omit copy as necessary. Ad content must be approved by the editor.

Basic Ad charges: 1/4 page ads (3.4" x 4.5" or 7.25" x 2.5"): \$65 for one month, \$120 for two. Commercial business: \$8 for 10 words. Non-commercial and individual: \$4 for 10 words. 25% discount for any single ad placed in 11 consecutive issues (one year) and paid in advance. We will work with you on larger ads. Copy, with check made payable to FSGW, must be received by the newsletter deadline. Mail to the Editor: **Roxanne Watts, 3576 Briar Hill Lane, Delaplane, VA 20144..**

**Editor:** Roxanne Watts • **newsletter@fsgw.org** • 703-618-1799

**Design & Layout:** Jennifer Woods GRAPHICS • Silver Spring, MD • 301-587-7174



# Dances

## COMMUNITY/FAMILY

### FSGW Family Dance See details on page 10.

#### GALESVILLE POTLUCK/SQUARE DANCE • MD SATURDAY, MAY 3 • 6–10 PM

Celebrate Spring, our Annual May Day Dance, complete with Maypole Dances! Traditional Appalachian dance tunes with live music by **Leah Weiss** (fiddle), **Gary Wright** (guitar), and Friends. Sit-ins welcome on fiddle, guitar, and clawhammer banjo. **Janine Smith** calls squares, circles, and longway sets. All ages welcome. Potluck at 6, family dancing at 7, more challenging dancing from 8:30 to 10. Adults \$10, ages 5 to 17, \$5, under 5, free. Galesville Memorial Hall, 952 Galesville Road, <http://communitysqaredance.wordpress.com/>, info: 301.926.9142

## CONTRA

### Sundays

#### The FSGW Sunday Night Dances are listed on page 8.

### Wednesdays



#### BALTIMORE FOLK MUSIC SOCIETY • MD WEDNESDAYS • 8–10:30 PM

Beginners are always welcome. New-dancer workshops to be held at 7:30 on the 2nd and 4th Wednesdays. Nationally-known musicians and callers appear regularly. Members \$9; non-members \$13; member/non-member students with ID \$4/\$6. Lovely Lane Church, 2200 St. Paul St., 21218. [www.bfms.org](http://www.bfms.org)

### April

- 2 **Mary Wesley** calls to *Sassafras Stomp*—**Johanna Davis** (fiddle, banjo), **Adam Nordell** (guitar, feet, banjo), and **Putnam Smith** (banjo, mandolin).
- 9 **Kristin Seibert** calls to *New Hip Trio*—**Joe DeZarn** (fiddle), **Ralph Gordon** (bass), and **Liz Donaldson** (piano).
- 16 No dance—hall not available Holy Week
- 23 **Ann Fallon** calls to *Old Time Jam Band*.

- 30 **Melissa Chatham** calls to *Taylor Among the Devils*—**Steve Hickman** (fiddle), **Marty Taylor** (whistles, concertina), and **Jonathan Jensen** (piano).

### Fridays

#### FRIDAY NIGHT DANCERS • GLEN ECHO PARK, MD FRIDAYS • 8:30–11:30 PM

The Friday Night Dancers (in cooperation with the National Park Service, Montgomery County, and the Glen Echo Park Partnership for Arts and Culture) sponsor weekly contra dances to live music in the historic Glen Echo Spanish Ballroom, 7300 MacArthur Blvd. New-dancer classes at 7:30, \$10 for the lesson and dance. Ages 17 and under \$5. 17 and younger admitted free on the second Friday of the month. Info: [www.fridaynight-dance.org](http://www.fridaynight-dance.org) or call 301.634.2222. On Facebook at Friday Night Dance at Glen Echo Park.

### April

- 4 **Donna Hunt** calls to *Atlantic Crossing* with **Viveka Fox** on fiddle and bodhrán, **Peter Macfarlane** on fiddle and low whistle, **Tristan Henderson** on mandolin and more, **Rick Klein** on guitar.
- 11 **Ridge Kennedy** with the *Glen Echo Open Band*.
- 18 **Janine Smith** calls to *Anadama* with **Amelia Mason** on fiddle, **Emily Troll** on accordion, and **Bethany Waickman** on guitar.
- 25 **Mary Wesley** with *Sibling Ribaldry*.

### Saturdays

#### SHEPHERDSTOWN DANCE • WV 1ST SATURDAYS • 8–11 PM

**April 5**—**Donna Hunt** calls to *Atlantic Crossing*. At the Shepherdstown War Memorial Building. Beginners' workshop, 7:30. All levels welcome, no partner needed. Please wear clean, soft-soled shoes to protect the floor. \$10 adults, \$7 SMD members, \$4 dancers under 12. Potluck snacks at the break. Info: [www.smad.us](http://www.smad.us) or call **Becky** at 304.876.2169

#### ANNAPOLIS CONTRA AND SQUARE DANCE • MD 3RD SATURDAY • 7–10 PM

**April 19**—A night of home-grown fun—our annual FUNdraiser! Traditional American contra and square dances with the amazing music of the *Annapolis All-Starz*. Dances will be taught and called by local callers.

Intro class at 6:30; all dances taught and walked through; all ages welcome. \$10 with discounts for seniors, students, families, and members of Annapolis Traditional Dance Society (ATDS). Snacks to share at the break are welcome! Friends Meeting Hall, 351 DuBois Rd., 21401. Info: **Ann Fallon** at 410.268.0231, [aefallon@verizon.net](mailto:aefallon@verizon.net); [www.contradancers.com/atds](http://www.contradancers.com/atds)

**BLUEMONT DANCE • HILLSBORO, VA  
3RD SATURDAY • 8 PM**

**April 19**—**Gaye Fifer** calls to *Old Pitch*. Lesson at 7:30. \$10, \$7 for Bluemont Friends, students and seniors. At The Hillsboro Old Stone School; 37098 Charles Town Pike. [www.bluemont.org](http://www.bluemont.org). Info: 540.955.8186, or [info@bluemont.org](mailto:info@bluemont.org)

**LANCASTER CONTRA DANCE • PA  
USUALLY 3RD SATURDAY • 7–10 PM**

**April 12**—Note: Second Saturday this month. **Jim Kitch** calls to *The Instant Ensemble*. St. John's Episcopal Church, 321 W. Chestnut St. Beginners workshop 6:15, \$9/\$6. Children 15 and under free. Info: **Karen** 717.951.4317 or [www.lancastercontra.org](http://www.lancastercontra.org)

**FREDERICK CONTRA DANCE • FREDERICK, MD  
4TH SATURDAY • 8–11 PM**

**April 26**—*Sugar Beat* featuring **Elke Baker**, fiddle; **Susan Brandt**, flute; **Marc Glickman**. Caller **Shane Knudsen**.

Bring a snack to share at the break to make it a dance party! Trinity School, near Harry Grove Stadium. Free beginners' workshop at 7. Adults, \$10, students \$5. Info/directions: [www.contradancers.com](http://www.contradancers.com) or call **Boe Walker** at 301.694.6794

———— *ENGLISH COUNTRY* ————



**BALTIMORE FOLK MUSIC SOCIETY  
ENGLISH COUNTRY DANCE  
PIKESVILLE, MD  
MONDAYS • 8–10:30 PM**

English Country Dancing is lively movement to elegant music in a friendly, informal setting. All dances are taught and walked through. New-dancer orientation first Monday at 7:45. Admission \$8 Members, \$11 Non-members, \$2 student discount. St. Mark's on the Hill Parish Hall, 1620 Reisterstown Rd., 21208. Info: **Carl Friedman** at

*Mondays*

410.321.8419 or [engdance@bfms.org](mailto:engdance@bfms.org)

**April**

- 7 **Rich Galloway** calls to *The Geud Band of Baltimore*.
- 14 **Sharon McKinley** calls to **Carl Friedman** (violin), **Wayne Hankin** (winds), and **Liz Donaldson** (piano).
- 21 **Diane Schmit** calls to **Emily Aubrey** (violin), **Marty Taylor** (winds, concertina), and **Judy Meyers** (piano).
- 28 **Mike Franch** calls to **Becky Ross** (violin), **Robin Wilson** (flute, concertina), and **Francine Krasowska** (piano).

*Saturdays*

**ENGLISH COUNTRY DANCE • SILVER SPRING, MD  
SATURDAY, APRIL 12 • 8–10:45 PM**

At Glen Haven Elementary School, 10900 Inwood Ave. (Parking and entrance in rear). Dance to music by *Peascods Gathering*, calling by **Bob Farrall**. Beginners and singles welcome. \$5. Info: **Carl Minkus** 301.493.6281 ([cminkus@verizon.net](mailto:cminkus@verizon.net)), **Bob Farrall** 301.577.5018.

**LEESBURG ASSEMBLY DANCE • GREAT FALLS, VA  
SATURDAY, APRIL 26 • 7:30–10:30 PM**

**Susan Taylor** calls to **Alice Markham** and **Jeff Steinberg**. Beginners and singles welcome! A snack to share at the break would be appreciated. St. Francis Episcopal Church, 9220 Georgetown Pike, 4 miles from the Beltway. \$10. Info: **David Pacelli** at 703.757.8648, or [www.theleesburgassembly.org](http://www.theleesburgassembly.org)

———— *INTERNATIONAL* ————

*Sundays*

**ALPINE DANCERS • NEW CARROLLTON, MD  
SUNDAYS, APRIL 6 & 27 • 4–6:30**

Alpine Dancers are a performing and teaching folk-dance group specializing in graceful and lively dances from Austria, Germany, and Switzerland. Looking for energetic beginners. Free, open practice at New Carrollton Municipal Center, 6016 Princess Garden Pkwy. For info, engagements: [www.alpinedancers.org](http://www.alpinedancers.org), [caroltraxler@yahoo.com](mailto:caroltraxler@yahoo.com) or **Herbert and Carol Traxler**, 301.577.3503.



## DANCES continued

### *Mondays*

#### **BETHESDA INTERNATIONAL FOLK DANCING • MD MONDAYS • 7:30–10 PM**

Come join a very friendly group and learn dances from all over the world. Beginners 7:30–8, Intermed., advanced, 8–10, Mostly request dancing, 9:15–10. No partner needed, all ages and levels welcome. Wood floor, mostly recorded music. Lawton Community Center, 4301 Willow Ln. 20815. Classes here require registration with Montgomery County. Forms available at the class. \$7. Info: **Phyllis** or **Brandon Diamond**, 301.871.8788, [www.diamond-dancecircle.com](http://www.diamond-dancecircle.com), or [diamonddancecircle@comcast.net](mailto:diamonddancecircle@comcast.net)

### *Wednesdays*

#### **COLUMBIA INTERNATIONAL FOLK DANCING • MD WEDNESDAYS • 8–10:30 PM**

Dancing is from 8:30 to 10:30 at Kahler Hall with a class at 8. Cost: \$5, Senior, \$3. Info: **Ethel** at 410.997.1613, or **Ed** at 410.740.2309. [www.columbiafolkdancers.org](http://www.columbiafolkdancers.org)

### *Thursdays*

#### **GLEN ECHO INTERNATIONAL FOLKDANCERS GLEN ECHO, MD THURSDAYS • 7:30–10:45 PM**

Every Thursday at the Church of the Redeemer, 6201 Dunrobbin Dr. (at the intersection of MacArthur Blvd). Lesson at 7:30. Request dances from 9 to 10:45. Mostly recorded music. No partner/experience necessary. Wear comfortable clothing and soft-soled shoes. Co-sponsored by FSGW. \$5. Info: **Jamie** at 301.466.3018 or [dancingplanet@erols.com](mailto:dancingplanet@erols.com).

#### **CIRCLE DANCE • ARLINGTON, VA THURSDAYS • 7:30–9:30 PM**

Come and explore dances from all over the world in a spirit of meditation and joy. All dances are taught. Recorded music. Unitarian Universalist Church of Arlington, Rte 50 at George Mason Dr. Donation requested. Info: **Ann Ulmschneider** at 703-528-5114 or [aulmsch@msn.com](mailto:aulmsch@msn.com).

#### **MOUNT VERNON INTERNATIONAL FOLK DANCING • ALEXANDRIA, VA THURSDAYS • 8–10 PM**

Beginners to advanced—all are welcome! Easy dances 8 to 8:30, followed by requests and advanced instruction. Join our friendly, diverse group on a beautiful dance floor.

No partner necessary. Donation \$4. Mt Vernon Unitarian Church, 1909 Windmill Lane, 22307. Info: **Patricia** at 703.535.3333 or [pdw@patriciadaywilliams.com](mailto:pdw@patriciadaywilliams.com)

### *Fridays*

#### **GREENBELT INTERNATIONAL FOLK DANCING • MD FRIDAYS • 8:30–10:45 PM**

The focus is dance from Eastern Europe and Scandinavia. No partner or experience necessary. Beautiful dance floor. Teaching 8:30 to 9:15, requests 9:15 to 10:45. \$7; \$12 on 1st Fridays (live music). Greenbelt Community Center Dance Studio, 15 Crescent Rd. 20770. Info: **Larry Weiner** at 301.565.0539, [larry@larryweiner.com](mailto:larry@larryweiner.com) or [www.larryweiner.com/FridayDance.htm](http://www.larryweiner.com/FridayDance.htm)

### *Saturdays*

#### **CCÉ CEILI • HERNDON, VA**

**April 12** —Music by the *Bog Wanderers*. Check the website for updates. Lesson at 7. CCE members \$12, non-members \$15; 2739 West Ox Rd., 20171. Info: [cceptomac.org](http://cceptomac.org). or **Sharon Kourz**, 703.631.9179, or [kourpsc@cox.net](mailto:kourpsc@cox.net)

---

### *ISRAELI*

---

#### **ISRAELI DANCING • CHEVY CHASE, MD TUESDAYS • 7–10:15 PM**

Instruction from 7 to 7:45. The group focuses on building a repertoire of both classic and newer Israeli dances in a friendly, welcoming atmosphere. Recorded music. Light refreshments served. Ohr Kodesh Congregation, 8300 Meadowbrook Lane, 20815. \$8/adults, \$6/students. Info: **Mike Fox** at 240.424.0805, [www.markidmike.com](http://www.markidmike.com) or [markidmike@gmail.com](mailto:markidmike@gmail.com)

#### **ISRAELI DANCING • GREENBELT, MD SATURDAY, APRIL 26 • 8–11:15 PM**

Israeli Classic Dance party (dances before 1990). Recorded music, light refreshments. Cost \$8. Greenbelt Community Center, 15 Crescent Rd., 20770. Info: **Ben Hole**, 301.441.8213.

---

### *MORRIS*

---

#### **ARLINGTON NORTHWEST MORRIS • VA MONDAYS • 7:30–9 PM**

Learn and perform the traditional morris dances of Northwest England, which combine simple footwork with pow-



er and precision. We are a welcoming group of women who practice in a great place with a wooden floor (easier on your knees) at the Unitarian Universalist Church of Arlington, Arlington Blvd & George Mason Dr. Info: [suzelise@comcast.net](mailto:suzelise@comcast.net) or [nwdancers@comcast.net](mailto:nwdancers@comcast.net)

**ROCK CREEK MORRIS WOMEN • SILVER SPRING, MD**  
**WEDNESDAYS • 7:45–9:45 PM**

Learn to dance in the ancient English morris tradition, and you'll get all the aerobics you need. Join a strong community that dances, plays, sings, and drinks together. Montgomery Knolls Elementary School, 807 Daleview Dr., 20901. Info: **301.927.6373**, [louiseneu@earthlink.net](mailto:louiseneu@earthlink.net) or [www.uswet.com/RCMW.html](http://www.uswet.com/RCMW.html)

**FOGGY BOTTOM MORRIS MEN • NW, DC**  
**THURSDAYS • 8–10 PM**

Experience the vigorous thrill of the morris and the camaraderie of a morris team! Learn and perform dances from English Cotswold villages, mummers' plays and occasional long-sword dances. We welcome new and slightly used dancers to our practices at Knock on Wood Tap Studio, 6925 Willow St., NW D.C. and/or at the pub afterwards. [squire@fbmm.org](mailto:squire@fbmm.org), Alan Peel at **301.920.1912**, [www.fbmm.org](http://www.fbmm.org)

---

*SCANDINAVIAN*

---

**SCANDINAVIAN DANCE • GREENBELT, MD**  
**SATURDAY, APRIL 19 • 7–10 PM**

*Scandia DC* sponsors a 3rd Saturday dance. This month will feature live fiddle music with **Loretta Kelley**, most accomplished in the U.S. on the hardanger fiddle. Teaching from 7 to 8. Valdres Springar from the Hardanger fiddle region of Norway. There may be some recorded music. Greenbelt Community Center Dance Studio (wood floor) at 15 Crescent Rd.; \$10; Inclement weather call **310.474.0646**. Info: [linda@scandiadc.org](mailto:linda@scandiadc.org), [www.scandiadc.org](http://www.scandiadc.org), **202.333.2826**.

**NORWEGIAN DANCE & POTLUCK**

Norwegian-style house party; mesmerizing live music by **Loretta Kelley**, on the unique Hardanger fiddle (see [HFAA.org](http://HFAA.org)). Addictive dances, some with Swing or Hambo elements. All welcome. Bring clean shoes to wear, food to share, and \$\$ you can spare. Info: <http://MAND.fanitull.org> or Jenny, [pi@xecu.net](mailto:pi@xecu.net), **301.371.4312**.

*SCOTTISH*

*"Sic as ye gie, sic wull ye gie" –*

*(Scottish for: You'll get out of life as much as you put in!)*

See [www.rscds-greaterdc.org](http://www.rscds-greaterdc.org) for all Scottish dance listings.

**SCOTTISH COUNTRY DANCE • BETHESDA, MD**  
**MONDAYS • 8–10 PM**

NIH Building T-39 (Dance and Aerobic Center). \$5. Call/e-mail in advance for directions. Info: **John MacLeod**, **301.622.5945** or [blackolav@cs.com](mailto:blackolav@cs.com)

**SCOTTISH COUNTRY DANCE • GREENBELT, MD**  
**TUESDAYS • 8–10 PM**

Dance all year 'round at the Greenbelt Community Center. \$8. Info: [www.rscds-greaterdc.org](http://www.rscds-greaterdc.org) or Jay Andrews at [andrewj@erols.com](mailto:andrewj@erols.com) or **703.719.0596**

**SCOTTISH COUNTRY DANCE • ALEXANDRIA, VA**  
**WEDNESDAYS • 8–9:45 PM**

Learn Scottish dance at the Durant Center, 1605 Cameron St. 22314. \$5. Info: [lara.bainbridge@gmail.com](mailto:lara.bainbridge@gmail.com) or [elanyi@cox.net](mailto:elanyi@cox.net)

---

*SWING/BLUES*

---

**13TH ANNUAL DCLX WEEKEND**  
**VARIOUS LOCATIONS DC & MD**  
**FRIDAY TO SUNDAY, APRIL 25–27**  
**TIMES VARY**

DC Lindy Exchange is hosting their 13th Annual DCLX Weekend with seven dance events, some going all-night long. For more information on the events and weekend package pricing, e-mail [info@DCLX.org](mailto:info@DCLX.org), or contact **Robert Patch** at **301.674.0080**.

**SLOW BLUES AND SWING • GLEN ECHO, MD**  
**THURSDAYS • 8:15–11:30 PM**

Popular weekly Blues Dance in the "back room." Come early as it is selling out. Beginner lesson from 8:15 to 9. DJ **Mike Marcotte** and guests play incredible blues from 9 to 11:30. \$8 for lesson and dance. Sprung solid-wood floor. 7300 MacArthur Blvd., 20812. Info: **Donna Barker** at **301.634.2231** or [www.CapitalBlues.org](http://www.CapitalBlues.org)



## WALTZ/TEA DANCE

### WALTZING • GLEN ECHO PARK, MD SUNDAY, APRIL 6 & 20 • 2:45–6 PM

In April, dance to the music of *Sugar Beat* and *Destino da Rosa*, respectively. They'll play a lively mix of folk waltzes with a few other couples dances, including Hambo, Swing, Tango, and Polka. Beginner waltz lesson 2:45–3:30, with the last 15 minutes dedicated to a more advanced move. \$10. No partner required. [Info@waltz-timedances.org](mailto:Info@waltz-timedances.org), or 301.634.2222.

## Jams/Open Mics/Audience Participation

### Sundays

#### ANNAPOLIS ACOUSTIC JAM • ANNAPOLIS, MD EVERY SUNDAY • 10 AM–12:30 PM

Indoors at the Visitor Center, Quiet Waters Park. Info: [ken.i.mayer@gmail.com](mailto:ken.i.mayer@gmail.com)

#### DC BLUEGRASS UNION DUPONT CIRCLE JAM 1ST SUNDAYS • 11 AM–2 PM

The Mansion, 2020 O St., NW, DC 20036, Accessible on Metro's Red Line. Venue: <https://www.omansion.com/>. Contact: Mike Marceau, [mikemarceau@juno.com](mailto:mikemarceau@juno.com).

#### CABOMA JAM • ARLINGTON, VA 2ND AND 4TH SUNDAYS • 2 PM

Capitol Area Bluegrass and Old-Time Music Association (CABOMA) holds jams the 2nd and 4th Sundays of each month. Lyon Park Community Center, corner of N. Fillmore and Pershing, 22201. Info: Don at 703.522.1696

#### SACRED HARP SINGING • SANDY SPRING, MD 3RD SUNDAYS • 4–6 PM

Singing is followed by a potluck supper. Contact Dave Green at 301.570.3283, [dgreene@all-systems.com](mailto:dgreene@all-systems.com) to confirm. Location: small schoolhouse behind Community Building, 17801 Meetinghouse Rd, 20860, about 10 miles west of Laurel, MD.

### Monday

#### BALKAN SINGING • TAKOMA PARK, MD EVERY MONDAY • 8 PM

Informal singing group, *Sedenka*, meets in Northwest DC/Takoma Park to sing Balkan village songs. Interested

### HOT SOCIETY DANCES • GLEN ECHO PARK, MD SUNDAYS, APRIL 13 & 27 • 3–6 PM

*Hot Society Orchestra of Washington*, featuring music and dances from the '20s, '30s and '40s. Foxtrot, two-step, waltz, cha-cha, rhumba, swing and more in the Spanish Ballroom. No partner or experience necessary. Lesson at 3. (foxtrot on the 9th, rhumba on the 23rd) \$14. Info: Dave Tucker, 703.861.8218, [dave@hotsociety.net](mailto:dave@hotsociety.net) or [www.hotsociety.net](http://www.hotsociety.net).

novices welcome. Info: Katya, 301.270.4175 or [Katya@partan.com](mailto:Katya@partan.com), or Joan at 202.363.6197.

#### DC BLUEGRASS UNION VFW JAM TAKOMA PARK, MD

#### 1ST & 3RD MONDAYS • 7–10 PM

Free. Non-smoking. At Veterans of Foreign Wars Post 350, 6420 Orchard Ave. (corner of 4th Ave.), 20912, near New Hampshire and Eastern Aves. Info: VFW Post 350 at 301.270.8008 or Barb Diederich; [barb@barbdiederich.com](mailto:barb@barbdiederich.com)

### Tuesdays

#### FOLK CLUB OF RESTON/ HERNDON • HERNDON, VA EVERY TUESDAY • 7:15 PM



At the Amphora Diner Deluxe, 1151 Elden St., 20170. Open-mic format. 2nd Tuesday includes 25-minute member showcase; monthly concerts usually 3rd Tuesday, price varies. Smoke-free environment. Info: [www.reston-herndonfolkclub.com](http://www.reston-herndonfolkclub.com), 703.435.2402.

#### SEA CHANTEY OPEN PUB SINGS • WHEATON, MD 1ST TUESDAYS • 8–10 PM

*The Ship's Company* chantermen host open-mike sea-chantey sings. No cover/minimum; arrive early for a table. Participation encouraged but not mandatory. Requests honored if possible. Mostly *a cappella* but instruments are welcome. Info: Myron Peterson at [ructic@yahoo.com](mailto:ructic@yahoo.com) or [www.shipscompany.org](http://www.shipscompany.org).

1st Tuesdays—The Limerick Pub, 11301 Elkin St., Wheaton, MD 301.946.3268

**SHAPE-NOTE SINGING • SE WASHINGTON, DC**  
**3RD TUESDAYS • 7–9 PM**

Capitol Hill Presbyterian Church, 201 4th St. SE, 20003. Some street parking is possible—less than a ten-minute walk from Capitol South and Eastern Market Metro stations. Enter by a side door around to the left side of the church. Info: **540.955.2660**, [dcshapenotesingers@groups.facebook.com](mailto:dcshapenotesingers@groups.facebook.com), or [mseltzqwc@comcast.net](mailto:mseltzqwc@comcast.net)

*Wednesdays*

**BALTIMORE SINGERS CLUB • BALTIMORE, MD**  
**1ST WEDNESDAYS • 7:30–10:30 PM**

The emphasis is on singing, swapping, learning and developing the performance of materials in the Orleans tradition. Choruses not required. All levels welcome. Admiral Fell Inn at 888 South Broadway (Fells Point area of the city). Call **Severn Savage** at **301.343.3496**

**SEA CHANTEY OPEN PUB SINGS**  
**BALTIMORE, ANNAPOLIS AND DC**

**2ND, 3RD & 4TH WEDNESDAYS • 8–10 PM**

The Ship's Company chanteymen host open-mike sea-chantey sings. Participation encouraged but not mandatory. Requests are honored if possible. Info: **Myron Peterson** at [ructic@yahoo.com](mailto:ructic@yahoo.com) or [www.shipscompany.org](http://www.shipscompany.org)

- April**
- 9 Wharf Rat**, 801 S. Anne Street (Fell's Point), Baltimore 21231
  - 16 Galway Bay**, 63 Maryland Ave, Annapolis 21401
  - 23 Laughing Man Tavern**, 1306 G St., NW DC, 20005

**ARLINGTON JAM! • ARLINGTON, VA**

**1ST AND 3RD WEDNESDAYS • 7–10:30 PM**

Fiddles, guitars, all instruments welcome! Intermediate and advanced players interested in old-time, blues, Scandinavian, swing, and other styles. Also on second Thursdays at 1909 N. Ohio St., 22205. Info: **Lilli Vincenz**, **703.532.2731** or [FiddlerLilli@verizon.net](mailto:FiddlerLilli@verizon.net)

**CAJUN JAM • GREENBELT, MD**  
**4TH WEDNESDAYS • 7–9 PM**

Monthly open Cajun jam and dance. New Deal Café, 113 Centerway, Roosevelt Center, 20770. More info: **301.474.5642** or [www.newdealcafe.com](http://www.newdealcafe.com). Check website to confirm.

*Thursdays*

**IRISH TRADITIONAL/BUEGRASS MUSIC SESSIONS**  
**FREDERICK, MD**

**EVERY THURSDAY • 7 AND 8:30 PM**

At Boe's Strings, 26 S. Market St., 21701. Info and tune list at [www.BoesStrings.com](http://www.BoesStrings.com) or Boe at **301.662.0750**

**FOLK HOOT! • MT. RAINIER, MD**  
**2ND THURSDAYS • 7–9 PM**

**Bruce Hutton** is hosting a traditional folk music open mic at the Urban Eats Art and Music Café at 3311 Rhode Island Ave., 20712. More info, call **Bruce** at **301.802.7669**, or [www.facebook.com/urbaneatsmd](http://www.facebook.com/urbaneatsmd).

**BALTIMORE SHAPE NOTE SINGING • MD**  
**2ND AND 4TH THURSDAYS • 7–9:30 PM**

Light potluck supper at 8:15. All are welcome. Cathedral of the Incarnation, 4 E. University Pkwy. Info: [kmore-no@gmail.com](mailto:kmore-no@gmail.com), or see [bmoreshapenote.com](http://bmoreshapenote.com) for an attractive and informative website.

**FOLKSONG SING-IN • WHEATON, MD**  
**3RD THURSDAYS • 8–10 PM**

Join local musician **Brad Howard** every month for this musical gathering. Everyone gets a chance to lead the room in song. Bring your favorite folk tunes, your voice, and even your instruments for a great evening of song and pub-style fellowship. The Limerick Pub is at the corner of Elkin and Price, a few doors down from the Royal Mile Pub, 11301 Elkin St., 20902 [www.thelimerickpub.net](http://www.thelimerickpub.net)

*Fridays*

**KINGSTOWNE BLUEGRASS JAM • ALEXANDRIA, VA**  
**1ST AND 3RD FRIDAYS • 6–9 PM**

Kingstowne Acoustic Music hosts an open bluegrass jam twice monthly. 5830 Kingstowne Center, #110. Info: **703.822.9090**, [www.kingstowneacousticmusic.com](http://www.kingstowneacousticmusic.com)

**GLEN ECHO OPEN BAND • GLEN ECHO, MD**  
**2ND FRIDAYS • 8:30–11:30 PM**

The fabulous *Glen Echo Open Band* plays for the second-Friday contra dance. All instruments and levels of ability are welcome. Find recordings, tunebook names and page numbers of tunes played by the Open Band at [www.openbandonline.com](http://www.openbandonline.com). The site works best using iTunes on a PC or a Mac. Info: [www.fridaynightdance.org](http://www.fridaynightdance.org)



*Saturdays*

**ARCHIE EDWARDS BLUES JAM • RIVERDALE, MD  
SATURDAYS • 1–5 PM**

Acoustic instruments, all skill levels and listeners welcome. 4701 Queensbury Rd, 20737, across from the Riverdale MARC train station. Ample parking. Free, but donations welcome. Info/confirmation: 301.396.3054 or [www.acousticblues.com](http://www.acousticblues.com)



*Storytelling*

**FSGW Storyswap on  
Saturday, April 5  
See page 4 for details.**

**\*\* NEW \*\*  
MONTHLY STORYTELLING SERIES  
TAKOMA PARK, MD  
FIRST THURSDAYS THROUGH JUNE  
7:30–9:30 PM**

The Grapevine, old-fashioned storytelling of truths and myths and everything between. Takoma Park Community Center, 7500 Maple Ave., 20912. Suggested donation \$10 to support the storytellers. Info: [arts@takomaparkmd.gov](mailto:arts@takomaparkmd.gov), [timtales@verizon.net](mailto:timtales@verizon.net), or <http://www.takomaparkmd.gov/arts>

**April 3—Host Noa Baum** welcomes featured tellers **Walter Jones**, from Baltimore, and **Limor Shiponi**, from Israel.

**HAMMERED DULCIMER JAM • MCLEAN, VA  
SATURDAY, APRIL 26 • 1:30–4:30 PM**

Hammered dulcimer players of all levels meet monthly to swap tunes and play together; other acoustic instruments welcome. Dolley Madison Library, 1244 Oak Ridge Ave. 703.356.0770. Info, [eholsop@gmail.com](mailto:eholsop@gmail.com) or <http://sites.google.com/site/nvhdplayers>,

**SHAPE-NOTE SINGING • BERRYVILLE, VA  
FIRST SATURDAYS (USUALLY) • 4–8 PM**

Meetings exclude April, August and December. Singing is from the *Sacred Harp* and *The Shenandoah Harmony*. Pot-luck supper at 6. Info: [www.shenandoahharmony.com](http://www.shenandoahharmony.com), or send queries to **John del Re** at [jdelre@visuallink.com](mailto:jdelre@visuallink.com)

**May 1—Noa Baum** welcomes featured tellers **Laura J. Bobrow**, **Gary Lloyd** and marvelous griot **Janice Curtis Greene**.

**TALES IN THE VILLAGE • CHEVY CHASE, MD  
WEDNESDAY, APRIL 16 • 7:30 PM**

Baltimore storyteller **Jo Tyler** in a one-woman show. **Ellouis Schoettler** hosting. Free, Friendship Heights Village Community Center, 4433 South Park Drive.

**INTERNATIONAL DAY OF THE BOOK  
KENSINGTON, MD  
SUNDAY, APRIL 27 • 11–4 PM**

*Twinbrook Tellers*, a youth storytelling group, will be telling tales, time TBA. [www.dayofthebook.com](http://www.dayofthebook.com)

**FSGW Board 2013–2014**

April Blum, *president*  
Mary Cliff, *past president*  
Charlie Baum, *vice president*  
Richard Aigen, *treasurer*  
Noel-Marie Taylor, *secretary*  
Marty Summerour, *programs*  
Steve Burnett, *dance*  
Janie Meneely, *membership*  
Roxanne Watts, *publications*  
Liz Milner, *publicity*  
Members-at-Large  
Tom Livengood  
Molly Hickman  
Steve Winick

[president@fsgw.org](mailto:president@fsgw.org)  
[pastpresident@fsgw.org](mailto:pastpresident@fsgw.org)  
[vicepresident@fsgw.org](mailto:vicepresident@fsgw.org)  
[treasurer@fsgw.org](mailto:treasurer@fsgw.org)  
[secretary@fsgw.org](mailto:secretary@fsgw.org)  
[program@fsgw.org](mailto:program@fsgw.org)  
[dance@fsgw.org](mailto:dance@fsgw.org)  
[membership@fsgw.org](mailto:membership@fsgw.org)  
[newsletter@fsgw.org](mailto:newsletter@fsgw.org)  
[publicity@fsgw.org](mailto:publicity@fsgw.org)

301.422.0292  
703.534.7581  
301.589.6855

410.868.7861  
703.981.2217  
571.357-2505

703.618.1799

[board1@fsgw.org](mailto:board1@fsgw.org)  
[board2@fsgw.org](mailto:board2@fsgw.org)  
[board3@fsgw.org](mailto:board3@fsgw.org)

**FSGW Web Steering Committee**

Sandy Aubin, *Committee Co-Chair*  
April Blum, *Committee Co-Chair*

[web@fsgw.org](mailto:web@fsgw.org)  
[president@fsgw.org](mailto:president@fsgw.org)

301.422.0292

**Mini-Festival Coordinating Committee**

April Blum, *Mini-Fest Chair*

[minifest@fsgw.org](mailto:minifest@fsgw.org)

301.422.0292

**Washington Folk Festival Coordinating Committee**

Dwain Winters

[DWAINFEST@aol.com](mailto:DWAINFEST@aol.com)

301.657.2789

**FSGW BOARD MEETINGS**

**TUESDAY, APRIL 8 • 8 PM**

The monthly FSGW board meetings will be held in Classroom 201 Arcade Bldg at Glen Echo Park, MD. All FSGW members may attend. If you wish the Board to consider a particular matter, please contact the appropriate board member, or **April Blum** by e-mail, [president@fsgw.org](mailto:president@fsgw.org), or call afternoons or evenings 301-422-0292 in advance of the meeting.

# Workshops, Weekends, Festivals & Special Events

House of Musical Traditions offers two workshops in April, both to be held at 7010 Westmoreland Ave, Takoma Park MD.  
[workshops@hmtrad.com](mailto:workshops@hmtrad.com), 301.270.9090

## **CLAWHAMMER BANJO WORKSHOPS WITH BRAD KOLODNER**

**THURSDAYS, APRIL 3, 10, 17 & 24 • 7 PM**

Beginning class meets 7-8 pm, Intermediate class ("Beyond the Bum-Ditty") from 8:15-9:15pm. \$100 for 4-week session. Loaner banjos available for \$20. Info <http://hmtrad.com/lessons/workshops.html#kolodner>

## **"GILLACAMP" GUITAR WORKSHOPS W/RICHARD GILEWITZ**

**SATURDAY, APRIL 5, 12-3PM**

Three 50-minute sessions on different fingerpicking topics - take 1 for \$30 or all 3 for \$75. Complete info on <http://hmtrad.com/lessons/workshops.html#gillacamp>

## **13TH ANNUAL DCLX WEEKEND GLEN ECHO PARK, CHEVY CHASE, DC FRIDAY TO SUNDAY, APRIL 25-27 TIMES VARY**

*DC Lindy Exchange* is hosting their **13th Annual DCLX Weekend** with seven dance events, some going all-night long. For more information on the events and weekend package pricing, e-mail [info@DCLX.org](mailto:info@DCLX.org), or contact **Robert Patch** at 301.674.0080.

## **BFMS SPRING FAIRE • TOWSON, MD SUNDAY, APRIL 27 • 12-5 PM**

The Spring Faire is a free event for all ages hosted by the Baltimore Folk Music Society in partnership with the Cromwell Valley Park Council. Join in the many impromptu jam sessions around the park, sing with zest in a variety of singing workshops, dance around the maypole, buy hand-crafted items, and bring a picnic for the front lawn of the Sherwood House. **Cromwell Valley Park, 2002 Cromwell Bridge Rd, Sherwood Farm Entrance**, \$5 tax-deductible donation per car for parking is suggested (though not required). Proceeds help cover the expenses of the Spring Faire and benefit the Cromwell Valley Park Council. For more information or to volunteer: 410-979-8150 or [springfaire@bfms.org](mailto:springfaire@bfms.org)  
Schedule : <http://www.bfms.org/springfaire.php>.

## **JOE NEWBERRY CLAWHAMMER WORKSHOP SPRINGFIELD, VA**

**SATURDAY, MAY 3 • 10-3 PM**

Internationally known for his powerful banjo work, **Joe Newberry** is a prizewinning guitarist, fiddler, singer, and songwriter. A noted teacher of traditional music and song, Joe has coordinated Old-Time Week at the Augusta Heritage Center for the past six years. <http://joenewberry.me/wordpress/> \$60 includes house concert. Registration and directions: **Lisa**, [littlelizajane@cox.net](mailto:littlelizajane@cox.net) or 571.201.4711.

## **FOLK COLLEGE WEEKEND • HUNTINGDON, PA MAY 23 TO 25**

A fun and friendly weekend of folk music, 155 miles from D.C., in the lovely Allegheny Mountains (at Juniata College). 8 master workshops featuring **Bruce Molsky, Orrin Star**. Classes and performances by *The Hot Seats*, **Ira Gitlin and Dede Wyland, Wendi Bourne, Yann Falquet and Pascal Gemme, Laura Cortese, Mariel Vandersteel**. [www.folkcollege.com](http://www.folkcollege.com)

## **FREE BANJO CONCERT • BOILING SPRINGS, PA SATURDAY, MAY 24 • 7:45 PM**

Free banjo concert, the music is not bluegrass, but classic banjo featuring marches, foxtrots, and polkas written and performed around 1900. The players use 5-string banjos with nylon strings. The Allenberry Resort, 1559 Boiling Springs Rd, **800.430.5468**, Another concert will be held October 25, in Utica NY. Info: [www.banjofraternity.org](http://www.banjofraternity.org)



# FSGW History *continued from page 11.*

The first program/concert was scheduled for November 8, 1964, featuring Irish musician **Seamus Ennis**. At the last moment, disaster struck; **Ennis** cancelled because of illness. **Chuck and Nan**, and another charter



The McPeake Family, c. 1965

member, **Joe Bossom**, performed in **Ennis's** place and saved the day. Members could attend a free program each month just as they do now, but in the early years, the program was just as likely to be an evening of folklore-related movies or a scholarly lecture as a concert. FSGW's most ambitious program that first year was a concert by the **McPeake Family** of Belfast, Ireland, held March 12, 1965, at The Hawthorne School in Southwest D.C.

FSGW was not the first folk-music organization in the area, but it has certainly been one of the longest lasting and most successful. By 1964, Washingtonians could already find lots of "folk music" in the area, ranging from pop-folk to more traditional music. DJ **John Dildine** (FSGW's first president) introduced folk music to local radio audiences in the late 1950s and hosted community "hoots" or sing-alongs in Cabin John, Maryland. A few years later, another DJ, **Dick Cerri**, turned WAVA Radio's *Music Americana* program into a folk-music show, which by 1963, aired for 5 or 6 hours every day of the week! The Cellar Door opened in 1963 as a folk club, and many area coffee-houses, like the Ontario Place, the Unicorn Coffeehouse, and Coffee and Confusion, also featured live folk music. Two folk-song organizations deserve note as FSGW's predecessors, the George Washington University Folk Song Club and the Washington Folk Music Guild. The GWU club's heyday was 1961 to 1964, and the Guild existed from 1962 to early 1964. FSGW's founders hoped that the new organization would "further the understanding, investigation, appreciation, and performance of the traditional folk music and folk lore of the American people."

## FSGW Programs, 1964-65

During its first program year (November 1964 through July 1965), FSGW sponsored a TOTAL of 10 programs — far fewer than FSGW now offers in a single month! ...

These programs are detailed in the full article, to be published on the 50<sup>th</sup> anniversary page on the website.

## September 30 to October 2, 1966

... The August 1999 FSGW Newsletter announced that this year's Getaway would be held at Prince William Forest Park near Dumfries, Virginia. The move to Prince William marked a return to the site of the very first FSGW "Get-Away," which was held 33 years ago. (Note the spelling of "Get-Away" with a hyphen; that spelling was used for the first two years, and then the hyphen disappeared.)

FSGW co-founder **Nan Perdue** dreamed up the idea of the Get-Away. She wanted to create an FSGW "retreat"—something informal and inexpensive so that families could have a nice, affordable, relaxed weekend away from home. She committed the organization to paying \$1,200 up front in expenses—which seemed an enormous sum to several board members! The treasurer, in particular, was fearful that they would never recoup their costs and that Nan's actions would bankrupt the still small and struggling FSGW. Things turned out fine, though, with FSGW earning a net income of \$39, and so the Get-Away became an annual event.



Get-Away II, Spring, 1967, Bob Clayton on guitar, the late Dick Rodgers [goatee & glasses] on the left.

It took a few years to decide exactly when the Getaway should be held each year. The first Getaway was held in early fall, September 30 to October 2, 1966. Get-Away II took place a mere six months later, in the spring of 1967. The third one



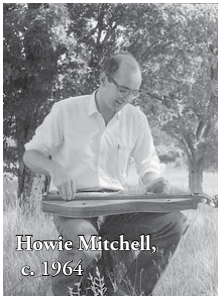


Andy Wallace, c. 1967

was also a spring event, held in early May 1968—with FSGW co-founder **Andy Wallace** as chair. Getaway IV did not take place for nearly a year and a half—September 19 to 22, 1969. From 1969 for many years, a Getaway was held each fall at Prince William Forest Park.

Folk music organizations in other cities created their own weekend retreats more or less modeled on FSGW's Getaway – including Atlanta, Pinewoods (NYC), Boston, and Philadelphia – but FSGW seems to have organized the first such non-festival folk music retreat!

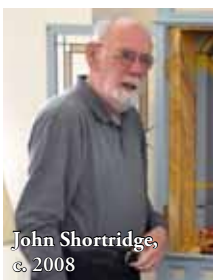
## FSGW Firsts • FSGW and Sacred Harp



Howie Mitchell,  
c. 1964

Nearly twenty years before the Sacred Harp revival captured America's imagination, a group of Washington area friends—including FSGW founding members **John and Ginny Dildine, Joe Hickerson, Howie and Ann Mitchell, John and Mary Helen Shortridge, and Scott and Dottie Odell**—discovered and began singing the music. The D.C. area's contribution to this movement remains largely unrecognized, an omission this article will begin to try to correct!

In 1961, the **Shortridges** received a gift of a recording: *The American Harmony*, a performance by the University of Maryland Chapel Choir of “a selection of fugueing and playing tunes with a fine anthem,” including pieces by Irving Lowen. Mary Helen described the record as “an absolute revelation.” They were intrigued by the strangeness and singability of the music.



John Shortridge,  
c. 2008

The **Shortridges** moved away briefly but returned to the area in early 1964, and John joined **Howie Mitchell** as a teacher at Hawthorne School—the same school where a number of FSGW's earliest events were held. He made copies of shape note song sheets he found in the Library of Congress and used them both with students and friends. Later that year, just as FSGW was starting, they discovered they could get copies of *The Original Sacred Harp* book from **Hugh McGraw** in Bremen, Georgia. When McGraw received an order for 10 copies of the book from an unknown group in D.C., he promptly contacted **Joe Hickerson** at Library of

Congress. “Who are these people ordering all these books? Are they a bunch of Communists?” Joe reassured him on that score, and he sent the books.

Once they had the books, however, they felt compelled to use them. Thus, a new tradition was born. One Sunday afternoon each month, they assembled. They sang for couple of hours, then broke for a potluck supper. Time for dinner was announced by singing, “Must dinner hour delay, fly swift around ye idle maids and bring a cup of tay.” In those days, it was all very informal. They sang the music as they would sing any other music—sight-reading notes, ignoring the unusual shapes, no standing in squares, no singing Fa-So-La's—but they loved socializing with good friends and singing the beautiful music.

Participants in these D.C.-area Sunday gatherings helped “spread the word” about Sacred Harp music, both locally and beyond. When they went to festivals or performed at coffeehouses in other parts of the country, they introduced others to it. Eventually—in the fall of 1968—FSGW Newsletters started listing a Sacred Harp Sing as a regular once-a-month activity, which it still is today.

### Footnotes:

1. The information and quotes contained in this article come from interviews with Mary Helen Shortridge (4/2/94), the Odells (7/24/94), and Joe Hickerson (2/16/94).
2. In Spring, 1977, as a college sophomore, the author attended one of the Sacred Harp revival's earliest recognized events—a one-day convention at Wesleyan University, Middletown, CT.
3. *The American Harmony*, Washington Records, 1960



P.O. Box 323  
Cabin John, MD 20818

PRESORTED  
FIRST CLASS MAIL  
US POSTAGE PAID  
ROCKVILLE, MD  
PERMIT #4297

[www.fsgw.org](http://www.fsgw.org)

Printed on recycled paper.

Address Service Requested

 **FIRST CLASS**

The Folklore Society of Greater Washington is a not-for-profit [Section 501(c)(3) of the IRS code] institution, and we encourage the financial contributions of our members. Contributions in excess of annual dues are welcome and may be tax-deductible. Please mail your gift to FSGW, P.O. Box 323, Cabin John, MD 20818. Subscriptions to the Newsletter are available only outside the Greater Washington Metro area.

**FSGW IS DEDICATED TO PRESERVING AND  
PROMOTING TRADITIONAL FOLK ARTS IN THE  
WASHINGTON, D.C., METROPOLITAN AREA.  
MEMBERSHIP IS OPEN TO ALL WHO SUPPORT THESE GOALS  
UPON PAYMENT OF DUES.**

## FSGW Membership Form

☐ RENEWAL      ☐ NEW ADDRESS      ☐ NEW MEMBERSHIP\*

☐ I WANT ONLY THE ELECTRONIC COPY OF THE NEWSLETTER  
(NO PAPER COPY SENT)

	INDIVIDUAL	FAMILY
1 year	<input type="checkbox"/> \$33	<input type="checkbox"/> \$45
2 years	<input type="checkbox"/> \$62	<input type="checkbox"/> \$85
3 years	<input type="checkbox"/> \$91	<input type="checkbox"/> \$125
LIFE	<input type="checkbox"/> \$550	<input type="checkbox"/> \$800
Student	<input type="checkbox"/> \$25	

☐ **Newsletter Subscription ONLY \$25**  
Available ONLY to those living OUTSIDE the Greater Washington Metro area.  
Newsletter Subscription carries NO membership privileges.

**\*If you are a new member, where did you get this newsletter?**

- ☐ at Glen Echo Park (which event? \_\_\_\_\_)  
☐ Another FSGW Event (which one? \_\_\_\_\_)  
☐ From a friend who is a member  
☐ At my public library      ☐ Other \_\_\_\_\_



Send form and check made payable to FSGW to:  
FSGW Membership • FSGW, c/o M. Burnett, 10001 Boreland Ct., Bristow, VA 20136

Name(s) \_\_\_\_\_

Address \_\_\_\_\_

City \_\_\_\_\_ State \_\_\_\_\_ Zip \_\_\_\_\_

Phone(s) \_\_\_\_\_

H: \_\_\_\_\_ - \_\_\_\_\_ - \_\_\_\_\_ W: \_\_\_\_\_ - \_\_\_\_\_ - \_\_\_\_\_

E-mail: \_\_\_\_\_

**May we list you in our Membership Directory?**  
(FSGW does not provide mailing lists to any other organizations.)

☐ Yes ☐ No

☐ Yes, but do not list my:

☐ address    ☐ home phone    ☐ work phone    ☐ e-mail