



NEWSLETTER

Volume 51, Number 6

fsgw.org

February 2015

FSGW Midwinter Festival

Silver Spring/Takoma Park, MD

Saturday, February 7

Noon to 10:30 pm



Full details starting
on page 3
Schedule on page 14

FSGW Program • FREE to FSGW Members

WES Auditorium, Washington, DC

Alex Caton and Pat Egan

Saturday, February 21 • 8 pm



We're in for a treat when multi-instrumentalist, singer and songwriter **Alex Caton** is joined by musical partner, singer and guitarist **Pat Egan**. You might have seen Alex when Ginny Hawker and Tracy Schwarz performed for us last year – she was their opening act. Ginny and Tracy are known for mentoring young performers, so we knew they'd bring a gem.

Born in England, **Alex Caton** was a longtime student of piano and violin when her family settled in the U.S. Discovering Appalachian old-time and Irish fiddle music about twenty years ago changed

Continued on page 2.

INSIDE:

FSGW

Ad policy	6
Advance Notices.....	13
Board Meeting Highlights.....	6
Board Members/Meeting	6
Calendar	12-13
Editorial Policy	6
English Country Dances	8
Family Dance	8
Mid-Winter Festival (Mini Fest).....	3 & 4
Mini Fest Schedule	14
Great American Square Dance	9
Co-sponsored Dances	9
Sings & Storytelling	5
Sunday Night Dances	7
Washington Folk Festival	22

Non-FSGW Events

Concerts	10
Classes.....	11
Dances.....	15
Jams/Open Mics/Sings.....	19
Storytelling.....	21
Workshops/Festivals/Weekends	21

Alex Caton and Pat Egan *continued from front page.*



her life. She moved to Virginia to absorb the music, studying fiddle, banjo, guitar and voice with some of the masters. She hones her talents at countless jam sessions, has been a member of several bands and appears in shows ranging from house concerts to major festivals. But teaching is her passion – in schools, at festivals and fiddle camps (some of which she founded), and in the home studio she built just for that purpose. She understands the need for learning traditions from the elders, practicing them, and passing them on to younger generations. She is also adding to those traditions by writing songs and tunes.

You might have seen Irish-born **Pat Egan** performing in bands, playing for folk dances or leading traditional sessions. He came to the Midwest from Tipperary at the invitation of noted accordionist Paddy O'Brien to form the band *Chulrua*. While in the Midwest, he found himself attracted to America's old-time music. He and Alex met in the late '90s, when both were living in Asheville, NC. They've been friends ever since, and musical partners much of that time as well. These days you're likely to see this very busy performer working with hammered dulcimer player Maggie Sansone, with flutist Laura Byrne, or as part of various bands: *Old Pitch*, *Jug of Punch*, *the Hedge Band* or *The Sound of Sleat* (who recently released a CD). Pat is known for his warm, resonant singing voice and his solid rhythm guitar. He, too, is a teacher, emphasizing rhythm and guitar accompaniment.

What to expect? Appalachian (rooted, of course, in the Scots-Irish tradition), Irish songs, and tunes in those traditions. To borrow from a Myron Bretholz review: "This duo weaves a beautiful and intricate tapestry of sounds, drawing from the rich traditions of both Irish and old-time music. Their spellbinding instrumental selections and poignant songs reflect not only a depth of knowledge, but also a true passion for the material." It promises to be a fun evening for sure. To sample the breadth of their work, check their websites: alexcaton.com and pateganmusic.blogspot.com, then join us on **Saturday, February 21, 8 pm; general admission: \$15; free to FSGW members. At Washington Ethical Society Auditorium, 7750 16th Street, NW, Washington, DC 20012.**

Please park on 16th Street, not on Kalmia.

FSGW Board Elections

FSGW could not offer the hundreds of concerts, dances, festivals and other events each year without the many Society members who volunteer to make it all happen. The FSGW Board of Directors is recruiting Board members through our annual election process for a one-year term beginning on July 1. If you're ready to give back to an organization that provides so much, please consider running for the Board.

The Election Committee invites you to nominate candidates for the 2015–2016 Board. The Committee is compiling a slate of candidates for the May election. You may offer your nominations for the FSGW Board at the Monthly Programs in February and March, and at the Sunday contra dance on February 28 (March date TBA). These events are official Folklore Society meetings for the purpose of receiving nominations for the Board from the membership. Nominations may also be submitted directly to the Election Committee (prior to March 30) by petition signed by five current FSGW Members. You can contact the Election Committee at elections@fsgw.org.

FSGW Midwinter Festival

Silver Spring/Takoma Park, MD

Saturday, February 7

Noon to 10:30 pm



Come out and play (and dance and sing)! It's time for the FSGW Mini-Fest. The annual celebration of all things FSGW—Chanteys and shape note singing, doo wop and duets, English dance and Irish laments, banjos and bodhrans and ballads. Dance all day, or try some of the 40+ workshops and concerts at 7 different venues throughout the school (plus unscheduled hallway shenanigans, sometimes involving Morris dancers, bells, sticks and hankies). We'll be at our usual location – **Takoma Park Middle School, 7611 Piney Branch Road** – on Saturday, February 7, from noon until 10:30 pm. Mark your calendars!

In the Cafetorium, six hours of fabulous concerts programmed by **Charlie Baum**. At noon, the dynamic duo of **Glyn Collinson** and **Andrew Marcus** – high-energy British traditional folk tunes and original songs. At 1, the **Sligo Creek Hedge School** perform Celtic music—**Karen Ashbrook** and her



students. Next will be the **Moondiggers**, a group that mines the stars for classic and original folk music. **Shenandoah Run** is a collegiate-folk-tyle big band – '60s "Folk Music with a Kick." At 2:45, we'll be **Cooking With Gas** – generous portions of blues seasoned with jazz and swing. Then all aboard for **Kensington Depot** – modern and traditional music, right on track. At 4, we welcome **The Rogue Farmers** – they call it "Farm Jazz" – all-acoustic fiddle, mandolin, guitar and dog-house bass. From 5 to 6, **Lyuti Chushki** – "Hot Peppers" – play rhythmically-complex traditional Balkan music.



The AmericanaRoots Room, programmed by **Martha Burns**, begins with crystalline close harmony by the **Blue Moon Cowgirls**. After that, look for award-winning guitarist and mandolin player **Orrin Star**, followed by the trio of **Bruce Hutton, Chris Romaine** and **Bill Mansfield**. At 3 pm, hear folklorist and fiddler **Alan Jabbour**, with banjo historian and instrumentalist **Greg Adams** from 4 to 5. Closing out the afternoon from 5 to 6, it's **Gary Wright** and **Leah Weiss**.



The Storytelling Program is back, organized by **Tim Livengood** under the theme "Golden Oldies." Featured tellers include **Tim Livengood, Walter Jones, Penelope Fleming, Gary Lloyd, Geraldine Buckley, Jennifer Hine** and **Michael Fleming**. And, of course, the young **Twinbrook Tellers** will be back for two sessions. There will even be a half-hour storyswap at the end of the afternoon.

The Jams Room, programmed by **Charlie Baum** and **April Blum**, will start with a **Gospel Sing** at noon, followed by **Shape Note Singing** at 1, and **Sea Chanteys** from 2 to 3. A raucous 45-minute **Morris Chorus** will be followed by an intense blues jam featuring musicians from **Archie's Barbershop**, and we'll round off the afternoon with a rousing **Irish Seisiún**.



Lisa Null's Traditional Song Room begins at noon with an extended "family" of individuals: **Bill Day, Darriel Day, Rita Ferrara, and Jocelyn Winkler**. Then **Riki Schneyer** sings mostly American songs – everything from ballads to gospel starting at 12:45, with **Peter Brice**, singing in the classic Irish style at 1:15, followed by old-time songs in **Martha Burns**, straight and lovely old-time way. At 2:15 there's a one-hour

Continued on page 4.

FSGW Midwinter Festival continued from page 3.

ballad session, with **Bea Lehman, Melissa Weaver Dunning, Connie McKenna, Steve Winick, and Charlie Baum** – story songs sung by those who love to sing them. At 3:15, **Oma Pearl** (lead singer for *Conjure Woman*) breathes fresh meaning into songs from the African-American tradition. Next up are **Betsy and Meara O'Malley**, a mother-daughter pair, who sing mostly Irish songs. At 4:30 **Don Stallone** shares his powerful songs and dry wit. **Calico Jenny** takes over at 5 to present songs of the sea, many from a woman's perspective, and the afternoon ends with fine local traditional singer and songwriter **Bob Clayton**.

Matilda's Café (programmer **Matilda Gawf**) features **Basswood** (folk rock on some unusual instruments, including kazoo and glockenspiel), followed by **Lulu's Fate** (guitar, mandolin, cello). At 2, **Debra and John Annen** perform as the duo **DeJohn**. **Lea Morris** and **Matt Holsen** are up next, with **SoulFolk** – a mix of gospel, jazz, and R&B. At 4 it's **Zach Parkman & Friends** doing acoustic country, folk and blues. And the feathers will fly at 5 when the **Barnyard Prophets** perform – **Phil Fox** and **Severn Savage** specialize in harmonious humor.

In the Concerts/Workshops Room, Judy Oppenheim has scheduled **The Scrub Pines** at noon, followed by Mini-Fest favorites **Slaveya** in their beautiful black, white and gold costumes from 1 to 2 pm. **Capital Accord Chorus** will sing from 2 to 3, and then it's the ever-popular **Doo Wop workshop**, led by the fabulous **Flawn Williams**. **The Squeezers** – **Jim Besser, Gus Voorhees, Randy Stein** and **Tom Sanford** – will close out the afternoon.

The Main Gym features **English Country Dance** at noon, as **Melissa Running** calls to music by the **Treblemakers** (**Liz Donaldson, Emily Aubrey, Robin Wilson**). Then a rollicking **Barn Dance** called by **Ann Fallon** to old-time local favorites **AP & the Banty Roosters** (**Andy Porter, Mark Lynch, Joe Langley, and Art Abrams**). There's a tango workshop at 2, featuring the impressive **Tango Mercurio Orchestra**. **Lisa Brooks** and **Dan Kahn** will lead a Scandinavian dance workshop at 3 with nyckelharpa accompaniment by **Melissa Running**, followed by something new this year – a chance to give flamenco a fling – a workshop led by **Flamenco Furia**. And at 5, a special "Introduction to Morris Dancing for Women," led by the **Rock Creek Morris Women**.

The Auxiliary Gym will begin with an hour of open waltz, with beautiful music by **Furia Flamenco**. Then two hours of contra – the first hour with calling by **Shane Knudsen** and music by **The Treblemakers** (**Liz Donaldson, Emily Aubrey, Robin Wilson, and Brenna Hogan**) – and the second with calling by **Ann Fallon** and music by **The MetroGnomes** (**Bob Garber, Mark Vidor, and McGregor Yatsevitch**). The **MetroGnomes** will play couples dances from 3 to 4, followed by two hours of Cajun music – first an hour with the engaging **Cypress Trio** – and then a one-hour open Cajun jam.

From 7:30 to 10:30, two simultaneous evening programs: In the **Main Gym**, an evening of contras and squares with the **Fabulous Glen Echo Open Band** and a cavalcade of local callers. In the **Cafetorium**, a delightful concert programmed by **Charlie Baum**. **The Harley String Band** leads off, followed by **Dueto Dulcemelos** from Mexico, with the rollicking **Capitol Hillbillies** to close the evening.

— **April Blum**, Mini-Fest Chair

TICKET PRICES

Day plus evening (noon to 10:30 pm)

FSGW Adult Member \$15 FSGW Child (6–12) \$8 FSGW Family Maximum \$45
Non-FSGW Adult \$20 Non-FSGW Child (6–12) \$10 Non-FSGW Family Max \$55

Day (noon to 6 ONLY) or Evening (6 to 10:30 ONLY)

FSGW Adult Member \$10 FSGW Child (6–12) \$5 FSGW Family Maximum \$25
Non-FSGW Adult \$15 Non-FSGW Child (6–12) \$7 Non-FSGW Family Max \$40

FSGW Sings/Swaps/Events

FSGW OPEN SING • BETHESDA, MD FRIDAY, FEBRUARY 6 • 8:30–11:30 PM

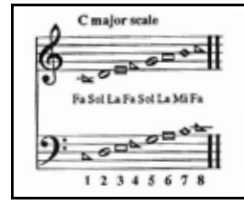
The February FSGW Open Sing will be hosted by Mary Ann Daly. Theme: Invitations ("Let's...") Everyone welcome. Most songs presented from memory, but cheat sheets often appear. Don't worry if you can't think of a song on topic – come anyway! Please bring a snack for sharing. Address 5301 Westpath Way, 20816, between MacArthur and Massachusetts, about a mile from Glen Echo. Contact Mary Ann at **301-229-8534** or madaly@verizon.net.

FSGW GOSPEL SING • KENSINGTON, MD SUNDAY, FEBRUARY 8 • 4–8 PM

FSGW Gospel Sings are held on second Sundays at various homes. Singing starts at 4 pm and breaks for a covered-dish supper at 6 pm, with more singing after supper. Everyone is welcome! This month's Sing will be at the home of Karen Smith in Kensington. Info: **240-338-0180**.

FSGW STORYSWAP • COLUMBIA, MD SATURDAY, FEBRUARY 21 • 7:30 PM

Storytellers from beginners to expert, and story listeners of all experience levels are invited to the home of Cricket Parmalee for an evening of shared stories and potluck snacks. Free. For RSVPs and directions, contact Cricket at **Cricket1415@yahoo.com**.



FSGW SHAPE NOTE SINGING ALEXANDRIA, VA

SUNDAY, FEBRUARY 22 • 4-8 PM

Every fourth Sunday the shape note tradition comes alive with four-part harmony from *The Sacred Harp* (1991), *Shenandoah Harmony* (2013), and *Christian Harmony* (1959) fueled by a potluck supper. Loaner books are available, and all are welcome. Usually the singing is held upstairs (Room 19) and the potluck on the ground level of the Fellowship Hall of the First Christian Church of Alexandria, 2723 King St., 22302, about a mile from the Metro and Amtrak stations and GW Memorial. Info: Mary Ann Daly at **301-229-8534**, or madaly@verizon.net, or fsgw.org.

Directions: Transit: From the King Street Metro Station on the Yellow Line, take Dash Bus 5 (once an hour at 35 minutes after, e.g. 3:35) toward Van Dorn or Metrobus 28A (twice an hour at 15 and 45 minutes after, e.g. 3:45) toward Leesburg Pike/Tysons, alighting just beyond Janney's Rd. at King & Melrose Sts. **Driving Directions:** From downtown Alexandria, go out King Street past the Geo.Washington Masonic Memorial & just beyond Janneys Rd. The church is on the right at 2723 King St., with parking in back. Turn into the lot before the church (on the east side). The west side lot is for a nursing home. From I-395 (either direction), exit at King St. and follow it east (toward Alexandria). Go through several traffic lights and past T.C. Williams High School (on the right) and a cemetery (on the left). The church will be on your left (just past the Woodbine Nursing Home). Turn into the driveway just beyond the church. Enter the Fellowship Hall from the rear parking lot.

2015 Smithsonian Folklife Festival

The Smithsonian Folklife Festival is seeking people to fill temporary salaried positions for this year's Folklife Festival, taking place June 24-28 and July 1-5. Interviews will begin in January. Please see the Center for Folklife and Cultural Heritage website: www.folklife.si.edu for date and salary information, and the required Availability Questionnaire.

Event Positions

Admin Assistant
Design Assistant
Program Coordinator
Program Assistant
Participant Coordinator
Participant Asst.
Marketplace/Craft Asst.
Housing Coordinator
Volunteer Assistant
Supply Assistant
Accessibility Coordinator
Transportation Assistant

Event Site Positions

Admin. Technical Asst.
Asst. Tech Director/Foreman
Carpenter
Electrician
Exhibit Workers / Driver Supply Coord./Warehouse



JANUARY 2015 BOARD MEETING HIGHLIGHTS

The Board spent much of the meeting discussing the upcoming website data-migration process with Webmaster Will Strang.

Other items discussed:

- A request from Washington Ethical Society (WES) to remind concert goers to park on 16th Street, and not on neighborhood side streets.
- The election process, which should begin soon. Mary Cliff has agreed to be on the Election Committee, and Jim Cole will provide logistical expertise and support.
- A filmmaker has contacted FSGW about doing a short film about the Mini-Fest.

Next meeting will be Wednesday, February 4.

FSGW Newsletter Editorial and Advertising Policy

The Folklore Society of Greater Washington endeavors to print copy it deems relevant to its membership and purpose as stated in its by-laws:

"The main purpose of the Society is to further the understanding, investigation, appreciation, and performance of the traditional folk music and folklore of the American people."

- All copy (except ads) must be submitted by e-mail to publications@fsgw.org in text format in the body of the e-mail by the 10th of the preceding month.
- All listings must be submitted in the format found on our website, fsgw.org. Click on the newsletter tab and scroll down to the paragraph in green lettering.
- The Editor reserves the right to edit or omit copy as necessary. Ad content must be approved by the editor.

Basic Ad charges: 1/4 page ads (3.4" x 4.5" or 7.25" x 2.5"): \$65 for one month, \$120 for two. Commercial business: \$8 for 10 words. Non-commercial and individual: \$4 for 10 words. 25% discount for any single ad placed in 11 consecutive issues (one year) and paid in advance. We will work with you on larger ads. Copy, with check made payable to FSGW, must be received by the newsletter deadline. Mail to **FSGW, PO Box 323, Cabin John, MD 20818.**

Editor: • newsletter@fsgw.org •

Design & Layout: Jennifer Woods GRAPHICS • Silver Spring, MD • 301-587-7174

FSGW Board 2014–2015

April Blum, President
Charlie Baum, Vice President
Richard Aigen, Treasurer
Kim Gandy, Secretary
Steve Burnett, Dance
Judy Oppenheim, Programs
Janie Meneely, Membership
OPEN, Publications
Liz Milner, Publicity

Members-at-Large
Tim Livengood
Jadzia Sawa
Steve Winick

president@fsgw.org
vicepresident@fsgw.org
treasurer@fsgw.org
secretary@fsgw.org
dance@fsgw.org
program@fsgw.org
membership@fsgw.org
newsletter@fsgw.org
publicity@fsgw.org

301-422-0292
 301-587-6855

571-357-2505
 301-589-4008

board1@fsgw.org
board2@fsgw.org
board3@fsgw.org

Mini-Festival Coordinating Committee

April Blum, Mini-Fest Chair (Logistics/Dance) minifest@fsgw.org
Charlie Baum, Mini-Fest Co-Chair (Programs) cbaum@fsgw.org

301-422-0292
 301-587-6855

Washington Folk Festival Coordinating Committee
Dwain Winters DwainFest@aol.com

301-657-2789

FSGW BOARD MEETING

WEDNESDAY, FEBRUARY 4 • 8 PM

The monthly FSGW board meetings will be held in Classroom 301 Arcade Bldg. at Glen Echo Park, MD. All FSGW members may attend. If you wish the Board to consider a particular matter, please contact the appropriate board member, or **April Blum** by e-mail, president@fsgw.org, or call afternoons or evenings 301-422-0292 in advance of the meeting.

FSGW Sunday Night Dances

at Glen Echo Park, MD

Contras & Squares • 7:30–10:30 pm

Introductory lesson every Sunday • 7–7:30 pm

Join us for an evening of dancing at Glen Echo Park. Every Sunday FSGW (in cooperation with the National Park Service, Montgomery County, and the Glen Echo Park Partnership for Arts and Culture) presents contras and squares danced to live music by fabulous bands with entertaining callers. Experienced and new dancers welcome; no partner needed. **Welcome/Orientation session every Sunday at 7. Come early for an introduction to the basic moves.** Dances often become more challenging as the evening progresses. In February all the Sunday Night Dances are in the Spanish Ballroom. Bring water or a sports drink, and dress in layers. Smooth-soled shoes are kindest on your knees and ankles when turning. Info: **Penelope Weinberger** or **Steve Burnett**; dance@fsgw.org

Admission: \$10 for FSGW, BFMS, CDSS, and ATDS Members,
\$5 youth (with student ID if over 17)
\$13 for the general public..

February

1 Local favorites tonight! **Perry Shafran** calls to music by *Dance du Jour*: **Liz Donaldson** (piano), **Alexander Mitchell** (fiddle) and **Ralph Gordon** (bass).

8 **Nils Fredland** returns to call with *Maivish*. The band draws inspiration from traditional sources, reinterpreting the old and contributing to the new with hypnotic and scintillating melodies. The group is a collaboration between American fiddler **Jaige Trudel** and British-born guitarist **Adam Broome**. They have been performing together for more than a decade.

15 **Rachel McCandliss**, from Atlanta, calls to music by **Larry Unger** (guitar) and **Audrey Knuth** (fiddle).

22 **Janine Smith** calls to *Have-a-Heart Trappers* – they're wild, they're wonderful, and they're coming to us from West Virginia. **Lars Prillaman, Matt Metz, Martin Metz, and Evan Ball**. This dance is FREE to FSGW Members. There will be a brief FSGW meeting at the break.



FSGW sponsors events that are intended to foster a pleasant environment and a tolerant community, and to provide a comfortable experience for all.

FSGW DANCE EVENTS

FSGW English Country Dances

Glen Echo Town Hall, MD • Wednesdays • 8–10:30 pm

Dance on a wood floor in the climate-controlled community room of the **Glen Echo Town Hall, 6106 Harvard St., Glen Echo, MD 20812**. Bring clean, non-scuffing shoes for dancing. Cheerful, patient, talented callers are accompanied by top-notch musicians—every Wednesday a different and delightful mix of instruments, including piano, fiddle, flute, oboe, concertina, bassoon, cello, viola, and recorder. Light refreshments served at the break. Experienced and new dancers welcome. No partner required. **Info: Stephanie Smith 301-229-3577 or Roger Broseus English@fsgw.org**

Admission: \$10 for FSGW members, \$12 for non-members.

February

4

Stephanie Smith calls while **David Knight** (fiddle), **Barbara Heitz** (flute), and **Melissa Running** (piano) play the tunes.



11

Susan Taylor calls to the music of **Jeff Steinberg** (fiddle), **Bruce Edwards** (bassoon, concertina), and **Francine Krasowska** (piano).



18

Anna Rain leads the dances to the playing of **Chelle Fulk** (fiddle), **Colleen Reed** (flute), and **Laurie Andres** (guest pianist from Seattle).



25

Carol Marsh calls while **Becky Ross** (fiddle), **Karin Loya** (cello), and **Liz Donaldson** (piano) play the tunes.



FSGW Family Dance • Glen Echo, MD Sunday, February 8 • 3 – 5 pm

The FSGW Family Dance is a great shared activity for all ages and all types of celebrations. Make it part of a very special birthday party, or use it as a Brownie or Cub Scout outing. No experience necessary – just come on out and dance – an experienced (and patient) family dance leader will make sure that everyone has a great time. Glen Echo Ballroom Annex. \$5 for ages 4 and older.





FSGW The Great American Square Dance Revival, Part XXXV!! • Washington, DC Saturday, February 14 • 8:30 – 11:30 pm

FSGW's DC Square Dance Collective presents another fabulous traditional Appalachian old-time square dance. **Ann Fallon** calls the figures to music by **Old Buck: Emily Schaad** (fiddle), **Riley Bagus** (banjo), **Debra Clifford** (guitar), and **Sabra Guzman** (bass). Come on down – all are welcome. Young and old, new and experienced, hipsters and outta-the-loopers. No partner, lessons, overalls, pointy-toed hand-tooled boots or fancy dress needed. St. Stephen's Church, 1525 Newton St, NW, near the Columbia Heights Metro. \$5 at the door. Info: dcSquareDance.com.



FSGW CO-SPONSORED DANCE EVENTS

Greenbelt Contra • Greenbelt, MD Saturday, February 7 • 7 – 9:45 pm

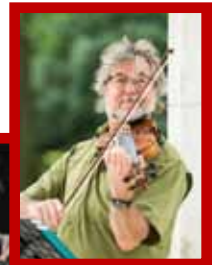
Ann Fallon will call to music by **Megan Beller** (fiddle) and **Charley Beller** (guitar). Beginner lesson at 6:30. Soft-soled, non-marking shoes, please. Greenbelt Community Center Gym, 15 Crescent Rd 20770. Co-sponsored by FSGW and the City of Greenbelt. Adults \$10, Age 7-18 \$5, 6 and under free. Info: **301-397-2208**.



Second Thursday Contra Dance in Silver Spring Free to First-Timers

THURSDAY, FEBRUARY 12 • 7:30–10 PM
(7–7:30PM INTRO WORKSHOP)

Janine Smith calls to music by **OMG (Paul Oorts, Alexander Mitchell, Ralph Gordon)**. Beginners workshop 7-7:30. Silver Spring Civic Bldg, Great Hall, One Veterans Plaza, 20910. Free parking in public lot across the street. \$10; \$8 for FSGW or BFMS members and Revels. \$5 students. Free for first-timers. Info: Busy Graham at **301-466-0183** or busygraham@gmail.com.



Presented by Carpe Diem Arts c/o Class Acts Arts -- in partnership with the Folklore Society of Greater Washington (FSGW), Silver Spring Town Center Inc. (SSTCi) and the Montgomery County Department of Recreation's "Be Active Montgomery" initiative.

Glen Echo International Folkdancers • MD THURSDAYS • 7:30–10:45 PM

See the listing under International Dances on page 17.

Concerts

CONCERT SERIES

BALDWIN'S STATION • SYKESVILLE, MD

7618 Main St. Accessible to people with disabilities. Info: 410-795-1041, www.uptownconcerts.com or uptownconcerts@gmail.com. 8 pm.

February

- 5 **Seamus Kennedy** -- Irish music. \$20
26 **Side by Side** – Doris Justis and Sean McGhee. \$18

BARNS AT WOLF TRAP • VIENNA, VA

1635 Trap Road, 22182. www.wolftrap.org.

February

- 7 **BeauSoleil avec Michael Doucet**, Cajun, \$27, 7:30 pm
13/14 **Solas**, Irish American, \$25-28, 8 pm
20/21 **Hapa**, Hawaiian, \$25-30, 7:30 pm

BIRCHMERE CONCERT HALL • ALEXANDRIA, VA

3701 Mt. Vernon Ave; 22305. All shows at 7:30 pm. Info: www.birchmere.com.

February

- 5 **Robert Cray Band**, blues. \$55
7/8 **Arlo Guthrie**, Alice's Restaurant 50th anniv. \$59.50
15 **Riders in the Sky**, salute to Roy Rogers. \$25
17 **Robert Earl Keen**, *Bluegrass Tour*. \$49.50
21 **Don McLean**, folk pop. \$55
25 **Keb' Mo'**, blues. \$69.50

THE CELLAR STAGE • BALTIMORE, MD

Faith Community United Methodist Church, 5315 Harford Rd 21214. Info: 410-521-9099 or www.uptownconcerts@gmail.com, www.uptownconcerts.com 8 pm.

February

- 13 **Bill Staines** with **Jessica Smucker** opening. \$21



FOCUS MUSIC SERIES

Information for all locations at focusmusic.org or call 703-501-6061.

FOCUS/DAN NAVARO ROCKVILLE, MD

TUESDAYS • 7 PM

Ted's 355 Diner, 895 Rockville Pike, Rockville, MD 20852; \$15 advance, \$18 door; info: David Spitzer, 301-340-0088 or focusmusic.org/venue_rockville.php.

February

- 3 **Scott Ainslie** + opener **Tom Dews** — blues
24 **Brooks Williams** + opener **Heather Styka**

LISA NULL is accepting a few new voice students: basic vocal techniques, coaching in traditional styles. Downtown Silver Spring. FREE mutual interview! enul@starpower.net or 301-587-2286

PHOTO ADVERTISEMENT

FOCUS CONCERT • ALEXANDRIA, VA

SATURDAY, FEBRUARY 14 • 7 PM

Joe Crookston plus **Andrea Pais**. Church of St. Clement, 1701 N Quaker La, 22302. \$15 advance, \$18 door. Info: Herb Cooper-Levy at 703-380-3151 or focusmusic.org/venue_alexandria.php

FOCUS CONCERT • FALLS CHURCH, VA

SATURDAY, FEBRUARY 28 • 7 PM

Kim and Reggie Harris. Celebration Center for Spiritual Living, 2849 Graham Rd, 22042. \$15 advance, \$18 door. Info: Judy Oliver at 703-869-0711 or focusmusic.org/venue_fallschurch.php.

GYPSEY SALLY'S • WASHINGTON, DC

Tuesdays at 8 pm, open mic in the Vinyl Lounge (upstairs). No cover. 3401 K St NW 20007 Info: gypsysallys.com

February

- 12 **The Hackensaw Boys**, *Grand Ole Ditch* opens. \$15-20; 8:30 pm
21 **The Larry Keel Experience**, bluegrass. \$15-17; 9 pm

THE HAMILTON • WASHINGTON DC

600 14th St NW 20005. Info: thehamiltondc.com

February

- 7 **Chubby Carrier**, zydeco dance, \$15-20, 8:30 pm
13 **Chatham County Line**, bluegrass, \$15-20, 8:30 pm
17 **Dirty Dozen Brass Band**, New Orleans, \$25-30, 7:30 pm

March 1

Dr. John plays Louis Armstrong, \$75-95, 7:30 pm

JAMMIN' JAVA • VIENNA, VA

227 Maple Ave, East 22180. Info: jamminjava.com

February

- 14 **The Nighthawks**, blues, \$20, 7 pm

MUSIC MATTERS SHOWCASE • COLUMBIA, MD

10801 Hickory Ridge Rd 20144. Free (donations for the homeless gratefully accepted). 6:30-9:30 pm Info: 410-964-8671 or madcitycoffee.com, www.josephisaacs.com.

February

- 7 **Dejon**, **Bob Brill**, **Kathy Stanley**
21 **Bucky Duster**, **Peggy Brennan**, **Scott Sivakoff**

WEEKEND BLUEGRASS SERIES • HERNDON, VA

Holy Cross Lutheran Church, 1090 Sterling Rd 20170. \$15, under 12 free. Info: Bob Thompson at 703-435-8377 or kd-4fue2@verizon.net, hclbluegrass.wordpress.com.

February

- 21 **The Clay Hess Band** – traditional and contemporary bluegrass.
28 **Bluetrain** – local veteran bluegrass musicians

INDIVIDUAL CONCERTS

(listed chronologically)

GEOFF KAUFMAN HOUSE CONCERT • SILVER SPRING, MD SATURDAY, FEBRUARY 7 • 7-9:30 PM

New England folk singer **Geoff Kaufman** brings his ditty bag of sea chanteys and ballads to 7915 Takoma Ave 20910. \$15. Info: Eliza Carney at [301-588-4728](tel:301-588-4728), or carney.eliza@gmail.com.

REVELS JUBILEE VOICES • SILVER SPRING, MD SUNDAY, FEBRUARY 8 • 4 PM

Traditional African-American songs and spoken word from the Civil War era. Songs will include shouts, hollers, code songs, signals, spirituals, field songs, and more. Spoken word from Frederick Douglass, Harriet Tubman, Paul Lawrence Dunbar, and others. Hear the songs and stories that helped lead a people from enslavement to freedom. Revels Space, 531 Dale Dr, 20910 Adults \$10, under 18 \$5. Info: revelsdc.org.

CARROLL CAFÉ: DOVETAIL ENSEMBLE • TAKOMA, DC FRIDAY, FEBRUARY 13 • 7:30 PM

Harmonica master **Phil Wiggins**, fiddler **Andrea Hoag**, guitarist **Mark Puryear**, and cellist **Jodi Beder**, with percussive

dancer **Agi Kovacs**—everything from traditional Swedish music to Latin jazz, Purcell to Mississippi John Hurt. Seekers Church, 276 Carroll St 20012, near the Takoma Metro stop. \$16 advance, \$20 door.

Info: Jesse Palidofsky, at [301-562-4147](tel:301-562-4147) or carrollcafe.org.



FOLK CLUB OF RESTON-HERNDON HERNDON, VA

TUESDAY, FEBRUARY 17 • 7:15 PM

Doug Everton and *The Hot Buttered Nuggets* – winners of more than 25 Wammie awards. Traditional American Roots music. Amphora Diner Deluxe, 1151 Elden St 20170. \$11 members/\$12 non-members. Open mic on other Tuesdays. Info: DAHurdSr@cs.com or restonherndonfolkclub.com.

333 COFFEEHOUSE • ANNAPOLIS, MD

FRIDAY, FEBRUARY 20 • 7:30 - 10 PM

333 presents *Calico Jenny*, featuring **Janie McNeely** with **Chelle Fulk** and **Molly Hickman** performing songs about Chesapeake Bay life and lore. Annapolis Friends Meeting, 351 DuBois Rd, 21401. \$12 general public, \$10 seniors, students, ATDS or FSGW members. Info: Tom Rhoads, [443-333-9613](tel:443-333-9613) or 333concerts.org.

Classes

SCANDINAVIAN DANCE CLASSES • BETHESDA, MD

TUESDAYS, FEBRUARY 3, 10, 17, 24

7:30 - 9:30 PM

Beginning and advanced dancers welcome. Learn Hambo, Schottis, Waltz, *Zwiefacher*, and other Swedish and Norwegian couple turning dances, including requests. Sometimes live music. Wear smooth-soled shoes (leather soles are best) for turning, not running shoes. \$5. First time free. Info: Lisa Brooks at [240-731-1935](tel:240-731-1935), lisa@HamboDC.org or www.HamboDC.org.

Directions: Enter NIH at Wisconsin Ave. and the Gateway Drive Visitor Entrance (south of South Dr., reachable ONLY from the north on Wisconsin Ave.). Park there, or drive to the south center of NIH and park in NIH permit parking next to Building T-39. Or walk 12 minutes from the Medical Center Metro stop. See map at www.HamboDC.org.

ADULT IRISH SET DANCE CLASSES • SILVER SPRING, MD

THURSDAYS, THROUGH MAY 7 • 7 - 9:30 PM

The Greater Washington Ceili Club offers Irish social dance lessons in a relaxed setting. No partner needed. 7-8 pm, basic steps and dances. 8-9:30 pm advanced dances. Third Thursday often a mini-ceili with live music. (1/15, 2/19, 3/19, 4/15, 5/7). Wear comfortable clothing and smooth-soled shoes. \$40/season, first class free. Argyle Park Activities Bldg,

1030 Forest Glen Rd, 20901. (Just outside the Beltway, Georgia Ave exit). Plentiful free parking. Info: Paul O'Donnell at [301-649-6410](tel:301-649-6410) or info@gwcconline.org.

WALTZ PRACTICUM • GREENBELT, MD

SUNDAY, FEBRUARY 8 • 2-4 PM

Waltz lovers, please join us for an open practicum at the Greenbelt Community Center Dance Studio. Mid-tempo waltzes (108-162 bpm) to recorded music. All waltz styles are welcome; eclecticism and fusion encouraged. Dance shoes mandatory; street shoes not permitted on dance floor. 15 Crescent Rd, 20770. \$5 suggested donation. Info: Elliott Drabek at [443-653-1468](tel:443-653-1468) or Elliott.drabek@gmail.com or tinyurl.com/waltz-practicum.

IRISH SOCIAL DANCE CLASSES • GAITHERSBURG, MD



TUESDAYS, THROUGH MAY 12 • 7-9 PM

The Ring of Kerry Irish Dancers teach Irish set and ceili dancing at Ridgeview Middle School, 16600 Raven Rock Dr, 20878. No partner, Irish heritage, or dance experience required, but bring a sense of humor and comfortable shoes. \$50 per person for the entire semester. Free class voucher available online. Info: Jean Woods at [301-253-4263](tel:301-253-4263) or jtmwoods@gmail.com or ringofkerrydancers.org.

February

SUNDAY	MONDAY	TUESDAY	WEDNESDAY
Don't forget!! The FSGW Midwinter Festival is Saturday			
1	2	3	4
10am Annapolis Jam 11 DC Bluegrass Union Jam 1pm Loud Rocking English Country Dance 3 Glen Echo Waltz 7:30 FSGW CONTRA DANCE PERRY SHAFRAN WITH DANCE DU JOUR	7 DC Bluegrass Union Jam 7:30 Bethesda Int'l Folk Dance 7:30 Arlington Morris Women 8 Balkan Singing 8 Sea Chanteys/ Wheaton 8 Baltimore English Country Dance 8 Bethesda Scottish Country Dance 	7 Chevy Chase Israeli Dance 7:15 Reston/Herndon Folk Club 8 Greenbelt Scottish Country Dance 8 Focus Concert, Rockville Scott Ainslie + Tom Dews	7:30 Rock Creek Morris Women 7:30 Arlington Jam 8 FSGW ENGLISH COUNTRY DANCE 8 Baltimore Contra Dance 8 Columbia Int'l Dance 8 Alexandria Scottish Country Dance 8 FSGW BOARD MEETING
8	9	10	11
10am Annapolis Jam 2 CABOMA Jam 3 FSGW FAMILY DANCE 4 Revels Jubilee Voices, Silver Spring, MD 4 FSGW GOSPEL SING 7:30 FSGW CONTRA DANCE NILS FREDLAND WITH MAIVISH NEWSLETTER DEADLINE!!	7:30 Bethesda Int'l Folk Dance 7:30 Arlington Morris Women 8 Balkan Singing 8 Baltimore English Country Dance 8 Bethesda Scottish Country Dance	7 Chevy Chase Israeli Dance 7:15 Reston/Herndon Folk Club 8 Greenbelt Scottish Country Dance	7:30 Rock Creek Morris Women 8 FSGW ENGLISH COUNTRY DANCE 8 Baltimore Contra Dance 8 Columbia Int'l Dance 8 Alexandria Scottish Country Dance 8 Sea Chantey/Baltimore
15	Presidents' Day 16	Mardi Gras 17	18
10am Annapolis Jam 3 Glen Echo Waltz 4 Sandy Spring Sacred Harp 7 Norwegian Dance 7:30 FSGW CONTRA DANCE RACHEL MCCANDLISS WITH LARRY UNGER & AUDREY KNUTH 	7 DC Bluegrass Union Jam 7:30 Bethesda Int'l Folk Dance 7:30 Arlington Morris Women 8 Balkan Singing 8 Baltimore English Country Dance 8 Bethesda Scottish Country Dance	7 DC Shape Note Sing 7 Chevy Chase Israeli Dance 7:15 Reston/Herndon Folk Club Doug Everton and <i>The Hot Buttered Nuggets</i> 8 Greenbelt Scottish Country Dance 	7:30 Arlington Jam 7:30 Rock Creek Morris Women 8 FSGW ENGLISH COUNTRY DANCE 8 Baltimore Contra Dance 8 Columbia Int'l Dance 8 Alexandria Scottish Country Dance 8 Sea Chanteys/Annapolis
22	23	24	25
10am Annapolis Jam 2 CABOMA Jam 3 Hot Society Dance Glen Echo 3 GWCC Monthly Ceili 4 Alpine Dancers 4 FSGW SHAPE NOTE SINGING 7:30 FSGW CONTRA DANCE JANINE SMITH WITH HAVE-A-HEART TRAPPERS FSGW ELECTION MEETING	7:30 Bethesda Int'l Folk Dance 7:30 Arlington Morris Women 8 Balkan Singing 8 Baltimore English Country Dance 8 Bethesda Scottish Country Dance	7 Chevy Chase Israeli Dance 7:15 Reston/Herndon Folk Club 8 Greenbelt Scottish Country Dance 8 Focus Concert, Rockville Brooks Williams + Heather Styka	7 Cajun Jam 7:30 Rock Creek Morris Women 8 FSGW ENGLISH COUNTRY DANCE 8 Baltimore Contra Dance 8 Columbia Int'l Dance 8 Alexandria Scottish Country Dance 8 Sea Chantey/Washington DC

2015

THURSDAY	FRIDAY	SATURDAY
Monday, February 7 - Noon to 10:30 pm		
5	6	7
6:30 Harrisonburg, VA Family Dance 7:30 Storytelling, Takoma Park, MD 7:30 GLEN ECHO INT'L DANCE 8 Baldwin's Station Concert Seamus Kennedy 8 Mt. Vernon Int'l Dance 8 Foggy Bottom Morris Men 8:15 Back Room Blues Dance	8:30 Greenbelt Int'l Folk Dance 8:30 Friday Night Contra Dance 8:30 FSGW OPEN SING	NOON – 10:30 PM FSGW MINI-FEST 1 Archie Edwards Blues Jam 6:30 Music Matters: Columbia, MD Dejon, Bob Brill, Kathy Stanley 7 Geoff Kaufman House Concert Silver Spring, MD 7 FSGW/GREENBELT, MD CONTRA DANCE 8 Shepherdstown, WV Contra Dance
 12	13	Valentine's Day 14
6 Front Royal, VA Family Dance 7:30 GLEN ECHO INT'L DANCE 7:30 FSGW SILVER SPRING CONTRA DANCE 8 Mt. Vernon Int'l Dance 8 Foggy Bottom Morris Men 8:15 Back Room Blues Dance	7:30 Carroll Café, Takoma DC <i>Dovetail Ensemble</i> 8 Cellar Stage Baltimore, MD Bill Staines w/ Jessica Smucker 8:30 Greenbelt Int'l Folk Dance 8:30 Friday Night Contra Dance with The Glen Echo Open Band	1 Archie Edwards Blues Jam 2 Baltimore Contra Dance 7 Focus Concert, Alexandria, VA Joe Crookston plus Andrea Pais 7 Jamn'n' Java: The Nighthawks 8 Silver Spring English Country Dance 8:30 FSGW DC SQUARE DANCE
19	20	 21
6:30 Harrisonburg, VA Family Dance 7:30 GLEN ECHO INT'L DANCE 7:30 Arlington Circle Dance 8 Wheaton Folksong Sing-In 8 Mt. Vernon Int'l Dance 8 Foggy Bottom Morris Men 8:15 Back Room Blues Dance	7:30 333 Coffeehouse, Annapolis, MD <i>Calico Jenny</i> 8:30 Greenbelt Int'l Folk Dance 8:30 Friday Night Contra Dance	1 Archie Edwards Blues Jam 6:30 Carpe Deim Community Sing 6:30 Music Matters, Columbia, MD Bucky Duster, Peggy Brennan Scott Sivakoff 7 Galesville, VA Community Dance 7 Annapolis, MD Contra Dance 7 Scandinavian Dance 7 Lancaster, PA Contra Dance 7:30 Leesburg Assembly English Country Dance (Great Falls, VA) 7:30 FSGW STORYSWAP 8 FSGW PROGRAM: ALEX CATON & PAT EGAN
26	27	28
6:30 Luray, VA Family Dance 7 Mt. Rainier Folk Hoot 7:30 GLEN ECHO INT'L DANCE 8 Baldwin's Station Concert <i>Side by Side</i> 8 Mt. Vernon Int'l Dance 8 Foggy Bottom Morris Men 8:15 Back Room Blues Dance	8:30 Greenbelt Int'l Folk Dance 8:30 Friday Night Contra Dance	1 Archie Edwards Blues Jam 1:30 Hammer Dulcimer Jam 7 Focus Concert, Falls Church, VA Kim & Reggie Harris 8 Frederick, MD Contra Dance

FSGW

Advance Notice

Sunday, March 15 • 3 pm
FSGW House Concert

ERIC & SUZY THOMPSON
Mount Lubentia (The Wallaces)
(Upper Marlboro, MD)

Sunday, April 12 • 3 pm
FSGW House Concert

MARTIN GROSSWENDT & SUZANNE SALEM-SCHATZ
Mount Lubentia (The Wallaces')
(Upper Marlboro, MD)

Friday, April 10, thru
Sunday, April 12

26TH ANNUAL
CHESAPEAKE DANCE
WEEKEND
CAMP LETTS, EDGEWATER, MD

Saturday, May 9 • 7:30 PM

FSGW's 29TH
ANNUAL WASHINGTON
SPRING BALL
Cherry Hill Conference Center
College Park, MD

Saturday, May 30, &
Sunday, May 31, 2015

35TH ANNUAL
WASHINGTON
FOLK FESTIVAL
GLEN ECHO PARK, MD

Friday, October 2, thru
Monday, October 5, 2015

51ST ANNUAL
FSGW GETAWAY
West River Conference Center
West River, MD



2015 MiniFest Performance Grid - Saturday, February 7, 2015

Time	Dance Tracks		Performance	Room 104 American Roots	Room 108 Traditional Song	Room 114 Matilda's Cafe	Room 118 Concerts / Workshops	Room 122 Storytelling	Jams		Lobby
	Aux Gym Dance	Main Gym Dance Workshops							Room 1&4	Room 1&4	
noon-1	Open Maltz Freely noon - 1	English Country Melissa Humming Trebemakers noon - 1	Glyn Collinson and Andrew Harcus noon - 1	Blue Moon Cowgirls noon - 1	Darriel Day, Rita Ferrara, Bill Day, & Jocelyn Winkler noon - 12:45 Riki Schreyer 12:45 - 1:15 Peter Brice 1:15 - 1:45 Martha Burns 1:45 - 2:15 Ballad Vision Bea Lehman, Melissa Weaver Dunning, Connie McKenna, Steve Winick, Charlie Baum 2:15 - 3:15 Oma Pearl 3:15 - 3:45 Betsy and Meara O'Malley 3:45 - 4:30 Don Tallone 4:30 - 5:00 Calico Jenny 5:00 - 5:30 Bob Clayton 5:30 - 6:00	Baywood the Band Folk rock - kazoo, glockenspiel & more noon - 1 Lulu's Fate Traditional Appalachian, guitar, mando, cello 1-2 DeJohn Debra & John Amen 2-3 Lee Morris and Matt Hoken Soulfolk - gospel, jazz, R&B 3-4 Zach Parkman & Friends Acoustic country, folk and blues 4-5 Barnyard Prophets Phil Fox & Severn Savage Harmonious humor 5-6	Scrub Pines noon - 1 Slaveya 1-2 Capital Accord Chorus 2-3 Doo Wop Flawn Williams 3-4 TBA The Squeezers 5-6	Tim Livegood 12-12:30 Something old, new Walter Jones, 12:30-1 Penelope Fleming 1-1:30 Come in from the Cold Twimbrook Tellers 1:30-2 Kids Tell Tales TBA 2-2:30 Gary Lloyd 2:30-3 Geraldine Buckley 3-3:30 Twimbrook Tellers 3:30-4 Kids Tell Tales 100 TBA 4-4:30 Jennifer Hine 4:30-5 Fabulous Folk Tales Michael Fleming 5-5:30 Audience!! Storyswap	Room 1&4 F&G Gospel Sing noon - 1 F&G Shape Note Singing (J.Strube) 1-2 Sea Chantneys (V.Hilding) 2-3 Morris Chorus 3:00 - 3:45 Archie's Barbershop Blues Jam 3:45 - 5:00 Irish Seisun 5-6		
1-2	Contra Shane Knudsen Trebemakers 1-2	Barn Dance Anni Fallon AP & Banty Boosters 1-2	Sligo Creek Hedge School 1-1:30 Moon Diggers 1:30-2	Gary Wright and Leah Weiss 1-2 Bruce Hutton, Chris Romaine & Bill Mansfield 2-3 Alan Jabbour 3-4 Orrin Star 4-5 Greg Adams 5-6							
2-3	Contra Anni Fallon Metronomes 2-3	Tango Workshop Tango Mercurio Orchestra 2-3	Shenandoah Run 2-2:45 Cooking With Gas 2:45-3:30 Kensington Depot 3:30-4								
3-4	Couples Dances Metronomes 3-4	Scandinavian Brooks/Kahn Melissa Humming 3-4									
4-5	Cajun Dances Cypress Trio 4-5	Flamenco Furia Flamenca 4-5	The Rogue Farmers 4-5								
5-6	Cajun Jam 5-6	Intro to Morris Dancing for Women Rock Creek Morris Women 5-6	Lyruti Chushki 5-6								
6-7:30	Load out Classrooms and crafts, 6-6:30; load out gym and Cafeterium 10:30-11 pm	Dinner Break									
7:30-10:30	Contra Dance 7:30 - 10:30	Concert 7:30-10:30									

All performances in the Cafeterium are concerts. Some classroom performances are concerts, others are workshops. Please check the grid for details.
Participatory music workshops are marked with . All dances in both gyms are participatory.
Information for performers: Green Room is Room 140 (11:30-5:30 pm); Secure Instrument Check is Room 102 (11:30 to 6pm).
The local (Takoma Park) Subway franchisee will sell subs, soup, muffins, cookies, soda, coffee, tea, and hot cocoa from noon to 7:30 in the Cafeterium.

Evening contra dance with the fabulous Glen Echo Open Band, and a cavalcade of local callers!
Evening concert: The Harley String Band, Dueto Dulcemelos, and the Capitol Hillbillies

Grid last updated: January 14, 2015 (5:33pm)

Dances

Note: The events listed here welcome all levels from beginners to experienced dancers. The dances are taught and walked through first, so no experience is required. Come and enjoy, with or without a partner!

COMMUNITY/FAMILY

FSGW Family Dance. Details on page 8

GALESVILLE COMMUNITY DANCE • GALESVILLE, MD
SATURDAY, FEBRUARY 21 • 7 - 10 PM

Squares, circles, longways and waltzes. Galesville Memorial Hall, 952 Galesville Rd, 20765. Optional potluck at 6, family dancing at 7, more challenging dancing at 8:30. **Janine Smith** calls to music by **Leah Weiss, Gary Wright** and friends – sit-ins welcome on fiddle, guitar, and clawhammer banjo. Adults \$10, age 5-17 \$5, under 5 free. Info: **301-926-9142** or **communitysquareddance.wordpress.com**.

HARRISONBURG FAMILY DANCE • HARRISONBURG, VA
FIRST AND THIRD THURSDAYS • 6:30- 8:30 PM

First Presbyterian Church, 17 Court Square 22802. Line, circle and square sets. Free and open to all. Info: **tommack1861@gmail.com** or **facebook.com/SVCWED**.

FRONT ROYAL FAMILY DANCE • FRONT ROYAL, VA
SECOND THURSDAYS • 6 - 7:30 PM

Samuel's Public Library, 330 East Criser Rd 22630. Line, circle and square sets. Free and open to all. Info: **tommack1861@gmail.com** or **facebook.com/SVCWED**.

LURAY FAMILY DANCE • LURAY, VA
FOURTH THURSDAYS • 6:30 - 8: 30 PM

Christ Episcopal Church, 16 Amiss Ave 22835. Line, circle and square sets. Free and open to all. Info: **tommack1861@gmail.com** or **facebook.com/SVCWED**.

BFMS FAMILY DANCE • PIKESVILLE, MD

No Family Dance in February 2015.

CELTIC/CEILI

GWCC CEILI • COLLEGE PARK, MD
SUNDAY, FEBRUARY 22 • 3 - 8 PM

The Greater Washington Ceili Club sponsors a 4th Sunday dance (Sept-May). Music by **Betsy O'Malley and Friends**. Limerick Tumblers workshop at 3. Ceili 4-8, with potluck dinner during the first break. Cherry Hill Park Conference Center, 9800 Cherry Hill Rd, 20740 (entrance code 76000). \$15 Members, \$20 Non-members. Ages 11-20 half price. Ages 10 and under free. Info: **301-512-4480** or **gwcc-online.org**.

CONTRA

Sundays

FSGW Sunday Night Dances. Details on page 7.

Wednesdays



BFMS CONTRA DANCE • BALTIMORE, MD
WEDNESDAYS • 8 - 10:30 PM

Beginners are always welcome. New-dancer workshops are held at 7:30 on the 2nd and 4th Wednesdays. Nationally-known musicians and callers appear regularly. Members \$9, non-members \$13, member/Non-member students with ID \$4/\$6. Lovely Lane Church, 2200 St. Paul St., 21218. Info: **bfms.org**.

February

- 4 Nils Fredland** calls to *Triple Helix* – **Colleen Reed** (flute, sax), **Keith Gillis** (guitar), and **Alexander Mitchell** (guitar)
- 11 Laura Brown** calls to *Old Time Jam Band*. New dancer workshop at 7:30.
- 18 Rachel McCandliss** calls to *Taylor Among the Devils* – **Marty Taylor** (whistles, concertina), **Steve Hickman** (fiddle), and **Jonathan Jensen** (piano).
- 25 Donna Hunt** calls to TBA. New dancer workshop at 7:30 pm.

Thursdays

2nd Thursday Contra • Silver Spring, MD
FSGW Co-sponsored Dance. Details on page 9

Fridays

FRIDAY NIGHT DANCERS • GLEN ECHO, MD
FRIDAYS • 8:30 - 11:30 PM



The Friday Night Dancers (in cooperation with the National Park Service, Montgomery County, and the Glen Echo Park Partnership for Arts and Culture) sponsor weekly contra dances to live music in the historic Glen Echo Spanish Ballroom (unless otherwise specified), at 7300 MacArthur Blvd, 20812. New dancer class every week from 7:30 to 8:15. \$10 for the lesson and dance. \$5 for age 17 and under. (Age 17 and under free on second Fridays.) Info: **FridayNightDance.org**, or **301-632-2222**, or the Friday Night Dance Facebook page.

February

- 6 Nils Fredland** calls to *Maivish*: **Jaige Trudel** (fiddle), **Adam Broome** (guitar), and **Matthew Olwell** (flute, percussion).
- 13** The fabulous *Glen Echo Open Band*; with caller **Rachel McCandliss**
- 20 Warren Doyle** calls to *Floor Play*: **Rya Martin** (piano), **Paul Rosen** (mandolin, fiddle), and **Aaron Lamb** (drums).

DANCES CONTINUED

27 **Ted Hodapp** calls to *Contratopia: Erik Sessions* (fiddle), **Patrice Pakiz** (piano, oboe, percussion), **Pat O'Loughlin** (banjo, concertina) and **John Goodin** (mandolin, guitar).

Saturdays

SMAD CONTRA DANCE • SHEPHERDSTOWN, WV

SATURDAY, FEBRUARY 7 • 8–11 PM

This month, **Hilton Baxter** calls to the *Black Oranges*. Beginners workshop at 7:30. All levels welcome, no partner needed. Please wear clean, soft-soled shoes to protect the floor. Dance is at the Shepherdstown War Memorial Building, German and King Sts, 25443. Members, \$10 Non-members, \$5 under 12. Info: Becky at **304-876-2169** or smad.us.

BFMS CONTRA DANCE • PIKEVILLE, MD

SATURDAY, FEBRUARY 14 • 2–11 PM



BFMS presents the 5th annual Chocolate and Valentine Extravaganza. Swing Dance workshop at 2, couple dancing at 3:15. Advanced contra at 4:30. Potluck at 6:30. Dessert contest from 9:15 to 9:45. This month, **Rachel McCandliss** calls to music by **Audrey Knuth** (fiddle) and **Larry Unger** (guitar). St. Mark's on the Hill, 1620 Reisterstown Rd, 21208. \$25 Members, \$29 Non-members. Under 21 full-time students with ID \$10 members, \$15 Non-members. See website for additional information about partial day admission. Info: **Becca Dennison** at **301-606-7115**, or satdance@bfms.org or BFMS.org or BFMS hotline **888-646-BFMS**.

LANCASTER CONTRA • LANCASTER, PA

SATURDAY, FEBRUARY 21 • 7–10 PM

Adina Gordon calls to *Coracree: Jane Rothfield* (fiddle), **Bill Quern** (banjo, mandolin), **Sarah Gowan** (guitar, concertina), and **Allan Carr** (guitar, bass). St. John's Episcopal Church, 321 W Chestnut St, 17603. Beginners workshop at 6:15. \$9 Adults, \$6 Students. Age 15 and under free. Info: Karen at **717-951-4317** or lancastercontra.org.

ATDS CONTRA • ANNAPOLIS, MD

SATURDAY, FEBRUARY 21 • 7–10 PM

Perry Shafran will call contras to the mesmerizing music of *Strings on Wings* (**Barb Schmit** on fiddle and **Todd Clewell** on guitar). Free introductory lesson at 6:30. All ages welcome, no experience or partner necessary. All dances taught and walked through. Snacks to share at the break are welcome. Annapolis Friends Meeting House, 351 DuBois Rd, 21401 \$10, with discounts for seniors, students, families, and ATDS Members. Info: Jan Scopel at **443-540-0867** or janscope@hotmail.com; Ann Fallon at **410-268-0231** or aefallon@verizon.net, or contradancers.com/atds.

FREDERICK CONTRA • FREDERICK, MD

SATURDAY, FEBRUARY 28 • 8–11 PM

Perry Shafran calls to *Triple Helix: Colleen Reed* (flute), **Alexander Mitchell** (fiddle), and **Keith Gillis** (guitar). Bring a snack to share at the break. Trinity School, 6040 New Design Rd (near Harry Grove Stadium), 21703. \$10; students with ID \$5. Info: Boe Walker at **301-694-6794**, or contradancers.com.

ENGLISH COUNTRY

Mondays

BALTIMORE FOLK MUSIC SOCIETY • PIKEVILLE, MD

MONDAYS • 8–10:30 PM



All dances are taught and walked through. New dancer orientation first Monday at 7:45. Admission \$8 Members, \$11 Non-members, \$2 student discount. St. Mark's on the Hill Parish Hall, 1620 Reisterstown Rd, 21208. Info: Carl Friedman at **410.321.8419** or engdance@bfms.org.

February

- 2 New Dancer orientation (free) at 7:45. **Carl Friedman** calls to **Tina Chancey** (violin), **David Crandall** (winds), and **Jonathan Jensen** (piano).
- 9 **Sharon McKinley** calls to **Jeff Steinberg** (violin), **Brian Cardall** (winds) and **Mark Vidor** (accordion).
- 16 **Susan Taylor** calls to **Heather Martley** (flute), **Paul Oorts** (strings, accordion), and **Laurie Andres** (piano).
- 23 **Diane Schmit** calls to **Barbara Gorin** (violin), **Robin Wilson** (flute, concertina), and **Judy Meyers** (piano).

Wednesdays

FSGW English Country Dance. Details on page 8.

Saturdays

SILVER SPRING ECD • SILVER SPRING, MD

SATURDAY, FEBRUARY 14 • 8 PM

Dance to music by *Peascods Gathering* with calling by **Bob Farrall**. Beginners and singles welcome. \$5. Glen Haven Elementary School, 10900 Inwood Ave 20902. Parking and entrance at rear of school. Info: Carl Minkus at **301-493-6281** or cminkus@verizon.net, or Bob Farrall at **301-577-5018**.

LEESBURG ASSEMBLY • GREAT FALLS, VA

SATURDAY, FEBRUARY 21 • 7:30–10:30 PM

Shake off winter blahs with English Country dancing! All dances taught and called to live music. **Susan Taylor** calls to music by **Chelle Fulk** and **Barbara Heitz**. St. Francis Episcopal Church Hall, 9220 Georgetown Pike 22066 – 4.7 miles west of the Beltway. \$10. Info: David Pacelli at **703-757-8648** or www.thelessburgassembly.org.

*Sundays***LOUD ROCKING ECD • ADELPHI, MD**
SUNDAY, FEBRUARY 1 • 1 - 5 PM

Join us for a wild afternoon of elegant dances called by **Melissa Running** and lovely music played in ridiculous ways by **Giant Robot Dance!!** Stately Baroque piano combines with electric guitar and dueling trombones. Float, bop, and boogie around the beautiful sprung wood floor at Ballroom Blum, 8300 Osage Ter 20783. Two sessions, \$10 each. 1-2:45 and 3:15 to 5. Info/directions: **301-422-0292**.

INTERNATIONAL**ALPINE DANCERS • NEW CARROLLTON, MD**
SUNDAY, FEBRUARY 22 • 4 - 6:30 PM

Alpine Dancers perform and teach folk dance, specializing in graceful and lively couple and trio dances from Austria, Germany and Switzerland. Always looking for energetic beginners. Free open practice at New Carrollton Municipal Center, 6016 Princess Garden Pkwy, 20784. Info: Carol Traxler at **301-577-3503** or caroltraxler@yahoo.com, or alpinedancers.org.

*Mondays***DIAMOND DANCE CIRCLE • BETHESDA, MD**
MONDAYS • 7:30 - 10 PM

Come join our friendly group and learn dances from all over the world. Beginners 7:30-8, intermediate / advanced 8-10 (requests from 9:15-10). No partner needed. Adults over 16 please. Mostly recorded music, wonderful wood floor. Jane Lawton Community Center, 4301 Willow Lane, Bethesda 20815.

Info: Phyllis or Brandon Diamond, **301-871-8788**, diamondDanceCircle.com or diamondDanceCircle@comcast.net.

*Wednesdays***COLUMBIA FOLK DANCERS • COLUMBIA, MD**
WEDNESDAYS • 8 - 10:30 PM

We meet at Kahler Hall in Columbia, Village of Harpers Choice. Class at 8, dancing starts at 8:30. Requests taken throughout the evening. \$5 (\$3 for seniors). Info: Ethel at **410-997-1613**, Ed at **410-740-2309**, or columbiafolkdancers.org.

*Thursdays***GLEN ECHO INTERNATIONAL FOLK • BETHESDA, MD**
THURSDAYS • 7:30 - 10:45 PM

Church of the Redeemer, 6201 Dunrobbin Dr (near the intersection of Goldsboro and MacArthur). Lesson at 7:30, Request dances from 9 to 10:45. Mostly recorded music. No partner or experience necessary. Wear comfortable clothing

Send all Newsletter submissions to: newsletter@fsgw.org

and soft-soled shoes. Co-sponsored by FSGW. \$5 Info: Jamie at **301-466-3018** or dancingplanet@erols.com.

CIRCLE DANCE • ARLINGTON, VA**3RD AND 5TH THURSDAYS (19TH ONLY) • 7:30 - 9:30**

Come and explore dances from all over the world in a spirit of mediation and joy. All dances taught. Recorded music. Unitarian Universalist Church of Arlington, Rte 50 at George Mason Dr, 4444 Arlington Blvd, 22204. Donation requested. Info: Ann Ulmschneider at **703-528-5114** or aulmsch@msn.com.

MT. VERNON FOLK DANCERS • ALEXANDRIA, VA
THURSDAYS • 8 - 10 PM

Join our friendly, diverse group on a beautiful dance floor; no partner necessary. Beginners and experienced dancers welcome. Easy dances 8 - 8:30, followed by a mix of easy, advanced instruction, and requests. Mt. Vernon Unitarian Church, 1909 Windmill Lane, 22307. Donation \$4. Info: Patricia at **703-472-3888** or pdw@patriciadaywilliams.com.

*Fridays***GREENBELT FOLK DANCING • GREENBELT, MD**
FRIDAYS • 8:30 - 10:45 PM

We focus on dance from Eastern Europe and Scandinavia. No partner or experience necessary. Beautiful dance floor. Teaching from 8:30 to 9:15, request from 9:15 on. Live music on first Fridays. Greenbelt Comm. Cntr Studio, 15 Crescent Rd, 20770. First Fridays, \$12; other Fridays \$7. Students and seniors half price except first Fridays. Info: Larry Weiner at **301-565-0539** or larry@larryweiner.com, or larryweiner.com/FridayDance.htm

ISRAELI**ISRAELI DANCING • CHEVY CHASE, MD**
TUESDAYS • 7 - 10:30 PM

Instruction from 7 to 7:45. We focus on building a repertoire of both classic and newer Israeli dances in a friendly, welcoming atmosphere. Recorded music. Light refreshments served. Ohr Kodesh Congregation, 8300 Meadowbrook Ln, 20815. \$8 adults, \$6 students. Info: Mike Fox at **240-424-0805** or markidmike.com, or markidmike@gmail.com.

MORRIS**ARLINGTON NORTHWEST MORRIS WOMEN**
MONDAYS • 7:30 - 9 PM

Learn and perform the traditional morris dances of Northwest England, which combine simple footwork with power and precision. We are a welcoming group of women who practice in a great place with a wooden floor (easier on your knees)

DANCES CONTINUED

at the Unitarian Universalist Church of Arlington, Arlington Blvd at George Mason Dr. Info: suzelise@comcast.net or nwdancers@comcast.net

ROCK CREEK MORRIS WOMEN
WEDNESDAYS • 7:30 - 9:45 PM

Learn to dance in the ancient English morris tradition, and you'll get all the aerobics you need. Join a strong community that dances, plays, sings, and drinks together. Montgomery Knolls Elementary School, 807 Daleview Dr. Info: Louise Neu at **301-927-6373** or louiseneu@earthlink.net or uswet.com/RCMW.html.

FOGGY BOTTOM MORRIS MEN
THURSDAYS • 8 - 10 PM

Experience the vigorous thrill of the morris and the camaraderie of a morris team! Learn and perform dances from English Cotswold villages, mummers' plays and occasional long-sword dances. We welcome new and slightly used dancers to our practices at Knock on Wood Tap Studio, 6925 Willow St, NW, Washington DC and/or at the pub afterwards. Info: Alan Peel at **301-920-1912** or squire@fbmm.org or fbmm.org.

SCANDINAVIAN

NORWEGIAN DANCE & POTLUCK • SILVER SPRING, MD
SUNDAY, FEBRUARY 15
POTLUCK 5:30 PM • DANCE 7 PM

Norwegian-style house party. Mesmerizing live music by **Loretta Kelley** on the unique Hardanger fiddle (sympathetic strings under bowed strings – see HFAA.org). Addictive dances, some with Swing or hambo elements. Beginners, singles, couples, watchers, listeners – everyone is welcome. Bring clean shoes to wear, food to share, cash you can spare. 6807 Westmoreland Ave 20912. Host phone 301-270-4925. Info: Jenny at **301-371-4312**, or pi@xecu.net, or MAND.fanitull.org

SCANDIA DC DANCE • GREENBELT, MD
SATURDAY, FEBRUARY 21 • 7-10 PM

Scandia DC sponsors a 3rd Saturday dance. This month live fiddle music by **Andrea Hoag**, a well-known local treasure, and **Scandia DC Spelmansslag**. No partners necessary. There may be some recorded music. Teaching from 7-8: Boda Polska, a popular Swedish dance. Greenbelt Community Center Dance Studio (wood floor), 15 Crescent Rd, 20770. \$10. Inclement weather cancellation 310.474.0646. Info: Linda at **202-333-2826**, linda@scandiadc.org, or www.scandiadc.org.

If you don't dance, you are wasting your feet!



SCOTTISH

See rscds-greaterdc.org for all Scottish dance listings.

BETHESDA SCOTTISH COUNTRY DANCE
MONDAYS • 8 - 10 PM

NIH Building T-39 (Dance and Aerobic Center). #5 Call or email in advance for directions. Info: John MacLeod at **301-622-5945** or blackolav@gmail.com.

GREENBELT SCOTTISH COUNTRY DANCE
TUESDAYS • 8 - 10 PM

Dance all year 'round at the Greenbelt Community Center. \$8. Info: Jay Andrews at **703-719-0596** or andrewj@rcn.com.

ALEXANDRIA SCOTTISH COUNTRY DANCE
WEDNESDAYS • 8-9:45 PM

Learn Scottish dance at the Durant Center, 1605 Cameron St, Alexandria 22314. \$5 Info: elanyi@cox.net.

SWING/BLUES

BACK ROOM BLUES • GLEN ECHO, MD
THURSDAYS • 8:15 - 11:30 PM

Popular weekly blues dance in the "Back Room" at the Spanish Ballroom, Glen Echo Park, 7300 MacArthur Blvd, 20812. Sprung wood floor. Come early, as it is selling out. Beginner lesson from 8:15 to 9. DJ Mike Marcotte and guests play blues from 9 to 11:30. Info: Donna Barker at **301-634-2231** or CapitalBlues.org.

WALTZ/COUPLES DANCING

AFTERNOON WALTZ • GLEN ECHO, MD

A lively mix of folk waltzes with other couples dances, including hambo, swing, tango, and polka. Beginner lesson from 2:45 to 3:30. No partner required. Glen Echo Spanish Ballroom, 7300 MacArthur Blvd, 20812. \$10. Info: WaltzTimeDances.org or **301-634-2222**.

February

- 1 **Trio Con Brio:** Paul Oorts, Elke Baker, Jonathan Jensen
- 15 **Audacious:** Larry Unger, Audrey Knuth, & Paul Oorts

HOT SOCIETY DANCE • GLEN ECHO, MD
SUNDAY, FEBRUARY 22 • 3-6 PM

The Hot Society Orchestra of Washington plays music from the 20s, 30s and 40s. Foxtrot, two-step, waltz, cha cha, rumba, swing and more. No partner or experience necessary. Foxtrot lesson at 3 pm. Glen Echo Spanish Ballroom, 7300 MacArthur Blvd, 20812. \$15. Info: Dave Tucker at **703-861-8218** or glenecopark.org or hotsociety.net.

Jams/Open Mics/Audience Participation

Sundays

ACOUSTIC JAM • ANNAPOLIS, MD

SUNDAYS • 10 AM - 12:30 PM

Indoors at the Visitor Center, Quiet Waters Park. Info: ken.i.mayer@gmail.com.

DC BLUEGRASS UNION DUPONT CIRCLE JAM WASHINGTON DC

1ST SUNDAYS • 11 AM – 2 PM

The Mansion, 2020 O St., NW, 20036. Accessible on Metro Red Line. Info: Mike Marceau at mikemarceau@juno.com. Info on venue: omansion.com.

CABOMA JAM • ANNANDALE, VA

2ND AND 4TH SUNDAYS • 2 PM

Capitol Area Bluegrass and Old-Time Music Association holds jams at Marantha Baptist Church, 311 Annandale Road, 22003. Info: Don at **703-522-1696**.

SACRED HARP SINGING • SANDY SPRING, MD

3RD SUNDAYS • 4-6 PM

Singing is followed by a potluck supper. Location is a small schoolhouse behind the Community Building, 17801 Meetinghouse Rd, about 10 miles west of Laurel. Info: Dave Greene at **301-50-3283** or dgreene@all-systems.com to confirm.

Mondays

BALKAN SINGING • TAKOMA PARK, MD

MONDAYS • 8 PM

Informal singing group, *Sedenka*, meets in to sing Balkan village songs. Interested novices welcome. Info: Katya at **301-270-4175** or Katya@partan.com

SEA CHANTEY OPEN PUB SING • WHEATON, MD

1ST MONDAYS • 8-10 PM

The Ship's Company chanteymen host open-mike sea-chantey sings. No cover/minimum; arrive early for a table. Participation encouraged but not mandatory. Requests honored if possible. Mostly a *cappella* but instruments are welcome. Info: Myron Peterson at ructic@yahoo.com or ShipsCompany.org.

February

2 The Limerick Pub 11301 Elkin St., 20902

DC BLUEGRASS UNION VFW JAM • TAKOMA PARK, MD

1ST AND 3RD MONDAYS • 7-10 PM

Free. Non-smoking. At Veterans of Foreign Wars Post 350, 6420 Orchard Ave (corner of 4th Ave), 20912, near New
Send all Newsletter submissions to: newsletter@fsgw.org

Hampshire and Eastern Aves. Info: Barb Diederich at **301-633-2504** or barb@barbdiederich.com

Tuesdays



RESTON/HERNDON FOLK CLUB HERNDON, VA

TUESDAYS • 7:15 PM

At Amphora Diner Deluxe, 1151 Elden St, 2010. Open mic format. Doors open at 6. Second Tuesday includes 25-minute member showcase. Third Tuesday often features monthly concerts, price varies.

Info: **703-435-2402** or RestonHerndonFolkClub.com.

DC SHAPE NOTE SING • WASHINGTON, DC

3RD TUESDAY • 7 - 9 PM

We sing from both *The Sacred Harp* and *Shenandoah Harmony*. Loaners available and books for sale. Everyone is welcome to bring snacks and friends. We look forward to singing with you. Capitol Hill Presbyterian Church, 201 4th St, SE, Washington, DC. Enter side door, left of the main steps. Street parking is possible; church is a 10-minute walk from Capitol South and Eastern Market Metro stations, or a 20-minute walk from Union Station. Info: **540-955-2660** or **DC Shape Note Singers** on Face book.

OLD-TIME JAM • BALTIMORE, MD

ALTERNATE TUESDAYS • 7:30 - 10:30 PM

Ken and Brad Kolodner lead the Baltimore Old-Time Jam at Liam Flynn's, 222 W. North Ave. Info: KenAndBrad.com, KenKolodner.com or BradKolodner.com.

Wednesdays

SEA CHANTEY OPEN PUB SING • 3 LOCATIONS

2ND, 3RD, AND 4TH WEDNESDAYS • 8 - 10 PM

The Ship's Company chanteymen host open mic chantey sings. Participation encouraged but not mandatory. Requests honored if possible. Info: Myron Peterson at ructic@yahoo.com or ShipsCompany.org,

February

11 Wharf Rat, 801 S Anne St (Fell's Pt) Baltimore 21231

18 Galway Bay, 63 Maryland Ave, Annapolis 21401

25 Laughing Man Tavern, 1306 G St, NW, Washington DC 20005

BANJO LESSONS Old-Time & Bluegrass w/Don Rusnak. 50+ yrs. Exp. Near Ballston Metro, Arlington, VA. Banjos bought/sold/traded/repared. **703-522-1696**. BanjoDaddy@hotmail.com

JAMS/OPEN MICS/AUDIENCE PARTICIPATION CONTINUED

ARLINGTON JAM! • ARLINGTON, VA**1ST AND 3RD WEDNESDAYS • 7:30–10 PM**

Strings (bowed, plucked or hammered), winds, free reeds: all instruments welcome! Intermediate and advanced players interested in old-time, blues, Scandinavian, swing, and other styles. If you sight-read: music provided! 1909 N. Ohio St. Info: Lilli Vincenz at **703-532-2731** or Fiddler-Lilli@verizon.net; or Steve Woodbury at **703-425-5943** or woodburybauer@verizon.net.

CAJUN JAM • GREENBELT, MD**4TH WEDNESDAYS • 7–9 PM**

Monthly open Cajun jam and dance. New Deal Café, 113 Centerway, Roosevelt Ctr. Info: **301-474-5642** or newdealcafe.com. Check website to confirm.

*Thursdays***FOLKSONG SING-IN • WHEATON, MD****3RD THURSDAYS • 8–10 PM**

Join local musician **Brad Howard** every month for this musical gathering. Everyone gets a chance to lead the room in song. Bring your favorite folk tunes, your voice, and even your instruments for a great evening of song and pub-style fellowship. The Limerick Pub, at the corner of Elkin and Price, 11301 Elkin St. Venue Info: thelimerickpub.net.

FOLK HOOT! • MT. RANIER, MD**4TH THURSDAYS • 7–9 PM**

Bruce Hutton hosts a traditional folk music open mic at the Urban Eats Art and Music Café, 3311 Rhode Island Ave. Info: Bruce Hutton at **301-802-7669**, or [facebook.com/urban eatsmd](https://www.facebook.com/urban eatsmd).

*Fridays***GLEN ECHO OPEN BAND • GLEN ECHO, MD****2ND FRIDAYS • 8:30–11:30 PM**

The fabulous *Glen Echo Open Band* plays for the second-Friday contra dance. All instruments and levels of ability are welcome. Find recordings, tunebook names and page numbers of tunes played by the Open Band at OpenBandOnline.com. The site works best using iTunes on a PC or a Mac. Info: FridayNightDance.org.

*Saturdays***ARCHIE EDWARDS BLUES JAM • RIVERDALE, MD****SATURDAYS • 1–5 PM**

Acoustic instruments, all skill levels and listeners welcome. 4701 Queensbury Rd, across from the Riverdale MARC train station. Ample parking. Free, but donations welcome. Info/confirmation: **301-396-3054** or acousticblues.com.

COMMUNITY SING • SILVER SPRING, MD**FEBRUARY 21 • 6:30–8:45 PM**

Revels and Carpe Diem sponsor a sing on the 21st of each month. All ages welcome. No experience necessary. Bring refreshments and songs to share if you wish. February's theme is Valentines and Songs of Hope and Freedom in the blues, gospel, and spiritual tradition. Free. Revels Studio Space, 531 Dale Dr, 20910. Info: Busy Graham at **301-466-0183** or BusyGraham@gmail.com.

HAMMERED DULCIMER JAM • MCLEAN, VA**FEBRUARY 28 • 1:30–4:30 PM**

Hammered dulcimer players of all levels meet monthly to swap tunes and play together; other acoustic instruments welcome. Dolley Madison Library, 1244 Oak Ridge Ave. Info: **703-356-0770** or eholsop@gmail.com, or google.com/site/nvhddplayers.



**GREENWAY
VIOLINS**

Vintage and Contemporary
Repairs and Bow Rehairing
Friendly Service • Great Pricing
www.greenwayviolins.com 703-405-6230



Storytelling

THE GRAPEVINE • TAKOMA PARK, MD

THURSDAY, FEBRUARY 5 • 7:30-8:30 PM

Old-fashioned storytelling with stories of all kinds: truth, myth, and everything else. For adults (occasional language and themes). Hosted by **Noa Baum**, with featured tellers **Judith Black** and **Ellouise Schoettler**. Takoma Park Community Center, 7500 Maple Avenue. Suggested donation \$10 per person. Info: Tim Livengood at **443-535-3185** or timaltales@verizon.net



Workshops, Weekends, Festivals & Special Events

DANCE MUSICIANS WORKSHOP • BETHESDA, MD

TUESDAYS, FEBRUARY 3-24 • 7-9 PM

Sponsored by the Friday Night Dancers, this four-week workshop is open to all musicians who want to make people think, "Gotta dance!" Repertoire, learning by ear, arranging, etc. Tired of practicing alone? Join us! Off Old Georgetown Road, just north of the Beltway. \$40. Info: Leslie Barr at **301-346-7037** or lbarr604@gmail.com.

TEDDY BEARS' PICNIC • COLLEGE PARK, MD

SATURDAY, FEBRUARY 14 • 3 PM

Celebrate a Valentine themed Teddy Bears' picnic with your favorite stuffed animal. Stories, stinging, picnic and parade (indoors!) At Old Parish House, 4711 Knox Road 20740 (corner of Knox and Dartmouth, one block from College Park Metro). Info: College Park Arts Exchange, www.cpaee.org.

DR. SEUSS'S BIRTHDAY CELEBRATION • COLLEGE PARK, MD

SATURDAY, FEBRUARY 28 • 10 AM

Celebrate the amazing stories of Dr. Seuss with books read aloud, puppets, art projects, and treats! College Park Community Library, in the Nazarene Church, 9704 Rhode Island Avenue. Info: College Park Arts Exchange, www.cpaee.org.

SCOTTISH COUNTRY DANCING CAPITAL WEEKEND COLLEGE PARK, MD

FRIDAY-SUNDAY, MARCH 27- 29, 2015

Teacher: David Queen from Lancashire, UK. Music: *Terpsichore* with Elke Baker, Liz Donaldson, and Ralph Gordon. At Cherry Hill Convention Park, 9800 Cherry Hill Rd. Info: Sally-Beth Buckner, 301-564-0097, rscds-greaterdc.org/events



**FSGW's CHESAPEAKE
DANCE WEEKEND
EDGEWATER, MD**

**FRIDAY - SUNDAY,
APRIL 10-12, 2015**



FSGW celebrates CDW's 33rd anniversary at beautiful Camp Letts. Adina Gordon will call dances old and new to wildly fun and adventurous tunes by The Great Bear Trio. Phil Jamison, up from beautiful North Carolina, will call squares and more to authentic Appalachian music by *The Corn Potato String Band*, and Matthew Duvencek and Anna Gilbert will instruct dancers in waltz and tango, with music by *Fiddlemuse*.



**DC
BLUEGRASS
Festival**
**Friday & Saturday
February 27/28, 2015**

Jerry Douglas Presents
The Earls of Leicester
The Seldom Scene, Tim O'Brien
Blue Highway, Sierra Hull
The Bankesters, The Grass Cats
Gold Heart, Bluestone
Get ticket info here: www.dcbbluegrassfest.org

**Sheraton Tysons
Hotel**
8661 Leesburg Pike · Tysons
Corner, VA 22182

Book Today!
Call 888-627-8230
Mention 'Bluegrass Festival
2015' for special rates!

Info: ChesapeakeDanceWeekend.org or fsgw.org.

SPRING BANJO RALLY • BOILING SPRINGS, PA FRIDAY - SUNDAY, MAY 21-23, 2015

The American Banjo Fraternity sponsors this event, devoted to post-minstrel, nylon-string five-string banjo music as played in the late 19th and early 20th century. Venue is the ground level of the Meadow Lodge, Allenberry Resort, 1559 Boiling Springs Rd. Venue info: **800-430-5468**. Info: banjofraternity.org

AN ENGLISH TRIFLE • HIGH POINT, WV SATURDAY - MONDAY, MAY 23-25, 2015

Want to do something special over Memorial Day weekend, but hate fighting Friday night traffic? This new dance weekend features the wonderful callers and musicians from the Great-

er Washington English Dance community. Lots of ECD, plus workshops in Dutch Crossing, 16-person quadrille, and more. Tea bag exchange (bring that box you've never opened). At Timber Ridge Camp. Info: Kappy Lanning at kappylan@aol.com, or April Blum at quatriemme@aol.com.

TRADMAD * PLYMOUTH, MA SATURDAY - FRIDAY, AUGUST 29 TO SEPTEMBER 4, 2015

Six days of workshops, dances, concerts, one-shots, camper concerts, jamming, singing, swimming, relaxing, learning, and generally having fun! We have an incredible staff lined up and the setting is beautiful Pinewoods Camp near Cape Cod. Price for FSGW Members is \$725 per adult. Some scholarships will be available. See the TradMaD camp website for details.

35th Annual FSGW Washington Folk Festival Call for Volunteers



For over three decades, the Folklore Society of Greater Washington has produced the FSGW Washington Folk Festival at historic Glen Echo Park. This free rain-or-shine event is a celebration of the many cultural traditions that are a part of our community. Just in the last few years the FSGW WFF has presented music and dance from India, Mongolia, North Africa, Ireland, Scotland, France, Israel, Brazil, Bulgaria, Guatemala, Iran, Turkey, Japan, and Spain. This year's event, **May 30-31, noon to 7 pm** both days, will again provide a rich smorgasbord of international culture along with American blues, bluegrass, old-time string bands, contemporary singer-songwriters, gospel, western swing, storytellers, craft demonstrations and more. With seven event areas and over 85 hours of performances, there will be something for everyone at the FSGW Washington Folk Festival.

In order to produce this event, FSGW relies on an army of volunteers. Many have volunteered for decades, but new volunteers are needed each year. A few of hours of your time can help make the FSGW WFF possible. We need help not only during the performance weekend but on other weekends in May and June to help with set-up, strike, and load-out. To volunteer: Go to www.washingtonfolkfestival.org and fill out an on-line volunteer form.

The FSGW WFF particularly needs people who want to get involved in planning and management – people who can move into the many staff roles that make the FSGW Washington Folk Festival happen. These include volunteer coordination, publicity, web page design, database management, fund raising, food preparation, stage hands, and general management. If you have experience, or would like to develop skills in any of these areas, we would love to hear from you. If you are interested in exploring a staff role, please send an email to dwainfest@aol.com. or call **Dwain Winters** at **301-526-8558**.



Website Woes


You may have noticed that on November 17, the FSGW website was unresponsive, as the result of a cyber attack. The initial damage report was quite dire, but fortunately FSGW was able to restore functionality and lost only a few days of data. However the attack made it clear that FSGW's system was vulnerable, and a decision to switch to a commercially available Content Management System (CMS) with enhanced security features and 24/7 tech support could no longer be postponed.

Over the next several months, FSGW will be testing a new support system for membership data (including newsletter mailings and, we hope, electronic balloting), for FSGW's events calendar (including an archive of past events), and for a redesigned web page, one which we hope will better reflect FSGW's vibrant and lively community.

WE NEED YOUR HELP!

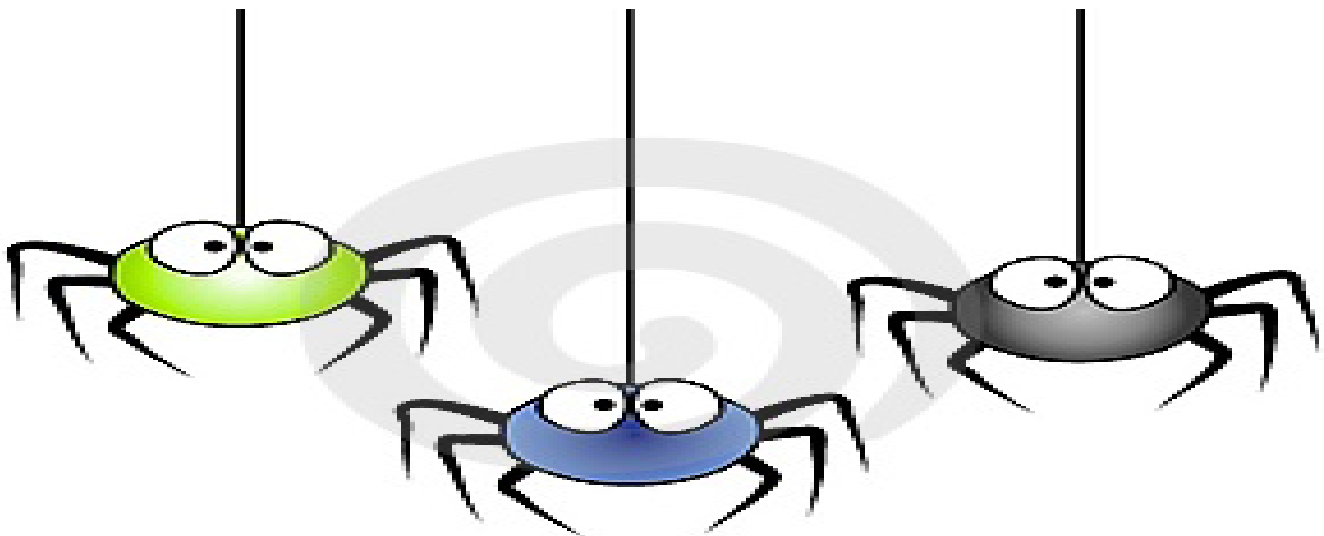
First and foremost: We will need accurate email addresses for all members in order to transfer membership information from the current system to the new system. Our records indicate that we do not have an email address for over 450 of you. Please go to fsgw.org, log in, and check the information in your Directory listing. Be sure it is complete and accurate, particularly your email address. If you have trouble logging in, email me at president@fsgw.org. We urgently need to generate a "clean" set of data for the trial migration in the very near future.

Second: We need experts. Do you have IT skills? Would you be willing to help? Email me at president@fsgw.org if you might be interested in helping us with the transition.

Third: We need a scalable logo – one that can be reduced to a one-quarter inch wide image on a mobile device and still be recognizable. Send us your ideas. We would very much like to have a logo designed by an FSGW member! If there are several good designs, we will ask the entire FSGW membership to make the choice. It is, after all, your society. 

Fourth: A reminder about opting for electronic newsletters and ballots. Paper newsletters have become more and more expensive, and eventually wind up in the round file (although we hope you recycle). Please consider requesting the electronic version only – but note that this request must now be made by email. Similarly, paper ballots require special paper and first class mailing – each ballot costs FSGW about a dollar. And most of them aren't even returned. Please consider changing your preferences to electronic voting, which significantly reduces FSGW's costs (but make sure your email address is correct and current).

— April Blum, President, FSGW





P.O. Box 323
Cabin John, MD 20818

PRESORTED
FIRST CLASS MAIL
US POSTAGE PAID
ROCKVILLE, MD
PERMIT #4297

www.fsgw.org

Printed on recycled paper.

Address Service Requested

 **FIRST CLASS**

The Folklore Society of Greater Washington is a not-for-profit [Section 501(c)(3) of the IRS code] institution, and we encourage the financial contributions of our members. Contributions in excess of annual dues are welcome and may be tax-deductible. Please mail your gift to FSGW, P.O. Box 323, Cabin John, MD 20818. Subscriptions to the Newsletter are available only outside the Greater Washington Metro area.

FSGW IS DEDICATED TO PRESERVING AND PROMOTING TRADITIONAL FOLK ARTS IN THE WASHINGTON, D.C., METROPOLITAN AREA. MEMBERSHIP IS OPEN TO ALL WHO SUPPORT THESE GOALS UPON PAYMENT OF DUES.

FSGW Membership Form

New Membership Renewal Change of Address

Type	Individual Electronic Newsletter	Individual Paper Newsletter	Family Electronic Newsletter	Family Paper Newsletter
1 Year	<input type="checkbox"/> \$33	<input type="checkbox"/> \$33+ \$6	<input type="checkbox"/> \$45	<input type="checkbox"/> \$45 + \$6
2 Years	<input type="checkbox"/> \$62	<input type="checkbox"/> \$62+ \$12	<input type="checkbox"/> \$85	<input type="checkbox"/> \$85 + \$12
3 Years	<input type="checkbox"/> \$91	<input type="checkbox"/> \$91+ \$18	<input type="checkbox"/> \$125	<input type="checkbox"/> \$125 + \$18
Lifetime	\$550 (no charge for paper)		\$800 (no charge for paper)	
Student	<input type="checkbox"/> \$25	Student membership is electronic newsletter only.		
Paper	<input type="checkbox"/> \$25	Paper newsletter memberships are only for those outside of the Greater Washington area. The subscription includes no member privileges.		

Name 1 _____
(Principal contact for membership, ballots, etc.)

Additional Names _____
(Family memberships only)

Address _____

City _____ State _____ Zip _____

Name 1: H: _____ - _____ - _____ W: _____ - _____ - _____

Cell: _____ - _____ - _____ Other: _____ - _____ - _____

E-mail: _____ @ _____

May we list you in our Membership Directory? FSGW does not provide mailing lists to any other organizations.

Yes No

Yes, but do not list my: _____



Send form and check made payable to FSGW to:
FSGW Membership • FSGW, c/o M. Burnett, 10001 Boreland Ct., Bristow, VA 20136