



NEWSLETTER

Volume 51, Number 7

fsgw.org

March 2015

March Program

Glen Echo Town Hall, MD

Mike Agranoff

American Troubadour

Saturday, March 21, 8 pm

What kind of music does **Mike Agranoff** play? Oh, everything. He likes to call himself a "singer-songfinder." Expect to be amazed, to laugh, to be touched, to sing along and generally be entertained. From traditional ballads and dance tunes to recitations, to Tin Pan Alley and more recent songs to folk favorites and parodies, Mike has an immense repertoire. His latest CD (*Straight Lines*) includes songs about trains, Stephen Foster, pot, comic books and cereal; composers include Gus Kahn, Joni Mitchell, J.S. Bach, Steve Goodman, Michael Smith, Jean Ritchie, the Berrymans, Stan Rogers, and, oh yeah, Mike Agranoff.

Tall, thin and bearded, Mike is known at venues and festivals mostly in the eastern US, with an occasional foray into the Midwest and the UK. He has also attended the FSGW Getaway a time or three. Wherever he goes, he keeps an ear out for new material – or better, for old material. Known for fine fingerstyle guitar picking, he usually includes some concertina, and has been known to play Joplin on the piano, should one be available.

Not only a performer, Mike is involved in presenting folk music as well, being one of the prime movers of The Folk Project, New Jersey's oldest and strongest folk music organization. For more than two decades he has been chairman of that organization's Minstrel Coffeehouse, one of the longest-lived and most respected folk venues in the country.

So with all the festivals he's worked and performers he's presented, and songs he's learned, adapted and sung, we thought we'd do a little interview during the concert, probably after the intermission. And since Mary Cliff isn't working that Saturday night, she's agreed to ask the questions.

Join us at **Glen Echo Town Hall, 6106 Harvard Ave., Glen Echo MD. General admission is \$15; free to members.** For a preview, see Mike's website, <http://mikeagranoff.com/videos.php>.

Please do not park on Harvard Avenue in the Town Hall block, out of consideration for the Town Hall's neighbors. Please park down on University Avenue, or on the other side of MacArthur Blvd, being careful not to block driveways.



INSIDE:

FSGW

Ad policy	23
Advance Notices.....	13
Board Meeting Highlights.....	8
Board Members/Meeting	23
Calendar	12-13
Co-sponsored Dances	6
Editorial Policy	6
English Country Dances	4
Family Dance	4
Great American Square Dance	6
House Concert	
Suzy & Eric Thompson	3
Sings & Storytelling	9
Sunday Night Dances	5
Washington Folk Festival	8

Non-FSGW Events

Concerts	10
Classes.....	14
Dances.....	15
Jams/Open Mics/Sings.....	19
Storytelling.....	21
Workshops/Festivals/Weekends	22



CLIFF HANGER

Mary Cliff's folk music program *Traditions*, decades old and much cherished, was abruptly cut from WAMU's Bluegrass Country (BGC) at the end of January. It wasn't her idea. Radio is complicated.

Traditions was the successor to DC-area folk music programming that began with Dick Cerri on WAVA about 1960. Mary had worked with Dick at other stations, so when Dick's show *Folk Weekend* became part of the new WETA radio schedule in 1970, he suggested that WETA bring Mary aboard. She learned her trade there – announcing, programming, writing, engineering. In 1973, when Dick left, she was assigned to folk music, and she was part of WETA for more than thirty years. When WETA dropped all non-classical music from its programming (2007), WAMU brought *Traditions* over from WETA to augment its schedule. On WAMU, *Traditions* aired right after *Hot Jazz Saturday Night*. A few months later, WAMU even augmented the *Traditions* broadcast with additional Saturday afternoon hours on WAMU's low-power sister station, BGC. Then, a year and a half ago, *Traditions* lost its place on the WAMU schedule and was heard only on BGC.

WAMU says the current changes were made, "to provide a more consistent format and sound, reflecting both a national and local 'sense of place.' We will replace four local shows with shows from our archives. This will help us align our content with our mission, better serve our listeners, and manage our expenses. Beginning March 2nd, we're retiring *The Chris Teskey Show*, *Traditions*, *Free for All*, and *Capital Americana*." Here's a little background on the other programs cut from the schedule: Chris Teskey was Senior Producer and supervisor, with a daily bluegrass show plus a Saturday evening Celtic hour; Echo Propp hosted BGC's first Americana show, *Free for All*, from Nashville in recent years; Jen Hitt ran BGC when it began and has been hosting *Capital Americana* from Austin.

Over the last few years, BGC had been expanding its music choices. With the current cuts, it seems to be narrowing them – except when it isn't. Why is it that only the folk music that *Traditions* celebrated and embraced has completely disappeared, while Celtic, zydeco, old-time, Americana, and world music continue on other shows?

Mary has her music library and is open to another broadcast home – because nobody else around DC is serving this community. Some think that "folk" is just "acoustic" or "that 60s stuff," but she'll be glad to show you that it's a broad-based cultural treasure. And she plans to maintain the "Who's Where" list on her web (www.marycliff.net) for the foreseeable future.



Mini-Fest, Maxi-Thanks

The 2015 edition of the FSGW Mini Fest was a delight. Three hundred performers filled the classrooms, hallways, and stage with imaginative and lively music, dance and storytelling. Special thanks to:

Programmers **Charlie Baum, April Blum, Martha Burns, Matilda Gawf, Tim Livengood, Lisa Null, and Judy Oppenheim.**

Sound technicians **Joel Bluestein, Tom Bryson, Eric Cole, Dan Kahn, Jamie Platt, Al Taylor, and John Wells.**

Crafts coordinator **Ingrid Gorman** and the many craftspeople.

Photographer **Steve Tuttle.**

Volunteers – more than 50 of them, who took tickets, helped out in the Green Room, set up chairs and loaded all of the sound equipment in and out.

The mighty-wall-of-sound **MiniFest Destiny Open Band.**

The custodial staff of the Takoma Park Middle School.

FSGW House Concert

Largo, MD



Eric and Suzy Thompson

*Sunday, March 15 * 3 pm*

Two legendary mainstays of Berkeley, California's vibrant traditional music scene are coming East! **Eric and Suzy Thompson** are virtuoso performers of American roots music: old time Appalachian ballads and break-downs, classic blues and jug band songs, bluegrass hot licks, and Louisiana Cajun dance music.

Eric's flatpicking on guitar and mandolin is exceptional for its purity of tone, speed, and soulfulness. As a pioneer lead flatpicker, he has worked with **Jerry Garcia, David Nelson, David Grisman**, and **Kleptograss**, an all-star string band with **Jody Stecher** and **Scott Nygaard**. During the 80s he expanded his musical horizons to include Cajun, Puerto Rican, Irish, Greek and a host of other traditional musical styles. His recording credits are a Who's Who of notable grassroots musicians. Suzy's musical credentials are similarly impressive. She is a powerful blues singer and an award-winning fiddler who apprenticed with older Louisiana Cajun musicians under an NEA Fellowship. She is the Artistic Director of Port Townsend's "Festival of American Fiddle Tunes."

Eric and Suzy were founding members of many influential roots music groups including the **Black Mountain Boys, Any Old Time** and the **California Cajun Orchestra**. They have worked with **Jerry Garcia, Maria Muldaur, David Grisman, Jim Kweskin & Geoff Muldaur, Darol Anger, Laurie Lewis & Tom Rozum, Dave Alvin, Ginny Hawker & Tracy Schwarz, Country Joe McDonald**, the **Savoy Doucet Cajun Trio**, and other notable roots musicians. Eric and Suzy have appeared on a slew of recordings, both together and separately as members of great groups. They'll have a choice selection of recordings available at the concert.

For reservations and directions to Sondra and Andy Wallace's home in Largo, email andy.sondra@verizon.net, or call **301-324-7311**. Reservations are required, as space is limited. Suggested donation \$15.

FSGW Board Elections

FSGW could not offer the hundreds of concerts, dances, festivals and other events each year without the many Society members who volunteer to make it all happen. The FSGW Board of Directors is recruiting Board members through our annual election process for a one-year term beginning on July 1. If you're ready to give back to an organization that provides so much, please consider running for the Board.

The Election Committee invites you to nominate candidates for the 2015–2016 Board. The Committee is compiling a slate of candidates for the May election. You may offer your nominations for the FSGW Board at the Monthly Program on March 21, and at the Sunday contra dance on March 22. These events are official Folklore Society meetings for the purpose of receiving nominations for the Board from the membership. Nominations may also be submitted directly to the Election Committee (prior to March 30) by petition signed by five current FSGW Members. You can contact the Election Committee at elections@fsgw.org.

FSGW DANCE EVENTS

FSGW English Country Dances

Glen Echo, MD • Wednesdays • 8–10:30 pm

Dance on a wood floor in the climate-controlled community room of the **Glen Echo Town Hall, 6106 Harvard St., 20812**. Bring clean, non-scuffing shoes for dancing. Cheerful, patient, talented callers are accompanied by top-notch musicians—every Wednesday a different and delightful mix of instruments, including piano, fiddle, flute, oboe, concertina, bassoon, cello, viola, and recorder. Light refreshments served at the break. Experienced and new dancers welcome. No partner required. **Info: Stephanie Smith 301-229-3577 or Roger Broseus English@fsgw.org**

Admission: \$10 for FSGW members, \$12 for non-members.

March

4

Tom Spilsbury and Laura Schultz call while **Chelle Fulk** (fiddle), **Colleen Reed** (flute), and **Liz Donaldson** (piano) play the tunes.



18

Melissa Running leads the dances to the playing of **Becky Ross** (fiddle), **Carrie Rose** (flute), and **Liz Donaldson** (piano).



11

Dan Gillespie calls to the music of **Susan Brandt** (flute), **Ralph Gordon** (cello), and **Francine Krasowska** (piano).



25

Joseph Pimentel calls while **Tina Chancey** (fiddle), **Anna Rain** (recorders), and **Melissa Running** (piano) play the tunes.



FSGW FAMILY DANCE • GLEN ECHO, MD

SUNDAY, MARCH 8 • 3 - 5 PM



The FSGW Family Dance is a great shared activity for all ages and all types of celebrations. This month, **Graham DeZarn and Friends** return to keep the dancers bouncing with calling by **Eric Maring**. Make it part of a very special birthday party, or use it as a Brownie or Cub Scout outing. No experience necessary – just come on out and dance – an experienced (and patient) family dance leader will make sure that everyone has a great time. Glen Echo Ballroom Annex. \$5 for ages 4 and older.



FSGW sponsors events that are intended to foster a pleasant environment and a tolerant community, and to provide a comfortable experience for all.

FSGW SUNDAY NIGHT DANCES

AT GLEN ECHO PARK, MD

CONTRAS AND SQUARES · 7:30-10:30 PM

INTRODUCTORY LESSON EVERY SUNDAY · 7-7:30 PM

Join us for an evening of dancing at Glen Echo Park. Every Sunday FSGW (in cooperation with the National Park Service, Montgomery County, and the Glen Echo Park Partnership for Arts and Culture) presents contras and squares danced to live music by fabulous bands with entertaining callers. Experienced and new dancers welcome; no partner needed. **Welcome/Orientation session every Sunday at 7. Come early for an introduction to the basic moves.** Dances often become more challenging as the evening progresses. In March all the Sunday Night Dances are in the Spanish Ballroom. Bring water or a sports drink, and dress in layers. Smooth-soled shoes are kindest on your knees and ankles when turning. Info: **Penelope Weinberger** or **Steve Burnett**; dance@fsgw.org

Admission: \$10 for FSGW, BFMS, CDSS, and ATDS Members

\$5 youth (with student ID if over 17)

\$13 for the general public

March

- 1 Cajun, zydeco, clogging, contra, waltz, rapper sword – Ted can do it all!! **Ted Hodapp** calls with **Contratopia: Erik Sessions** (fiddle), **Patrice Pakiz** (piano, oboe, percussion), **Pat O'Loughlin** (English concertina, banjo), and **John Goodin** (mandolin, guitar). These fine musicians bring a little bit of Minnesota and Iowa to Glen Echo (Glen Minio?).
- 8 **Sue Rosen** comes to the Sunday Night Dance from Massachusetts to call a dance with renowned fiddler **Graham DeZarn** and **Bruce Rosen** on piano and guitar.
- 15 **Maia McCormick**, from New York, calls with **Coracree: Jane Rothfield** (fiddle), **Sarah Gowan** (guitar, foot percussion), **Allan Carr** (bass), and **Bill Quern** (banjo, mandolin, melodeon, harmonica) as they meld a mixture of traditional Celtic, old-time, European and original music, all played with an improvisational twist.
- 22 **Free to FSGW Members.** One of our favorite callers – **Will Mentor** – with an inimitable trio of musicians who share their love of playing and exploring great tunes – **The Stringrays: Rodney Miller** (fiddle), **Max Newman** (guitar), and **Stuart Kenney** (bass). There will be a brief FSGW meeting at the break.
- 29 Exotic Canadian callers with excellent local musicians! **Tom Calwell** and **Myra Hirschberg** will bring fine figures to the mighty fine tunes of **The Love Mongrels: Orrin Star** (mandolin, banjo, guitar), **Alexander Mitchell** (fiddle), and **Keith Carr** (cittern).



SPECIAL CHALLENGING CONTRAS AND SQUARES

SUNDAY, MARCH 22 · 3 - 6 PM

Will Mentor and **The Stringrays** will put on a dance for experienced lovers of contras, squares, and whatever other adventurous terpsichorean delights they can think of. Join FSGW for this afternoon special dance (**\$10 FSGW members and affiliates, \$13 non-members**) and stay for the Free to FSGW Members dance in the evening.

FSGW THE GREAT AMERICAN SQUARE DANCE REVIVAL, PART XXXVII!! WASHINGTON, DC



SATURDAY, MARCH 14 · 8:30 - 11:30 PM

FSGW's DC Square Dance Collective presents another fabulous traditional Appalachian old-time square dance. **Michael Ismerio** calls the figures to music by **Brian Vollmer** (fiddle), **Brent Feito** (banjo), and **Kevin Enoch** (bass). Come on down – all are welcome. Young and old, new and experienced, hipsters and outta-the-loopers. No partner, lessons, overalls, pointy-toed hand-tooled boots or fancy dress needed. St. Stephen's Church, 1525 Newton St NW, 20010, near the Columbia Heights Metro. \$5 at the door. Info: dcSquareDance.com.

FSGW CO-SPONSORED DANCE EVENTS

GREENBELT CONTRA · GREENBELT, MD

SATURDAY, APRIL 4 · 7 - 9:45 PM

No dance in March. Greenbelt Community Cntr Gym, 15 Crescent Rd, 20770. Co-sponsored by FSGW and the City of Greenbelt. Adults \$10, Age 7-18 \$5, 6 and under free. Info: **301-397-2208**.

SECOND THURSDAY CONTRA DANCE IN SILVER SPRING

THURSDAY, MARCH 12 · 7:30-10 PM

FREE TO FIRST-TIMERS · NEW DANCER WORKSHOP 7-7:30pm



Maia McCormick calls to music by **Callithump: Glyn Collinson, Andrew Marcus, and David Knight**.

Beginners workshop 7-7:30. Silver Spring Civic Bldg, Great Hall, One Veterans Plaza, 20910. Free parking in public lot across the street. \$10; \$8 for FSGW, BFMS and Revels. \$5 students. First time free. Info: Busy Graham at **301-466-0183** or busygraham@gmail.com.



Presented by Carpe Diem Arts c/o Class Acts Arts -- in partnership with the Folklore Society of Greater Washington (FSGW), Silver Spring Town Center Inc. (SSTCi) and the Montgomery County Department of Recreation's "Be Active Montgomery" initiative.

GLEN ECHO INTERNATIONAL FOLKDANCERS · MD

THURSDAYS · 7:30-10:45 PM

See the listing under International Dances on page 17.

Washington Spring Ball



Saturday, May 9, 2015

*Cherry Hill Park Conference Center
9800 Cherry Hill Road, College Park, MD*



Music by: Waverly Station

Liz Donaldson, Ralph Gordon, and David Knight

Practice Session: 2:30 - 5 pm • Potluck Dinner: 5:15 - 6:30 pm • Dance: 7:30 - 11 pm

The Program

*Carolina Farewell
Charlene's Celebration
Childgrove
Halsway Manners
Hambleton's Round-O
Jack's Health
La Gavre
Leather Lake House
Marching to Praetorius*



*Miss de Jersey's Memorial
Mount Hills
Old Bachelor
Rebecca Ridinghoode
Sam's Maggot
Treasure of the Big Woods
Waterfall Waltz
Waterlilies
Whiskey before Dinner*

Ticket prices:

*Prior to April 25 FSGW or affiliate member, \$33 Non-member, \$38 Student, half-price
After April 25 FSGW or affiliate member, \$40 Non-member, \$45 Student, half-price*

Takoma Park Folk Festival • Sunday, September 20 Applications Being Accepted

The 38th Takoma Park Folk Festival will be held on Sunday, September 20, 2015. Information about the Festival is available at www.tpff.org, where performers and volunteers can find application forms. The application deadline for performers is April 18.

Craft Show applications will be posted in mid-March; if you would like one sent to you, please e-mail crafts@tpff.org

35th Annual FSGW Washington Folk Festival Call for Volunteers



For over three decades, the Folklore Society of Greater Washington has produced the FSGW Washington Folk Festival at historic Glen Echo Park. This free rain-or-shine event is a celebration of the many cultural traditions that are a part of our community. Just in the last few years the FSGW WFF has presented music and dance from India, Mongolia, North Africa, Ireland, Scotland, France, Israel, Brazil, Bulgaria, Guatemala, Iran, Turkey, Japan, and Spain. This year's event, **May 30-31, noon to 7 pm** both days, will again provide a rich smorgasbord of international culture along with American blues, bluegrass, old-time string bands, contemporary singer-songwriters, gospel, western swing, storytellers, craft demonstrations and more. With seven event areas and over 85 hours of performances, there will be something for everyone at the FSGW Washington Folk Festival.

In order to produce this event, FSGW relies on an army of volunteers. Many have volunteered for decades, but new volunteers are needed each year. A few of hours of your time can help make the FSGW WFF possible. We need help not only during the performance weekend but on other weekends in May and June to help with set-up, strike, and load-out. To volunteer: Go to www.washingtonfolkfestival.org and fill out an on-line volunteer form.

The FSGW WFF particularly needs people who want to get involved in planning and management – people who can move into the many staff roles that make the FSGW Washington Folk Festival happen. These include volunteer

coordination, publicity, web page design, database management, fund raising, food preparation, stage hands, and general management. If you have experience, or would like to develop skills in any of these areas, we would love to hear from you. If you are interested in exploring a staff role, please send an email to dwainfest@aol.com. or call **Dwain Winters** at **301-526-8558**.



FEBRUARY 2015 BOARD MEETING HIGHLIGHTS

- **Will Strang** and **Lynn Baumeister** have been evaluating potential website and membership management systems for FSGW.
- The Washington Ethical Society has requested that those attending concerts park only on 16th Street, and not on the side streets near the WES auditorium.
- The Board passed two resolutions of appreciation:
 - The Board thanks **Sandy Aubin** for his service as FSGW Web Administrator, and appreciates the many hours of time he has devoted to FSGW affairs.
 - Will Strang** has been a mainstay of FSGW Web Administration and the Board thanks him for tireless support, as well as his willingness to handle the many technical demands of the acquisition, testing, and installation of a new Content Management System.
- FSGW will pursue scheduling outreach concerts at nursing homes and/or assisted living facilities with appropriate meeting spaces.

FSGW Sings/Swaps/Events

FSGW OPEN SING • EDGEWATER, MD

SATURDAY, MARCH 7 • 4- 8 PM

NOTE SPECIAL DAY OF THE WEEK AND TIME. There will be a potluck supper "between rounds." Bring a dish to share. The March FSGW Open Sing will be hosted by **Michele and Denny Callaghan**. Theme: "Hop, Skip and a Jump." Everyone welcome. Most songs presented from memory, but cheat sheets often appear. Don't worry if you can't think of a song on topic – come anyway! Contact Michele at callagh@verizon.net.

FSGW GOSPEL SING • CHEVY CHASE, DC

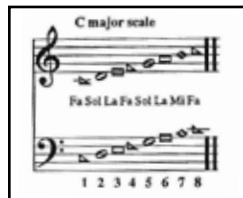
SUNDAY, MARCH 8 • 4 - 8 PM

FSGW Gospel Sings are held on second Sundays at various homes. Singing starts at 4 pm and breaks for a covered-dish supper at 6 pm, with more singing after supper. Everyone is welcome! This month's Sing will be at the home of **Rick Morgan and Arlene Rodenbeck** in Chevy Chase. Info: **202-364-3663**.

FSGW STORYSWAP • COLUMBIA, MD

SATURDAY, MARCH 21 • 7:30 - 10 PM

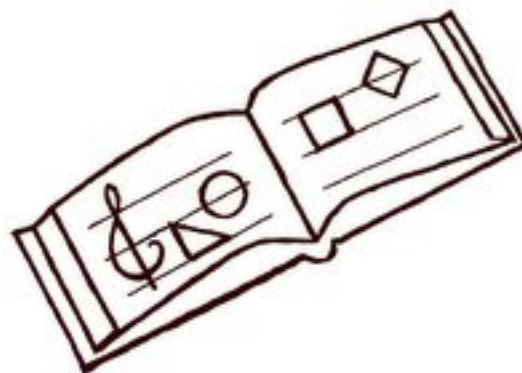
Storytellers of all levels, and listeners, too, are invited to the home of **Margaret Chatham** for an evening of shared stories and potluck snacks. Free. For RSVPs and directions, call **703-698-5456** or email Margaret.Chatham@verizon.net.



FSGW SHAPE NOTE SINGING ALEXANDRIA, VA

SUNDAY, MARCH 22 • 4-8 PM

Every fourth Sunday the shape note tradition comes alive with four-part harmony from *The Sacred Harp* (1991), *Shenandoah Harmony* (2013), and *Christian Harmony* (1959) fueled by a potluck supper. Loaner books are available, and all are welcome. Usually the singing is upstairs (Room 19) and the potluck on the ground level of the Fellowship Hall of the First Christian Church of Alexandria, 2723 King St, 22302, about a mile from the Metro and Amtrak stations and GW Memorial. Info: Mary Ann Daly at **301-229-8534**, or madaly@verizon.net.



26TH ANNUAL POTOMAC RIVER SACRED HARP CONVENTION

APRIL 11TH AND 12TH, 2015



THE GREAT FALLS GRANGE
9818 GEORGETOWN PIKE (ROUTE 193)
GREAT FALLS, VIRGINIA



Schedule

Saturday, April 11, 10 am-3:30 pm: All-Day singing from *The Sacred Harp* with a midday break for dinner. Please bring a dish to share.

Sunday, April 12, 10 am-3:30 pm, All-Day singing from *The Shenandoah Harmony* with a midday break for dinner. Please bring a dish to share.

The convention is free and open to the public. All are welcome and no experience is required. Copies of *The Sacred Harp* (1991 Edition) and *The Shenandoah Harmony* (2013 Edition) will be available to borrow or purchase.

Contact Nora Miller at norarose@gmail.com for more information; or Joni Seidenstein at hummingjoni@gmail.com for housing. If you'd like to assist on either day, please contact Nora or Kelly (jdelle@visuallink.com)

Shape note singing is an American *a cappella* tradition with roots in the Colonial period. Characterized by open harmonies and a powerful sound, shape note singing is music designed primarily for participation, rather than for performance.

For more information about *The Sacred Harp*, *The Shenandoah Harmony*, or shape note singing, visit <http://www.fasola.org/> or www.shenadoahharmony.com

Concerts

BALDWIN'S STATION • SYKESVILLE, MD

7618 Main St, 21784. Handicap accessible. Info: **410-795-1041**, www.uptownconcerts.com or uptownconcerts@gmail.com. 8 pm.

March

- 4** *The Kennedys* — folk-rock duo. \$20
26 *Joan & Joni* – Kipyn Martin and Alison Shapira – music of Joan Baez and Joni Mitchell. \$18

BARNS AT WOLF TRAP • VIENNA, VA

1635 Trap Rd, 22182. Info: www.wolftrap.org

March

- 5** *Austin Lounge Lizards*, satire, \$25-27, 8 pm
7 *Vatsala Mehra*, Sufi-inspired vocals, \$50, 8 pm
11 *Buckwheat Zydeco*, dance party, \$28, 8 pm
20 *Enter the Haggis*, Celtic rock, \$28, 8 pm
29-31 *Art Garfunkel*, folk-pop, \$75, 8 pm

BIRCHMERE CONCERT HALL • ALEXANDRIA, VA

3701 Mt. Vernon Ave., 22305. All shows at 7:30 pm. Info: www.birchmere.com

March

- 4/5** *Gaelic Storm*, Celtic, \$35
12 *Leo Kottke*, legendary guitarist, \$39.50
21 *Tom Rush*, folk and blues legend, \$39.50
22 *Regina Carter*, Southern tunes on fiddle, \$39.50

THE CELLAR STAGE • BALTIMORE, MD

Faith Community United Methodist Church, 5315 Harford Rd., 21214. Info: www.uptownconcerts@gmail.com, or www.uptownconcerts.com, or **410-521-9099**. 8 pm.

March

- 20** *Mustard's Retreat* – musical storytelling. \$21

FOCUS MUSIC SERIES

Information for locations at focusmusic.org or **703-501-6061**.



FOCUS CONCERT • MOUNT VERNON, VA SATURDAY, MARCH 7 • 7 PM

Peter Mayer plus **Doug Alan Wilcox**. Folk/rock, jazz and blues blend. St. Aidan's Episcopal Church, 8531 Riverside Rd, 22308. \$15 adv., \$18 door.

FOCUS CONCERT • ROCKVILLE, MD TUESDAY, MARCH 10 • 7 PM

Karen Oliver and **Marshall Artz**. Ted's 355 Diner, 895 Rockville Pk, 20852. \$15 adv., \$18 door.

FOCUS CONCERT • ALEXANDRIA, VA SATURDAY, MARCH 14 • 7 PM

John Flynn and **Susan Greenbaum**. Singer songwriters. Church of St. Clement, 1701 N Quaker Ln, 22302. \$15 advance, \$18 door.

GYPSY SALLY'S • WASHINGTON, DC

3401 K St NW, 20007 Info: gypsysallys.com

March

- 6** *Town Mountain + Tuckahoe Ridge*, bluegrass, \$12-15, 9 pm
7 *Dry Mill Road + The Hello Stringers*, bluegrass, \$12-15, 9 pm
26 *Nora Jane Struthers / Party Line + Humming House*, Americana, \$15-18; 8:30 pm

THE HAMILTON • WASHINGTON, DC

600 14th St NW, 20005. Info: thehamiltondc.com
Sundays at 10 am and 12:30 pm, gospel brunch \$45

March

- 1** *Dr. John* plays Louis Armstrong, \$75-95, 7:30 pm
3 *Jimmie Vaughan + Jonny Grave*, blues, \$30-40, 7:30 pm
13 *The Lone Bellow + Odessa*, Americana, \$25-30, 8:30 pm
20/21 *Rebirth Brass Band*, New Orleans, \$37-42, 8:30 pm
26 *Horsefeathers*, Oregon indie folk, \$15-23, 7:30 pm



INSTITUTE OF MUSICAL TRADITIONS

Information regarding locations at **301-960-3655** or imtfolk.org. All tickets at both locations are General Admission.

3 BANJOS, NO WAITING! • ROCKVILLE, MD

MONDAY, MARCH 16 • 7:30 PM

Tony Trischka, **Brad Kolodner** and **Keith Carr**, banjo virtuosos in bluegrass, old-time, and Irish styles. St. Mark Presbyterian Church, 10701 Old Georgetown Rd, 20852. \$15 adv, \$20 door. Students \$12 adv, \$17 door.

LE BRUIT COURT DANS LA VILLE • TAKOMA, DC

THURSDAY, MARCH 26 • 7:30 PM

Lisa Ornstein, **Normand Miron** and **André Marchand** – traditional Québécois roots music. CD Release party. Seekers Church, 276 Carroll St NW, 20012. \$15 adv, \$20 door. Students \$12 adv, \$17 door.

JAMMIN' JAVA • VIENNA, VA

227 Maple Ave, East 22180. Info: jamminjava.com

March

- 7** *Yale University All-Cello Rock Ensemble*, \$15, 2 pm



CONCERTS continued

OLD BROGUE WINTER CONCERTS • GREAT FALLS, VA SUNDAYS AT 4 AND 6 PM.

Traditional Celtic music at The Old Brogue, 760-C Walker Rd, 22066. A third sitting at 8 pm will be added if the first two sell out. \$17, \$12 children. Info: **703-759-3309** or **oldbrogue.com**. Tickets at instantseats.com.

March

- 1 **IONA** – The East Coast's premier pan-Celtic group.
- 8 **Ayreheart** – folk, Celtic, bluegrass and Renaissance music.

WEEKEND BLUEGRASS SERIES • HERNDON, VA

Holy Cross Lutheran Church, 1090 Sterling Rd, 20170. \$15, under 12 free. Info: Bob Thompson at **703-435-8377** or **kd4fue2@verizon.net**

March

- 8 **Dry Branch Fire Squad**, "old Baltimore" style bluegrass 3 pm
- 21 **Mountain Faith**, young musicians from North Carolina 7:30 pm

INDIVIDUAL CONCERTS

(listed chronologically)

THE OUTSIDE TRACK • SHEPHERDSTOWN, WV

FRIDAY, MARCH 6 • 8 PM

The Outside Track – five musicians effortlessly fuse traditional and contemporary Celtic music. At Shepherd University's Reynolds Hall, South King St, 25443. Advance tickets: \$20, \$18 seniors, \$15 SMAD members, \$10 students. \$2 more at the door. Info: Joanie at **304-263-2531** or **updf@earthlink.net** or **smad.us**.

JIMMY GAUDREAU & ORRIN STAR • WARRENTON, VA

SATURDAY, MARCH 7 • 8 PM

An evening of hot picking, sweet singing, and good humor with this renowned DC-area duo. Drum & Strum Music, 102 Main St, 20186. \$20 at the door. Info: **540-347-7484** or **orinstar.com**.

ELEANOR ELLIS & PEARL BAILES • ROCKVILLE, MD

SUNDAY, MARCH 8 • 7:30 PM

Eleanor Ellis and Pearl Bailes present a night of blues guitar, harmonica, and song. Also appearing, **Alpha Dog Acoustic Blues Band** with Roger Hart and Anthony Sepulveda. Info: [facebook.com/events/826512850729519](https://www.facebook.com/events/826512850729519).

BANJO LESSONS Old-Time & Bluegrass w/Don Rusnak. 50+ yrs. Exp. Near Ballston Metro, Arlington, VA. Banjos bought/sold/traded/repared. **703-522-1696**. BanjoDaddy@hotmail.com

PAID ADVERTISEMENT

CARROLL CAFE • WASHINGTON, DC

SATURDAY, MARCH 14 • 7:30 PM

The Music Pilgrim Trio: Seth Kibel (clarinet), Vladimir Fridman (guitar, vocals) and Bob Abbott (bass) showcase their skill and passion for jazz, klezmer, Russian, and classical music. Seekers Church, 276 Carroll St NW, 20012. \$16 adv, \$20 door. Info: Jesse Palidofsky at **301-562-4147** or carrollcafe.org.

CARLOS NÚÑEZ, REVELS & MORE

NORTH BETHESDA, MD

TUESDAY, MARCH 17 • 8 PM

The choruses from the 2014 Irish *Christmas Revels* join phenomenal multi-instrumentalist Carlos Núñez plus the **Sean Culin Dancers** for a night of music and revelry. Núñez, acknowledged world master of the Galician bagpipe, plays the bagpipe and other instruments of his homeland in a wide array of musical styles. Music Center at Strathmore, 5301 Tuckerman Ln, 20852. \$22-47. Info: **202-288-6999** or jrsi@rev-elsdc.org.

333 COFFEEHOUSE • ANNAPOLIS, MD

FRIDAY, MARCH 20 • 7:30–10 PM

333 presents **The Bumper Jacksons**. Annapolis Friends Meeting, 351 DuBois Rd, 21401. \$12 general public, \$10 seniors, students, ATDS or FSGW members. Info: Tom Rhoads, **443-333-9613** or 333concerts.org.

ORRIN STAR'S 60TH BIRTHDAY CONCERT

HYATTSVILLE, MD

SATURDAY, MARCH 21 • 7:30 PM

An evening of bluegrass, folk and humor with Orrin Star accompanied by John Seebach and other musical guests. Ballroom Blum, 8300 Osage Ter, 20783. \$20 at the door. Complimentary snacks. Info: orrinstar.com



CELEBRATION OF STRINGS • SHEPHERDSTOWN, WV

SATURDAY, MARCH 21 • 8 PM

A showcase featuring **Le Buit Court Dans La Ville**— Québécois traditional music, with Lisa Ornstein, Normand Miron and André Marchand; and hammered dulcimer music by **KAPO** – Karen Ashbrook and Paul Oorts, Mick Doherty and Jody Marshall. At Shepherdstown Presbyterian Church, 100 West Washington St, 25443. Tickets: \$18, \$15 seniors, \$12 SMAD members, \$8 students. Info: Joanie at **304-263-2531** or updf@earthlink.net or smad.us.

LISA NULL is accepting a few new voice students: basic vocal techniques, coaching in traditional styles. Downtown Silver Spring. FREE mutual interview! enul@starpower.net or 301-587-2286

PAID ADVERTISEMENT

SUNDAY	MONDAY	TUESDAY	WEDNESDAY
<p>Nat'l Peanut Butter Lovers Day 1</p> <p>10am Annapolis Jam 11am DC Bluegrass Union Jam 3 Glen Echo Waltz 4 & 6 Old Brogue: IONA 7:30 Hamilton: Dr. John 7:30 FSGW CONTRA DANCE TED HODAPP WITH CONTRATOPIA</p>	<p>Dr. Seuss Day 2</p> <p>7 DC Bluegrass Union Jam 7:30 Bethesda Int'l Folk Dance 7:30 Arlington Morris Women 8 Balkan Singing 8 Sea Chanteys/ Wheaton, MD 8 Baltimore English Country Dance 8 Bethesda Scottish Country Dance</p>	<p>World Wildlife Day 3</p> <p>7 Chevy Chase Israeli Dance 7:15 Reston/Herndon Folk Club 7:30 Hamilton: Jimmie Vaughan + Jonny Grave 8 Greenbelt Scottish Country Dance</p>	<p>Purim begins 4</p> <p>7:30 Rock Creek Morris Women 7:30 Arlington Jam 7:30 Birchmere Concert: <i>Gaelic Storm</i> 8 FSGW ENGLISH COUNTRY DANCE 8 Baltimore Contra Dance 8 Columbia Int'l Dance 8 Alexandria Scottish Country Dance 8 Baldwin's Station Concert: <i>The Kennedys</i> 8 FSGW BOARD MEETING</p>
<p>Daylight Savings Time 8</p> <p>10am Annapolis Jam 2 CABOMA Jam 3 Herndon Bluegrass: <i>Dry Branch Fire Squad</i> 3 FSGW FAMILY DANCE 4 FSGW GOSPEL SING 4 Alpine Dancers 4 & 6 Old Brogue: <i>Ayreheart</i> 7:30 Ellis & Bailes Concert 7:30 FSGW CONTRA DANCE SUE ROSEN WITH GRAHAM DEZARN & BRUCE ROSEN</p>	<p>9</p> <p>7:30 Bethesda Int'l Folk Dance 7:30 Arlington Morris Women 8 Balkan Singing 8 Baltimore English Country Dance 8 Bethesda Scottish Country Dance</p> <p><i>Spring Forward!</i></p> 	<p>International Bagpipe Day 10</p> <p>7 Chevy Chase Israeli Dance 7 Focus Rockville, MD: Karen Oliver and Marshall Artz 7:15 Reston/Herndon Folk Club 8 Greenbelt Scottish Country Dance</p> <p>NEWSLETTER DEADLINE!!</p>	<p>Johnny Appleseed Day 11</p> <p>7:30 Rock Creek Morris Women 8 FSGW ENGLISH COUNTRY DANCE 8 Baltimore Contra Dance 8 Columbia Int'l Dance 8 Alexandria Scottish Country Dance 8 Sea Chanteys Baltimore 8 Barns of Wolf Trap: <i>Buckwheat Zydeco</i></p>
<p>15</p> <p>10am Annapolis Jam 3 Glen Echo Waltz 3 FSGW HOUSE CONCERT: ERIC & SUZY THOMPSON 4 Sandy Spring Sacred Harp Sing 7:30 FSGW CONTRA DANCE MAIA MCCORMICK WITH CORACREE</p>	<p>16</p> <p>7 DC Bluegrass Union Jam 7:30 Bethesda Int'l Folk Dance 7:30 Arlington Morris Women 7:30 IMT Rockville: 3 Banjos! 8 Balkan Singing 8 Baltimore English Country Dance 8 Bethesda Scottish Country Dance</p>	<p>St. Patrick's Day 17</p> <p>7 DC Shape Note Sing 7 Chevy Chase Israeli Dance 7:15 Reston/Herndon Folk Club 7:30 Nunez/Revels Concert 8 Greenbelt Scottish Country Dance</p> 	<p>18</p> <p>7:30 Arlington Jam 7:30 Rock Creek Morris Women 8 FSGW ENGLISH COUNTRY DANCE 8 Baltimore Contra Dance 8 Columbia Int'l Dance 8 Alexandria Scottish Country Dance 8 Sea Chanteys Annapolis</p>
<p>22</p> <p>10am Annapolis Jam 2 CABOMA Jam 3 Hot Society Dance Glen Echo 3 GWCC Monthly Ceili 3 FSGW CHALLENGING CONTRAS 4 FSGW SHAPE NOTE SINGING 5 Hayes & Cahill Concert 7:30 Birchmere: Regina Carter 7:30 FSGW CONTRA DANCE WILL MENTOR WITH THE STRINGRAYS FSGW ELECTION MEETING</p>	<p>23</p> <p>7:30 Bethesda Int'l Folk Dance 7:30 Arlington Morris Women 8 Balkan Singing 8 Baltimore English Country Dance 8 Bethesda Scottish Country Dance</p>	<p>Nat'l Chocolate Covered Raisins Day 24</p> <p>7 Chevy Chase Israeli Dance 7:15 Reston/Herndon Folk Club 8 Greenbelt Scottish Country Dance</p>	<p>Manatee Appreciation Day 25</p> <p>7 Cajun Jam 7:30 Rock Creek Morris Women 8 FSGW ENGLISH COUNTRY DANCE 8 Baltimore Contra Dance 8 Columbia Int'l Dance 8 Alexandria Scottish Country Dance 8 Sea Chanteys Washington DC</p>
<p>29</p> <p>10am Annapolis Jam 3 Glen Echo Waltz 4 Alpine Dancers 7:30 FSGW CONTRA DANCE TOM CALWELL AND MYRA HIRSCHBERG WITH THE LOVE MONGRELS</p> <p>8 Barns of Wolf Trap: Art Garfunkel</p>	<p>30</p> <p>7:30 Bethesda Int'l Folk Dance 7:30 Arlington Morris Women 8 Balkan Singing 8 Baltimore English Country Dance 8 Bethesda Scottish Country Dance 8 Barns of Wolf Trap: Art Garfunkel</p>	<p>Bunsen Burner Day 31</p> <p>7 Chevy Chase Israeli Dance 7:15 Reston/Herndon Folk Club 8 Greenbelt Scottish Country Dance 8 Barns of Wolf Trap: Art Garfunkel</p>	<p><i>All times are pm unless otherwise noted.</i></p> <p>March is National Music In Our Schools Month, Play the Recorder Month, and Sing With Your Child Month, as well as Women's History Month.</p>

THURSDAY	FRIDAY	SATURDAY
<p>Purim ends 5</p> <p>6:30 Harrisonburg Family Dance 7:30 GLEN ECHO INT'L DANCE 7:30 Birchmere Concert: <i>Gaelic Storm</i> 7:30 The Grapevine Storytelling 8 Barns of Wolf Trap Concert: <i>Austin Lounge Lizards</i> 8 Mt. Vernon Int'l Dance 8 Foggy Bottom Morris Men 8:15 Back Room Blues Dance</p>	<p>Oreo Cookie Day 6</p> <p>8 Shepherdstown, WV Concert 8:30 Greenbelt Int'l Folk Dance 8:30 Friday Night Contra Dance 9 Gypsy Sally's: <i>Town Mountain + Tuckahoe Ridge</i></p>	<p>7</p> <p>1 Archie Edwards Blues Jam 2 Jammin' Java: <i>Yale U All-Cello</i> 3 Baltimore Gentle English Country Dance 4 FSGW OPEN SING 7 Focus Mt. Vernon, VA: Peter Mayer + Doug Alan Wilcox 7:30 Scandia DC/MAND Dance 8 Barns of Wolf Trap: <i>Vatsala Mehra</i> 8 Gaudreau & Star Concert 8 Shepherdstown Contra Dance 9 Gypsy Sally's: <i>Dry Mill Road +</i></p>
<p>Girl Scout Day 12</p> <p>6 Front Royal, VA Family Dance 7:30 GLEN ECHO INT'L DANCE 7:30 FSGW SILVER SPRING CONTRA DANCE 7:30 Birchmere: Leo Kottke 8 Mt. Vernon Int'l Dance 8 Foggy Bottom Morris Men 8:15 Back Room Blues Dance</p>	<p>Ear Muff Day 13</p> <p>8:30 Hamilton: <i>The Lone Bellow + Odessa</i> 8:30 Greenbelt Int'l Folk Dance 8:30 Friday Night Contra Dance with <i>Glen Echo Open Band</i></p>	<p>National Pi Day 14</p> <p>1 Archie Edwards Blues Jam 5 Baltimore Family Dance 7 Focus Alexandria, VA: John Flynn & Susan Greenbaum 7:30 Carroll Café: <i>The Music Pilgrim Trio</i> 5 Baltimore Contra Dance 8 Silver Spring English Country Dance 8:30 FSGW DC SQUARE DANCE</p>
<p>19</p> <p>6:30 Harrisonburg, PA Family Dance 7:30 GLEN ECHO INT'L DANCE 7:30 Arlington Circle Dance 8 Wheaton Folksong Sing-In 8 Mt. Vernon Int'l Dance 8 Foggy Bottom Morris Men 8:15 Back Room Blues Dance</p> 	<p>World Storytelling Day 20</p> <p>7:30 333 Coffeehouse 8 Barns of Wolf Trap Concert: Enter the Haggis 8 Cellar Stage Concert: <i>Mustard's Retreat</i> 8:30 Hamilton: <i>Rebirth Brass Band</i> 8:30 Greenbelt Int'l Folk Dance 8:30 Friday Night Contra Dance</p> <p>Vernal Equinox at 6:45 pm</p>	<p>21</p> <p>1 Equinox Storytelling 1 Archie Edwards Blues Jam 6:30 Revels Community Sing 7 St. Patrick's Day Contra Ceilidh 7 Annapolis Contra Dance 7 Scandinavian Dance 7 Lancaster, PA Contra Dance 7:30 Orrin Star Birthday Concert 7:30 Leesburg English Country Dance 7:30 Birchmere: Tom Rush 7:30 Herndon Bluegrass: Mountain Faith 7:30 FSGW STORYSWAP 8 FSGW PROGRAM: MIKE AGRANOFF CONCERT 8 Celebration of Strings Concert 8 Greenbelt Israeli Dance 8:30 Hamilton: <i>Rebirth Brass Band</i></p>
<p>National Spinach Day 26</p> <p>6:30 Luray, VA Family Dance 7 Mt. Rainier, MD Folk Hoot 7:30 Hamilton: <i>Horse Feathers</i> 7:30 IMT DC: <i>Le Bruit Court Dans La Ville</i> 7:30 GLEN ECHO INT'L DANCE 8 Baldwin's Station: <i>Joan & Joni</i> 8 Foggy Bottom Morris Men 8:15 Back Room Blues Dance 8:30 Gypsy Sally's: <i>Nora Jane Struthers, Party Line, Humming House</i></p>	<p>27</p> <p>8:30 Greenbelt Int'l Folk Dance 8:30 Friday Night Contra Dance</p>	<p>28</p> <p>1 Archie Edwards Blues Jam 1:30 Hammer Dulcimer Jam 7:30 Women Folk Concert: Takoma Park, MD 8 Frederick, MD Contra Dance</p>

FSGW Advance Notice

Sunday, April 12 • 3 pm
FSGW House Concert
MARTIN GROSSWENDT & SUZANNE SALEM-SCHATZ
 Mount Lubentia (The Wallaces')
 (Upper Marlboro, MD)

Friday, April 10, thru
 Sunday, April 12
26TH ANNUAL CHESAPEAKE DANCE WEEKEND
 CAMP LETTIS, EDGEWATER, MD

Saturday and Sunday
 April 11 and 12
 10 am -3:30 pm both days
THE 26TH ANNUAL POTOMAC RIVER SACRED HARP CONVENTION
 The Great Falls Grange
 9818 Georgetown Pike (Route 193)
 Great Falls, Virginia.

Saturday, May 9 • 7:30 PM
FSGW's 29TH ANNUAL WASHINGTON SPRING BALL
 Cherry Hill Conference Center
 College Park, MD

Saturday, May 30 and
 Sunday, May 31
35TH ANNUAL WASHINGTON FOLK FESTIVAL
 GLEN ECHO PARK, MD

Friday, October 2 through
 Monday, October 5
51ST ANNUAL FSGW GETAWAY
 West River Conference Center
 West River, MD

March 2015

CONCERTS continued

MARTIN HAYES/DENNIS CAHILL • THE PLAINS, VA**SUNDAY, MARCH 22 • 5 PM**

Martin Hayes (fiddle) and **Dennis Cahill** (guitar) perform Irish traditional music. Reception with the artists follows the concert. Grace Episcopal Church, 6507 Main St, 20198. \$25. Students \$15. Info: **540-253-5177** or **concertseries@grace-theplains.org**.

**FOLK CLUB OF RESTON-HERNDON
HERNDON, VA****TUESDAY, MARCH 24 • 7:15 PM**

Matt and Shannon Heaton, musicians in the Irish tradition, perform centuries-old songs that feel current and conversational. Amphora Diner Deluxe, 1151 Elden St, 20170. \$11 members/\$12 non-members. Open mic on other Tuesdays. Info: **DAHurdSr@cs.com** or **restonherndonfolkclub.com**.

WOMEN FOLK • TAKOMA PARK, MD**SATURDAY, MARCH 28 • 7:30 - 9:30 PM**

Round-robin of original music presented by six award-winning mid-Atlantic singer/songwriters: **Mary Amato, Suzanne Brindamour, Audrey Engdahl, Greta Ehrig, Kipyn Martin, Annette Waslik**. Takoma Park Community Cntr Auditorium, 7500 Maple Ave, 20912. \$10 suggested donation. Info: **www.facebook.com/events/1595005614053215**



Classes

ORRIN STAR MANDOLIN & STAGECRAFT CLASSES**HMT • TAKOMA PARK, MD****SUNDAY, MARCH 8 • NOON-4:30 PM**

From noon to 2:15, Rhythm Mandolin. \$50

From 3 to 4:30, "Engaging Your Audience – Stage Presence for Performers." \$25

Both at House of Musical Traditions, 7010 Westmoreland, 20912. Info: **301-270-9090** or **lessons@hmtrad.com**, or **orrinstar.com** for posters with additional detail.

SCANDINAVIAN DANCE CLASSES • BETHESDA, MD**TUESDAYS, MARCH 3-24 • 7:30-9:30 PM**

Beginning and advanced dancers welcome. Learn Hambo, Schottis, Waltz, *Zwiefacher*, and other Swedish and Norwegian couple turning dances, including requests. Sometimes live music. Wear smooth-soled shoes (leather soles are best) for turning, not running shoes. \$5. First time free. Info: Lisa Brooks at **240-731-1935**, **lisa@HamboDC.org** or **www.HamboDC.org**.

Directions: Enter NIH at Wisconsin Ave. and the Gateway Drive Visitor Entrance (south of South Dr., reachable ONLY from the north on Wisconsin Ave.). Park there, or drive to the south center of NIH and park in NIH permit parking next to Building T-39. Or walk 12 minutes from the Medical Center Metro stop. See map at **www.HamboDC.org**.

ADULT IRISH SET DANCE CLASSES**SILVER SPRING, MD****THURSDAYS, THROUGH MAY 7 • 7 - 9:30 PM**

The Greater Washington Ceili Club offers Irish social dance lessons in a relaxed setting. No partner needed. 7-8 pm,

basic steps and dances. 8-9:30 pm advanced dances. Third Thursday often a mini-ceili with live music. (1/15, 2/19, 3/19, 4/15, 5/7). Wear comfortable clothing and smooth-soled shoes. \$40/season, first class free. Argyle Park Activities Bldg, 1030 Forest Glen Rd, 20901. (Just outside the Beltway, Georgia Ave exit). Plentiful free parking. Info: Paul O'Donnell at **301-649-6410** or **info@gwcconline.org**.

WALTZ PRACTICUM • GREENBELT, MD**SUNDAY, MARCH 8 • 2-4 PM**

Waltz lovers, please join us for an open practicum at the Greenbelt Community Center Dance Studio. Mid-tempo waltzes (108-162 bpm) to recorded music. All waltz styles are welcome; eclecticism and fusion encouraged. Dance shoes mandatory; street shoes not permitted on dance floor. 15 Crescent Rd, 20770. \$5 suggested donation. Info: Elliott Drabek at **443-653-1468** or **Elliott.drabek@gmail.com** or **tinyurl.com/waltz-practicum**.

IRISH SOCIAL DANCE CLASSES • GAITHERSBURG, MD**TUESDAYS, THROUGH MAY 12 • 7-9 PM**

The Ring of Kerry Irish Dancers teach Irish set and ceili dancing at Ridgeview Middle School, 16600 Raven Rock Dr, 20878. No partner, Irish heritage, or dance experience required, but bring a sense of humor and comfortable shoes. \$50 per person for the entire semester. Free class voucher available online. Info: Jean Woods at **301-253-4263** or **jtmwoods@gmail.com** or **ringofkerrydancers.org**.

Dances

Note: The events listed here welcome all levels from beginners to experienced dancers. The dances are taught and walked through first, so no experience is required. Come and enjoy, with or without a partner!

COMMUNITY/FAMILY

FSGW Family Dance. Details on page XX

HARRISONBURG FAMILY DANCE • HARRISONBURG, VA FIRST AND THIRD THURSDAYS • 6:30–8:30 PM

First Presbyterian Church, 17 Court Sq., 22802. Line, circle and square sets. Free and open to all. Info: tommack1861@gmail.com or [facebook.com/SVCWED](https://www.facebook.com/SVCWED)

FRONT ROYAL FAMILY DANCE • FRONT ROYAL, VA SECOND THURSDAYS • 6–7:30 PM

Samuel's Public Library, 330 East Criser Rd., 22630. Line, circle and square sets. Free and open to all. Info: tommack1861@gmail.com or [facebook.com/SVCWED](https://www.facebook.com/SVCWED)

LURAY FAMILY DANCE • LURAY, VA FOURTH THURSDAYS • 6:30–8:30 PM

Christ Episcopal Church, 16 Amiss Ave., 22835. Line, circle and square sets. Free and open to all. Info: tommack1861@gmail.com or [facebook.com/SVCWED](https://www.facebook.com/SVCWED)



BFMS FAMILY DANCE • PIKESVILLE, MD SATURDAY, MARCH 14 • 5–6:30 PM

BFMS presents a Family Dance on 2nd Saturdays (March-May, October-December). Dancing from 5 pm to 6:30, and a potluck from 6:30 to 7:30. Dances are appropriate for young children and families, but all ages are welcome. No experience or partner necessary. **DeLaura Padovan** calls to music by **Devine Comedy: John Devine** (guitar), **Marty Taylor** (whistles and concertina), and **Steve Hickman** (fiddle). St. Mark's on the Hill, 1620 Reisterstown Rd, 21208 \$4 Members, \$6 Non-members. Children under 3 free. Info: Janet Henry, [443-360-8998](tel:443-360-8998), or janetlhenry@verizon.net, or BFMS.org.

CELTIC/CEILI

GWCC CEILI • COLLEGE PARK, MD SUNDAY, MARCH 22 • 3–8 PM

The Greater Washington Ceili Club sponsors a 4th Sunday dance (Sept-May). Music by **Pride of Patuxent Pond Scum**. Newport Set workshop at 3. Ceili 4-8, with potluck dinner during the first break. Cherry Hill Park Conference Cntr, 9800 Cherry Hill Rd, 20740 (entrance code 76000). \$15 Members, \$20 Non-members. Ages 11-20 half price. Ages 10 and under free. Info: [301-512-4480](tel:301-512-4480) or gwcc-online.org.

CONTRA

Sundays

FSGW Sunday Night Dances. Details on page 5.

Wednesdays



BFMS CONTRA DANCE • BALTIMORE, MD WEDNESDAYS • 8 - 10:30 PM

Beginners are always welcome. New dancer workshops are held at 7:30 on the 2nd and 4th Wednesdays. Nationally known musicians and callers appear regularly. Members \$9, non-members \$13, member/Non-member students with ID \$4/\$6. Lovely Lane Church, 2200 St. Paul St, 21218. Info: bfms.org.

March

- 4 **Jack Mitchell** calls to **Contra Mantra: Ryck Kaiser** (fiddle), **Bruce Campbell** (bass), and **Jill Smith** (piano)
- 11 **Maia McCormick** calls to **Mat Clark** (fiddle) and **Dave Wiesler** (piano, guitar). New dancer workshop at 7:30.
- 18 **Eric Black** calls to the **Baltimore Open Band**.
- 25 **Tom Calwell** and **Myra Hirschberg** calls to the **New Hip Trio: Joe DeZarn** (fiddle), **Ralph Gordon** (bass), and **Liz Donaldson** (piano). New dancer workshop at 7:30 pm.

Thursdays

2nd Thursday Contra • Silver Spring, MD
FSGW Co-sponsored Dance. Details on page 6

Fridays

FRIDAY NIGHT DANCERS • GLEN ECHO, MD FRIDAYS • 8:30 - 11:30 PM



The Friday Night Dancers, a non-profit, volunteer-based organization, in cooperation with the National Park Service, Montgomery County, and the Glen Echo Park Partnership for Arts and Culture, sponsor weekly contra dances to live music in the historic Glen Echo Spanish Ballroom (unless otherwise specified), at 7300 MacArthur Blvd, 20812. New dancer class every week from 7:30 to 8:15. \$10 for the lesson and dance. \$5 for age 17 and under. (Age 17 and under free on second Fridays.) Info: FridayNightDance.org, or [301-632-2222](tel:301-632-2222), or the Friday Night Dance Facebook page.

March

- 6 **Jack Mitchell** calls to **Sugar Beat: Elke Baker** (fiddle), **Marc Glickman** (piano), and **Susan Brandt** (flute).

DANCES CONTINUED

- 13 The fabulous *Glen Echo Open Band*; with caller **Scott Higgs**
- 20 **Will Mentor** calls to *The Stringrays*: **Rodney Miller** (fiddle), **Max Newman** (guitar), **Stuart Kenney** (bass).
- 27 **Donna Hunt** calls to *Atlantic Crossing*: **Viveka Fox** (fiddle), **Peter Macfarlane** (fiddle), **Rick Klein** (guitar) and **Tristan Henderson** (mandolin, banjo, foot percussion).

*Saturdays***SMAD CONTRA DANCE • SHEPHERDSTOWN, WV****SATURDAY, MARCH 7 • 8 - 11 PM**

This month, **Jack Mitchell** calls to *Triple Helix*. Beginners workshop at 7:30. All levels welcome, no partner needed. Please wear clean, soft-soled shoes to protect the floor. Dance is at the Shepherdstown War Memorial Building, German and King Sts, 25443. Members, \$10 Non-members, \$5 under 12. Info: Becky at **304-876-2169** or smad.us.

**BFMS CONTRA • PIKESVILLE, MD****SATURDAY, MARCH 14 • 8 - 11 PM**

BFMS presents 2nd Saturday contra and square dancing. Introduction to contra dancing from 7:35 to 7:55; dance from 8 to 11 pm. Potluck from 6:30-7:30. Beginners, singles, couples and families welcome. No experience or partner necessary. This month, **DeLaura Padovan** calls to music by *Devine Comedy*: **John Devine** (guitar), **Marty Taylor** (whistles and concertina), and **Steve Hickman** (fiddle). St. Mark's on the Hill, 1620 Reisterstown Rd, 21208. \$9 Members, \$13 Non-members. Under 21 full-time students with ID \$4 members, \$6 Non-members. Info: **Becca Dennison** at **301-606-7115**, or satdance@bfms.org or BFMS hotline **888-646-BFMS**.

LANCASTER CONTRA • LANCASTER, PA**SATURDAY, MARCH 21 • 7 - 10 PM**

Susan Taylor calls to *The MetroGnomes*: **McGregor Yatsevitch** (fiddle), **Mark Vidor** (piano), and **Bob Garber** (clarinet). St. John's Episcopal Church, 321 W Chestnut St, 17603. Beginners workshop at 6:15. \$9 Adults, \$6 Students. Age 15 and under free. Info: Karen at **717-951-4317** or lancaster-contra.org.

ST. PATRICK'S DAY DANCE • WASHINGTON, DC**SATURDAY, MARCH 21 • POTLUCK AT 6, DANCE AT 7**

Celebrate the feast day of St. Patrick this year with a night of contras, ceilidhs, and squares with calling by **Janine Smith**! Local stringband *Sligo Creek Stompers* and ceilidh band *Frog Hammer* host this annual event. Bring a dish to share. We welcome volunteers for setup/cleanup. Suggested donation \$10-20. St. Stephen's Church, 1525 Newton St, NW, 20010. Info: **Adrian** at **202-725-8758** or sligocreekstompers@gmail.com

ATDS CONTRA • ANNAPOLIS, MD**SATURDAY, MARCH 21 • 7 - 10 PM**

Greg Frock will call contras to the mesmerizing music of *Sugar Beat*: **Elke Baker** (fiddle), **Marc Glickman** (piano) and **Susan Brandt** (flute). Free introductory lesson at 6:30. All ages welcome, no experience or partner necessary. All dances taught and walked through. Snacks to share at the break are welcome. Annapolis Friends Meeting House, 351 DuBois Rd, 21401. \$10, with discounts for seniors, students, families, and ATDS Members. Info: Jan Scopel at **443-540-0867** or janscope@hotmail.com; Ann Fallon at **410-268-0231** or aefallon@verizon.net, or contradancers.com/atds.

FREDERICK CONTRA • FREDERICK, MD**SATURDAY, MARCH 28 • 8 - 11 PM**

Caller TBA. Dance to dynamic arrangements of great tunes played by *Wombat Crossing*: **Carl Friedman** (fiddle), **Robin Wilson** (flute), and **Charlie Pilzer** (piano). Bring a snack to share at the break. Introductory workshop at 7:15. Trinity School, 6040 New Design Rd (near Harry Grove Stadium), 21703. \$10; students with ID \$5. Info: Boe Walker at **301-694-6794**, or contradancers.com.

ENGLISH COUNTRY*Mondays***BALTIMORE FOLK MUSIC SOCIETY****PIKESVILLE, MD****MONDAYS • 8 - 10:30 PM**

All dances are taught and walked through. New dancer orientation first Monday at 7:45. Admission \$8 Members, \$11 Non-members, \$2 student discount. St. Mark's on the Hill Parish Hall, 1620 Reisterstown Rd, 21208. Info: **Carl Friedman** at **410.321.8419** or engdance@bfms.org.

March

- 2 New Dancer orientation (free) at 7:45. **Tom Spilsbury** calls to **Jeff Steinberg** (violin), **Robin Wilson** (flute), and **Ben Hobbs** (piano).
- 9 **April Blum** calls to *Trio Con Brio*: **Elke Baker** (violin), **Paul Oorts** (strings, accordion), and **Jonathan Jensen** (piano).
- 16 **Rich Galloway** calls to **Emily Aubrey** (violin), **Steve Epstein** (clarinet), and **Judy Meyers** (piano).
- 23 **Ann Fallon** calls to **Tina Chancey** (violin), **Brian Cardell** (winds) and **Carl Friedman** (piano).
- 30 **Mike Franch** calls to *Geud Band of Baltimore*.

*Wednesdays***FSGW English Country Dance
Details on page 4***Saturdays***BFMS GENTLE ENGLISH DANCE • PIKESVILLE, MD
SATURDAY, MARCH 7 • 3 - 5:30 PM**

An afternoon of gentler English Country dances from the regular ECD repertoire, selected to be kind to joints and sense of balance. This month, **Susan Taylor** calls to music by **Emily Aubrey** (violin), **Brian Cardell** (recorders) and **Ben Hobbs** (piano). 1620 Reisterstown Rd, 21208. Info: Eileen Franch at Franch@verizon.net.

**SILVER SPRING ECD • SILVER SPRING, MD
SATURDAY, MARCH 14 • 8 PM**

Dance to music by **Peascods Gathering** with calling by **Bob Farrall**. Beginners and singles welcome. \$5. Glen Haven Elementary School, 10900 Inwood Ave, 20902. Parking and entrance at rear of school. Info: Carl Minkus at **301-493-6281** or cminkus@verizon.net, or Bob Farrall at **301-577-5018**.

**LEESBURG ASSEMBLY • GREAT FALLS, VA
SATURDAY, MARCH 21 • 7:30-10:30 PM**

Optional period dress night for more fun in March! All dances taught and called to live music. Check the website for information about the caller and musicians. St. Francis Episcopal Church Hall, 9220 Georgetown Pk, 22066 – 4.7 miles west of the Beltway. \$10. Info: David Pacelli at **703-757-8648** or www.thelessburgassembly.org.

INTERNATIONAL**ALPINE DANCERS • NEW CARROLLTON, MD
SUNDAYS, MARCH 8 AND 29 • 4 - 6:30 PM**

Alpine Dancers perform and teach folk dance, specializing in graceful and lively couple and trio dances from Austria, Germany and Switzerland. Always looking for energetic beginners. Free open practice at New Carrollton Municipal Center, 6016 Princess Garden Pkwy, 20784. Info: Carol Traxler at **301-577-3503** or caroltraxler@yahoo.com, or alpinedancers.org.

*Mondays***BETHESDA INTERNATIONAL FOLK • BETHESDA, MD
MONDAYS • 7:30 - 10 PM**

Come join our friendly group and learn dances from all over the world. Beginners 7:30-8, intermediate / advanced 8-10 (requests from 9:15-10). No partner needed. All levels of experience welcome. Adults over 16 please. Mostly recorded

music; wonderful wood floor. Jane Lawton Community Ctr, 4301 Willow Ln, 20815. \$8. Info: Phyllis or Brandon Diamond, **301-871-8788**, DiamondDanceCircle.com or DiamondDanceCircle@comcast.net.

*Wednesdays***COLUMBIA FOLK DANCERS • COLUMBIA, MD
WEDNESDAYS • 8-10:30 PM**

We meet at Kahler Hall in Columbia, Village of Harpers Choice. Class at 8, dancing starts at 8:30. Requests taken throughout the evening. \$5 (\$3 for seniors). Info: Ethel at **410-997-1613**, Ed at **410-740-2309**, or columbiafolkdancers.org.

*Thursdays***GLEN ECHO INTERNATIONAL FOLK • BETHESDA, MD
THURSDAYS • 7:30-10:45 PM**

Church of the Redeemer, 6201 Dunrobbin Dr., 20816 near Goldsboro/MacArthur intersection. Lesson at 7:30, Request dances from 9 to 10:45. Mostly recorded music. No partner or experience necessary. Wear comfortable clothing and soft-soled shoes. Co-sponsored by FSGW. \$5 Info: Jamie at **301-466-3018** or dancingplanet@erols.com.

**CIRCLE DANCE • ARLINGTON, VA
3RD AND 5TH THURSDAYS • 7:30-9:30 PM**

Come and explore dances from all over the world in a spirit of mediation and joy. All dances taught. Recorded music. Unitarian Universalist Church of Arlington, Rte 50 at George Mason Dr, 4444 Arlington Blvd, 22204. Donation requested. Info: Ann Ulmschneider at **703-528-5114** or aulmsch@msn.com.

**MT. VERNON INT'L FOLK DANCING • ALEXANDRIA, VA
THURSDAYS • 8-10 PM**

Note: No dance March 26. We welcome beginners and advanced dancers; no partner necessary. Friendly and diverse group, fabulous wooden floor. A mix of easy dances, advanced instruction and requests. Mt. Vernon Unitarian Church, 1909 Windmill Ln, 22307. Donation \$4. Info: Patricia at **703-472-3888** or pdw@patriciadaywilliams.com.

*Fridays***GREENBELT FOLK DANCING • GREENBELT, MD
FRIDAYS • 8:30-10:45 PM**

We focus on dance from Eastern Europe and Scandinavia. No partner or experience necessary. Beautiful dance floor. Teaching from 8:30 to 9:15, request from 9:15 on. Live music on first Fridays. Greenbelt Comm. Cntr Studio, 15 Crescent Rd, 20770. First Fridays, \$12; other Fridays \$7. Students and seniors half price except first Fridays. Info: Larry Weiner at **301-565-0539** or larry@larryweiner.com, or larryweiner.com/FridayDance.htm

DANCES CONTINUED

ISRAELI

ISRAELI DANCING • CHEVY CHASE, MD**TUESDAYS • 7-10:30 PM**

Instruction from 7 to 7:45. We focus on building a repertoire of both classic and newer Israeli dances in a friendly, welcoming atmosphere. Recorded music. Light refreshments served. Ohr Kodesh Congregation, 8300 Meadowbrook Ln, 20815. \$8 adults, \$6 students. Info: Mike Fox at **240-424-0805** or **markidmike.com**, or **markidmike@gmail.com**.

ISRAELI DANCING • GREENBELT, MD**SATURDAY, MARCH 21 • 8-11:15 PM**

Israeli Classic Dance party (dances from before 1990). Recorded music, light refreshments. Greenbelt Community Cntr, 15 Crescent Rd, 20770. \$8. Info: Ben Hole at **301-441-8213**.

MORRIS

ARLINGTON NORTHWEST MORRIS WOMEN**MONDAYS • 7:30-9 PM**

Learn and perform the traditional morris dances of Northwest England, which combine simple footwork with power and precision. We are a welcoming group of women who practice in a great place with a wooden floor (easier on your knees) at the Unitarian Universalist Church of Arlington, Arlington Blvd at George Mason Dr., 22204 Info: **suzelise@comcast.net** or **nwdancers@comcast.net**

ROCK CREEK MORRIS WOMEN**WEDNESDAYS • 7:30-9:45 PM**

Learn English morris dancing and become part of a community that dances, sings, and socializes together. Bethesda Elementary School, 7600 Arlington Rd, 20814, walkable from Bethesda Metro. Info: Louise at **301-927-6373** or **louise-neu@earthlink.net** or **uswet.com/RCMW.html**.

FOGGY BOTTOM MORRIS MEN**THURSDAYS • 8-10 PM**

Experience the vigorous thrill of the morris and the camaraderie of a morris team! Learn and perform dances from English Cotswold villages, mummers' plays and occasional long-sword dances. We welcome new and slightly used dancers to our practices at Knock on Wood Tap Studio, 6925 Willow St, NW, Washington DC and/or at the pub afterwards. Info: Alan Peel at **301-920-1912** or **squire@fbmm.org** or **fbmm.org**.

SCANDINAVIAN

4TH ANNUAL RØROSPOLS DANCE • WASHINGTON, DC**SATURDAY, MARCH 7****POTLUCK 6:30 PM • DANCE 7:30 PM**

Scandia DC and Mid Atlantic Norwegian Dancers (MAND) co-sponsor this special evening dance party, featuring one of the best bands from Røros, Norway, **Småviltlaget**, who will play Norwegian Gammaldans and lots of Rørospols. Everyone is welcome. Let us know if you want a Rørospols lesson before the potluck. Location in Northwest DC near Georgetown University. Info: Linda Brooks or Ross Schipper at 202-333-2826 or **Linda@ScandiaDC.org**

NORWEGIAN DANCE & POTLUCK • SILVER SPRING, MD

This month's event is the March 7 Rørospols dance, co-sponsored with Scandia DC. Info: Jenny at **301-371-4312** or **pi@xecu.net**, or **MAND.fanitull.org**

SCANDIA DC DANCE • GREENBELT, MD**SATURDAY, MARCH 21 • 7-10 PM**

Scandia DC sponsors a 3rd Saturday dance. This month live fiddle music by **Andrea Hoag**, a well-known local treasure, and the **Scandia DC Spelmansslag**. No partners necessary. There may be some recorded music. Teaching from 7-8: Runslänga from Delsbo and Slängpolska from Enånger. Greenbelt Community Cntr Dance Studio (wood floor), 15 Crescent Rd, 20770. \$10. Inclement weather cancellation 310-474-0646. Info: Linda at **202-333-2826**, **linda@scandiadc.org**, or **www.scandiadc.org**.

SCOTTISH

See rscds-greaterdc.org for all Scottish dance listings.

BETHESDA SCOTTISH COUNTRY DANCE**MONDAYS • 8-10 PM**

NIH Building T-39 (Dance and Aerobic Center). #5 Call or email in advance for directions. Info: John MacLeod at **301-622-5945** or **blackolav@gmail.com**.

GREENBELT SCOTTISH COUNTRY DANCE**TUESDAYS • 8-10 PM**

Dance year-round at the Greenbelt Community Center. \$8. Info: Jay Andrews at **703-719-0596** or **andrewj@rcn.com**.

ALEXANDRIA SCOTTISH COUNTRY DANCE**WEDNESDAYS • 8-9:45 PM**

Learn Scottish dance at the Durant Center, 1605 Cameron St, Alexandria 22314. \$5 Info: **elanyi@cox.net**.



SWING/BLUES

BACK ROOM BLUES • GLEN ECHO, MD

THURSDAYS • 8:15 - 11:30 PM

Popular weekly blues dance in the "Back Room" at the Spanish Ballroom, Glen Echo Park, 7300 MacArthur Blvd, 20812. Sprung wood floor. Come early, as it is selling out. Beginner lesson from 8:15 to 9. DJ Mike Marcotte and guests play blues from 9 to 11:30. Info: Donna Barker at **301-634-2231** or CapitalBlues.org.

WALTZ/COUPLES DANCING

AFTERNOON WALTZ • GLEN ECHO, MD

A lively mix of folk waltzes with other couples dances, including hambo, swing, tango, and polka. Beginner lesson from 2:45 to 3:30. No partner required. Glen Echo Spanish Ballroom, 7300 MacArthur Blvd, 20812. \$10. Info: WaltzTimeDances.org or **301-634-2222**.

March

- 1 *Taylor Among the Devils*: Marty Taylor, Steve Hickman, Alexander Mitchell, Jonathan Jensen
- 15 *Valse Impressions*: Edith Coakley Stowe, Carrie Rose, Liz Donaldson, Ralph Gordon
- 29 *Waltz Weavers*: Alexander Mitchell, Carrie Rose, Liz Donaldson, Ralph Gordon

HOT SOCIETY DANCE • GLEN ECHO, MD

SUNDAY, MARCH 22 • 3-6 PM

The Hot Society Orchestra of Washington plays music from the 20s, 30s and 40s. Foxtrot, two-step, waltz, cha cha, rhumba, swing and more. No partner or experience necessary. Samba lesson at 3 pm. Glen Echo Spanish Ballroom, 7300 MacArthur Blvd, 20812. \$15. Info: Dave Tucker at **703-861-8218** or glenecopark.org or hotsociety.net.



Jams/Open Mics/Audience Participation

Sundays

ACOUSTIC JAM • ANNAPOLIS, MD

SUNDAYS • 10 AM - 12:30 PM

Indoors at the Visitor Center, Quiet Waters Park. Info: ken.i.mayer@gmail.com.

DC BLUEGRASS UNION DUPONT CIRCLE JAM WASHINGTON, DC

1ST SUNDAYS • 11 AM - 2 PM

The Mansion, 2020 O St NW, 20036. Accessible on Metro Red Line. Info: **Mike Marceau** at mikemarceau@juno.com. Info on venue: omansion.com.

CABOMA JAM • ANNANDALE, VA

2ND AND 4TH SUNDAYS • 2 PM

Capitol Area Bluegrass and Old-Time Music Association holds jams at Marantha Baptist Church, 311 Annandale Rd, 22003. Info: Don at **703-522-1696**.

SACRED HARP SINGING • SANDY SPRING, MD

3RD SUNDAYS • 4-6 PM

Singing is followed by a potluck supper. Location is a small schoolhouse behind the Community Building, 17801 Meetinghouse Rd, 20860 (about 10 miles west of Laurel). Info: Dave Greene at **301-570-3283** or dgreene@all-systems.com to confirm.

Mondays

BALKAN SINGING • TAKOMA PARK, MD

MONDAYS • 8 PM

Informal singing group, *Sedenka*, meets in to sing Balkan village songs. Interested novices welcome. Info: Katya at **301-270-4175** or Katya@partan.com

DC BLUEGRASS UNION VFW JAM • TAKOMA PARK, MD

1ST AND 3RD MONDAYS • 7-10 PM

Free. Non-smoking. At Veterans of Foreign Wars Post 350, 6420 Orchard Ave (corner of 4th Ave), 20912, near New Hampshire and Eastern Aves. Info: Barb Diederich at **301-633-2504** or barb@barbdiederich.com

SEA CHANTEY OPEN PUB SING • WHEATON, MD

1ST MONDAYS • 8-10 PM

The Ship's Company chanteymen host open mic chantey sings. No cover/minimum; arrive early for a table. Participation encouraged but not mandatory. Requests honored if possible. Mostly a *cappella* but instruments are welcome. Info: Myron Peterson at ructic@yahoo.com or ShipsCompany.org.



JAMS/OPEN MICS/AUDIENCE PARTICIPATION CONTINUED

*Tuesdays***RESTON/HERNDON FOLK CLUB
HERNDON, VA****TUESDAYS • 7:15 PM**

At Amphora Diner Deluxe, 1151 Elden St, 20170. Open mic format. Doors open at 6. Second Tuesday includes 25-minute member showcase. Third Tuesday often features monthly concerts, price varies. Info: **703-435-2402** or **RestonHerdonFolkClub.com**.

DC SHAPE NOTE SING • WASHINGTON, DC**3RD TUESDAYS • 7 - 9 PM**

We sing from both *The Sacred Harp* and *Shenandoah Harmony*. Loaners available and books for sale. Everyone is welcome to bring snacks and friends. Capitol Hill Presbyterian Church, 201 4th St SE, 20003. Enter side door, left of the main steps. Street parking possible; church is 10 minutes from Capitol South and Eastern Market Metro stations, or 20 minutes from Union Station. Info: **540-955-2660** or **DcShapeNotes** Facebook page.

OLD-TIME JAM • BALTIMORE, MD**ALTERNATE TUESDAYS • 7:30 - 10:30 PM**

Ken and Brad Kolodner lead the Baltimore Old-Time Jam at Liam Flynn's, 22 W. North Ave, 21201. Info: **KenAndBrad.com**, **KenKolodner.com** or **BradKolodner.com**.

*Wednesdays***SEA CHANTEY OPEN PUB SING • 3 LOCATIONS****2ND, 3RD, AND 4TH WEDNESDAYS • 8 - 10 PM**

The Ship's Company chanteymen host open mic chantey sings. Participation encouraged but not mandatory. Requests honored if possible. Info: Myron Peterson at **ructic@yahoo.com** or **ShipsCompany.org**.

March

- 11 Wharf Rat**, 801 S Anne St (Fell's Pt), Baltimore 21231
- 18 Galway Bay**, 63 Maryland Ave, Annapolis 21401
- 25 Laughing Man Tavern**, 1306 G St NW, Washington, DC 20005

ARLINGTON JAM! • ARLINGTON, VA**1ST AND 3RD WEDNESDAYS • 7:30 - 10 PM**

Strings (bowed, plucked or hammered), winds, free reeds: all instruments welcome! Intermediate and advanced players interested in old-time, blues, Scandinavian, swing, and other styles. If you sight-read: music provided! 1909 N. Ohio St, 22205. Info: Lilli Vincenz at **703-532-2731** or **Fiddler-Lilli@verizon.net**; or Steve Woodbury at **703-425-5943** or **woodburybauer@verizon.net**.

CAJUN JAM • GREENBELT, MD**4TH WEDNESDAY • 7-9 PM**

Monthly open Cajun jam and dance. New Deal Café, 113 Centerway, 20770. Info: **301-474-5642** or **newdealcafe.com**. Check website to confirm.

*Thursdays***FOLKSONG SING-IN • WHEATON, MD****3RD THURSDAY • 8 - 10 PM**

Join local musician **Brad Howard** every month for this musical gathering. Everyone gets a chance to lead the room in song. Bring your favorite folk tunes, your voice, and even your instruments for a great evening of song and pub-style fellowship. The Limerick Pub, at the corner of Elkin and Price, 11301 Elkin St, 20902. Venue Info: **thelimerickpub.net**

FOLK HOOT! • MT. RANIER, MD**4TH THURSDAY • 7 - 9 PM**

Bruce Hutton hosts a traditional folk music open mic at the Urban Eats Art and Music Café, 3311 Rhode Island Ave, 20712. Info: Bruce Hutton at **301-802-7669**, or **facebook.com/urbaneatismd**.

*Fridays***GLEN ECHO OPEN BAND • GLEN ECHO, MD****2ND FRIDAYS • 8:30 - 11:30 PM**

The fabulous *Glen Echo Open Band* plays for the second-Friday contra dance. All instruments and levels of ability are welcome. Find recordings, tunebook names and page numbers of tunes played by the Open Band at **OpenBandOnline.com**. The site works best using iTunes on a PC or a Mac. Info: **FridayNightDance.org**.

*Saturdays***ARCHIE EDWARDS BLUES JAM • RIVERDALE, MD****SATURDAYS • 1 - 5 PM**

Acoustic instruments, all skill levels and listeners welcome. 4701 Queensbury Rd, 20737, across from the Riverdale MARC train station. Ample parking. Free, but donations welcome. Info/confirmation: **301-396-3054** or **acousticblues.com**.

COMMUNITY SING • SILVER SPRING, MD**SATURDAY, MARCH 21 • 6:30 - 8:45 PM**

Revels and Carpe Diem sponsor a sing on the 21st of each month. All ages welcome. No experience necessary. Bring refreshments and songs to share if you wish. Free. Revels Studio Space, 531 Dale Dr, 20910. Info: Busy Graham at **301-466-0183** or **BusyGraham@gmail.com**.

HAMMERED DULCIMER JAM • McLEAN, VA**MARCH 28 • 1:30 - 4:30 PM**

Hammered dulcimer players of all levels meet monthly to swap tunes and play together; other acoustic instruments welcome. Dolley Madison Library, 1244 Oak Ridge Ave, 22101. Info: **703-356-0770** or **eholsop@gmail.com**, or **google.com/site/nvhdplayers**.



Storytelling

THE GRAPEVINE • TAKOMA PARK, MD**THURSDAY, MARCH 5 • 7:30 - 8:30 PM**

Old-fashioned storytelling with stories of all kinds: truth, myth, and everything else. For adults (occasional language and themes). Hosted by **Jane Dorfman**, with featured tellers **Laura Simms** and **Bunjo Butler**. Takoma Park Community Cntr, 7500 Maple Ave, 20912. Suggested donation \$10 goes to the featured tellers. Info: Tim Livengood at **443-535-3185** or **timtales@verizon.net**.

STORIES FOR THE EQUINOX • WOODSTOCK, MD**SATURDAY, MARCH 21 • 1 - 4 PM**

The Howard County Nature Conservancy hosts an event to honor World Storytelling Day! Storytellers **Walter Jones, Jr.**, **Vernyce Dannels**, **Kristin Pedemonti**, hosted by **Marc Young**. \$10, \$5 under 18, \$25 Family. 10520 Old Frederick Rd, 21163 Info: **hconservancy.org**.



FSGW Newsletter Editorial and Advertising Policy

The Folklore Society of Greater Washington endeavors to print copy it deems relevant to its membership and purpose as stated in its by-laws:

"The main purpose of the Society is to further the understanding, investigation, appreciation, and performance of the traditional folk music and folklore of the American people."

- All copy (except ads) must be submitted by e-mail to publications@fsgw.org in text format in the body of the e-mail by the 10th of the preceding month.
- All listings must be submitted in the format found on our website, fsgw.org. Click on the newsletter tab and scroll down to the paragraph in green lettering.
- The Editor reserves the right to edit or omit copy as necessary. Ad content must be approved by the editor.

Basic Ad charges: 1/4 page ads (3.4" x 4.5" or 7.25" x 2.5"): \$65 for one month, \$120 for two. Commercial business: \$8 for 10 words. Non-commercial and individual: \$4 for 10 words. 25% discount for any single ad placed in 11 consecutive issues (one year) and paid in advance. We will work with you on larger ads. Copy, with check made payable to FSGW, must be received by the newsletter deadline. Mail to **FSGW, PO Box 323, Cabin John, MD 20818**.

Editor: • newsletter@fsgw.org •

Design & Layout: Jennifer Woods GRAPHICS • Silver Spring, MD • 301-587-7174

Workshops, Weekends, Festivals & Special Events

SCOTTISH COUNTRY DANCING CAPITAL WEEKEND COLLEGE PARK, MD

FRIDAY-SUNDAY, MARCH 27- 29, 2015

Teacher: **David Queen** from Lancashire, UK. Music: *Terpsichore* with **Elke Baker, Liz Donaldson, and Ralph Gordon**. At Cherry Hill Convention Park, 9800 Cherry Hill Rd. Info: Sally-Beth Buckner, 301-564-0097, rscds-greaterdc.org/events



FSGW's CHESAPEAKE
DANCE WEEKEND
EDGEWATER, MD
FRIDAY - SUNDAY,
APRIL 10-12, 2015



FSGW celebrates CDW's 33rd anniversary at beautiful Camp Letts. **Adina Gordon** will call dances old and new to wildly fun and adventurous tunes by *The Great Bear Trio*. **Phil Jamison**, up from beautiful North Carolina, will call squares and more to authentic Appalachian music by *The Corn Potato String Band*, and **Matthew Duveneck** and **Anna Gilbert** will instruct dancers in waltz and tango, with music by *Fiddlemuse*. Info: ChesapeakeDanceWeekend.org or fsgw.org.

DISCOVER YOUR TRUE VOICE! STUDY WITH CHARLES WILLIAMS.

"A true patron saint of the voice." - Dr. Bernice Johnson Reagon, founder of *Sweet Honey in the Rock*.

All styles. Specialist in vocal technique and care of the mature voice. Former students include the members of *Sweet Honey in the Rock*, and **Marcy Marxer** of *Cathy Fink & Marcy Marxer*. Convenient Alexandria, VA location.

Info: www.charlesvoice.com or
e-mail Charles.voice@verizon.net.

SPRING BANJO RALLY • BOILING SPRINGS, PA FRIDAY - SUNDAY, MAY 21-23, 2015

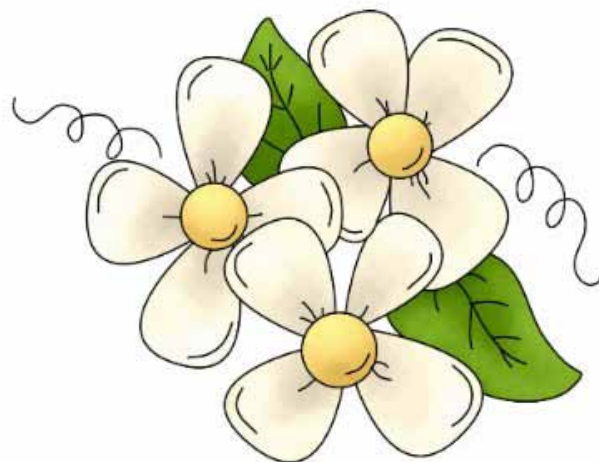
The American Banjo Fraternity sponsors this event, devoted to post-minstrel, nylon-string five-string banjo music as played in the late 19th and early 20th century. Venue is the ground level of the Meadow Lodge, Allenberry Resort, 1559 Boiling Springs Rd. Venue info: **800-430-5468**. Info: banjofraternity.org

AN ENGLISH TRIFLE • HIGH POINT, WV SATURDAY - MONDAY, MAY 23-25, 2015

Want to do something special over Memorial Day weekend, but hate fighting Friday night traffic? This new dance weekend features the wonderful callers and musicians from the Greater Washington English Dance community. Lots of ECD, plus workshops in Dutch Crossing, 16-person quadrille, and more. Tea bag exchange (bring that box you've never opened). At Timber Ridge Camp. Info: Kappy Lanning at kappylan@aol.com, or April Blum at quatriemme@aol.com.

TRADMAD • PLYMOUTH, MA SATURDAY - FRIDAY, AUGUST 29 TO SEPTEMBER 4, 2015

Six days of workshops, dances, concerts, one-shots, camper concerts, jamming, singing, swimming, relaxing, learning, and generally having fun! We have an incredible staff lined up and the setting is beautiful Pinewoods Camp near Cape Cod. Price for FSGW Members is \$725 per adult. Some scholarships will be available. See the TradMaD camp website for details.



HOW TO SUBMIT A LISTING TO THE FSGW NEWSLETTER:

1. Please look at this Newsletter and determine under what category your listing should appear. When submitting copy, put that category in the subject line, followed by the month. So if you want to list a contra dance, your subject line is: Dance Contra [Month]. No punctuation, please. If it's a workshop: Workshop [Month]. If it's a single concert: Concert Individual [Month] And so forth. Putting the category in the Subject Line makes it easier for the editor to retrieve groups of events.

2. Please submit all listings in FSGW format. All information should be submitted in the following sequence:

- Event Title • City, State Abbreviation
- Day of the week, Date • start time - end time
- One or two sentences only. Location (+ zip code for GPS). Ticket prices.
- Info: Contact Name at Phone number or email/website.

NB: The city and state appear in the header; do not repeat then in the body, but in this age of Droids and GPS units, you need to include the 5-digit zip code – it goes right after the street address.

FSGW Newsletter Editorial and Advertising Policy

The Folklore Society of Greater Washington endeavors to print copy it deems relevant to its membership and purpose as stated in its by-laws:

“The main purpose of the Society is to further the understanding, investigation, appreciation, and performance of the traditional folk music and folklore of the American people.”

- All copy (except ads) must be submitted by e-mail to publications@fsgw.org in text format in the body of the e-mail by the 10th of the preceding month.
- All listings must be submitted in the format found on our website, fsgw.org. Click on the newsletter tab and scroll down to the paragraph in green lettering.
- The Editor reserves the right to edit or omit copy as necessary. Ad content must be approved by the editor.

Basic Ad charges: 1/4 page ads (3.4" x 4.5" or 7.25" x 2.5"): \$65 for one month, \$120 for two. Commercial business: \$8 for 10 words. Non-commercial and individual: \$4 for 10 words. 25% discount for any single ad placed in 11 consecutive issues (one year) and paid in advance. We will work with you on larger ads. Copy, with check made payable to FSGW, must be received by the newsletter deadline. Mail to **FSGW, PO Box 323, Cabin John, MD 20818.**

Editor: • newsletter@fsgw.org •

Design & Layout: Jennifer Woods GRAPHICS • Silver Spring, MD • 301-587-7174

FSGW Board 2014–2015

April Blum, President
Charlie Baum, Vice President
Richard Aigen, Treasurer
Kim Gandy, Secretary
Steve Burnett, Dance
Judy Oppenheim, Programs
Janie Meneely, Membership
OPEN, Publications
Liz Milner, Publicity

Members-at-Large
Tim Livengood
Jadzia Sawa
Steve Winick

president@fsgw.org
vicepresident@fsgw.org
treasurer@fsgw.org
secretary@fsgw.org
dance@fsgw.org
program@fsgw.org
membership@fsgw.org
newsletter@fsgw.org
publicity@fsgw.org

301-422-0292
 301-587-6855

571-357-2505
 301-589-4008

board1@fsgw.org
board2@fsgw.org
board3@fsgw.org

Mini-Festival Coordinating Committee

April Blum, Mini-Fest Chair (Logistics/Dance) minifest@fsgw.org
Charlie Baum, Mini-Fest Co-Chair (Programs) cbaum@fsgw.org

301-422-0292
 301-587-6855

Washington Folk Festival Coordinating Committee

Dwain Winters

DwainFest@aol.com

301-657-2789

FSGW BOARD MEETING

WEDNESDAY, MARCH 4 • 8 PM

The monthly FSGW board meetings will be held in Classroom 301 Arcade Bldg. at Glen Echo Park, MD. All FSGW members may attend. If you wish the Board to consider a particular matter, please contact the appropriate board member, or **April Blum** by e-mail, president@fsgw.org, or call afternoons or evenings 301-422-0292 in advance of the meeting.



P.O. Box 323
Cabin John, MD 20818

PRESORTED
FIRST CLASS MAIL
US POSTAGE PAID
ROCKVILLE, MD
PERMIT #4297

www.fsgw.org

Printed on recycled paper.

Address Service Requested

 **FIRST CLASS**

The Folklore Society of Greater Washington is a not-for-profit [Section 501(c)(3) of the IRS code] institution, and we encourage the financial contributions of our members. Contributions in excess of annual dues are welcome and may be tax-deductible. Please mail your gift to FSGW, P.O. Box 323, Cabin John, MD 20818. Subscriptions to the Newsletter are available only outside the Greater Washington Metro area.

FSGW IS DEDICATED TO PRESERVING AND PROMOTING TRADITIONAL FOLK ARTS IN THE WASHINGTON, D.C., METROPOLITAN AREA. MEMBERSHIP IS OPEN TO ALL WHO SUPPORT THESE GOALS UPON PAYMENT OF DUES.

FSGW Membership Form

New Membership Renewal Change of Address

Type	Individual Electronic Newsletter	Individual Paper Newsletter	Family Electronic Newsletter	Family Paper Newsletter
1 Year	<input type="checkbox"/> \$33	<input type="checkbox"/> \$33+ \$6	<input type="checkbox"/> \$45	<input type="checkbox"/> \$45 + \$6
2 Years	<input type="checkbox"/> \$62	<input type="checkbox"/> \$62+ \$12	<input type="checkbox"/> \$85	<input type="checkbox"/> \$85 + \$12
3 Years	<input type="checkbox"/> \$91	<input type="checkbox"/> \$91+ \$18	<input type="checkbox"/> \$125	<input type="checkbox"/> \$125 + \$18
Lifetime	\$550 (no charge for paper)		\$800 (no charge for paper)	
Student	<input type="checkbox"/> \$25	Student membership is electronic newsletter only.		
Paper	<input type="checkbox"/> \$25	Paper newsletter memberships are only for those outside of the Greater Washington area. The subscription includes no member privileges.		

Name 1 _____
(Principal contact for membership, ballots, etc.)

Additional Names _____
(Family memberships only)

Address _____

City _____ State _____ Zip _____

Name 1: H: _____ - _____ - _____ W: _____ - _____ - _____

Cell: _____ - _____ - _____ Other: _____ - _____ - _____

E-mail: _____ @ _____

May we list you in our Membership Directory? FSGW does not provide mailing lists to any other organizations.

Yes No

Yes, but do not list my: _____



Send form and check made payable to FSGW to:
FSGW Membership • FSGW, c/o M. Burnett, 10001 Boreland Ct., Bristow, VA 20136