

FSGW Cosponsored Concert

Germantown, MD



Claude Martin

Claude Martin Memorial Concert & CD Release Saturday, October 7 • 7:30–9:30 PM

The Institute of Musical Traditions, the BlackRock Center for the Arts, the *Martin Family String Band*, and FSGW sponsor a stellar lineup, hosted by **Walt Michael** of Common Ground on the Hill, to pay tribute to **Claude Martin** (1987–2016) and celebrate the release of his posthumous CD. Performers include **Matt Kinman** of *Old Crow Medicine Show* and the *Sons of Freedom*; **Robbie Caruthers & Ralph Gordon**; and the *Martin Family String Band* featuring **Emily Martin** on mandolin, **Lydia Martin** on banjo, **Erica Snow** on guitar, and **Josh Henderson** on bass.



Matt Kinman

Claude was an accomplished Appalachian fiddle player and the rising front man of the multi-generational *Martin Family String Band*, a highlight of many folk festivals. He was scheduled to perform for FSGW in a new five-piece bluegrass band and a duo with Erica

Ralph Gordon

when he passed away suddenly last October while working on his first solo fiddle album. His family has compiled a CD of his unpublished recordings and are working with FSGW to create an award program for rising young traditional artists in his memory. Special thanks to Patuxent Records and Asparagus Media for work on the recordings. BlackRock Center for the Arts, 12901 Town Commons Dr, 20874. \$15 donation suggested. Info: fsgw.org, imtfolk.org, or 301-960-3655.



INSIDE:

FSGW

Board Members/Meetings, Editorial Policy, Newsletter
 Submissions Policy 2

Concerts:

Fri., Oct 6: Archie Fisher + Two Sisters 3
 Sun., Oct 8: *Night Tree* 3
 Fri., Oct. 13: William Pint and Felicia Dale 3
 Sat., Oct 14: Mari Black + Bea Lehman 4
 Sun., Oct 15: *Pierre Chartrand Trio* 4
 Fri., Oct 20: Mike Agranoff 4
 Sun., Oct 29: Harry Bolick & Brian Slattery 5
 Sun., Oct 29: Allan Henderson 5

Dances:

English Country Dances 12
 Family Dance 10
 Glen Echo International Folk Dances 13
 Greenbelt Dance (Cosponsored) 13
 Silver Spring Dance (Cosponsored) 12
 Spooky Sonic 10
 Sunday Night Dances 11

Sings & Swaps

Circle of Life Song Circle 21
 Doo-Wop Sing 20
 Gospel Sing 20
 Grapevine Storytelling (Cosponsored) 23
 Open Sing 20
 Schweinhaut Song Circle 21
 Shape Note Singing 20
 Storyswap 23
 Upcoming Events 24

Listings by Type

Classes 6
 Concerts 6
 Dances 10
 Jams 17
 Open Mics 19
 Participatory Performing Groups 19
 Sings 20
 Special Events 23
 Storytelling 23
 Venues 26

Go to GREAT Concerts for FREE!

Go to great concerts for free! Most FSGW concerts rely on volunteers: See the "Details" page of a concert on the calendar at fsgw.org to sign up to volunteer at that event. You get in for free and you get a pass for free admission to a future FSGW event of your choice (except those listed as "no passes" or "suggested donation")—or to bring a friend!

How to SUBMIT A LISTING TO THE FSGW NEWSLETTER

1. Please look at this Newsletter and determine under what category your listing should appear. When submitting copy by email, put that category in the subject line, followed by the month. E.g., Classes [Month], Concert [Month], Dance [Month], and so forth. Putting the category in the subject line makes it easier for the editor to retrieve groups of events.

2. Please submit all listings in FSGW format. All information should be submitted in the following sequence:

Event Title • City, State Abbreviation
Day of the week, Date • start time - end time
One or two sentences only. Location (+ zip code for GPS). Ticket prices.
Info: Contact Name at Phone number or email/website.

NB: The city and state appear in the header; do not repeat them in the body, but in this age of Droids and GPS units, you need to include the 5-digit zip code—it goes right after the street address. **Submit entries to newsletter@fsgw.org**

FSGW Newsletter Editorial and Advertising Policy

The Folklore Society of Greater Washington endeavors to print copy it deems relevant to its membership and purpose as stated in its by-laws:

"The main purpose of the Society is to further the understanding, investigation, appreciation, and performance of the traditional folk music and folklore of the American people."

- All copy must be submitted by e-mail to newsletter@fsgw.org in text format in the body of the e-mail by the 8th of the preceding month.
- All listings must be submitted in the format set out in the "How to Submit" Box above. The format is also on our website (fsgw.org). Just click on Newsletter and look for a paragraph in green.
- The Editor reserves the right to edit or omit copy as necessary. Ad content must be approved by the Editor.

Basic Ad charges: 1/4 page ads (3.4" x 4.5" or 7.25" x 2.5"): \$65 for one month, \$120 for two. Commercial business: \$8 for 10 words. Noncommercial and individual: \$4 for 10 words. 25% discount for any single ad placed in 11 consecutive issues (one year) and paid in advance. We will work with you on larger ads. Copy, with check made payable to FSGW, must be received by the newsletter deadline. Mail to **FSGW, P.O. Box 323, Cabin John, MD 20818.**

Heather Livingston, Editor • newsletter@fsgw.org
Design & Layout: Jennifer Woods GRAPHICS • Silver Spring, MD

FSGW Board 2017–2018

April Blum, President
Molly Graham Hickman, Vice President
Jerry Stein, Treasurer
Kim Gandy, Secretary
Steve Roth, Dance
Mike Livingston, Programs
Jen Furlong, Membership
Heather Livingston, Publications
Ingrid Gorman, Publicity
Members-at-Large
Steve Kaufman
Tim Livengood
Kenneth Mayer

president@fsgw.org
vicepresident@fsgw.org
treasurer@fsgw.org
secretary@fsgw.org
dance@fsgw.org
program@fsgw.org
membership@fsgw.org
newsletter@fsgw.org
publicity@fsgw.org

301-422-0292

Mini-Fest Coordinating Committee

April Blum, Mini-Fest Chair (Logistics/Dance) minifest@fsgw.org
Charlie Baum, Mini-Fest Co-Chair (Programs) cbaum@fsgw.org

301-422-0292
301-587-2286

Washington Folk Festival Coordinating Committee

Dwain Winters

DwainFest@aol.com

301-657-2789

FSGW BOARD MEETINGS

TUESDAY, OCTOBER 3 • 8 PM

The monthly FSGW Board meeting will be held in Classroom 201 Arcade Bldg. at Glen Echo Park, MD. All FSGW members may attend. If you wish the Board to consider a particular matter, please contact the appropriate Board member, or April Blum by e-mail, president@fsgw.org, or call afternoons or evenings 301-422-0292 in advance of the meeting.

FSGW Concerts

FSGW Concert

See Frequent Venues for many location addresses on page 26.

Takoma, DC



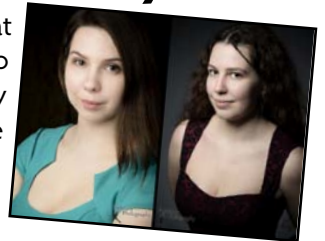
Archie Fisher

the living voice of Scotland

with Two Sisters

Friday, October 6 • 7:30–10 pm

Ian Robb... Janie Meneely... Dave Webber... Some people write songs that are instantly and widely mistaken for traditional folk standards. So it is with **Archie Fisher**, who wrote "The Final Trawl," "Men of Worth," "The Witch of Westmoreland," and more. Honored by Queen Elizabeth II as a Member of the British Empire, Archie Fisher has been the living voice of Scotland since his recording debut 40 years ago. Opening: **Two Sisters, Guen & Liz Spilsbury**, with haunting and beautiful interpretations of traditional ballads such as their namesake. Seekers Church. \$20; members, \$10.



FSGW House Concert

Takoma Park, MD



Night Tree

Sunday, October 8 • 7–9 pm

Night Tree: Lily Honigberg and Chris Overholser (violin), **Zach Mayer** (sax, vocals), **Sunniva Brynnel** (accordion, vocals), **McKinley James** (cello), and **Julian Loida** (percussion; Julian recently performed for FSGW with the *Lomax Folk Project*) comes to Takoma Park on their first tour outside New England, but this Boston band has already opened for *SOLAS* and released a CD produced

by Seamus Egan. As noted on their website: "These conservatory-trained musicians have absorbed genres from across the globe with their millennial curiosity that results in mixture of Irish, Classical, Jazz, Klezmer, Indian, and Afro-Cuban music." About the name, "The band thrives on playing in the dark as to allow themselves the opportunity to focus and listen closely to one another as they get inside each other's sound burrowing into the collection of strings, reeds, and percussion that is *Night Tree*." Suggested donation, \$15. At **Molly Graham Hickman's**. RSVP/directions: hickmang.m94@gmail.com.

FSGW House Concert

Takoma Park, MD



William Pint & Felicia Dale

Friday, October 13 • 7:30–10 pm (doors at 7 pm)

Pint & Dale write of the people who inspired their music, the crews of tall wooden sailing ships: "Those crews were English, Irish, Welsh, German, French, from the West Indies, The United States and other seagoing nations, but the music itself was inspired by the oceans that link all these places together and cover two thirds of our precious planet.

We take all of this as a source of inspiration for our music—giving it our own spin with guitar, hurdy-gurdy, octave mandolin and other exotic sounds. The result is an unusually energetic and exciting approach to folk music." These legends of maritime folk-rock are based in Seattle and making a rare East Coast appearance. At **Molly Graham Hickman's**. \$15 suggested donation. RSVP/directions: hickmang.m94@gmail.com.

FSGW Concerts continued

FSGW Concert

Takoma, DC



Mari Black

World Fiddle Ensemble and Bea Lehman

Saturday, October 14 • 7:30–10 pm



U.S. National Scottish Fiddle Champion in 2013 & 2015....Glenfiddich National Fiddle Champion of Scotland in 2014...yet **Mari Black's** touring repertoire includes Celtic, American, and Canadian fiddle tunes, jazz, tango, klezmer, folk, and original material. With degrees from Yale and Columbia and a reputation for "energetic fiddling, sparkling stage presence, and engaging narratives that tie the whole odyssey together, she takes listeners on a musical journey exploring the dance-driven music of the world." Opening: Traditional ballad singer **Bea Lehman**, teenage rising star of the folk festival circuit. Seekers Church. \$20; members, \$10.

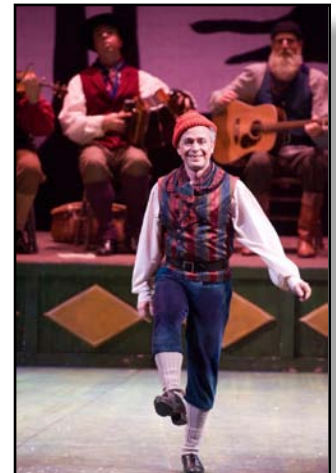
FSGW Cosponsored Concert & Dance

Bethesda, MD

Pierre Chartrand Trio

Sunday, October 15 • 7–10 pm

Internationally acclaimed Quebecois percussive dance master **Pierre Chartrand**, one of the stars of the 2008 Christmas Revels, returns to Washington with his son **Alexis Chartrand** and **Nicolas Babineau** in the **Pierre Chartrand Trio**. For Alexis and Nicolas, this is a CD release tour, introducing their 2017 duo album, *Gigues à deux faces*. Nicolas also released a CD this year with flutist Jean Duval, *Compos trad à saveur locale*. This concert and dance is the second joint presentation of FSGW and the Washington Revels leading up to the French Canadian Christmas Revels this December. \$20; under 18, \$15; members, \$5 off. Cedar Lane Unitarian Universalist Church, 9601 Cedar Lane, 20814. Tickets required. Info: revelsdc.org/2017/oct15-concert-dance/.



FSGW Concert

Alexandria, VA



Mike Agranoff

Friday, October 20 • 7:30–9:30 pm

New Jersey folk mainstay **Mike Agranoff's** website says: "Not so much a singer-songwriter as a singer-songfinder, Mike takes great delight in discovering the little-known hidden gems, polishing them with his own distinctive style, and bringing them to the light of day where they sparkle." On guitar, English concertina, banjo, piano, and a *cappella*, Mike has performed from Michigan to England and from Woods Hole to Winston-Salem, and has been a featured guest at the FSGW Getaway. At the Lyceum. \$15 suggested donation.

FSGW Concerts continued

FSGW Afternoon House Concert

Upper Marlboro, MD

Harry Bolick & Brian Slattery

Mississippi Fiddle Tunes

Sunday, October 29 • 3 pm



Harry Bolick performs on fiddle, octave fiddle, guitar, and sings, sharing many tunes and songs unheard since they were collected in manuscript form in Mississippi in the 1930s, along with engaging stories of the history of their collection and sources. **Brian Slattery**, fiddler with over 20 years' experience and deeply influenced by the old-time music he heard growing up in Ithaca, will be joining Harry for this house concert. Harry and Brian have been performing together for over 15 years and have a duet recording (harrybolick.com/bands/duo-with-brian-slattery). The University Press of Mississippi has just published Harry's book, coauthored by Stephen T. Austin, *Mississippi Fiddle Tunes and Songs from the 1930s*. In support of the book, Document Records has just issued a 3-CD set of the complete 1939 Mississippi fiddle and banjo field recordings. At Mount Lubentia, home of **Andy** and **Sondra Wallace**. Suggested donation, \$15. Reservations/directions: **Andy** or **Sondra** at andy.sondra@verizon.net, or 301-324-7311.

FSGW House Concert

Takoma Park, MD

Allan Henderson

Scottish Highlands fiddle player and storyteller

Sunday, October 29 • 7-9 pm

Allan Henderson is a Scottish Highlands fiddle player and storyteller, and this late October program will have an air of Halloween about it.

From his bio on ceolas.co.uk: "Allan Henderson is from Mallaig and is an accomplished fiddler, piper, pianist and whistle player. He has played with many of the leading Scottish musicians and since graduating from the RSAMD with a degree in Traditional Scottish Music has been playing professionally mainly with the acclaimed *Blazin' Fiddles* with whom he spent 15 years touring all over the world. Allan is now resident in Benbecula and maintains a busy performing schedule as well as teaching." At **Kathie Mack's**. Suggested donation, \$15. RSVP/directions: kpmack2@gmail.com.

From his bio on ceolas.co.uk: "Allan Henderson is from Mallaig and is an accomplished fiddler, piper, pianist and whistle player. He has played with many of the leading Scottish musicians and since graduating from the RSAMD with a degree in Traditional Scottish Music has been playing professionally mainly with the acclaimed *Blazin' Fiddles* with whom he spent 15 years touring all over the world. Allan is now resident in Benbecula and maintains a busy performing schedule as well as teaching." At **Kathie Mack's**. Suggested donation, \$15. RSVP/directions: kpmack2@gmail.com.



Know someone who would like to get more involved in the local folk music scene and gain experience in publicity and communications? Is it you? The FSGW Publicity Committee is recruiting for part-time assistance with creating digital publicity materials on an ongoing basis. Requires knowledge of social media platforms and facile use of technology and software. An eye for graphic design preferred. Must be willing and available to devote three hours a week in this role. Compensation considered; SSL hours available. Training provided. Please submit qualifications and available start date, plus any additional questions to publicity@fsgw.org.

classes

Tuesdays

IRISH SOCIAL DANCE CLASSES • GAITHERSBURG, MD TUESDAYS • 7-9 PM

The Ring of Kerry Irish Dancers teach Irish set and ceili dancing. Classes Tuesday nights through December 12. No partner or dance experience is required, but bring comfortable shoes and a willingness to learn. Ridgeview Middle School, 16600 Raven Rock Dr, 20878. \$70 per person for the semester, includes one year of membership. One free class voucher available online. Info: **Jean Woods** at **301-253-4263** or **ringofkerrydancers.org**.

SCANDINAVIAN DANCE CLASSES • BETHESDA, MD TUESDAYS • 7:30-9:30 PM

Beginning and advanced dancers welcome. Learn hambo, schottis, polskas, springars, and other Swedish and Norwegian couple-turning dances, including requests. Wear smooth-soled shoes (leather soles are best) for turning, not running shoes. \$5. First time free. Info/directions: **Lynn Walker**, **301-834-4020**, **lisa@HamboDC.org**, or **HamboDC.org**.

Wednesdays

SCOTTISH DANCE • ALEXANDRIA, VA WEDNESDAYS • 7:30-9:30 PM

Learn Scottish dance at the Durant Center (2 blocks from King Street Metro), 1605 Cameron St, 22314. \$5. Info: **elanyi@cox.net**.

Thursdays

GWCC ADULT SET & CEILI DANCE CLASS SILVER SPRING, MD THURSDAYS • 7-9:30 PM

The Greater Washington Ceili Club holds weekly adult Irish set & ceili dance classes in a friendly, relaxed environment. Classes Thursday nights through December 14. No experience or partner needed. Wear comfortable clothes and leather or smooth-soled shoes. In addition to weekly instruction, there is a monthly mini-ceili with live music & open to all, generally on the 3rd Thursday each month (small donation requested for musicians). Argyle Park Activities Bldg, 1030 Forest Glen Rd, 20901. \$40/season, register and pay at class, first class free. Info: **301-649-6410**, **info@gwcc-online.org**, or **gwcc-online.org**.

SQUARE DANCE LESSONS • ROCKVILLE, MD THURSDAYS • 7-9 PM

Modern Western Square Dance lessons begin October 5. No partner or experience needed. Rockville Nursing Home Conservatory Hall, 303 Adclare Rd, 20850. Cost for 6 weeks: Adults, \$39; Students, 19.25; Children ages 9-16, free with participating adult. Info/registration: **Eva Murray**, **301-761-4108** or **rockvillesquaredance.com**.

Concerts

See Frequent Venues for many location addresses on page 26.

Sundays

BLUEGRASS BRUNCH • FALLS CHURCH, VA SUNDAYS • 1 PM

Brunch featuring bluegrass or tradjazz. Mostly area musicians, with occasional touringartists. At JV's Restaurant.

JEFF AUSTIN BAND • WASHINGTON, DC SUNDAY, OCT 1 • 8 PM

Mandolinist formerly with *Yonder Mountain String Band* + opens **Dirty Grass Players**. Gypsy Sally's. \$20/23.

RHIANNON GIDDENS, THE FREEDOM HIGHWAY TOUR FREDERICK, MD SUNDAY, OCT 1 • 7:30 PM

Singer, songwriter, banjo player, fiddler of *Carolina Chocolate Drops*; preconcert lecture on Music & African American History included. Weinberg Center for the Arts. \$25.50-35.50.



FSGW HOUSE CONCERT: NIGHT TREE TAKOMA PARK, MD SUNDAY, OCT 8 • 7-9 PM

See page 3.

JAMES HILL & ANNE JANELLE • FALLS CHURCH, VA SUNDAY OCT 8 • 5 PM

Cosponsored by Stone Room Concerts. **James Hill** is a brilliant ukulele player and **Anne Janelle** is a cellist of true beauty. Together, they're an award-winning, utterly world-class singer-songwriter/ukulele-cello duo. The Falls Church Episcopal Church, 115 East Fairfax St, 22046. Info: **David Holiday**, **stoneroomconcerts@gmail.com**, or **FocusMusic.org**.

SWEET HONEY IN THE ROCK • GERMANTOWN, MD SUNDAY, OCT 8 • 7 PM

A cappella women's ensemble rooted in African-American history and culture. This performance will be sign-language interpreted. BlackRock Center for the Arts. \$29-55.

ERIC ANDERSEN SUNDAY, OCT 15 • 3 PM

Called a "song poet," his songs have been covered by Mary Chapin Carpenter, *Fairport Convention*, the *Grateful Dead*, and *Peter Paul & Mary*; two new CDs coming. Jammin' Java. \$20.



FSGW COSPONSORED CONCERT & DANCE:
PIERRE CHARTRAND TRIO • BETHESDA, MD
 SUNDAY, OCT 15 • 7-10 PM

See page 4.

SETH GLIER + CHRIS MONAGHAN • ROCKVILLE, MD
 SUNDAY, OCT 15 • 7:30 PM

Grammy-nominated recording artist **Seth Glier** is a seasoned singer-songwriter, producer, and multi-instrumentalist. Tikvat Israel Congregation, 2200 Baltimore Rd, 20851. Info: **Scott Moore, 301-461-3600** or **FocusMusic.org**.

THE STEEL WHEELS
 SUNDAY, OCT 15 • 7:30 PM

High-test Virginia roots/bluegrass/folk + opener TBA. The Hamilton. \$15-34.50.

THE GIBSON BROTHERS • NORTH BETHESDA, MD
 SUNDAY, OCT 22 • 8 PM

Full-tilt bluegrass led by tight brother harmonies. AMP by Strathmore. \$30-40.

MARTIN SEXTON TRIO
 SUNDAY, OCT 22 • 7:30 PM

Roots-based Americana. The Hamilton. \$27.75-49.75.

THERE'S SOMETHING ABOUT THE WOMEN:
LYNN HOLLYFIELD, CRYSS MATTHEWS, & CARON DALE
 ALEXANDRIA, VA
 SUNDAY, OCT 22 • 7 PM



Lynn Hollyfield is a powerful, passionate singer; a crisp, acoustic guitar player and a singer-songwriter with a warm heart. **Cryss Matthews** blends Americana, folk, jazz, blues, bluegrass and funk into a bold, complex performance steeped in traditional melodies and punctuated by honest, original lyrics. **Caron Dale** is a songwriter/performer, cantorial soloist, workshop leader, and mother, for whom making a positive impact in the world is very important. George Washington Masonic Memorial, 101 Callahan Dr, 22301. Info: **Herb Levy, 703-380-3151**, or **FocusMusic.org**.



FSGW AFTERNOON HOUSE CONCERT:
HARRY BOLICK AND BRIAN SLATTERY
 UPPER MARLBORO, MD
 SUNDAY, OCT 29 3 PM

See page 5.



FSGW HOUSE CONCERT: ALLAN HENDERSON
 TAKOMA PARK, MD
 SUNDAY, OCTOBER 29 • 7-9 PM

See page 5.

REMEMBERING OSCAR BRAND • ROCKVILLE, MD
 SUNDAY, OCT 29 • 7 PM

Folk music stars from across the country gather to celebrate the life of legendary singer-songwriter and long-time radio

Newsletter submissions: See instructions on page 2

Concerts continued

host, Oscar Brand. F. Scott Fitzgerald Theatre, 603 Edmonston Dr, 20851. Sponsored by the World Folk Music Association. Tickets/info: See ad, page 22.

Mondays

WOLF'S BLUES JAM • FALLS CHURCH, VA
 MONDAYS • 8:30 PM

Mostly area musicians, with occasional touring artists. JV's Restaurant.



WILDE ROSES • ROCKVILLE, MD
 MONDAY, OCT 2 • 7:30 PM

Musical collaboration between singers, multi-instrumentalists, composers, dancers, and performers **Anna Tam** and **Emily Alice Ovenden**. Musically and visually inspired by the medieval and renaissance world, they draw their repertoire from illuminated manuscripts, courtly song books, Elizabethan broadside ballads and the folk tradition. Saint Mark Presbyterian Church. \$15 adv/\$20 door; students/children, \$12 adv/\$17 door. Info/tickets: **imtfolk.org** or **301-960-3655**.

MARIA MULDAUR • VIENNA, VA
 MONDAY, OCT 9 • 7:30 PM

A legend: "Midnight on the Oasis"; one-time member of the *Kweskin Jug Band*. Jammin' Java. \$25.

SONGS OF LOVE & RESISTANCE • ROCKVILLE, MD



JOE UEHLEIN & THE U-LINERS
 w/ SAM GLEAVES, CATHY FINK, & MARCY MARXER
 MONDAY, OCT 23 • 7:30 PM

Saint Mark Presbyterian Church. \$20 adv/\$25 door; students/children, \$15 adv/\$20 door. Info/tickets: **imtfolk.org** or **301-960-3655**.

SHAWN COLVIN & HER BAND • ALEXANDRIA, VA
 MONDAY, OCT 30 • 7:30 PM

"A Few Small Repairs" 20th Anniversary Tour with guests **Larry Campbell** & **Teresa Williams**. Birchmere. \$62.50.

Tuesdays

MARK WENNER (OF THE NIGHTHAWKS) &
THE BLUES WARRIORS • FALLS CHURCH, VA
 TUESDAY, OCT 24 • 8:30 PM

At JV's Restaurant.



BEPPE GAMBETTA • HERNDON, VA
 TUESDAY, OCT 10 • 7:15 PM (DOORS, 6 PM)

Beppe Gambetta joins us for his North American tour from his native Genova. Musical fusion of American root music and Ligurian tradition, emigration songs and folk ballads, steel string guitars and vintage harp guitars. Amphora Diner Deluxe. \$14; Members, \$13. Tickets: **Dave, DAHurdSr@cs.com**, or at the door. Info: **703-435-2402, jamesue@aol.com**, or **restonherndonfolkclub.co**.

Concerts continued

BUDDY GUY • ALEXANDRIA, VA
TUESDAY, OCT 10 • 7:30 PM

81-year-old, high-energy Chicago bluesman, with the **Damn Right Blues Band**. Birchmere. \$99.50.

DEAD HORSES • VIENNA, VA
TUESDAY, OCT 10 • 7:30 PM

Milwaukee-based folk band. Jammin' Java. \$12/15.

Wednesdays

MATT TARKA • WASHINGTON, DC

WEDNESDAY, OCT 4 • 7:30 PM (IN UPSTAIRS VINYL LOUNGE)

Local folk rock singer-songwriter. Gypsy Sally's. No cover.

THE SECRET SISTERS • WASHINGTON, DC
WEDNESDAY, OCT 4 • 7:30 PM

Real sisters singing real harmonies. The Hamilton. \$14.75–34.75.

SONJA DISAPPEAR FEAR • WASHINGTON, DC
WEDNESDAY, OCT 4 • 8 PM

Baltimore indie-folk + opener **Phoebe Hunt & the Gatherers**, with world music and jazz affinities. Gypsy Sally's. \$12/15.

PETER ROWAN + TODD SHAEFER • WASHINGTON, DC
WEDNESDAY, OCT 18 • 8 PM

Legendary bluegrass singer-songwriter + lead singer of *Railroad Earth*. Gypsy Sally's. \$25.

BROOKSIE WELLS • WASHINGTON, DC

WEDNESDAY, OCT 25 • 7:30 PM (IN UPSTAIRS VINYL LOUNGE)

After years with pop music, and kids shows, she's back to her folk roots. Gypsy Sally's. No cover.

KRIS DELMHORST & JEFFREY FOUCAULT
WASHINGTON, DC

WEDNESDAY, OCT 25 • 8 PM

Americana singer-songwriting couple celebrate her new CD. Gypsy Sally's. \$18.

Thursdays

CLIFF EBERHARDT + GUEST LOUISE MOSRIE
SYKESVILLE, MD

THURSDAY, OCT 5 • 8 PM

Respected singer & songwriter who has written Shakespearean songs for the Folger Theatre + soulful southern folk. Baldwin's Station. \$20.

EUGENE TYLER BAND • WASHINGTON, DC

THURSDAY, OCT 5 • 7:30 PM (IN UPSTAIRS VINYL LOUNGE)

Singer-songwriter duo **Eugene Gardner & Daniel Tyler** lead. Gypsy Sally's. No cover.

BAILEN • VIENNA, VA
THURSDAY, OCT 5 • 7:30 PM

Sibling harmony, from opera to James Taylor to folk tunes. Wolf Trap, the Barns. \$10 sugg'd.

EILEEN JEWELL • WASHINGTON, DC
THURSDAY, OCT 12 • 7:30 PM

Bluesy Americana artist + opener **Miss Tess**, who grew up attending FSGW events with her parents, Marv & Kathy Reitz. The Hamilton. \$15–40.

GABRIELLE LOUISE • TAKOMA, DC
THURSDAY, OCT 12 • 7:30 PM

Eclectic creative musician who blends disparate styles of music and lyrics. Seekers Church. \$20 adv/\$25 door; students/children, \$15 adv/\$20 door. Info/tickets: imtfolk.org or 301-960-3655.

MOUNTAIN HEART • VIENNA, VA
THURSDAY, OCT 12 • 8 PM

High-energy bluegrass/rock/jam/folk/blues/country band. Wolf Trap, the Barns. \$25–30.

TOM CHAPIN • SYKESVILLE, MD
THURSDAY, OCT 12 • 8 PM

Grammy-winning singer-songwriter for all ages and social activist. Baldwin's Station. \$30.

PACO PEÑA • VIENNA, VA
THURSDAY, OCT 19 • 8 PM

Legendary flamenco guitarist. Wolf Trap, the Barns. \$35–45.

BROOKS WILLIAMS • SYKESVILLE, MD
THURSDAY, OCT 26 • 8 PM

Easy-going singer, songwriter and one of the top acoustic guitarists. Baldwin's Station. \$20.

DJANGOLAYA • WASHINGTON, DC

THURSDAY, OCT 26 • 7:30 PM (IN UPSTAIRS VINYL LOUNGE)

Local band celebrating Django Reinhardt and Gypsy jazz. Gypsy Sally's. No cover.

NORA JANE STRUTHERS & THE PARTY LINE
WASHINGTON, DC

THURSDAY, OCT 26 • 8 PM

High-energy bluegrass/Americana, CD release + eclectic band **Chris Berardo & the Desberardos** open. Gypsy Sally's. \$12/14.

Fridays



FSGW: ARCHIE FISHER WITH TWO SISTERS
TAKOMA DC

FRIDAY, OCT 6 • 7:30–10 PM

See page 3.

Concerts continued

CHOPTEETH AFROFUNK BIG BAND • WASHINGTON, DC
FRIDAY, OCT 6 • 8 PM

West African-American fusion. The Hamilton. \$20–25.

**KITCHEN DWELLERS + HORSESHOES &
HAND GRENADES • WASHINGTON, DC**
FRIDAY, OCT 6 • 8 PM

Bluegrass-rooted music from Montana + Wisconsin. Gypsy Sally's. \$12/15.

**FSGW HOUSE CONCERT:
WILLIAM PINT & FELICIA DALE**
TAKOMA PARK, MD
FRIDAY, OCT 13 • 7:30–10 PM

See page 3.

CORN POTATO STRING BAND • DUNKIRK, MD
FRIDAY, OCT 13 • 8 PM (7 PM POTLUCK)Instrumental virtuosity, vocal harmony, humor, good old-fashioned entertainment. Cedarwood House, 2971 Cedarwood Lane, 20754. Suggested donation \$20. Info: chumleyguitars.com, jeff.chumley@chumleyguitars.com, or 301-520-7209.**DAVID GRISMAN BLUEGRASS EXPERIENCE**
WASHINGTON, DC
FRIDAY, OCT 13 • 8 PMDawg music from the master bluegrass mandolinist + openers *Circus No. 9*, new acoustic music. The Hamilton. \$35–80.**REGGIE HARRIS & KEN WHITELEY IN CONCERT**
TAKOMA, DC
FRIDAY, OCT 13 • 7:30–10 PMTwo stalwarts of the folk music world return to our stage to open the 2017/18 season of Carroll Café. Seekers Church. \$18 in advance, \$20 at door. Tickets/info: carrollcafe.org.**SKIPPERS ALLEY: TRADITIONAL MUSIC FROM IRELAND**
SHEPHERDSTOWN, WV
FRIDAY, OCT 13 • 8 PMModern Irish folk band with an old-school approach, specializes in gritty, high-octane Irish dance tunes on uilleann pipes, whistles, fiddle, bodhrán, bouzouki, flute and harp, with occasional detours into the dark, sombre melodies of the Irish song tradition. Shepherdstown Presbyterian Church, 100 West Washington St, 25443. Advance tickets: \$20 adv/\$25 door; seniors, \$18 adv/\$22 door; members, \$15 adv/\$20 door; children/students, \$10 adv/door. Advance tickets: O'Hurley's General Store or from Brown Paper Tickets. Info: smad.us, upperpotomac@gmail.com, or call 304-263-2531.**TOMMY CASTRO & THE PAINKILLERS CD RELEASE**
WASHINGTON, DC
FRIDAY, OCT 13 • 8 PM

Blues-rock band. Gypsy Sally's. \$25–30.

FSGW: MIKE AGRANOFF • ALEXANDRIA
FRIDAY, OCT 20 • 7:30–9:30 PM

See page 4.

**HOUSE OF HAMILL • TAKOMA, DC**
FRIDAY, OCT 20 • 7:30 PMWhether playing songs from their debut album *Wide Awake* or stomping through a set of original jigs and reels, their chemistry onstage is always engaging and often hilarious. Seekers Church. \$15 adv/\$20 door. Students & Children: \$12 adv/\$17 door. Info/tickets: imfolk.org or 301 960-3655.**JOE CROOKSTON • ANNAPOLIS, MD**
FRIDAY, OCT 20 • 7:30 PMJoe is in the front rank of modern folk singer-songwriters, the author of instant classics like "Fall Down as the Rain" and "Good Luck John" and many moving stories-in-song. He's also a magical onstage presence. Only area appearance this fall. Annapolis Friends Meeting Hall. \$12; students/65+/members of ATDS/FSGW/BFMS, \$10. Info: 333concerts.org, 443-333-9613, or 333coffeehouse@gmail.com.**MARCH TO MAY + CLAIRE HITCHINS**
WASHINGTON, DC

FRIDAY, OCT 27 • 8 PM (IN UPSTAIRS VINYL LOUNGE)

Smooth harmonies + Appalachian roots. Gypsy Sally's. No cover.

SACHAL ENSEMBLE • WASHINGTON, DC
FRIDAY, OCT 27 • 8 PM

Cross-cultural take on cover songs, as well as traditional Pakistani folk songs. Gypsy Sally's. \$45–55.

SUSAN WERNER "AN AMERICAN IN HAVANA"
ALBUM RELEASE • VIENNA, VA
FRIDAY, OCT 27 • 7:30 PM

Master of contemporary folk with a Cuban twist, feat. Mayra Casales, Cuban percussionist. Jammin' Java. \$20–22.

*Saturdays***FSGW COSPONSORED: CLAUDE MARTIN MEMORIAL**
 CONCERT & CD RELEASE • GERMANTOWN, MD
SATURDAY, OCT 7 • 7:30–9:30 PM

See the front page.

BETTER OFF DEAD + THE THE BAND BAND
WASHINGTON, DC
SATURDAY, OCT 7 • 9 PMMusic inspired by *The Grateful Dead* & Jerry Garcia and by *The Band*. Benefit for Planned Parenthood. Gypsy Sally's. \$25/27.**LYNN HOLLYFIELD • WASHINGTON, DC**
SATURDAY, OCT 7 • 8 PM (IN UPSTAIRS VINYL LOUNGE)
Maryland indie-folk-pop singer-songwriter. Gypsy Sally's. No cover.

Concerts continued

**FSGW: MARI BLACK WORLD FIDDLE ENSEMBLE
AND BEA LEHMAN • TAKOMA DC**
SATURDAY, OCT 14 • 7:30-10 PM



See page 4.

POCO FEAT. RUSTY YOUNG • ALEXANDRIA, VA
SATURDAY, OCT 14 • 7:30 PM

West-coast folksy country rock; **Young** has new CD; bilingual folksinger **Tish Hinojosa** opens. Birchmere. \$39.50.

BLUE MOON COWGIRLS • HERNDON, VA
SATURDAY, OCT 21 • 7:30-9:30 PM

Fun group composed of three ladies and one gent who play retro country music (1940s to 1960s) as it was meant to be heard—simple, straight-forward with great vocal harmony. Holy Cross Lutheran Church. \$15; children 12 and younger, free. Info: **Bob Thompson, 703-435-8377** or kd4fue2@verizon.net.

JULIE FOWLIS • GERMANTOWN, MD
SATURDAY, OCT 21 • 8 PM

Award-winning Gaelic singer joined by her band. BlackRock Center for the Arts. \$29-43.

MARTIN SEXTON TRIO • FREDERICK, MD
SATURDAY, OCT 21 • 8 PM

Roots-based Americana. Weinberg Center for the Arts. \$33/38.

ELLIS PAUL + SOPHIE B. HAWKINS • VIENNA, VA
SATURDAY, OCT 28 • 6:30 PM

Two noted songwriters. Jammin' Java. \$25.

TOM PAXTON • ALEXANDRIA, VA
SATURDAY, OCT 28 • 7:30 PM

The legendary singer and songwriter's 80th birthday bash with guests **Tom Rush, Debi Smith, David Buskin, Robin Bullock, Cathy Fink & Marcy Marxer & The Donjuans**. Birchmere. \$45.



dances

See Frequent Venues for many location addresses on page 26.

FSGW FAMILY DANCE • GLEN ECHO, MD
SUNDAY, OCTOBER 8 • 3-5 PM

Dancelady **Janine Smith**, our all-time favorite family dance caller. Glen Echo Park, Spanish Ballroom Annex. Free. Info: **Penelope Weinberger** or **Steve Roth, dance@fsgw.org**.



FSGW SPOOKY SONIC
GLEN ECHO, MD

TUESDAY OCT 31 • 7:30-11 PM



The Spooky Sonic! Halloween night techno contra in the back room at Glen Echo. **Agent-P (Perry Shafran)** calls to a blend of original tracks and mixes by **Jared Kirkpatrick**. **Perry "Agent-P" Shafran** is a local caller extraordinaire who always brings excitement and hot new dances to every contra he calls. **Jared Kirkpatrick** is a rising talent from Chapel Hill, North Carolina, who packs a mix of original, self-produced material and carefully designed mixes. The two will combine forces for this Spooky Sonic. Spooky Sonic means wear something spooky! Costumes are encouraged. Note: Calling for this dance is nongendered. Lesson at 7:30; dancing from 8-11 pm. \$9; members/students, \$7. Please note: This dance is in the **BACK ROOM** of the Glen Echo ballroom —not in the main ballroom. Walk to the left of the main doors to find the entrance.

dances continued

FSGW SUNDAY NIGHT DANCES

AT GLEN ECHO PARK, MD · SPANISH BALLROOM

CONTRAS AND SQUARES · 7:30-10:30 PM

INTRODUCTORY LESSON EVERY SUNDAY · 7-7:30 PM

Join us for an evening of dancing at Glen Echo Park. Every Sunday, FSGW (in cooperation with the National Park Service, Montgomery County, and the Glen Echo Park Partnership for Arts and Culture) presents contras and squares danced to live music by fabulous bands with entertaining callers. Experienced and new dancers welcome; no partner needed. **Welcome/Orientation session every Sunday at 7. Come early for an introduction to the basic moves.** Dances often become more challenging as the evening progresses. Bring water or a sports drink, and dress in layers. Smooth-soled shoes are kindest on your knees and ankles when turning. Info: **Penelope Weinberger** or **Steve Roth**; dance@fsgw.org.

Admission: \$10 for FSGW, BFMS, CDSS, and ATDS Members
\$5 youth (with student ID if over 17) • \$13 for the general public

October

All dances in the Spanish Ballroom this month



1 Amazing old-time young legends **Lydia Martin** (banjo), **Robbie Caruthers** (fiddle), and **Lucas Chohany** (guitar) come up while **Yoyo Zhou** brings incredible California flair.



8 You won't bog down when **Tim Ball** (fiddle), **Paul Oorts** (guitar and more), and **Ralph Gordon** (bass) play lively tunes to which **Alexandra Deis-Lauby** will call some lively dances.

15 Maine meets Maryland when **Dugan Murphy** and his amazing pants come to call to our favorite local family band. **The Organics** bring the funk. With **Rebekah Geller** (fiddle), **Michael Raitzyk** (guitar), **Jakob Raitzyk** (fiddle, foot percussion), and **Judith Geller** (french horn).



22 *Turnip the Beet* is **Kelsey Wells** (fiddle, banjo, mbira, feet, vocals) and **Jeremy Lekich** (guitar, octave mandolin, djembe, vocals). **Andrea Nettleton** calls the tunes.



dances continued

FSGW English Country Dances

Glen Echo, MD • Wednesdays • 8–10:30 pm

Dance on a wood floor in the climate-controlled community room of the Glen Echo Town Hall. Bring clean, non-scuffing shoes for dancing. Cheerful, patient, talented callers are accompanied by top-notch musicians—every Wednesday a different and delightful mix of instruments, including piano, fiddle, flute, oboe, concertina, bassoon, cello, viola, and recorder. Light refreshments served at the break. Experienced and new dancers welcome. No partner required. Info: English@fsgw.org.

Admission: \$10 for FSGW members, \$12 for non-members.

October

4



Beginner Session starts at 7:30. **Anna Rain** calls the dances to the music of **Tina Chancey** (fiddle), **Barbara Heitz** (flute), and **Ralph Gordon** (cello)

18



Kappy Laning and **Tom Spilsbury** call the dances while **Becky Ross** (fiddle), **Bruce Edwards** (bassoon), and **Liz Donaldson** (piano) play

11

Carol Marsh calls the dances while **David Knight** (fiddle), **Tom Wright** (10-string mandolin), and **Liz Donaldson** (piano) make the music



25

Ann Fallon calls the dances to the playing of **Colleen Reed** (flute), **Paul Oorts** (mandolin, accordion), and **Francine Krasowska** (piano)



FSGW-COSPONSORED: SECOND THURSDAY CONTRA/SQUARE DANCE • SILVER SPRING, MD

THURSDAY, OCT 12 • 7:30–10 PM
(FREE INTRO WORKSHOP 7 PM)



Caller **Gabe Popkin** and music by *Sligo Creek Stompers*: **Sarah Foard** (fiddle), **Chris Ousley** (banjo), **Jess Eliot Myhre** (guitar), and **Adrian Erlinger** (bass). Cosponsored by FSGW, Carpe Diem Arts, and Washington Revels, with major support from the Montgomery County Department of Recreation. Great Hall, Silver Spring Civic Building. \$10; FSGW/BFMS/CDSS/Revels members, \$8; students and those without income, \$5; first-timers, free. Info: **Bob Mathis**, talibob@starpower.net; or **Busy Graham**, BusyGraham@CarpeDiemArts.org or 301-466-0183; or carpediemarts.org/dance-with-us, revelsdc.org/, or fsgw.org.



dances continued

FSGW-COSPONSORED: GLEN ECHO INTERNATIONAL FOLK DANCERS · BETHESDA, MD

THURSDAYS · 7:30-10:45 PM

Lesson at 7:30 pm, request dances from 9 to 10:45 pm. Mostly recorded music. No partner or experience necessary. Wear comfortable clothing and soft-soled shoes. Cosponsored by FSGW. Church of the Redeemer, 6201 Dunrobbin Dr, 20816 (near the intersection of Goldsboro and MacArthur). \$5 Info: **Jamie**, 301-466-3018 or dancingplanet@erols.com.

FSGW-COSPONSORED:

THE GREAT AMERICAN SQUARE DANCE REVIVAL · WASHINGTON, DC

No DC Square Dance in October. Please join us Saturday, November 4, for the next installment. Info: dcsquaredance.com.

FSGW-COSPONSORED: GREENBELT CONTRA DANCE GREENBELT, MD



SATURDAY, OCT 7 · 7-9:45 PM (LESSON, 6:30 PM)

Ann Fallon calling to music by *Brambleberry*: **Chelle Fulk** (fiddle), **Bob Garber** (clarinet), and **Diane Sorenson** (piano). NOTE: This month's dance is at the Greenbelt Youth Center: 99 Centerway, 20770 (behind the community center, next to the aquatic center). Cosponsored by FSGW and the City of Greenbelt. No partner or experience necessary. \$10; age 7-18, \$5; 6 and under, free. Info: 301-397-2208. Keep an eye on our Facebook page, "Greenbelt Contra Dance."

CALL-OUT FOR NEWSLETTER SECTION EDITORS!

Want to help the newsletter editor and be the first to know what concerts, dances, sings, or open mics are happening? The editor is seeking volunteer section editors. Section editors would be responsible for compiling and formatting the listings for a specific section and communicating with the editor. Expected time commitment approximately 5 hours one week a month. Contact **Heather Livingston**, newsletter@fsgw.org to find out more.

dances continued

Sundays

FSGW SUNDAY NIGHT DANCES • GLEN ECHO, MD



CONTRAS AND SQUARES • 7:30–10:30 PM

INTRODUCTORY LESSON EVERY SUNDAY • 7–7:30 PM

See page 11.



FSGW FAMILY DANCE • GLEN ECHO, MD

SUNDAY, OCTOBER 8 • 3–5 PM

See page 10.

AFTERNOON WALTZ • GLEN ECHO, MD

SUNDAYS • 3:30 PM • BEGINNER LESSON 2:45 PM

Join us for an afternoon of waltzing. The band will play a lively mix of folk waltzes with other couples' dances, including hambo, swing, tango, and polka. Beginner lesson from 2:45 to 3:30 pm. No partner required. Glen Echo Park, Spanish Ballroom. \$10. Info: waltztimedances.org or 301-634-2222.

October

- 8 Addison Bleufonte** with **Andrea Hoag** (fiddle), **David Julian Gray** (clarinet), **David Lopez** (drums), and **Marc Glickman** (piano).
- 22 Blue Bamboo** with **Barbara Heitz** (flute), **Elke Baker** (fiddle), **John Devine** (guitar), and **Marc Glickman** (piano), and **Ralph Gordon** (bass).

GWCC CEILI • BETHESDA, MD

SUNDAY, OCT 29 • 3–8 PM

The Greater Washington Ceili Club (GWCC) sponsors a monthly Sunday dance (Sept–May) with live music. The workshop starts at 3 pm (this month: Monaghan Set), ceili from 4–8 pm, with potluck dinner during the first break. Music this month is by **Rambling House**: **Tina Eck** (flute), **Joe DeZarn** (fiddle), **Graham DeZarn** (piano), and **Marc Glickman** (piano). Smooth-soled shoes recommended, single dancers welcome. Anastasi Room, Bethesda Chevy Chase Rescue Squad, 5020 Battery Ln, 20814 (plenty of free parking). \$20; members, \$15. Ages 11–20, half price. Ages 10 and under, free. Info: 301-512-4480 or gwcc-online.org.

Mondays

BETHESDA INTERNATIONAL FOLK DANCE

BETHESDA, MD

MONDAYS • 7:30–10 PM

Come join our friendly group and learn dances from all over the world. Beginners 7:30–8 pm, Intermediate/Advanced 8–10 pm (requests from 9:15–10 pm). No partner needed. All levels of experience welcome. Adults over 16. Mostly recorded music; wonderful wood floor. Jane Lawton Community Ctr, 4301 Willow Ln, 20815. \$7. Info: **Phyllis** or **Brandon Diamond**, 301-871-8788 or DiamondDanceCircle.com; or DiamondDanceCircle@comcast.net.



BETHESDA SCOTTISH COUNTRY DANCE

BETHESDA, MD

MONDAYS • 8–10 PM

National Institutes of Health Building T-39 (Dance and Aerobic Center). Call or email in advance for directions. Drop-in fee, \$5. Info: **John MacLeod**, 301-622-5945, blackolav@gmail.com, or rscds-greaterdc.org.



BFMS ENGLISH COUNTRY DANCE

PIKESVILLE, MD

MONDAYS • 8–10:30 PM

English country dancing is lively movement to elegant music in a friendly, informal setting. All dances are taught and walked through. New dancer orientation first Mondays at 7:45 pm. St. Mark's on the Hill Parish Hall. \$11; BFMS/ATDS/FSGW/CDSS members, \$8; \$2 student discount. Info: **Sharon McKinley**, 410-660-9147 or engdance@bfms.org.

October

- 2** Free New Dancer Orientation at 7:45. **Tom Spilsbury** calls to the music of **Jeff Steinberg** (violin), **Steve Epstein** (clarinet), and **Judy Meyers** (piano)
- 9 Ann Fallon** calls the figures to the music of **Carl Friedman** (violin), **Robin Wilson** (winds and concertina), and **Janina O'Brien** (piano and more)
- 16 April Blum** will be the caller; music provided by **Becky Ross** (violin), **Dave Crandall** (winds), and **Francine Krasowska** (piano)
- 23 Carl Friedman** calls to the big band sound of the **Geud Band of Baltimore**
- 30** Halloween dance! Come dressed as your favorite dance, and we'll do our best to call it for you! **Sharon McKinley** calls the figures to the music of **Elke Baker** (violin), **Susan Brandt** (flute), and **Jonathan Jensen** (piano and more)

Tuesdays



FSGW SPOOKY SONIC • GLEN ECHO, MD

TUESDAY OCT 31 • 7:30–11 PM

See page 10.

GREENBELT SCOTTISH COUNTRY DANCE

GREENBELT, MD

TUESDAYS • 8–10 PM

Dance all year 'round at the Greenbelt Community Center. \$8. Info: **Jay Andrews**, 703-719-0596 or andrewj@rcn.com.

ISRAELI DANCING • CHEVY CHASE, MD

TUESDAYS • 7–10:30 PM

Instruction from 7 to 7:45 pm. We focus on building a repertoire of both classic and newer Israeli dances in a friendly, welcoming atmosphere. Recorded music. Light refreshments served. Ohr Kodesh Congregation, 8300 Meadowbrook Ln, 20815. Adults, \$8; Students, \$6. Info: **Mike Fox**, 240-424-0805 or markidmike.com.

dances continued

*Wednesdays***FSGW ENGLISH COUNTRY DANCES • GLEN ECHO, MD**
WEDNESDAYS • 8-10:30 PM

See page 12.

**BFMS CONTRA DANCE • BALTIMORE, MD**
WEDNESDAYS • 8-10:30 PM


Beginners always welcome. New dancer workshops at 7:30 pm on the 2nd and 4th Wednesdays. Nationally known musicians and callers appear regularly. \$13; BFMS/FSGW members, \$9. Lovely Lane Church, 2200 St. Paul St, 21218. Info: bfms.org.

October


- 4** **Caroline Barnes** calls to **Elke Baker** (fiddle) and **Paul Oorts** (guitar, mandolin, and banjo).
- 11** **Sue Gola** calls to **Backstep Cindy: Sandy Hofferth** (fiddle), **Howard Zane** (banjo), **Joe Langley** (guitar), and **Art Abrams** (bass).
- 18** **Brian Hamshar** calls to the **Old Time Jam Band: Ken Kolodner** (fiddle) and **Brad Kolodner** (banjo, bass) lead the band.
- 25** **Perry Shafraan** calls to **Organic Family Band: Michael Raitzyk** (guitar), **Jakob Raitzyk** (fiddle), **Rebekah Gellar** (fiddle), and **Judith Gellar** (French horn).

THE NORDIC DANCERS OF WASHINGTON, DC
SILVER SPRING, MDWEDNESDAYS, OCTOBER THROUGH MAY
(EXCEPT 11/22, 12/20 AND 12/27), 7:30-10 PM

The Nordic Dancers preserve the traditions of community dance groups in Denmark, Finland, Iceland, Norway, and Sweden. Newcomers are welcome. No prior dance experience or a partner is necessary. Music by fiddler **Paul Carlson**, a professional musician and teacher widely recognized for his skill and enthusiasm for Scandinavian music. Highland View Elementary School, 9010 Providence Ave., Silver Spring, MD. No charge the first time; \$4.00 per session thereafter. Info: **Chris Kalke**, 301-864-1596, ckalke@verizon.net, or sites.google.com/site/nordicdancersdc/.

*Thursdays***FSGW-COSPONSORED: GLEN ECHO INTERNATIONAL**
 **FOLK DANCERS • BETHESDA, MD**
THURSDAYS • 7:30-10:45 PM

See page 10.

 **FSGW-COSPONSORED: SECOND THURSDAY**
CONTRA/SQUARE DANCE • SILVER SPRING, MD
THURSDAY, OCT 12 • 7:30-10 PM
(FREE INTRO WORKSHOP 7 PM)

See page 12.

ALEXANDRIA FOLK DANCERS • ALEXANDRIA, VA
THURSDAYS • 8-10 PM

We welcome beginners and advanced dancers; no partner necessary. Friendly and diverse group; fabulous wooden floor; and a mix of easy dances, advanced instruction, and requested dances. Mt. Vernon Unitarian Church, 1909 Windmill Ln, 22307. Donation, \$4. Info: **Patricia**, 703-472-3888 or pdw@patriciadaywilliams.com.

BACK ROOM BLUES • GLEN ECHO, MD
THURSDAYS • 8:15-11:30 PM

Popular weekly blues dance. Sprung wood floor. Beginner lesson from 8:15 to 9 pm. Different DJs and instructors play blues from 9 to 11:30 pm. In the "Back Room" at the Spanish Ballroom, Glen Echo Park. Info: **Donna Barker**, 301-634-2231 or CapitalBlues.org.

CHALLENGING ENGLISH • ADELPHI, MD
3RD THURSDAYS, OCT 19 • 7:30-9:30 PM

A new monthly English contra dance series offers a chance to dance the hard ones. **Andrea Nettleton** calls to music by **Ralph Gordon** (cello), **Judy Meyers** (piano), and **David Knight** (fiddle). This month's dances will include The Bishop's Halloween. Check the Ballroom Blum Facebook page for musicians and dances. At Ballroom Blum. \$5 donation suggested. Info/directions: 301-422-0292 or jerryandapril@aol.com.

CIRCLE DANCE • ARLINGTON, VA
THURSDAYS, OCT 5 • 7:30-9:30 PM

Come and explore dances from all over the world in a spirit of mediation and joy. All dances taught. Recorded music. Unitarian Universalist Church of Arlington. Donation requested. Info: **Ann Ulmschneider**, 703-528-5114 or aulmsch@msn.com.

FRONT ROYAL FAMILY DANCE • FRONT ROYAL, VA
2ND THURSDAYS, OCT 12 • 6-7:30 PM

Line, circle, and square sets. Free and open to all. Samuels Public Library, 330 East Criser Rd, 22630. Info: tommack1861@gmail.com or [facebook.com/SVCWED](https://www.facebook.com/SVCWED).

SQUARE DANCE OPEN HOUSE • ROCKVILLE, MD
THURSDAY, OCT 26 • 7-9 PM

Introduction to modern western square dance. No partner or experience needed. Rockville Nursing Home Conservatory Hall, 303 Adclare Road, 20850. Free. Info: **Eva Murray**, 301-761-4108 or <http://www.rockvillesquaredance.com>.

Fridays**FRIDAY NIGHT DANCERS • GLEN ECHO, MD**

FRIDAYS • 8:30-11:30 PM

(NEW DANCER CLASS EVERY WEEK, 7:30-8:15 PM)

The Friday Night Dancers, a nonprofit, volunteer-based organization, in cooperation with the National Park Service, Montgomery County, and the Glen Echo Park Partnership for Arts and Culture, sponsors weekly contra dances to live music in the historic Glen Echo Spanish Ballroom (unless otherwise

dances continued

specified). Glen Echo Park. \$10 for the lesson and dance. \$5 for age 17 and under. (Age 17 and under free on second Fridays.) Info: FridayNightDance.org or the **Friday Night Dance at Glen Echo Park** Facebook page.

October


- 6 **Caroline Barnes + Sugar Beat**
- 13 **Susan Taylor + Glen Echo Open Band**
- 20 **Janine Smith + Turnip the Beet**
- 27 **Diane Silver + Triple Helix** (Halloween dance & GEPPAC fundraiser, \$11)

GREENBELT FOLK DANCING • GREENBELT, MD FRIDAYS • 8:30 PM

We focus on dance from Eastern Europe and Scandinavia. No partner or experience necessary. Beautiful dance floor. Teaching from 8:30 to 9:15 pm, requests from 9:15 on. Greenbelt Community Center Dance Studio. \$7/students and seniors half-price. Check website for special events. Info: **Larry Weiner**, 301-565-0539 or larry@larryweiner.com; or larryweiner.com/FridayDance.htm.

Saturdays

 **FSGW-COSPONSORED: THE GREAT AMERICAN SQUARE DANCE REVIVAL • WASHINGTON, DC**
See page 13.

 **FSGW-COSPONSORED: GREENBELT CONTRA DANCE • GREENBELT, MD**
SATURDAY, OCT 7 • 7-9:45 PM (LESSON, 6:30 PM)
See page 13.

ATDS CONTRA DANCE • ANNAPOLIS, MD SATURDAY, OCT 21 • 7-10 PM (FREE INTRO LESSON, 6:30 PM)

Caroline Barnes calls to the melodies of **MetroGnomes: Bob Garber** (clarinet), **McGregor Yatsevich** (fiddle, mandolin), and **Mark Vidor** (piano). All ages welcome. All dances taught and walked through. No experience or partner required. Snacks to share at the break welcome. Annapolis Friends Meeting Hall. \$10; discounts for seniors/students/families/ATDS. Info: contradancers.com/atds; **Jan Scopel**, 443-540-0867 or janscope@hotmail.com; or **Charlotte Featherstone**, 203-247-3964 or charlotte.featherstone@verizon.net.

BFMS AUTUMN ASSEMBLY ENGLISH BALL BALTIMORE, MD



SATURDAY, OCTOBER 21

PRACTICE SESSION 2-4:30 PM, BALL 7-11 PM

Join us for English Country Dancing with **Elke Baker** (violin), **Marty Taylor** (winds/concertina), **Ralph Gordon** (cello), and **Dave Wiesler** (piano/guitar). Dances are prompted but not taught at the evening ball. The Church of the Redeemer, 5603 North Charles St, 21210, Tickets: \$15-50. For more info on program and ticket pricing, or to register: bfms.org/autumn-assembly.php.

BFMS CONTRA DANCE • BALTIMORE, MD SECOND SATURDAYS, OCT 14 • 8-11 PM (INTRO WORKSHOP AT 7:30)



Baltimore Folk Music Society presents American square and contra dancing on the second Saturday of each month. This month **Ann Fallon** calls to **Some Assembly**. Introduction to contra dancing from 7:30 to 7:55; dance from 8 to 11 pm (with a short break in the middle). Beginners, singles, couples, and families welcome. No experience or partner necessary. Bring a snack & bring a friend. St. Marks on the Hill. \$13; members & affiliates, \$9. Under 21/full-time students with ID, \$6 (\$4 members). Info: **Sara Glik**, satdance@bfms.org or BFMS hotline, 888-646-BFMS.

BFMS FAMILY DANCE • PIKESVILLE, MD Info: bfms.org/familyDance.php.



BLUEMONT OLD-TIME COUNTRY DANCE HILLSBORO, VA SATURDAY, OCT 21 • 7:30 PM

Greg Frock calls to **Alexander Mitchell** (fiddle) & **Henry Koretzky** (guitar). Hillsboro Old Stone School, 37098 Charlestown Pike, 20132. \$12; seniors/students/Bluemont members, \$8; kids 12 and under, \$5; age 3 and under, free. Info: 540-955-8186 or info@bluemont.org.

ENGLISH COUNTRY DANCE • SILVER SPRING, MD SECOND SATURDAY, OCT 14 • 8-10:45 PM

Dance to music by **Peascods Gathering**; calling by **Bob Farrall**. Beginners and singles welcome. Glen Haven Elementary School, 10900 Inwood Ave, 20902 (parking and entrance in rear). \$5. Info: **Carl Minkus**, 301-493-6281 or cminkus@verizon.net; or **Bob Farrall**, 301-577-5018.

FREDERICK CONTRA DANCE • FREDERICK, MD SATURDAY, OCT 28 • 8-11 PM (INTRO WORKSHOP, 7:15 PM)

Greg Frock will call to fabulous tunes provided by **Graham DeZarn** (fiddle) and **Marc Glickman** (piano) et al. Snacks to share at the break are welcome. Trinity School, 6040 New Design Rd, 21703. General: \$10, Students: \$5. Info: **Boe Walker** at 301-694-6794 or contradancers.com.

GALESVILLE COMMUNITY SQUARE DANCE GALESVILLE, MD

SATURDAY, OCT 14 • 7-10 PM (DOORS OPEN AT 5:45 PM)

Dance squares, circles, longway sets, and waltzes. Appalachian dance tunes by **Leah Weiss** (fiddle) and **Gary Wright** (guitar). **Janine Smith** calls the figures. All ages welcome. 5:45 pm, doors open; 6 pm, optional potluck; 7 pm, family-friendly dancing; 8:30 pm, more challenging dancing. Galesville Memorial Hall, 952 Galesville Rd, 20765 (near Annapolis). \$10; kids ages 5-17, \$5. Info: communitysquare-dance.wordpress.com/ or 301-926-9142.

dances continued

LANCASTER CONTRA DANCE • LANCASTER, PA

SATURDAY, OCT 21 • 7-10 PM

(INTRO WORKSHOP AT 6:15, POTLUCK 5:30 PM)

Donna Hunt calls to *Dr. Twamley's Audio Snakes* with **Mike Rovine** (fiddle), **Wes Steenson** (banjo, guitar), and **Jill Smith** (piano). Special waltz workshop, 5:30 pm (free). St. John's Episcopal Church, 321 W. Chestnut St, 17603. \$9 adults; students, \$6. Age 15 and under free. Info: **Karen, 717-951-4317** or lancastercontra.org.

LEESBURG ASSEMBLY: ENGLISH COUNTRY DANCE

GREAT FALLS, VA

SATURDAY, OCT 21 • 7:30-10:30 PM

The Leesburg Assembly. Join us for our monthly dance. **Liz Donaldson** calls to music by **Catherine Chapman** and **Judy Meyers**. All dances taught and called. Please consider bringing a refreshment to share. St. Francis Episcopal Church Hall, 9220 Georgetown Pike, 22066 (4.7 miles west of the Beltway). \$10; Students, \$5. Info: **Laurel Bybell** (Secretary), lbybell@gmail.com or **703-791-5603**; or theleesburgassembly.org.

NORWEGIAN POTLUCK, CONCERT, & DANCE

KENSINGTON, MD

SATURDAY, OCT 14 • POTLUCK, 6:30 PM; DANCING, 8 PM

Norwegian-style house party. Mesmerizing live music by **Loretta Kelley** on the unique Hardanger fiddle (w/sympathetic strings under the bowed strings—see **HFAA.org**). Addictive dances, some with elements like swing or hambo. Beginners, singles/couples, watchers/listeners all welcome. Bring clean shoes to wear, food to share, and bucks you can spare. Large friendly dog. Host phone just in case: **Sonia, 301-503-7906**. Info/directions: MAND.fanitull.org or **Jenny, pi@xecu.net, 301-371-4312**.

SCANDIA DC DANCE • GREENBELT, MD

THIRD SATURDAYS, OCT 21 • 7-10 PM

Scandia DC sponsors Scandinavian couples dancing on the 3rd Saturday of the month from September through May. This month, live fiddle music will feature **Loretta Kelley**, considered by many to be the best American-born Hardanger fiddler, and the Scandia DC **Spelmanslag**. There may be some recorded music. No partners necessary. Teaching, 7-8 pm: Boda Polska, a favorite Swedish dance, followed by open dancing, 8-10 pm. Greenbelt Community Center Dance Studio (wood floor). \$10. Info: **Linda Brooks** or **Ross Schipper, 202-333-2826** or Linda@ScandiaDC.org; or ScandiaDC.org. Inclement weather, **301-474-0646**.

SHEPHERDSTOWN CONTRA DANCE

SHEPHERDSTOWN, WV

1ST SATURDAYS, OCT 7 • 8 PM

(FREE INTRODUCTORY WORKSHOP AT 7:30)

David Giusti calls contra dances and squares to the music of *Sugarbeat*: **Elke Baker** (fiddle), **Marc Glickman** (piano), and **Susan Brandt** (flute). All levels welcome, no partners needed. Please wear clean, soft-soled shoes to protect the floor. Potluck snacks at the break. War Memorial Building, 102 E. German St, 25443. \$12; \$5 under 12. Info: **John Sauer** at **301-542-3272** or smad.us.



Jams

See *Frequent Venues* for many location addresses on page 26.

*Sundays***ACOUSTIC JAM • ANNAPOLIS, MD**

SUNDAYS • 9:30-11:45 AM

Back room at 49 West Coffeehouse, 49 West St, 21401, Info: ken.i.mayer@gmail.com.

BLUEGRASS JAM • HERNDON, VA

1ST AND 3RD SUNDAYS, OCT 1 & 15 • 1-4 PM

Held outdoors in summer months, in the Country Store in winter months. Frying Pan Park, 2709 W Ox Rd, 20171. Info/directions: **703-437-9101**.

BLUEGRASS OPEN JAM • BRUNSWICK, MD

2ND AND 4TH SUNDAYS, OCT 7 & 21 • 3-6 PM

Beginners welcome. Feel free to join the group and enjoy lively homegrown music the way it was meant to be. Great for listening, too. Beans in the Belfry. Info: **301-834-7178**.

CABOMA JAM • ARLINGTON, VA

2ND AND 4TH SUNDAYS, OCT 7 & 21 • 2-6 PM

Capital Area Bluegrass & Old-Time Music Association holds jams at Lyon Park Community Center, 414 N. Fillmore St (at Pershing Dr), 22201. Slow Jam, 2-3 pm; Regular Jam continues until 6 pm. Info: **Don, 703-522-1696** or caboma.org.

CLASSIC COUNTRY & GOSPEL JAM

SILVER SPRING, MD

2ND SUNDAYS, OCT 7 • 2-5 PM

The Sunday jam welcomes a wide range of musical abilities and acoustic instruments, as well as voice. Playlist, directions, info: **Dorie Hightower, 301-706-7633, SundayJam.org**.

Jams continued

DC BLUEGRASS UNION • WASHINGTON, DC
1ST SUNDAYS, OCT 1 • 11 AM TO 2 PM (BLUEGRASS JAM)
3RD SUNDAYS, OCT 15 • 11 AM TO 2 PM
(BLUEGRASS & COUNTRY JAM)

The Mansion, 2020 O St NW, 20036 (Dupont Circle Metro).
 Info: **Mike Marceau, mikemarceau@juno.com**.

OLD-TIME JAM • RICHMOND, VA
SUNDAYS, 2-5 PM

Bluegrass/Old-Time stringed instruments only. Cary Street
 Café, 2631 West Cary St, 23220. Info/directions: **804-353-7445**.

OLD-TIME OPEN JAM • BRUNSWICK, MD
1ST AND 3RD SUNDAYS, OCT 1 & 15 • 3-5 PM

With *Old-Time Frederick*. Open to all with a fiddle, banjo,
 mandolin, or guitar that wish to join an open group for merry
 music-making. Great listening pleasure. Beans in the Belfry.
 Info: **301-834-7178**.

SCOTTISH JAM & GAELIC SONG CIRCLE
ALEXANDRIA, VA

4TH SUNDAYS, OCT 22 • 1-5 PM

Song circle begins at 1 pm, jam begins at 2 pm. Fiona's Irish
 Pub, 5810 Kingstowne Center, 22315. Info: **dcscottishses-
 sion.blogspot.com**. Info on venue: **info@fionasirishpub.
 com**.

UKULELE JAM • RIVERDALE, MD
1ST SUNDAYS, OCT 1 • 2-4 PM

Playing music from many different genres; it's just plain fun! At
 Archie Edwards Blues Heritage Foundation (Barbershop). Free
 (donations accepted/encouraged). Info: **UkeJamatArchieEd-
 wards@gmail.com**.

Mondays

DC BLUEGRASS UNION JAM • TAKOMA PARK, MD
1ST AND 3RD MONDAYS, OCT 2 & 9 • 7-10 PM

Veterans of Foreign Wars Post 350, 6420 Orchard Ave, 20912
 (corner of Orchard and 4th, just a few blocks from the inter-
 section of New Hampshire and Eastern). Info: VFW Post 350,
301-270-8008 or **Barb Diederich** at **Barb@BarbDied-
 erich.com**.

TOUCHED BY SONG GOSPEL JAM • HERNDON, VA
3RD MONDAYS, OCT 16 • 7:30-9 PM

Acoustic circle jam. Share favorite gospel, hymns, or praise
 songs or just play along. Open to all ages and skill levels. Floris
 United Methodist Church, 13600 Frying Pan Rd, 20171. Info:
debbie@touchedbysongs.com or **dcbu.org**.

WOLF'S BLUES JAM • FALLS CHURCH, VA
EVERY MONDAY • 8:30 PM

At JV's Restaurant. No cover.

Tuesdays

OLD-TIME JAM • BALTIMORE, MD

ALTERNATE TUESDAYS, OCT 3 & 17 • 7-10:30 PM

Ken and Brad Kolodner lead the Baltimore Old-Time Jam at
 The Five and Dime Ale House, 901 West 36th St, 21211. Info:
KenandBrad.com or **Baltimore Old Time Jam Facebook
 page**.

Wednesdays

BLUEGRASS MUSIC ALLIANCE JAM • MARTINSBURG, WV
WEDNESDAYS • 6-9 PM

Musicians of all levels encouraged to come; bluegrass music
 fans are welcome to listen. Martinsburg Moose Lodge, 201
 Woodbury Ave, 25404, **bluegrassmusicalliance.org/local-
 area-jams/**.

Thursdays

OPEN BLUEGRASS JAM • BRUNSWICK, MD
1ST THURSDAYS, OCT 5 • 6:30-9 PM

Hosted by **Bobby Bales** and **Claude Jones**. Bobby is a leg-
 endary lead guitarist in the *Grassy Ridge Band*. All are wel-
 come to join in. Beans in the Belfry. Info: **301-834-7178**.

Saturdays

ARCHIE EDWARDS BLUES HERITAGE FOUNDATION
ACOUSTIC BLUES JAM • RIVERDALE, MD
SATURDAYS • 1-5 PM

Acoustic instruments, all levels; listeners also welcome. At
 Archie Edwards Blues Heritage Foundation (Barbershop).
 Free, but donations welcome. Info: **301-396-3054** or **acous-
 ticblues.com**.



open mics

Mondays

TEAVOLVE CAFE • BALTIMORE, MD

MONDAYS • 7 PM

Open Mic Showcases hosted by **Rob Hinkal**. Teavolve Cafe & Lounge, 1401 Aliceanna St, 21231. Info: **Rob Hinkal**, 410-522-1907 or [facebook.com/teavolvecafe/](https://www.facebook.com/teavolvecafe/).

Tuesdays

GYPSY SALLY'S OPEN MIC • WASHINGTON, DC

MOST TUESDAYS • 8 PM

Upstairs in Vinyl Lounge. Gypsy Sally's. Free. Info: [gypsyalys.com](https://www.gypsyalys.com).

JV'S OPEN MIC • FALLS CHURCH, VA

1ST TUESDAYS, OCT 3 • 8 PM

Hosted by **Crazy After Midnight**. JV's Restaurant. Info: 703-241-9504, jvsrest@aol.com, 703-216-0560, or avnocero@gmail.com.



RESTON-HERNDON FOLK CLUB HERNDON, VA

TUESDAYS • 7:15 PM (DOORS OPEN AT 6 PM)

Open mic format. Second Tuesday includes 25-minute member showcase. Third Tuesday often features monthly concerts, price varies. Amphora Diner Deluxe. Info: 703-435-2402 or [RestonHerndonFolkClub.com](https://www.RestonHerndonFolkClub.com).

Thursdays

ACOUSTIC OPEN MIC • RIVERDALE, MD

1ST THURSDAYS • 7:30-10 PM

If you have a song or three to share with others, original or otherwise, stop in and show your stuff. At Archie Edwards Blues Heritage Foundation (Barbershop). Info: [acousticblues.com/events/events.html](https://www.acousticblues.com/events/events.html).

Participatory Performing Groups

Sundays

MASON DIXON BORDER MORRIS • ADELPHI, MD

SOME SUNDAYS • 12-2 PM

Possibly the oldest and most fictitious morris team in North America. Gender irrelevant, steampunk a plus. Practices usually twice a month at Ballroom Blum. Info/directions: blgraham_99@yahoo.com or [facebook.com/masondixonbordermorris](https://www.facebook.com/masondixonbordermorris).

Tuesdays

CAPITAL ACCORD CHORUS • SILVER SPRING, MD

TUESDAYS • 7:30-10 PM

As October leaves fall and the weather cools down, join the Capital Accord Chorus on the risers. We are an all-women's a cappella group singing in the barbershop style. Join us Tuesday evenings for free and open rehearsals. Northwood HS Chorus Room, 919 University Blvd W, 20901. **Mark your calendars for Sunday, November 12**—we'll be singing at Fenton Street Market in Silver Spring, MD. Check out our website for the time and location. Info: 1-301-392-SONG (7664), admin@capitalaccord.org, or [capitalaccord.org](https://www.capitalaccord.org).

Wednesdays

ROCK CREEK MORRIS WOMEN • BETHESDA, MD

WEDNESDAYS • 7:30-9:45 PM

Learn English morris dancing and become part of a community that dances, sings, and socializes together. Bethesda Elementary School, 7600 Arlington Rd, 20814 (walkable from Bethesda Metro). Info: RCMW@uswet.com, or [uswet.com/RCMW.html](https://www.uswet.com/RCMW.html).

WASHINGTON BALALAIKA SOCIETY ORCHESTRA ARLINGTON, VA

WEDNESDAYS, 7:30-9:30 PM

We are seeking people who play (or want to learn) balalaika, domra, or bayan/accordion or who play some orchestral wind and percussion instruments to perform the music of Russia, Ukraine, and Eastern Europe. Rock Spring Congregational Church, 5010 Little Falls Rd, 22207. Info: [balalaika.org](https://www.balalaika.org) or 703-549-0760.

Thursdays

CARPATHIA FOLK DANCERS • WASHINGTON, DC

THURSDAYS • 6:30-9 PM

Carpathia is Washington's multiethnic Eastern & Central European dance performance ensemble. We are currently looking for 3-4 new men and women who are interested in performing dances from a variety of countries including Ukraine, Poland, Romania, Germany, and Bulgaria. We rehearse in Foggy Bottom and have dancers from 16 years old to their mid-40s (we are open to any interested in fast-paced performance dance of at least 14 years old). Costumes are provided by the ensemble. Info/directions: carpathiadc@gmail.com, [carpathiadc.org](https://www.carpathiadc.org), or [facebook.com/carpathiadc](https://www.facebook.com/carpathiadc).

FOGGY BOTTOM MORRIS MEN • TAKOMA, DC

THURSDAYS • 8-10 PM

Returns in September. Experience the vigorous thrill of the morris and the camaraderie of a morris team. Learn and perform dances from English Cotswold villages, mummers' plays, and occasional long sword dances. We welcome new and slightly used dancers to our practices at Knock On Wood Tap

Performing Groups continued

Studio, 6925 Willow St NW, 20012, and/or at the pub afterward. Info: **Alan Peel**, 301-920-1912, squire@fbmm.org, or fbmm.org.

Fridays

GLEN ECHO OPEN BAND • GLEN ECHO, MD 2ND FRIDAYS, OCT 13 • 8:30–11:30 PM

The fabulous **Glen Echo Open Band** plays for the second-Friday contra dance. All instruments and levels of ability welcome. Find recordings, tune book names, and page numbers of tunes played by the *Open Band* at **OpenBandOnline.com** (site works best using iTunes on a PC or Mac). Info: **FridayNightDance.org**.

Saturdays

WASHINGTON'S SPELMANSLAG • KENSINGTON, MD 2ND & 4TH SATURDAYS, OCT 14 & 28 • 2:30–4:30 PM

Open rehearsals for a small orchestra playing traditional Swedish music. Info/directions: **JuliaBorland3250@gmail.com**.



sings

See Frequent Venues for many location addresses on page 26.

FSGW GOSPEL SING • TAKOMA PARK, MD SUNDAY, OCT 8 • 4–8 PM

Gospel sings are held the second Sunday of every month at various homes. Group singing starts at 4 pm and breaks for a covered dish supper at 6 pm, with more singing after supper until 8 pm. Everyone is welcome! **This month's Gospel Sing** will take place at the home of **Kathie Mack** in **Takoma Park, MD**. Info/directions: kpmack2@gmail.com or **301-270-5367**.

FSGW OPEN SING • GREENBELT, MD FRIDAY, OCT 13 • 8 PM

Topic: *Story Hour*. This is pretty wide open. Most songs tell stories – not just ballads, but love songs, chanteys and other work songs, and even some hymns. Songs about literary characters, books, writers, etc., are particularly encouraged, with extra points granted for songs about libraries/librarians. Accessibility note: We will be singing in the library we built into our house, which is up a flight of about a dozen stairs in our raised ranch. Sorry for the climb, but there is much more seating up there. Please tuck a folding chair into the trunk if you can, in case we have a big crowd. Everyone welcome. Most songs presented from memory, but cheat sheets often appear. Don't worry if you can't think of a song on topic—come anyway! Please bring a snack to share. Home of **Mary Jo and David Shapiro**. We're a little more than a block off Cres-

cent Rd near Old Greenbelt – easily accessible via the Beltway, the Baltimore–Washington Parkway, and University Blvd. Parking in our semicircular driveway for those who'll fit or across the street. RSVP/directions: **301-699-8833** or mjHshapiro@gmail.com.

FSGW SHAPE NOTE SINGING • WASHINGTON, DC 4TH SUNDAYS, OCT 22 • 4–8 PM

Every fourth Sunday, singers explore the rich traditions in *The Sacred Harp* (1991) and *Shenandoah Harmony* (2013), with unaccompanied four-part singing fueled by a potluck supper. Loaner books are available, and all are welcome. New location: Capitol Hill Presbyterian Church, 4th St and Independence Ave SE, 20003. Info: maryann Daly@gmail.com, or **202-495-0489**.

FSGW DOO-WOP SING • POTOMAC, MD SATURDAY, OCT 28 • 5:30 PM

Remember those classic harmonies from the early days of rock—from groups like the *Platters*, the *Clovers* and the *Drifters*? Not to mention the great girl groups such as the *Shirelles*, the *Angels*, the *Crystals*, the *Dixie Cups*, etc. Come join us as we sing those wonderful songs from that era, such as: "Under the Boardwalk," "Goodnight, Sweetheart," "Goin' to the Chapel," "My Boyfriend's Back," "Earth Angel," "Charlie Brown," "Yakety-Yak," and so many more. Lyrics are provided for anyone who wants them. Optional potluck begins about 5:30, followed by a fun evening of singing beginning

about 6:30. Home of **Al Kehs** and **Lynn Blei**. Info/directions: rondavies7@icloud.com or **301-270-9365**.



**FSGW-COSPONSORED: CIRCLE OF LIFE
SONG CIRCLE • ROCKVILLE, MD**
1ST & 3RD TUESDAYS, OCT 3 AND 17 • 1-2:30
PM

Cosponsored by the Bender Jewish Community Center of Greater Washington and FSGW. Sing favorite songs and make new friends! The song circle is about the joy of singing. All are welcome, regardless of experience or level of ability. Words will be provided on song sheets—no need to read music. Come for informal singing or just to listen, but do come. Free; refreshments provided! 6125 Montrose Rd, 20852. Info or to volunteer: **Frieda Enoch**, fenocho@jccgw.org or **Liz Milner**, lizmilner@mindspring.com.



**FSGW-COSPONSORED: SCHWEINHAUT
SONG CIRCLE • SILVER SPRING, MD**
THIRD WEDNESDAYS, OCT 18 • 1-3 PM

This song circle provides a daytime opportunity to enjoy great songs, old or new, humorous or serious, timeless or topical. The song circle is about the joy of singing, not about talent. You don't have to read music, and printed words are provided for songs that have been suggested in advance. Of course, you may lead or request any song, whether or not we have printed words. All are welcome, regardless of age or experience, including instrumental accompanists. Come when you can and leave when you must, but do come to sing or just to listen! Free! Cosponsored by FSGW and Carpe Diem Arts. Margaret Schweinhaut Senior Center, 1000 Forest Glen Rd, 20901. For more info or to suggest songs in advance: **Fred Stollnitz**, fstollnitz@comcast.net.

Sundays



FSGW GOSPEL SING • TAKOMA PARK, MD
SUNDAY, OCT 8 • 4-8 PM

See page 20.

SACRED HARP SINGING • SANDY SPRING, MD
3RD SUNDAYS, OCT 15 • 4-6 PM

Singing followed by a potluck supper. Location is a small schoolhouse behind the Community Building, 17801 Meetinghouse Rd, 20860 (about 10 miles west of Laurel). Info: **Dave Greene**, **301-570-3283** or dgreene@all-systems.com.

sings continued

VIENNA/OAKTON SHAPE NOTE SINGING • OAKTON, VA
3RD SUNDAYS, OCT 15 • 5-7:30 PM

Books: *Shenandoah Harmony* and *Sacred Harp* (1991 Denison edition). Bring a snack to share. Unitarian Universalist Congregation of Fairfax (Classroom 1), 2709 Hunter Mill Rd, 22124. Info: **John**, **540-955-2660** or jdelre@visuallink.com or dcshapenote.squarespace.com.



FSGW SHAPE NOTE SINGING • WASHINGTON, DC
4TH SUNDAYS, OCT 22 • 4-8 PM

See page 20.

Mondays

SACRED HARP SINGING • TAKOMA PARK, MD
MONDAY, OCTOBER 2 • 7-9 PM

Outdoors at the Gazebo on Carroll Avenue across from the bike shop and Roscoe's (7035 Carroll Ave, 20912). Info: **corinne.ducey@gmail.com**.

BALKAN SINGING • TAKOMA PARK, MD
MONDAYS • 8 PM

Informal singing group, *Sedenka*, meets to sing Balkan village songs. Interested novices welcome. Info/directions: **Katya**, **301-270-4175** or Katya@partan.com.

SEA CHANTEY OPEN PUB SING • WHEATON, MD
1ST MONDAYS, OCT 2 • 8-10 PM

The Ship's Company chanteymen host open mic chantey sings. No cover or minimum; Arrive early for a table. Participation encouraged but not mandatory. Requests honored if possible. Mostly a *cappella* but instruments welcome. Limerick Pub, 11301 Elkin St, 20902. Info: **Myron Peterson**, ructic@yahoo.com or ShipsCompany.org.

Tuesdays



**FSGW-COSPONSORED: CIRCLE OF LIFE SONG
CIRCLE • ROCKVILLE, MD**

1ST & 3RD TUESDAYS, OCT 3 AND 17 • 1 TO 2:30 P.M.

See page this page.

DC SHAPE NOTE SINGING • WASHINGTON, DC
3RD TUESDAYS, OCT 17 • 7-9:30 PM

We sing from both *Sacred Harp* and *Shenandoah Harmony*. Loaner book available and books for sale. Everyone welcome to bring snacks and friends. Capitol Hill Presbyterian Church, 201 4th St SE, 20003 (Enter side door, left of the main steps. Street parking possible; 10 minutes from Capitol South and Eastern Market Metros; 20 minutes from Union Station). Info: **Brenda Dunlap**, **202-425-5264** or dcshapenote.squarespace.com.

Wednesdays



FSGW-COSPONSORED: SCHWEINHAUT SONG CIRCLE
SILVER SPRING, MD

THIRD WEDNESDAYS, OCT 18 • 1-3 PM

See this page.

sings continued

SEA CHANTEY OPEN PUB SING
2ND (BALTIMORE), 3RD (ANNAPOLIS), AND 4TH (DC)
WEDNESDAYS • 8–10 PM

The Ship's Company chanteymen host open mic chantey sings. Participation encouraged but not mandatory. Requests honored if possible. Info: **Myron Peterson, ructic@yahoo.com** or **ShipsCompay.org**.

October

- 11 Wharf Rat**, 801 S Anne St (Fell's Pt), Baltimore, MD 21231
18 Galway Bay, 63 Maryland Ave, Annapolis, MD 21401
25 Mackey's Public House (formerly Laughing Man), 1306 G St NW, Washington, DC 20005

Thursdays

SEA CHANTEY OPEN PUB SING • TYSONS CORNER, VA
2ND THURSDAYS, OCT 12 • 8–10 PM

The Ship's Company chanteymen host open mic chantey sings. No cover or minimum; arrive early for a table. Participation encouraged but not mandatory. Requests honored if possible. Mostly a *cappella* but instruments welcome. Paddy Barry's Irish Pub and Restaurant, 8150 Leesburg Pike, 22182 (Rte 7 near 123; half-mile walk from Tysons Corner or Greensboro Metros). Info: **Myron Peterson, ructic@yahoo.com** or **ShipsCompany.org**.

Remembering Oscar Brand

Sunday, October 29, 2017 - 7:00 PM
 F. Scott Fitzgerald Theatre
 603 Edmonston Drive Rockville, MD 20851

Folk music stars from across the country will gather at the F. Scott Fitzgerald Theatre to celebrate the life of legendary singer-songwriter and long time radio host, Oscar Brand. For more than 70 years, until his death on September 30, 2016, Oscar Brand hosted Folksong Festival on WNYC in New York City. His show featured interviews with and songs by many of the greats of folk music. Don't miss this tribute to one of folk music's most influential troubadours.

Performers: The Limelitters, Christine Lavin, Carolyn Hester, David Buskin, Josh White, Jr., Roy Zimmerman, Dave Rowe, Jonathan Segal, The Accomplices (Jordan Brand, Jon Pickow and John Foley), James Brandon and surprise guests.

Tickets: \$53/\$84
 Reception with performers after concert: \$38
 Tickets- online:
<http://www.rockvillemd.gov/theatre>
 Tickets - by phone: 240-314-8690
 More Information:
<http://wfma.net/con17.htm>



FOLKSONG SING-IN (OPEN FOLK SING)
WHEATON, MD

3RD THURSDAYS, OCT 19 • 8–10 PM

Join local musician **John Durant, Jr.**, every month for this musical gathering. Everyone gets a change to lead the room in song. Bring your favorite folk tunes, your voice, and even your instruments for a great evening of song and pub-style fellowship. The Limerick Pub, 11301 Elkin St, 20902 (corner of Elkin & Price). Venue info: **thelimerickpub.net**.

Fridays

FSGW OPEN SING • GREENBELT, MD
FRIDAY, OCT 13 • 8 PM

See page 19.

Saturdays

SHAPE NOTE SINGING • BOYCE, VA
1ST SATURDAYS, OCT 7 • 4–8 PM

All are welcome to sing from *Shenandoah Harmony* and *Sacred Harp*. Potluck dinner at 6 pm. Locations vary. Info/address: **Kelly** or **John, jdelre@visuallink.com** or **540-336-8112**; Northern Shenandoah Valley Facebook page; or **dcshapenote.squarespace.com/nsv/**.

5TH ANNUAL BALTIMORE/WASHINGTON
SHENANDOAH HARMONY ALL-DAY SINGING!
ARLINGTON VA

SATURDAY, OCT 7 • 10 AM TO 3:30 PM

Join singing from the *Shenandoah Harmony* shape-note tune-book. Potluck lunch at mid-day; please bring a dish to share; kitchen facilities available. Women's Club of Arlington, 700 S. Buchanan St, 22204 (building not ADA-compliant). Free. Info: **Matt Roberts, saotomesan@yahoo.com**, or **dcshapenote.squarespace.com/big-singings/**.

WASHINGTON REVELS-CARPE DIEM COMMUNITY
SING • SILVER SPRING, MD
SATURDAY, OCT 21 • 6:30–8:30 PM

As the leaves turn, we'll sing about the seasons of life, time & change, and celebrate Italian Heritage Month. Everyone is welcome to bring a song to lead and refreshments to share. Presented by Washington Revels and Carpe Diem Arts. Washington Revels Studio Space. Free (donations welcome). Info: **Jo Rasi, jrasi@revelsdc.org** or **301-587-3835**; **revelsdc.org/shows-events/community-sings/** and **carpediemarts.org/sing-with-us**.



FSGW DOO-WOP SING • POTOMAC, MD
SATURDAY, OCT 28 • 5:30 PM

See page 19.



Special Events

BALTIMORE FOLK MUSIC SOCIETY DANCE AND MUSIC FEST AT PATTERSON PARK • BALTIMORE, MD SUNDAY, OCT 1 • 12–6 PM

The Baltimore Folk Music Society invites you to join in an afternoon of great fun at this free event. On the main stage, six terrific bands: **Nutalusa** (cajun and zydeco music), **Tanzania Ceili Band** (Irish music), **Will Play for Fish** (old-time music), **Catonsville Steel Drum Band**, **El Conjunto Bruja** (Latino music), and the **Baltimore Barrage Band** orchestra (a wonderful eclectic mix of music including New Orleans, klezmer, Balkan and Eastern European, and marching band music). **Charm City Rapper Sword** also performing. Bring a picnic and blanket or buy tasty treats from the food vendors. Crafts for sale & other fun activities. No rain date. In the event of severe weather, check the BFMS website Sunday morning. The historic Pagoda will be open for tours from 12–6 pm. Pagoda Hill, Patterson Park. Walk into the park at E. Lombard St and S. Patterson Park Ave. Free. Info: bfms.org, friends@pattersonpark.com, 410-276-3676, pattersonpark.com, specialevents@bfms.org, or 410-321-8419.

AMERICAN BANJO FRATERNITY • NEWARK, NY THURSDAY, OCT 12 TO SATURDAY, OCT 14

Banjo players and listeners are invited. Free concert at 7:30 pm on October 14. Newark Garden Hotel, 125 N. Main St, 14513 (315-331-9500). We welcome guests without charge except for food and lodging. Info: **Joel Hooks**, joelhooks@me.com. Please check our website for updates: banjofraternity.org.

VOTE BY VOTE: THE DEMOCRACY SONG

New pro-voting lyrics to "The Garden Song". Free to record or perform. Email edweisbart@gmail.com for chords and lyrics. Video: <https://youtu.be/M3zVXf-bEi4>.



Storytelling

See Frequent Venues for many location addresses on page 26.



FSGW STORYSWAP • COLUMBIA, MD SATURDAY, OCT 21 • 7:30 PM

One Saturday night per month, tending toward the second one, local storytellers congregate at someone's home and swap stories, practicing new material or pulling out old favorites. This month, storytellers and listeners are invited to the home of **Marc Young** for an evening of shared stories and potluck snacks. RSVPs/directions: **Marc**, bshert951@hotmail.com.



FSGW COSPONSORED: THE GRAPEVINE TAKOMA, DC

SECOND WEDNESDAYS, OCT 11 • 7:30–9:30 PM

Ordinary magic: Encounters with the strange. The Grapevine is home for first-rate storytelling and storytellers of all styles. Hosted by **Tim Liven-good**, with featured tellers **Robin Bady** and **Angela Lloyd**. **Robin** performs across the United States, China, and Europe, anywhere people gather to listen. Her repertoire includes folklore and fairy tales, true ghost tales and true personal stories,

Jewish tales and world tales and political satire. **Angela** was raised in South America listening to Carl Orff's Music for Children, Gian Carlo Menotti, Miriam Makeba, and Pete Seeger. She crisscrosses the country as a teaching/touring artist and is the storyteller in residence at Children's Community School, Van Nuys, California. The program opens with up to three open-mic tellers with a 5-minute limit (each). Busboys and Poets, 235 Carroll St NW, 20012. Food and drink available. Suggested donation of \$15 per person goes to the featured tellers—feel free to donate more! "Like" The Grapevine on Facebook at [GrapevineStorytelling](https://www.facebook.com/GrapevineStorytelling). Details: 301-587-3558, grapevinetakoma@gmail.com.

REVELS WORLD STORY TIME • SILVER SPRING, MD TUESDAYS, OCT 10 & 24 • 10:30–11:30 AM

Bring your kids and join us as we explore the magical, diverse world of children's literature. We'll journey through books old and new, from different countries and unique cultures; all delightful for kids of any age (but aimed at the 3–7-year-old set). Washington Revels Studio Space. Free (donations welcome). Info: **Jo Rasi**, 301-587-3835, jrasi@revelsdc.org, or revelsdc.org/revels-kids/revels-world-story-time/.



Upcoming events are subject to change; please check fsgw.org for updates, further details, additional event listings, and links to performers' audio samples and websites.

November

SATURDAY, NOVEMBER 4 • BRIAN DOLPHIN & EARTH PERSON

FRIDAY, NOVEMBER 10 • BEN HUNTER & JOE SEAMONS w/ DAVID EVANS

SATURDAY, NOVEMBER 11 • DAVID EVANS (MORNING GUITAR WORKSHOP)

SATURDAY, NOVEMBER 11 • DAVID EVANS (AFTERNOON LECTURE/DEMO ON "EARLY MISSISSIPPI BLUES")

SATURDAY, NOVEMBER 11 • CASSIE & MAGGIE MACDONALD w/ SHANNON DUNNE

FRIDAY, NOVEMBER 17 • DJOUKIL

SATURDAY, NOVEMBER 18 • ALEXANDRIA CIDER FESTIVAL WITH THE *CIGAR BOX STRING BAND*,
MASSIVE DONUT AND *SIBLING RIVALRY*

SATURDAY, NOVEMBER 18 • ED TRICKETT w/ SARAH WHITE

December

SATURDAY, DECEMBER 2 • *MERIDIAN* HOLIDAY CONCERT

2018

JANUARY

FRIDAY, JANUARY 19 • *WINDBORNE*

February

SATURDAY, FEBRUARY 3 • FSGW ANNUAL MIDWINTER FESTIVAL (MINI-FEST)

SUNDAY, FEBRUARY 4 • BILL DESTLER AND SARAH MURDOCH

SATURDAY, FEBRUARY 24 • ANDREW FINN MAGILL & PETER MAWANGA

March

SATURDAY, MARCH 24 • *OLD HOWARD TROUPE*

FRIDAY, MARCH 30 • *TURNSPIT DOGS*

APRIL

APRIL 27-29 • 36TH ANNUAL CHESAPEAKE DANCE WEEKEND

APRIL • 29TH POTOMAC RIVER SACRED HARP CONVENTION

May

SATURDAY, MAY 12 • 32ND ANNUAL WASHINGTON SPRING BALL

Youth Trad Song Weekend, January 5-7, 2018

Heads Up: **Monday, October 2** is the deadline to register for Youth Trad Song Weekend 2018 (January 5-7) in Becket, MA. The sixth annual YTS retreat, cosponsored by FSGW, is open to all ages, but 80% of the spaces are reserved for people under 50; the point is to create an intergenerational community of social singing leaders. You can register after the deadline, but will be added to the waiting list after everyone who signed up by October 2. For more information, visit youthtradsong.org.

1/3 OFF ADVANCE TICKETS FOR CIDER WEEK FOR FSGW MEMBERS • SATURDAY, NOVEMBER 18

Cider Week Virginia festivities in Alexandria, VA. A hard cider tasting (2-6 pm at The Lyceum) with more than a dozen Virginia cideries is accompanied by food trucks, tasting lectures, fall activities, and live music by the

Cigar Box String Band, Massive Donut, and Sibling Rivalry sponsored by FSGW. For the member discount (\$15 off the regular price

of \$45), call The Lyceum in advance

at **703-746-4994**. Regular tickets

can be purchased at ciderweekva.com or shop.alexandriava.gov.

Note: You can enjoy this afternoon

festival and still have time to get to

the Ed Trickett concert at Seekers

Church at 7:30 pm.



FAQ of the Month

Q: I'm hosting a house concert. Can I get it listed in the newsletter and on fsgw.org?

A: If you ask FSGW to cosponsor your house concert and agree to certain legal and financial standards, then we will usually be happy to lend our name and promotional resources to your house concert—unless, of course, the date conflicts with an FSGW event already on our busy schedule. A cosponsored house concert will be listed in the newsletter prominently; on our website and in our weekly e-blast; and announced at other FSGW events. House concerts that are not cosponsored by FSGW but are of interest to our members get listed in the newsletter as space permits, but not in our online media. House concerts cosponsored by FSGW never have a fixed admission price, only a suggested donation, and the address cannot be published in any advertising or social media, only provided to individuals who RSVP. All donations collected must go to the performer unless the host wishes to be reimbursed for expenses, and the total amount collected must be reported to FSGW's treasurer and accountant. If needed, we can provide travel subsidies and help ensure that the performers are compensated fairly.

—Mike Livingston, program@fsgw.org

frequent venues

Allyworld, 7014 Westmoreland Ave, Takoma Park, MD 20912 (Takoma Radio entrance)

AMP by Strathmore, 11810 Grand Park Ave, North Bethesda, MD 20852, ampbystrathmore.com (Strathmore members receive admission discounts)

Amphora Diner Deluxe, 1151 Elden St, Herndon, VA, 20170.

Annapolis Friends Meeting Hall, 351 Dubois Rd, Annapolis, MD 21401

Archie Edwards Blues Heritage Foundation, 4701 Queensbury Rd, 20737 (across from Riverdale MARC train station; ample parking). Info: acousticblues.com.

Baldwin's Station, 7618 Main St, Sykesville, MD 21784

Ballroom Blum, Adelphi, MD. Info/directions: **301-422-0292** or jerryandapril@aol.com

Beans in the Belfry, 120 W Potomac St, Brunswick, MD 21716.

Birchmere Concert Hall, 3701 Mt. Vernon Ave, Alexandria, VA 22304 (all shows 7:30 pm), birchmere.com, **703-549-7500**

BlackRock Center for the Arts, 12901 Town Commons Dr, Germantown, MD 20874 (Ride-On bus routes 97 & 100)

Glen Echo Park, 7300 Macarthur Blvd, Glen Echo, MD 20812

Glen Echo Town Hall, 6106 Harvard St, Glen Echo, MD 20812

Greenbelt Community Center, 15 Crescent Rd, Greenbelt, MD 20770

Gypsy Sally's, 3401 K St, NW, Washington, DC 20007, gypsysallys.com

LISA NULL is accepting a few new voice students: basic vocal techniques, coaching in traditional styles. Downtown Silver Spring. FREE mutual interview! enul@starpower.net or **301-587-2286**

HAMMERED AND MOUNTAIN DULCIMER RENTALS, rentadulcimer.com, **301-609-2140**. 10% discount to FSGW members.

IRISH CONCERT HARP FOR SALE. Sixty-eight inches tall, forty strings all levered, curved spruce staves sound board, Irish round back. Price – \$5,500.00. \$550 discount to FSGW members, **301-609-2140**.

The Hamilton, 600 14th St NW (at F), Washington, DC 20005, thehamiltondc.com

Holy Cross Lutheran Church, 1090 Sterling Rd, Herndon, VA 20170, holycrosslutheranchurch.net

Jammin' Java, 227 Maple Ave E, Vienna, VA 22180, jamminjava.com

JV's Restaurant, 6666 Arlington Blvd, Falls Church, VA 22042, jvsrestaurant.com. Marking 70 years, JVs has live music every day, usually blues or roots rock; occasional cover charge, always a bucket; most shows 8 or 8:30 pm; room to dance. Mostly area musicians, with occasional touring artists

Lyceum, 201 S. Washington St. Alexandria, VA 22314. Info: **703-838-4994**.

Mad City Coffee, 10801 Hickory Ridge Rd, Columbia, MD 21044, 410-964-8671, madcitycoffee.com.

New Deal Café, 113 Centerway, Roosevelt Center, Greenbelt, MD 20770, newdealcafe.com.

Potter's Violins, 7111 Eastern Ave, Takoma Park, MD 20912 (old Blair Mansion) pottersviolins.com.

Saint Mark Presbyterian Church, 10701 Old Georgetown Rd, Rockville, MD 20852.

Saint Stephen's Episcopal Church, 1525 Newton St. NW, Washington DC (near the Columbia Heights metro)

Seekers Church, 276 Carroll St NW, Washington, DC 20012 (Takoma Metro)

Silver Spring Civic Building, One Veterans Plaza, Silver Spring, MD 20910 (free parking in lot across the street at 801 Ellsworth Dr)

St. Mark's on the Hill, 1620 Reisterstown Rd, Baltimore, MD 21208

Takoma Park Middle School, 7611 Piney Branch Rd, Silver Spring, MD 20910

Unitarian Universalist Church of Arlington, 4444 Arlington Blvd, Arlington, VA 22204

Warner Theatre, 513 18th St NW, Washington, DC, 20004, warnertheatredc.com

Washington Revels studio space, 531 Dale Dr, Silver Spring, MD 20910

Weinberg Center for the Arts, 20 W. Patrick St., Frederick, MD 21701; weinbergcenter.org

Wolf Trap, The Barns, 1635 Trap Rd, Vienna, VA, 22182, wolftrap.org

SUPPORT FOLK MUSIC ON YOUR LOCAL COMMUNITY RADIO STATIONS!

Saturday nights listen to **Mary Cliff's Traditions** (Washington's longest-running radio show devoted to folk music) from 9 pm to midnight on WERA-FM Arlington (96.7 FM or streaming at wera.fm).



And tune in to WQWD-LP Takoma Park (94.3 FM or streaming at takomaradio.org); many shows of interest to blues, folk, reggae, and other traditional music enthusiasts. Full schedule/show descriptions at takomaradio.org.





P.O. Box 323
Cabin John, MD 20818

PRESORTED
FIRST CLASS MAIL
US POSTAGE PAID
SUBURBAN, MD
PERMIT #4297

www.fsgw.org

Printed on recycled paper.

Address Service Requested

FIRST CLASS

The Folklore Society of Greater Washington is a not-for-profit [Section 501(c)(3) of the IRS code] institution, and we encourage the financial contributions of our members. Contributions in excess of annual dues are welcome and may be tax-deductible. Please mail your gift to FSGW, P.O. Box 323, Cabin John, MD 20818. Subscriptions to the Newsletter are available only outside the Greater Washington Metro area.

FSGW IS DEDICATED TO PRESERVING AND PROMOTING TRADITIONAL FOLK ARTS IN THE WASHINGTON, D.C., METROPOLITAN AREA. MEMBERSHIP IS OPEN TO ALL WHO SUPPORT THESE GOALS UPON PAYMENT OF DUES.

FSGW Membership Form

New Membership Renewal Change of Address

Type	Individual Electronic Newsletter	Individual Paper Newsletter	Family Electronic Newsletter	Family Paper Newsletter
1 Year	<input type="checkbox"/> \$33	<input type="checkbox"/> \$33+ \$6	<input type="checkbox"/> \$45	<input type="checkbox"/> \$45 + \$6
2 Years	<input type="checkbox"/> \$62	<input type="checkbox"/> \$62+ \$12	<input type="checkbox"/> \$85	<input type="checkbox"/> \$85 + \$12
3 Years	<input type="checkbox"/> \$91	<input type="checkbox"/> \$91+ \$18	<input type="checkbox"/> \$125	<input type="checkbox"/> \$125 + \$18
Lifetime	\$550 (no charge for paper)		\$800 (no charge for paper)	
Student	<input type="checkbox"/> \$25	Student membership is electronic newsletter only.		
Paper	<input type="checkbox"/> \$25	Paper newsletter memberships are only for those outside of the Greater Washington area. The subscription includes no member privileges.		

Name1 _____
(Principal contact for membership, ballots, etc.)

Additional Names _____
(Family memberships only)

Address _____

City _____ State _____ Zip _____

Name 1: H: _____ - _____ - _____ W: _____ - _____ - _____

Cell: _____ - _____ - _____ Other: _____ - _____ - _____

E-mail: _____ @ _____

May we list you in our Membership Directory? FSGW does not provide mailing lists to any other organizations.

Yes No

Yes, but do not list my: _____



Send form and check made payable to FSGW to:
FSGW Membership • FSGW, c/o M. Burnett, 10001 Boreland Ct., Bristow, VA 20136